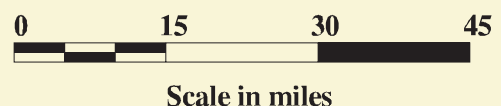
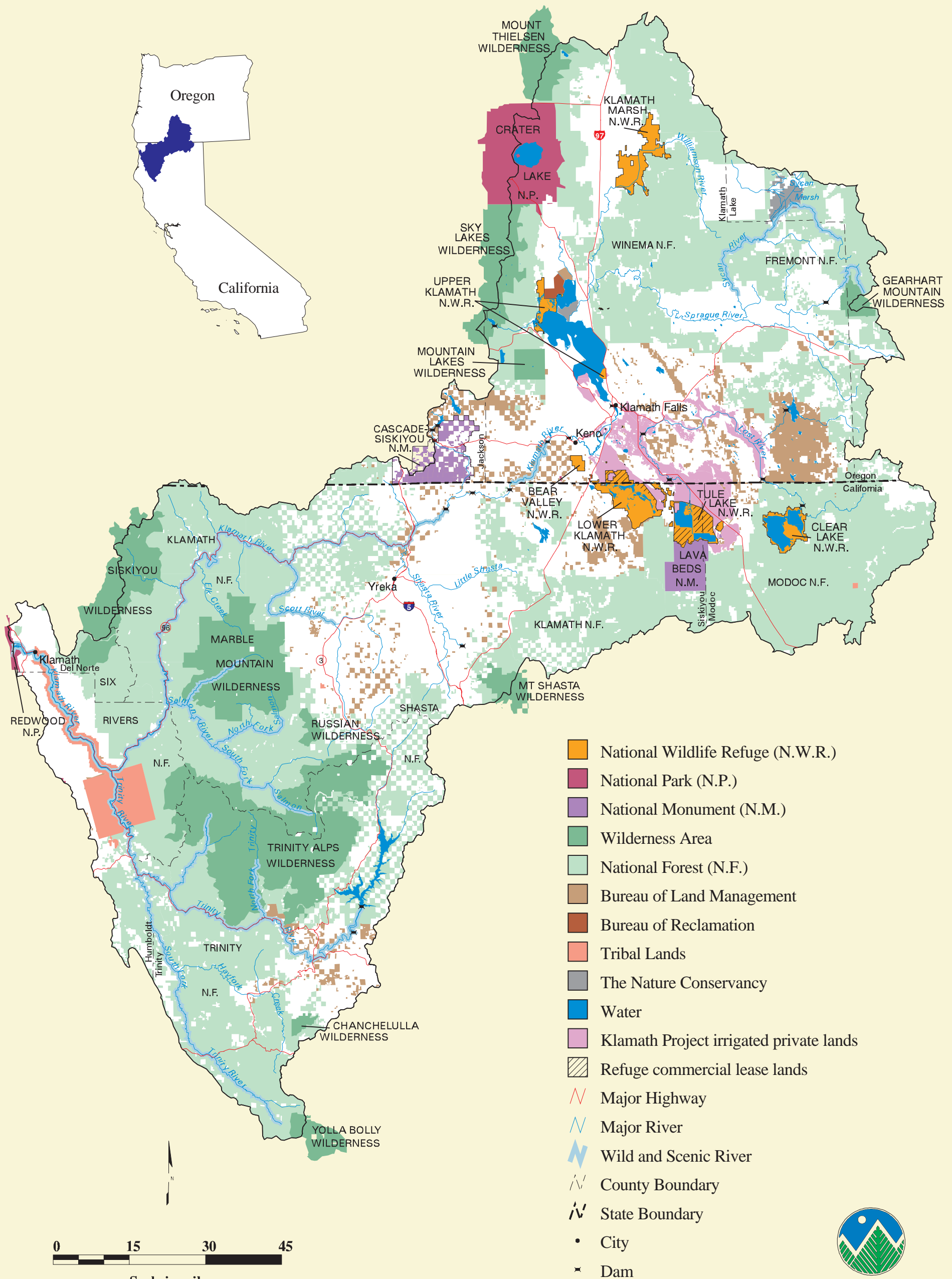


Klamath River Basin



- National Wildlife Refuge (N.W.R.)
- National Park (N.P.)
- National Monument (N.M.)
- Wilderness Area
- National Forest (N.F.)
- Bureau of Land Management
- Bureau of Reclamation
- Tribal Lands
- The Nature Conservancy
- Water
- Klamath Project irrigated private lands
- Refuge commercial lease lands
- Major Highway
- Major River
- Wild and Scenic River
- County Boundary
- State Boundary
- City
- Dam

