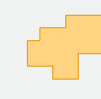






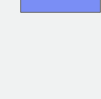
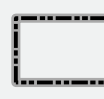




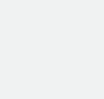
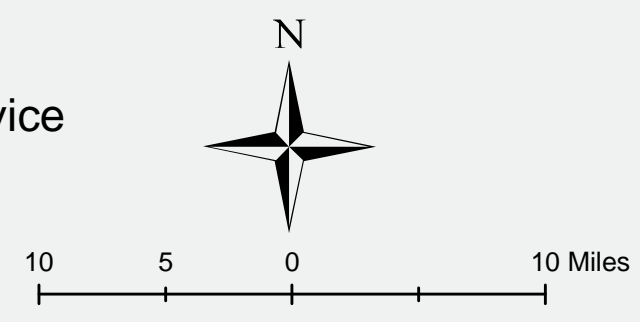
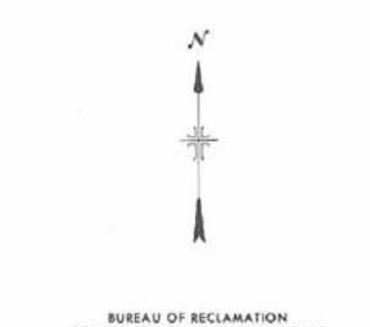
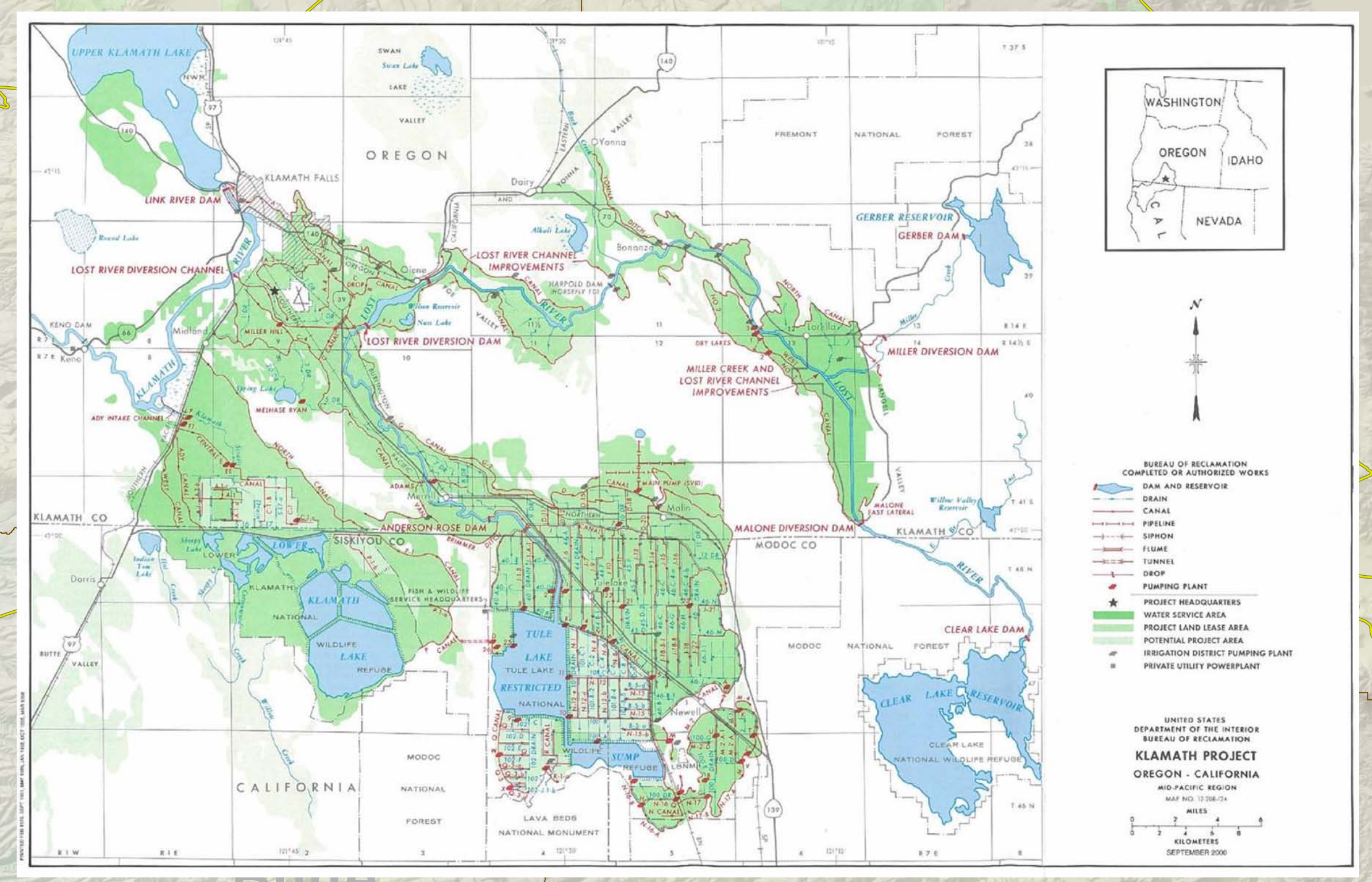
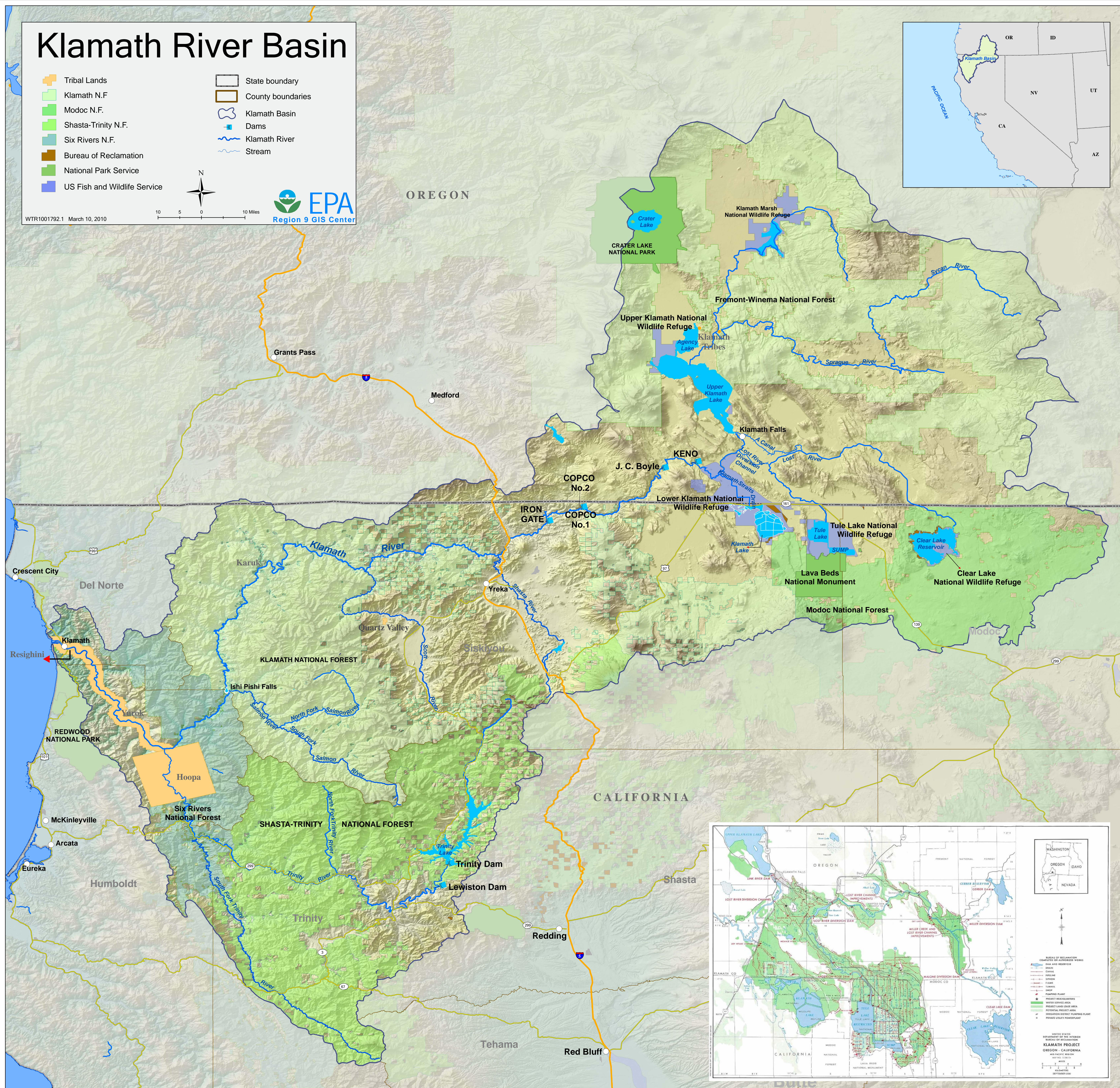


Klamath River Basin

-  Tribal Lands
-  Klamath N.F.
-  Modoc N.F.
-  Shasta-Trinity N.F.
-  Six Rivers N.F.
-  Bureau of Reclamation
-  National Park Service
-  US Fish and Wildlife Service
-  State boundary
-  County boundaries
-  Klamath Basin
-  Dams
-  Klamath River
-  Stream



WTR1001792.1 March 10, 2010



-  BUREAU OF RECLAMATION COMPLETED OR AUTHORIZED WORKS
-  DAM AND RESERVOIR
-  CANAL
-  PIPELINE
-  DIVERSION
-  FILLS
-  TUNNEL
-  DROP
-  TRAINING FLUME
-  PROJECT HEADQUARTERS
-  WATER DIVISION AREA
-  PROJECT LAND LEASE AREA
-  POTENTIAL PROJECT AREA
-  BUREAU OF RECLAMATION PROJECT AREA
-  PRIVATE UTILITY POWERPLANT

UNITED STATES DEPARTMENT OF THE INTERIOR
BUREAU OF RECLAMATION
KLAMATH PROJECT
OREGON - CALIFORNIA
MARCH 2010
SCALE: 1:50,000
DATE: SEPTEMBER 2009