

# **APPENDIX I**

## **Proposed Monitoring Program**

## **Proposed Monitoring Program**

The methodology and findings of the monitoring program are described in Appendixes E.2 and G. Components of the program include influent and effluent monitoring of flow, biochemical oxygen demand, suspended solids, oil and grease, priority pollutants, pesticides and other potential pollutants.

Receiving waters are monitored nearshore, onshore and offshore. Seven permanent stations are used for sampling sediments and collecting annual benthic samples of invertebrates for observing changes in the community structure of both soft and hard bottom communities.

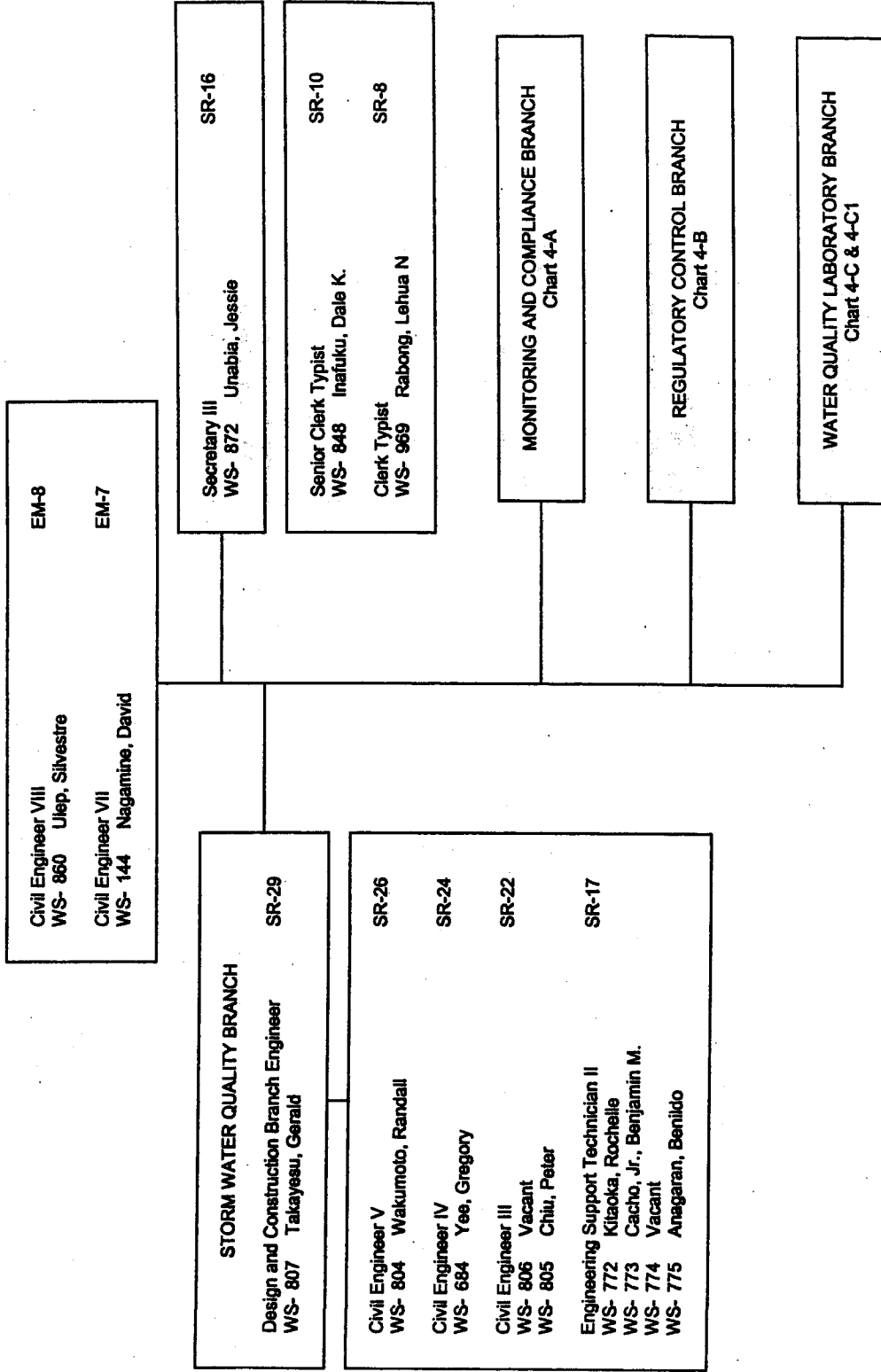
The organization and staffing of the city's compliance divisions are shown on Figures 1-1 through 1-4. In addition to the ongoing monitoring program, the city had sponsored a major investigation of Mamala Bay with the objective of determining the effect of all wastewater discharges on the coastal waters of southwest Oahu. Release of the final Mamala Bay Commission Report concluded that there were no significant public health or environmental impact due to the discharge of primary treated effluent through the Barbers Point Deep Ocean Outfall. The findings and recommendations of the Mamala Bay study should be carefully studied in preparation for changes in the existing monitoring program.

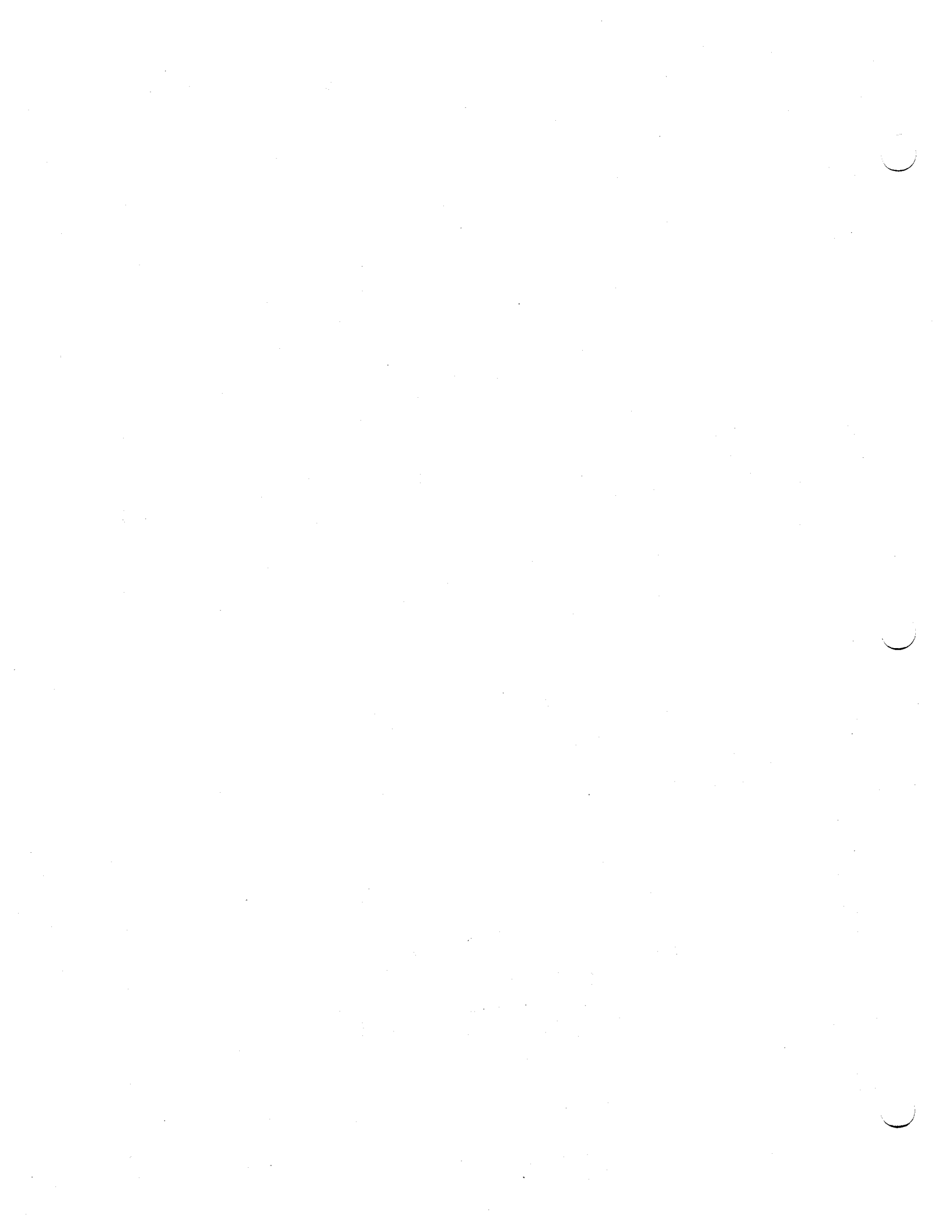
General recommendations based on findings of the City's Division of Environmental Quality, local experts and conclusions of the Mamala Bay Commission may include:

- ◆ More frequent monitoring of sediments
- ◆ Refinements of analytical techniques
- ◆ Implementation of a mussel-watch-type program
- ◆ Elimination of benthic biological monitoring
- ◆ More frequent monitoring of nonpoint sources

DEPARTMENT OF ENVIRONMENTAL SERVICES

DIVISION OF ENVIRONMENTAL QUALITY  
Chart 4





DEPARTMENT OF ENVIRONMENTAL SERVICES

DIVISION OF ENVIRONMENTAL QUALITY  
Chart 4-A

MONITORING AND COMPLIANCE BRANCH  
SR-29  
Design & Construction Branch Engineer  
WS- 113 Tanimoto, Ross

Civil Engineer IV  
WS- 980 Vacant  
Annual Reports  
SR-24

Civil Engineer III  
WS- 868 Ababa, Jerome  
Air Permits Program  
SR-22

Supervising Water Quality Technician  
WS- 310 Muranaka, Alvin  
Ocean Team  
SR-21

Water Quality Technician III  
WS- 696 Oph, Steven  
SR-17

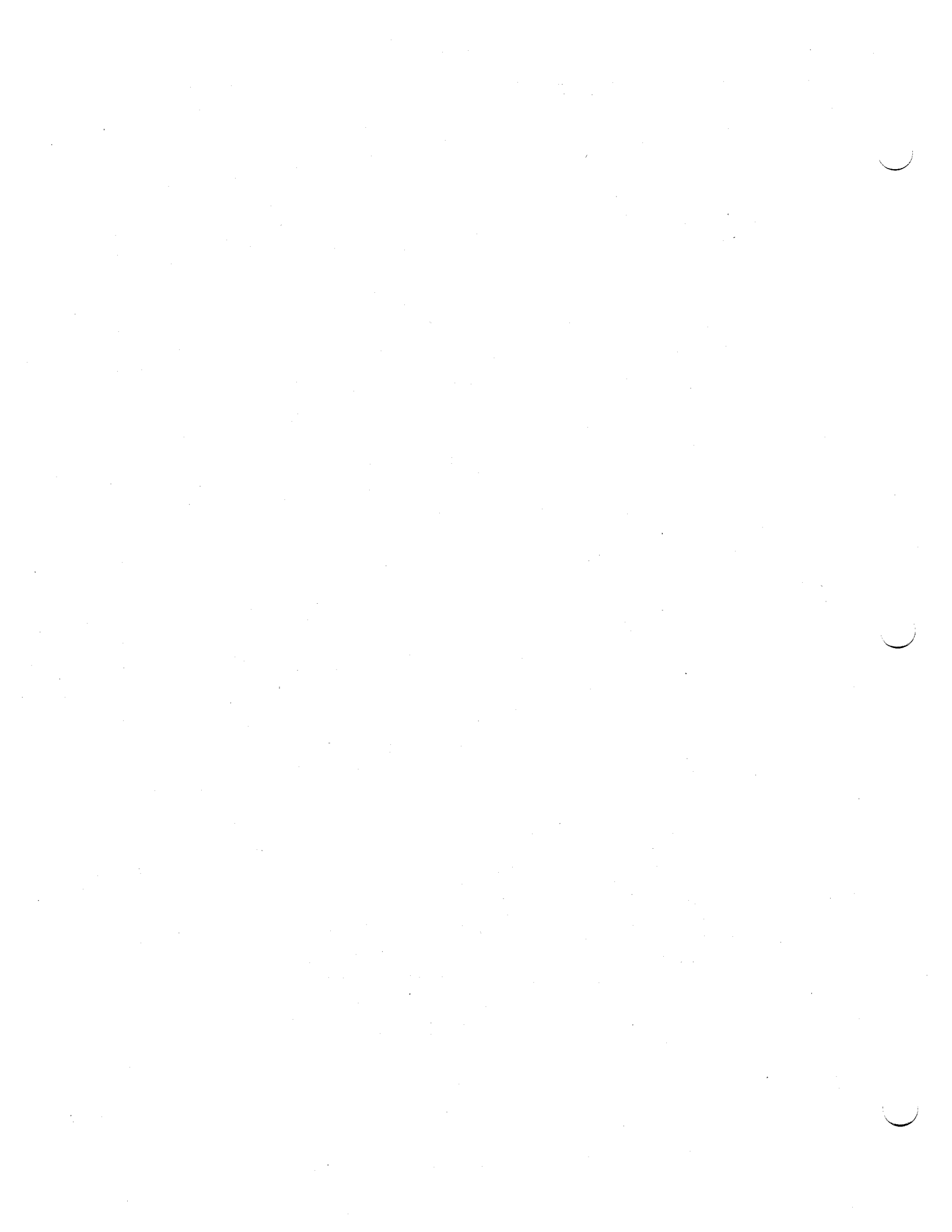
Water Quality Technician II  
WS- 393 Wolkovitch, Gary  
WS- 394 Fenske, Derrick W.  
WS- 406 Oliveira, Ernest  
WS- 614 Kishi, Colin  
WS- 897 Miyahara, Jared  
WS- 898 Miyahara, Henry  
SR-15

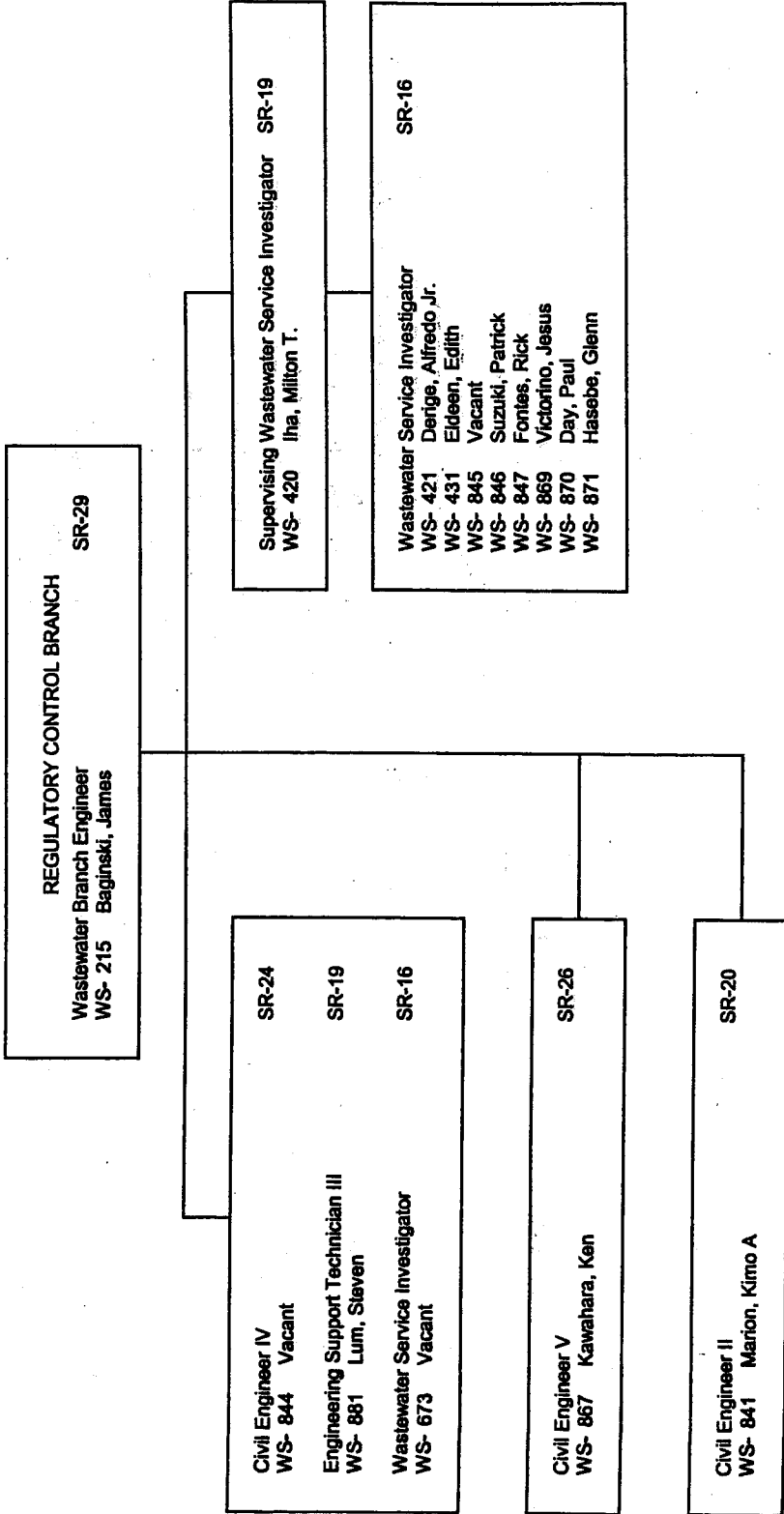
Engineering Support Technician II  
WS- 432 Pamela Nonaka  
WS- 926 Alphonso, Venansio  
SR-17

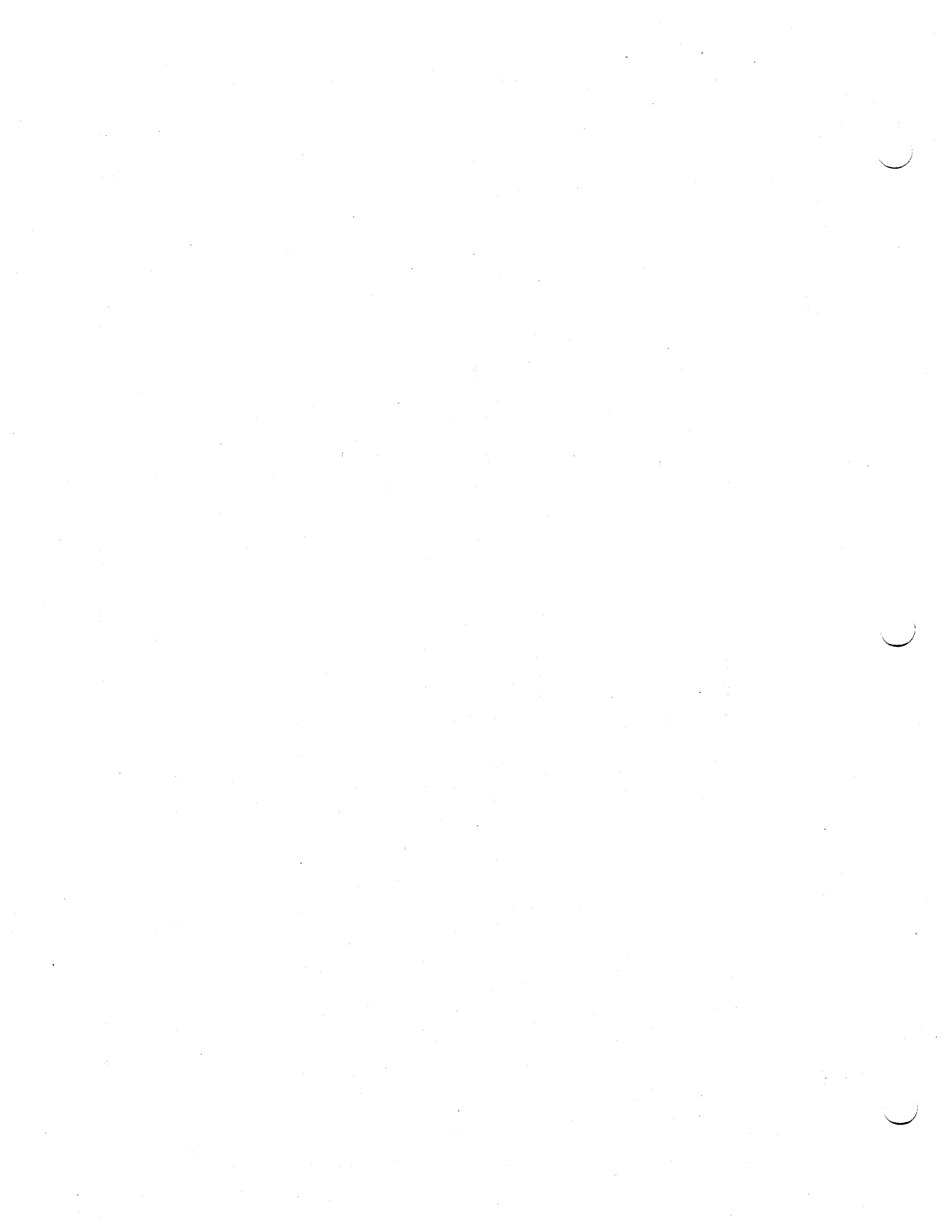
Civil Engineer V  
WS- 529 Piegrass, Don  
WS- 842 Jaramilla, Ferdinando  
Meiro  
SR-26

Civil Engineer V  
WS- 264 Vacant  
WS- 882 Vacant  
Windward  
SR-26

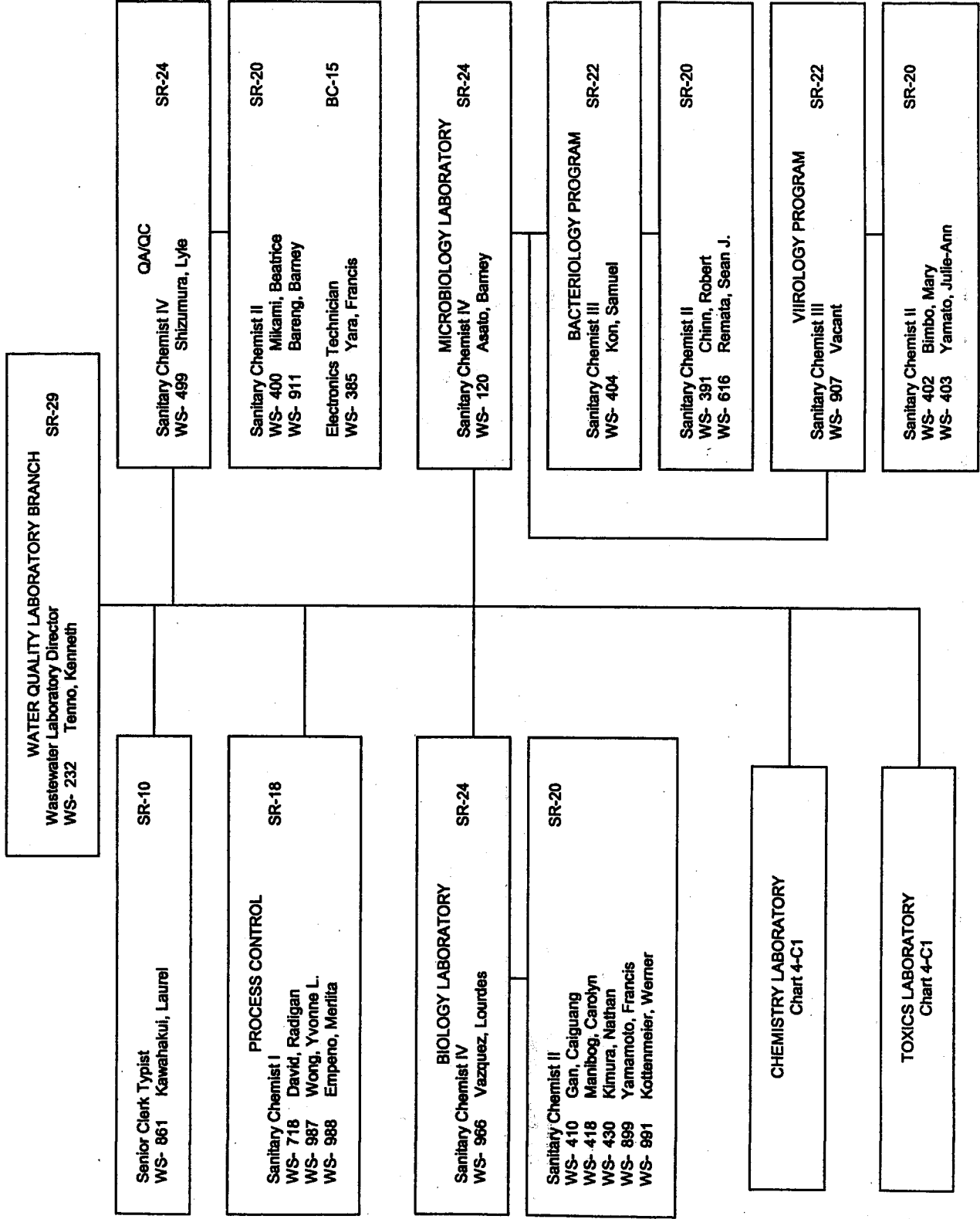
Civil Engineer V  
WS- 408 Lum, Jared  
WS- 843 Vacant  
Leeward  
SR-26  
Electrical Engineer V  
WS- 951 Lung, Edmund  
SR-26

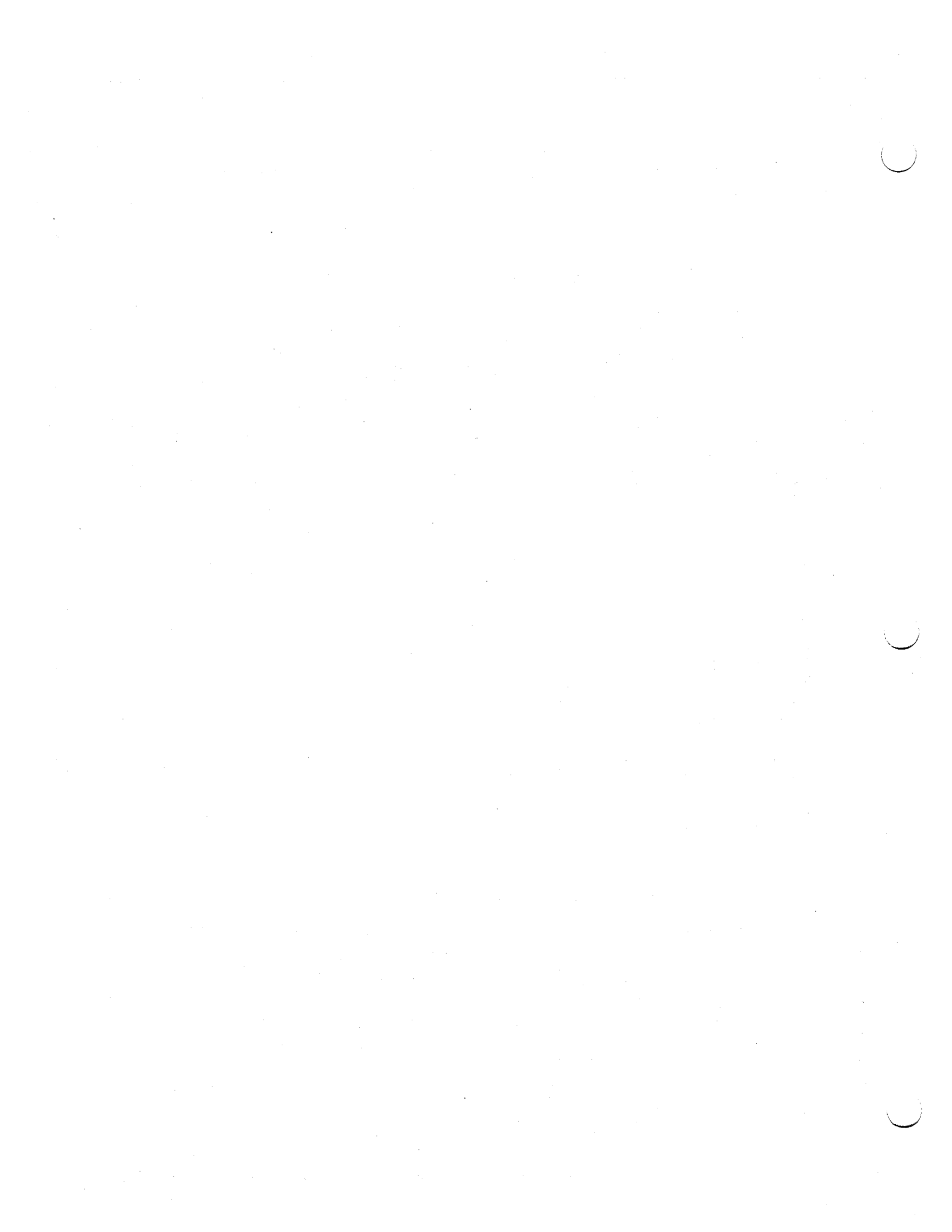












DEPARTMENT OF ENVIRONMENTAL SERVICES

DIVISION OF ENVIRONMENTAL QUALITY

Chart 4-C1

WATER QUALITY LABORATORY BRANCH

**CHEMISTRY LABORATORY**  
 SR-24  
 Sanitary Chemist IV  
 WS- 119 Takata, Dale

**NPDES MONITORING**  
 SR-22  
 Sanitary Chemist III  
 WS- 405 Arbutnot, Stephen

**SR-20**  
 Sanitary Chemist II  
 WS- 303 Kawada, Alvin  
 WS- 347 Koeaki, Glenn  
 WS- 565 Kawamoto, Gregg  
 WS- 859 Karm, Lellani  
 WS- 976 Vacant  
 WS- 977 Vacant

**SR-13**  
 Laboratory Technician II  
 WS- 230 Vacant  
 WS- 287 Vacant

**PRETREATMENT PROGRAM**  
 SR-22  
 Sanitary Chemist III  
 WS- 473 Edmundson, Robert

**SR-20**  
 Sanitary Chemist II  
 WS- 286 Matsuda, Eric M  
 WS- 428 Miyake, Alan

**TOXICS LABORATORY**  
 SR-24  
 Sanitary Chemist IV  
 WS- 121 Goo, Reginald

**ORGANIC ANALYSES**  
 SR-22  
 Sanitary Chemist III  
 WS- 285 Takazawa, Richard

**SR-20**  
 Sanitary Chemist II  
 WS- 427 Vacant  
 WS- 428 Vacant  
 WS- 429 Yuen, Kyle

**INORGANIC ANALYSES**  
 SR-22  
 Sanitary Chemist III  
 WS- 417 Salazar-Figueroa, Lilela

**SR-20**  
 Sanitary Chemist II  
 WS- 392 Vacant  
 WS- 398 Vacant

**AIR MONITORING**  
 SR-20  
 Sanitary Chemist II  
 WS- 965 Vacant

