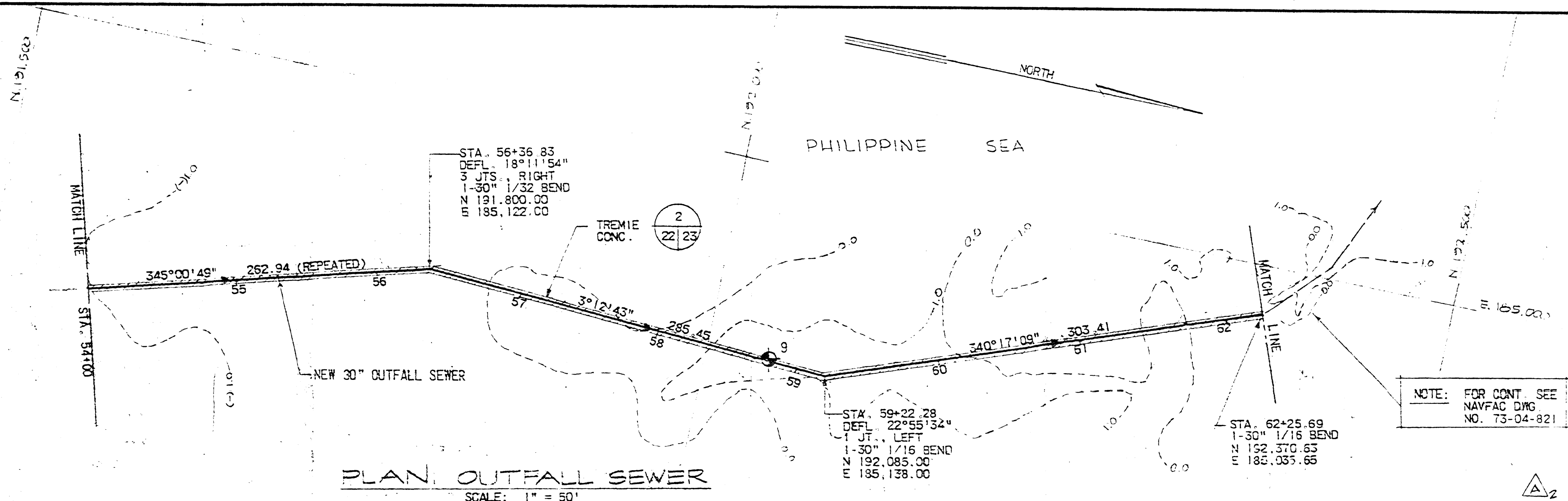


REVISIONS			
NO.	DESCRIPTION	PREP'D BY	DATE
1	REVISED TO SHOW AS BUILT CONDITIONS	CS	11-9-80

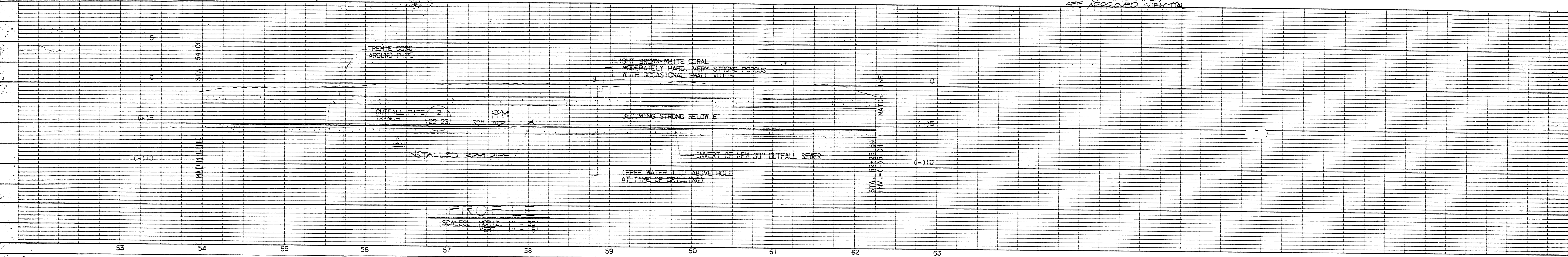


PLAN, OUTFALL SEWER  
SCALE: 1" = 50'

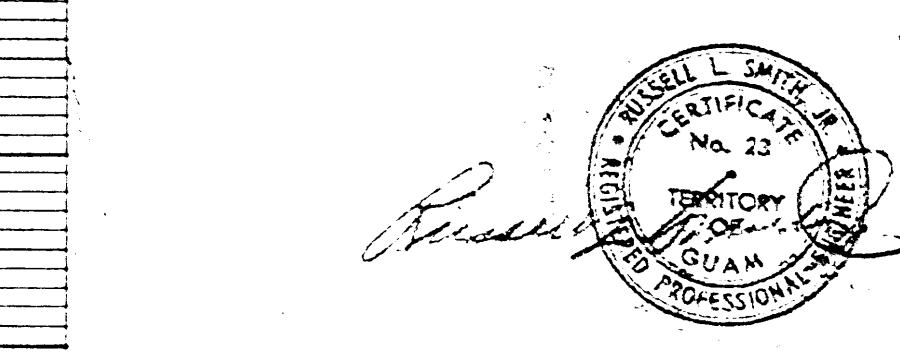
NOTE: FOR CONT SEE  
NAVFAC DRG  
NO. 73-04-821

NOTE:  
ASBESTOS CEMENT PIPE STRENGTH CLASS  
SHALL BE DETERMINED IN ACCORDANCE  
WITH SPECIFICATION SECTION-LES

RM (TECHNICAL PIPE)  
SEE APPROVED QUANTITY

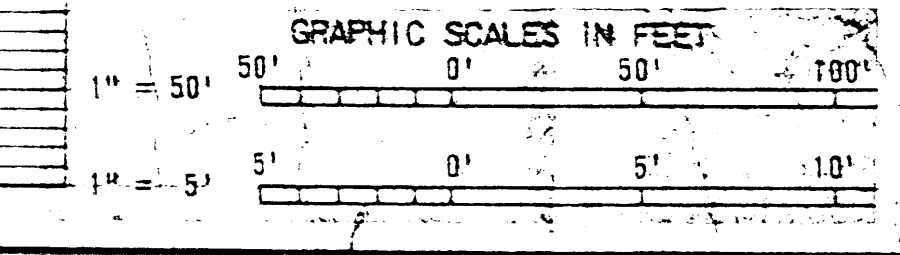


PROFILE  
SCALE: HORIZ. 1" = 50'  
VERT. 1" = 5'



ASA AUSTIN SMITH & ASSOC., INC.  
ENGINEERS - SURVEYORS  
OFFICE: 1000 G ST. SUITE 200  
AGADUZAN, GUAM, M.I.

DEPARTMENT OF THE NAVY - NAVAL FACILITIES ENGINEERING COMMAND  
OFFICER IN CHARGE OF CONSTRUCTION  
NAVAL FACILITIES ENGINEERING COMMAND CONTRACTOR, HONOLULU, GUAM, M.I.  
**NORTHERN DISTRICT SEWERAGE SYSTEM**  
NORTHERN LINK AND TREATMENT PLANT  
SUM, RIFIAN, ISLANDS  
PLAN & PROFILE  
OUTFALL SEWER  
STA. 54+00 TO STA. 62+25.69



APPROVED: [Signature] DATE: 7/23/75  
OFFICER IN CHARGE: [Signature]  
NAVFAC DRAWING NO. F 80091  
CONSTR. CONTRACT NO. 73-04-821  
SPEC. 41-74-0249 SHEET 22 OF 22