

Campo-Cottonwood Sole Source Aquifer Designated Area

CALIFORNIA



Campo-Cottonwood
Sole Source Aquifer







Notes and Explanation:

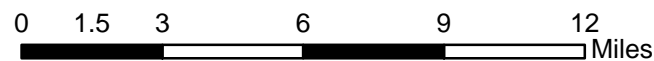
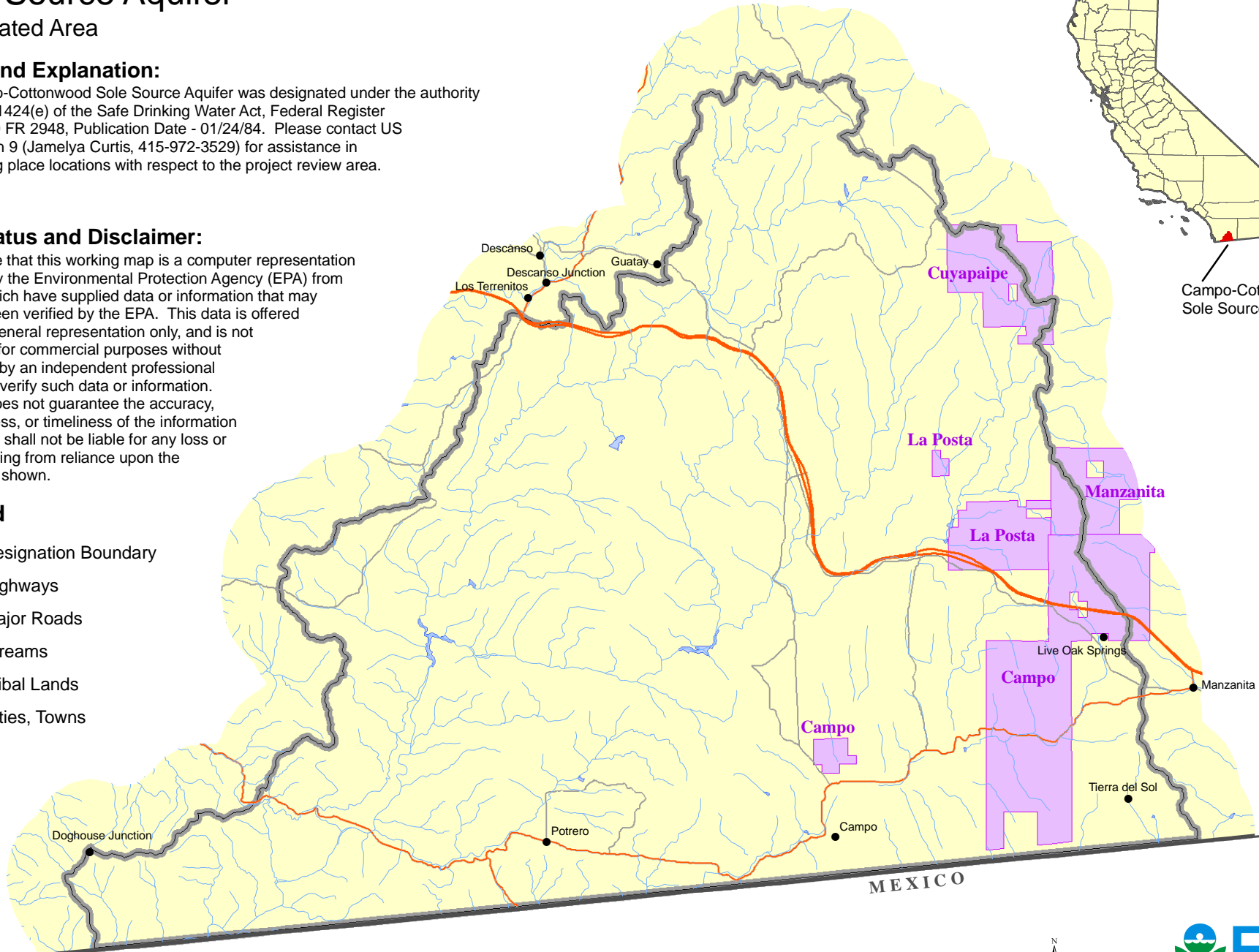
The Campo-Cottonwood Sole Source Aquifer was designated under the authority of Section 1424(e) of the Safe Drinking Water Act, Federal Register Citation-49 FR 2948, Publication Date - 01/24/84. Please contact US EPA Region 9 (Jamelya Curtis, 415-972-3529) for assistance in determining place locations with respect to the project review area.

Map Status and Disclaimer:

Please note that this working map is a computer representation compiled by the Environmental Protection Agency (EPA) from sources which have supplied data or information that may not have been verified by the EPA. This data is offered here as a general representation only, and is not to be used for commercial purposes without verification by an independent professional qualified to verify such data or information. The EPA does not guarantee the accuracy, completeness, or timeliness of the information shown, and shall not be liable for any loss or injury resulting from reliance upon the information shown.

Legend

-  Designation Boundary
-  Highways
-  Major Roads
-  Streams
-  Tribal Lands
-  Cities, Towns



WTR0801656.4 Oct. 2008