

US EPA ARCHIVE DOCUMENT



Tribal Solid Waste and Recycling Programs

Saskia van Gendt
US EPA Region 9
October 23, 2008

Why Recycle & Compost?

HEALTH

- Recycling Aluminum
 - 95% less air pollution
 - 97% less water pollution
 - One can = energy savings of half a can of gasoline

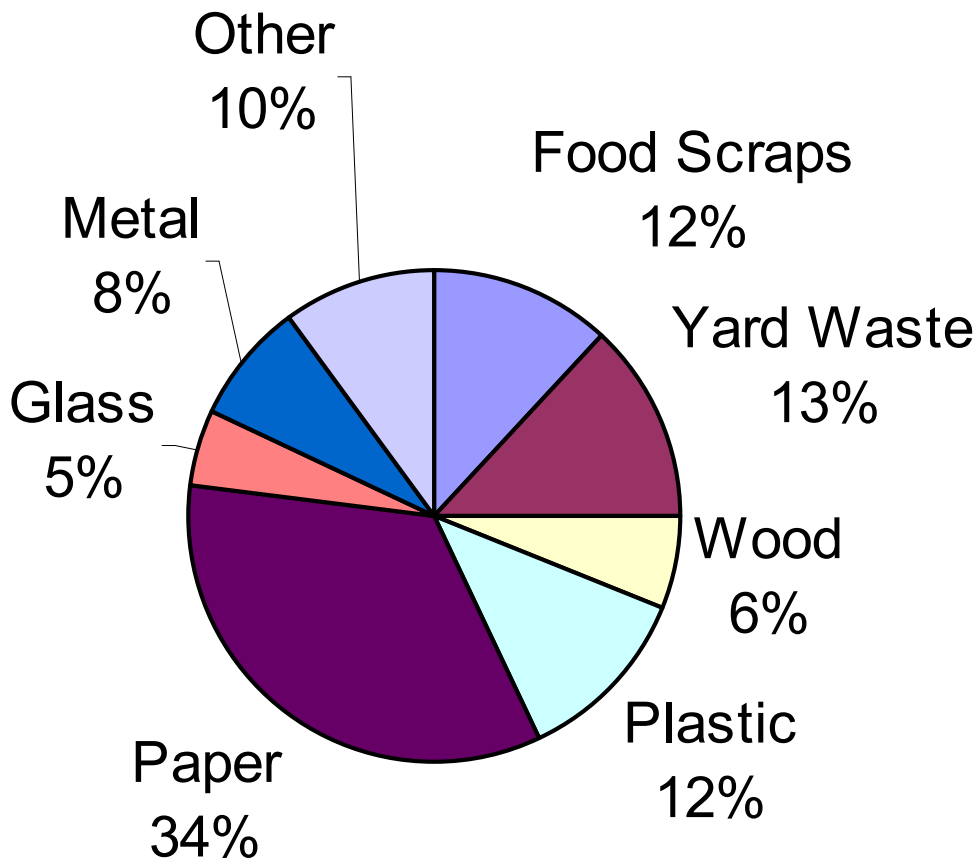
JOBS

- 1.1 million jobs in the United States
- \$236 + BILLION in annual revenues

ENERGY CONSERVATION

- Reduces greenhouse gas emissions
- Landfills are the number one source of methane

● ● ● | What's Wasted?





Examine your waste stream



Components of a Successful Waste Management Program

- 1) - Tailored to your Community
- 2) - Innovative
- 3) - Enforceable
- 4) - Financially Sustainable
- 5) - Community Involvement



Component #1: Tailored to your Community

- Culturally appropriate and specific
- 1st step = Solid waste management plan
 - Identify wastes in your community
 - Identify how to manage them
 - Determine the needs



Component #1: Tailored to your Community

- Does your tribe have a solid waste management program and how does it address recycling?
- Where can the recycling go?
 - How far is it?
 - How is it transported?
 - How is it paid for?
 - How much does it cost?

What are the choices of recycling programs?

- **Curbside Collection**
 - Single stream
 - Sorted bins
 - Plastic bag based
- **Community Drop offs**
 - Transfer Stations
- **Compost Collection**



Component #2: Innovation

- Be creative!
- Think about what will get people:
 - ✓ ...involved!
 - ✓ ...excited!
 - ✓ ...a promoter of the program!

Component #2: Innovation



- Fort Independence Reservation, California
 - Raffle/prizes for participants in the recycling program
 - Green waste goes to the community garden
 - PSAs (radio and TV)

Recyclables Heading to Market





Mulch for community garden



Peppers in the garden

Keys to Success

- Convenience
- Education
- Incentives
- Pay-as-you-throw
- Curbside collection
- Economically sound

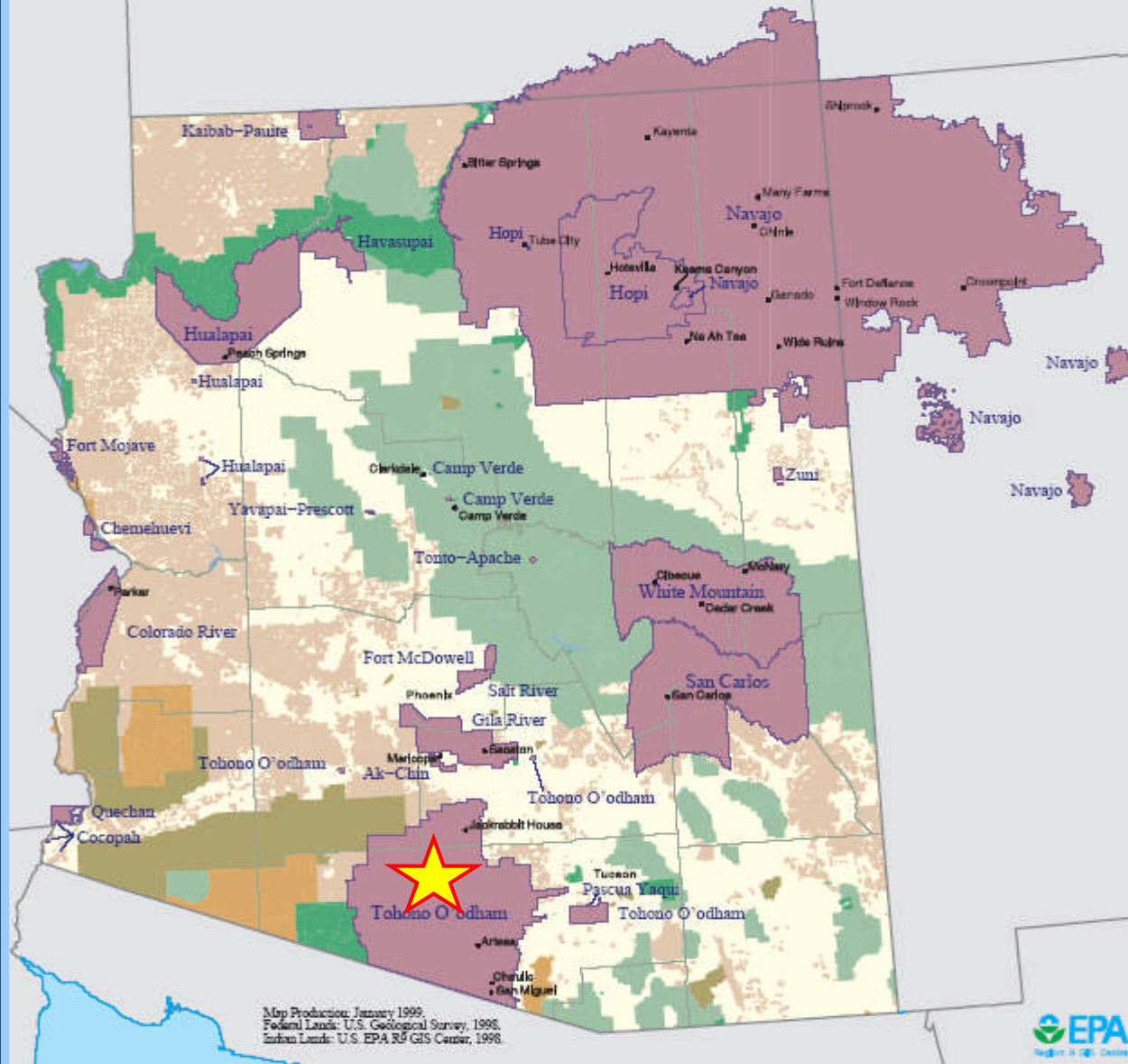
Component #3: Enforceable

- Solid Waste codes/ ordinances
- Individuals identified to enforce
- Penalties – civil and criminal

ARIZONA

Tribal & Federal Lands

- Populated place within one mile of Tribal Lands



Component #3: Enforceable

- The Tohono O'odham Nation
 - Solid waste code – used to inspect facilities
 - Created a Solid Waste Enforcement Office
 - Have credentialed inspectors
 - Partnerships with tribal law enforcement



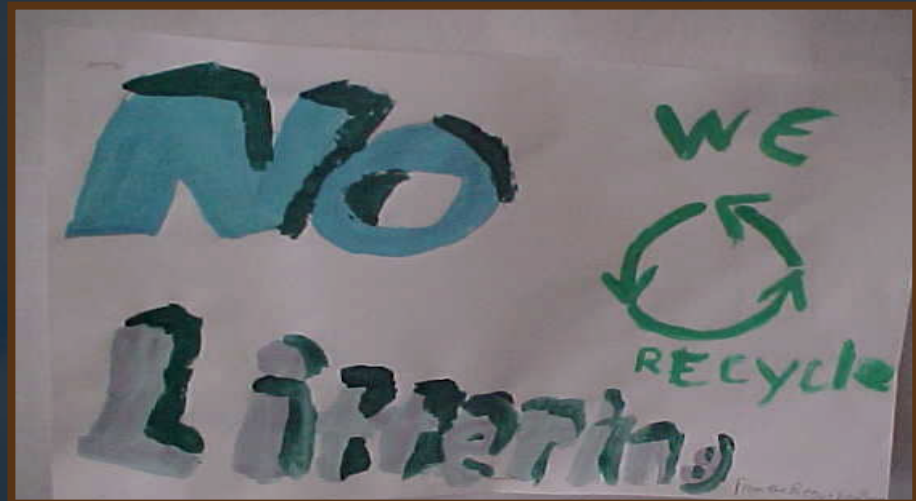
Component #4: Financially Sustainable

- **Start with a Business Plan** – look at all possibilities for funding:
 - ✓ User fees
 - ✓ Provide service to outside entities
 - ✓ Internal funds

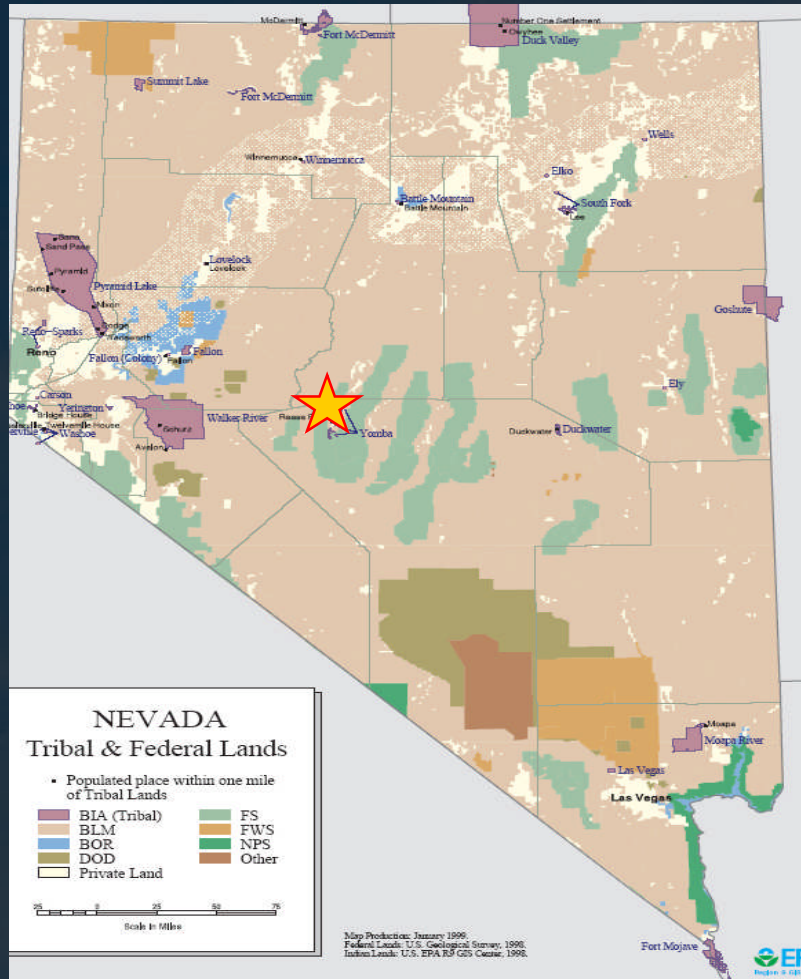


Component #5: Community Involvement

- Community involvement = community support
 - Get kids involved
 - Community survey/questionnaire
 - Community events
 - Council meetings



Component #5: Community Involvement



- Yomba Shoshone Tribe, Nevada
 - Community survey on waste management
 - School presentations/activities
 - Booth at community festivals
 - Kids recycling group

Auto Cleanup Project as a Result of Community Outreach



Summary

- Address current solid waste management program
- Perform a waste characterization
- Research recycling and composting options
- Research transportation
- Implement your Project
- Identify your keys to success



Contact Information

Saskia van Gendt

(415) 947-4103

Vangendt.Saskia@epa.gov