

US EPA ARCHIVE DOCUMENT

Recycling In California Indian Country

From a great idea
to the real deal

Project Overview: A Tribal Recycling Center

Phyllis Romero-Tobin
Research Analyst Tribal EPA
Hopland Reservation
Hopland Band of Pomo Indians

Lets talk Trash

Rethink your Trash

Think of the trash stream.

Trash = Money.

It takes money to remove trash. Trash can make money

If you understand that separating trash that has value out of the stream; makes less trash.... then

convert trash streams into trash that gives you money.

Reduce potential trash coming onto the Rez that you have to pay to remove; Styrofoam and cardboard for example.

“OR” get a grant from California to make stuff with your trash. Coffee ground Logs, Tire Shingles, insulation...

You can make money making something from your trash.

Gather the Metal to cut up for transport to the metal recycler



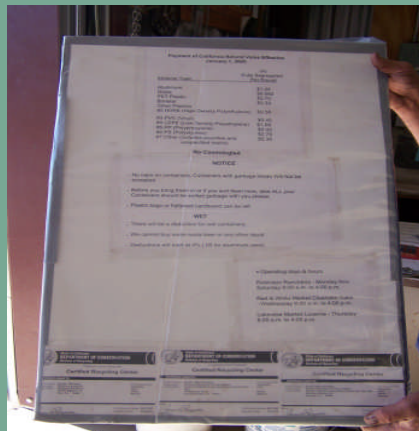
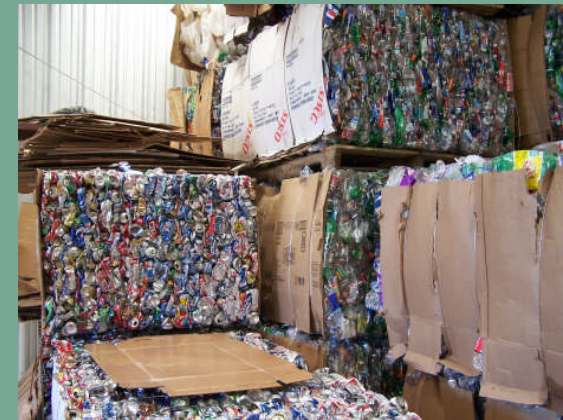
How many Pounds Make a Ton

Measure your CRV trash stream to see if you can support a **Recycling Center**.

Find other CRV trash like, Smoke shops, Casinos, Gyms, Community hall and Tribal Admin. Make agreements to take it off their hands. If that isn't enough find an "account" off Rez.

Make an agreement to provide a container you will keep empty

Visit another Tribal Recycling Center and adjust what you see for your needs



Invite another Tribe to help you gauge if you can support a Recycling Center



Moving Material Off Site

- Tribes recognize the **time** to organize this concerted effort **is now**.
- Now abandoned cars are **worth** their weight **to remove** them from their resting places.
- Tear down Appliances into **separate** piles of **metal**. If it doesn't look like an appliance you won't be charged for it. Take it to a **metal recycler for cash!**
- Refrigerators are the exception. They have Haz-Gas inside.
- **Recycle** containers full of **aluminum** cans, **plastic** bottles, and **glass** needed to trade in for cash.

This great lawn art can become \$\$\$
because of the cost of metal!!



Show Me the Money

- It would be helpful to explain that Recycling Center is not a money making enterprise for the Tribe.
- The Recycling Center is a **monetary incentive** to **sort CRV weight out of the trash** for the individual recycler.
- They get **chump change** for removing it from the waste stream.

“The Paperwork”

a Cliff Note List to follow

- Grants like GAP from Region 9 EPA and CIWMB Tire Grant are the jumpstart to financing Recycling.
- Write an Ordinance to submit to Tribal Council.
- Write a Memorandum of Agreement to protect Tribal Sovereignty with California State.
- Complete the Permit Process in Sacramento with Department of Conservation.

Create a Green Team to:

- Find Two strong (physically) mathematicians from the Tribe. They both must be able to drive in heavy traffic, follow maps, and think clearly in an emergency situation.
On the Rez, They will segregate the CRV waste stream and store in an areas for disposal (Transport)
- They will venture to sites to collect CRV on days not designated “Recycle Days” weigh it and report it to the Green Team Leader.
- They will operate the Recycle Days from set up to break down.

Recycling staff hiding in a EPA Staff Picture, and mathematicians EPA Tribal Youth that are growing muscle



The Green Team Leader Tribal Mastermind

Find a Green Team Leader who will develop policies and procedures for a waste pilot program

- Team Leader will process appropriate paperwork.
- First create a Tribal resolution and have it signed off by Tribal Chair. Write a State Memorandum of Agreement and mail it to the proper State authority to protect Tribal Sovereignty.
- Go to Sacramento with two ID's, California And Tribal to:
- Read the Handbook
- Take a test
- Provide pictures of Signage and Site for State Certification.

- Secondly the Leader will keep track and log paperwork for redemptions on the Rez and Paperwork for the Transfer Station.
- The leader will get cash for the drawers and keep track of drawer at the beginning and end of Recycle Day.

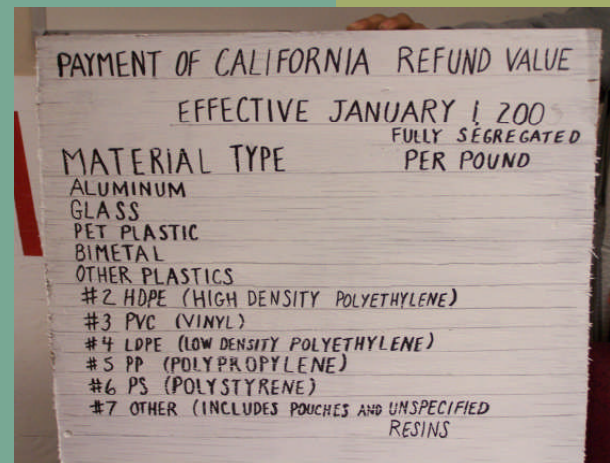
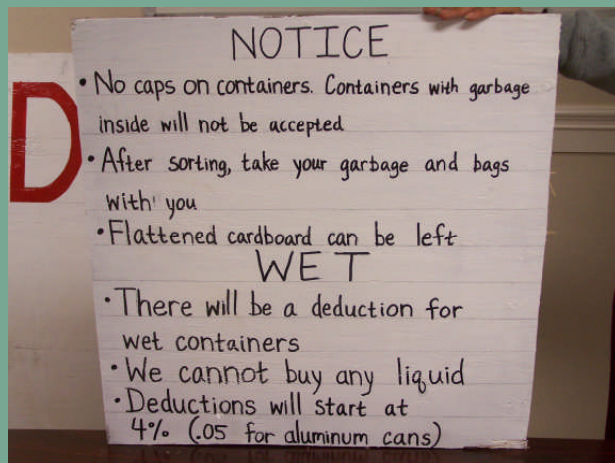
Tribal Green Team Leader showing us the paperwork on power point.



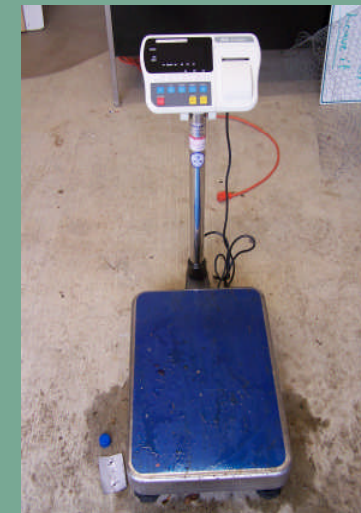
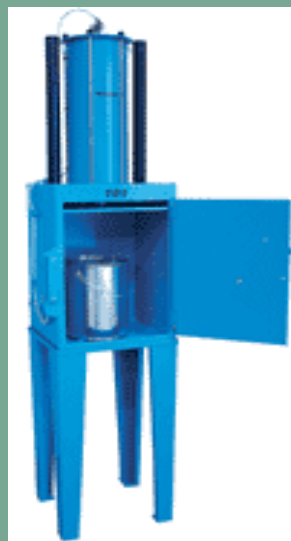
EPA Committee Members THPO, Casino Commissioner with Tribal Chair



Bring Pictures Of Signage Required



Scaled down equipment for a small or mobile Recycling Center



Luck is when preparation meets opportunity

Seneca... Roman Philosopher

- Tribes that want to operate a Recycling Center to channel the **weight of CRV** items out of the **waste stream** have to generate a **Small Working Plan**.
- The Tribe needs to file paperwork with the state and write a grant to make it happen.

The Small Working Plan

Location

A Location that can handle light traffic

Containers

For collection, storage, and travel

Transportation

To the Transfer Station, A good running truck and trailer with space to carry large loads

Equipment

To weigh, collect, and compress

The Small Working Plan

- **Education**
- A class for your recycle crew to understand the job
- **Secondary location**
- In addition to a Recycling Center you should create a free holding area labeled for separation and a dumpster for surplus waste.

We are checking the Scale Weight! We're Double checking our Cash Back!!



Culturally Tribes are Hunters and Gatherers

There is an innate behavior to Tribes to **search**, **collect**, and add value to things around them.

There is an added monetary value to CRV items in the trash stream.

The **Rez** will always have **people looking** for **more** CRV items once they have sorted theirs; to add **extra weight**.

They will be “**Very Attentive**” to the scale and the money changer!!!