

US EPA ARCHIVE DOCUMENT



DEPARTMENT  
OF TOXIC  
SUBSTANCES  
CONTROL

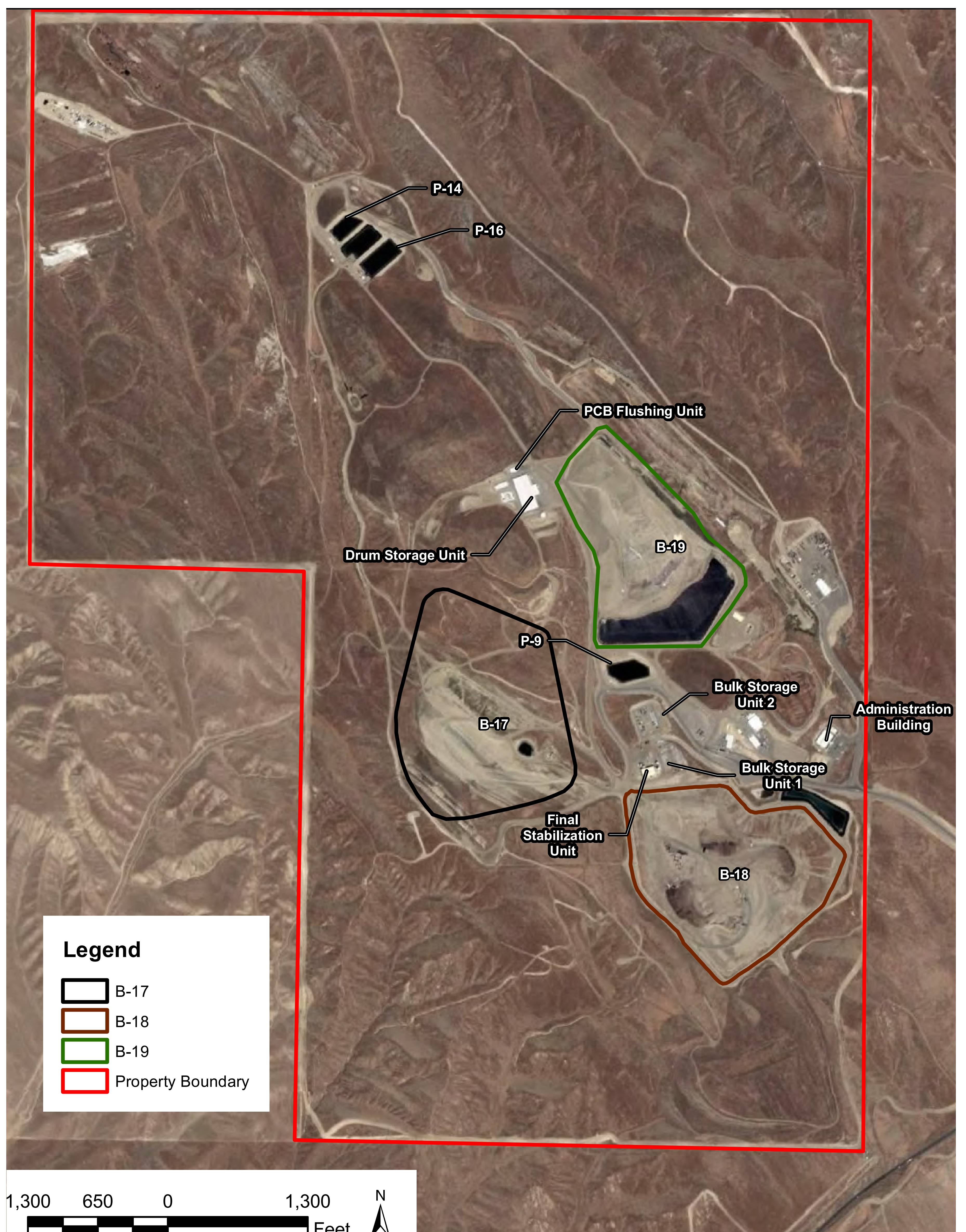
# Hazardous Waste Permitting

WASTE MANAGEMENT, INC. • KETTLEMAN HILLS FACILITY



UNITED STATES  
ENVIRONMENTAL  
PROTECTION  
AGENCY

## Facility Diagram



## Project Location



Avenal is 6.5 miles North-West from Waste Management.  
Kettleman City is 3.5 miles North-East from Waste Management.  
Hazardous wastes are transported to KHF by truck via I-5 to SR-41.