

Statutory Overview

Clean Water Act

Set Water Quality Standards

Monitoring and Assess Waterbodies

List Impaired Waterbodies
303(d) List

Develop Total Maximum
Daily Loads

Implement Loads
NPDES Permitting &
Nonpoint Source Controls

Florida Watershed Restoration Act


Adopt Verified List

Adopt TMDL in Rule

Adopt Basin Management
Action Plan


Florida Watershed Restoration Act: Agriculture

- Authorizes FDACS to Develop and Adopt BMPs to Address Agricultural Non-Point Sources
- Implementation Provides “Presumption of Compliance” with State Water Quality Standards
 - Requires Notice of Intent (NOI) to FDACS to Enroll Operation
 - Manual specifies record-keeping requirements



FLORIDA DEPARTMENT OF AGRICULTURE AND CONSUMER SERVICES
Office of Agricultural Water Policy

Charles H. Bronson, Commissioner - Richard J. Budell, Director



Department Home

OAWP Home

Organization

BMPs

Best Management Practices

IA

Implementation Assurance

MILs

Mobile Irrigation Labs

Technical Assistance

SWCC

SWCDS

Maps

Links

FAQs

Staff

Contact Us

Notices of Public Meetings, Hearings, or Workshops


Search

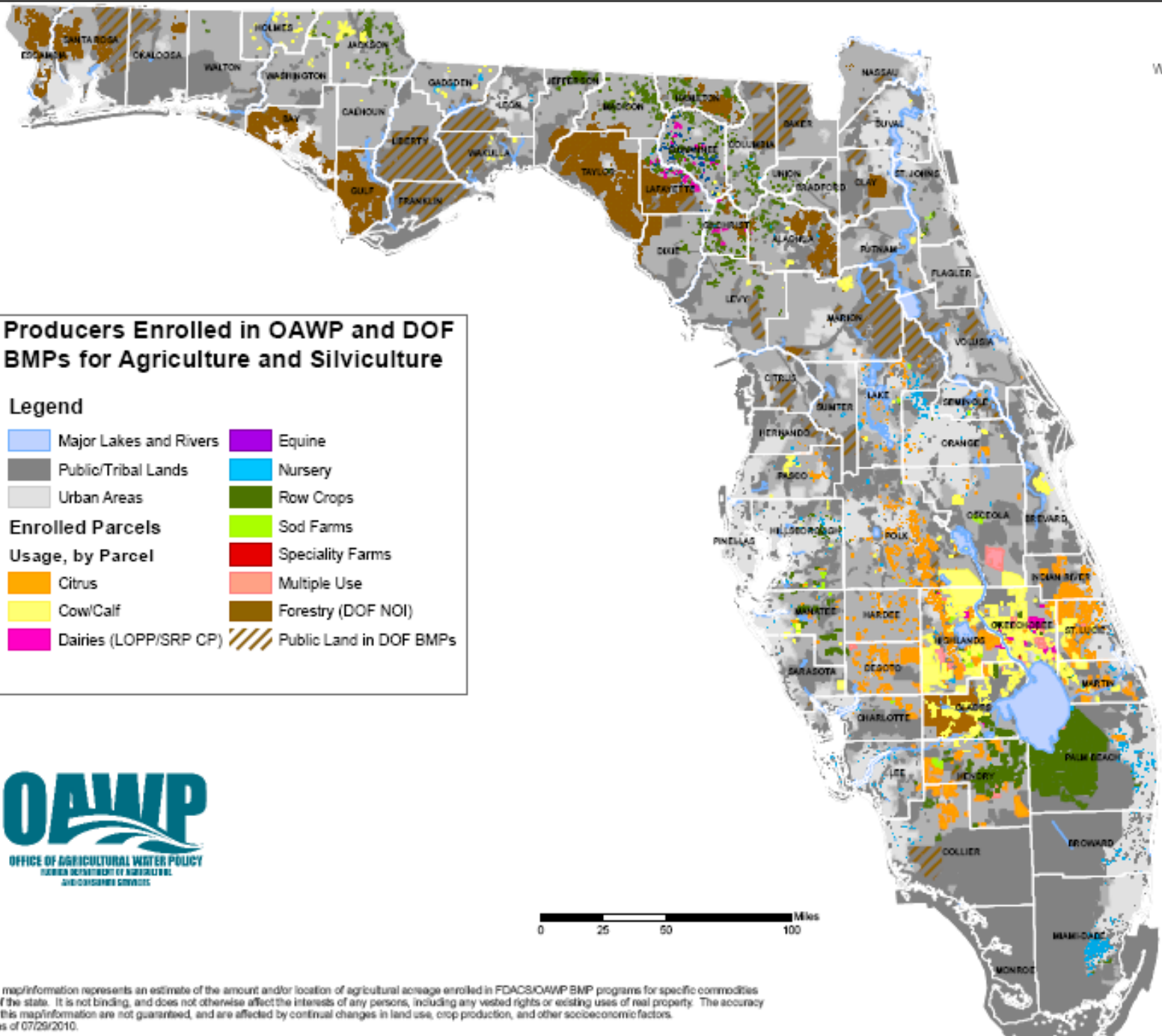
Select a Division

Best Management Practices Rules, Manuals, and Other Documents

OAWP Adopted BMPs *	Rules	BMP Manuals	NOI Forms	Related Technical Documents
Ridge Citrus	5E-1.023	129KB PDF	104KB PDF	
Indian River Citrus	5M-2	8MB PDF Updates 1.4MB PDF	116KB PDF	
Peace River Citrus	5M-5	1.7MB PDF	38KB PDF	
Gulf Citrus	5M-7	11.7MB PDF	36KB PDF	
Lake Okeechobee BMPs	5M-3			
Florida Container Nurseries	5M-6	2.3MB PDF	39KB PDF	
Vegetable & Agronomic Crops	5M-8	1.7MB PDF	38KB PDF EAA/C-139 42KB PDF	
Florida Sod	5M-9	2MB PDF	75KB PDF	
Manure Application	5M-10			135KB PDF 405KB PDF
Florida Cow/Calf Operations	5M-11	3MB PDF	420KB PDF	
Conservation Plans for Specified Agricultural Operations	5M-12		162KB PDF	405KB PDF 623KB PDF 466KB PDF

Other FDACS Adopted BMPs	Rules	BMP Manuals	NOI Forms	Related Technical Documents
Silviculture	5I-6	25MB PDF	86KB PDF	
Aquaculture	5L-3	728KB PDF		98KB PDF

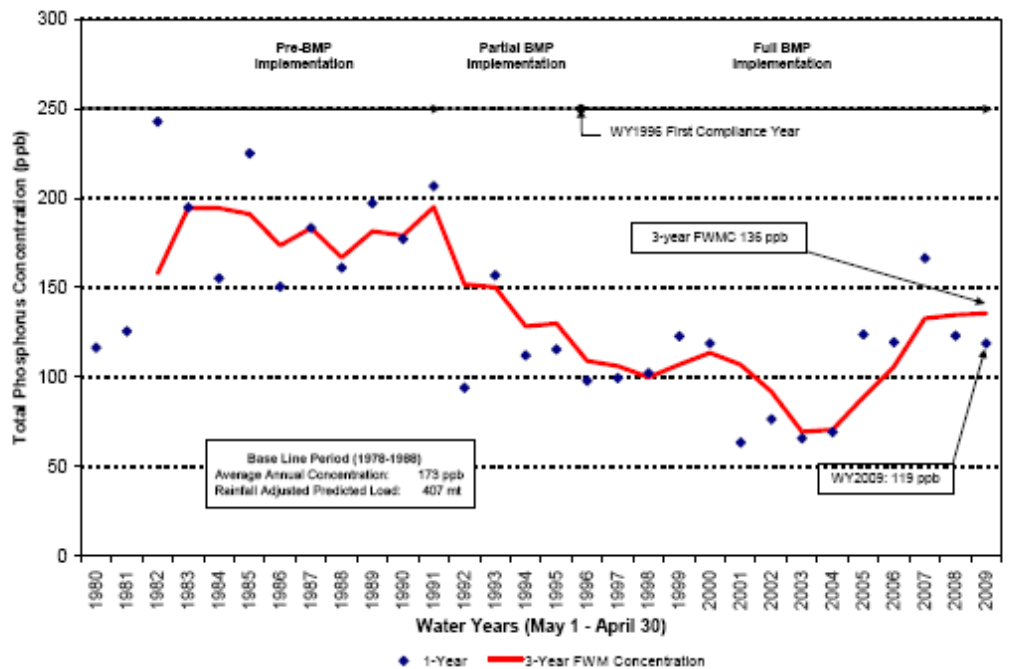
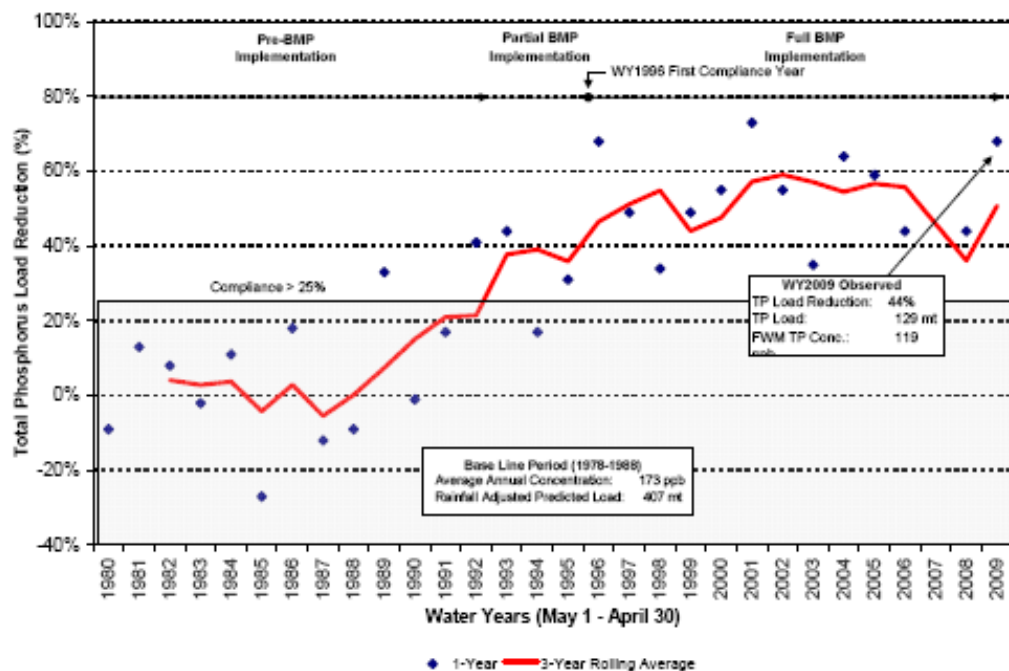
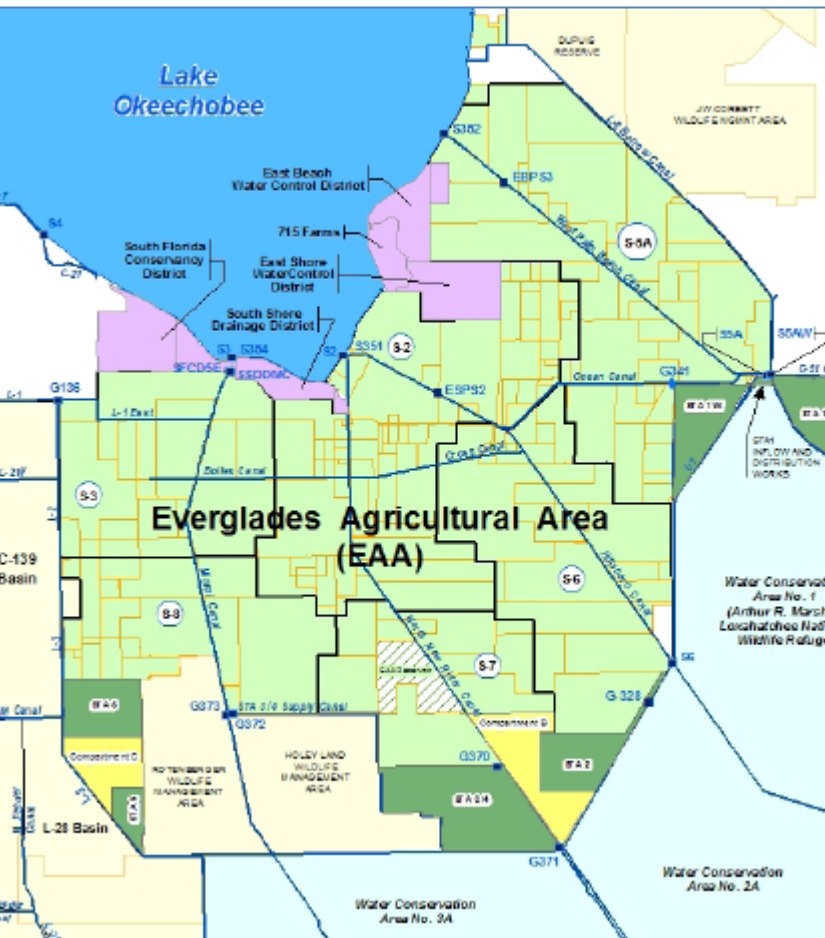




Disclaimer: This map/information represents an estimate of the amount and/or location of agricultural acreage enrolled in FDACS/OAWP BMP programs for specific commodities and/or regions of the state. It is not binding, and does not otherwise affect the interests of any persons, including any vested rights or existing uses of real property. The accuracy and reliability of this map/information are not guaranteed, and are affected by continual changes in land use, crop production, and other socioeconomic factors. Data is current as of 07/29/2010.

Phosphorus Source Controls BMP Implementation

Source: 2010 South Florida
Environmental Report (Draft)



Modified Hydrology

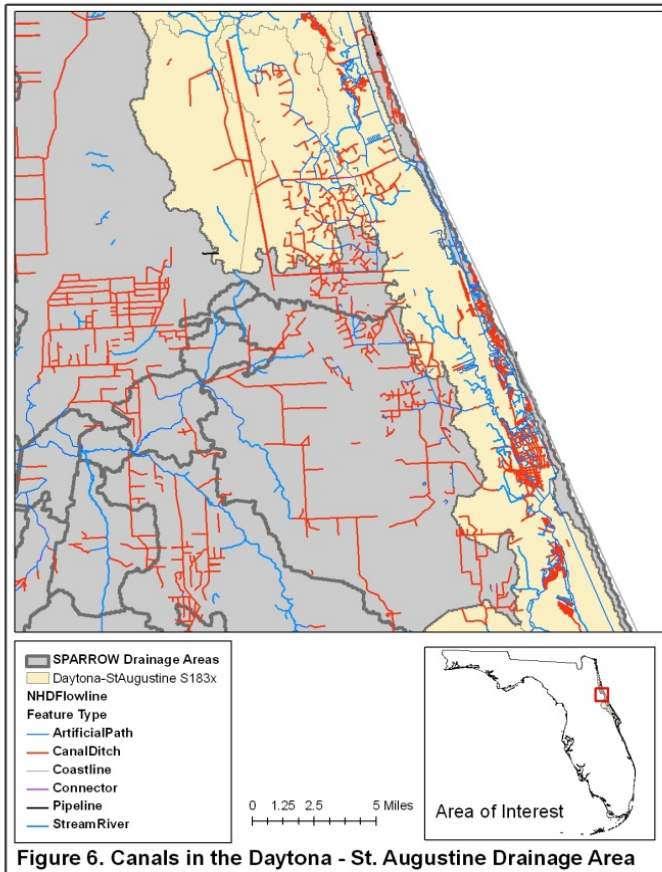


Figure 6. Canals in the Daytona - St. Augustine Drainage Area

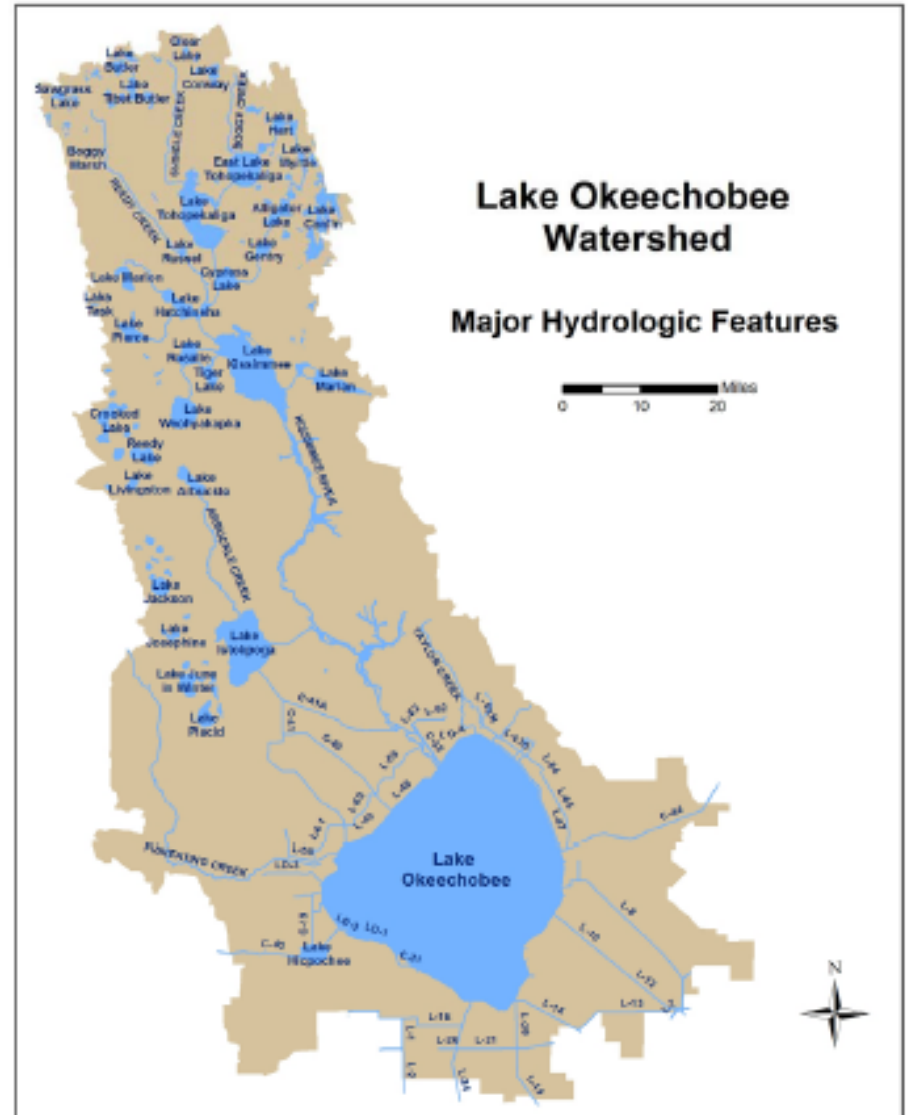


Figure 10-1. Major hydrologic features of the Lake Okeechobee Watershed (L = levee, C = canal).

The Florida Ranchlands Environmental Services Project

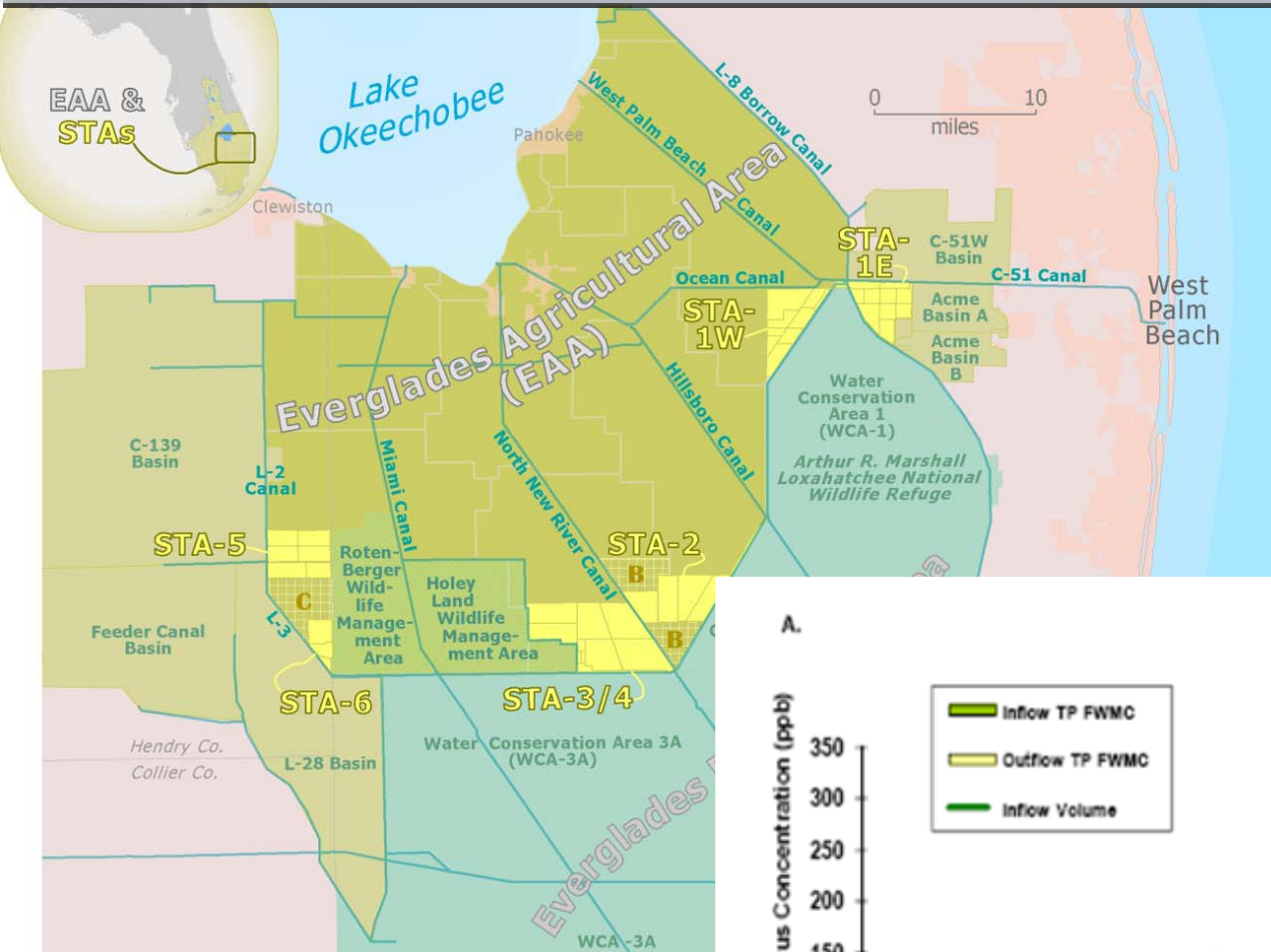
An Innovative Approach to Managing Water...Increasing Ranch Profitability...Enhancing Wildlife



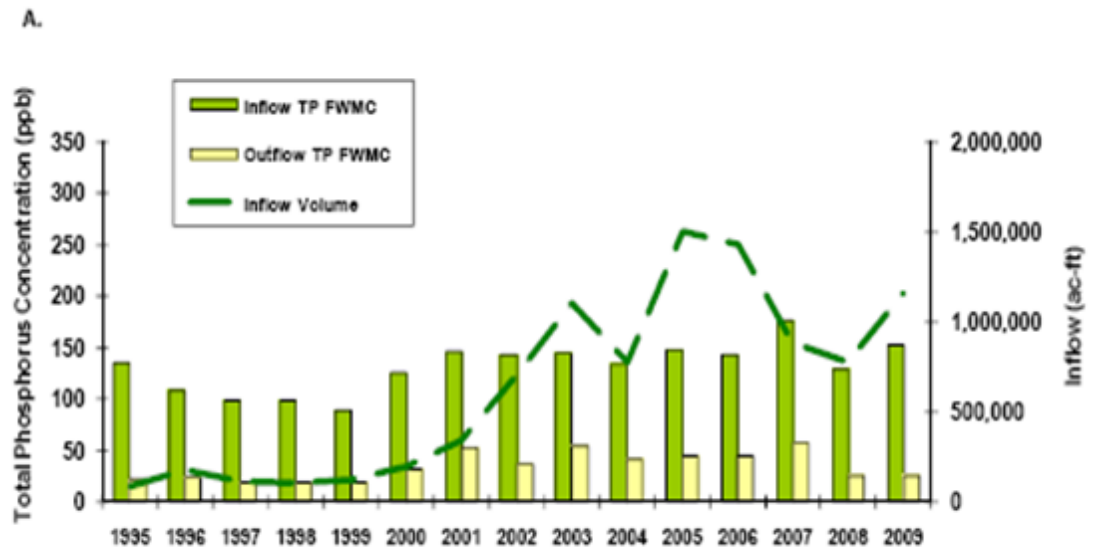
State agency-buyers pay rancher-sellers for providing documented water and phosphorus-retention services over a fixed-term contract.

- Competitive contract process.
- State agencies request proposals for providing desired services.
- Projects are selected based on the best opportunity for providing desired outcomes.

Accounting for Anthropogenic Land Uses

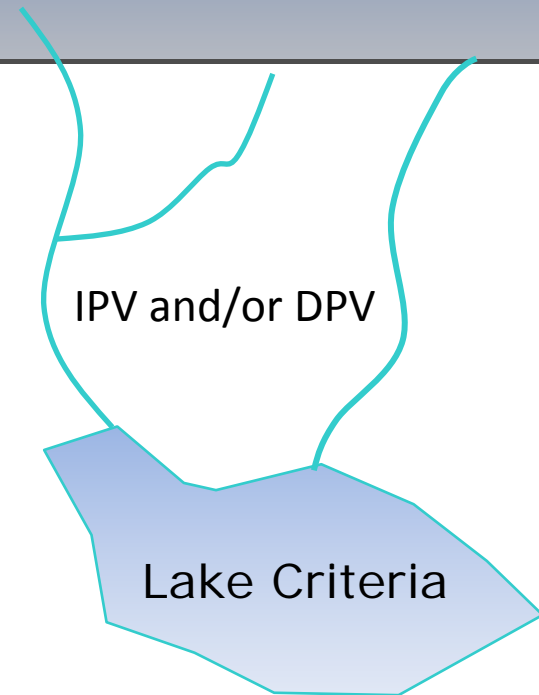


Source: 2010
South Florida
Environmental
Report (Draft)



Challenges

- Layered Numeric Nutrient Criteria
 - *Stream Criteria (IPV)*
 - *Lake Criteria*
 - *Stream Criteria (DPV)*



- Permitting Regional Treatment
 - *Industrial Wastewater?*



Figure 5-20. An aerial photo of STA-1E, Cell 4N, in May 2009, showing cell dryout, resulting in loss of submerged aquatic vegetation (SAV) (photo by the SFWMD).

- Limits of Technology

