

The background features a dark blue gradient with faint, light blue circular patterns and numbers. The numbers, including 140, 150, 160, 170, 180, 190, 200, 210, 220, 230, 240, 250, and 260, are arranged in a circular path, suggesting a scale or a circular diagram. There are also several circular arrows and dashed lines scattered throughout the background.

ENVIRONMENTAL JUSTICE WORK IN TEXAS

A challenging task fueled by individuals who believe in the power
of community involvement, collaboration,
creativity and determination

HOW WE GOT HERE...

- EJ Conference - Albuquerque, NM
- Introduced the idea for EJ State Plans
- EJ Workshops in each state
- Meetings with Texas EJ groups
- Developed draft plan
- Initiated work in key areas



TEXAS EJ COLLABORATIVE ACTION PLAN

Focus Area 1: Healthy Air, Water and Land

Focus Area 2: Superfund Sites

Focus Area 3: Permitting and Enforcement

Focus Area 4: Urban, Rural and Unincorporated Communities

Focus Area 5: Impacts from Ports and Port Expansions

Focus Area 6: Emergency Planning and Preparedness

HIGHLIGHTS

- Texas Lower Rio Grande Valley
- Houston Area
- Nueces County Colonias
- Dallas County - Sandbranch
- San Antonio Area



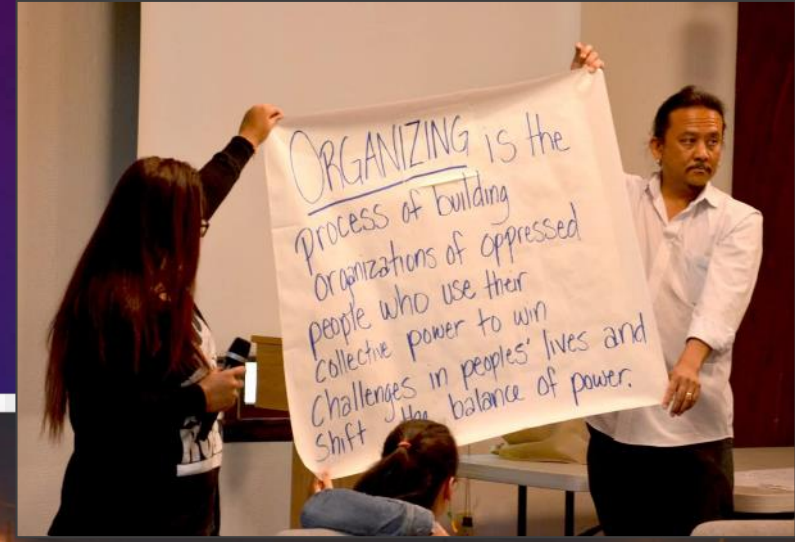
TEXAS LOWER RIO GRANDE VALLEY

- Malfunctioning Wastewater Lagoon
- Donna Canal Superfund Site
- Emergency Preparedness In Colonias



HOUSTON AREA

- Chemical Safety
- Emergency Preparedness
- Air Quality
- Citing



NUECES COUNTY COLONIAS

- Drinking Water and Wastewater
- Emergency Preparedness
- Flooding - Septic Tanks



SAN ANTONIO AREA

- Air Quality
- Water Security
- Kelly Air Force Base



CHALLENGES

- Distance
- Competing Priorities
- Resources
- Unincorporated Communities



WHERE DO WE GO FROM HERE?

Sept 2016	Add missing parts
Sept 2016	Align Texas EJ Plan to EPA's EJ 2020 Strategy
Sept 2016	Divide plan into regions
Oct 2016	Meet with TCEQ
Dec 2016	Begin to meet with potential regional partners
Dec 2016	Enlist regional champions
Ongoing	Continue to make progress
Ongoing	Communicate on a quarterly basis
Fall 2017	Host a Texas EJ Conference/Workshop

EJ 2020 - EPA'S ENVIRONMENTAL JUSTICE 2016 - 2020 STRATEGIC PLAN

Goal I: Deepen EJ Practice in EPA to improve health & environment of overburdened communities

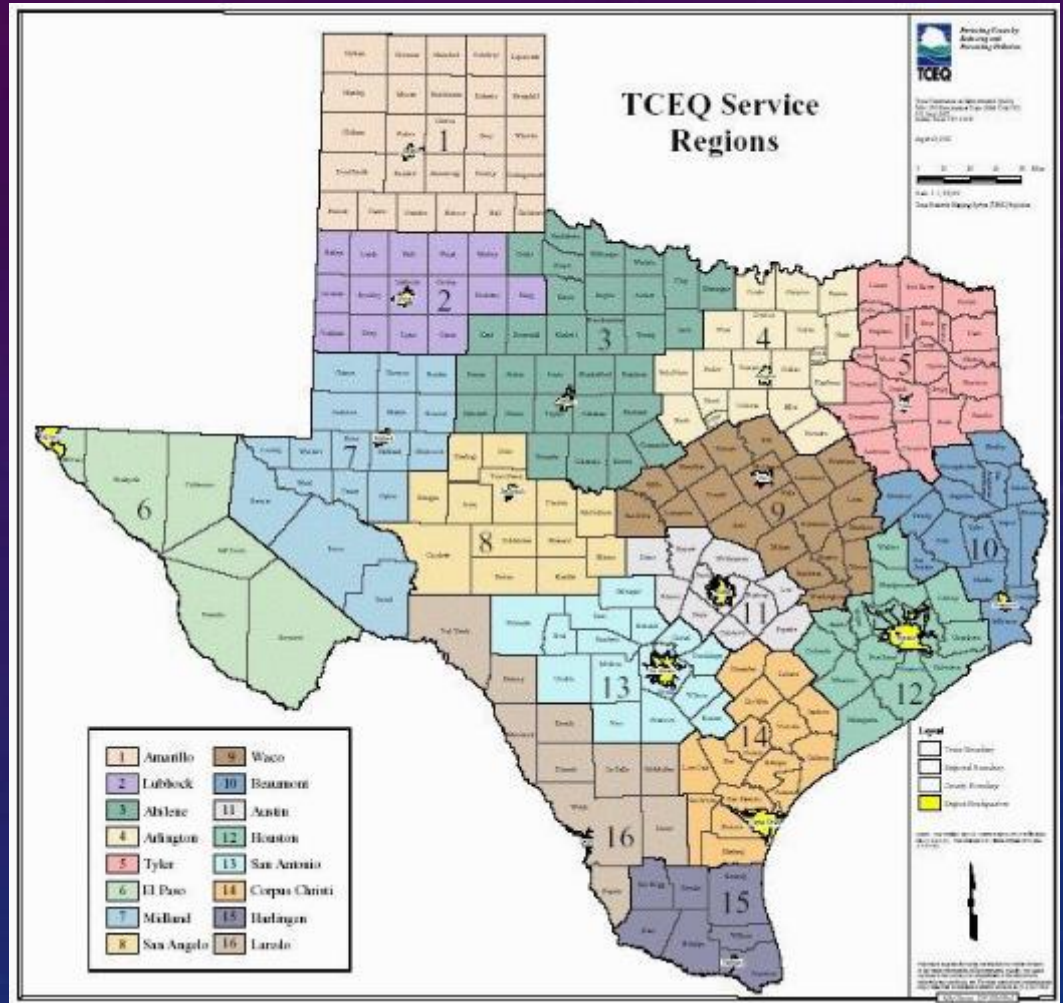
- Rulemaking
- Permitting
- Compliance & Enforcement
- Science

Goal II: Work with partners to expand our positive impact within overburdened communities

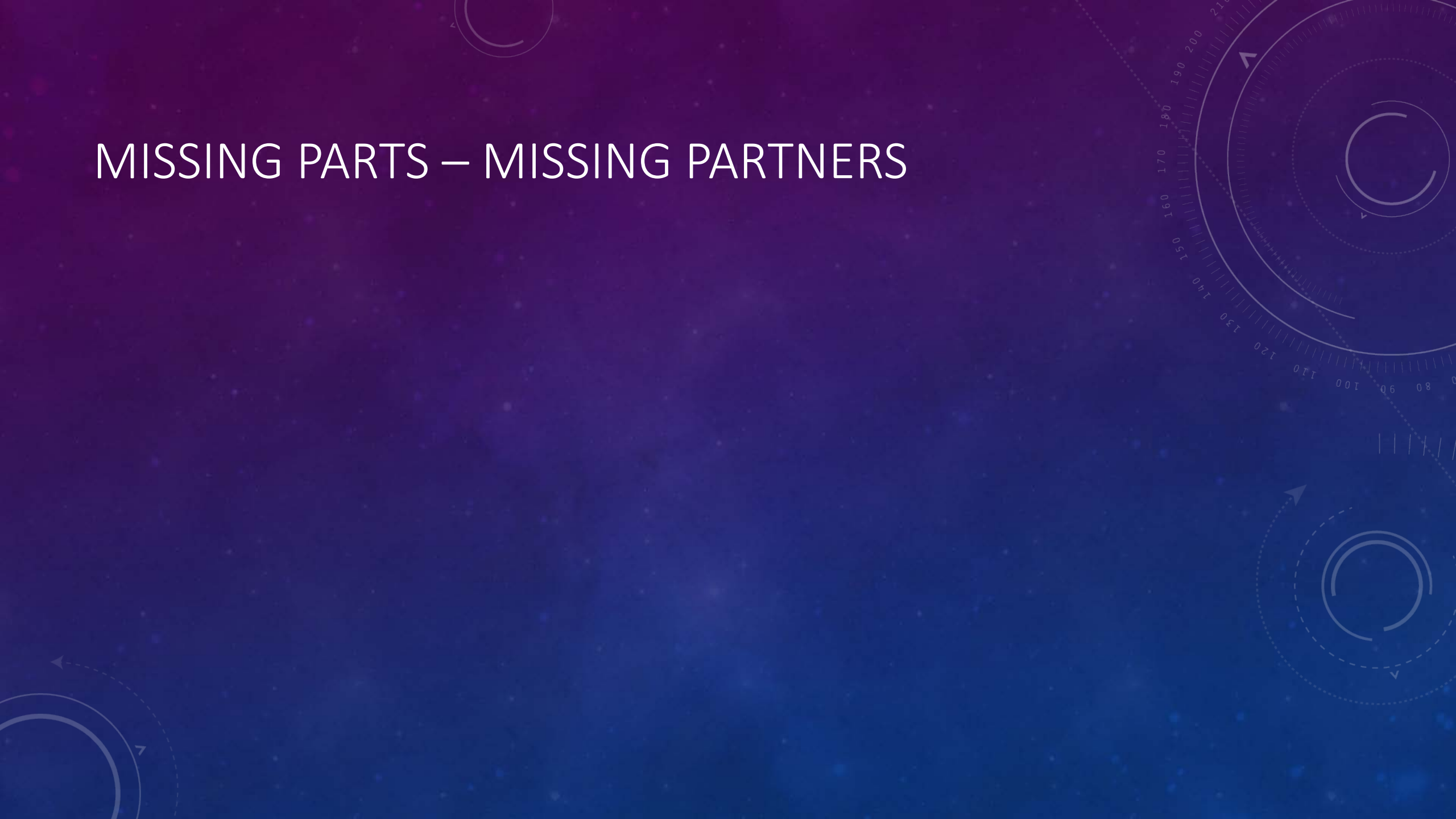
- States & Local Governments
- Federal Agencies
- Community-Based Work
- Tribes and Indigenous Peoples

Goal III: Demonstrate progress on significant national EJ challenges

- Lead Disparities
- Small & Tribal Drinking Water Systems
- Fine Particle Air Pollution
- Hazardous Waste Sites

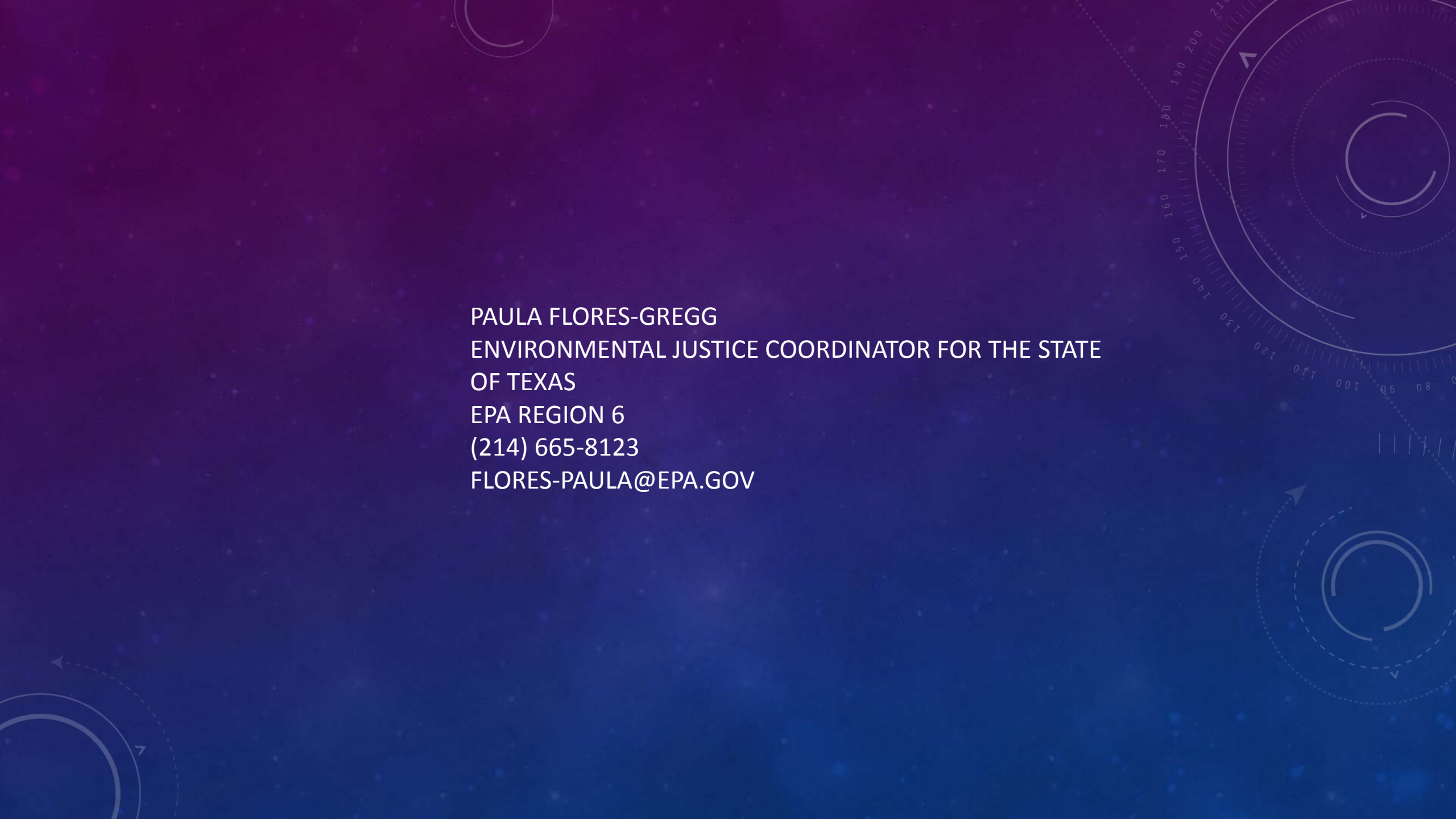


MISSING PARTS – MISSING PARTNERS





Our journey continues...



PAULA FLORES-GREGG
ENVIRONMENTAL JUSTICE COORDINATOR FOR THE STATE
OF TEXAS
EPA REGION 6
(214) 665-8123
FLORES-PAULA@EPA.GOV