

Alexandria-Pineville, Louisiana: “Working Collaboratively To Make A Visible Difference”

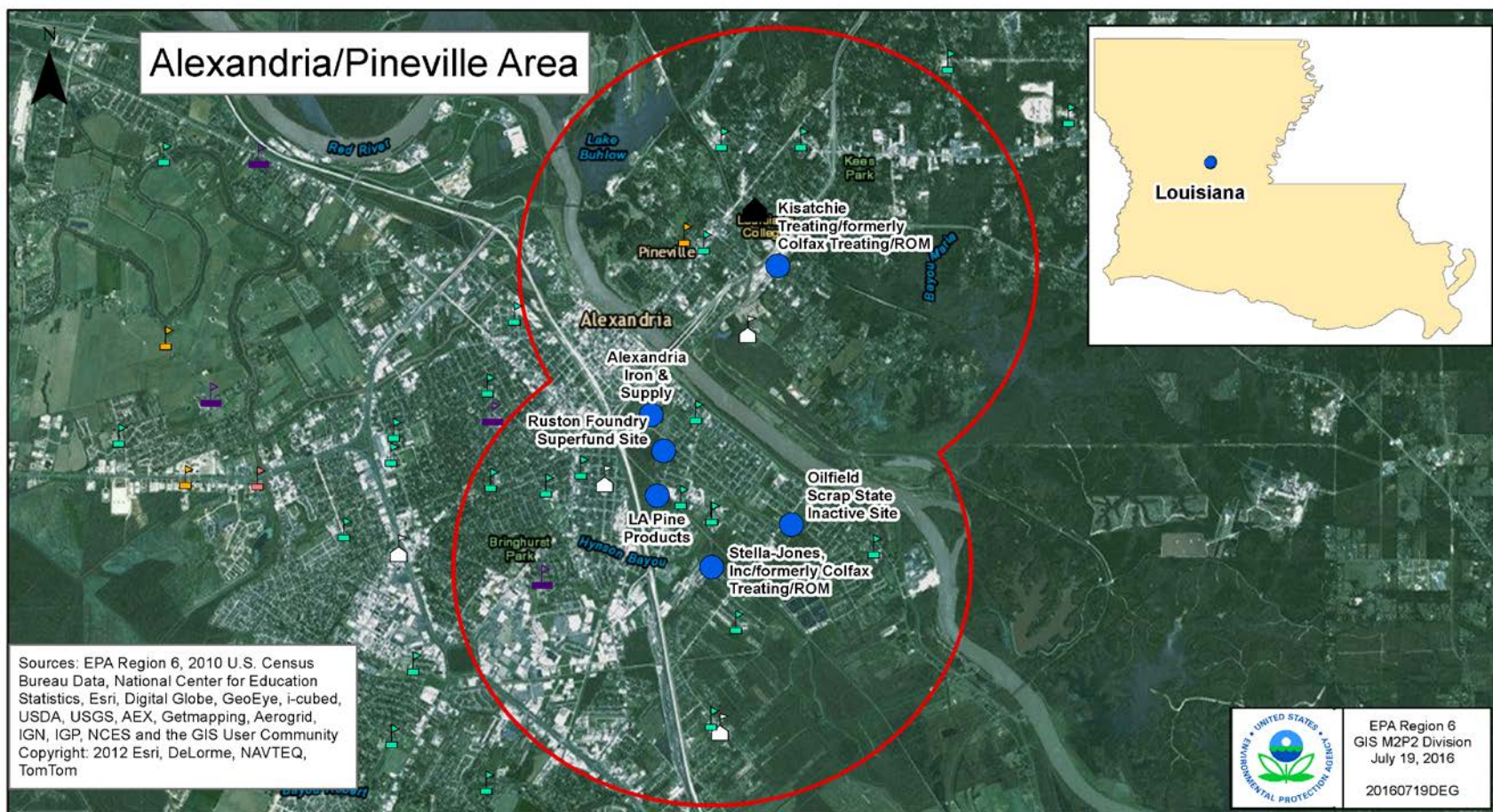
Environmental Justice Summit
August 10, 2016

EPA's Cross Agency Strategy

Working with
Focus
Communities

Learning to
Coordinate and
Leverage
Resources

Enhance our Work
in Communities



0 1.5 3 Miles

Legend

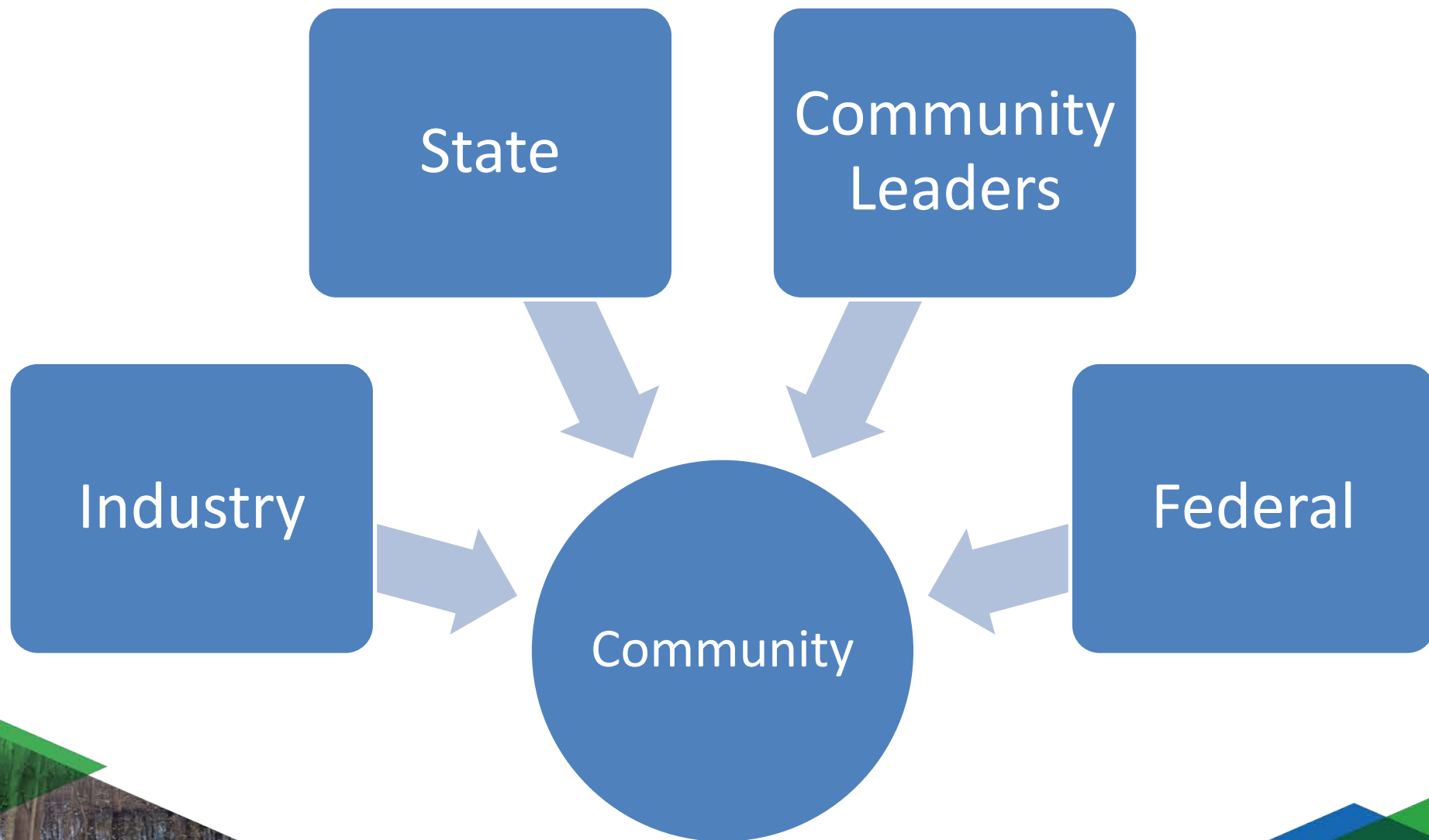
SchoolLevel

- Elementary (highest is 6th grade)
- Regular school
- Secondary (nothing younger than 7th grade)

- Special education school
- Combined (grades as low as K and as high as 6)
- Vocational school
- Alternative/other school
- Universities

2 Mile Buffer around Creosote Facilities

Making a Visible Difference



Listening to Community Concerns

Community Meetings

- 2014 - 2015

Webinars

- March – April, 2015

Scoping Sessions

- August 24, 2015
- February 1, 2016

Projects

Project Goals	Projects
Improve Health of Community – Outreach	Health Survey, Healthy Homes, Healthy Schools
Assess Environmental Conditions	Air Sampling, Groundwater Data Review, Sediment and Surface Sampling
Improve Communication	Community Sustainability Network, Community Sustainability Initiative

Improve Health of Community - Outreach

Health Survey

- Colleges/Underserved Communities Partnership Program (CUPP) began in Region 4 by Mike Burns and Deanne Grant
- LSU-Alexandria's Allied Health program
- Stations at local churches
- Diana Greiner and Joyce Stubblefield

Healthy Homes and Schools

- Focus on children's health
- Training provided by the Pediatric Environmental Health Specialty Units (PEHSU) and EPA staff
- Charlotte Runnels and Paula Seltzer

Assess Environmental Conditions

Air Sampling

- LDEQ's Mobile Air Monitoring Lab collected 2013 to 2015 near creosote facilities
- Louisiana Department of Health and Hospitals (LDHH)
- Lisa Schaub

Groundwater Data Review

- Ensuring contaminant plume is adequately defined
- Nancy Fagan, Ada – Steve Acree and ORD – Ed Barth



EPA Soil and Sediment Sampling

February 1 – 5, 2016



Community Sustainability Initiative



 **COOPERATIVE SUSTAINABILITY INITIATIVE
DECLARATION OF COMMITMENT** 

between the

United States Environmental Protection Agency Region 6
Louisiana Department of Environmental Quality
and
Colfax Treating LLC
for the
CenLa Community Sustainability Network (CSN)

This COOPERATIVE SUSTAINABILITY INITIATIVE ("CSI") is entered into by the U.S. Environmental Protection Agency, Region 6 ("EPA"), Louisiana Department of Environmental Quality (LDEQ), and Colfax Treating, LLC, (Colfax) as follows:

A. PURPOSE

Colfax voluntarily enters into this CSI in an effort to facilitate a sustainable community in the cities of Pineville and Alexandria, Louisiana. Colfax plans to define specific voluntary actions to achieve this purpose. This effort to facilitate a sustainable community involves conserving natural resources and biodiversity, improving resource efficiency, and enhancing community health and well-being for future generations.

B. GOAL

This CSI is a multifaceted, collaborative endeavor by Colfax Treating in conjunction with local businesses and state and local government, facilitated by EPA to achieve functional improvements to the Alexandria and Pineville community with initial goals achieved by the summer of 2017. This CSI is expected to serve as a foundation for long-standing local partnerships between all participating entities for the future of the Alexandria and Pineville communities.

C. AREAS OF COOPERATION AND COMMITMENT

Colfax voluntarily commits to:

- Pursue the delineation and proper remediation of affected areas in the Chattin Lake Canal tributary as part of the off-site cleanup under the LDEQ RCRA permit
- Continue the development of sustainable best management practices (BMPs), as applicable to remediation efforts
- Assist with other community engagement projects, including a *Community Sustainability Network*, to provide educational outreach to, and receive informational input from, the local community.

Community Sustainability Network (CSN)

- Bring together community stakeholders
- Encourage dialogue
- Build trust
- Leverage resources for stronger, lasting solutions
- Empower community





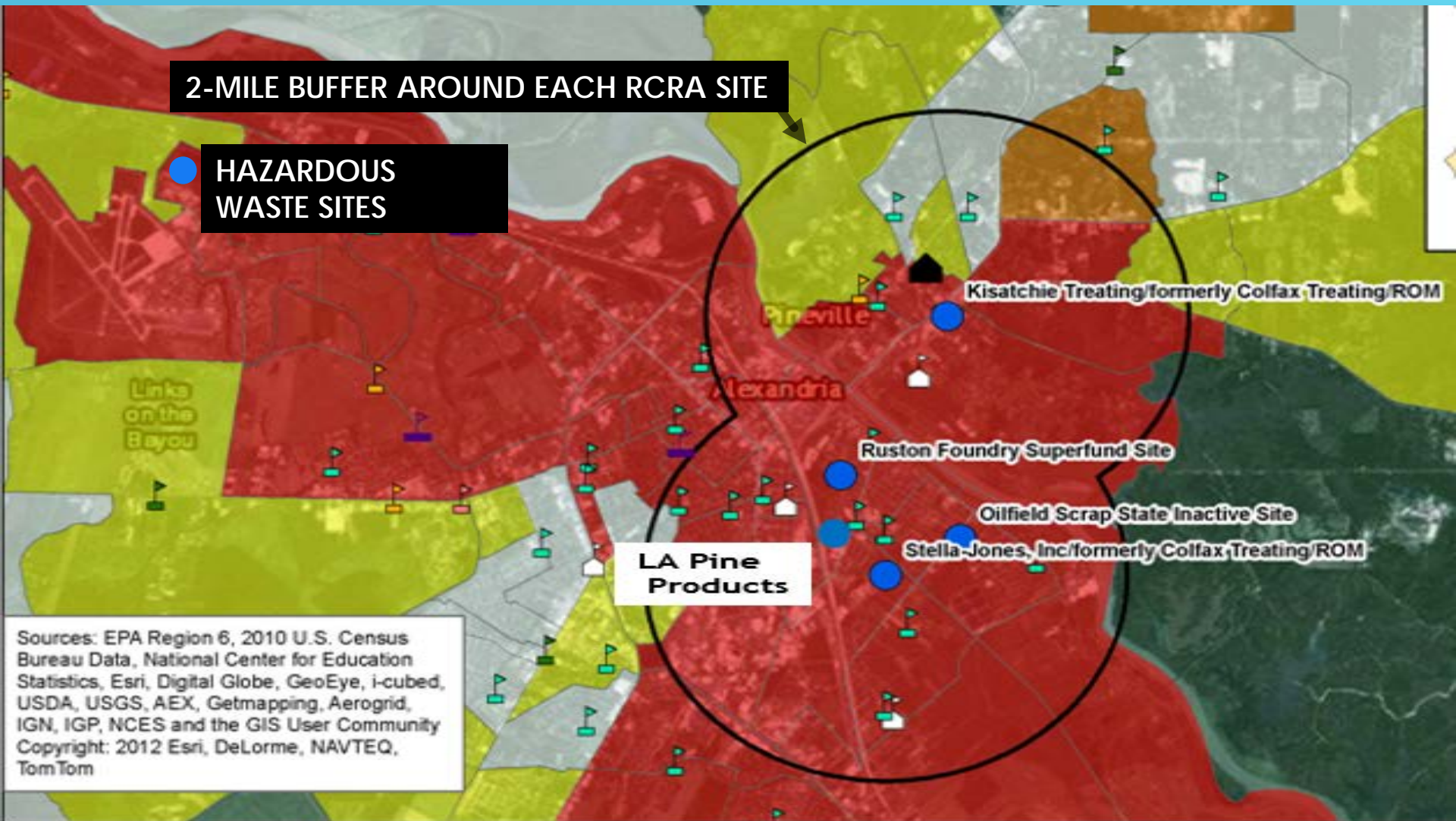
Alexandria/Pineville, LA Community Focus Project

Making a Visible Difference in the Community

**Ms. Agnes Francisco
Concerned Citizens of Alexandria, LA**

2-MILE BUFFER AROUND EACH RCRA SITE

HAZARDOUS
WASTE SITES



Sources: EPA Region 6, 2010 U.S. Census Bureau Data, National Center for Education Statistics, Esri, Digital Globe, GeoEye, i-cubed, USDA, USGS, AEX, Getmapping, Aerogrid, IGN, IGP, NCES and the GIS User Community
Copyright: 2012 Esri, DeLorme, NAVTEQ, TomTom



COMMUNITY ACTIONS

- ☐ **Identified Multiple Environmental Impacts**
- ☐ **Identified Environmental and Health Concerns**
- ☐ **Identified Cancer Related Deaths in Community**
- ☐ **Sponsored Community Meetings**
- ☐ **Engaged environmental advocates**



DEATHS IN NEIGHBORHOODS

A record total of 113 deaths occurred in a 9-month period in my neighborhood from 1-1-2013 to 9-10-2013.



**TREATED TIMBERS STORED NEXT TO
NEIGHBORHOOD DRAINAGE DITCH AT
ACTIVE RCRA CREOSOTING FACILITY**

- Sediment samples taken by LDEQ personnel and analyzed by the EPA Houston laboratory revealed levels of polycyclic aromatic hydrocarbons (pahs) above residential screening standards.







CREOSOTE CONTAMINATION

Report: Furon Blood Lipid and Attic Dust in
Populations Living Near Four Wood Treatment
Facilities in the United States

EPA Region 6 Environmental Justice Summit

Overview and Perspective

Making a Visible Difference Community Focus Project

Alexandria-Pineville, Louisiana

Working Collaboratively to Make a Visible Difference

Presentation by: Wilma Subra

August 10, 2016

Crowne Plaza Hotel

Dallas, TX



Louisiana Environmental Action Network

Helping to make louisiana safe for future generations.

www.leanweb.org

subracom@aol.com

Overview and Perspective

Making a Visible Difference Community Focus Project

Alexandria-Pineville, LA

**Located in the heart of Central Louisiana on either side of the Red River –
Known as CENLA**

Population	Alexandria	Pineville
Total	47,723	14,555
African American	57%	30%
Hispanic	1%	2%
Asian	1%	2%
Native American	1%	

Total Alexandria-Pineville EJ Population 55%

Primary Sources of Pollution that Cause Odor Events
and
Negatively Impact the Health of the EJ Community Members

Alexandria

Wood treating facilities (since 1926), Federal and State Suprefund sites

Pineville

Wood Treating facility (since 1948)

Wood Treating Chemicals

The wood treating facilities currently and historically use creosote, pentachlorophenol (PCP) , and chromate copper arsenate(CCA) to treat railroad crossties, telephone poles and piling.

The chemicals released from the wood treating facilities and contaminate the air, surface and ground water, soil and sediment consist of:

- creosote
- phenol
- pentachlorophenol
- polycyclic aromatic hydrocarbons
- arsenic
- chromium
- copper
- lead
- dioxins

Dioxins in Human Bodies and Environment of the EJ Communities Alexandria and Pineville

The Dioxin impurities in the Pentachlorophenol used to treat the wood products have resulted in Dioxin bioaccumulating in the blood of individuals living within a 2 mile radius of the wood treating facilities.

Blood Dioxin

Alexandria	3.6 times the national average
Pineville	7.8 times the national average

Attic Dust Dioxin

Alexandria	155 times EPA Dioxin Soil Standard
Pineville	174 times EPA Dioxin Soil Standard

The largest Dioxin congener present in the blood and attic dust consist of 2,3,7,8-TCDD, the most toxic of the Dioxin congeners.

EPA Actions in Response to Community Concerns and Request Associated with Community Negative Impacts

Air Sampling

As a result of citizen odor complaints, EPA and LA DEQ performed a number of air sampling events around the wood treating facilities. Polynuclear Aromatic Hydrocarbons (PAHs) were detected in the air samples from the wood treating facilities in Alexandria and Pineville.

Alexandria PAHs exceeded the Toxic Equivalent Quotient Risk by 7.9 times

Pineville PAHs exceeded the Toxic Equivalent Quotient Risk by 11.7 times

Surface Soil and Sediment Sampling for Chemicals of Concern

Community members expressed concerns of contaminated soils and sediments in recreational and school areas in close proximity to the wood treating facilities and the superfund sites.

EPA conducted surface soil and sediment sampling at Hunter Park and Chatlin Lake Canal in Alexandria and Slocum School and Pineville Soccer Park in Pineville.

Creosote benzo(a)pyrene contaminated soil in Hunter Park and contaminated sediment in Chatlin Lake Canal were identified. EPA is working with the responsible parties to address remediation of the contamination.

Slocum School soil was identified as being contaminated with benzo(a) pyrene and PAHs. Additional testing was required, the children playing in the contaminated areas should wash their hands after returning inside the school and grass cover should be maintained.

- Evaluate Ground Water Contamination to Insure Adequately Defined Ground Water Plumes
- Health Survey Being Performed by LSU Alexandria
- Community Sustainable Initiative and Network – interaction between community stakeholders and industry

Hopeful Outcomes - Community Focus Project

EPA has extensively engaged the impacted communities as well as a host of community partners, state, parish and local environmental, health, regulatory, government agencies and industries operating in the area in order to address the concerns and issues identified by the Environmental Justice communities of Alexandria and Pineville.

Working together, the Environmental Justice communities in Alexandria and Pineville should see a great improvement in their health as well as their quality of life.

Guest Speakers

- ❑ Diana Greiner, EPA Region 6
- ❑ Agnes Francisco, Concerned Citizens of Alexandria, LA
- ❑ Wilma Subra, Louisiana Environmental Action Network
- ❑ Matt Johns, Rapides Area Planning Commission
- ❑ Jeff Hall, Louisiana House of Representatives – District 26