

Great Lakes Restoration Initiative 2016 RFA
Supplementary Material for RFA Category I.G. Agricultural Incentive Program
Effectiveness

Figure 1. GLRI Priority Watersheds.

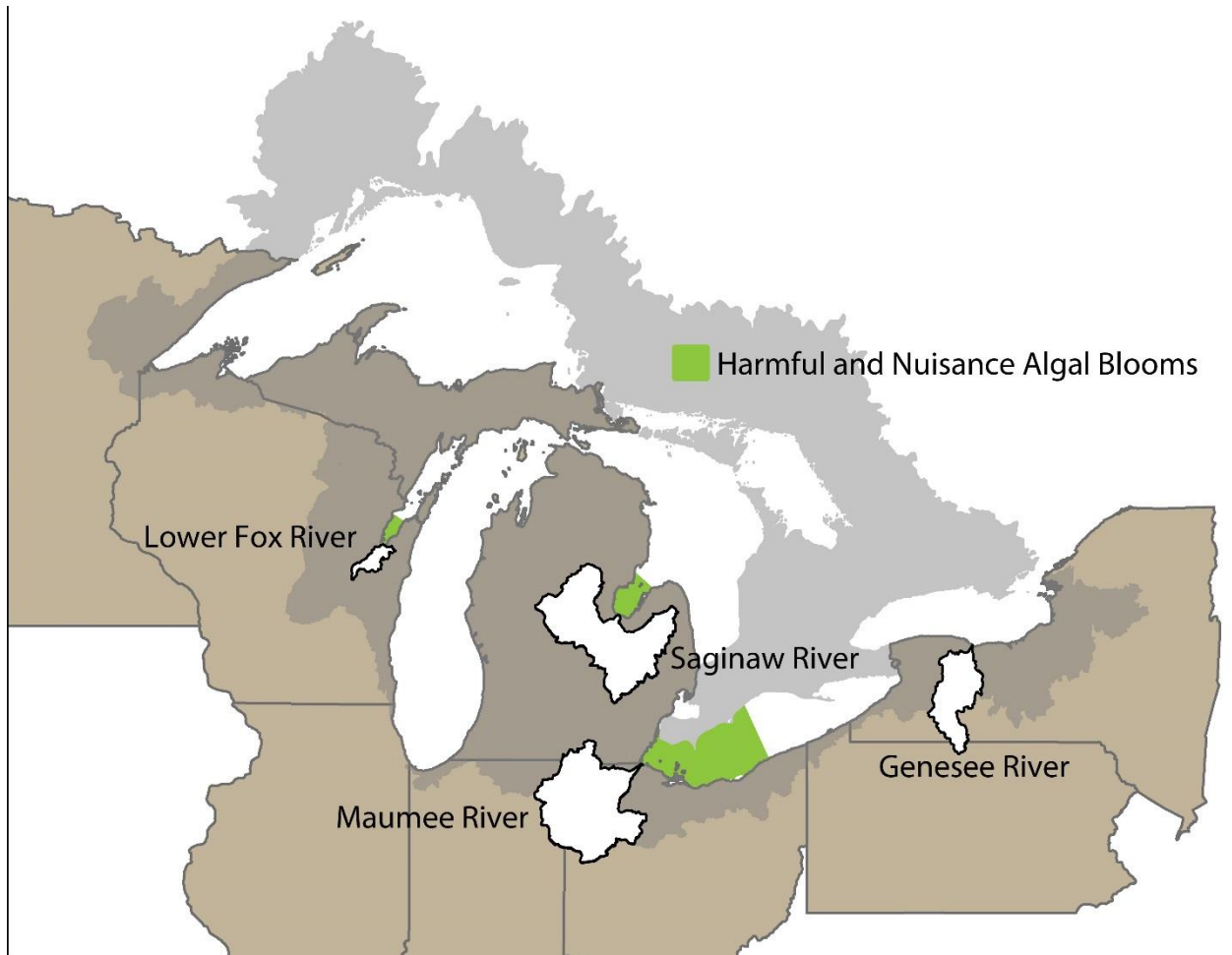


Figure 2. Five GLRI Phosphorus Priority Areas jointly recognized by USDA-NRCS, EPA-Great Lakes National Program Office, U.S. Geological Survey, and NOAA – National Weather Service and nested within larger GLRI Priority Watersheds depicted in Figure 1. Phosphorus Priority Areas are represented by five green shaded areas. Additional detailed maps are located below for each area.

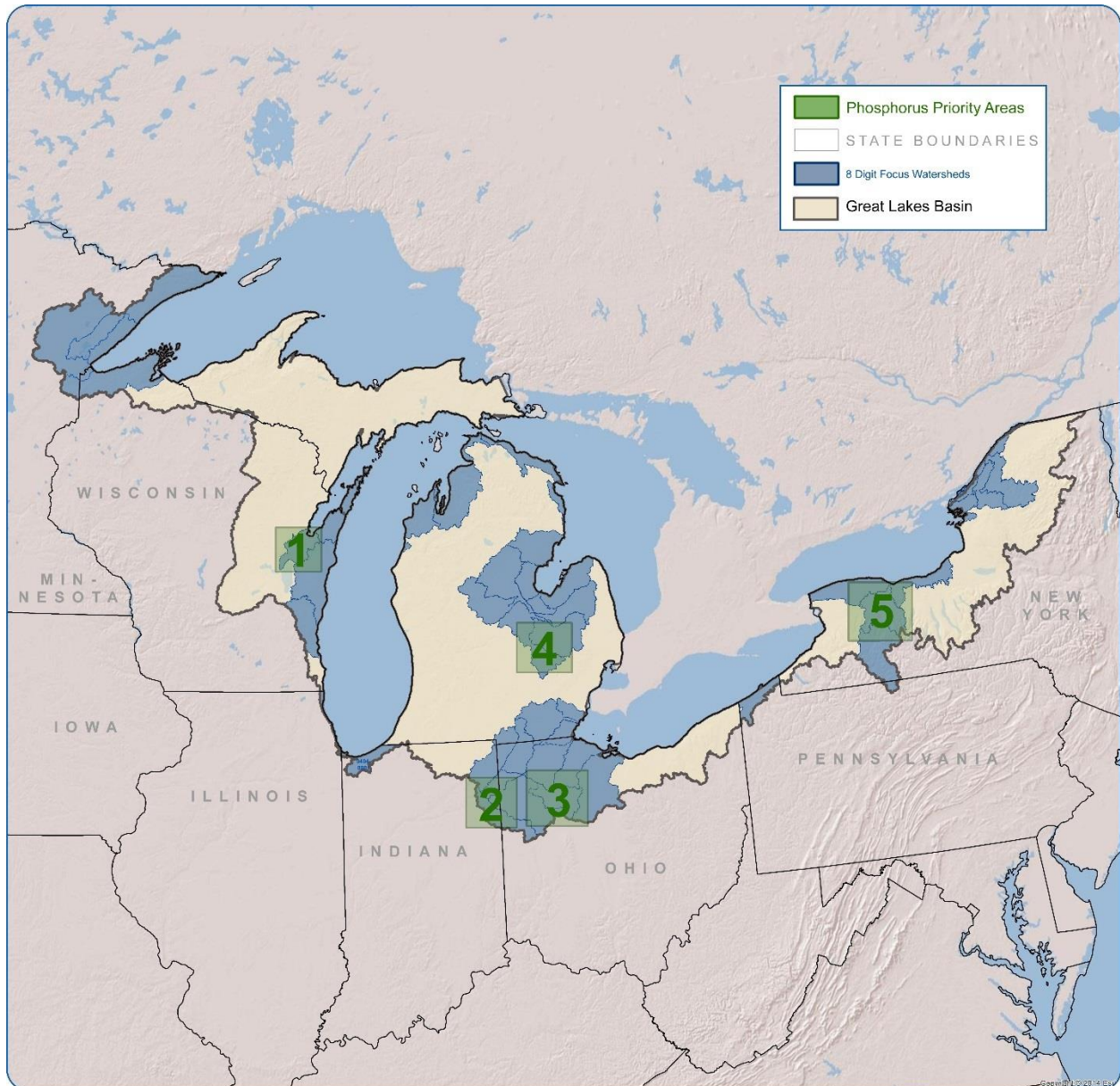


Figure 3. Detailed Map of Lower Fox River HUC12 units recognized as GLRI Phosphorus Priority Area #1.

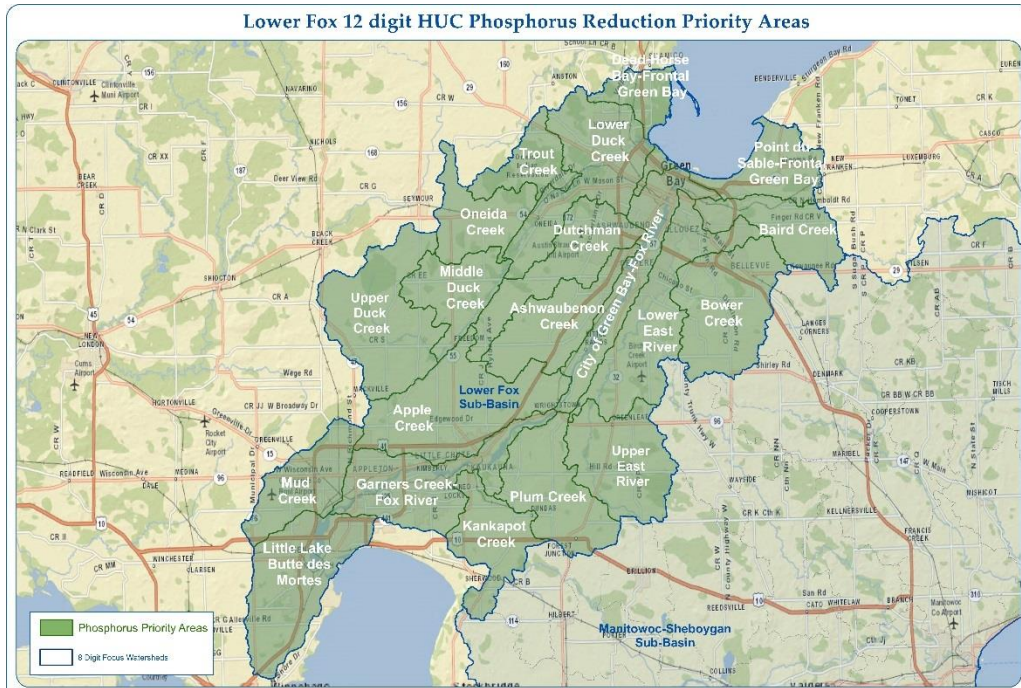


Figure 4. Detailed Map of Upper Maumee HUC12 units recognized as GLRI Phosphorus Priority Area #2.

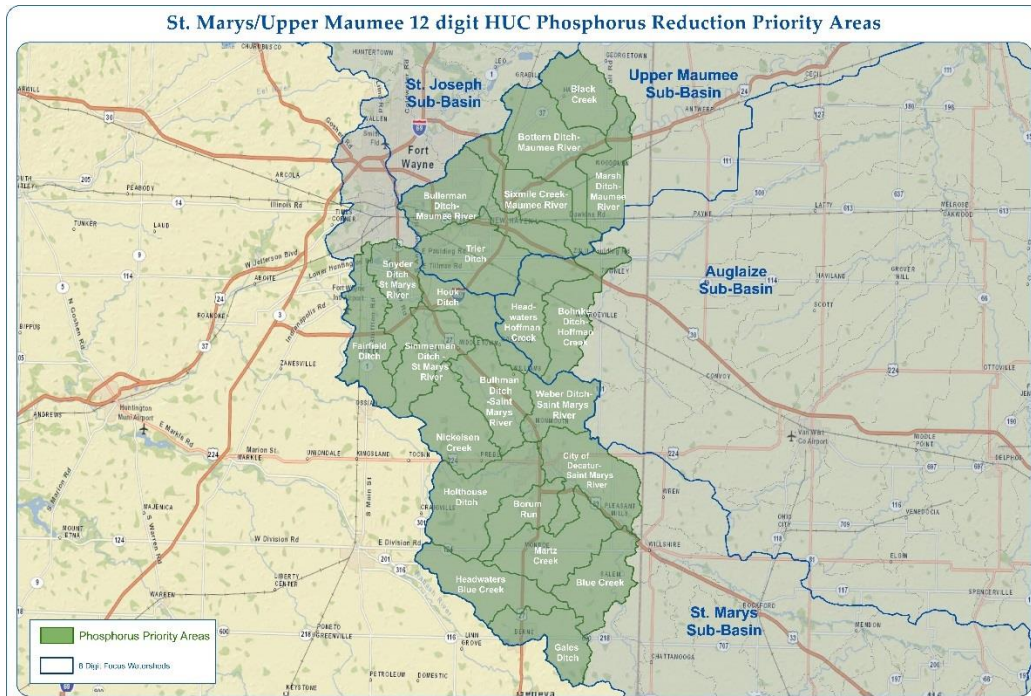


Figure 5. Detailed Map of Blanchard River HUC12 units recognized as GLRI Priority Area #3.

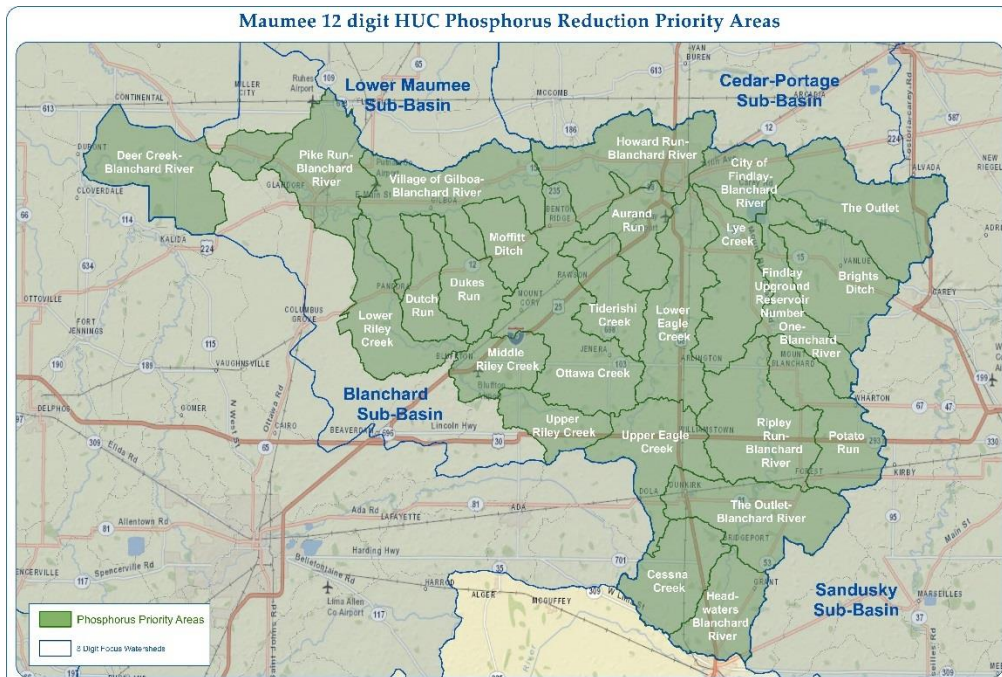


Figure 6. Detailed Map of Saginaw River HUC12 units recognized as GLRI Phosphorus Priority Area #4.

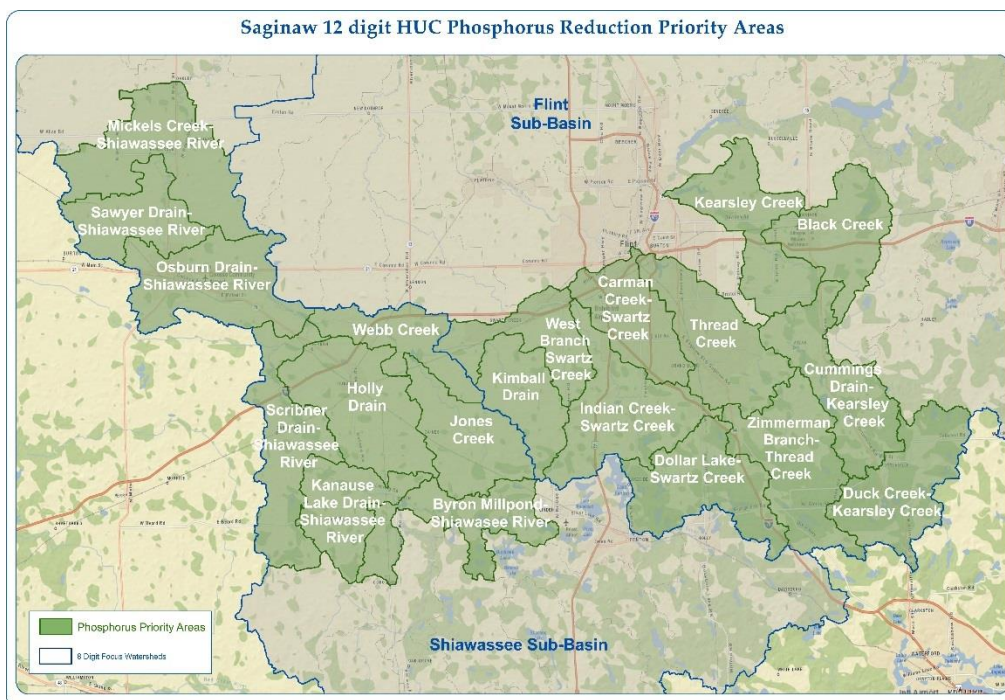


Figure 7. Detailed Map of Genesee River HUC12 units recognized as GLRI Phosphorus Priority Area #5.

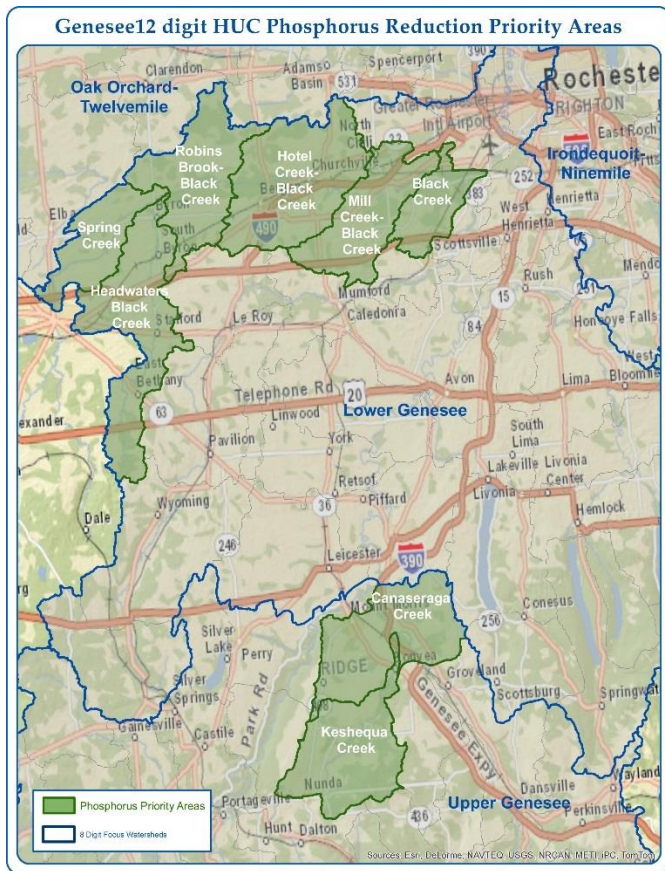


Table 1. Approximate location of one or multiple USGS instream and edge-of-field monitoring locations used to monitor water quality changes due to GLRI nutrient reduction activities

HUC 12	Subwatershed
040302040301	Upper East River
040802040304	Swartz Creek
041000050104	Upper Maumee
041000080301	Upper Blanchard River
041000080302	Upper Blanchard River
041300020910	Canaseraga

Selected Entities Utilizing GLRI Funds for Nutrient Reduction, Education, and/or Planning Activities in GLRI Phosphorus Priority Watersheds

Lower Fox Priority Watershed

- USDA-Natural Resources Conservation Service
- Brown County Land and Water Conservation Department
- Outagamie County Land Conservation Department
- Fox-Wolf Watershed Alliance
- Great Lakes Commission
- The Nature Conservancy

Maumee Priority Watershed

- USDA-Natural Resources Conservation Service
- Allen County Soil and Water Conservation Department
- Indiana Department of Agriculture
- Purdue University
- USDA-Natural Resources Conservation Service
- Ohio Environmental Protection Agency
- Ohio Department of Natural Resources
- Blanchard River Watershed Partnership
- The Nature Conservancy
- Hancock County Soil and Water Conservation Department
- Ohio Farm Bureau

Saginaw River Priority Watershed

- USDA-Natural Resources Conservation Service
- Michigan Department of Agriculture and Rural Development
- Genesee County Soil and Water Conservation District
- Shiawassee County Soil and Water Conservation District
- Michigan State University
- The Nature Conservancy

Genesee River Priority Watershed

- USDA-Natural Resources Conservation Service