



Your platform for sustainability

Building Partnerships to Support Sustainable Manufacturing: Lessons from Louisiana's Chemical Corridor

Elizabeth Shephard, CEO
LifeCity, LLC







AGENDA

- About the Louisiana Chemical Corridor
- Value Louisiana: Connecting Industry & Impact
- Lessons for your Community

Take home message:
wherever possible, build a bridge

OUR BUSINESS PROGRAM: Measure, Motivate, Market



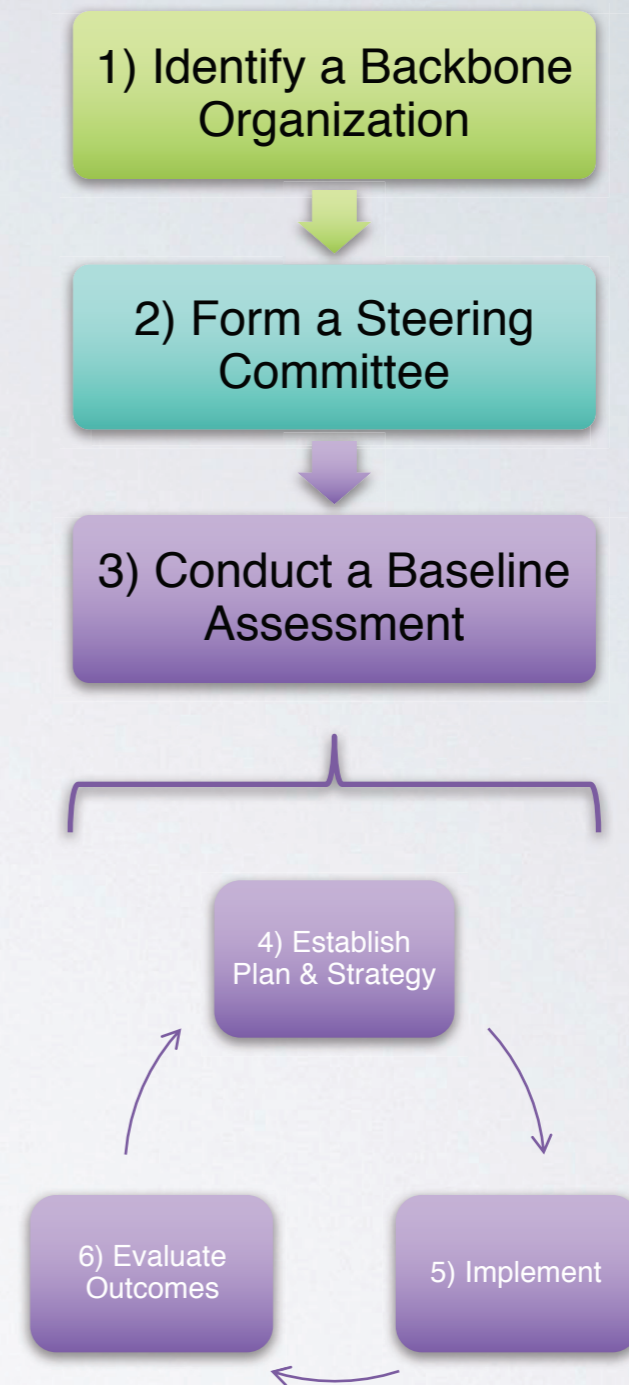
Sheraton
New Orleans
HOTEL





OUR MODEL

- Goal: grow for-benefit organizations
- Backbone organization is membership based
- Steering committee is made up of backbone organizations under impact areas (water, workforce, etc.)
- Plan is developed for both the ecosystem and organizational level

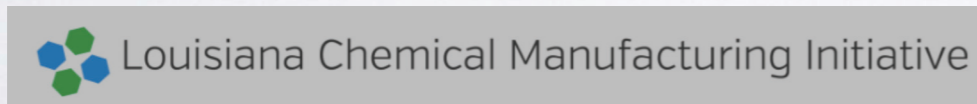


Industry Level

How do we prioritize solutions for industries that have the potential to create the greatest social, environmental, and economic returns? Which industries have established backbone organizations, metrics, or goals that could be aligned?



**GREATER
NEW ORLEANS
WATER
COLLABORATIVE**
nolawater.org



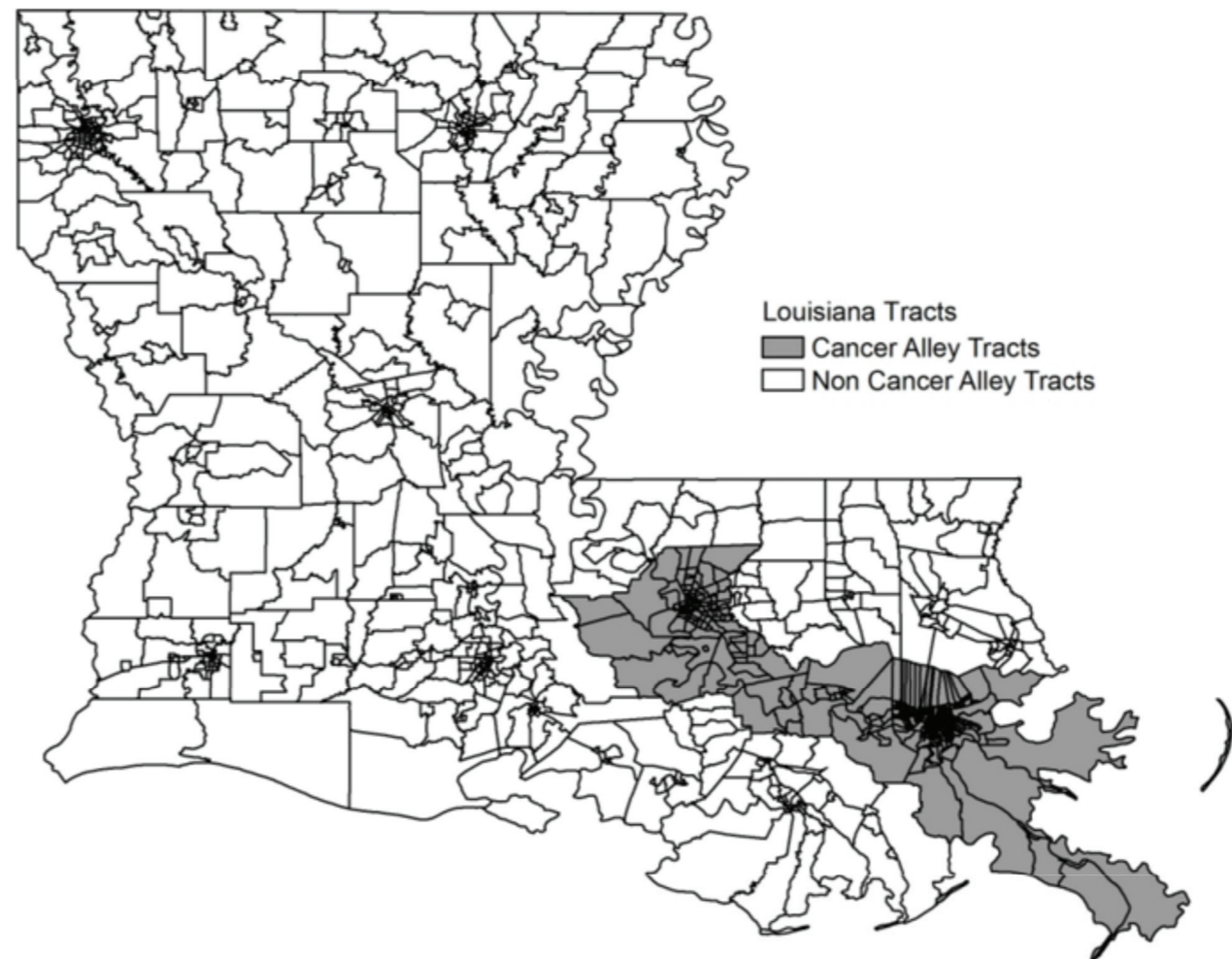
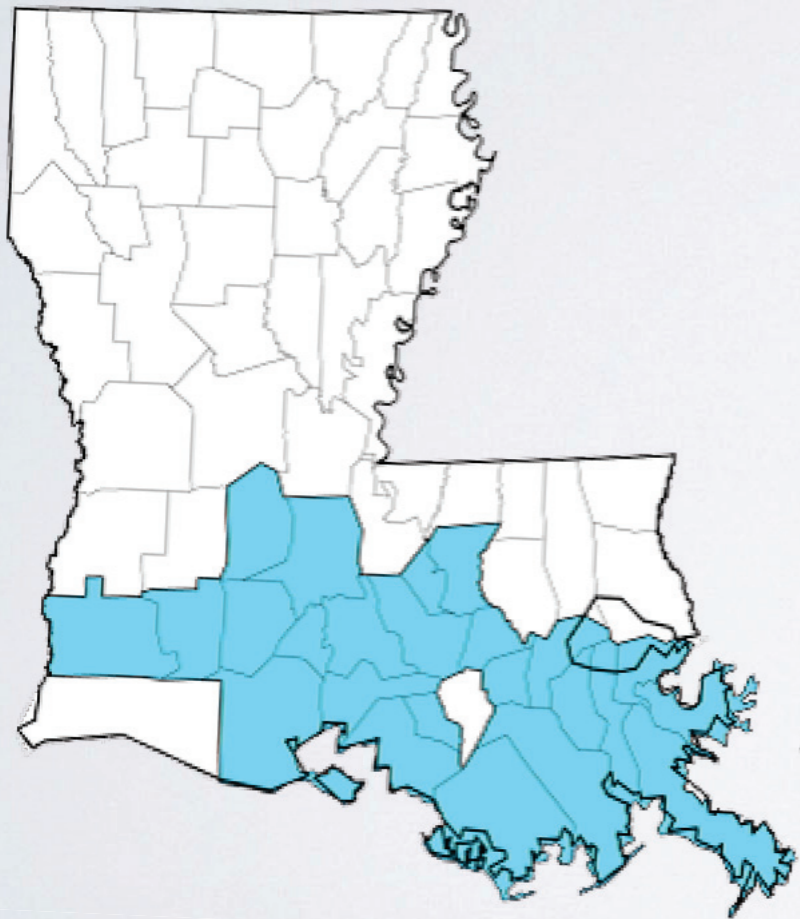
Organization Level

How do we help organizations grow while improving their social and environmental impact on our community?



LOUISIANA CONTEXT

- # 3 in the country for toxic releases per square mile
- # 3 in the country for chemical manufacturing (GSDP)



Notes: The Cancer Alley consists of 11 parishes: East Baton Rouge, West Baton Rouge, Ascension, Iberville, St. James, St. John the Baptist, St. Charles, Jefferson, Orleans, St. Bernard, and Plaquemines.

CONNECTING INDUSTRY & IMPACT



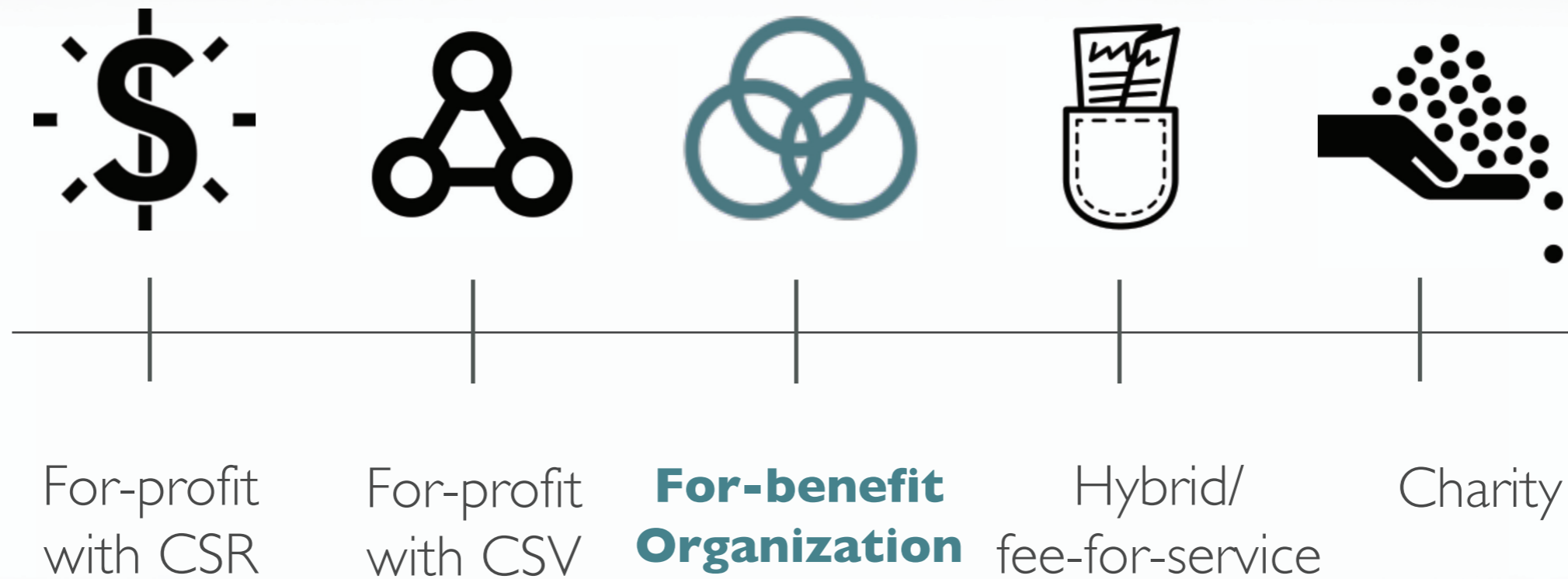
Place-based Initiatives:

- IMCP
- E3
- Sustainable Communities
- HUD Promise Zones



Where do you fall along the spectrum of impact integration?

Economic



Social



Tip # 1: Build strong relationships



The people of Grand Bois say their symptoms began almost immediately that day in March 1994 when eight tractor trailers loaded with oil field sludge rumbled past their tiny Acadian community and into an adjacent waste disposal site.

"When the trucks took the curve, the smell just took over the community," said Clarice M. Friloux, a 32-year-old mother of two. "The kids were getting off the school bus with their shirts over their faces. They stayed sick with

Ike rekindles oil waste fight

By Robert ZulloSenior Staff Writer

GRAND BOIS When the floods come to this tiny American Indian community, which straddles both sides of the Bourg-Larose Highway in a wooded no-mans land between Terrebonne and Lafourche parishes, the people distinguish between two types of water.

Wednesday

Posted Oct 1, 2008 at 3:00 PM

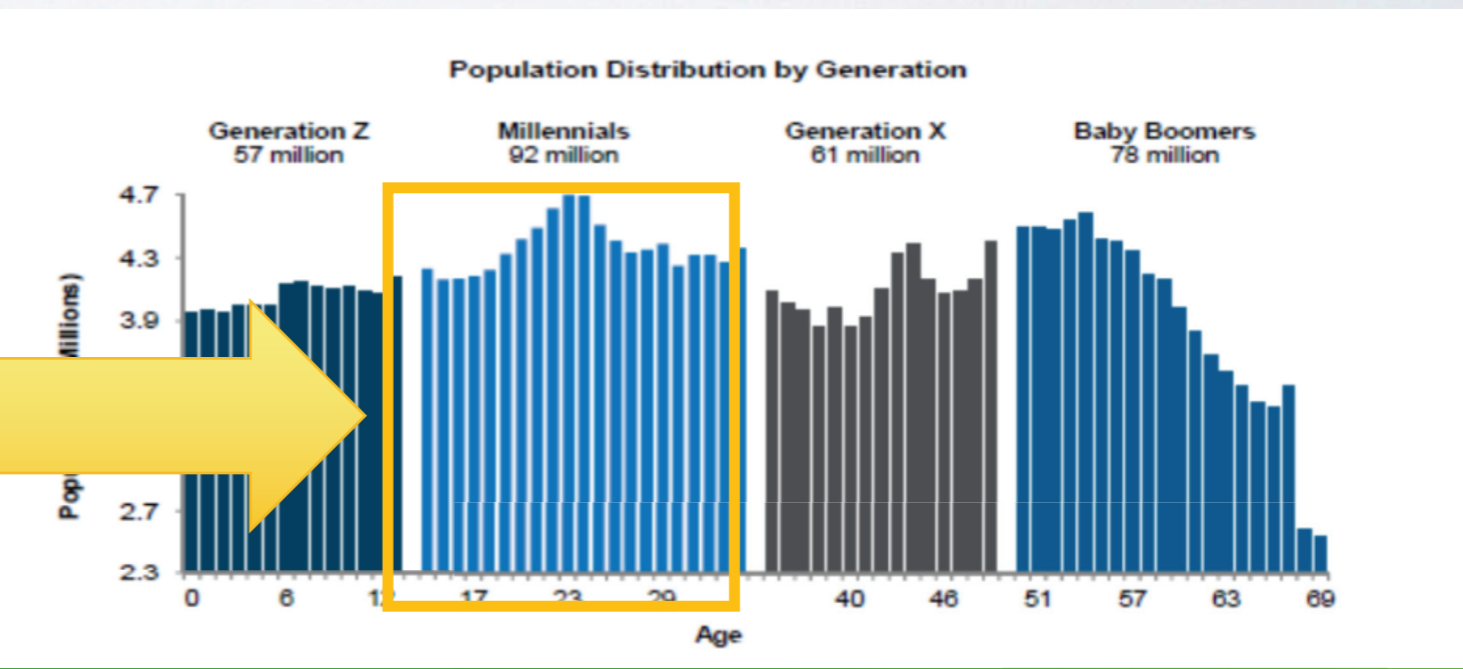
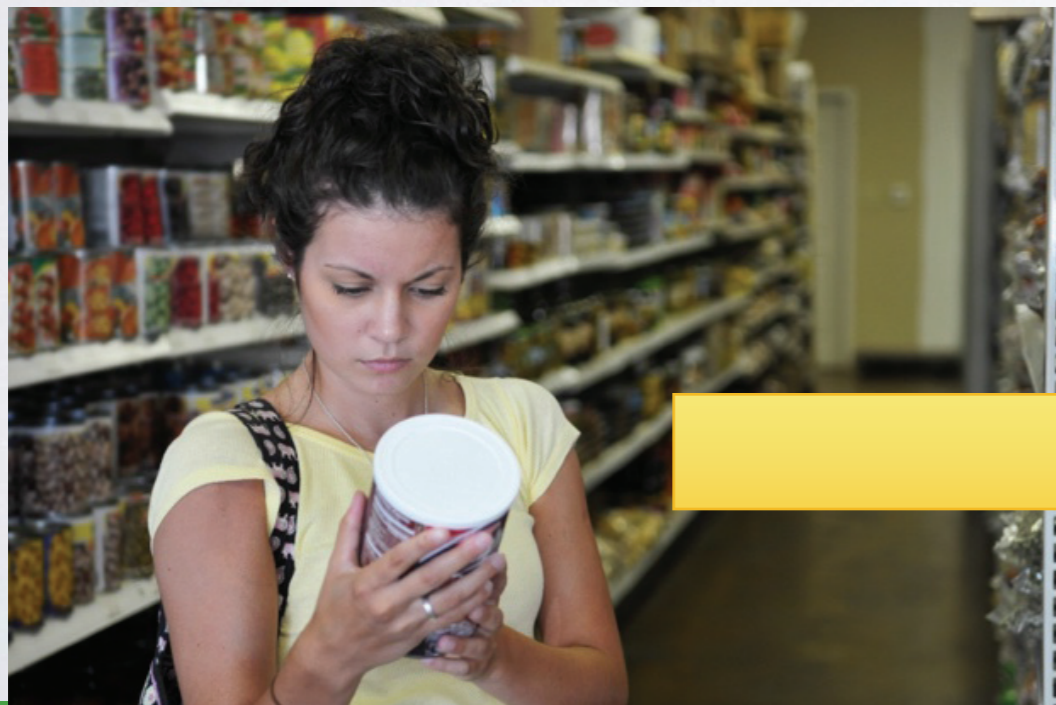
Share



Tip #2: Connect impact to profit

Top drivers of sustainable business practices:

- ✓ **COST MANAGEMENT** (67%)
- ✓ **CONSUMER DEMAND** (64%)
- ✓ **'IT'S THE RIGHT THING TO DO'** (62%)



Tip #3: Create social networks and incentives



The French Quarter
New Orleans, LA

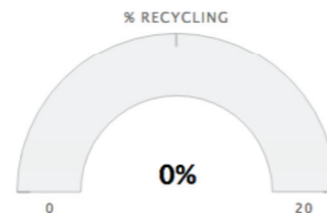
List my business

★ 2016 Goals

20% Recycling Rate



Percentage of businesses recycling in The French Quarter



10 Training Hours



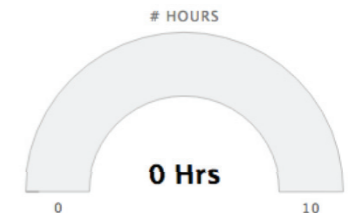
Number of training hours conducted for employees



10 Volunteer Hours



Total volunteer hours provided by The French Quarter business employees



Tip #3: Use Smart Technology

- P2: Zero Waste Network Database
- DOE: ISO5001 Ready, Industrial Assessment Center Database
- Other EPA tools

ZERO WASTE NETWORK
CENTER FOR ENVIRONMENTAL EXCELLENCE

Home | Join Us | Exchange Materials | Success Stories | P2 Planning | P2 Options | Topic Hubs | Workshops | Contact

Join Us on:
f t in

P2 & Lean Workshops

[Houston \(one day\) October 5, 2016](#)
[Houston](#)

Case Study Database

[Add Story](#) | [Search Case Studies](#)

Welcome to the National P2Rx Success Story Database

Welcome to the Zero Waste Network success story database. We currently have **538** success stories. Each case study is an example of how a real facility saved money, reduced waste, and/or lowered their regulatory burden through an innovative P2 practice. The studies are often written in a company's own words, with minimal editing. For more information on success story procedures see: [success story SOP's document](#).

SHEP
SAFETY, HEALTH & ENVIRONMENTAL PROFESSIONAL

Safety Health and

Sponsored by the:
U.S. DEPARTMENT OF **ENERGY** | Energy Efficiency & Renewable Energy
ADVANCED MANUFACTURING OFFICE

Industrial Assessment Centers

IAC Database

A collection of all the publicly available assessment and recommendation data is available online in the Industrial Assessment Centers (IAC) Database. This includes information on the type of facility assessed (size, industry, energy usage, etc.) and details of resulting recommendations (type, energy & dollars savings etc.).

As of 10-19-2016, the IAC database contains:

- 17,580 Assessments**
- 133,388 Recommendations**

The Database can be searched by:

- **Assessments:** Industry Type, Size, Year, Energy Costs, Products
- **Recommendations:** Type, Savings, Cost, Implemented
- **Industry Type:** SIC and NAICS

INDUSTRIAL CLASSIFICATION INDEX (NAICS)

NAICS Code	Industry Name
20	Manufacturing
21	Mining, Quarrying, and Oil and Gas Extraction
22	Electric, Electronic, and Optical Equipment, Apparatus, and Instruments
23	Construction
24	Real Estate and Rental and Leasing
25	Retail Trade
26	Wholesale Trade
27	Transportation and Warehousing
28	Information
29	Arts, Entertainment, and Recreation
30	Accommodation and Food Services
31	Health Care and Social Assistance
32	Educational Services
33	Health and Medical Equipment
34	Professional, Scientific, and Technical Services
35	Administrative and Support and Waste Management and Remediation Services
36	Management of Companies and Enterprises
37	Administrative and Support and Waste Management and Remediation Services
38	Management of Companies and Enterprises
39	Management of Companies and Enterprises
40	Management of Companies and Enterprises
41	Management of Companies and Enterprises
42	Management of Companies and Enterprises
43	Management of Companies and Enterprises
44	Management of Companies and Enterprises
45	Management of Companies and Enterprises
46	Management of Companies and Enterprises
47	Management of Companies and Enterprises
48	Management of Companies and Enterprises
49	Management of Companies and Enterprises
50	Management of Companies and Enterprises
51	Management of Companies and Enterprises
52	Management of Companies and Enterprises
53	Management of Companies and Enterprises
54	Management of Companies and Enterprises
55	Management of Companies and Enterprises
56	Management of Companies and Enterprises
57	Management of Companies and Enterprises
58	Management of Companies and Enterprises
59	Management of Companies and Enterprises
60	Management of Companies and Enterprises
61	Management of Companies and Enterprises
62	Management of Companies and Enterprises
63	Management of Companies and Enterprises
64	Management of Companies and Enterprises
65	Management of Companies and Enterprises
66	Management of Companies and Enterprises
67	Management of Companies and Enterprises
68	Management of Companies and Enterprises
69	Management of Companies and Enterprises
70	Management of Companies and Enterprises
71	Management of Companies and Enterprises
72	Management of Companies and Enterprises
73	Management of Companies and Enterprises
74	Management of Companies and Enterprises
75	Management of Companies and Enterprises
76	Management of Companies and Enterprises
77	Management of Companies and Enterprises
78	Management of Companies and Enterprises
79	Management of Companies and Enterprises
80	Management of Companies and Enterprises
81	Management of Companies and Enterprises
82	Management of Companies and Enterprises
83	Management of Companies and Enterprises
84	Management of Companies and Enterprises
85	Management of Companies and Enterprises
86	Management of Companies and Enterprises
87	Management of Companies and Enterprises
88	Management of Companies and Enterprises
89	Management of Companies and Enterprises
90	Management of Companies and Enterprises
91	Management of Companies and Enterprises
92	Management of Companies and Enterprises
93	Management of Companies and Enterprises
94	Management of Companies and Enterprises
95	Management of Companies and Enterprises
96	Management of Companies and Enterprises
97	Management of Companies and Enterprises
98	Management of Companies and Enterprises
99	Management of Companies and Enterprises





Build a bridge!

*For more information,
please contact Liz Shephard*

CEO, LifeCity, Liz@mylifecity.com

