



**Reserve  
Equipment,  
Inc.**

MOBILE GAS COMPRESSION SERVICES

13310 HEMPSTEAD HIGHWAY, HOUSTON, TX. 77040

(713) 939-8988

JMEREDITH@RESERVEEQUIPMENT.COM

RESERVEEQUIPMENT.COM



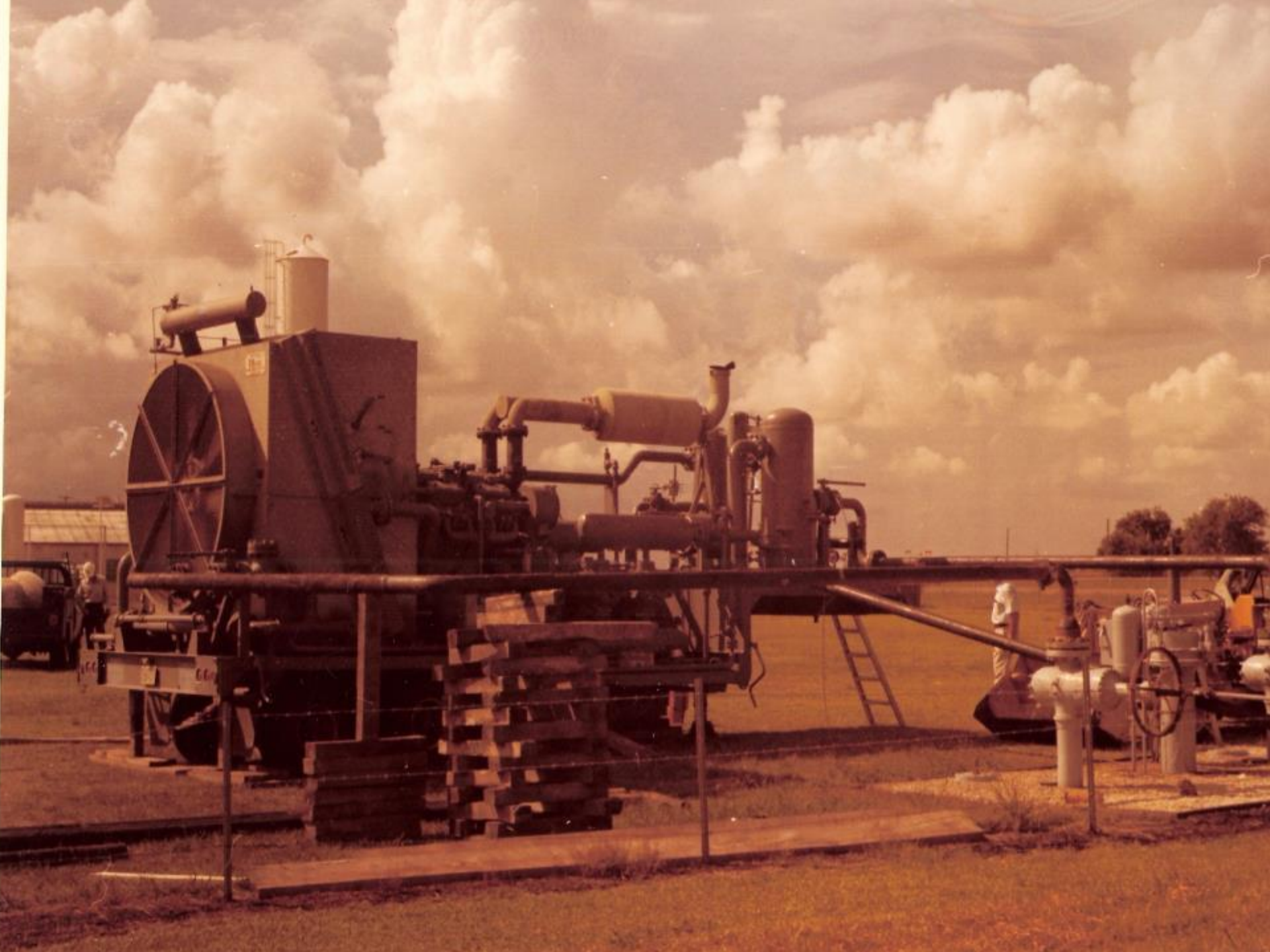
**DANGER**  
NO  
TRESPASSING



# SERVICES RESERVE EQUIPMENT PERFORMS

- **PIPELINE EVACUATION**
- PRESSURE BOOSTING FROM LNG VAPORIZERS
- PRESSURE BOOSTING FOR OVERPRESSURE TESTING OF PIPELINES
- PUSH PIGS
- TEMPORARY COMPRESSION













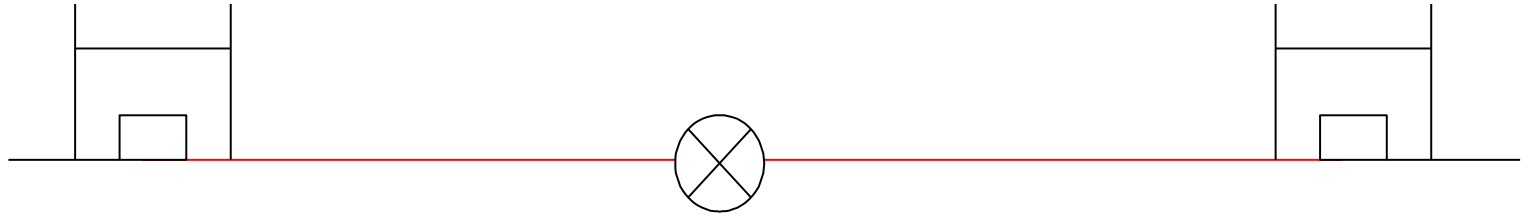




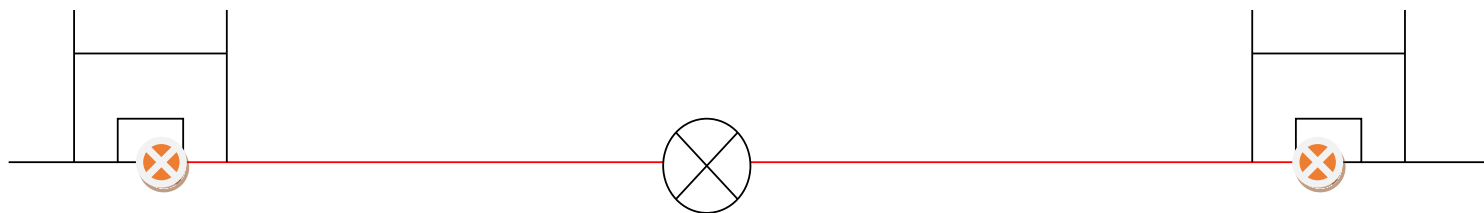


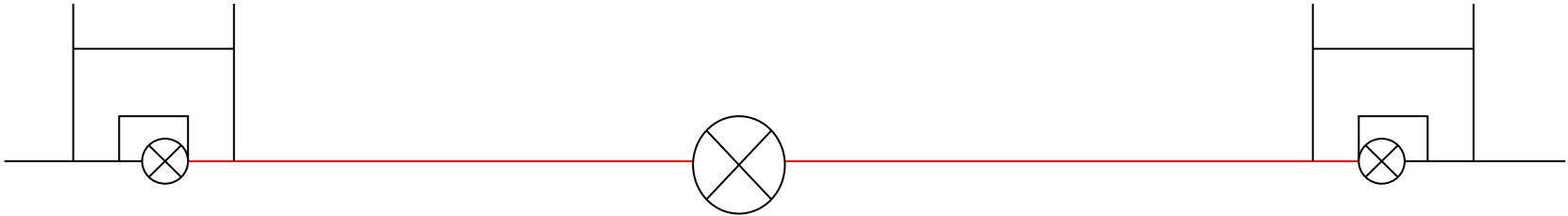
## Two Parallel Pipelines, Valves, Crossovers





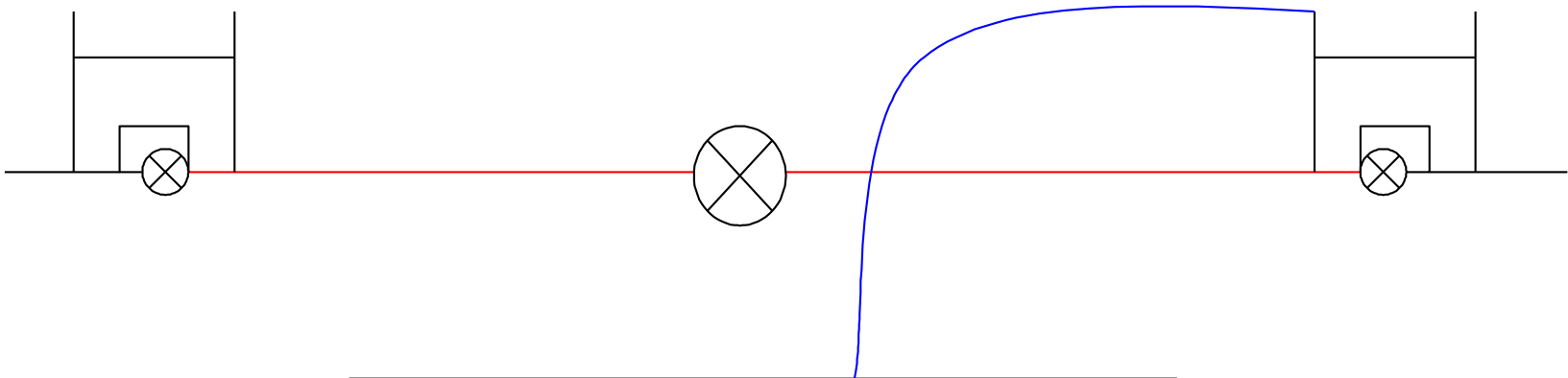






## RESERVE EQUIPMENT EVACUATION UNIT

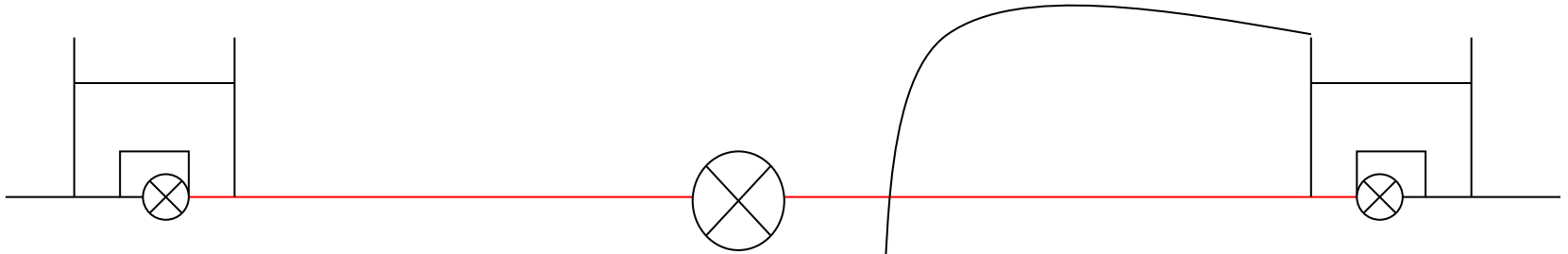




**RESERVE EQUIPMENT  
EVACUATION UNIT**

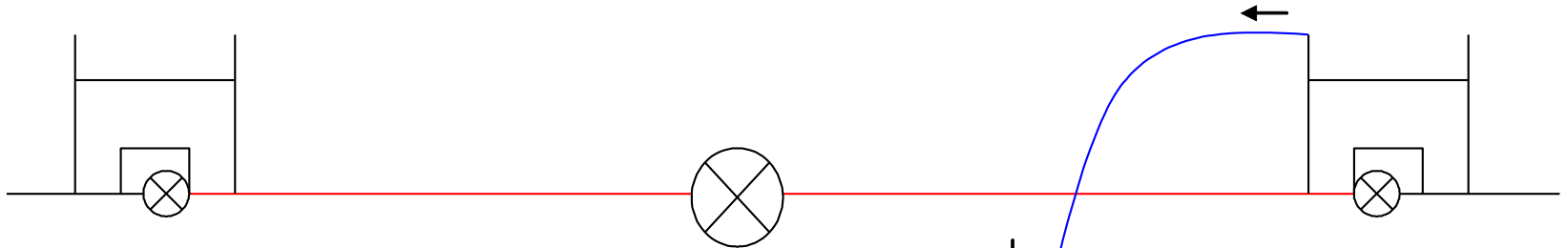






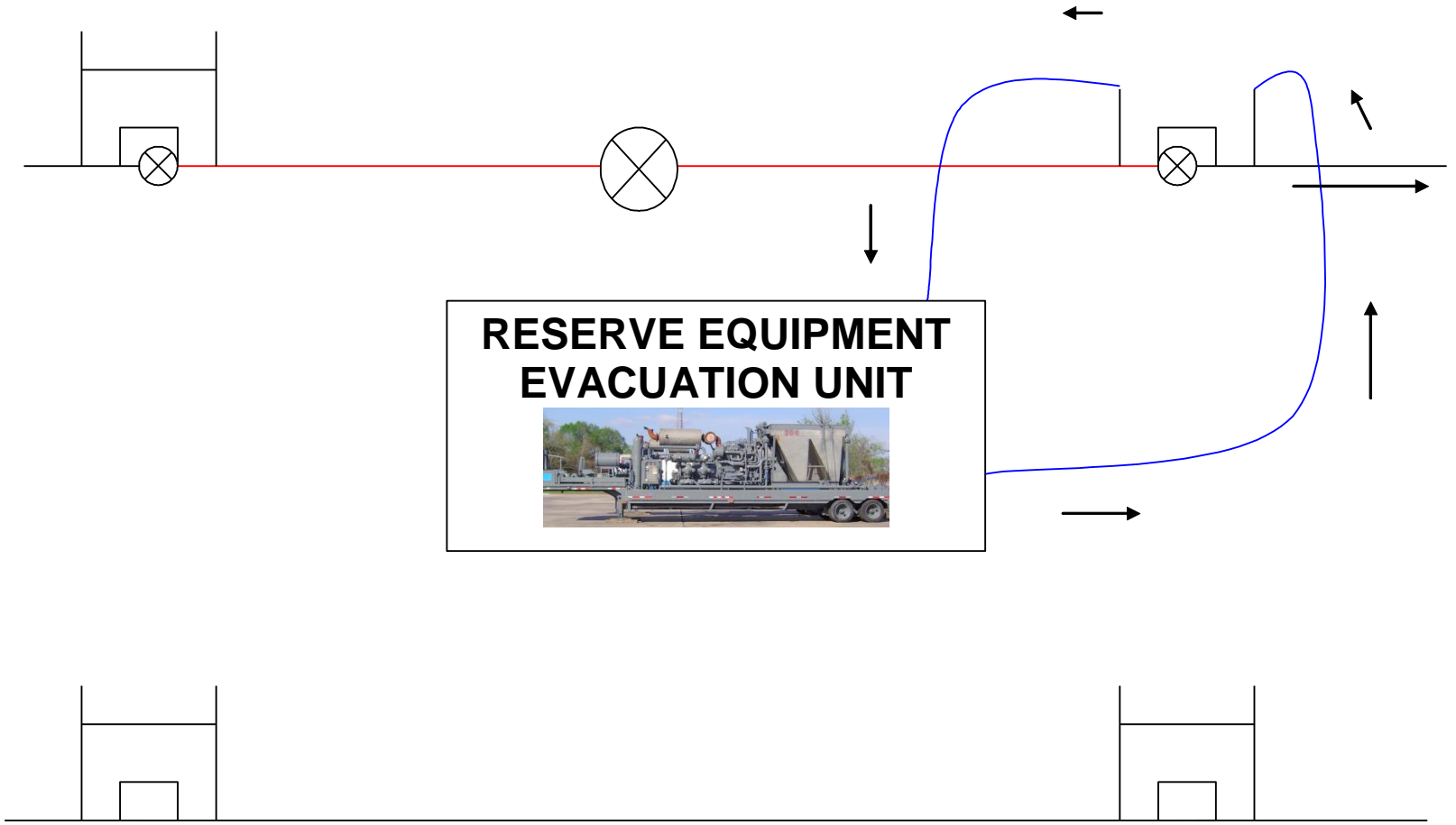
**RESERVE EQUIPMENT  
EVACUATION UNIT**





**RESERVE EQUIPMENT  
EVACUATION UNIT**





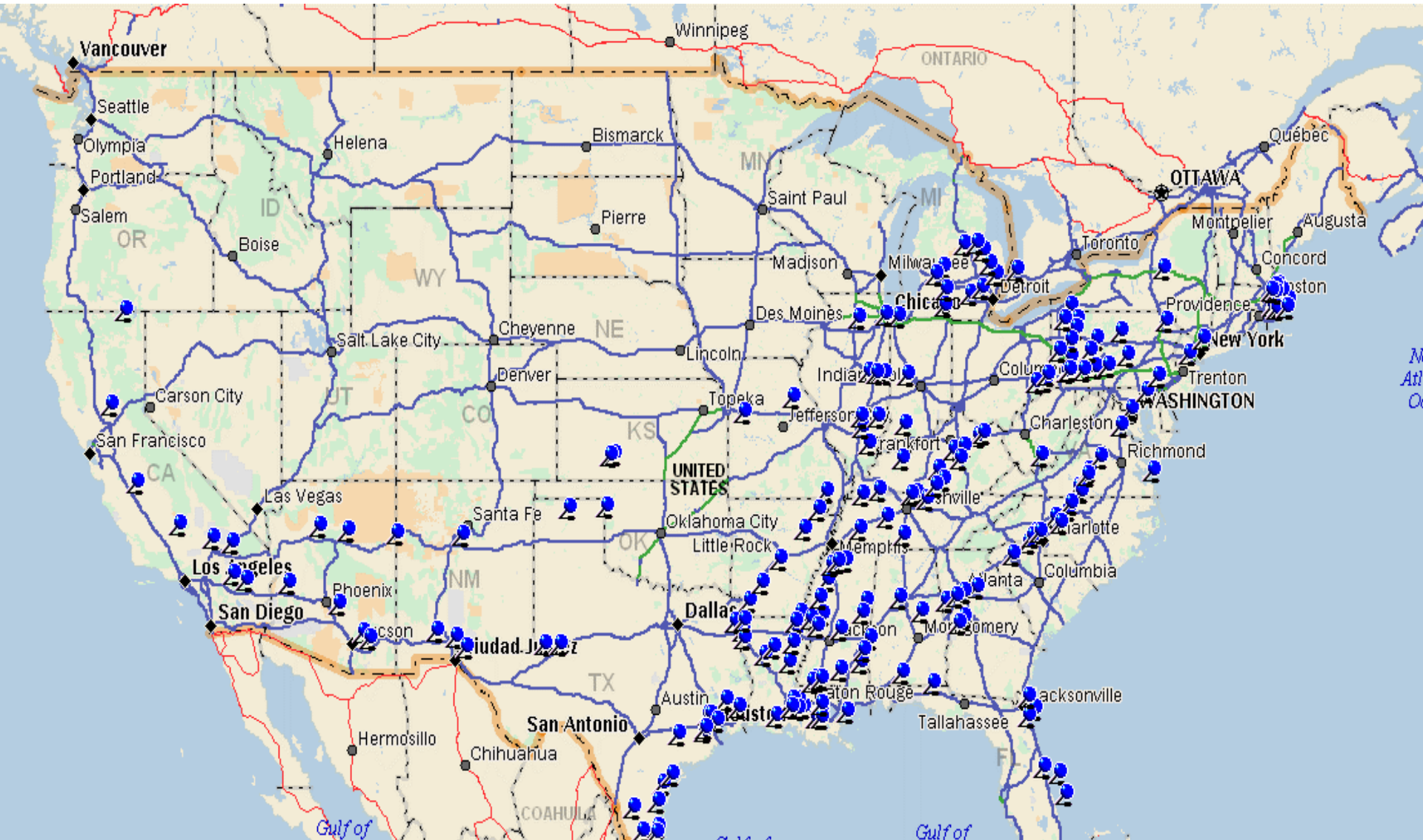
**RESERVE EQUIPMENT  
EVACUATION UNIT**







# 2010 Evacuation Projects



# Request for Proposal

## RESERVE EQUIPMENT, INC.

Web Site: [www.reserveequipment.com](http://www.reserveequipment.com)  
4101 Dayco, Houston, TX. 77092  
Tel: (713) 939-8988 Fax: (713) 939-8994  
E-mail: [jpmreserve@aol.com](mailto:jpmreserve@aol.com)  
[bryan@reserveequipment.com](mailto:bryan@reserveequipment.com)

## REQUEST FOR PROPOSAL

Company: \_\_\_\_\_  
Contact: \_\_\_\_\_  
Phone: \_\_\_\_\_  
Fax / E-Mail: \_\_\_\_\_

---

Project: Estimated Date Of Start-up \_\_\_\_\_  
Line Identification \_\_\_\_\_  
Total Pipeline Length \_\_\_\_\_ Miles  
Pipeline Diameter \_\_\_\_\_ Inches  
Pipe Wall Thickness \_\_\_\_\_ Inches  
Project Location \_\_\_\_\_  
Dollar Value of Gas \_\_\_\_\_ / Mcf.  
Starting Suction Psig. \_\_\_\_\_ Psig.  
Desired Final Suction Psig. \_\_\_\_\_ Psig.  
Estimated Discharge Psig. \_\_\_\_\_ Psig.  
Min/ Max Time Allowed \_\_\_\_\_ Hours



Customer: jpm Job: rocks

Total Gas: 19.2(MMSCF) In Pipeline at Initial Pressure 730 (PSIG)

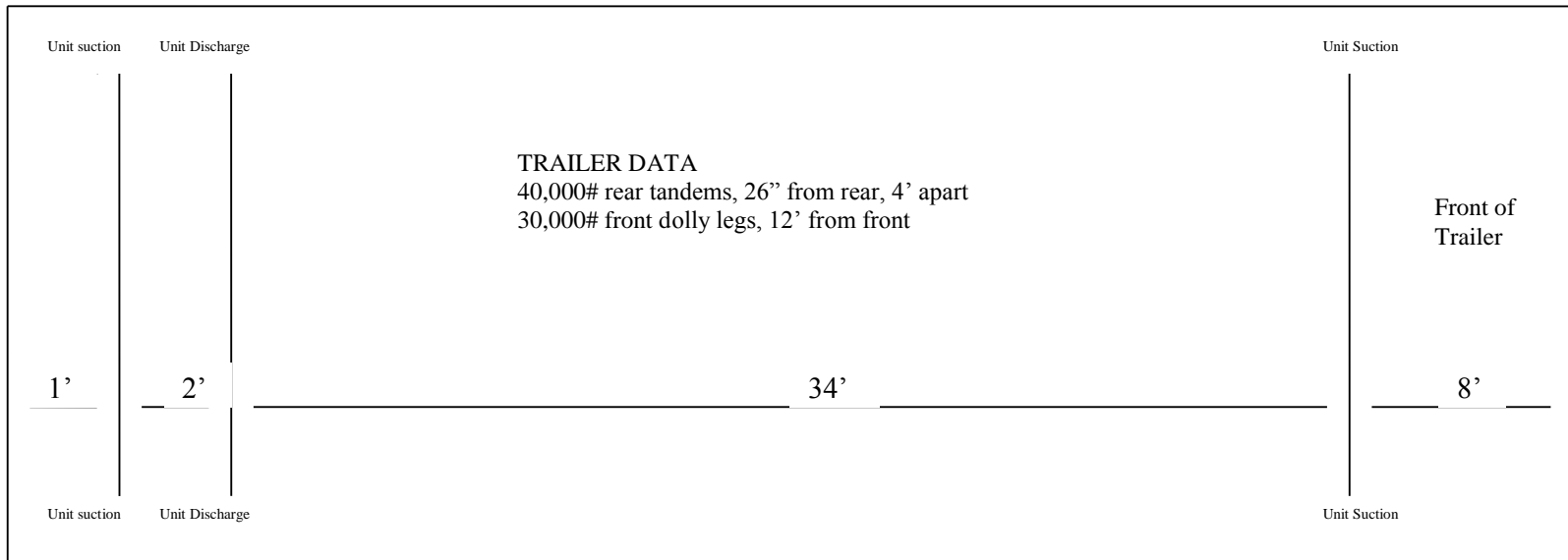
Suction Line Pressure PSIG	Required Time Hr	Gas Removed MMSCF	Value of Gas Removed 1000\$	Suction Line Pressure PSIG	Required Time Hr	Gas Removed MMSCF	Value of Gas Removed 1000\$	Suction Line Pressure PSIG	Required Time Hr	Gas Removed MMSCF	Value of Gas Removed 1000\$	Suction Line Pressure PSIG	Required Time Hr	Gas Removed MMSCF	Value of Gas Removed 1000\$
725	0.1	0.15	0.4	545	4.7	5.21	14.1	365	12.4	9.98	26.9	185			
720	0.2	0.29	0.8	540	4.9	5.35	14.4	360	12.7	10.11	27.3	180			
715	0.3	0.44	1.2	535	5.0	5.49	14.8	355	13.0	10.24	27.6	175			
710	0.4	0.58	1.6	530	5.2	5.62	15.2	350	13.3	10.36	28.0	170			
705	0.6	0.72	2.0	525	5.4	5.76	15.5	345	13.5	10.49	28.3	165			
700	0.7	0.87	2.3	520	5.5	5.89	15.9	340	13.8	10.62	28.7	160			
695	0.8	1.01	2.7	515	5.7	6.03	16.3	335	14.1	10.75	29.0	155			
690	0.9	1.16	3.1	510	5.9	6.16	16.6	330	14.5	10.87	29.4	150			
685	1.0	1.30	3.5	505	6.1	6.30	17.0	325	14.8	11.00	29.7	145			
680	1.1	1.44	3.9	500	6.3	6.43	17.4	320	15.1	11.13	30.0	140			
675	1.2	1.58	4.3	495	6.4	6.57	17.7	315	15.4	11.25	30.4	135			
670	1.4	1.73	4.7	490	6.6	6.70	18.1	310	15.7	11.38	30.7	130			
665	1.5	1.87	5.0	485	6.8	6.83	18.5	305	16.1	11.51	31.1	125			
660	1.6	2.01	5.4	480	7.0	6.97	18.8	300	16.4	11.63	31.4	120			
655	1.7	2.15	5.8	475	7.2	7.10	19.2	295	16.7	11.76	31.7	115			
650	1.9	2.30	6.2	470	7.4	7.23	19.5	290	17.1	11.88	32.1	110			
645	2.0	2.44	6.6	465	7.6	7.37	19.9	285	17.5	12.01	32.4	105			
640	2.1	2.58	7.0	460	7.8	7.50	20.2	280	17.8	12.13	32.8	100			
635	2.2	2.72	7.3	455	8.0	7.63	20.6	275	18.2	12.26	33.1	95			
630	2.3	2.86	7.7	450	8.2	7.76	21.0	270	18.6	12.38	33.4	90			
625	2.5	3.00	8.1	445	8.4	7.90	21.3	265	18.9	12.51	33.8	85			
620	2.6	3.14	8.5	440	8.7	8.03	21.7	260	19.3	12.63	34.1	80			
615	2.7	3.28	8.9	435	8.9	8.16	22.0	255	19.7	12.76	34.4	75			
610	2.9	3.42	9.2	430	9.1	8.29	22.4	250	20.1	12.88	34.8	70			
605	3.0	3.56	9.6	425	9.4	8.42	22.7	245	20.5	13.00	35.1	65			
600	3.1	3.70	10.0	420	9.6	8.55	23.1	240	20.9	13.13	35.4	60			
595	3.3	3.84	10.4	415	9.8	8.68	23.4	235	21.3	13.25	35.8	55			
590	3.4	3.98	10.7	410	10.1	8.81	23.8	230	21.8	13.37	36.1	50			
585	3.5	4.11	11.1	405	10.3	8.94	24.2	225	22.2	13.50	36.4	45			
580	3.7	4.25	11.5	400	10.6	9.07	24.5	220	22.7	13.62	36.8	40			
575	3.8	4.39	11.9	395	10.8	9.20	24.9	215	23.1	13.74	37.1	35			
570	4.0	4.53	12.2	390	11.1	9.33	25.2	210	23.6	13.86	37.4	30			
565	4.1	4.67	12.6	385	11.3	9.46	25.6	205	24.0	13.99	37.8	25			
560	4.3	4.80	13.0	380	11.6	9.59	25.9	200	24.5	14.11	38.1	20			
555	4.4	4.94	13.3	375	11.9	9.72	26.2	195	25.0	14.23	38.4	15			
550	4.6	5.08	13.7	370	12.1	9.85	26.6	190	25.5	14.35	38.7	10			





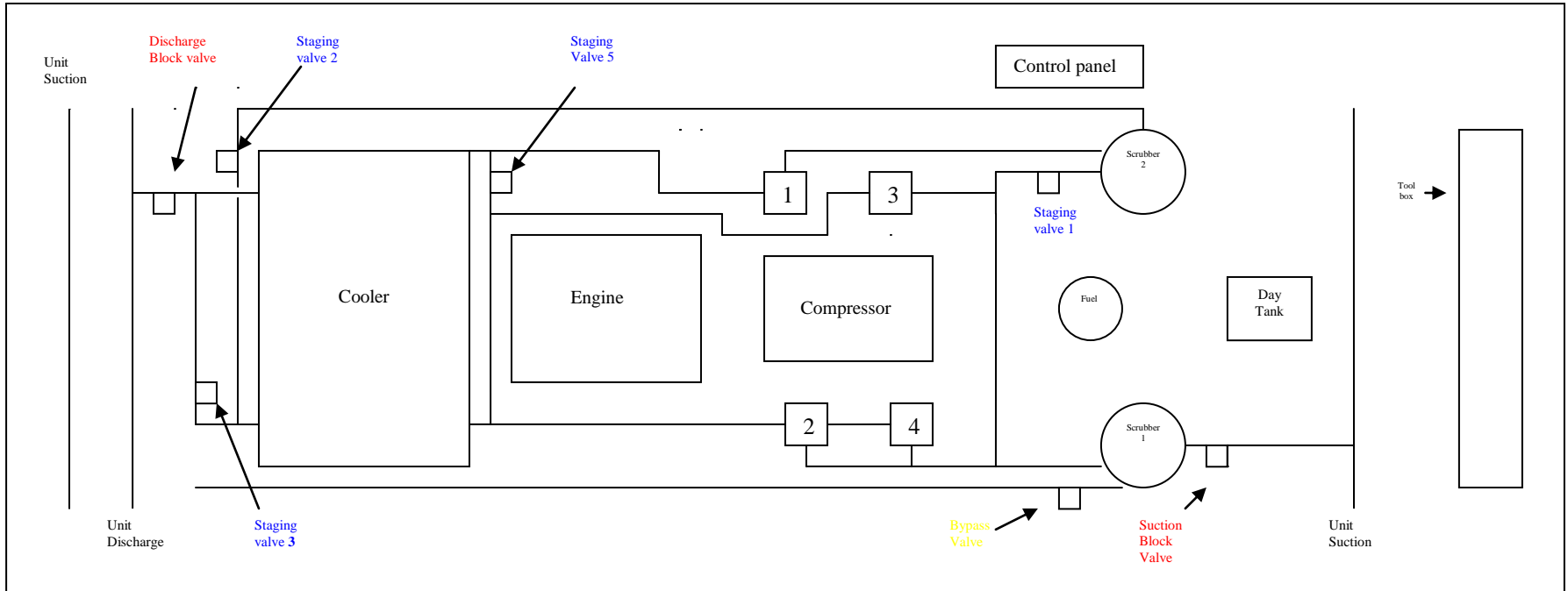


# RESERVE EQUIPMENT, INC. 300 UNIT FOOTPRINT



← 42 - 45 →

# LAYOUT OF PIPING AND VALVING ON A STANDARD UNIT



## STAGING MACHINE

### VALVE

### SINGLE STAGE

### TWO STAGE

1

OPEN

CLOSED

2

CLOSED

OPEN

3

OPEN

CLOSED

5

OPEN

CLOSED



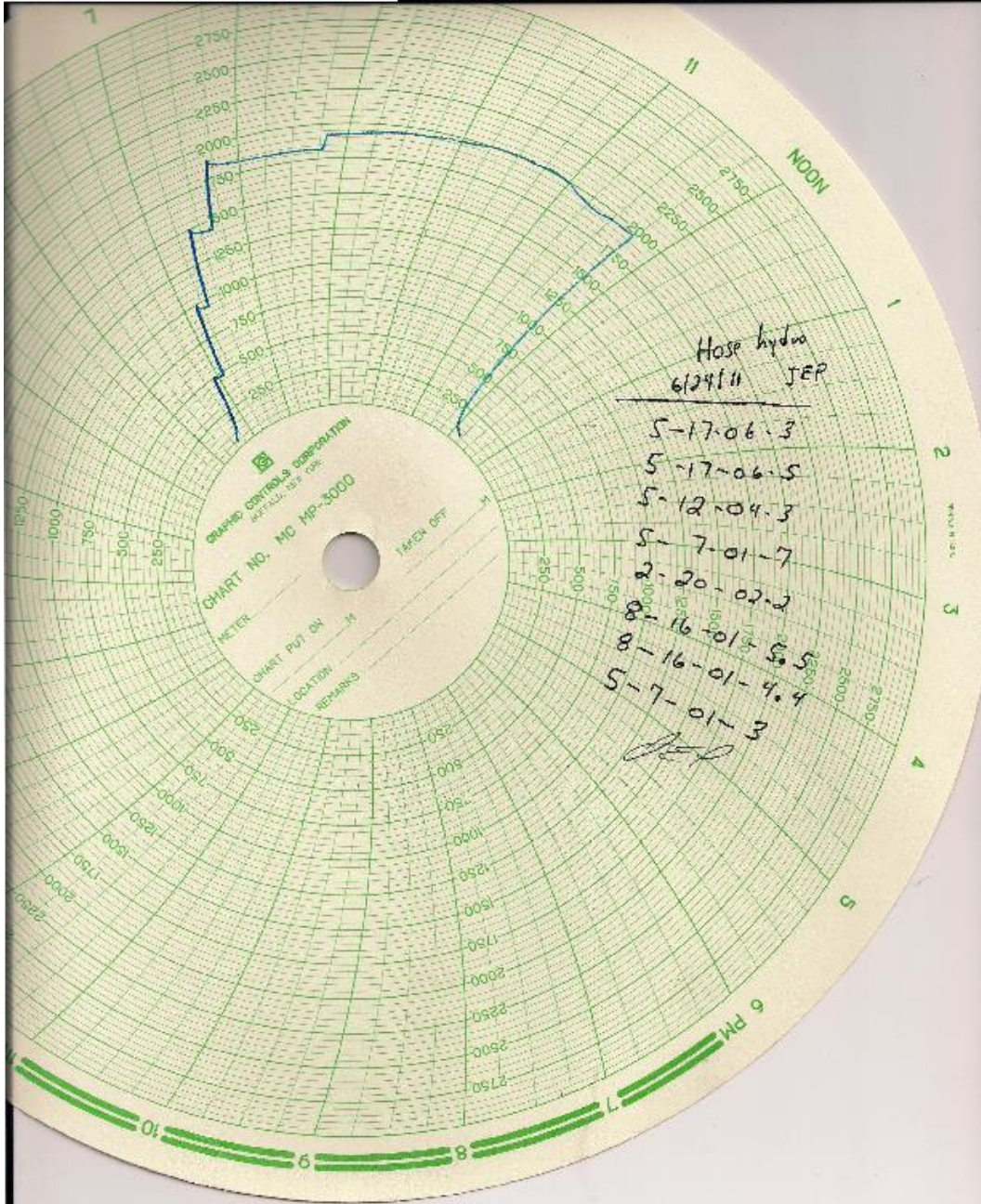








8-29-12-5



GRAPHIC CONTROLS CORPORATION  
 CHART NO. MC MP-3000

METER \_\_\_\_\_  
 CHART PVT. OR \_\_\_\_\_  
 LOCATION \_\_\_\_\_  
 REPAIRS \_\_\_\_\_

Hose hydros  
 6/24/11 JEP

- 5-17-06-3
  - 5-17-06-5
  - 5-12-04-3
  - 5-7-01-7
  - 2-20-02-2
  - 8-16-01-5.5
  - 8-16-01-4.4
  - 5-7-01-3
- JEP



# ***SEAL PRO***

FITTINGS, HOSES, COMPONENTS, MACHINING AND SEALING PRODUCTS FOR INDUSTRY

## **NATURAL GAS DISCHARGE HOSE**

**ID: 3"**

**OD: 4.12"**

**WEIGHT PER 20' LENGTH: 209#**

**WORKING PRESSURE: 2000 PSI**

**TEST PRESSURE: 3000 PSI**

**BURST PRESSURE: 5000 PSI**

**TUBE: BLACK OIL RESISTANT HYDROGENATED NITRILE  
(HNBR) TO HANDLE UP TO 7% H<sub>2</sub>S**

**COVER: BLACK OIL RESISTANT AND ABRASION RESISTANT  
NEOPRENE (CR) PIN PRICKED FOR GAS SERVICE  
-40 TO + 180 DEG. F.**

**FLANGES: 600# RF FLANGES WELDED EACH END**

**LINER: STAINLESS STEEL INNER LINER**

**TESTING: HOSES TESTED AT FACTORY FOR 10 MIN. AFTER  
FABRICATION COMPLETE WITH CERTIFICATION**

**MINIMUM BEND RADIUS: 30"**







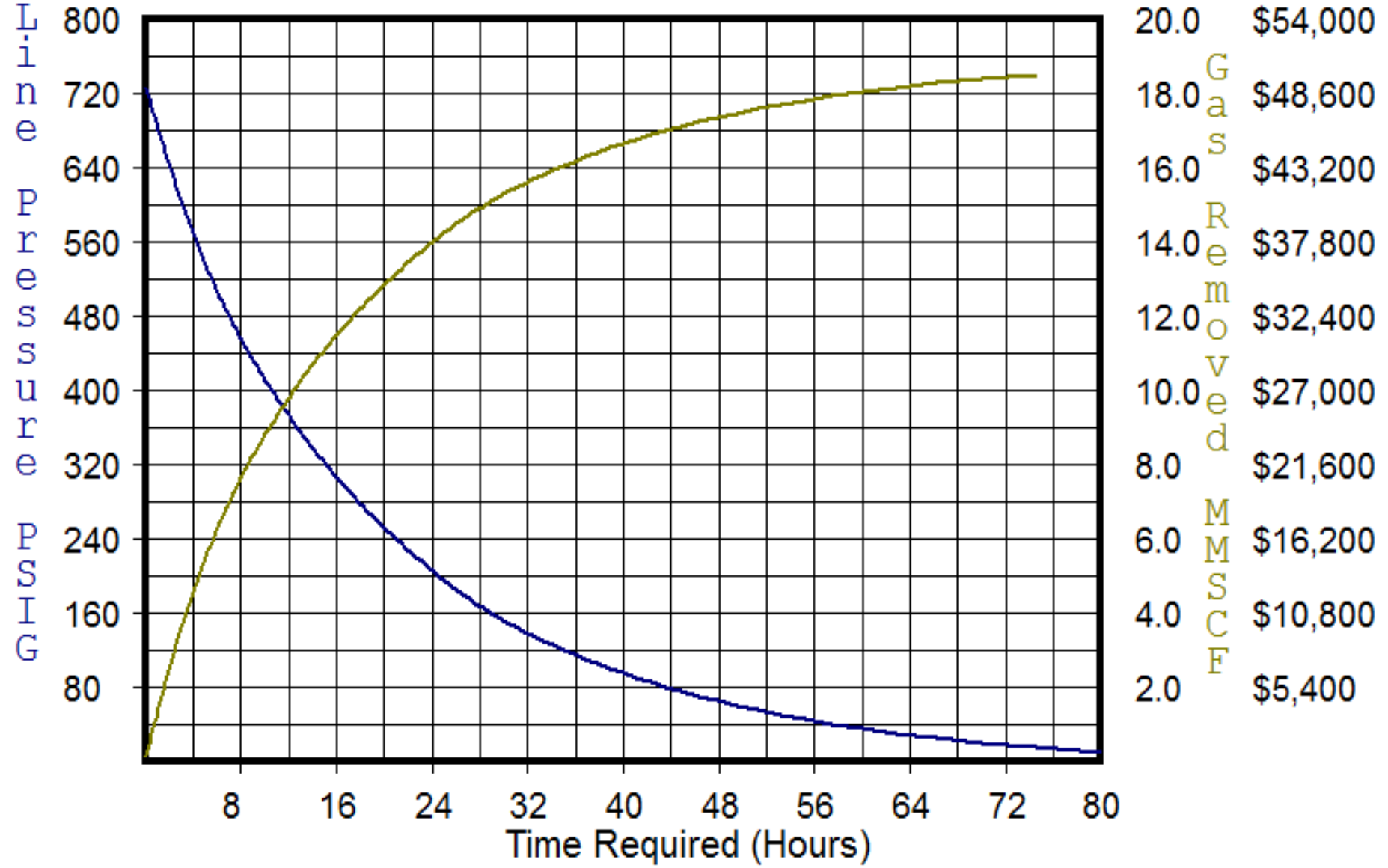






Reserve Equipment-Pipe Line Evacuation Curve:14.00 miles of 30 Inch Dia. Pipe.

Total Gas: 19.2 (MMSCF) In Pipeline at Initial Pressure 730 (PSIG)



## OVERVIEW / 2015 - EVACUATION PROJECTS

CUSTOMER	TOTAL PROJECTS	MILES OF PIPELINE	GAS RECOVERED (MMSCF)	RECOVERED GAS VALUE (\$3 USD)
ALGONQUIN	4	23.40	3.90	\$11,700
ANR PIPELINE COMPANY	13	180.73	235.37	\$706,110
ATMOS ENERGY, INC	1	14.00	14.98	\$44,940
CONSUMERS ENERGY	22	393.22	177.31	\$531,930
EL PASO CORPORATION	9	188.05	172.41	\$517,230
ENTERPRISE PRODUCTS PARTNERS	3	41.80	8.54	\$25,620
FLORIDA GAS TRANSMISSION COMPANY	14	210.04	163.05	\$489,150
NGPL	19	424.16	456.50	\$1,369,500
KINETICA	1	17.15	2.81	\$8,430
NORTHWEST PIPELINE	1	23.70	16.02	\$48,060
PACIFIC GAS & ELECTRIC COMPANY	18	221.64	300.79	\$902,370
SOUTHERN CALIFORNIA GAS COMPANY (SEMPRA)	2	95.86	22.67	\$68,010
SOUTHERN NATURAL GAS	3	72.58	32.62	\$97,860
SAN DIEGO GAS	1	1.00	0.26	\$780
TENNESSEE GAS PIPELINE COMPANY	64	1,350.29	1366.36	\$4,099,080
TEXAS EASTERN TRANSMISSION / SPECTRA	49	935.84	1,000.63	\$3,001,890
TEXAS GAS TRANSMISSION (BOARDWALK)	21	267.06	180.50	\$541,500
TRUNKLINE GAS COMPANY (SUG)	15	878.06	669.56	\$2,008,680
WILLIAMS (TRANSCO)	46	582.76	719.83	\$2,159,490
<b>TOTALS</b>	<b>306</b>	<b>5,921.34</b>	<b>5,544.11</b>	<b>\$16,632,330</b>

# *ONE CUSTOMER EVACUATION SUMMARY 2010 - 2015*

	PROJECTS	GAS REMOVED (MMSCF)	GAS REMOVED (\$3/MCF)	INVOICE AMOUNT
2010	59	966.96	2,900,880	1,842,000
2011	77	1,373.57	4,120,710	2,660,242
2012	68	1,119.89	3,359,670	2,328,522
2013	60	1,060.72	3,182,160	2,086,255
2014	38	667.81	2,003,430	1,296,113
2015	47	735.85	2,207,550	1,483,724
2016 YTD 9/19/2016	61	1,200.27	3,600,810	2,255,210
<b><i>TOTALS</i></b>	410	7,125.07	\$21,375,210	\$13,952,066



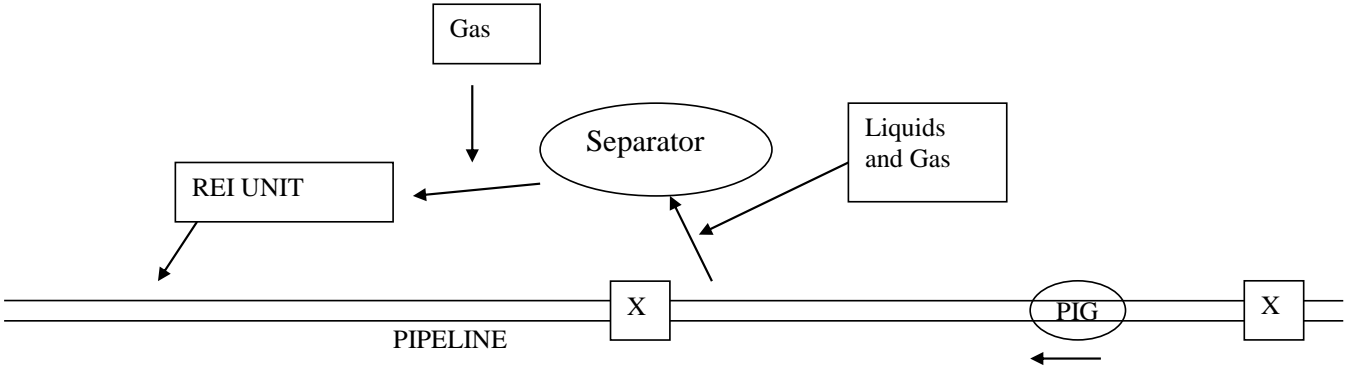
# 10 YEAR SUMMARY

YEAR	PROJECTS	MILES OF PIPELINE	GAS RECOVERED MMSCF
2015	306	5,921	5,544
2014	286	4,653	4,662
2013	306	5,821	4,952
2012	321	5,894	5,290
2011	414	7,241	6,343
2010	374	6,030	5,364
2009	364	6,889	5,783
2008	341	5,856	5,350
2007	353	5,659	5,483
2006	302	5,540	4,521
<b>TOTALS</b>	<b>3,367</b>	<b>59,504</b>	<b>53,292</b>

# SERVICES RESERVE EQUIPMENT PERFORMS

- PIPELINE EVACUATION
- PRESSURE BOOSTING FROM LNG VAPORIZERS
- PRESSURE BOOSTING FOR OVERPRESSURE TESTING OF PIPELINES
- PUSH PIGS
- **TEMPORARY COMPRESSION**

# Pulling Gas Off of a Separator













**Reserve  
Equipment,  
Inc.**

MOBILE GAS COMPRESSION SERVICES

13310 HEMPSTEAD HIGHWAY, HOUSTON, TX. 77040

(713) 939-8988

JMEREDITH@RESERVEEQUIPMENT.COM

RESERVEEQUIPMENT.COM