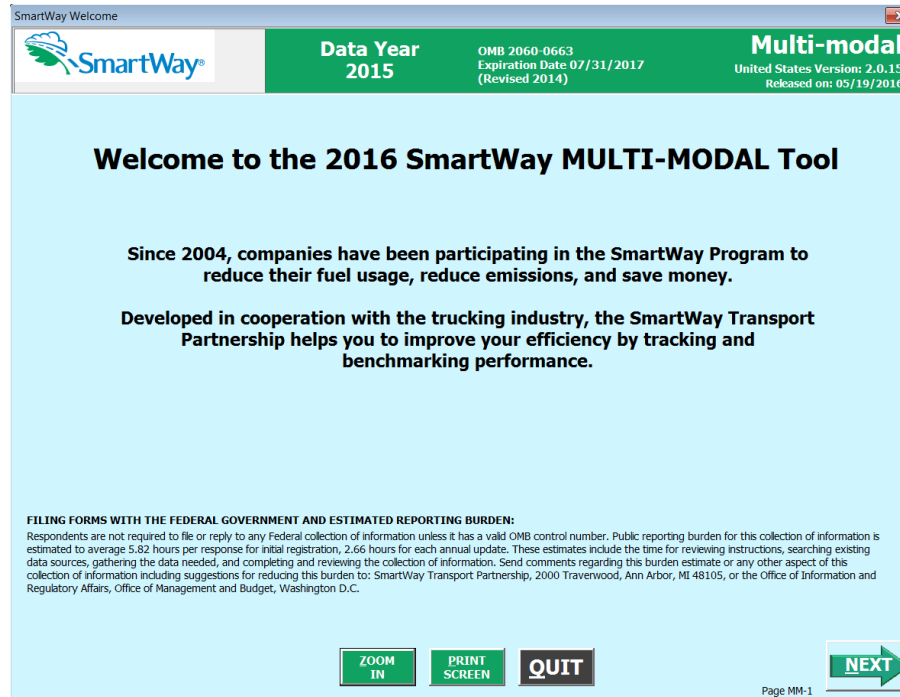



# SmartWay Transport Partnership Multimodal Tool Webinar



SmartWay Welcome

 **Data Year 2015** OMB 2060-0663 Expiration Date 07/31/2017 (Revised 2014) **Multi-modal** United States Version: 2.0.15 Released on: 05/19/2016

## Welcome to the 2016 SmartWay MULTI-MODAL Tool

Since 2004, companies have been participating in the SmartWay Program to reduce their fuel usage, reduce emissions, and save money.

Developed in cooperation with the trucking industry, the SmartWay Transport Partnership helps you to improve your efficiency by tracking and benchmarking performance.

**FILING FORMS WITH THE FEDERAL GOVERNMENT AND ESTIMATED REPORTING BURDEN:**  
Respondents are not required to file or reply to any Federal collection of information unless it has a valid OMB control number. Public reporting burden for this collection of information is estimated to average 5.82 hours per response for initial registration, 2.66 hours for each annual update. These estimates include the time for reviewing instructions, searching existing data sources, gathering the data needed, and completing and reviewing the collection of information. Send comments regarding this burden estimate or any other aspect of this collection of information including suggestions for reducing this burden to: SmartWay Transport Partnership, 2000 Traverwood, Ann Arbor, MI 48105, or the Office of Information and Regulatory Affairs, Office of Management and Budget, Washington D.C.

[ZOOM IN](#) [PRINT SCREEN](#) [QUIT](#) [NEXT](#)

Page MM-1

Matthew Payne

US Environmental Protection Agency

June 1, 2016



# Covered Today

- **Background**
- **What's new this year**
- **Key points to remember when filling out your tool**
- **Demonstration**

# Why Participate?

**Fuel Use = \$\$\$ = CO<sub>2</sub>**

Many SmartWay Shippers prefer or require SmartWay carriers

Shippers need carrier data for corporate sustainability reports, stockholder reports, media and customer relations, and multinationals face global regulations and requirements



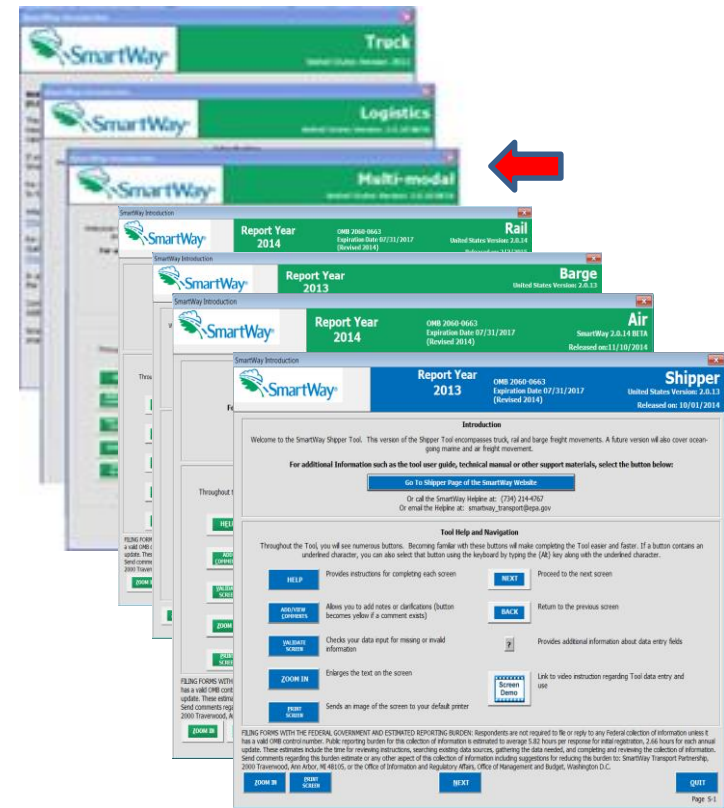
# History

- SmartWay was initiated as a voluntary market based program with members of the U.S. Freight industry in 2001.
  - Improve the reputation of the freight industry
  - Improve the efficiency and competitiveness of the freight industry
  - Reduce the release of harmful emissions



- Launched in 2004
- Currently over 3000 Carriers and over 250 Shippers are members of SmartWay.
- SmartWay is the Global Standard in Freight Emissions Reporting
  - ...According to the Massachusetts Institute of Technology.

# SmartWay is an Integrated System



## Carrier Data Collection Tools

- Truck, Logistics, Barge, Rail, Multimodal Suite
- **Air Tool released in 2016**

## Shipper Tool

- Calculates carrier emission footprints for Shippers

## SmartWay “Process”

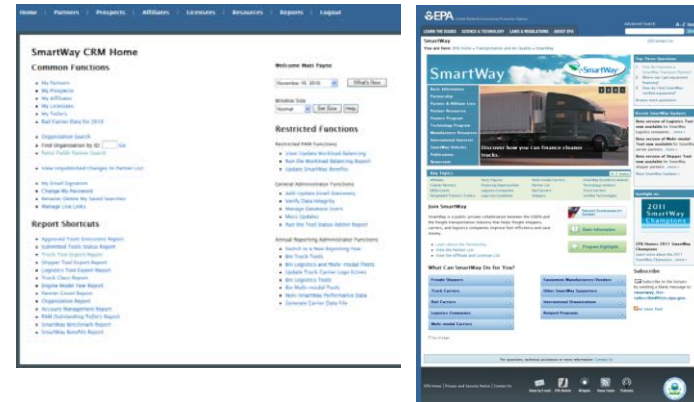
- Data collection, processing, QA/QC, benchmarking
- Produces 6 emission factors for public use

## SmartWay Database

- Stores and manages all SmartWay data
- Allows industry benchmarking

## SmartWay Website

- Contains downloadable versions of all tools, user guides, technical documentation, webinars, program descriptions. <http://www3.epa.gov/smartway/>



# 2016 SmartWay Carrier Categories and Data Specificity

TRUCK	Dry Van & Chassis	Reefer	Flatbed	Tanker	Heavy & Bulk	Auto Carrier	Moving	Specialized & Utility	Mixed
Dray	Dray 5 Performance Levels								
Truckload	Truckload DryVan 5 Performance Levels	Reefer 5 Performance Levels	Flatbed 5 Performance Levels	Tanker 5 Performance Levels	Heavy & Bulk 5 Performance Levels	Auto Carrier 5 Performance Levels	Moving 5 Performance Levels	Specialized & Utility 5 Performance Levels	Mixed 5 Performance Levels
Expedited	Expedited 5 Performance Levels								
LTL	LTL 5 Performance Levels								
Package	Package Delivery 5 Performance Levels								
Mixed	Mixed								

Rail	Single Modal Average for All Rail (No company differentiation allowed per Association of American Railroads)
------	---

Barge	Company Specific Data
-------	-----------------------

Air	To be Determined (most will be included in MM company composite fleets)
-----	--

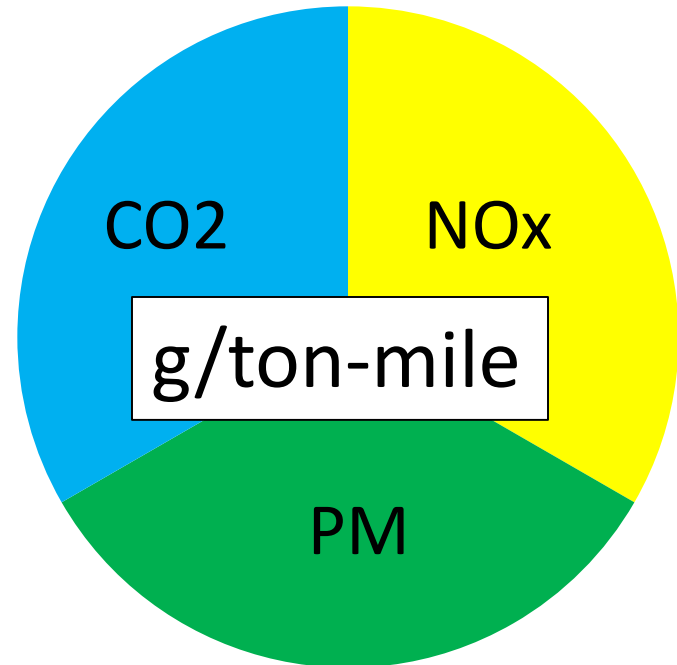
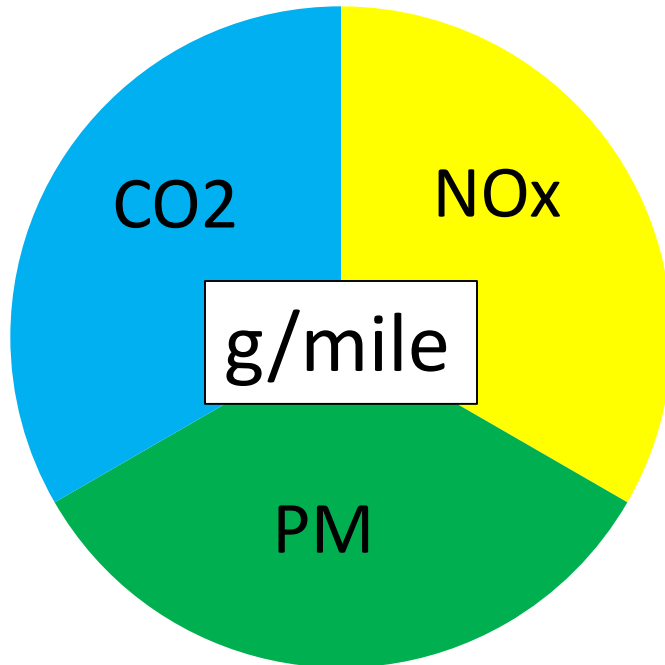
Logistics	5 Performance Levels
-----------	----------------------

Multimodal	Emission Factor Data Only (No 5 Performance Level Ranking)
------------	---

Marine	To Be Determined
--------	------------------

# SmartWay's 6 Public Emission Metrics

What do SmartWay metrics actually measure?



		<b>g/mile</b> Amount of pollution for every mile travelled	<b>g/ton-mile</b> Amount of pollution for <b>every ton</b> that travels one mile
<b>CO2</b>	A surrogate for fuel efficiency and global warming	Based on miles, fuel used	Based on miles, fuel used, <b>average payload</b>
<b>NOx &amp; PM</b>	Essentially smog and soot, a health concern for drivers and people living near heavy truck traffic (rest stops and truck routes)	Based on age of trucks, class/size of trucks, highway versus urban driving, speed of urban driving, idling, and aftertreatment devices	Based on age of trucks, class/size of trucks, highway versus urban driving, speed of urban driving, idling, and aftertreatment devices, <b>average payload</b>

# SmartWay Performance Report for Carriers

## (Public Data: What Your Customers Can See)

Performance Rankings

### TRUCKLOAD DRYVAN FLEETS

OLD DATA

Click down arrows to filter data by column categories. Select one or more items in the dropdown checklists.

To search by name, SCAC or MCN, click CTRL + F to bring up the search dialogue box, then type in the 4 letter SCAC , the 8 digit MCN, or all or part of the company name.

Performance Ranking=midpoint of the performance range for the metric

Note: gm=grams/mile and gtm=g/ton-mile

						Performance Rankings and Emission Factors											
						Grams per Mile						Grams per Ton-Mile					
CompanyDivisionName	Mode	SubMode	Fleet Type	SCAC	MCN	g/mile	g/mile	g/mile	g/mile	g/mile	g/mile	g/tm	g/tm	g/tm	g/tm	g/tm	g/tm
						CO2 Rank	CO2	NOx Rank	NOx	PM Ra	PM	CO2 Rank	CO2	NOx Rank	NOx	PM Rank	PM
101 Transport, Inc.	Truck	TL/Dry Van	For-Hire	OZOT	MC625894	2	1560	3	5.9	5	0.086	1	74	3	0.375	5	0.008
1541335 Ontario Inc./Road Link Xpress	Truck	TL/Dry Van	For-Hire	ROAD	MCN/A	5	1800	3	5.9	5	0.086	2	84	2	0.225	4	0.006
1st Express Inc.	Truck	TL/Dry Van	For-Hire	FSEP	MC181440	2	1560	3	5.9	5	0.086	2	84	2	0.225	4	0.006
3NT, LLC.	Truck	TL/Dry Van	For-Hire	THLL	MC716290	2	1560	1	0.9	1	0.006	1	74	1	0.075	1	0
5/D Express, Inc.: 5/D Express,Inc	Truck	TL/Dry Van	For-Hire	FDRP	MC488737	3	1640	3	5.9	5	0.086	1	74	2	0.225	3	0.004
A&M Transport, Inc.: Dry Van Fleet	Truck	TL/Dry Van	For-Hire	ALKM	MC217072	4	1720	4	8.4	5	0.086	2	84	3	0.375	4	0.006
A&S Services Group, LLC	Truck	TL/Dry Van	For-Hire	ANSW	MC164166	2	1560	2	3.4	2	0.026	4	104	2	0.225	2	0.002
A.C. Trucking, Inc.: 12073707	Truck	TL/Dry Van	For-Hire	AKGM	MC196190	3	1640	3	5.9	2	0.026	1	74	3	0.375	2	0.002
A.D. Transport Express, Inc.	Truck	TL/Dry Van	For-Hire	ADXR	MC195625	1	1480	2	3.4	2	0.026	5	114	3	0.375	2	0.002
A.N. Webber, Inc.	Truck	TL/Dry Van	For-Hire	WANQ	MC147008	3	1640	2	3.4	2	0.026	3	94	2	0.225	2	0.002
A/T Transportation, LLC.	Truck	TL/Dry Van	For-Hire	AUCR	MCN/A	4	1720	2	3.4	3	0.046	2	84	2	0.225	2	0.002
Abilene Motor Express	Truck	TL/Dry Van	For-Hire	AEQC	MC194957	3	1640	3	5.9	4	0.066	3	94	2	0.225	3	0.004
AC Leasing Company Inc.	Truck	TL/Dry Van	For-Hire	ACWH	MC156691	3	1640	4	8.4	5	0.086	1	74	3	0.375	5	0.008
Adams Motor Express, Inc.	Truck	TL/Dry Van	For-Hire	ADXJ	MC210014	3	1640	2	3.4	5	0.086	5	114	2	0.225	4	0.006
Aerodyne Transportation, LLC	Truck	TL/Dry Van	For-Hire	LDWY	MC161864	1	1480	1	0.9	2	0.026	1	74	1	0.075	1	0
Air Capitol Delivery & Warehouse LLC	Truck	TL/Dry Van	For-Hire	AQIR	MC389874	2	1560	2	3.4	5	0.086	3	94	2	0.225	5	0.008
Air-Land Transport Services, Inc.	Truck	TL/Dry Van	For-Hire	APVC	MC172878	1	1480	1	0.9	1	0.006	2	84	1	0.075	1	0
Alabama Motor Express, Inc.	Truck	TL/Dry Van	For-Hire	ABXN	MC325932	3	1640	1	0.9	1	0.006	3	94	1	0.075	1	0
Alan Ritchey Inc.: US Mail	Truck	TL/Dry Van	For-Hire	RIAL	MC172924	1	1480	2	3.4	2	0.026	1	74	2	0.225	2	0.002

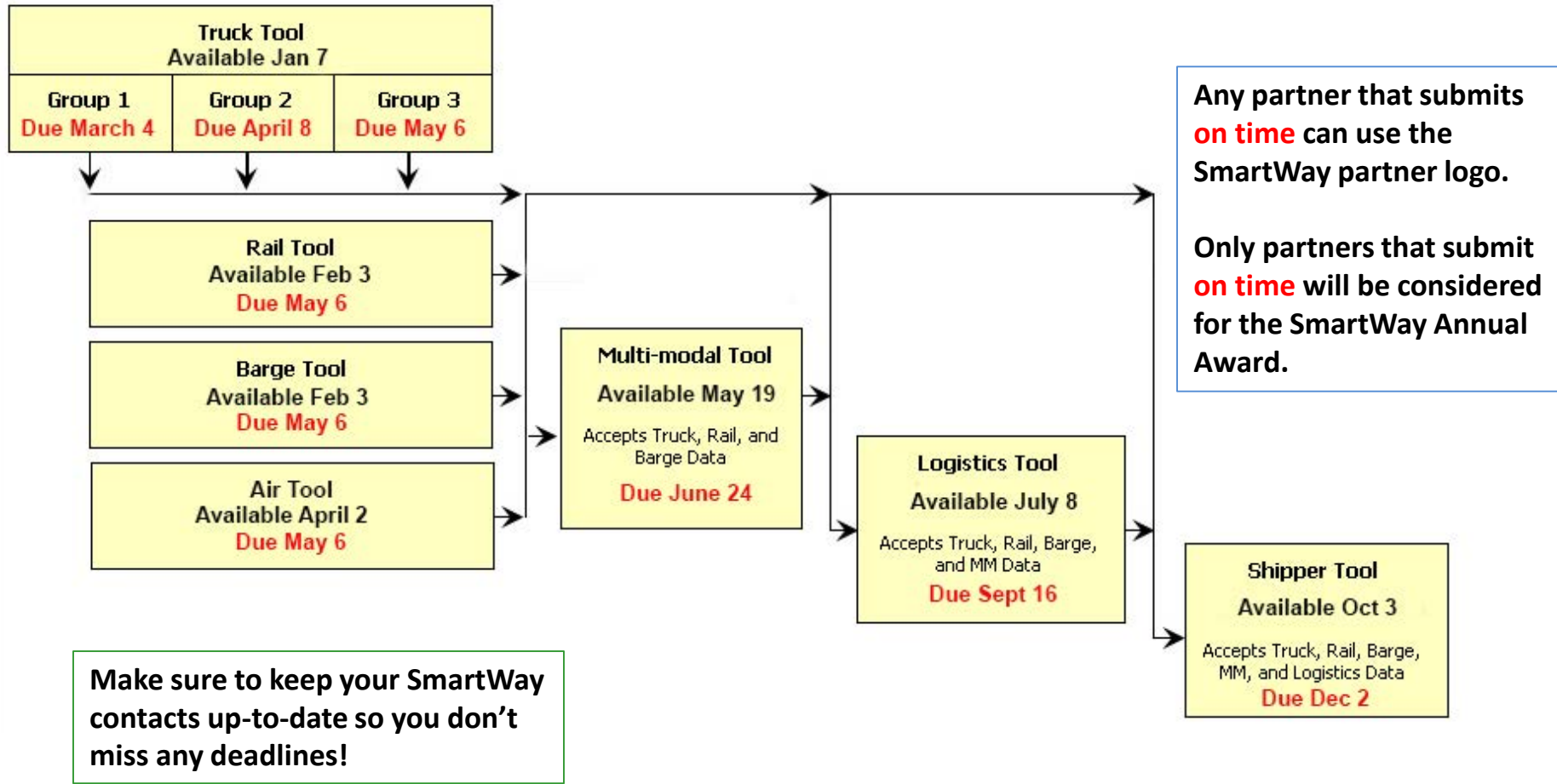
<https://www3.epa.gov/smartway/forpartners/performance.htm>



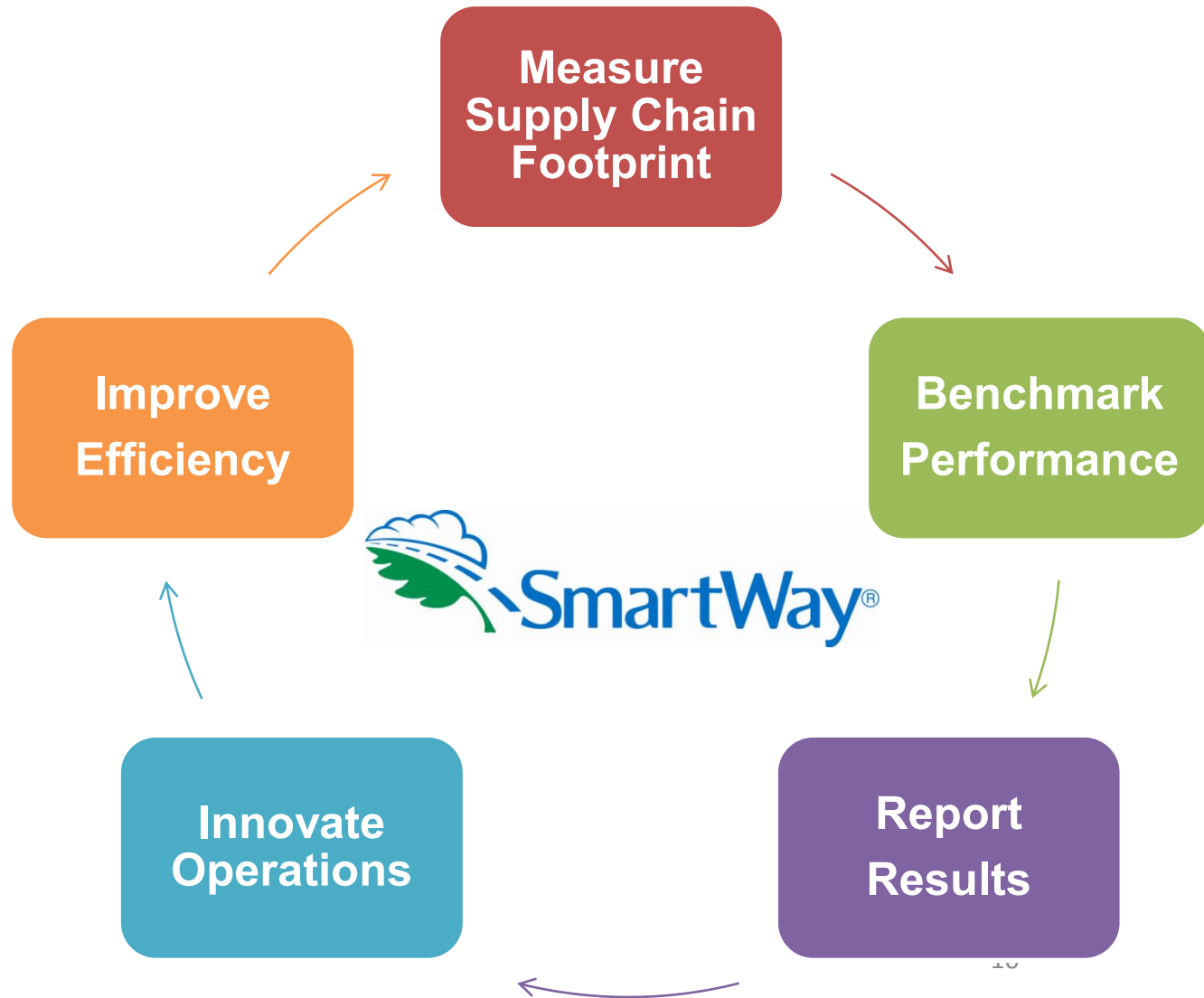
# 2016 SmartWay Schedule

## (Tool Information Flow, Availability and Due Dates)

Jan Feb Mar Apr May Jun Jul Aug Sep Oct Nov Dec



# SmartWay is continuous improvement for the Environment



# Covered Today

- Background
- **What's new this year**
- Key points to remember when filling out your tool
- Demonstrations

# What's New This Year?

- New Joining Process for **New** Partners
  - Online form to complete Steps 1 and 2
  - Applicant Status.
  - More intensive SmartWay Partner Account Manager interaction
  - <http://www3.epa.gov/smartway/forcarriers/index.htm>
- Existing Partners can now Auto-populate Steps 1, 2, and 3
  - Name, Contact Information, Fleet Description(s)
  - Truck, Logistics, Multimodal, Shipper
- Data Source Descriptions Simplified
  - Moved out of the Activity Data Screen, Replicate for different fuel types
  - **Next year** data sources will be further simplified to one data entry description (One descriptive text box)
- Fewer Screens, Less Data Entry, Less Text, Better Design
  - Allows quicker navigation to data entry screens for experienced users
  - Data Entry Streamlined and user experience enhanced
- Non-SmartWay default emission factors

# Non-SmartWay Emission Factors

- Previously SmartWay provided non-SmartWay emission factors for
  - Non-SmartWay Truck
  - Non-SmartWay Barge
  - Non-SmartWay Logistics
  - Non-SmartWay Multimodal
- This year SmartWay also provides:
  - **Non-SmartWay Truck by category (Flatbed, LTL, Tanker...)**
  - **Non-SmartWay Air**
- Non-SmartWay default emission factors are now based on a hypothetical SmartWay bin 6 calculation in each SmartWay category, rather than a 95<sup>th</sup> percentile overall.
- This methodology allows SmartWay to display default numbers for non-SmartWay that do not disbenefit members, while still providing a reasonable number for Shippers with a lot of non-SmartWay carriers that are attempting to determine their carbon footprint.

# SmartWay: You are part of a Global Movement



We will be working actively with Mexico this year to complete an integrated US-Canada-Mexico SmartWay North American System.

# What's the Same This Year?

- Multimodal partners do not have Bin ranking numbers displayed
  - No Bin 1,2,3,4 or 5
  - Simply the Bin emission factor
  - Why? Simply hard to compare disparate types of multimodal operation
- We are still looking for input on how to best rank and/or display multimodal carriers for benchmarking and award purposes.
  - Please feel free to contact me directly ([payne.matthew@epa.gov](mailto:payne.matthew@epa.gov))

# Covered Today

- **Background**
- **What's new this year**
- **Key points to remember when filling out your tool**
- **Demonstration**



# KEY points to Remember

## When completing the MM Tool

- The reason a Multimodal tool exists is because you have different fleet types that are **combined** to provide service to your customers.
- Example 1: Not Multimodal for SmartWay
  - Company X has a truck fleet and a logistics fleet. Customers hire either the truck fleet or the logistics fleet. Company X can submit a Truck Tool and a Logistics Tool.
- Example 2: Multimodal for SmartWay
  - Company Y has a truck fleet and a logistics fleet. Customers hire Company Y and don't know whether they are getting Company Y's truck or logistics fleet. Company Y must submit a multimodal tool.
- Example 3: Multimodal for SmartWay
  - Company Z has a several truck fleets, a logistics operation, and hires rail and air service. They offer two service offerings to their customers: expedited which is composed of air and some truck and some logistics fleets, and standard which includes rail, and some truck and logistics. Company Z should submit a multimodal tool.

# KEY points to Remember

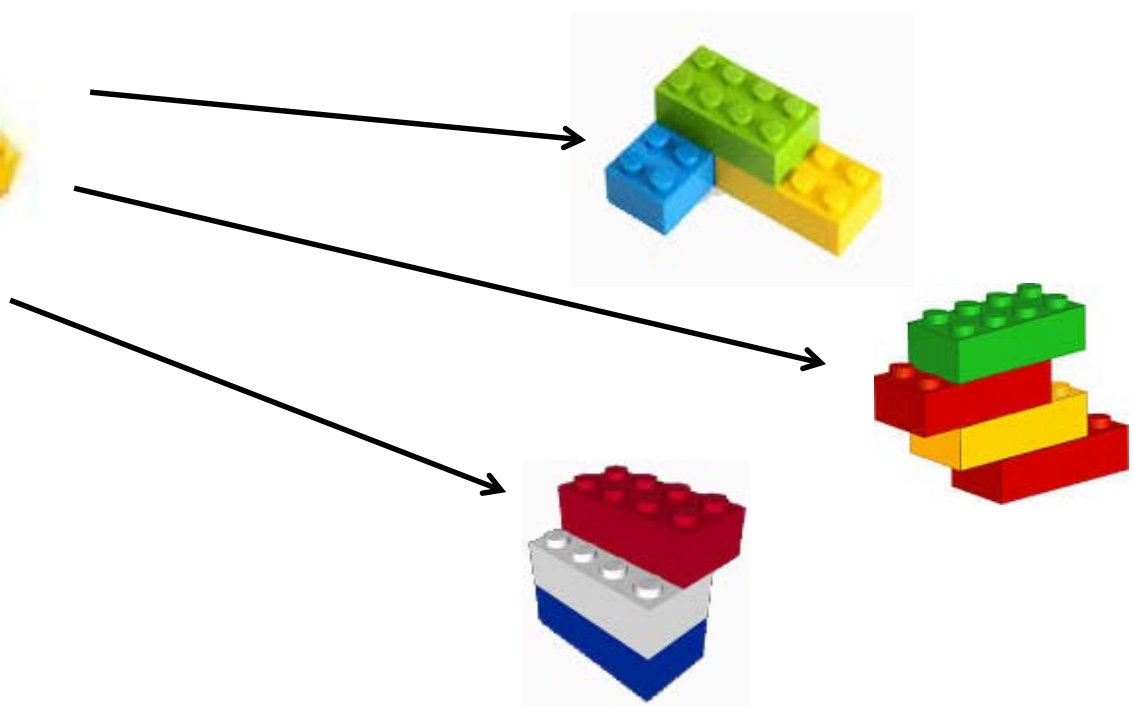
## Component vs. Composite

### Component Fleets

- Internal to your company
- Invisible to outsiders

### Composite Fleets

- What people who hire you see
- Often composed of parts of component fleets
- You build your composite out of your components



# KEY points to Remember

## When completing the MM Tool

- Only complete the Rail, Barge or Air Tool in MM if you **own/control the** vehicles and move the freight yourself
  - The majority of companies will simply put their hired rail, barge and air freight in a logistics tool like last year.
- Include your U.S. and Canadian freight
  - Canada is participating in SmartWay and has a Canadian version of the program/tools identical to the US. (except in metric and French)
  - Partners submit only one tool to the US or Canada
    - (Unless you want two distinct companies listed. E.g. ABC, ABC Canada)
- Note that Barge is providing actual emission data, truck is providing data in 1 of 5 ranges, and rail is only providing a rail industry modal average.
- Just because you complete a Multi Modal tool does not mean your composite fleets will be labeled Multi Modal in the carrier data file!
  - For example: If one of your composite fleets is over 91% truck (less than 10% other modes) it will be classified as a Truck fleet and not a Multi Modal fleet.

# Please...

- Pay attention to SmartWay emails.
- Make sure your email filters don't treat our emails like spam.
- Have a current SmartWay contact in your organization and ensure continuity of operations if you leave your position.
- Have a backup person in your organization in the event you leave or are promoted.
- Save your SmartWay work in a designated folder, preferably on a share drive and/or have a backup.
- Save your work often, --for extra safety under version names
- Use SmartWay for benchmarking and Improvement.
- Please send BOTH .xlsm and .xml files to your Partner Account Manager if you can
- If you have a question- don't hesitate: ask your Partner Account Manager.
- Know who your Partner Account Manager is!



# Covered Today

- **Background**
- **What's new this year**
- **Key points to remember when filling out your tool**
- **Demonstration**