

Application of SMOKE-MOVES Integration Tool to Regional Air Quality Modeling

Huiyan Yang*

Northeast States for Coordinated Air Use Management

EPA MOVES Workshop

Ann Arbor, Michigan

June 15, 2011

*** Now at the University of Texas at El Paso**

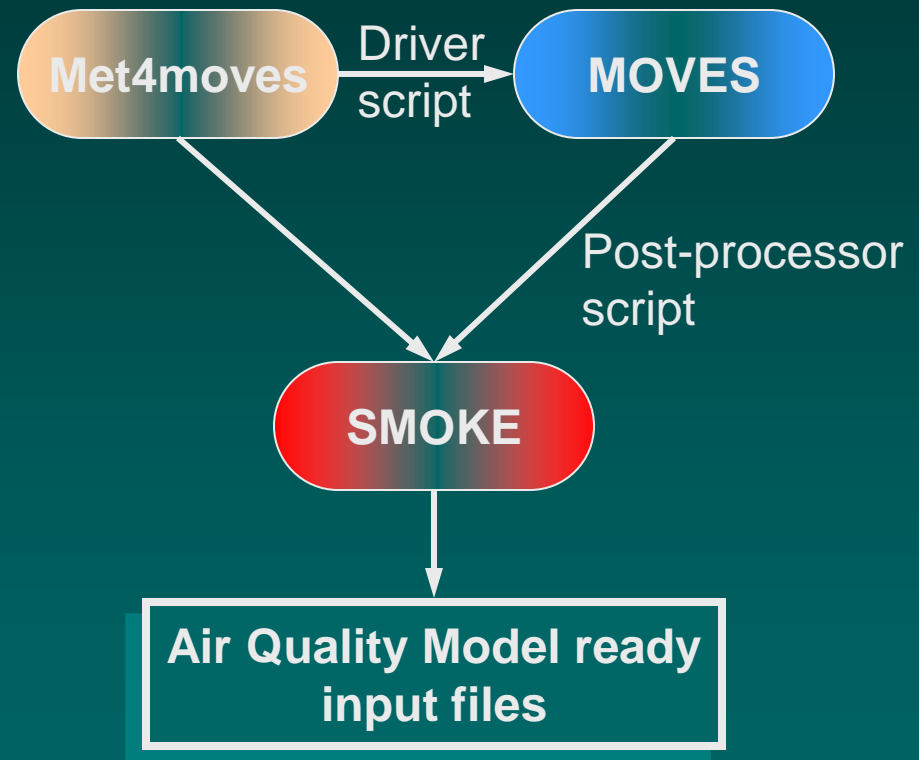
Outline

- **Reasons to Choose the MOVES Lookup Table Approach**
- **Development of MOVES Inputs**
- **Set up MOVES Lookup Table Runs**
- **Post Processing of MOVES Lookup Tables and SMOKE Processing**
- **Acknowledgements**

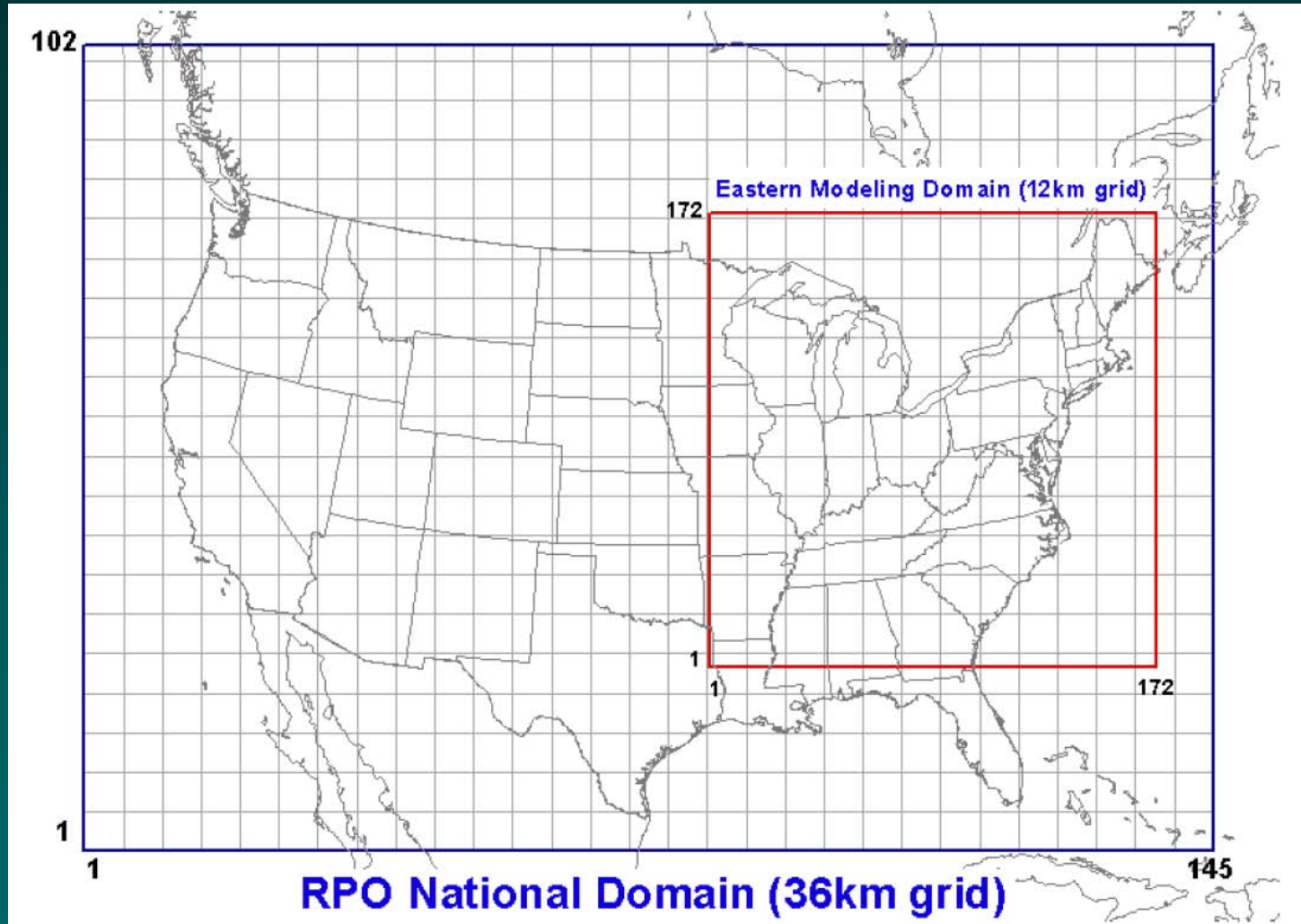
Reasons to Choose the MOVES Lookup Table Approach

SMOKE-MOVES Integration Tool

- ◆ Met4MOVES is the meteorological data preprocessor
- ◆ MOVES is run to create emissions factors
- ◆ SMOKE processing applies the emission factors to the activity data to compute grid-cell emissions



CMAQ Modeling Domain for MANE-VU States



Development of MOVES Inputs

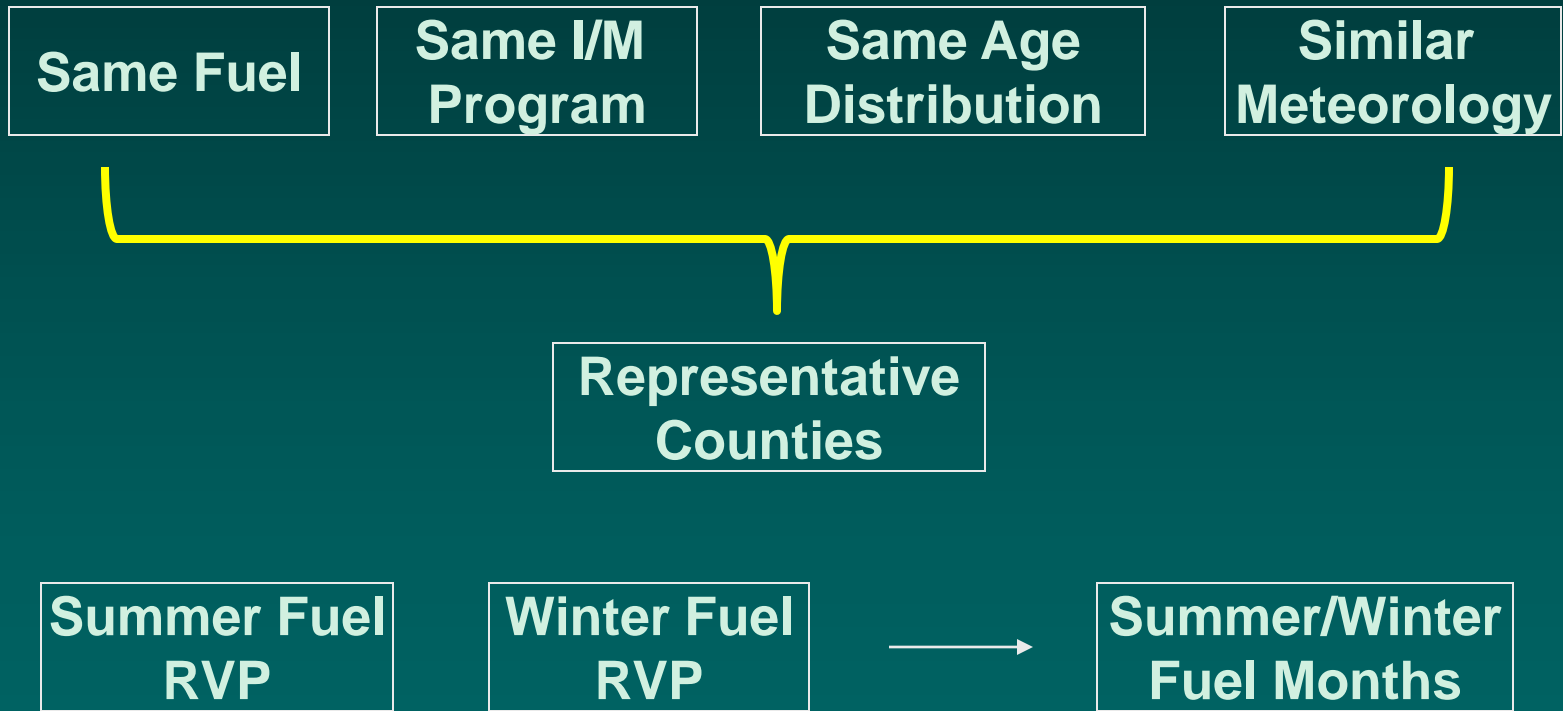
Collect MOVES Inputs from States

Vehicle Population (VPOP), Vehicle Age Distribution
Vehicle Miles Traveled (VMT), Road Type Distribution
Average Speed Distribution
Fuel Supply, Fuel Formulation
I/M Coverage
Month VMT Fraction, Day VMT Fraction, Hour VMT Fraction
Ramp Fraction
Meteorology

State Supplements

Input Summary (required)
early NLEV and/or Cal LEV
Stage II control efficiencies

Select Representative Counties and Fuel Months



State Experiences in MOVES Inputs Development

Development of MOVES Vehicle Population (VPOP): Maryland

- ◆ **Data Source: Maryland Motor Vehicle Administration (MVA)**
- ◆ **Extract from MVA databases 5 vehicle types**
 - MOVES vehicle types 11 (Motor Cycle), 21 (Passenger Car), and 43 (School Bus)
 - MOVES Bus types 41 (Inter-City) and 42 (Transit) were extracted together as a sum and later split into 41 and 42 according to MOVES default splits
- ◆ **Split from the total of the rest vehicle populations into 8 MOVES vehicle types**
 - MOVES default splits are used
 - MOVES truck types 31 (Passenger), 32 (Light Commercial), 51 (Refuse), 52 (Single Unit Short-haul), 53 (Single Unit Long-haul), 54 (Motor Home), 61 (Combo Unit Short-haul), and 62 (Combo Unit Long-haul)

Development of MOVES Vehicle Population (VPOP): Georgia

- ◆ **Data Source: Polk's Vehicle registration databases**
 - Used to develop age distribution
 - Derived from VIN
 - Vehicles counts by 16 Mobile6 vehicle classes, county and age
- ◆ **Convert from 16 Mobile6 vehicle classes to 13 MOVES vehicles classes (MOVES runs)**
 - Adapt from registrationdistributionconverter_veh16.xls
 - M6VType16 → M6Vtype32 → VClass28 → SourceType13
- ◆ **Convert from 16 Mobile6 vehicle classes to 12 SCC (for SMOKE processing)**
 - M6VType16 → M6Vtype32 → VClass28 → VType12

Development of MOVES

Vehicle Miles Traveled (VMT): Georgia

◆ Data source

- VMT by 12 HPMS road types and county from Georgia DOT
- VMT mix by 28 vehicle classes from Mobile6 runs with local age distribution

◆ Convert to MOVES format

- VMT converter (vmt-converter-road-veh28-20100209)
- Automate the process for 159 counties in Georgia using Macro written in VBA
 - ◆ Inputs: VMT by 12 HPMS road types in 159 counties, VMT mix
 - ◆ Outputs: VMT in MOVES format, one file per county in csv format

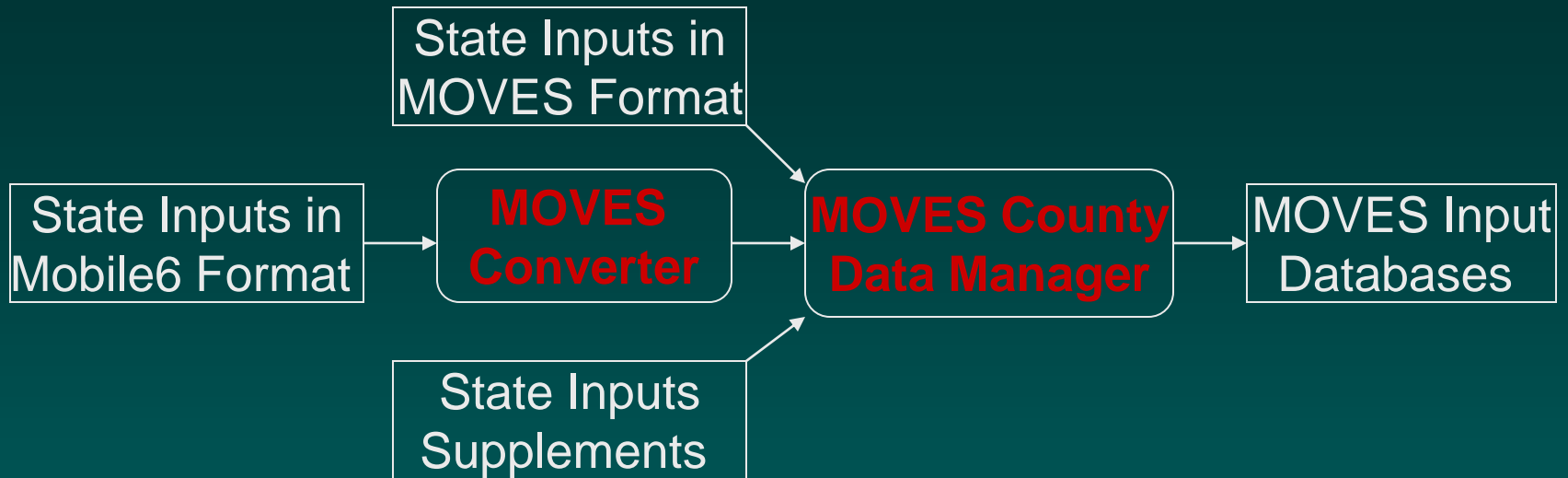
Development of MOVES Inputs for SMOKE Processing

Develop Meteorology for Representative Counties (simplified)



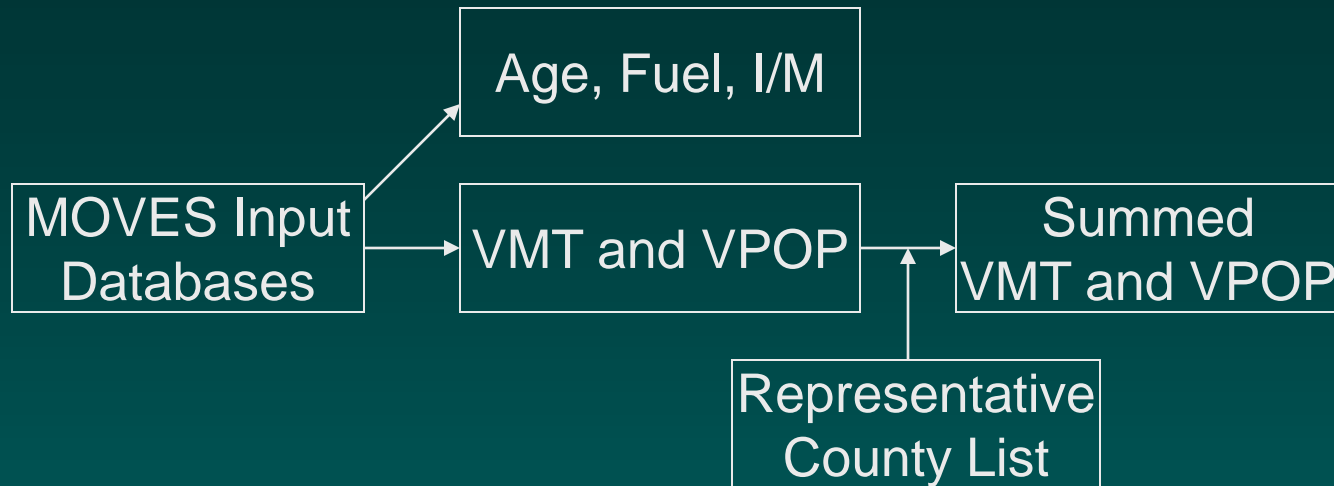
| | |
|---------------|--|
| Input Data | WRF/MCIP meteorology |
| | Representative county file |
| | Fuel month file |
| Input Scripts | SMOKE ancillary files |
| | SMOKE assign file |
| | SMOKE run script |
| Tools | SMOKE2.7 met4moves |
| Outputs | Met files for MOVES and SMOKE Processing |

Build up MOVES Input Databases



| | |
|---------------|---|
| Input Data | State inputs in MOVES format |
| | State inputs in Mobile6 format (fuel and IM are in MOVES format) |
| | State input supplements (exported from MOVES2010a default database) |
| Input Scripts | MOVES xml importing files for MOVES County Data Manager |
| | MOVES Run Scripts for MOVES County Data Manager |
| Tools | MOVES Converter |
| | MOVES County Data Manager invoked in batch mode |
| Outputs | MOVES input databases |

Develop MOVES Inputs for Representative Counties



| | |
|------------|---|
| Input Data | MOVES input databases |
| | Representative County list |
| Tools | MySQL scripts |
| Outputs | Vehicle Age Distribution, Fuel, and I/M csv files for representative counties |
| | VMT and VPOP for all counties |
| | Summed VMT and VPOP for representative counties |

Run MOVES Inventory Mode to Convert VMT and VPOP to SCC Format for SMOKE Processing

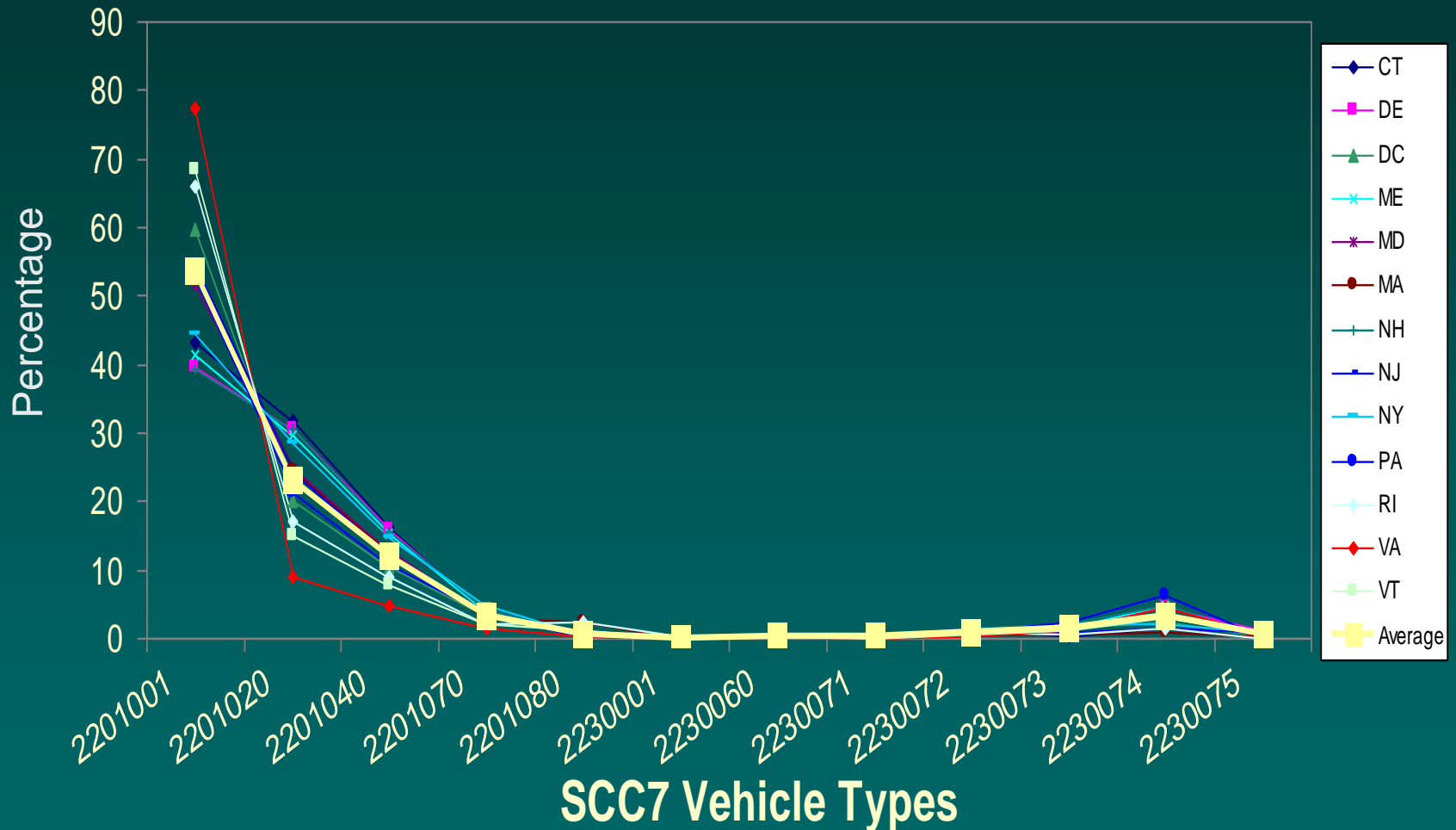


| | |
|---------------|----------------------------------|
| Input Data | MOVES input databases |
| Input Scripts | MOVES RunSpec files |
| | MOVES run scripts |
| Tools | MOVES2010a invoked in batch mode |
| Outputs | MOVES output databases |
| | SMOKE SCC VMT and VPOP |

Some Thoughts on Quality Assurance of MOVES Inputs

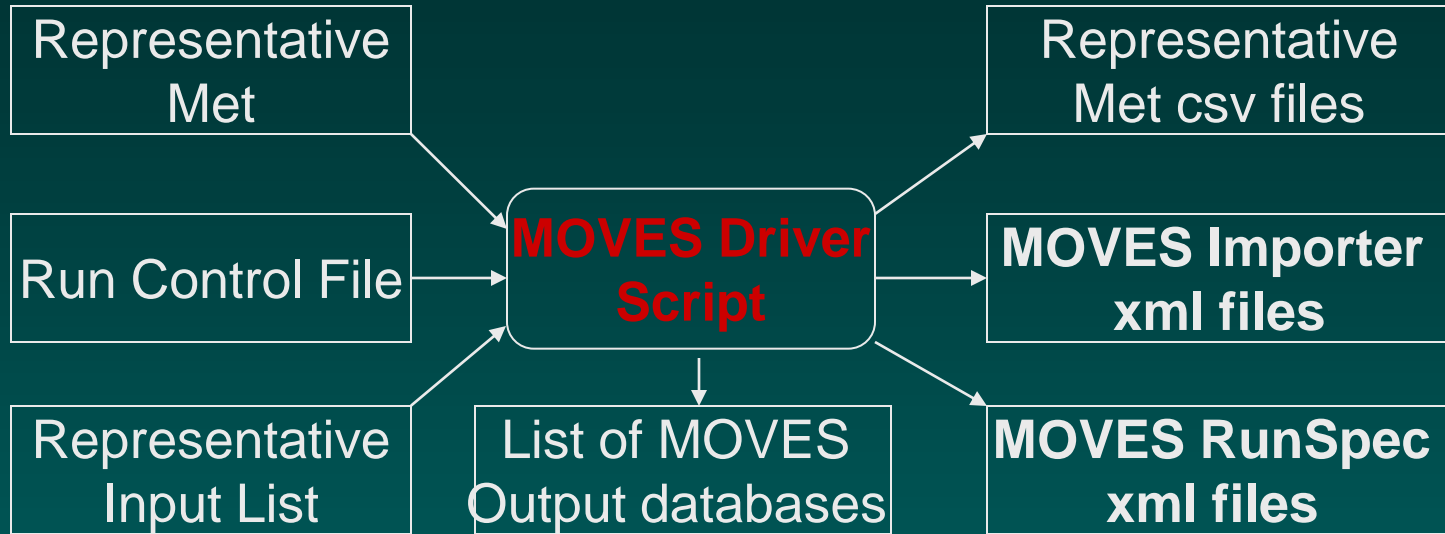
- ◆ Follow the county-based input organization scheme and naming convention
- ◆ Build up MOVES input databases to ensure format correctness
- ◆ Cross check input tables to ensure data integrity
- ◆ Compare with other states to discover potential inconsistencies
- ◆ Compare with other years to ensure compatible trend

Quality Assurance of MOVES Inputs: VMT Percentages



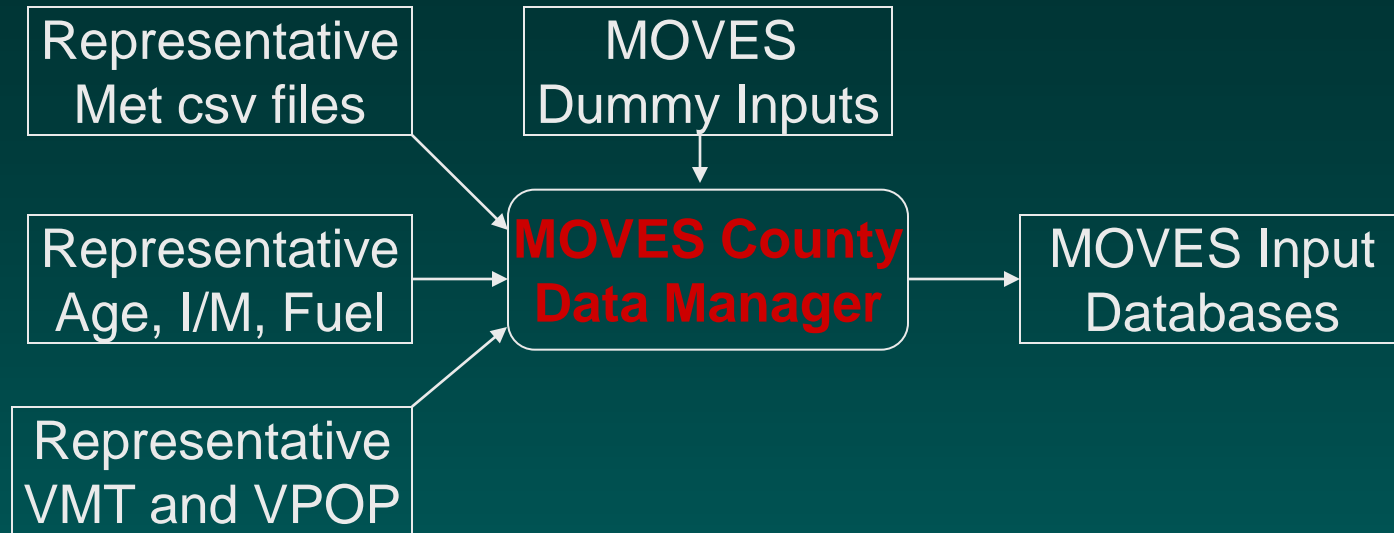
Set Up MOVES Lookup Table Runs

Run MOVES Driver Script



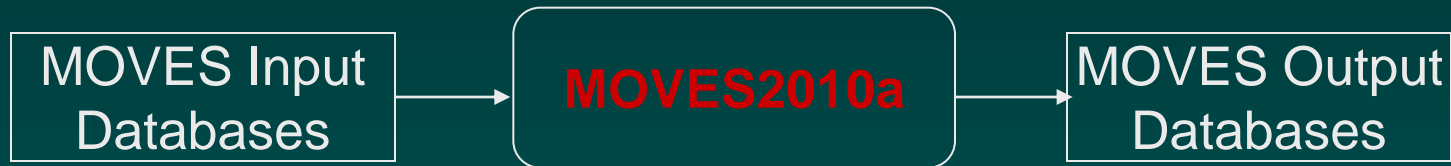
| | |
|---------------|--|
| Input Data | Representative County Met generated by met4moves |
| Input Scripts | Run Control File |
| | Reference County input list file |
| Tools | MOVES Driver Script |
| Outputs | MOVES representative met csv files |
| | MOVES Importer xml files and batch run script |
| | MOVES RunSpec xml files and batch run script |
| | List of MOVES output databases |

Run MOVES Importer



| | |
|---------------|--|
| Input Data | Representative County Met generated by met4moves |
| | Representative County Age, I/M, and Fuel |
| | Representative County summed VMT and VPOP |
| | MOVES dummy inputs |
| Input Scripts | MOVES Importer xml files and batch run script generated by MOVES driver script |
| Tools | MOVES County Data Manager |
| Outputs | MOVES input databases |

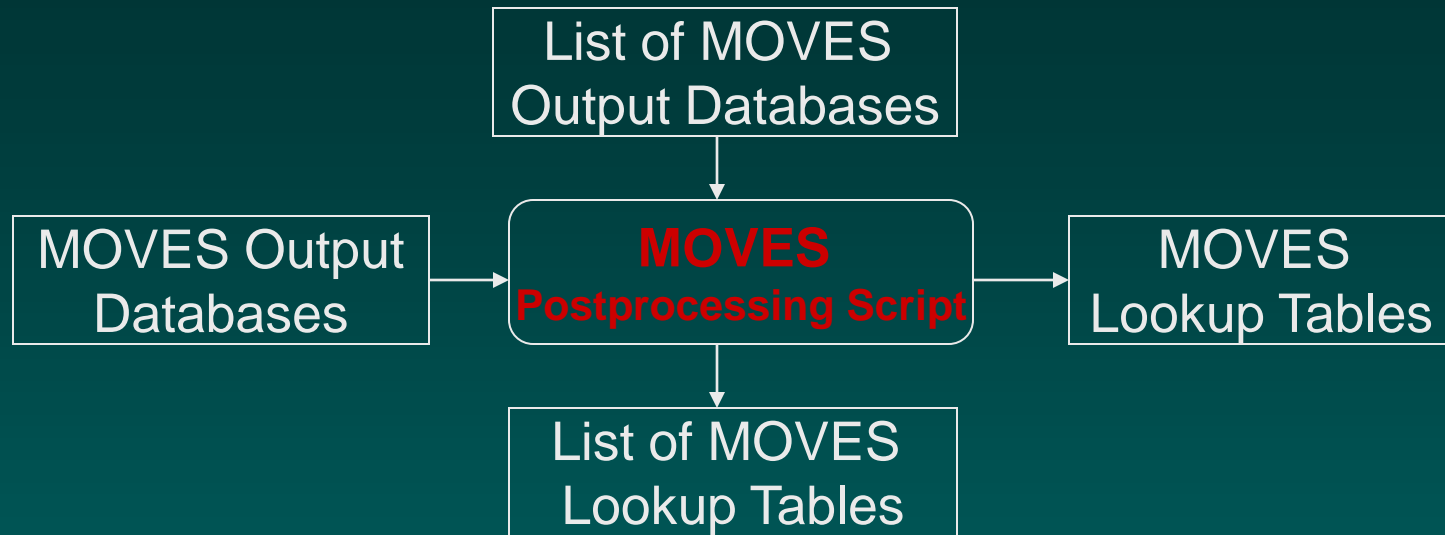
Run MOVES Lookup Tables



| | |
|---------------|---|
| Input Data | MOVES Input Databases for Representative Counties |
| Input Scripts | MOVES RunSpec xml files and batch run script generated by MOVES driver script |
| Tools | MOVES2010a |
| Outputs | MOVES output databases |

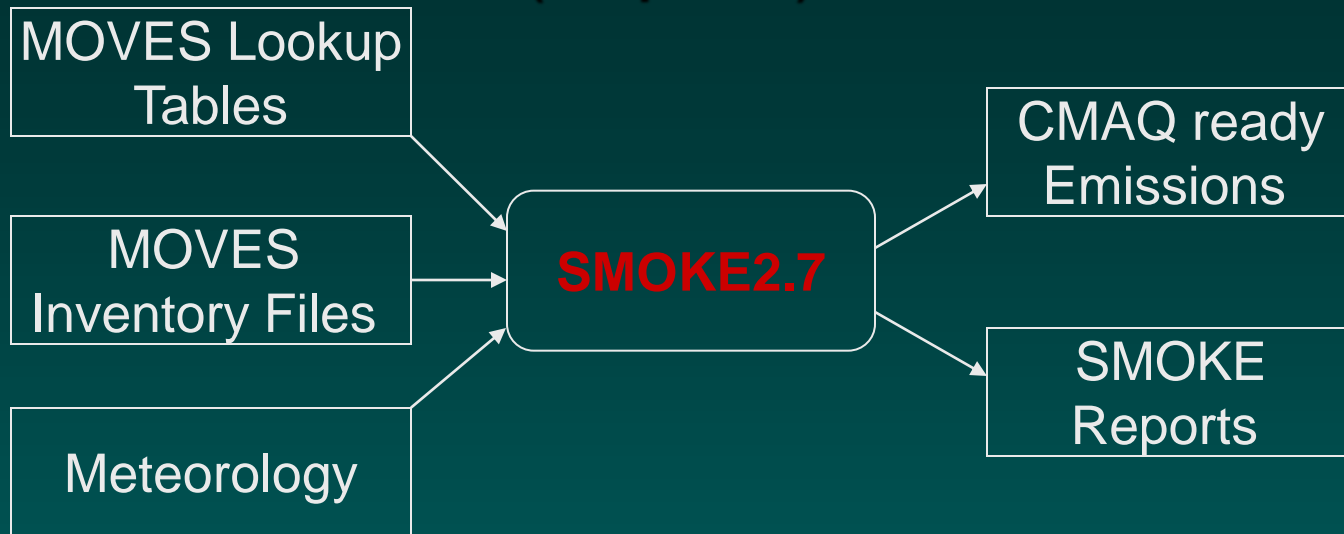
Post Processing of MOVES Lookup Tables and SMOKE Processing

Postprocessing of MOVES Lookup Tables



| | |
|---------------|---|
| Input Data | MOVES output databases |
| Input Scripts | List of MOVES output databases generated by MOVES driver script |
| Tools | MOVES Postprocessing Script |
| Outputs | MOVES lookup table csv files ready for SMOKE |
| | List of MOVES lookup table csv files for SMOKE |

SMOKE Processing of MOVES Lookup Tables (simplified)



| | |
|---------------|--|
| Input Data | MOVES lookup tables (emission factors) |
| | MOVES inventory files (activity data) |
| | WRF/MCIP and SMOKE met4moves meteorology |
| Input Scripts | SMOKE ancillary files |
| | SMOKE assign files |
| | SMOKE run scripts |
| Tools | SMOKE2.7 |
| Outputs | CMAQ ready emissions and SMOKE reports |

State Experiences in SMOKE- MOVES Processing

SMOKE-MOVES Processing: New York

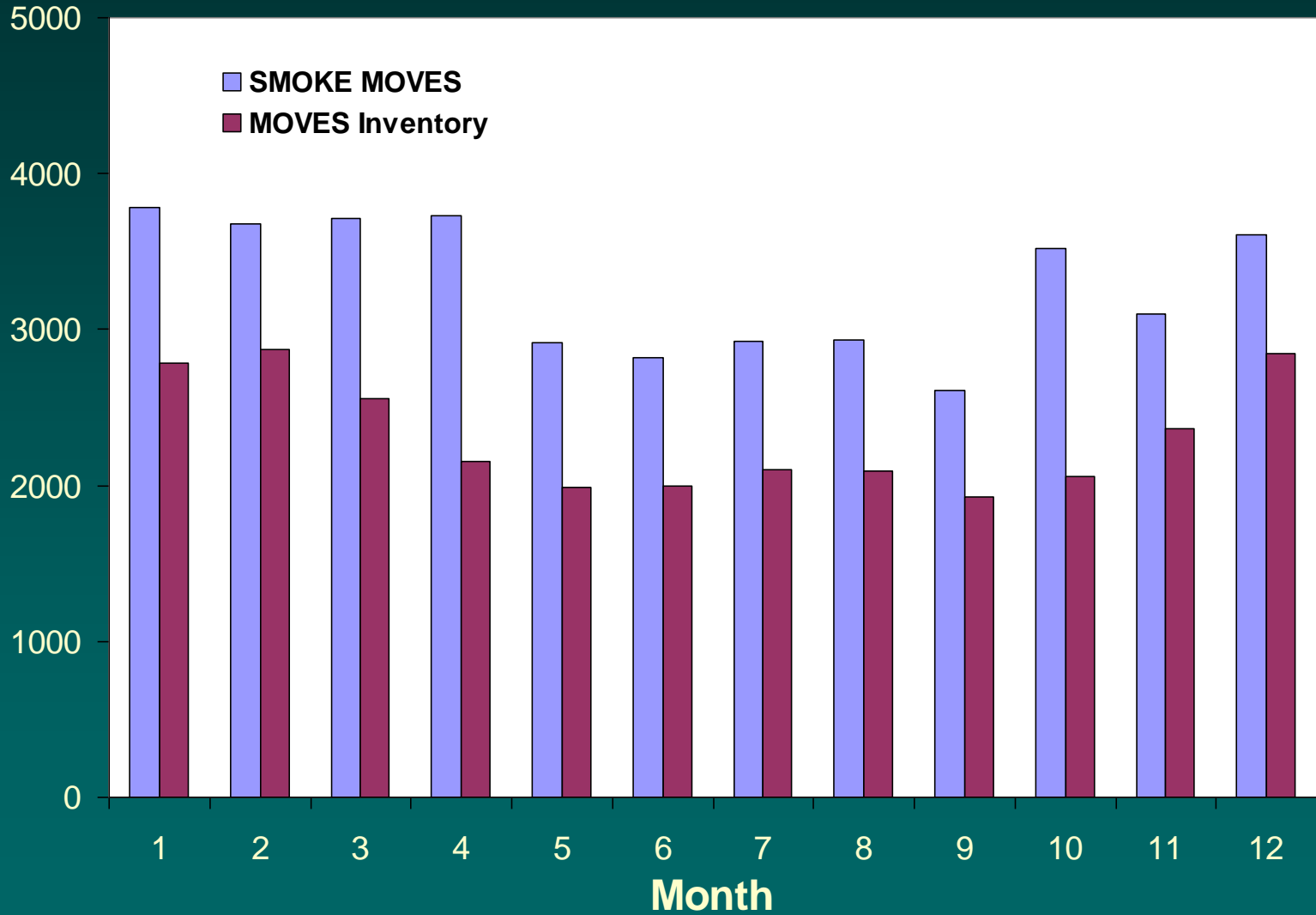
- ◆ **Regional modeling centers at VA, PA, NY, and NESCAUM provided MOVES lookup tables and SMOKE inventories and other state specific ancillary files**
- ◆ **New York merged regional files and set up the SMOKE modeling platform**
- ◆ **New York ran 7 ozone months; VA and NESCAUM ran 5 winter months**
 - The latest SMOKE2.7.5b improved processing speed dramatically. New York processed the whole year in about two days on a cluster with 8 CPUs.

SMOKE Postprocessing: Virginia

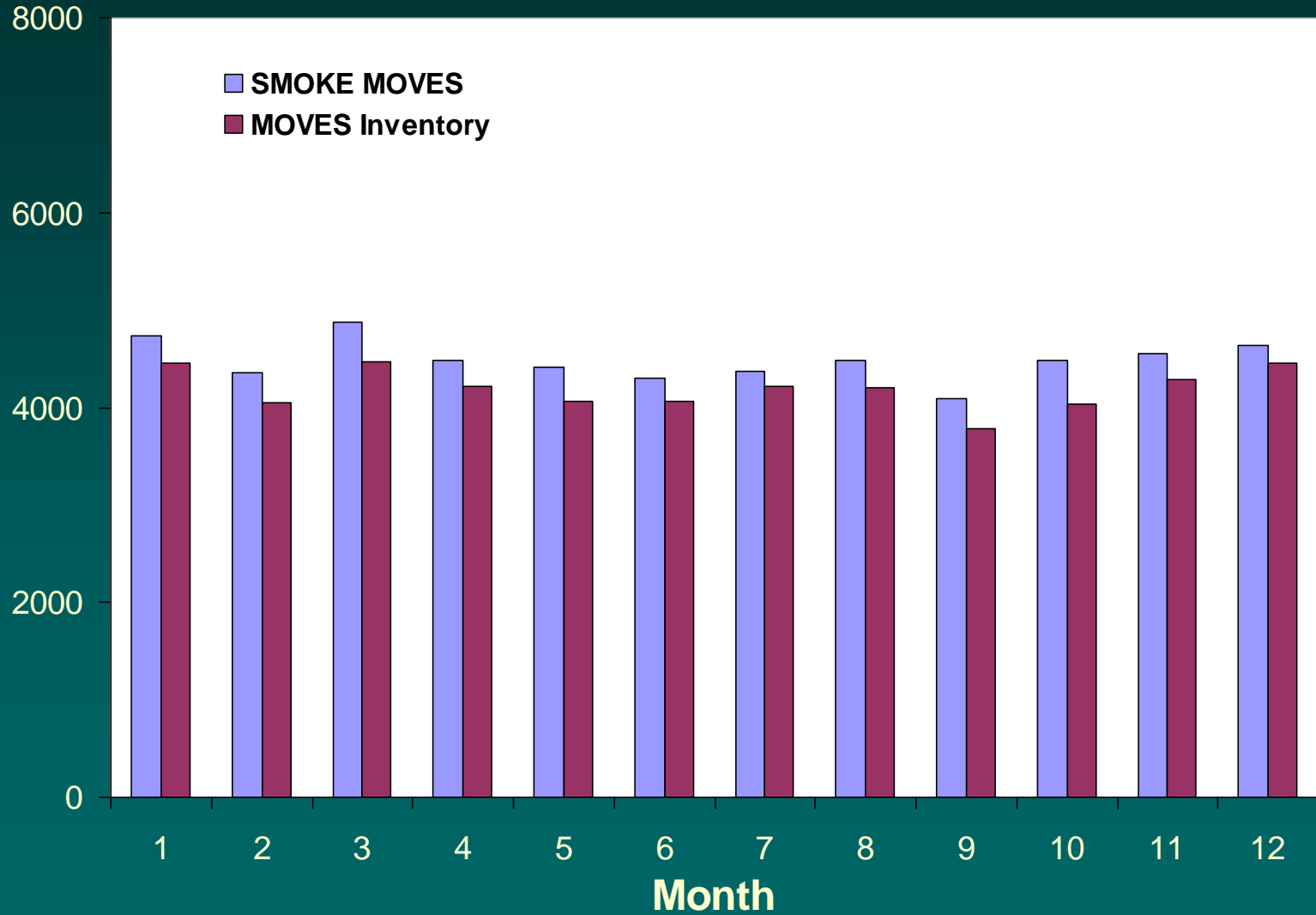
- ◆ Perl script was developed to postprocess SMOKE daily reports to csv summaries
- ◆ Criteria emissions were summarized at the state and county levels for each month
- ◆ County SCC emissions for criteria pollutants were summarized for each month

**Preliminary Analysis of Onroad
Emissions Generated by
SMOKE MOVES**

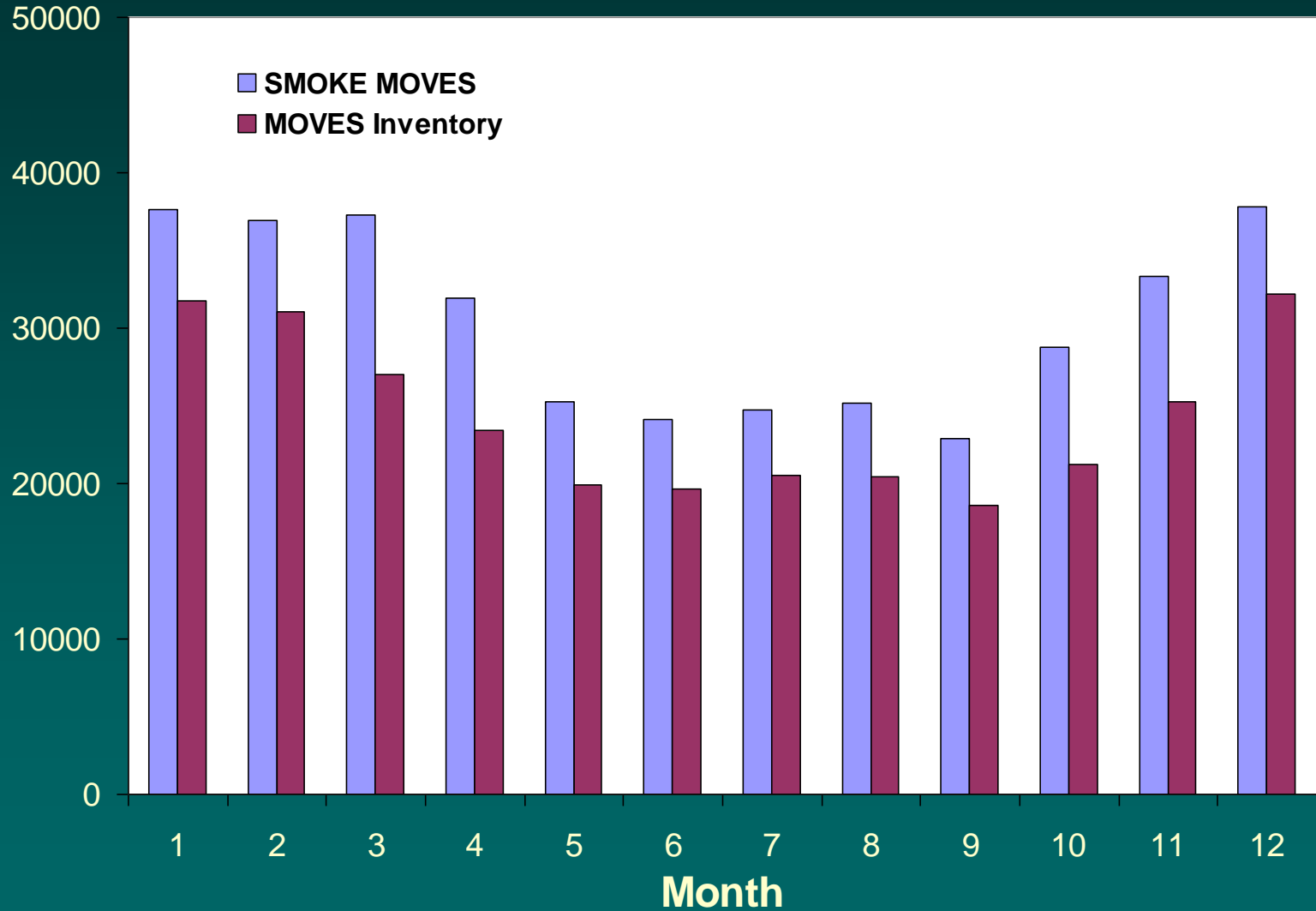
CT 2007 Onroad VOC Emissions (Tons)



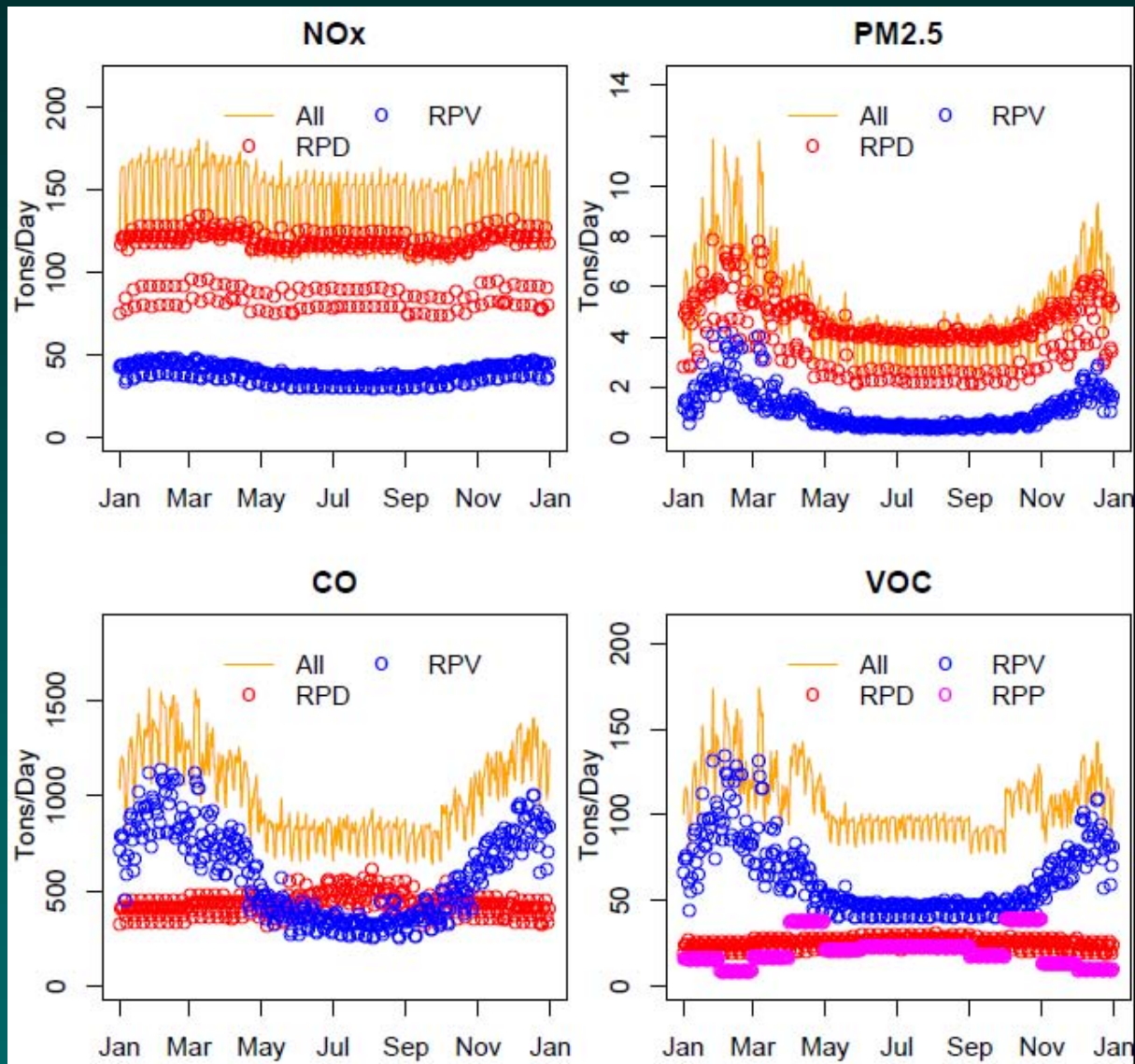
CT 2007 Onroad NOx Emissions (Tons)



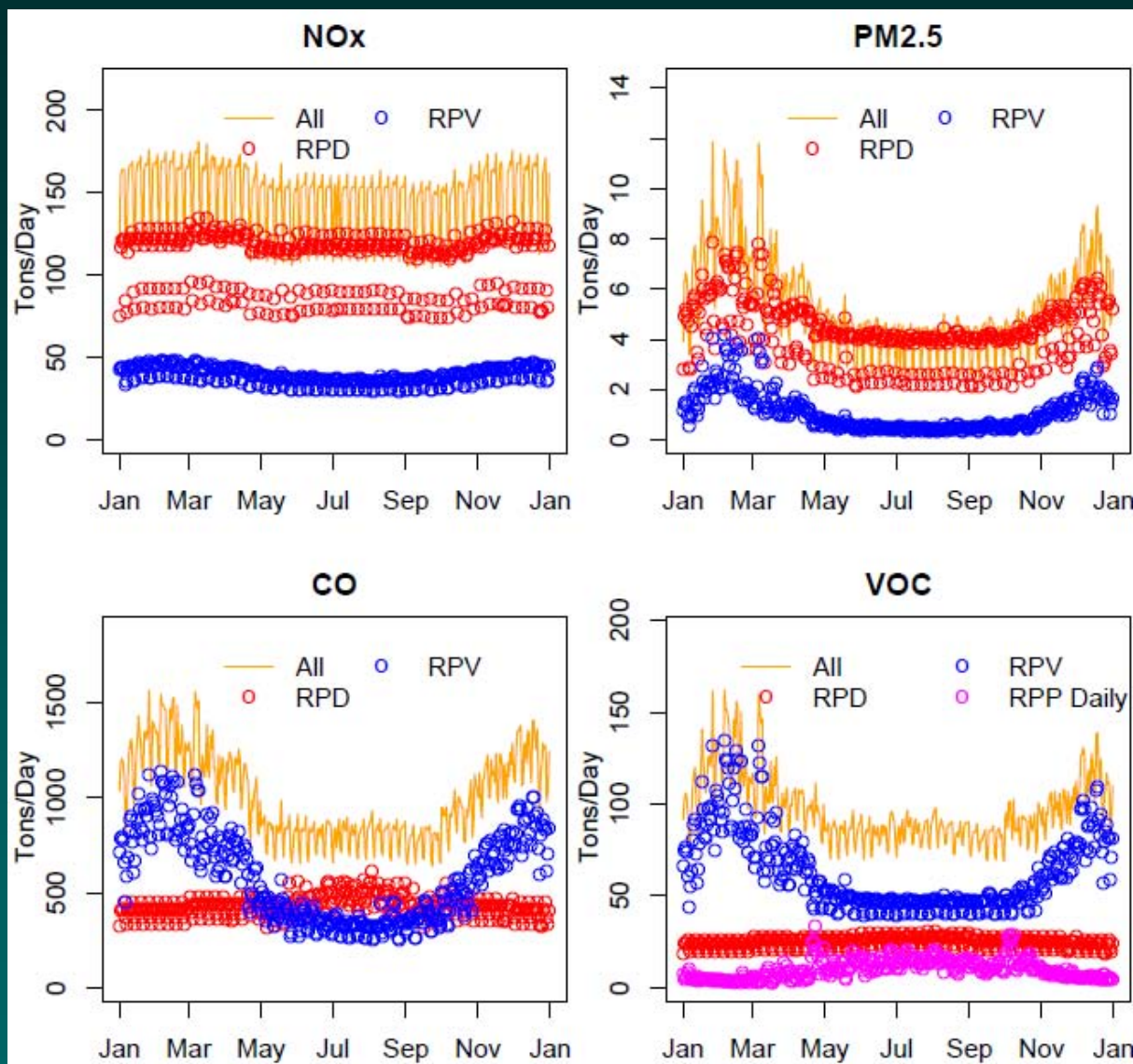
CT 2007 Onroad CO Emissions (Tons)



CT 2007 Daily Emissions from SMOKE (Tons)



CT 2007 Daily Emissions from SMOKE (Tons)



Acknowledgements