



# USEPA Brownfield Program

## USEPA Brownfield Program

What are Brownfields and Are You Ready to Take Them On?





# What are Brownfields?

“...real property, the expansion, redevelopment or reuse of which may be complicated by the presence or potential presence of a hazardous substance, pollutant, or contaminant.”



- Blighted, abandoned, derelict property
- Contaminated property
- Property that everyone believes is contaminated
- Fear of environmental liability



# What Else are Brownfields?



- A Diamond in the Rough:
  - An economic engine
  - A jobs magnet
  - A new community gateway
  - A public gathering spot

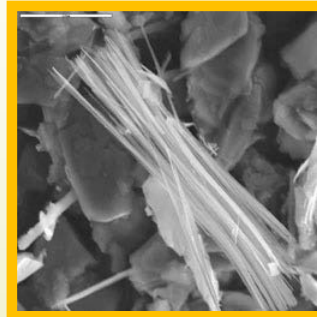


# EPA's Investment in Brownfield Grants

- Since 1995, EPA has awarded 3,154 Brownfields grants totaling more than \$920.6M. This has helped:
  - Assess more than 24,348 properties.
  - Leverage more than \$23.3 billion in brownfields cleanup and redevelopment funding from the private and public sectors.
  - Generate more than 109,787 jobs.
  - Make more than 55,762 acres ready for reuse.
  - *\$1 in Brownfields Grants leverages \$18 in private investment (current data)*
  - *Can increase property values 5 -13% near Brownfield sites when cleanup is complete.*



# What can be addressed?



- Hazardous Substances
- Petroleum Contamination
- Asbestos & Lead Based Paint are eligible
- Controlled Substances (e.g., Meth labs)
- Mine-Scarred Lands
- Other environmental contaminants



# Brownfield Grant Types (2-5 years duration)

## Brownfield Grant Types (2-5 years duration)

1. Assessment (\$400k max or \$5-600k for coalitions)
2. Revolving Loan Fund (RLF) (\$1M)
3. Cleanup (\$200k per parcel)
4. Environmental Workforce  
Development and Job Training (\$200k)
5. Area-Wide Planning (\$200k)
  
6. Also Available:
  - a. Targeted Brownfields Assessments (not a grant)
  - b. Technical Assistance to Brownfields (TAB)
  - c. ADEM's RLF and 128(a) grant



# Who can apply?

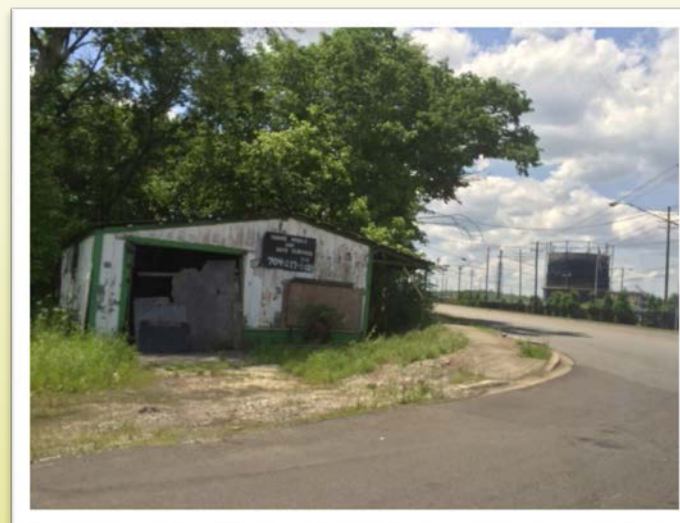
- **Local Governments**
- Land Clearance Authorities/Quasi-Governmental Entities Under Local Governmental Control
- State Legislated Government Entities
- **Regional Councils of Government or Group of Local Governments**
- Redevelopment Agency (State Chartered/Sanctioned)
- States
- Tribes
- **Nonprofits (Cleanup, Area-wide Planning & Job Training)**



# 1. Assessment Grant Program

**To inventory, characterize, assess, and conduct planning and community involvement related to Brownfield sites.**

- Community-wide
- Site-specific (single site)
- Assessment Coalition Grants







# Assessment Applicant Options

An applicant applying for an assessment grant can do the following combinations:

- up to 3 grant proposals (2 community-wide not to exceed \$400k and 1 site-specific not to exceed \$350k) OR
- 1 grant as part of a coalition not to exceed \$500K if not applying for individual assessment funds

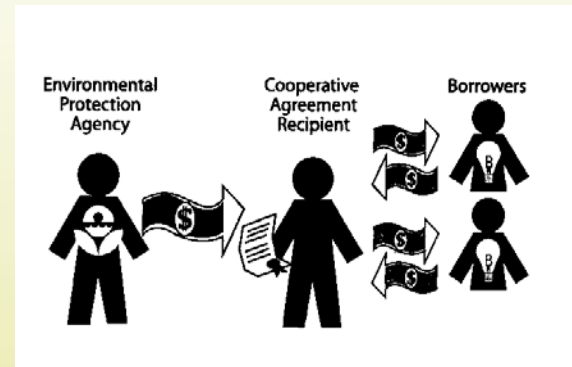
| Community Wide   | Site Specific  | Coalitions   |
|--|--|--|
| Up to \$200,000 for hazardous substances <i>and</i> \$200,000 for petroleum addressing the same community. | Up to \$200,000 for petroleum <i>or</i> hazardous substances (comingled) | Up to \$600,000 per coalition.<br><i>Coalition Members can <b>NOT</b> apply for individual assessment funding.</i> |
|  | May request a waiver for up to \$350,000                                 |  |
| Maximum Combined Amount \$400,000  | Maximum Amount \$350,000   | Maximum Amount \$600,000   |



## 2. Revolving Loan Fund Grant Program

To make low interest loans to carry out cleanup activities at brownfields properties

- Up to \$1M per eligible entity
- Coalitions may apply
- (Minimum) 50% loans
- (Maximum) 50%-cleanup subgrants (may request a waiver post-award)
- Cost share requirement of 20%
- Nonprofit organizations are not eligible to apply (they may be a sub-grantee)





## 3. Cleanup Grant Program

### To carry out cleanup activities at Brownfield sites

- Up to \$200K per property
- **Must own site at time of application**
- Hazardous substances or petroleum contamination
- May apply for up to 3 properties: Separate proposals for each property
- Non-profits may apply
- Cost share requirement of 20% (May request a hardship waiver)
- Phase II and analysis of cleanup alternatives must be completed





## 4. Area-Wide Planning

- Create area-wide strategies for assessment, cleanup and reuse
- Facilitate cleanup of Brownfield properties
- Identify potential future uses of Brownfield properties
- Identify next steps and resources to implement plan
- \$200,000
- 2 years



## 5. Job Training Program

- To provide full-time, sustainable employment in various aspects of environmental cleanup
- Targets unemployed and underemployed individuals
- 3 Year Grants
- \$200,000





## 6a. Targeted Brownfields Assessments

EPA performs work using contractor resources

- Phase I ESA
- Phase II ESA
- Cleanup options and cost estimates
- Requester must secure site access





## 6b. Technical Assistance to Brownfields (TAB)

### **Center for Creative Land Recycling (CCLR)**

[www.epa.gov/brownfields/pubs/cclr-fact-sheet3-21-13.pdf](http://www.epa.gov/brownfields/pubs/cclr-fact-sheet3-21-13.pdf)

Sarah Sieloff 415-398-1080 Sarah.sieloff@cclr.org

[www.CCLR.org](http://www.CCLR.org)

Also, on-line grant writing tool available:

**Kansas State University (KSU) (Online Tabez tool)**

<https://www.ksutab.org/tools/tabez/learnmore>



## 6b. Support Tools: CDEFA and GroundworksUSA

- Council of Development Finance Agencies: provides - education, resources, research and networking on financing tools available for redevelopment finance.
- 6 program offerings: 1) Newsletter 2) Webinar Series 3) Resource Center 4) Project Marketplace 5) Toolkit 6) Project Response Teams
- GroundworksUSA: designed to help communities integrate environmental justice and equitable development best practices into their brownfields redevelopment planning.





# EPA Region IV Grant Applications

| 2013   |       |             | 2014  |             | 2015  |             | 2016  |             |
|--------|-------|-------------|-------|-------------|-------|-------------|-------|-------------|
| Ranked | State | # Submitted | State | # Submitted | State | # Submitted | State | # Submitted |
| 1      | FL    | 25          | FL    | 27          | FL    | 31          | FL    | 19          |
| 2      | NC    | 21          | NC    | 18          | NC    | 16          | NC    | 18          |
| 3      | SC    | 12          | SC    | 16          | MS    | 9           | SC    | 10          |
| 4      | GA    | 11          | MS    | 12          | KY    | 8           | GA    | 9           |
| 5      | MS    | 10          | KY    | 9           | SC    | 8           | KY    | 9           |
| 6      | KY    | 8           | AL    | 6           | TN    | 8           | MS    | 9           |
| 7      | AL    | 6           | TN    | 6           | GA    | 7           | TN    | 9           |
| 8      | TN    | 6           | GA    | 4           | AL    | 6           | AL    | 8           |

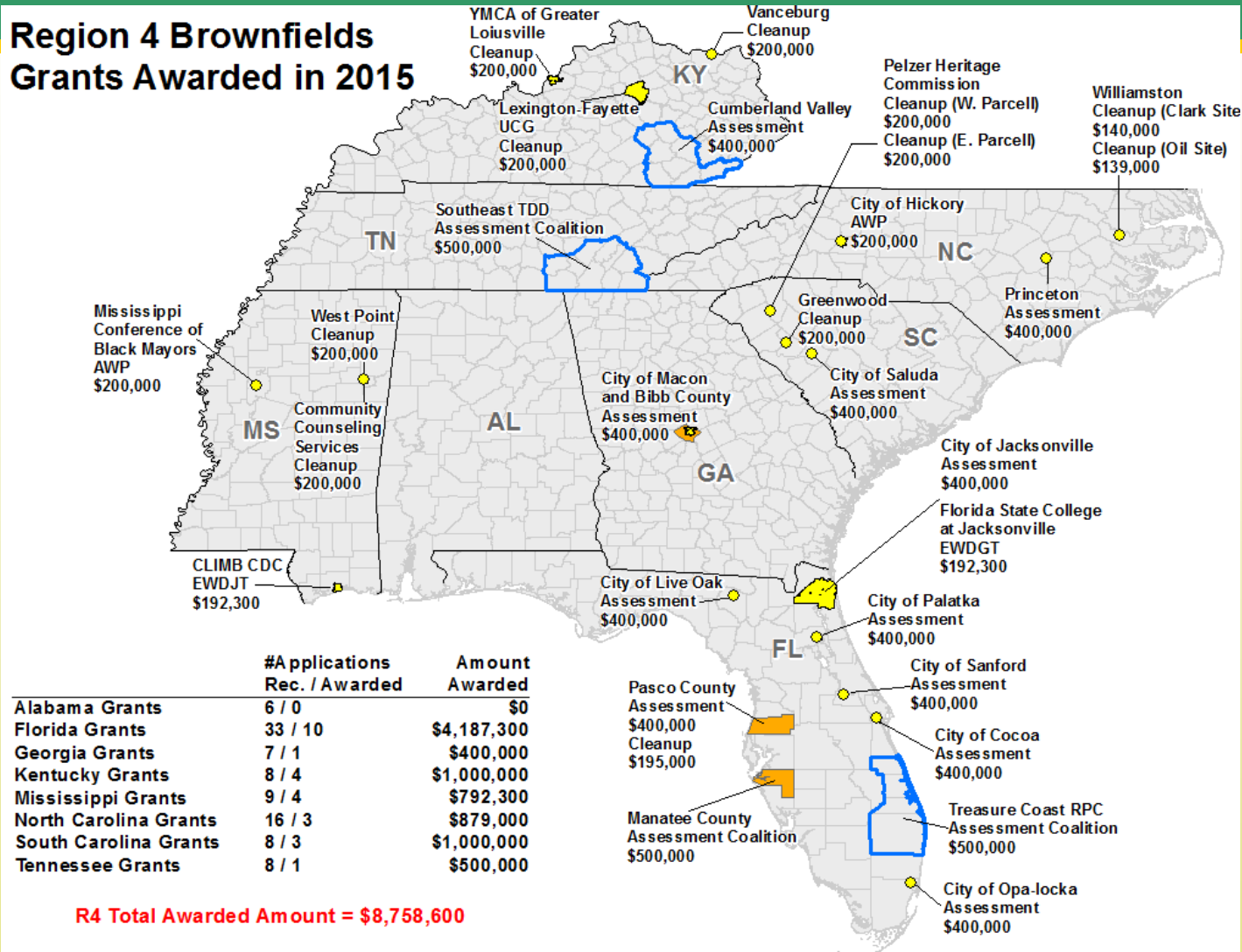


# EPA Region IV Grants Awarded...

| State            | Fiscal Year 2015 | Fiscal Year 2014 | Fiscal Year 2013 |
|------------------|------------------|------------------|------------------|
| Alabama          | 0                | 1                | 2                |
| Florida          | 10               | 2                | 9                |
| Georgia          | 1                | 2                | 4                |
| Kentucky         | 4                | 2                | 2                |
| Mississippi      | 2                | 5                | 6                |
| North Carolina   | 3                | 10               | 5                |
| South Carolina   | 4                | 5                | 2                |
| Tennessee        | 1                | 1                | 2                |
|                  |                  |                  |                  |
| Funding Received | \$7,974,000      | \$10,649,999     | \$13,200,000     |



## Region 4 Brownfields Grants Awarded in 2015





# EPA Brownfields Contacts

## Brownfields Section Chief

Cindy J. Nolan

404-562-8425

[nolan.cindyj@epa.gov](mailto:nolan.cindyj@epa.gov)

## Additional Staff as Leads for:

- Additional Training
- Revolving Loan Funds
- Job Training
- Targeted Brownfields Assessments

All EPA phone #'s 404-562-XXXX

All EPA email: last name.first name@epa.gov

Barbara Alfano 8923

David Champagne 9028

David Egetter 8250

Brian Gross 8604

Wanda Jennings 8682

Margaret Olson 8601

Olga Perry 8534

Bob Rosen 8761

Camilla Warren 8519

Keriema Newman 8859

Brian Holtzclaw 8684



# Near-term Learning Opportunity

Financing Training: [www.cdfa.net](http://www.cdfa.net) (Council of Dev.  
Finance Agencies)

2<sup>nd</sup> Southeast Brownfields Conference  
October 16-19, 2016 Jacksonville, FL  
[www.floridabrownfields.org](http://www.floridabrownfields.org)

[www.epa.gov/brownfields](http://www.epa.gov/brownfields)

or, internet search “State name + brownfields” for State Meetings near you!