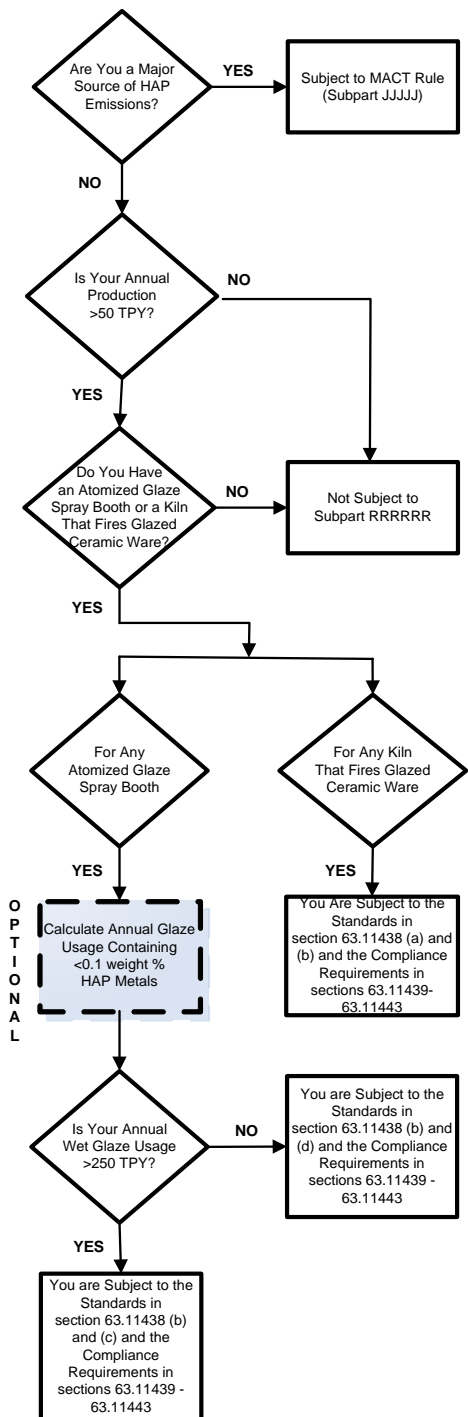


**Regulatory Flowchart  
(Clay Ceramics Manufacturing Industry)**



**You can also contact your Regional EPA air toxics office at the following numbers:**

Address	States	Website/ Phone Number
Region 1 5 Post Office Square, Suite 100 Mail code: OES04-2 Boston MA 02109-3912	CT, MA, ME, NH, RI, VT	<a href="http://www.epa.gov/region1">www.epa.gov/region1</a> (888) 372-7341 (617) 918-1650
Region 2 290 Broadway New York, NY 10007-1866	NJ, NY, PR, VI	<a href="http://www.epa.gov/region2">www.epa.gov/region2</a> (212) 637-4023
Region 3 1650 Arch Street Philadelphia, PA 19103-2029	DE, MD, PA, VA, WV, DC	<a href="http://www.epa.gov/region3">www.epa.gov/region3</a> (215) 814-2061  (800) 228-8711
Region 4 Atlanta Federal Center 61 Forsyth Street, SW Atlanta, GA 30303-8960	FL, NC, SC, KY, TN, GA, AL, MS	<a href="http://www.epa.gov/region4">www.epa.gov/region4</a> (404) 562-9131 (800) 241-1754
Region 5 77 West Jackson Blvd. Chicago, IL 60604-3507	IL, IN, MI, WI, MN, OH	<a href="http://www.epa.gov/region5">www.epa.gov/region5</a> (312) 886-6812 (312) 353-6684 (312) 886-6798
Region 6 1445 Ross Avenue Suite 1200 Dallas, TX 75202-2733	AR, LA, NM, OK, TX	<a href="http://www.epa.gov/region6">www.epa.gov/region6</a> (800) 887-6063 (214) 665-7250 (214) 665-7224
Region 7 901 North Fifth Street Kansas City, KS 66101	IA, KS, MO, NE	<a href="http://www.epa.gov/region7">www.epa.gov/region7</a> (800) 223-0425 (913) 551-7003
Region 8 1595 Wynkoop St. Denver, CO 80202-1129	CO, MT, ND, SD, UT, WY	<a href="http://www.epa.gov/region8">www.epa.gov/region8</a> (800) 227-8917* (303) 312-6460
Region 9 75 Hawthorne Street San Francisco, CA 94105	CA, AZ, HI, NV, GU, AS, MP	<a href="http://www.epa.gov/region9">www.epa.gov/region9</a> (415) 947-8715
Region 10 1200 6 <sup>th</sup> Ave. Suite 900, AWT-107 Seattle, WA 98101	AK, ID WA, OR	<a href="http://www.epa.gov/region10">www.epa.gov/region10</a> (800) 424-4372* (206) 553-6220

\* For sources within the Region only.

**For More Information**

This brochure is a general guide only; review the rule for your specific requirements at:

<http://www.epa.gov/ttn/atw/area/arearules.html>

For more information on state requirements, please contact your state representatives at:

[http://www.epa.gov/ttn/atw/area/table\\_state\\_contacts.doc](http://www.epa.gov/ttn/atw/area/table_state_contacts.doc) or <http://www.4cleanair.org/contactUsaLevel.asp>.

Office of Air Quality Planning & Standards (EI 43-02)



**Summary of Regulations  
Controlling Air  
Emissions from the**

**CLAY CERAMICS  
MANUFACTURING  
INDUSTRY**



**NATIONAL EMISSION  
STANDARDS FOR  
HAZARDOUS AIR  
POLLUTANTS  
NESHAP  
(SUBPART RRRRRR)**

**FINAL RULE**



# CLAY CERAMICS MANUFACTURING (SUBPART RRRRRR)

## What Is An Area Source?

- Any source that is not a major source. (A major source is a facility that emits, or has the potential to emit in the absence of controls, at least 10 tons per year (TPY) of individual hazardous air pollutants (HAP) or 25 TPY of combined HAP.)

## Who Does This Rule Apply To?

- All area source clay ceramics manufacturing facilities using >50 TPY of wet clay with atomized spray glazing and/or a kiln firing glazed ceramic ware. Includes facilities that manufacture pressed tile, sanitaryware, dinnerware, or pottery.
- All atomized glaze spray booths and kilns firing glazed ceramic ware.

## What Am I Required to Do?

### Equipment Requirements:

#### Atomized Spray Glaze Operations:

- There are different requirements based on how much wet glaze is used at a facility; therefore, you must maintain annual wet glaze usage records to document whether you use > or ≤ 250 TPY wet glaze.
- Facilities using > 250 TPY wet glaze
  - ◇ Use an air pollution control device; operate and maintain the control device according to the equipment manufacturer's specifications, **or**

- ◇ Use only glazes containing < 0.1 weight % of HAP metals
- Facilities using < 250 TPY wet glaze
  - ◇ Employ waste minimization practices (e.g., high-volume, low-pressure [HVLV] spray equipment), **or**
  - ◇ Comply with either option for facilities using > 250 TPY wet glaze (see above).

#### Kilns Firing Glazed Ceramic Ware:

- Maintain peak temperature < 2,800°F
- Use natural gas (or equivalent clean-burning fuel) as kiln fuel, or use electric-powered kiln.

### Monitoring Requirements:

#### Atomized Spray Glaze Operations Equipped with Control Device:

- Initial control device inspection and one of the following:
  - ◇ Periodic control device inspection, **or**
  - ◇ Daily 30-minute Method 22 visible emissions test, **or**
  - ◇ Approved alternative monitoring technique under section 63.8(f).

#### Kilns Firing Glazed Ceramic Ware:

- Daily check of peak firing temperature

## What is the Compliance Date?

- Existing Sources: December 26, 2007.
- New Sources: Upon initial startup.

## What Are The Permitting Requirements?

- This area source category is exempt from Title V.

## What Are The Impacts?

- The only cost associated with the area source rule is for reporting and recordkeeping requirements, estimated to be \$974 per facility. This is a one-time cost.
- Emissions of HAP metals from this industry are already well-controlled as a result of existing Federal, State or local standards, permitting requirements, and/or industry practices. This area source rule is not expected to change the level of existing emissions control.

## What Reports and Records Are Required?

### Reporting:

- Initial Notification and Notification of Compliance Status (may be combined), due 120 days after publication of rule in the Federal Register.
- Initial Notification informs EPA that the facility is subject to the standards. Notification of Compliance status provides certification of compliance with the standards.
- No ongoing compliance reports are required beyond any pre-existing Title V requirements.

### Recordkeeping:

- Records to include copies of notifications submitted to EPA and records of monitoring and inspection.
- Records to be maintained in a form suitable and readily available for expeditious review.