

Health Effects of Organic Aerosols:

Results from the Southeastern Center for Air
Pollution & Epidemiology

Stefanie Ebelt Sarnat, Emory University

March 15th, 2016

*U.S. EPA STAR Progress Review Meeting: Anthropogenic Influences on
Organic Aerosol Formation and Regional Climate Implications*

Air Pollution Health Effects

- Strong evidence for health effects of ambient air pollution, including PM, PM components, and criteria gases

Respiratory

Coughing, wheezing,
reduced lung function

Exacerbation of asthma,
COPD

Lung cancer

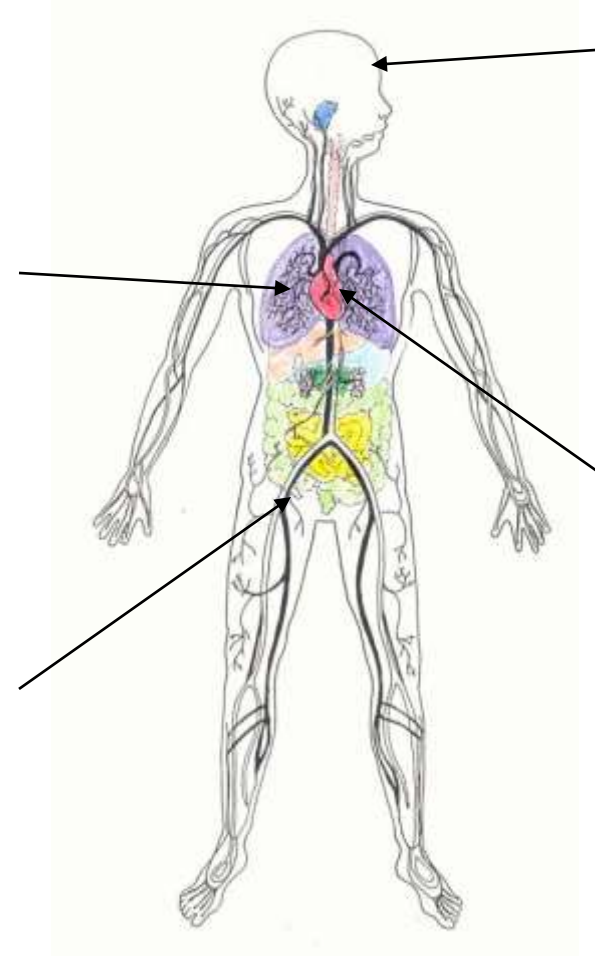
Respiratory mortality

Reproductive

Low birth weight

Preterm births and
intrauterine growth
retardation (?)

↑ Birth defects (?)



Central Nervous

Cerebrovascular impairment

↑ Stroke (?)

Cardiovascular

↑ Systemic inflammation

Autonomic system disorder (HRV
reduction, HR increase dysrhythmias)

↑ Atherosclerosis

↑ Myocardial infarctions

CV mortality

Health Relevance of Organic Aerosols

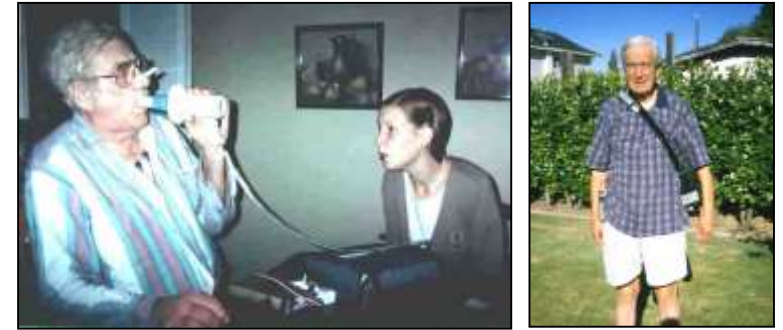
- Increasing recognition of the health relevance of organic aerosol
- Particulate organic carbon (OC) comprises a substantial portion PM_{2.5}, and has been associated with adverse health effects
- Other organic aerosols, including OC species or volatile organic compounds (VOCs), have received less attention
- In general, data limitations have hindered their assessment
- Their assessment presents
 - Classic epidemiologic challenges: study design, model selection, co-pollutant confounding, exposure measurement error
 - Special considerations: different measurement methods; mixtures of gases and particles, many species, from primary and secondary sources

Organic Aerosol Data used in Health Studies

- Measurements at monitoring sites or on subjects, e.g.
 - Particle-phase total OC (e.g., filter samples analyzed via TOR/TOT)
 - Particle-phase non-polar organic compounds (e.g., filter samples analyzed via TD-GCMS)
 - Volatile organic compounds (e.g., air samples analyzed via GC-FID)
- Modeled indices of multi-pollutant mixtures containing organic aerosols, e.g.
 - $PM_{2.5}$ source apportionment → high OC content sources
 - $PM_{2.5}$ oxidative potential



Health Study Design?

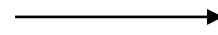


- Broadly depends on
 - Outcomes of concern (e.g., disease exacerbation vs. onset)
 - Exposure data availability
- Short-term (acute) effects studies
 - Consider short-term temporal variability in pollution (e.g., 1-5 days)
 - Outcomes and exposures compared over time
 - *Population-based time-series studies* of mortality, hospitalizations
 - *Small panel studies* of subjects followed repeatedly over short period
- Chronic effects studies
 - Consider long-term spatial/inter-individual variability in pollution (annual, multi-year)
 - Outcomes and exposures compared across communities or individuals
 - *Large cohort studies* of subjects followed over many years

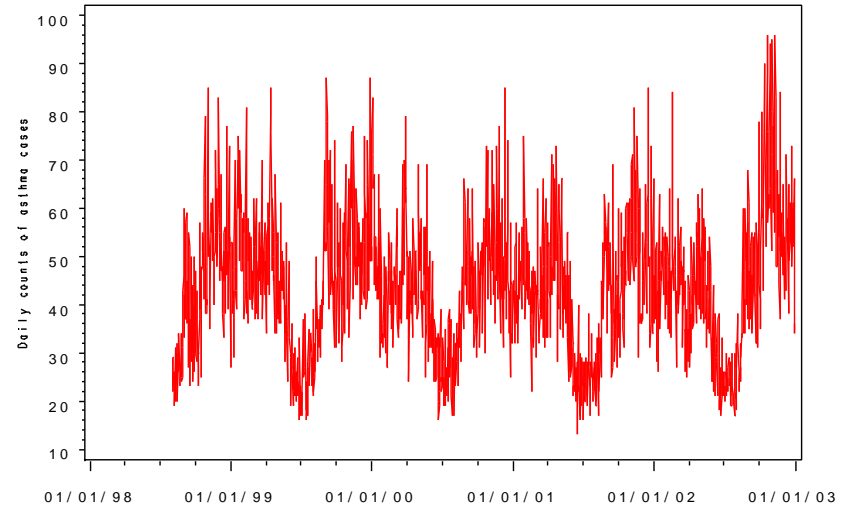
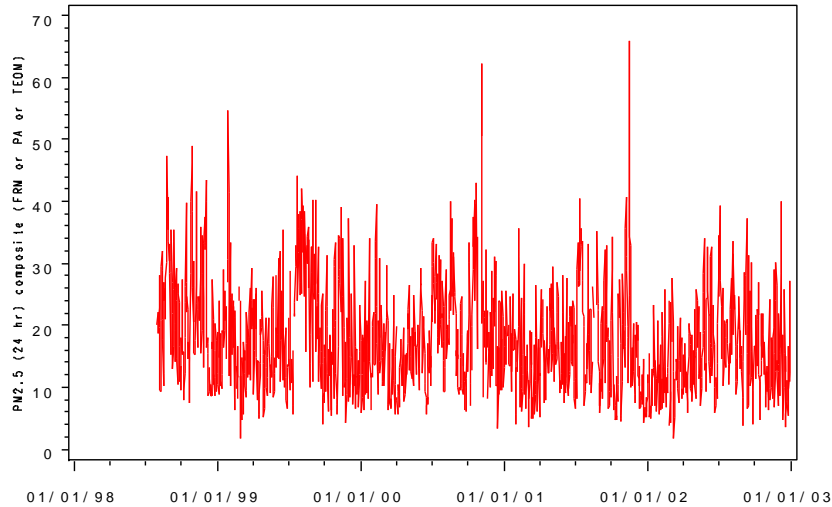
Time-Series Studies

- Examine associations between daily air pollution concentrations and daily counts of health outcome (morbidity or mortality)

'EXPOSURE':
Daily ambient PM_{2.5} concentrations



OUTCOME:
Daily counts of ED visits for asthma



CONFOUNDERS: time trend, day-of-week, holidays, hospital entry/exit, temperature, dew point

Southeastern Center for Air Pollution and Epidemiology (SCAPE)

- USEPA Clean Air Research Center
- Co-directors: Paige Tolbert (Emory), Ted Russell (Georgia Tech)
- Objective: to improve our understanding of how air pollutant mixtures impact health, using field measurements, modeling and epidemiologic approaches
- Project 4: Multi-City Morbidity Study
 - Extends single-city work in Atlanta, Dallas, and St. Louis (initiated previous to SCAPE with funding from EPRI, USEPA, NIH) to 5 cities

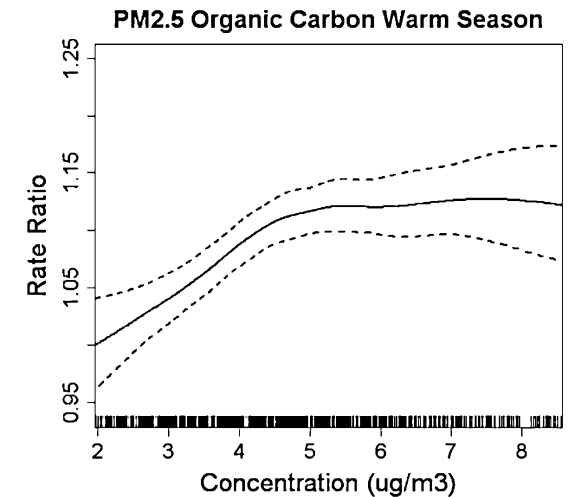
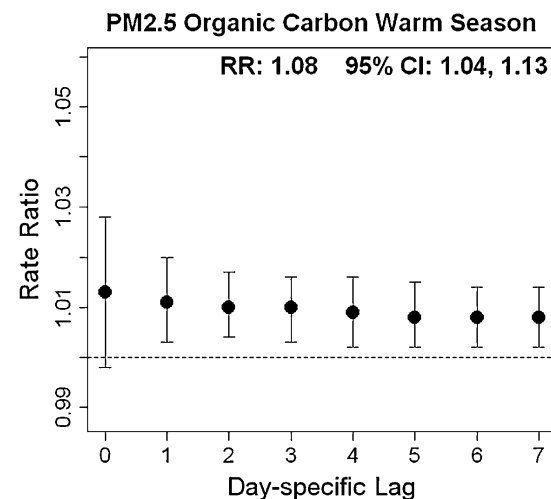


Model Selection: Lag Structure, Concentration-Response Shape?

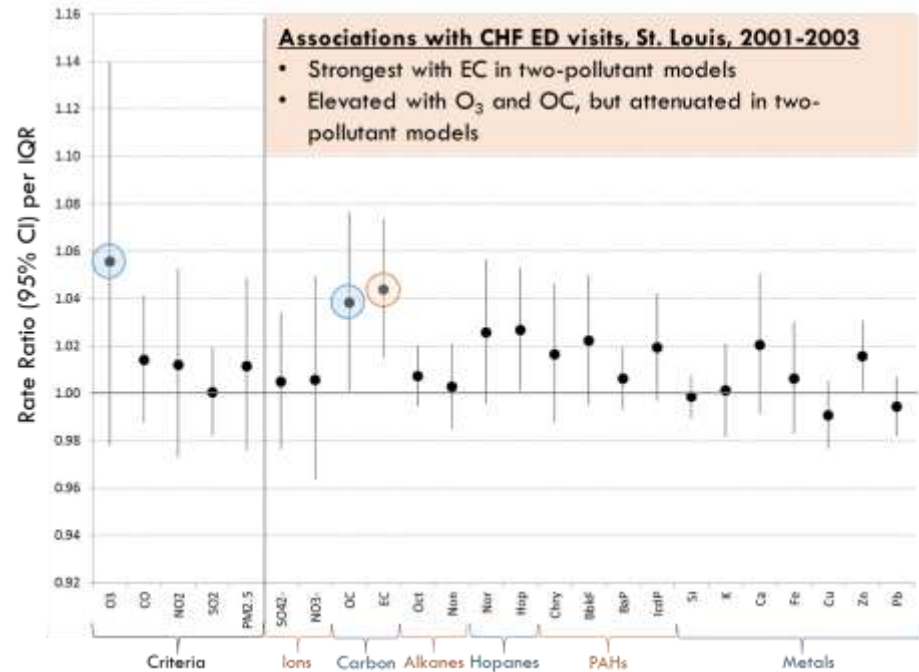
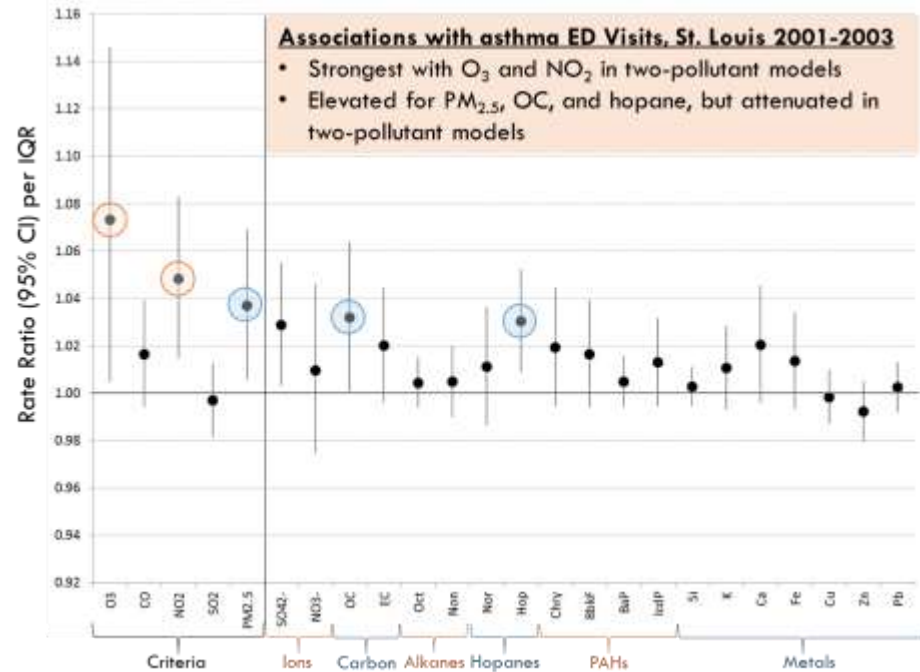
- Long-term daily monitoring conducted at Atlanta Jefferson St. Site (1998-present)
- Previous analysis of 1998-2004 data
- Significant warm-season OC associations with pediatric asthma ED visits
- Suggestion of non-linearity and possibly longer lags important
- Attenuated with control for O₃

TABLE 2. RATE RATIOS AND 95% CONFIDENCE INTERVALS FROM POISSON GENERALIZED LINEAR MODELS FOR INTERQUARTILE RANGE INCREASES IN THREE-DAY MOVING AVERAGE POPULATION-WEIGHTED AMBIENT AIR POLLUTANT CONCENTRATIONS*

	Overall RR (95% CI) (Jan–Dec)	Warm Season RR (95% CI) (May–Oct)	Cold Season RR (95% CI) (Nov–Apr)
Ozone ^{††}	1.062 (1.031–1.093)	1.082 (1.043–1.123)	1.044 (0.992–1.098)
Nitrogen dioxide [†]	1.036 (1.018–1.055)	1.066 (1.038–1.095)	1.016 (0.992–1.040)
Carbon monoxide [†]	1.023 (1.006–1.041)	1.068 (1.034–1.102)	1.005 (0.985–1.025)
Sulfur dioxide [†]	1.012 (0.994–1.030)	1.030 (1.002–1.058)	1.001 (0.978–1.025)
PM ₁₀ [§]	1.020 (1.003–1.038)	1.026 (1.001–1.051)	1.018 (0.994–1.043)
PM _{10-2.5}	1.034 (1.011–1.057)	1.025 (0.991–1.059)	1.041 (1.010–1.073)
PM _{2.5}	1.020 (1.002–1.039)	1.043 (1.016–1.070)	1.005 (0.978–1.031)
PM _{2.5} sulfate	1.014 (0.995–1.033)	1.027 (1.004–1.049)	0.991 (0.953–1.029)
PM _{2.5} elemental carbon	1.015 (0.997–1.033)	1.041 (1.010–1.072)	1.003 (0.981–1.026)
PM _{2.5} organic carbon	1.008 (0.994–1.021)	1.034 (1.007–1.062)	1.000 (0.985–1.016)
PM _{2.5} water-soluble metals	1.021 (1.000–1.042)	1.029 (1.003–1.055)	1.005 (0.968–1.043)



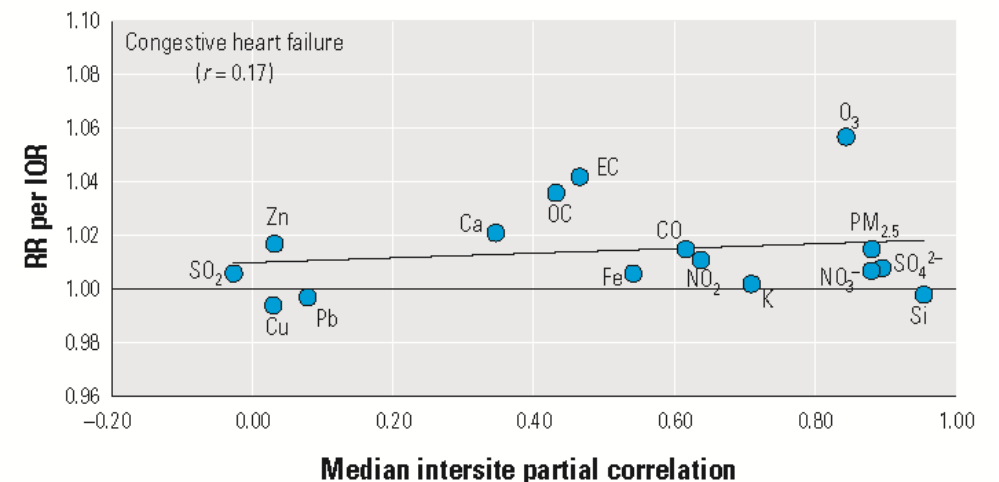
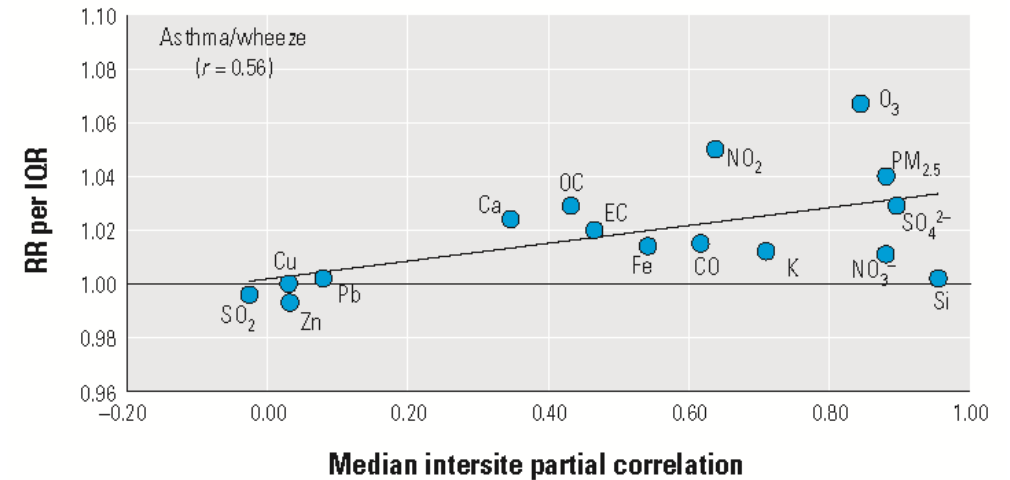
Co-Pollutant Confounding?



- Speciated PM_{2.5} measurements collected at St. Louis Supersite at Tudor St., 2001-2003
- Epidemiologic results similar to those observed in Atlanta
- Carbon components more strongly associated with cardiovascular than respiratory outcomes

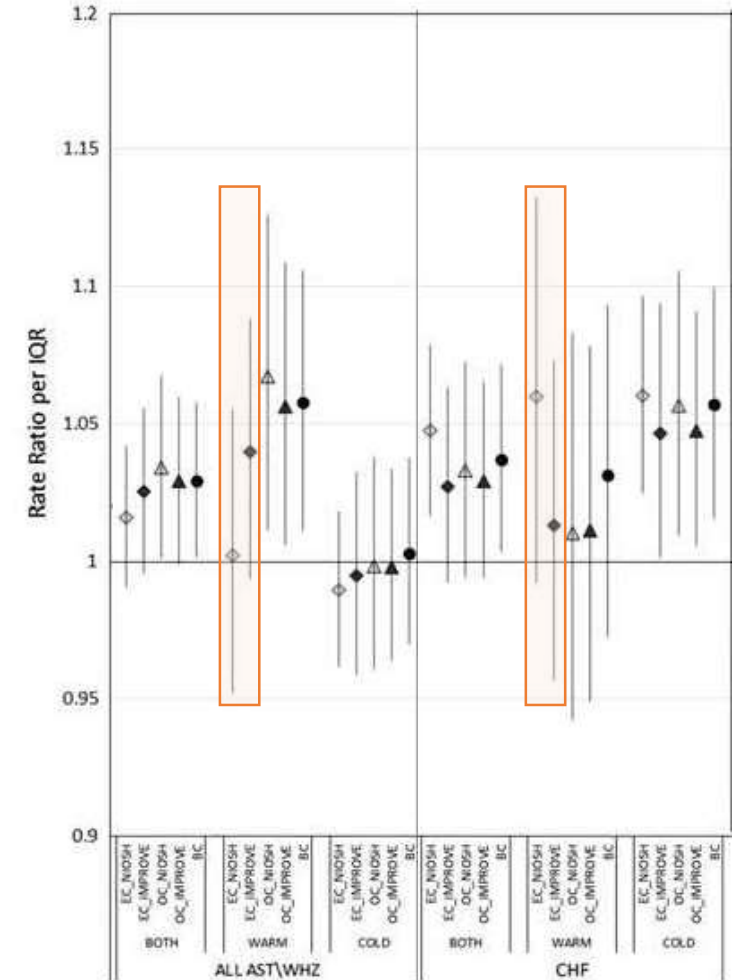
Exposure Measurement Error?

- Assessed correlations of pollutant data available at multiple monitoring sites in St. Louis to provide an indication of spatiotemporal heterogeneity
 - 4-14 sites, depending on pollutant
- Positive trends between the median inter-site correlations and observed RRs across pollutants for asthma outcome
- Suggests downward bias of observed RRs for pollutants with higher spatiotemporal variability
- Consistent with work in Atlanta
 - Simulation studies (Goldman et al., 2010, 2011, 2012)
 - Application of modeled spatially-resolved AQ data (Sarnat et al., 2013)



Impact of EC/OC Measurement Methods?

- Two common EC/OC measurement methods
 - Thermal optical transmittance (e.g., NIOSH method)
 - Thermal optical reflectance (e.g., IMPROVE method)
 - Differ in how carbon particles are apportioned to EC and OC
- Speciation Trends Network changed from NIOSH-like to IMPROVE method during 2007-2009
- Examined impact of measurement method on observed epidemiologic results in St. Louis
- Associations of ED visits and EC/OC from the two methods generally concordant
- But, differences in warm-season EC associations
 - May reflect differences in composition of PM assigned to EC and OC
 - EC from IMPROVE shown to include more biomass burning-related OC and secondary organic aerosols than EC from NIOSH

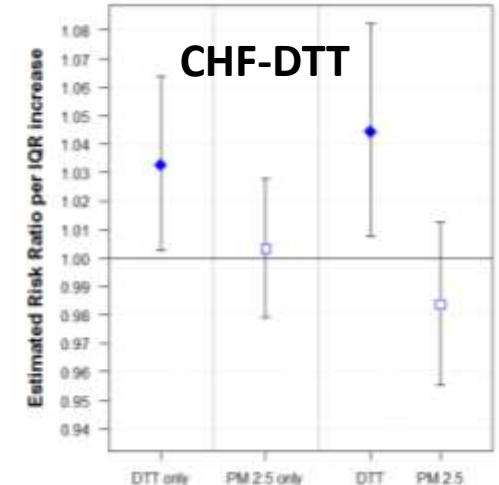
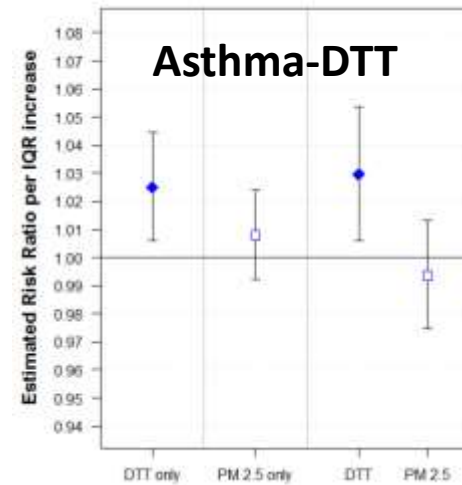


Modeled Indices of Mixtures that Contain Organic Aerosols: E.g., PM_{2.5} Oxidative Potential

- Oxidative stress, an imbalance of antioxidants and oxidants in the body, is a mechanism through which PM_{2.5} may adversely impact health
 - Due to oxidants carried to lungs, or
 - Due to potential for inhaled aerosol to generate reactive oxygen species (ROS)
- Weber group has worked on two different antioxidant assays that measure PM_{2.5} OP via antioxidant depletion in vitro
 - Dithiothreitol (DTT), chemical surrogate of cellular reductants
 - Ascorbic acid (AA), a physiological antioxidant found in lung lining fluid
- During SCAPE, collected detailed aerosol measurements on ~200 days at Atlanta Jefferson St. site during 2012-2013, including DTT and AA
- For retrospective epidemiologic studies, develop prediction models for DTT and AA in order to back-estimate PM_{2.5} OP
 - First approach developed such models based on PM_{2.5} source apportionment data

Health Associations with Back-Casted Estimates, Atlanta 1998-2012

- DTT activity associated with asthma and CHF ED visits
- Associations with AA activity weaker or null
- DTT activity strongly correlated with multiple ROS-active pollutants (organic species, water-soluble metals) while AA primarily reflects copper
- DTT a promising integrated indicator for multipollutant ROS activity
- Results support hypothesis that oxidative stress derived from ambient air pollution is a pathway to adverse health outcomes
- Developing other approaches to predict and back-cast PM_{2.5} OP in this study

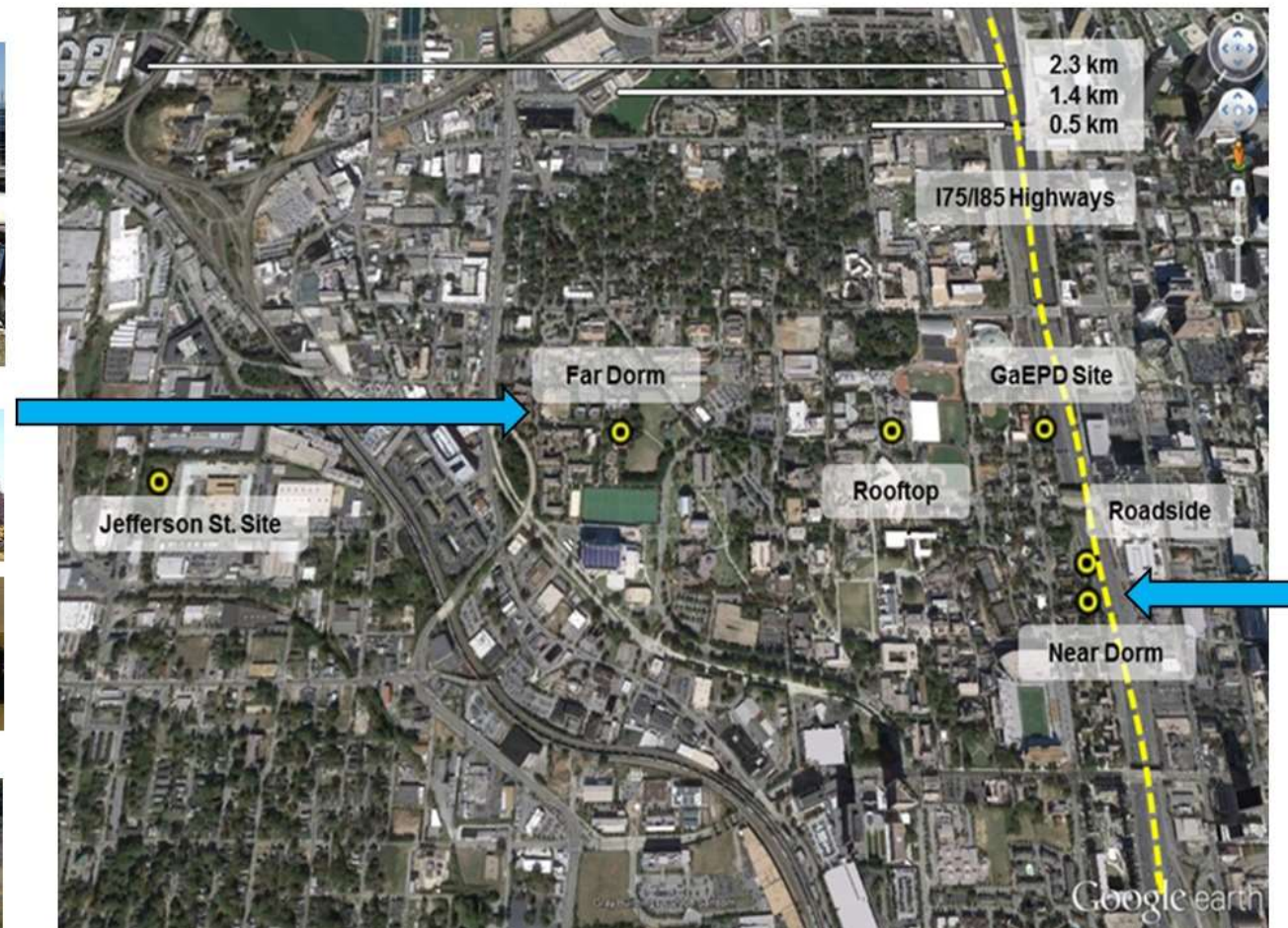


Bates et al., *Environ Sci & Technol* 49:13605-13612, 2015

Fang et al., *Atmospheric Chemistry and Physics*, accepted

Other Study Designs for Targeted Questions

E.g., the *Dorm Room Inhalation To Vehicle Emissions (DRIVE)* study to develop multipollutant indicators of primary traffic pollution (Sarnat J, Russell; PIs); collect intensive data on CO, NO₂, NO, BC, OC, and WS-DTT outdoors and indoors at varying distances from traffic hotspot



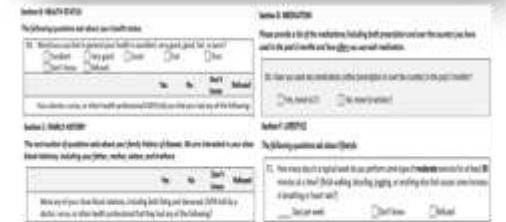
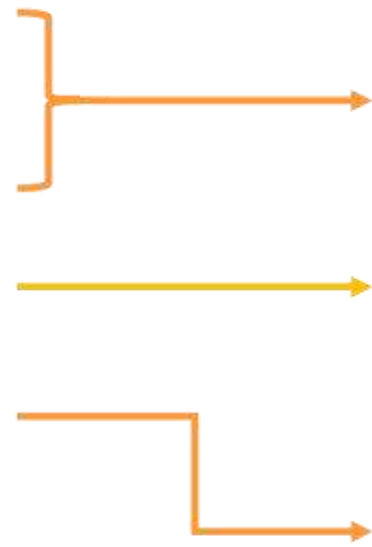
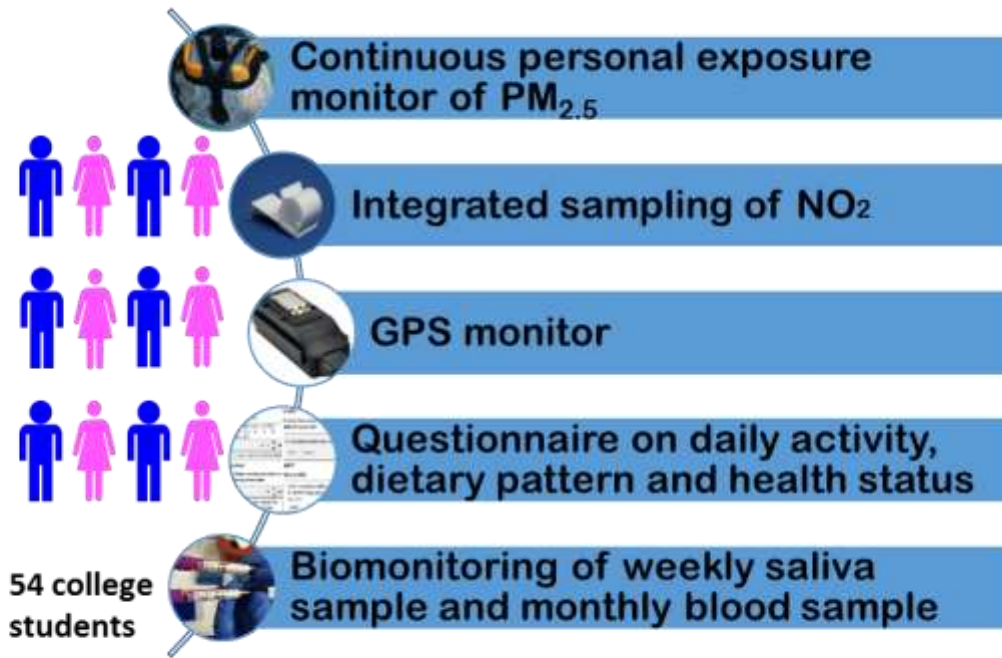
Personal Sampling and Biomonitoring Opportunities



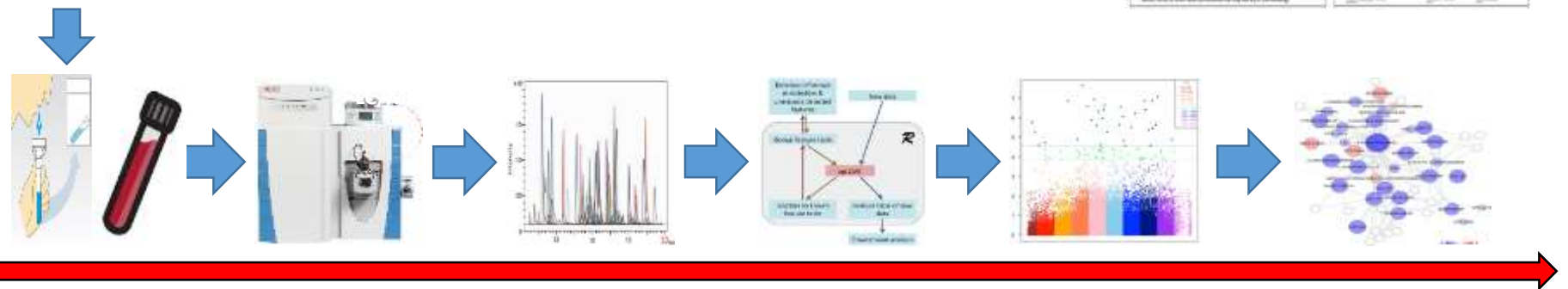
Near Dorm (20 Meters)



Far Dorm(1.4 km)



Metabolomics Analysis



Summary and Considerations for Future Work

- Health studies increasingly assess acute effects of organic aerosols
 - Classic epidemiologic issues: model selection, co-pollutant confounding, exposure error
 - Special considerations: lack of detailed information on atmospheric chemistry, measurement method impacts, multi-pollutant mixtures
- Few if any long term studies of organic aerosols
- Future measurements for health studies should be designed to take advantage of temporal and/or spatial contrasts
 - For population-based acute effects setting, information on daily levels is critical
 - For panel-based setting, measurement methods that can be used in diverse microenvironments, with low detection limits given lower collected mass on personal samples
 - For long-term cohort studies, models that can accurately predict individual-level long-term concentrations at residences or where subjects spend time

Funding Acknowledgements

- This research supported by a USEPA Clean Air Research Center grant (RD834799)
- ED visit studies also made possible by funding from the USEPA (R82921301), NIEHS (R01ES11294), and EPRI (EP-P27723/C13172, EP-P4353/C2124, EP-P34975/C15892, EP-P45572/C19698, and EP-P25912/C12525)
- DRIVE study supported by a Health Effects Institute grant (4942-RFA13-1/14-3-2)



¹SCAPE Project 4 and ²DRIVE Study Teams



Emory investigators

- Howard Chang^{1, 2}
- Lyndsey Darrow (UNR)¹
- Roby Greenwald (GSU)²
- Rachel Golan (Ben Gurion)²
- Dean Jones²
- Mitch Klein¹
- Jeremy Sarnat²
- Stefanie Sarnat^{1, 2}
- Paige Tolbert¹
- ViLinh Tran²
- Andrea Winquist¹
- Tianwei Yu²

Many other SCAPE investigators, previous students, post-docs, and collaborators

Emory students and post-docs

- Joe Abrams^{1, 2}
- Brooke Alhanti¹
- Jenna Krall¹
- Cassandra O'Lenick¹
- Chandresh Ladva²
- Donghai Liang^{1, 2}
- Dongni Ye¹
- DRIVE Msc students (Cheryl Cornwell, Karelys Parada, Seongmin Shim, Eric Yang)²



Georgia Tech investigators

- Mike Bergin (Duke)²
- Jim Mulholland¹
- Ted Russell^{1, 2}
- Rodney Weber²
- Vishal Verma (IL-Urbana Champaign)²

Georgia Tech students

- Mariel Friberg¹
- Josie Bates¹
- Ting Fang¹
- Dong Gao²
- Jennifer Moutinho²
- DRIVE MSc students (Xinxin Zhai, Karoline Johnson)²