



**Laser Imaging SF₆ Inspection
for
Chicago White Metal Casting, Inc.**

SF₆ System Specifications

- SF₆ is mixed with dry air
- Dry air used has a dew point of -100 deg F
- SF₆ to air mixture is .4%
- Main distribution line pressure is at 90 PSI
- Branch lines to furnaces are at 20 PSI
- Flow rate is 6-8 sq. cu. Ft./hr

Mixing station



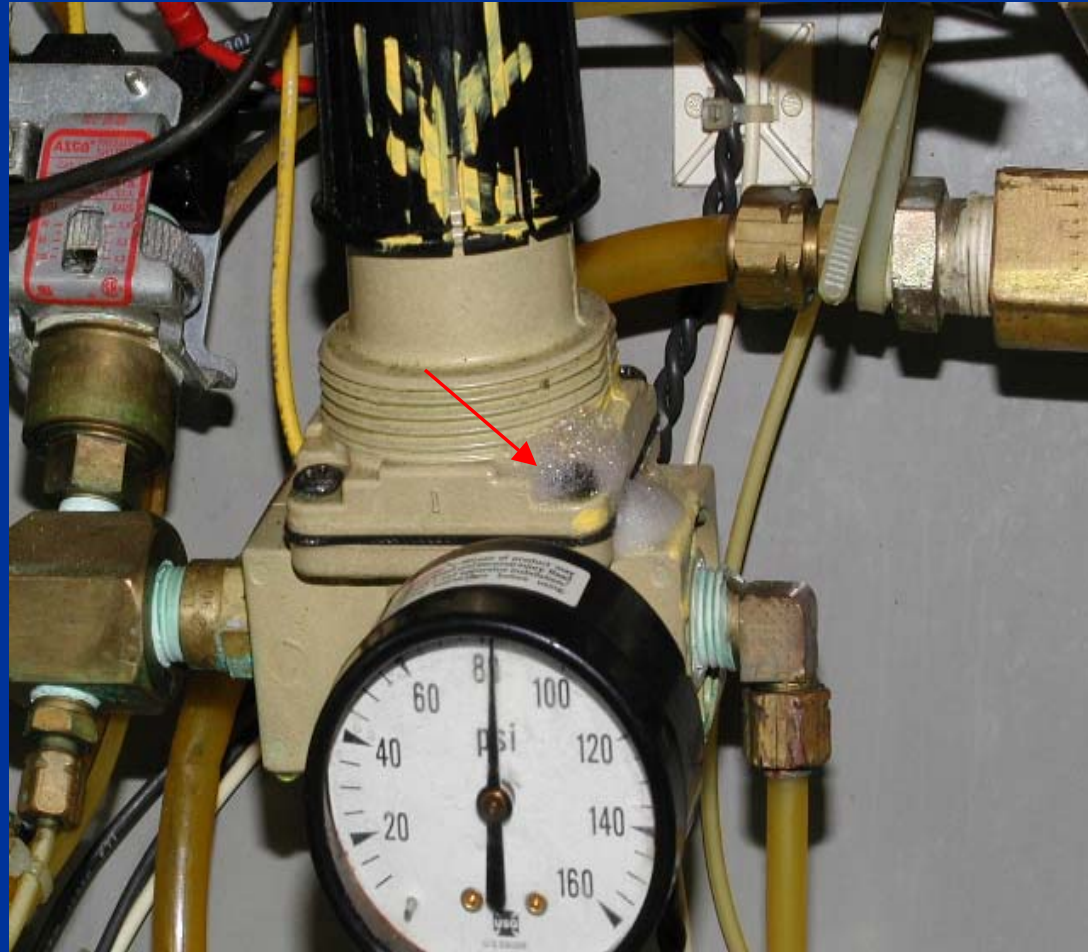
Mixing station inspection



Mixing station



Confirmed regulator leak using soap test

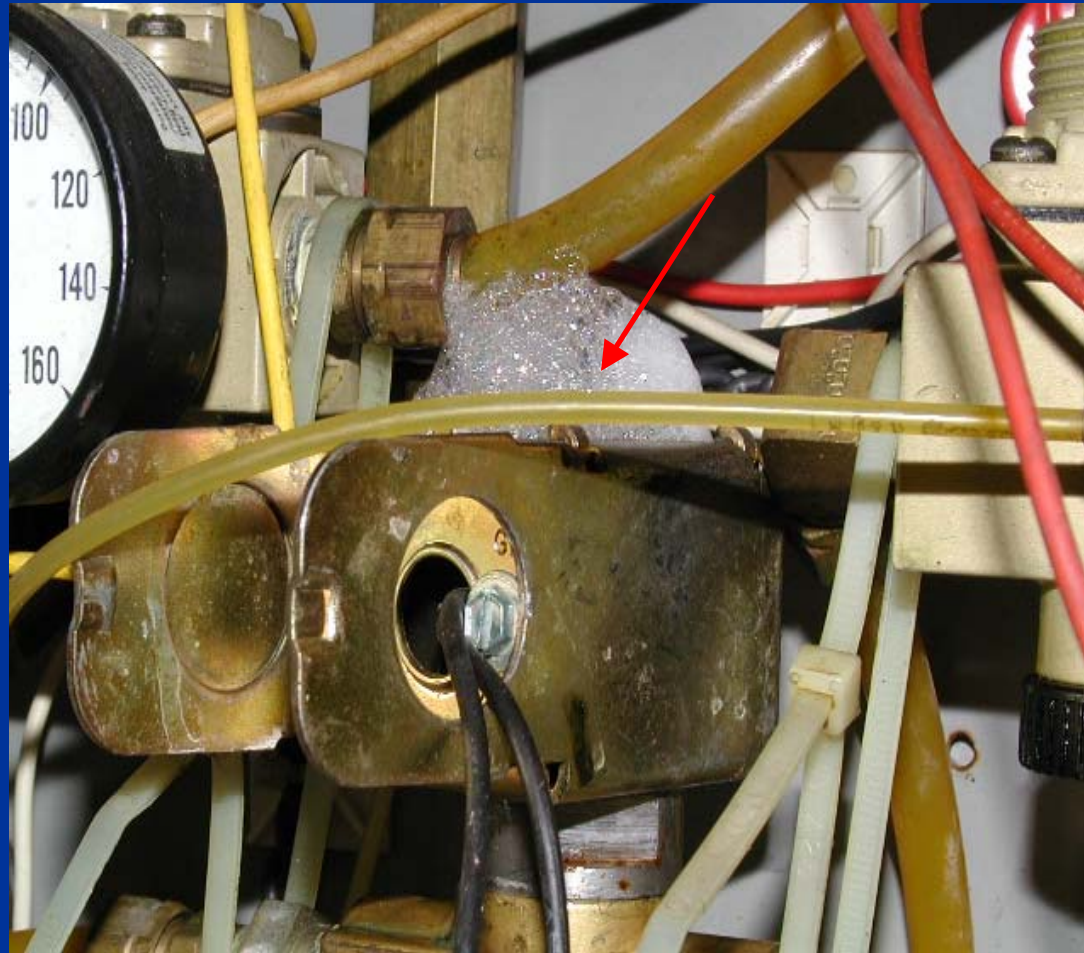


Regulator flange leak

Tightened screws and leak stopped



Confirmed solenoid valve leak using soap test



Solenoid valve leak

Replaced valve – leak stopped



Central distribution line inspection



Service corridor



Service corridor branch line inspection



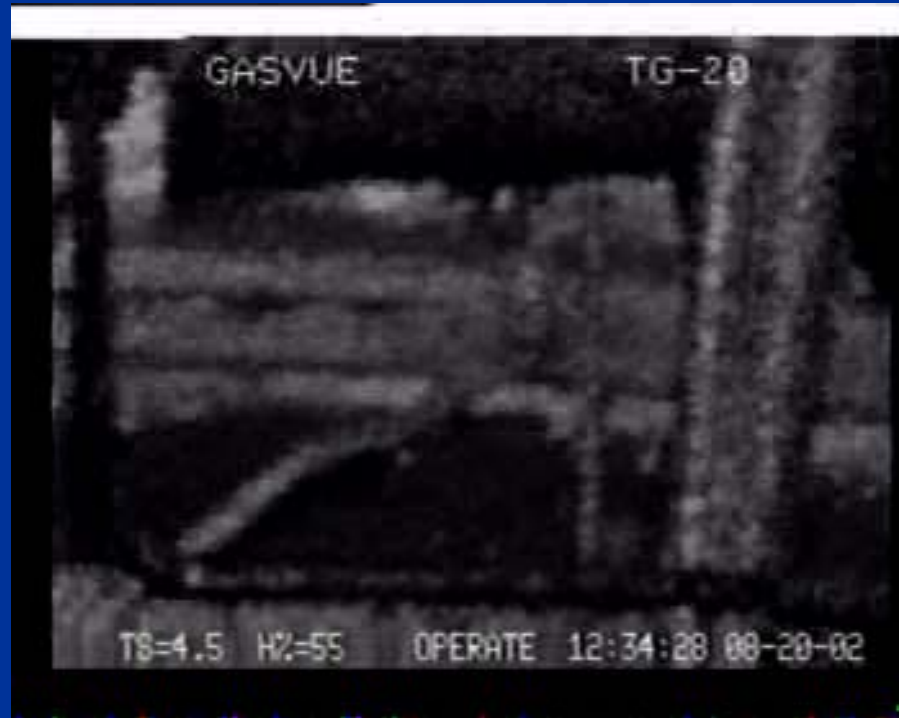
Flow meter inspection



#21 Machine - feed tube flared fitting



#21 Machine - feed tube flared fitting



#26 Machine – feed tube flared fitting



#26 Machine – feed tube flared fitting Tightened fitting – leak stopped



#29 Machine – copper fitting leak



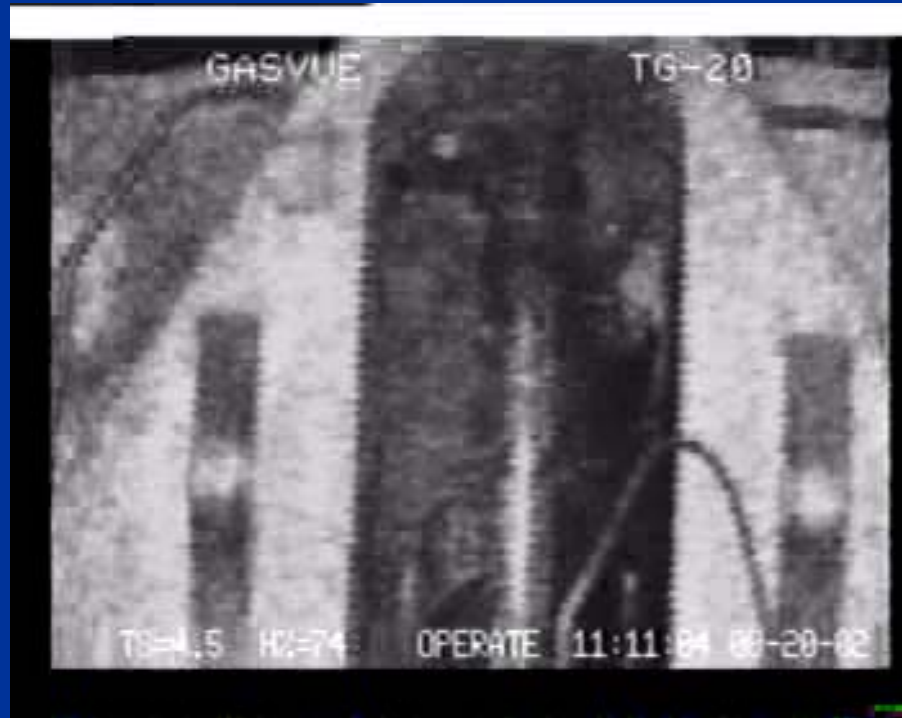
#29 Machine – copper fitting leak Tightened – leak stopped



Shaft seal leaking on all machines



Shaft seal leaking



New design feed line



Hard at work

