

This presentation (and all materials associated with the project: Assessment of Environmental Health Data in the California – Baja California Border Region) was created as a deliverable for grant number SOLTA14-008: Border Environmental Health Data Compilation and Evaluation for the U.S.- Mexico Border 2020 Program.”

ASSESSMENT OF ENVIRONMENTAL HEALTH DATA FOR THE CALIFORNIA/ BAJA CALIFORNIA BORDER

Paul English, Gala King, Dan Meltzer,
Max Richardson, and Jackie Valle

January 27, 2016

Assessment Overview

3

- The project
- The region
- Health and the environment
- Data gaps
- Recommendations

Funded by:

U.S. – Mexico Border 2020 Program

4

“The Border 2020: U.S.-Mexico Environmental Program is a collaborative effort of the United States and Mexico to improve the environment and protect the health of the nearly 12 million people living along the border.”

- Overseen and administered by U.S. EPA, SEMARNAT
- Grant administration supported by BECC

<http://www2.epa.gov/border2020>



California Environmental Health Tracking Program

5

- Part of the CDC's National Environmental Health Tracking Program
 - ▣ Funded since 2002
- Areas of expertise:
 - ▣ GIS, software development, health education, spatial statistics, epidemiology, HIA/planning
- Data portal since 2006
 - ▣ www.cehtp.org

CALIFORNIA ENVIRONMENTAL HEALTH T
Improving Public Health With Better Inf



Welcome to the California Environmental Health Tracking Progr
We are working to improve public health by delivering science-based inform
of diseases and environmental threats, as well as the often complex

California Environmental Health Tracking Program

6

Data matter.

- Track issues
- Target interventions
- Monitor impacts

CEHTP Mission

Provide data and information on diseases and environmental threats to inform environmental and public health programs, research, and policies.

Improving data collection

7

Binational data coordination can facilitate public health action responsive to local communities

Data most actionable when there are...

- ▣ Standardized metrics
- ▣ Environmental and health trends over time
- ▣ Meaningful data comparisons

Children are vulnerable

8

Children...

- eat, drink, and breathe more than adults relative to body weight
- have still-developing central nervous, immune, reproductive, and digestive systems
- play outdoors and engage in hand-to-mouth behavior
- have little control of their environment

Source: World Health Organization. For more about children's environmental vulnerability, visit: <http://www.who.int/ceh/risks/en/>

Project goals

9

- Report
- Assess data sources
- Template for other projects
- Recommendations and strategies

Project challenges & strengths

10

Challenges

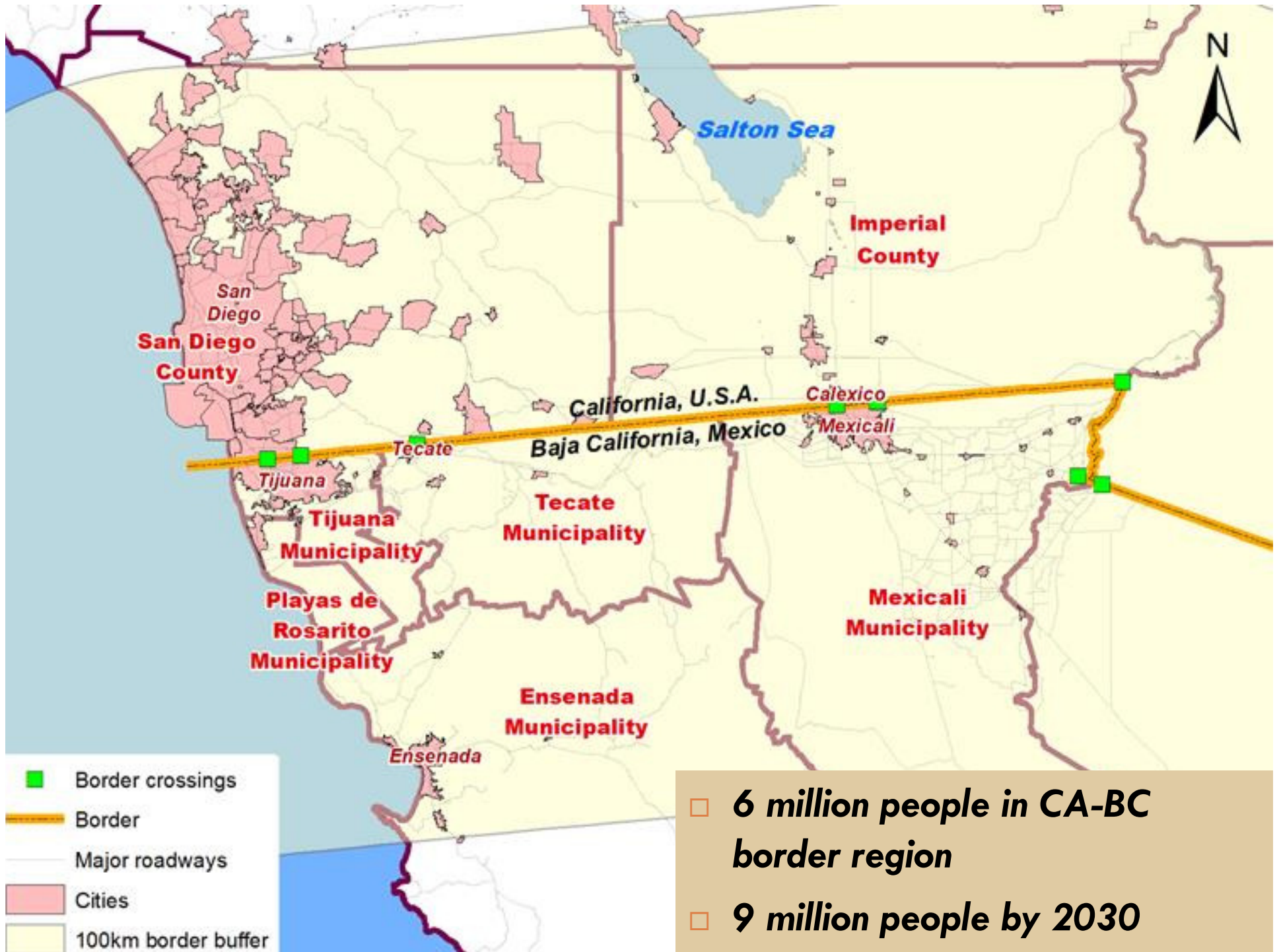
- Large amount of data available
- Data accessibility
- Differences in metrics

Strengths

- Large amount of data available
- There are established efforts to coordinate
- We have models that can be used as resources



About the region



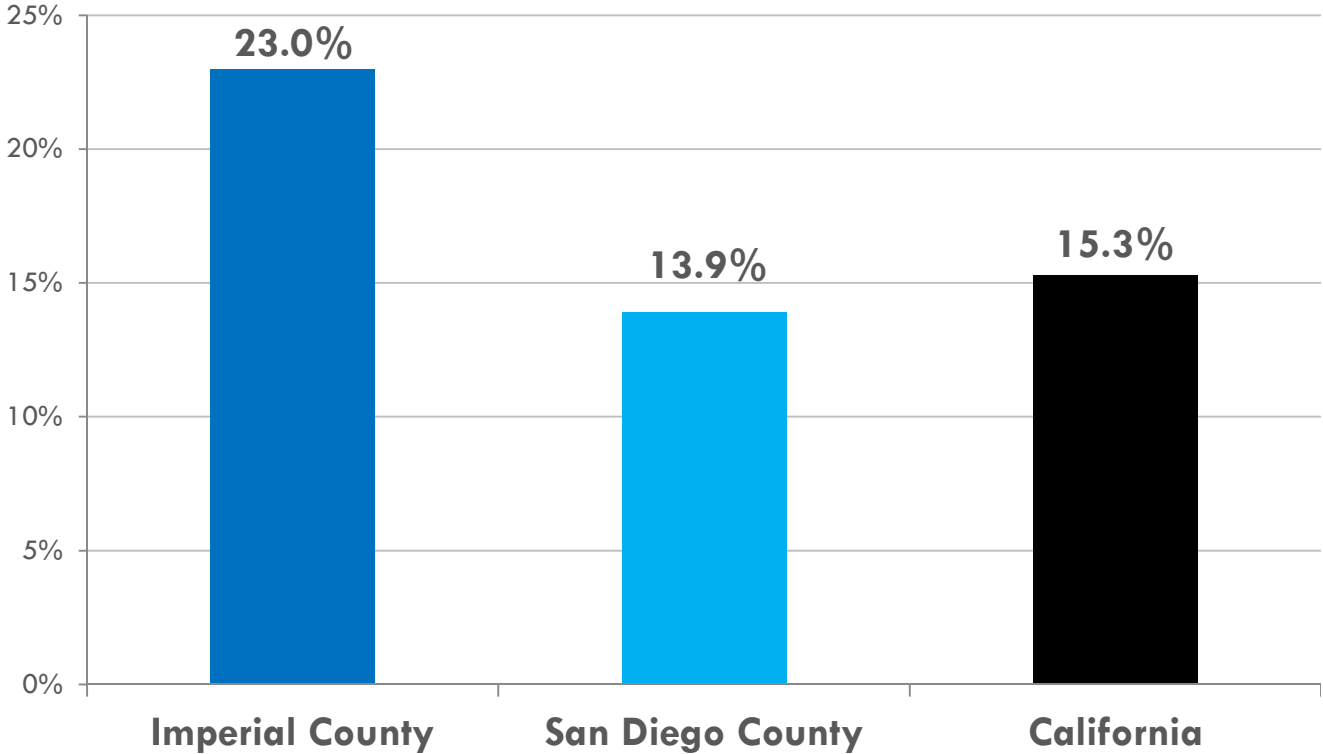
Regional context

13

- ▣ 6 million people, rapid population growth
- ▣ Languages
- ▣ Poverty
- ▣ Access to health care
- ▣ The border region: one single interconnected area

The region is not uniform

Percent below poverty in the California border region, 2012



Source: U.S. Census Bureau
factfinder.census.gov



Environment and Health

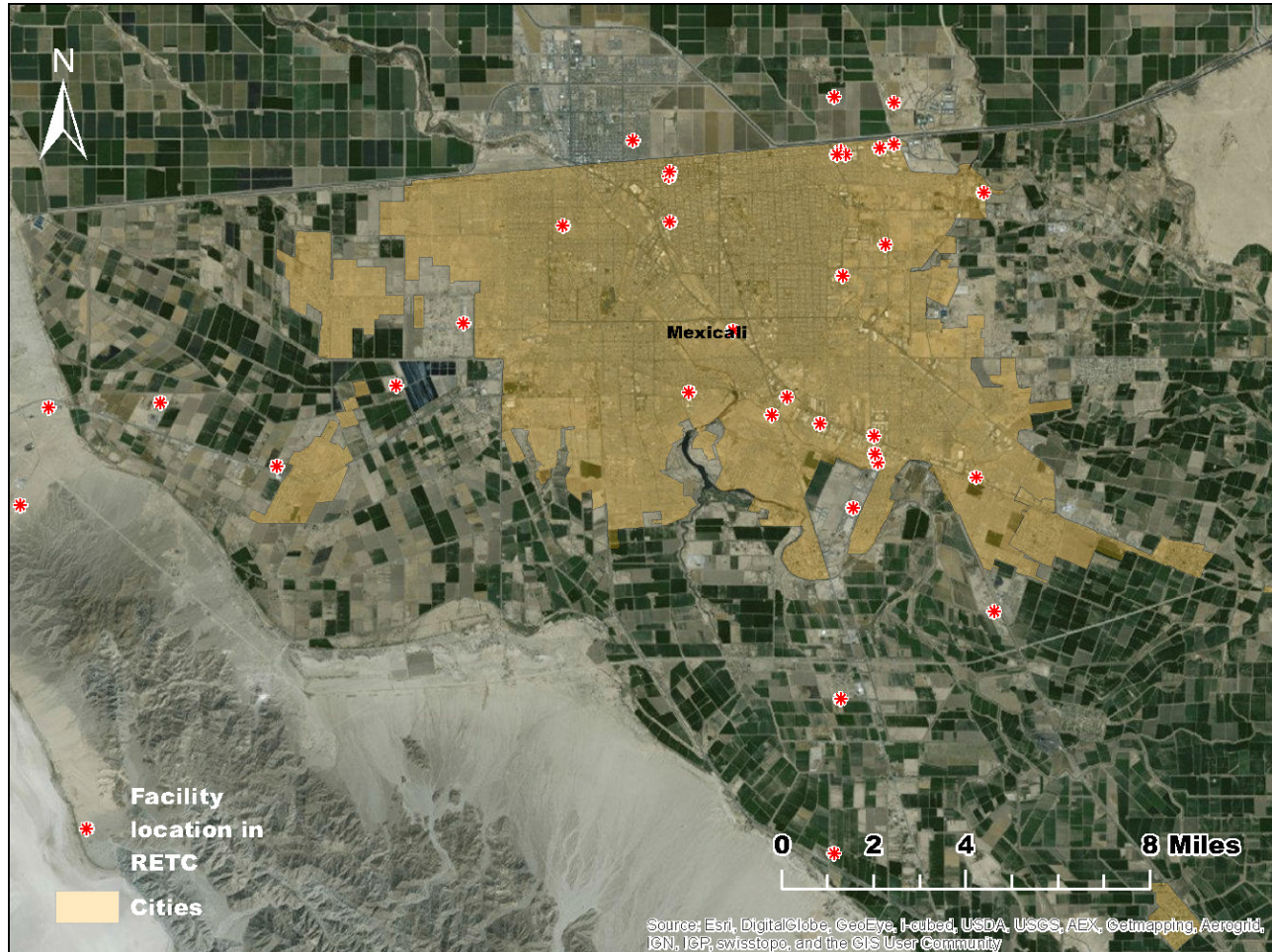
Content Areas - Environment

16

- Air contaminants
- Climate change
- Pesticide use
- Traffic and health
- Drinking water quality
- Facilities releasing toxic materials
- Green spaces

Data snapshot: RETC facility locations

17



The project ● The region ● **Health, environment** ● Data gaps ● Recommendations

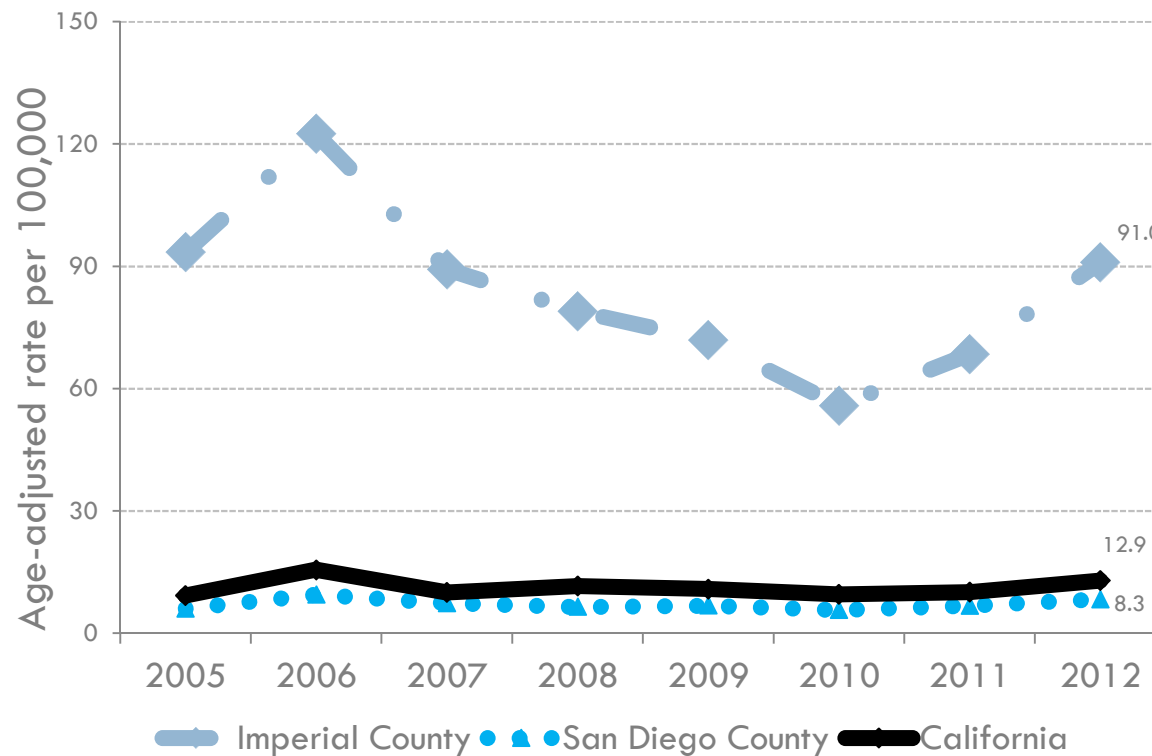
Content Areas - Health

18

- Asthma
- Cancer
- Coccidioidomycosis (valley fever)
- Heat-related illness
- Cardiovascular disease
- Lead exposure
- Maternal and infant health

Data snapshot: heat-related ED Visits

Heat-related ED visits in the California border region, all ages, 2005-12



Source: California Office of Statewide Health Planning and Development
http://cehtp.org/page/climate_change/query



Data gaps

Data gaps

21

- **Climate change** impacts on health
- **Water** location and contamination data
- **Heat-related illnesses** emerging public health priority
- **Valley fever** likely underreported
- **Birth defects data** not systematically reported
- **Pesticide illness and exposure** likely underreported
- **Pesticide use** on buildings and structures not systematically reported



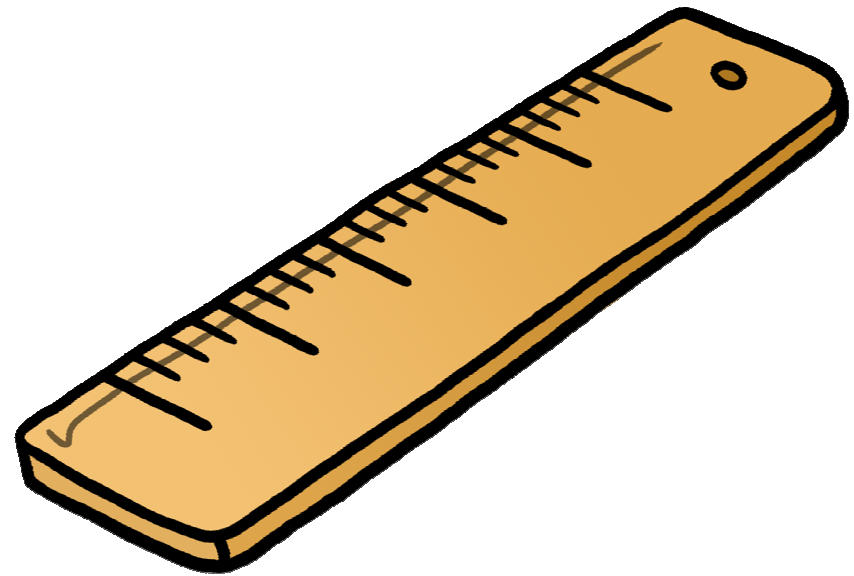
Recommendations

5 major recommendations...

1

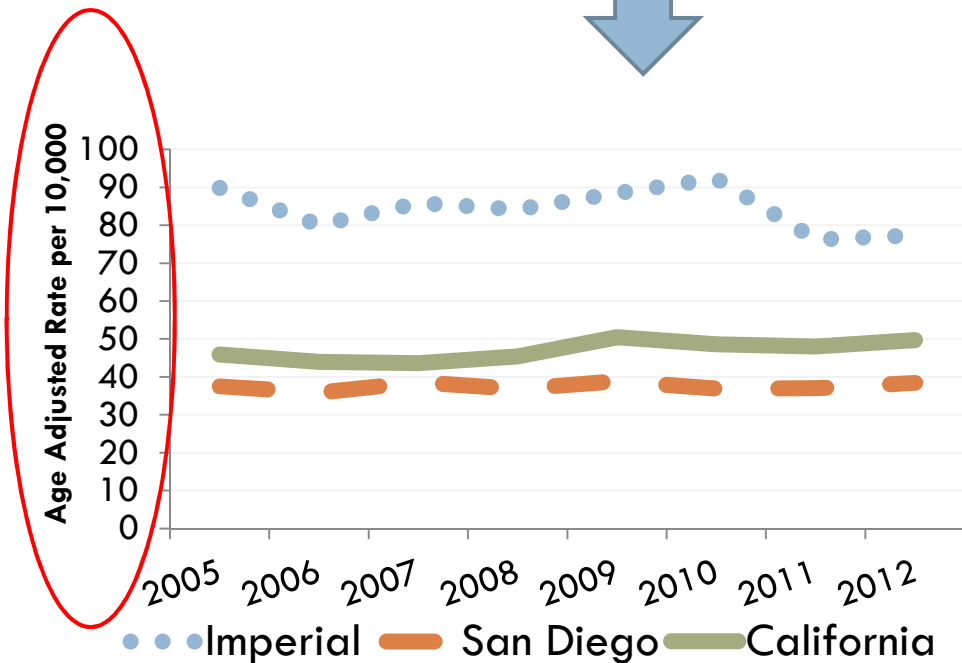
Create consistent data standards

- For meaningful data comparison
- Consistency in metrics
 - Over time
 - For the region

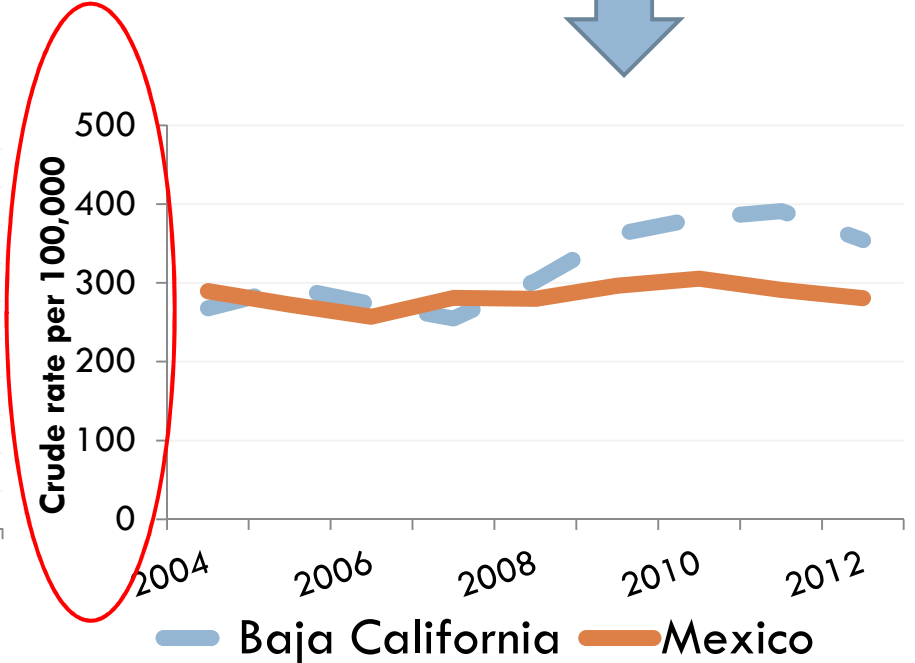


Differences in metrics

Asthma emergency department visits in the California Border region, 2005 - 2012



Asthma incidence rates in Baja California and Mexico, 2005 - 2012



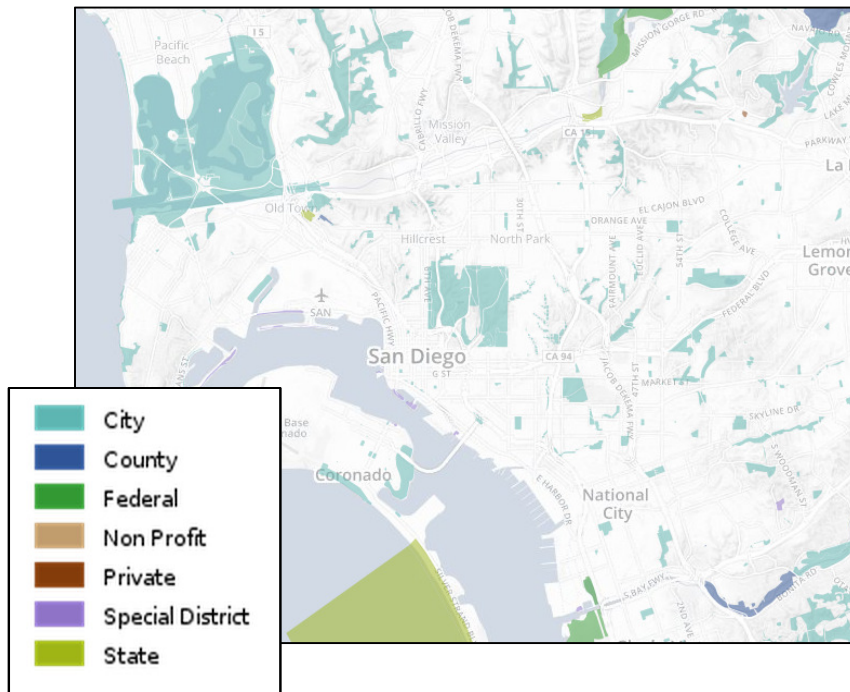
Source: California Office of Statewide Health Planning and Development. Accessed at www.cehtp.org/p/asthma

Source: Sistema Nacional de Vigilancia Epidemiológica - <http://www.epidemiologia.salud.gob.mx/anuario/html/anuarios.html>

Differences in data definition

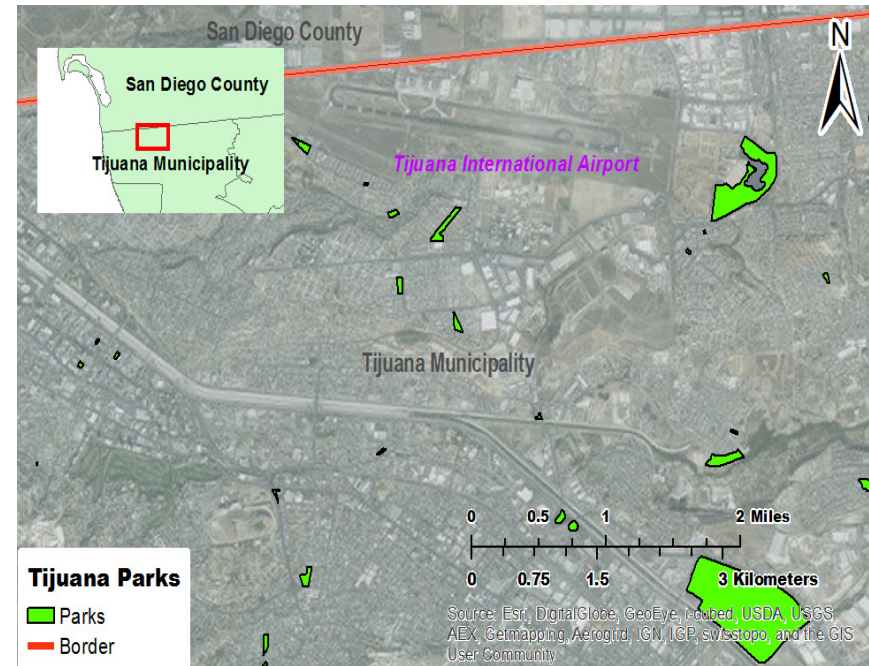
25

San Diego area



Source: California Protected Areas Database
www.calands.org/data

Tijuana



Source: Instituto Nacional de Estadística y Geografía
www.inegi.org.mx/est/scince/scince2010.aspx

2

Make data publicly available

- For a range of users
- Machine-readable
- Easy to extract, transform, process



Data collection and reporting

27

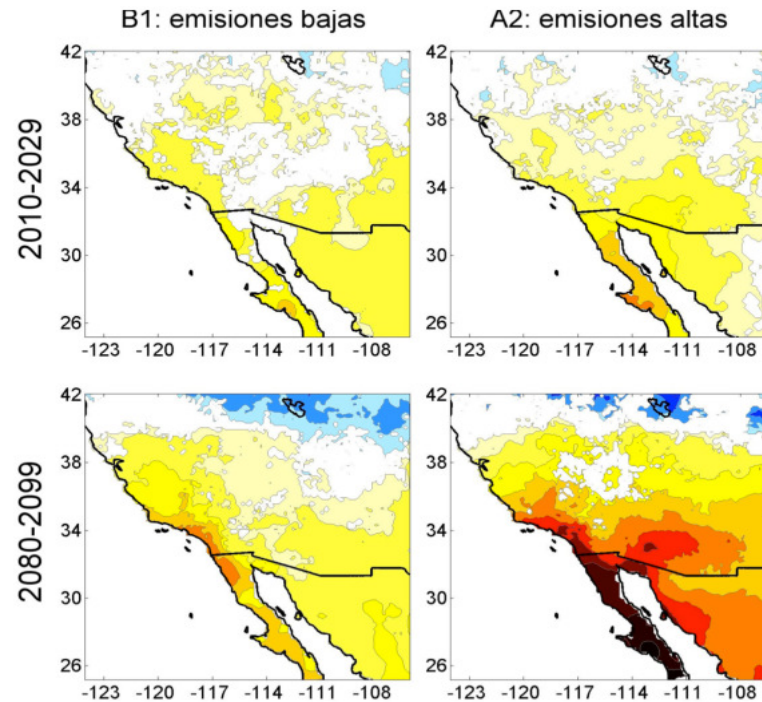
Birth defects per 10,000 children under 1 yr (2012)	Baja California	San Diego County	Imperial County
Anencephaly	4.0	?	?
Spina bifida	2.3	?	?
Cleft lip	5.4	?	?

Source: Sistema Nacional de Vigilancia Epidemiológica
<http://www.epidemiologia.salud.gob.mx/anuario/html/anuarios.html>

Sistema Nacional de Información en Salud
<http://www.sinais.salud.gob.mx/descargas/zip/anuario2009.zip>

Data usability

28

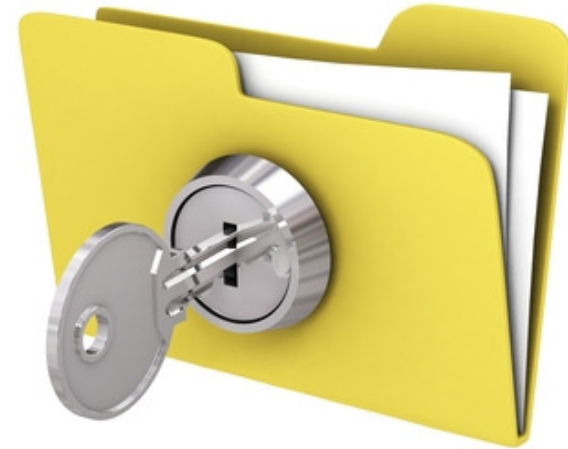


Source: Programa Estatal de Acción ante el Cambio Climático de Baja California - <http://peac-bc.cicese.mx/datosclim/dcbc.php>.

3

Increase data documentation

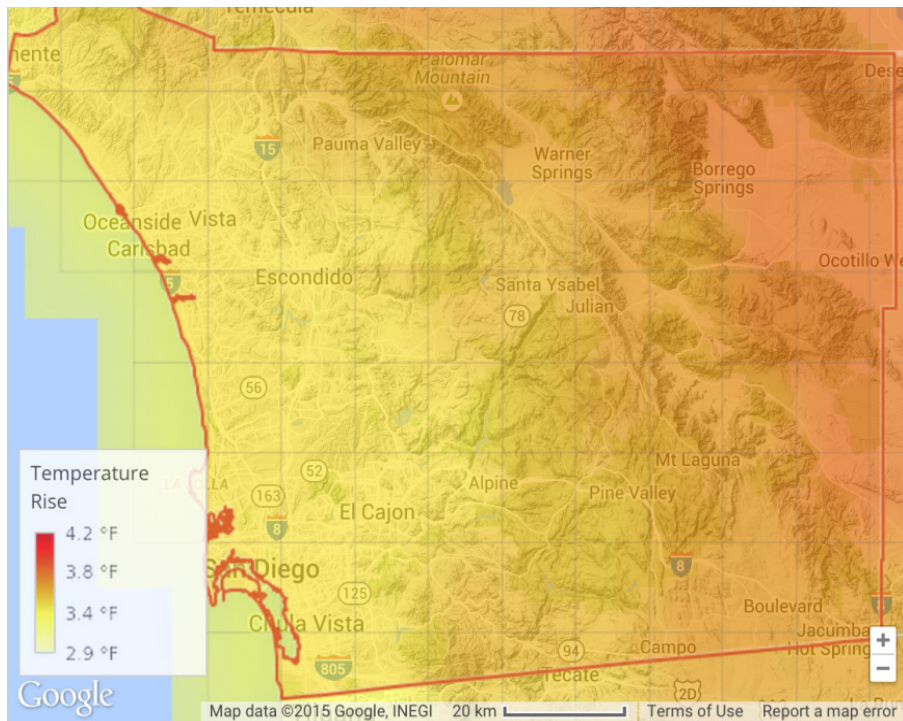
- Standardized codebooks
- Data dictionaries
- Metadata



Data communication

30

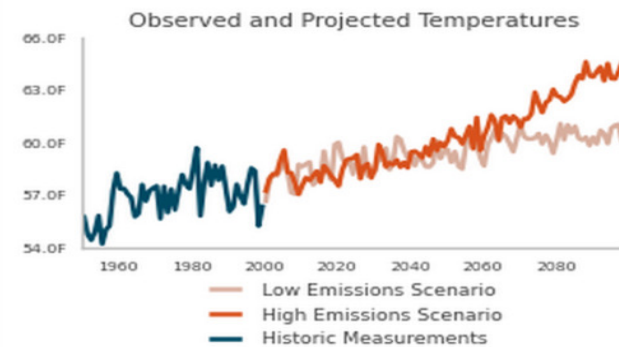
San Diego County



 SAN DIEGO COUNTY

The information in the chart below corresponds to the selected area on the map (outlined in orange).

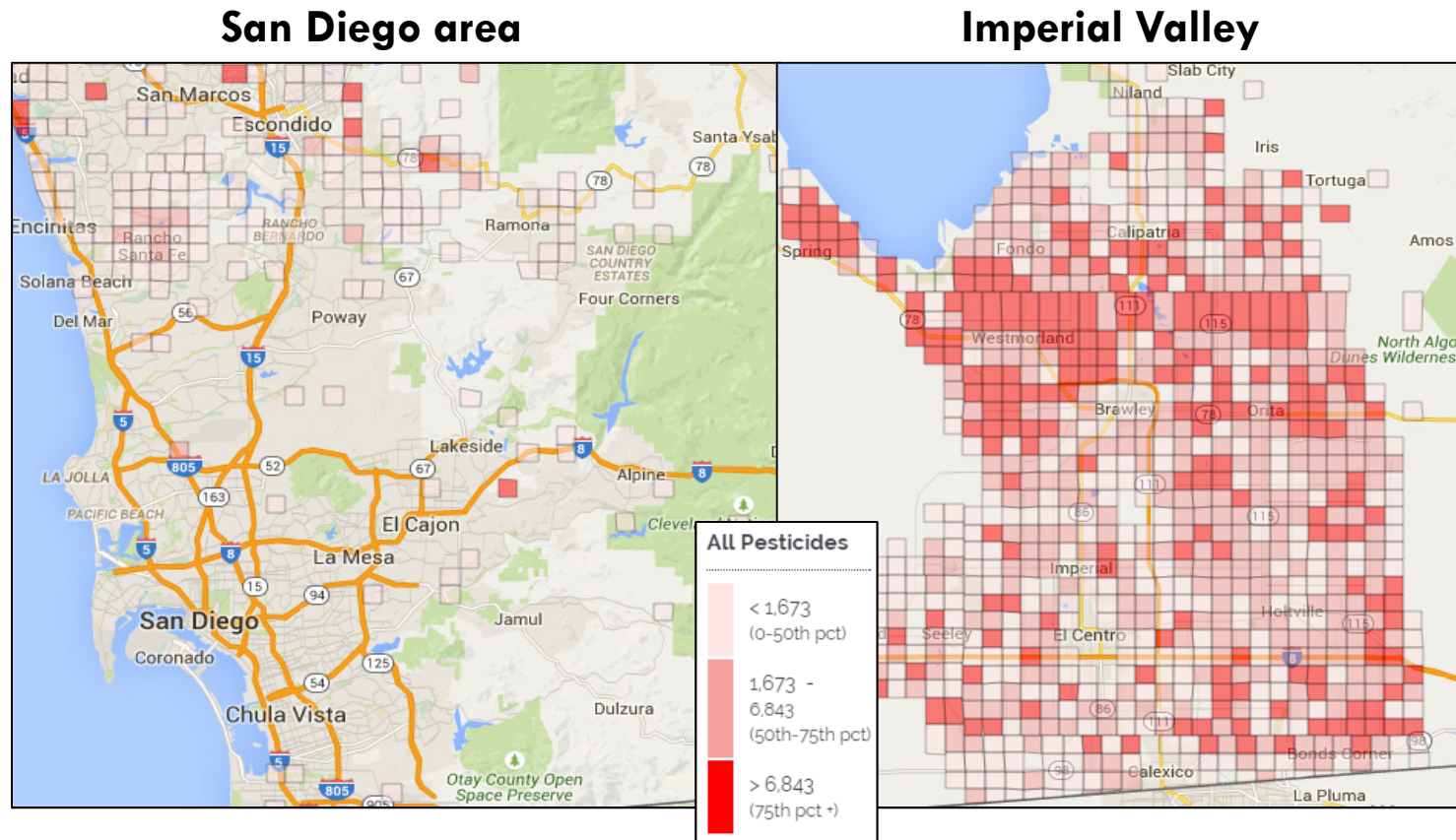
Historical Average	57.4 °F
Low-Emissions Scenario:	60.5 °F +3.1 °F
High-Emissions Scenario:	63.2 °F +5.8 °F



Source: CalAdapt: <http://cal-adapt.org/>

Provide accessible data access

31



Source: CDPR Pesticide Use Reporting System. Accessed at http://www.ehib.org/tool.jsp?tool_key=18

4

Increase data relevance

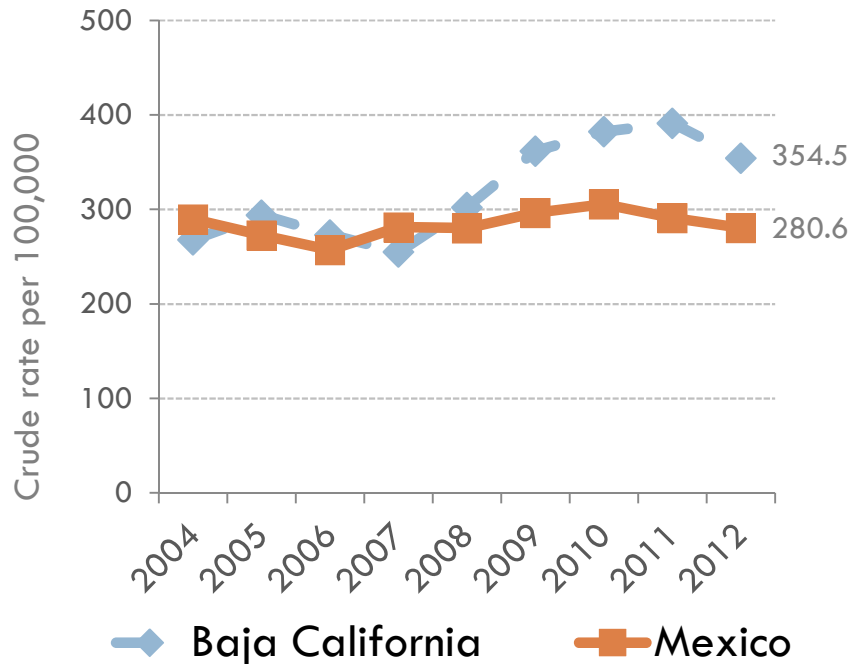
- Geographies relevant to local communities



Lack of spatial resolution

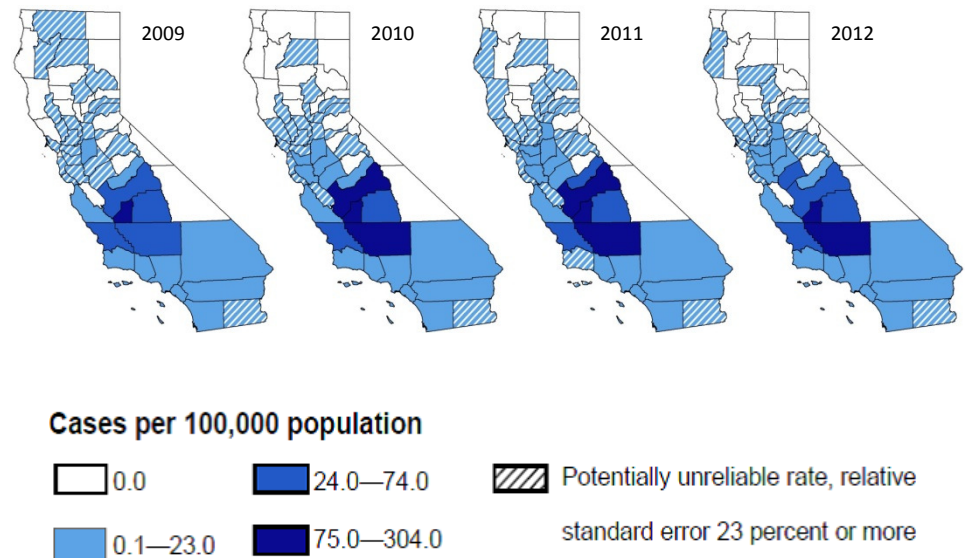
Just two examples...

Asthma incidence rates in Baja California and Mexico - all ages, 2005-12



Source: Sistema Nacional de Vigilancia Epidemiológica
www.epidemiologia.salud.gob.mx/anuario/html/anuarios.html

California county-specific coccidioidomycosis (valley fever) rates - all ages, 2009-12



Source: California Department of Public Health -
www.cdph.ca.gov/healthinfo/discond/Pages/Coccidioidomycosis.aspx

5

Create a single centralized data system

- Ensure data coordination for actionable data
- An open data portal to better serve users



The EHTP model

35

- The National Environmental Health Tracking Program provides a model to follow



Providing data accessibility for

- *Tracking issues*
- *Targeting interventions*
- *Monitoring impacts*

Data for action

36

Children are more vulnerable than adults to environmental hazards.

We can't take action without data.

Thank you!

Questions?