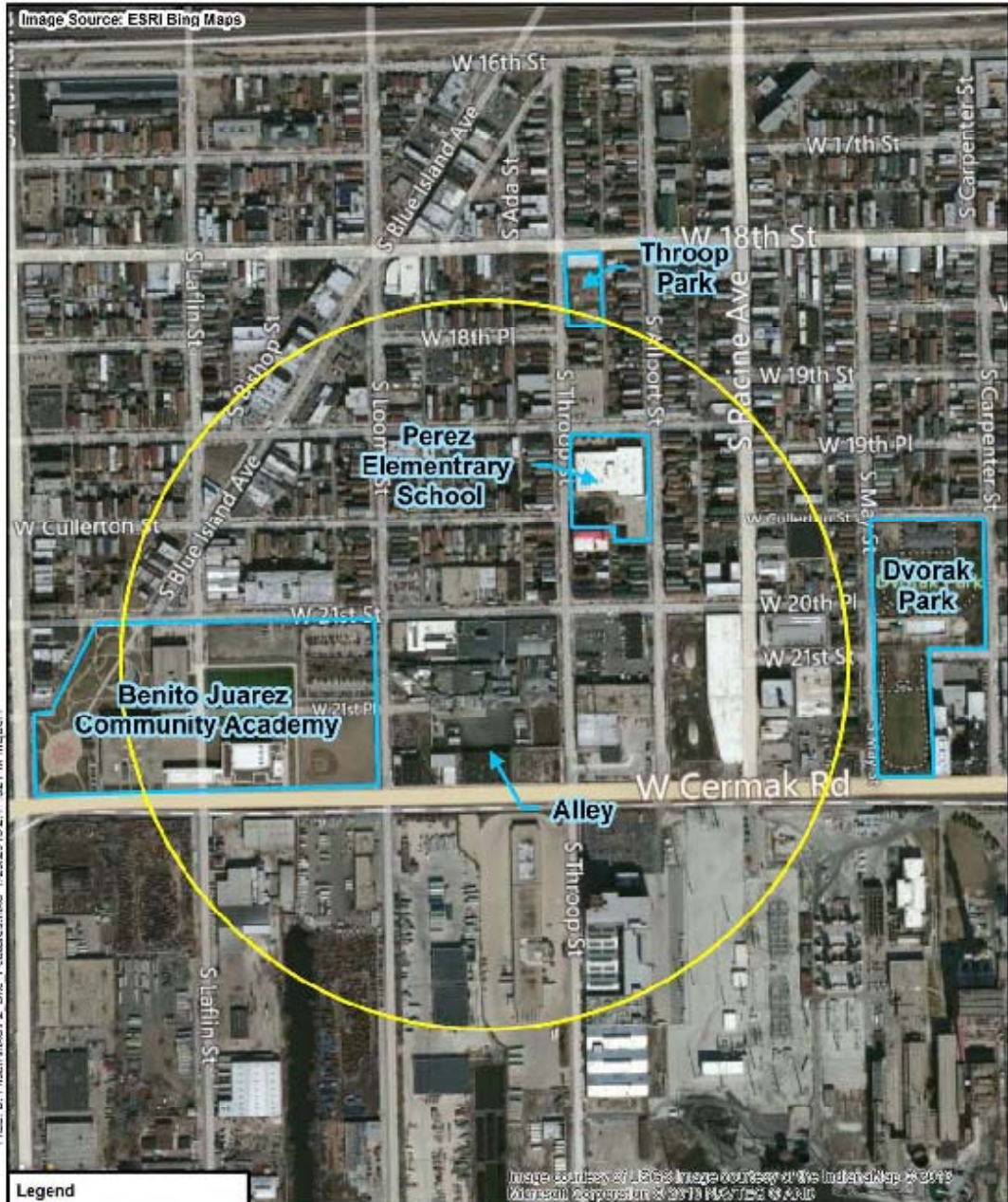




**Pilsen Area Soils Site
Chicago, IL.
Lab Results Soil Sampling**



FILE: D:\H\hemmod\F2_Site_Features.mxd 1/29/2013 2:17:02 PM msagch

Image courtesy of USGS. Image courtesy of the Indiana Map & GIS
 Metadata Repository & 2013 MW752 & 430

Legend

- Estimated/Initial Site Boundary
- Site Features

0 650

Prepared for:
U.S. EPA REGION V

Contract No.: EP-S5-08-04

Prepared By:
WESTON SOLUTIONS, INC

750 E. Banker Court

Figure 2
 Site Features Map
 Pilsen Area Soil Site

FILE: D:\Pilsen\mxd\16_Proposed_Sampling_RR.mxd 1/15/2013 4:17:28 PM mejaom

Image Source: ESRI Bing Maps



Legend

- Proposed Railroad Area Sampling Location (20 Locations)
- December 2012 Sampling Location
- Railroad Sampling Section

0 80 Feet

 Prepared for:
U.S. EPA REGION V

Contract No.: EP-S5-06-04
TDD: S05-0001-1211-002
DCN: 2038-4H-BEKM

 Prepared By:
WESTON SOLUTIONS, INC

750 E. Bunker Court
Suite 500
Vernon Hills, Illinois 60061

Figure 6
Proposed Sampling Location Map - Alley
Pilsen Area Soil Site
Chicago, Cook County, Illinois

Alley Description

- Soil samples collected on Dec. 19, 2012 in the Alley (running East to West) connecting Loomis Street and Throop Street, south of West 21st Street and north of West Cermak Road, Chicago, Illinois.
- The Alley is about 600 feet long and 15 feet wide in length and is roughly paved over 1/3 of its length from the east side.



Alley Soil Sampling Method

- Borings were advanced using a Geoprobe to a depth up to four feet bgs at each proposed location.
- Field screening to the identify samples for lab analyses were conducted using a handheld XRF analyzer.
- 10 Grab samples and 10 composite samples plus duplicates were sent to the lab.

Surface and Subsurface Soils Analyses

- Surface and Subsurface Soils
- Total RCRA metals (silver, arsenic, barium, cadmium, chromium, mercury, lead, and selenium) plus antimony, copper, tin, and zinc
- Total lead
 - Coarse Fraction (grain size > 250 μm)
 - Fine Fraction (grain size < 250 μm)
- Lead bioavailability
- pH
- Moisture content
- TCLP lead
- EPA Method SW-846 6020

Image Source: ESRI Bing Maps

Criteria Levels			
Chemical	RML-Res	RML-Ind	Unit
Lead	400	800	mg/kg



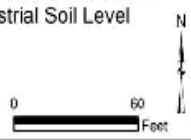
Legend

- Composite Sampling Location with Analytical Exceedance
- Composite Sampling Location with No Analytical Exceedance

Criteria Key

- 1 = Exceeds USEPA RML-Residential Soil Level
- 2 = Exceeds USEPA RML-Industrial Soil Level

Note: Soil sample collected at each location (●), then homogenized with connected location to obtain the composite sample.



Prepared for:
U.S. EPA REGION V
Contract No.: EP-S5-06-04
TDD: S05-0001-1211-002
DCN: 2038-IH-BEKM

Prepared By:
WESTON SOLUTIONS, INC
750 E. Bunker Court
Suite 500
Vernon Hills, Illinois 60061

Figure 3
Composite Sample Fine Lead Exceedances Map
Pilsen Area Soil Site
Chicago, Cook County, Illinois

The results : Lead contamination in soil is present in the Alley above industrial EPA Removal Management Levels (RMLs) from 0 to 24 inches

- 0 to 6 inches below the surface the highest concentration of lead in soil was 6600 mg/kg with an average of 2748 mg/kg.
- 6 inches to 24 inches below the surface the highest concentration of lead was 9300 mg/kg with an average of 4736 mg/kg.
- Antimony, arsenic, and copper were detected below or at the industrial scenario EPA RMLs.
- Lead is the primary contaminant of concern in the soil in the Alley.

Next Steps Pilsen Soils Site Assessment

- U.S. EPA is offer to sample the soil of Pilsen neighborhood residential and commercial properties for metals including lead.
- Purpose: Determine if air emissions containing lead and other metals from industrial activity may have settled over the years that poses an unacceptable health risk to people who live in the area.

Questions

- Ramon Mendoza, Federal On-Scene Coordinator
U.S. EPA Region 5
77 West Jackson
Chicago, Illinois 60604
Mail Code SE-5J
Office: 312-886-4314
Mendoza.ramon@epa.gov