

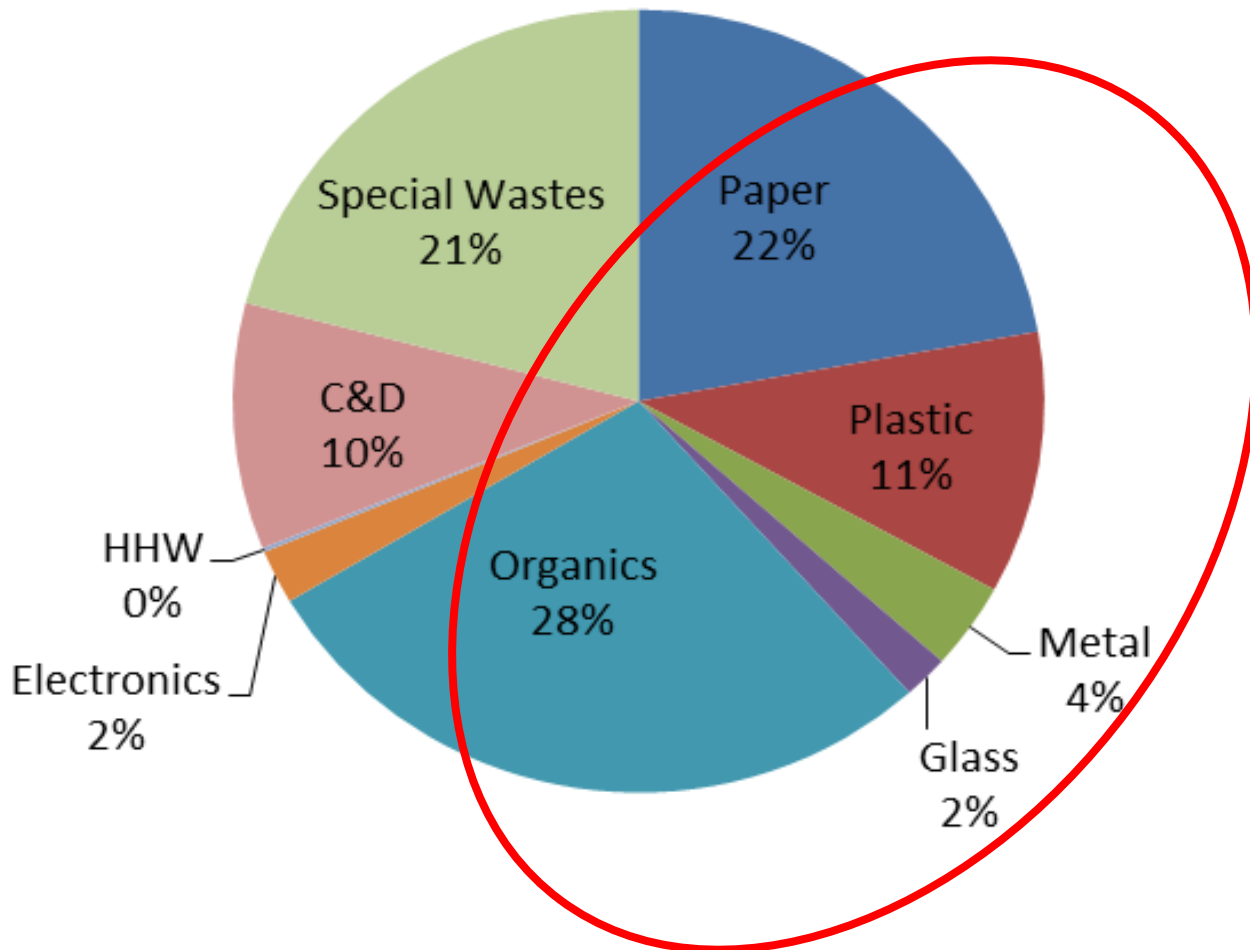


VERMONT'S UNIVERSAL RECYCLING LAW

Josh Kelly, Materials Management Section Chief
ANR Waste Management & Prevention Division

THE PROBLEM

Residential MSW 2013



**~50% of trash
could be
recycled/
composted**

2012 – BIG year for Vermont

Universal Recycling (Act 148) passes unanimously

**Hey, you
can compost
that!**



**That's
recyclable!**

Moving from “waste”





Materials Management



Comprehensive Solid Waste Leg.

- **Required Diversion (bans) = Motivation**
 - recyclables
 - leaf, yard, and clean wood
 - food scraps
- **Parallel Collection = Convenience**
- **Pay As You Throw = Incentive**
- **Recycling in Public Spaces = Lead by Example**



Baseline Recyclables

□ **Metal**

- Steel cans and containers
- Aluminum cans, pie plates, clean foil

□ **Paper**

- News paper, office paper
- Mail, magazines, paper bags, soft cover books
- Cardboard, boxboard

□ **Plastic**

- #1 & #2

□ **Glass**

- Bottles and Jars

Timing

MATERIAL	FACILITIES	HAULERS	BANNED
Recyclables	2014	2015	2015
Leaf & Yard	2015	2016	2016
Food Scraps	2017	2017	2014-2020
Clean Wood			2016

Food Scraps Summary

- Phases for larger food scrap generators, if there is a facility within 20 miles
 - 2014 > 104 tons/year **2 tons/wk**
 - 2015 > 52 tons/year **1 ton/wk**
 - 2016 > 26 tons/year **1/2 ton/wk**
 - 2017 > 18 tons/year **1/3 ton/wk**
 - **2020 all food scraps banned regardless of distance**



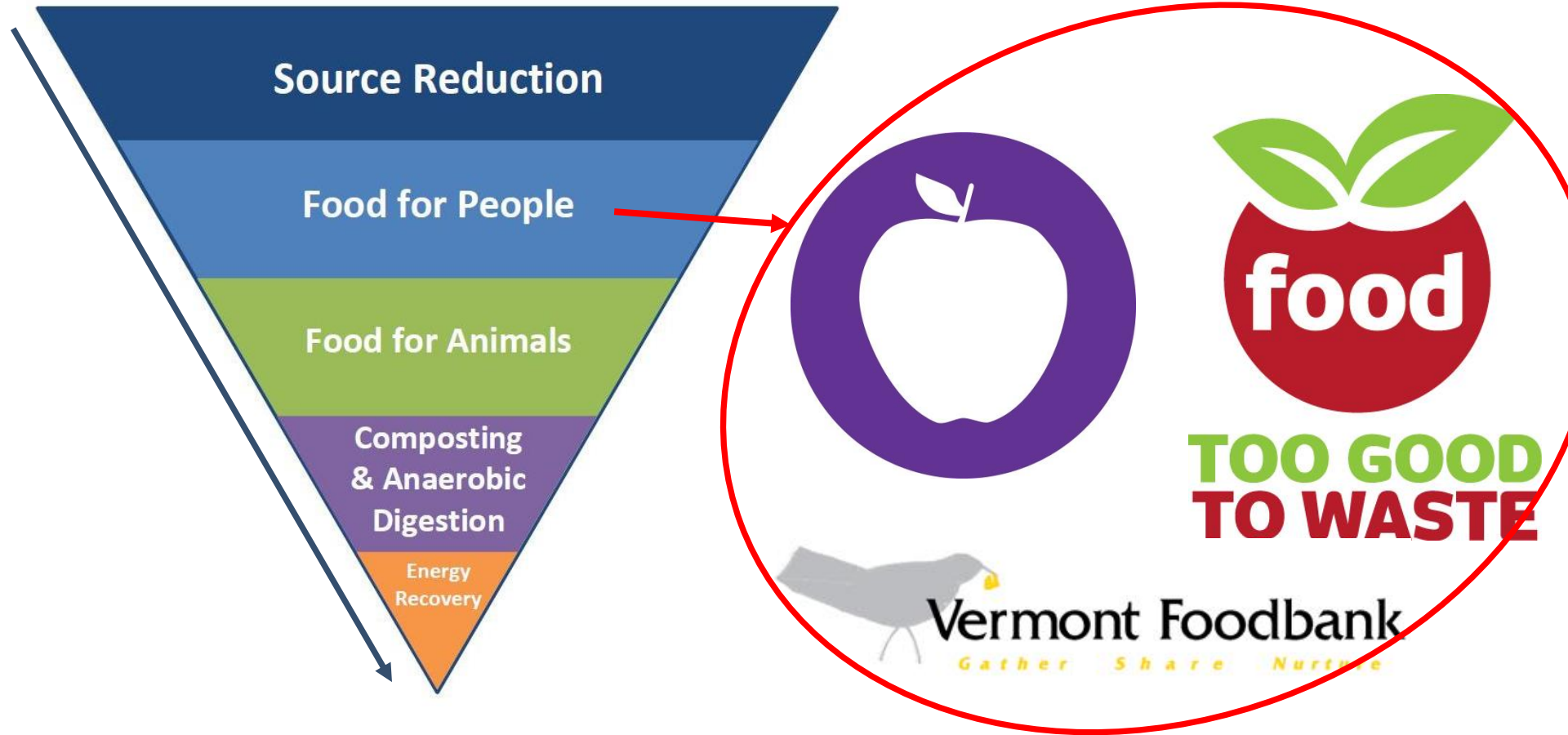
Food Scraps Details

- Residents need not compost meat and bones if they compost at home.
- Businesses/Institutions de minimis clause



Photo courtesy of CVSWMD

Universal Recycling Food Hierarchy



Bill Emerson Good Samaritan Food Donation Act (1996) – helps protect food donors from liability associated with donated food.

Some of What We've Done

- Hauler Meetings
- Town/District Meetings
- Industry Outreach
- Site Visits
- Letters & Phone Calls
- Outreach Materials
- Webinars
- Small Grants
- Partnerships & Collaboration



Tote washing. Photo courtesy of CVSWMD

Materials Management Map

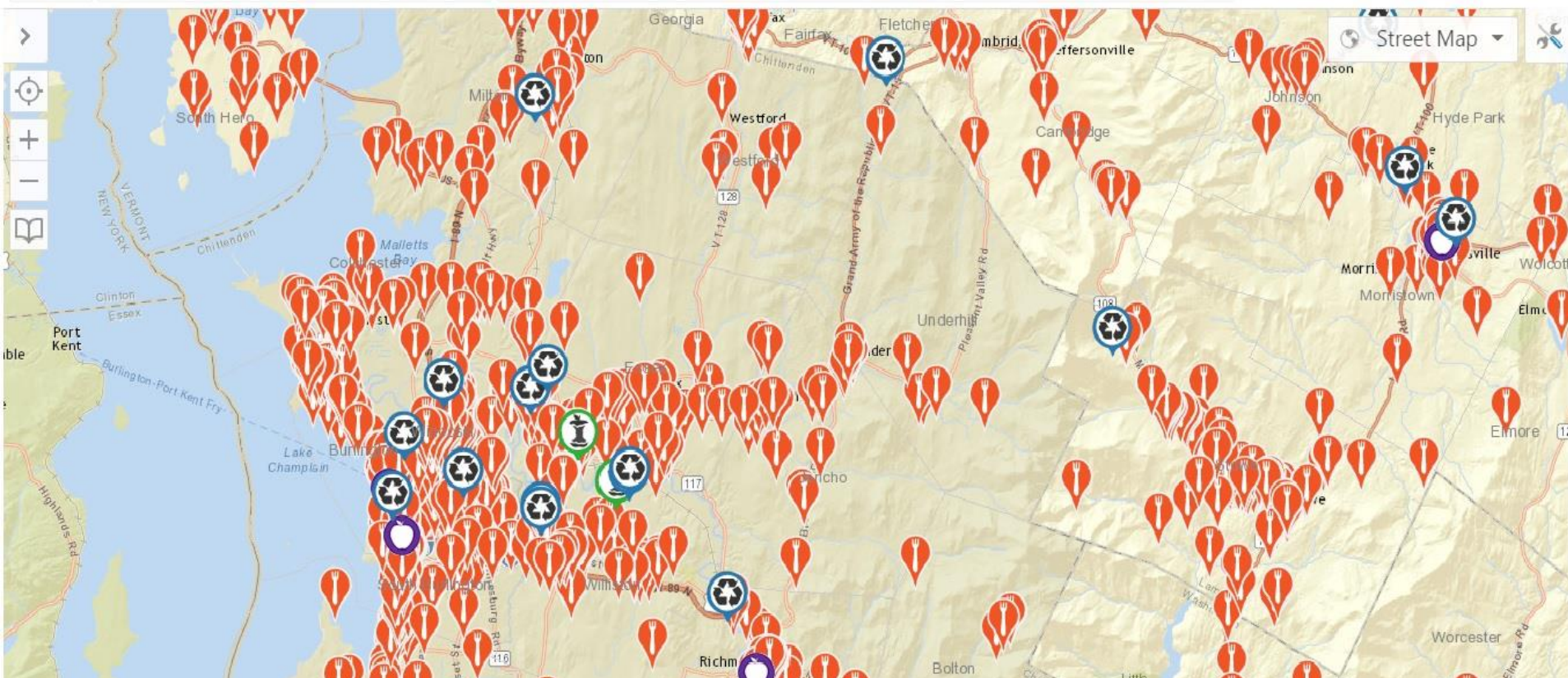
UNIVERSAL RECYCLING
Materials Management Map



Organic Tools Measure Drawing

Print Map Pan Zoom In Zoom Out Initial View Full Extent Zoom to Town Filter by Generator Type Filter by Scrap Tons Generated Filter by Facility Type Search for Facilities Near You Clear layer filters

Navigation Queries



Food Scrap Generator



CHELSEA ROYAL DINER

Food Establishment

Restaurant

Estimated Tons Per Week: 0.63

Physical Address:

487 MARLBORO ROAD

BRATTLEBORO

05303

Telephone Number:

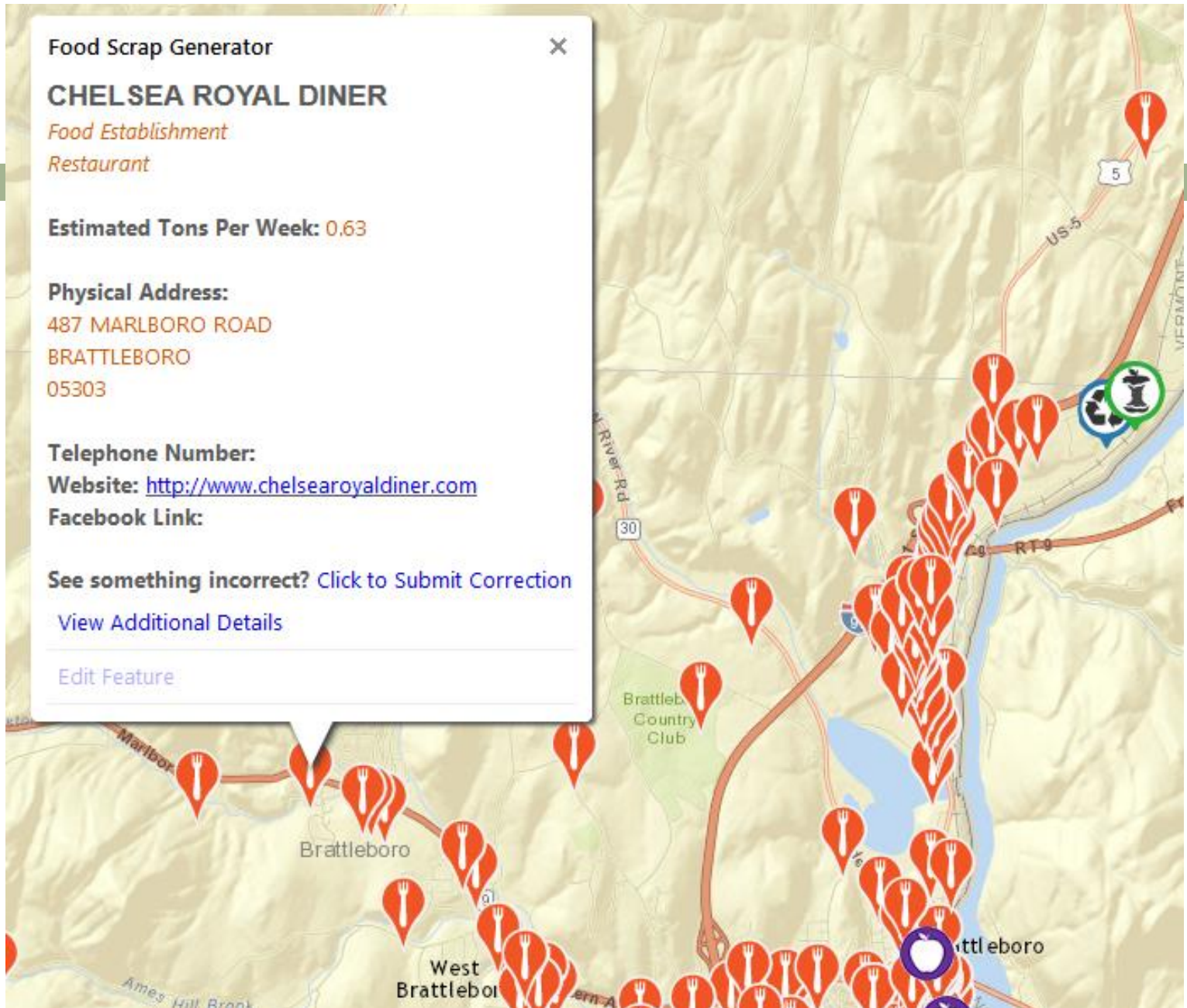
Website: <http://www.chelsearoyaldiner.com>

Facebook Link:

See something incorrect? [Click to Submit Correction](#)

[View Additional Details](#)

[Edit Feature](#)



Facility



Hartford C&D Landfill & Transfer Station

Facility Type: Transfer Station

Accepts:

Recycling: YES

Trash: YES

E-Waste: YES

HHW: NO

Food Scraps: NO

Clean Wood: NO

Leaf Yard Debris: YES

Specifics:

**Please call to confirm what materials are currently accepted before visiting.*

Physical Address:

[Get Directions](#)

2590 North Hartland Road

Hartford

05047

Telephone Number: 802-295-9353

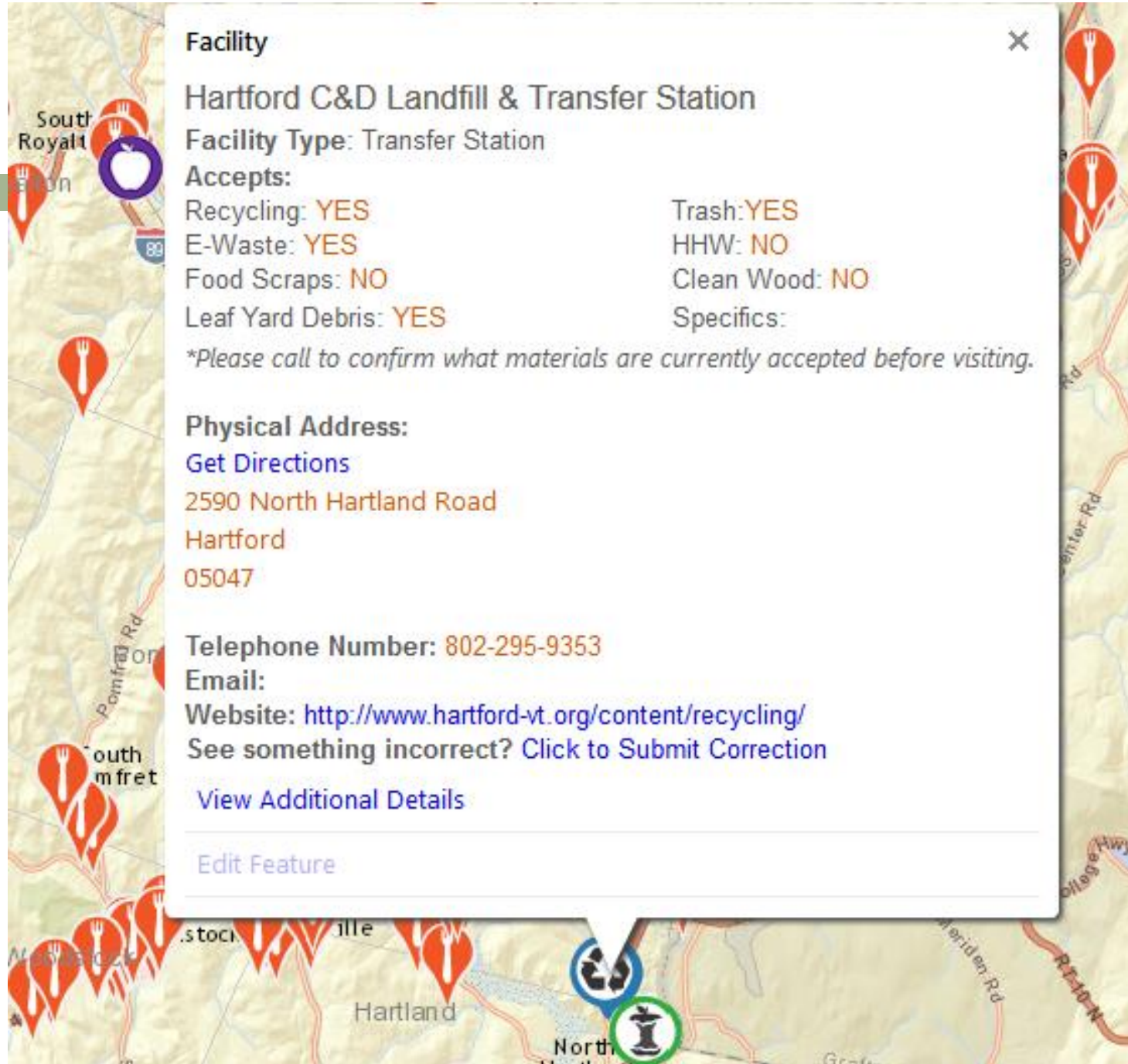
Email:

Website: <http://www.hartford-vt.org/content/recycling/>

See something incorrect? [Click to Submit Correction](#)

[View Additional Details](#)

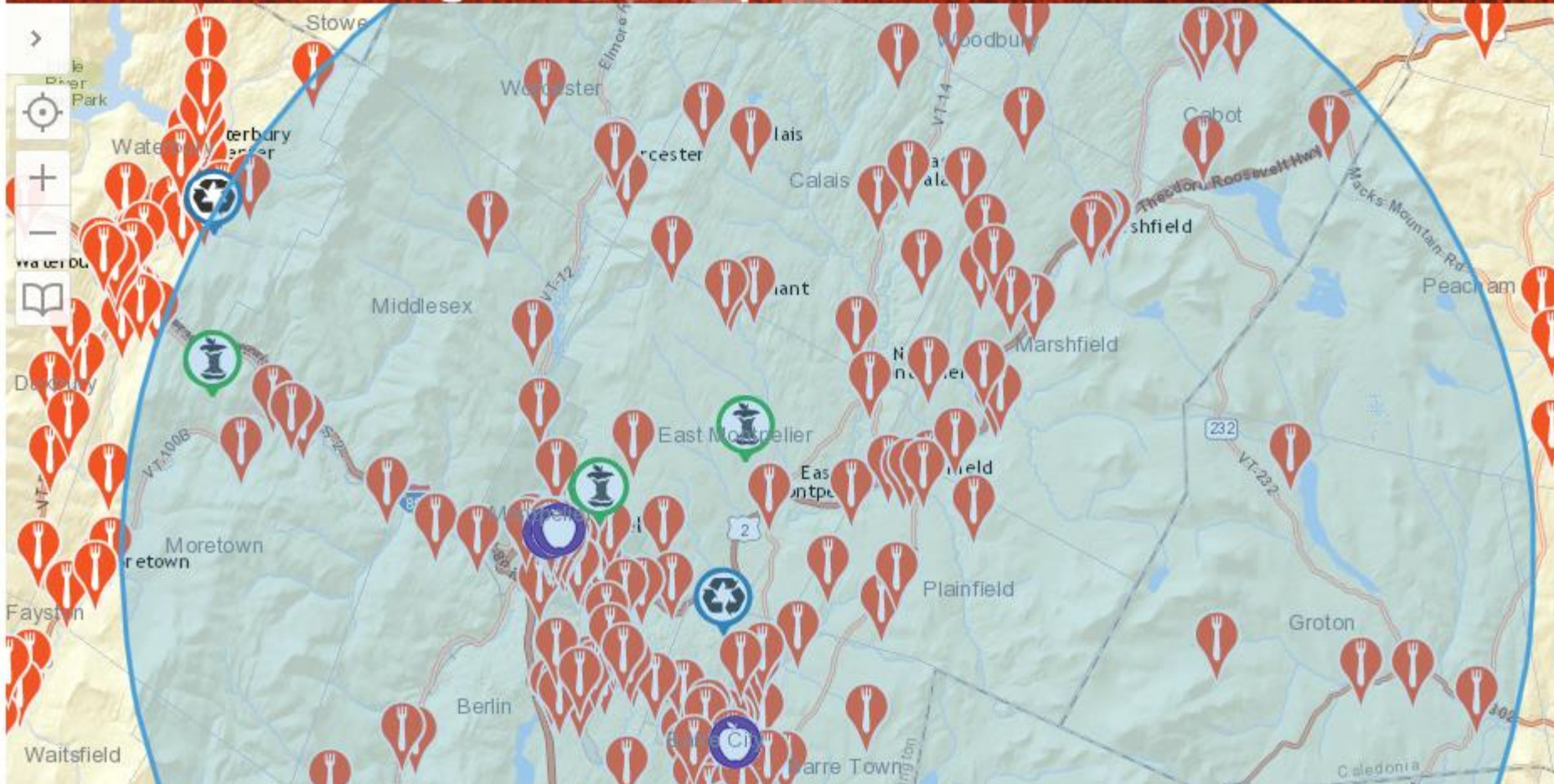
[Edit Feature](#)



20-mile radius tool

UNIVERSAL RECYCLING

Materials Management Map



How much food waste do you produce?



Restaurant

$$\underline{\# \text{ Seats} \times \text{Lbs./meal} \times \text{Meals/day} \times \text{days/wk} = \text{Lbs./wk}}$$
$$65 \quad \times \quad 1.0 \quad \times \quad 3 \quad \times \quad 7 \quad = \quad 1,365$$

0.68 tons/week = *estimated* 35 tons/year

How much food waste do you produce?



Institution

(prison, nursing home, hospital)

$$\# \text{ Beds} \times \text{Lbs./meal} \times \text{Meals/day} \times 7 \text{ days/wk} = \text{Lbs./wk}$$
$$100 \quad \times \quad 0.5 \quad \times \quad 3 \quad \times \quad 7 \quad = \quad 1,050$$

0.53 tons/week = **estimated** 27 tons/year

Where Things Stand

RECYCLING (ban 3 months in effect)

- All Facilities accept recyclables
- Haulers are rolling out recycling services
- Recyclables are up!

ORGANICS (off to a great start)

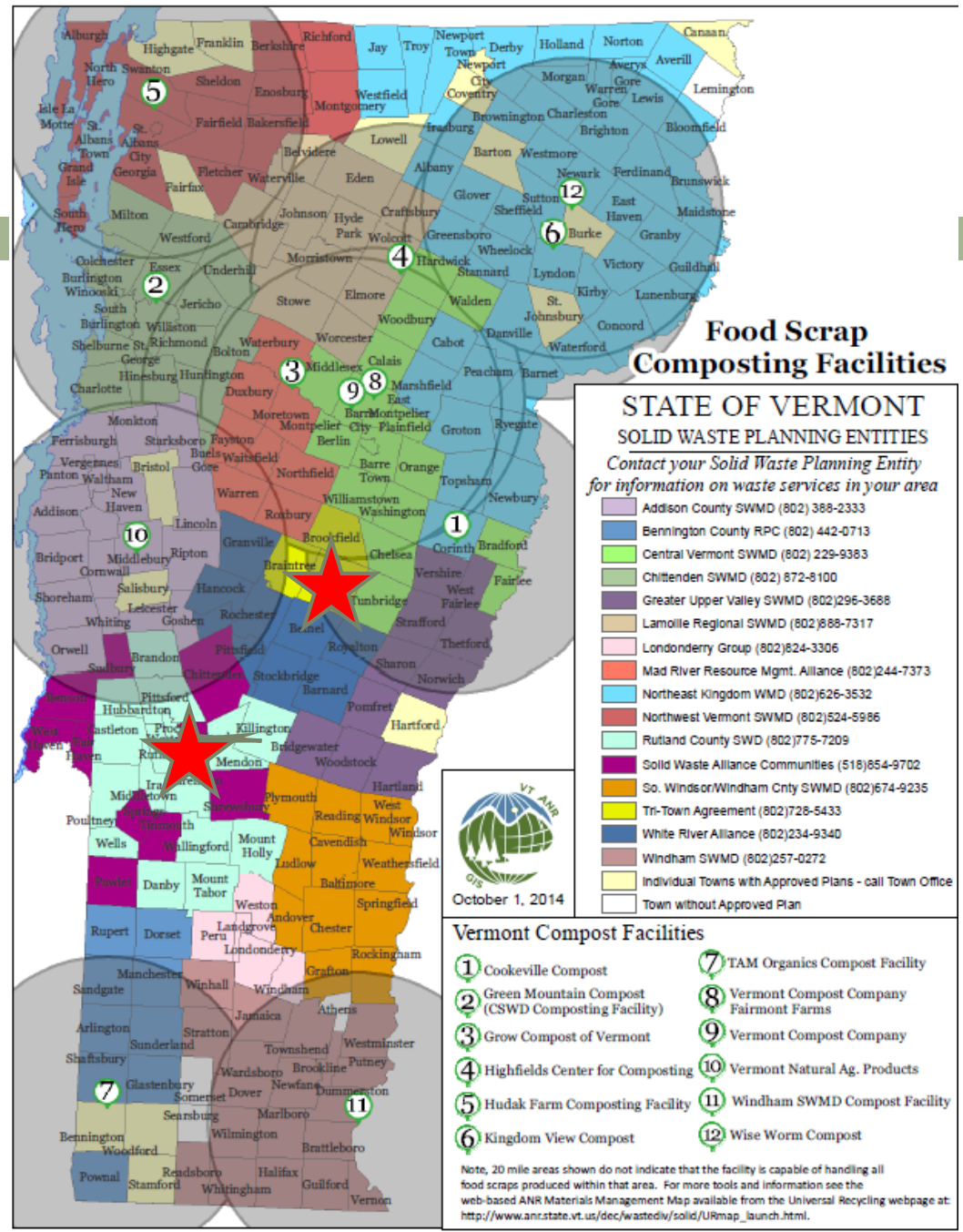
- 10 Composters, 11 Haulers, up to 17 farm ADs
- 2 ton generators diverting; 1 tons outreach ongoing
- Leaf & yard collection growing rapidly
- Food Donation up nearly 30%!!!

Compost etc.

Two AD Pilots in Gap Areas

 Rutland

 Randolph



+ & -

CHALLENGES

- Lack of Funding
- Down Recycling Markets
- Rural State/Economies of Scale

OPPORTUNITIES

- More Attention Than Ever
- Partnerships, Connections, Leverage
 - ▣ (compost/AD coexistence)
- Rural State = Space & Existing Farm Infrastructure

Learning Lessons

- Engage Stakeholders Early and Often
- Ensure Level Playing Field
- Provide a Path Forward for Facilities
- Watch Markets
- Enforce Carefully
- Use Funding to Incentivize Greatest Needs
- Listen and Adapt

Use the SYMBOLS!

- State Standardized Symbols available for free.
- Search web for “**Universal Recycling VT**”



josh.kelly@state.vt.us

802.522.5897

Follow us on Twitter -- @VTrecycles