

DWMAPS

Drinking Water Mapping Application for the Protection of Source Waters

Overview

The Drinking Water Mapping Application for Protecting Source Waters (DWMAPS) is an internet-based geographic information systems (GIS) tool for drinking water source protection and assessment. While DWMAPS is currently a tool for EPA use, the EPA Office of Ground Water and Drinking Water is working to provide availability of DWMAPS to state agencies, drinking water utilities, source water collaboratives, watershed groups, and others. DWMAPS will include a nationwide mapping tool, a customizable source water protection planning tool, and a suite of data exchange services to help assess safe drinking water. Several versions of DWMAPS will be released starting in the fall of 2015.

DWMAPS helps users to:

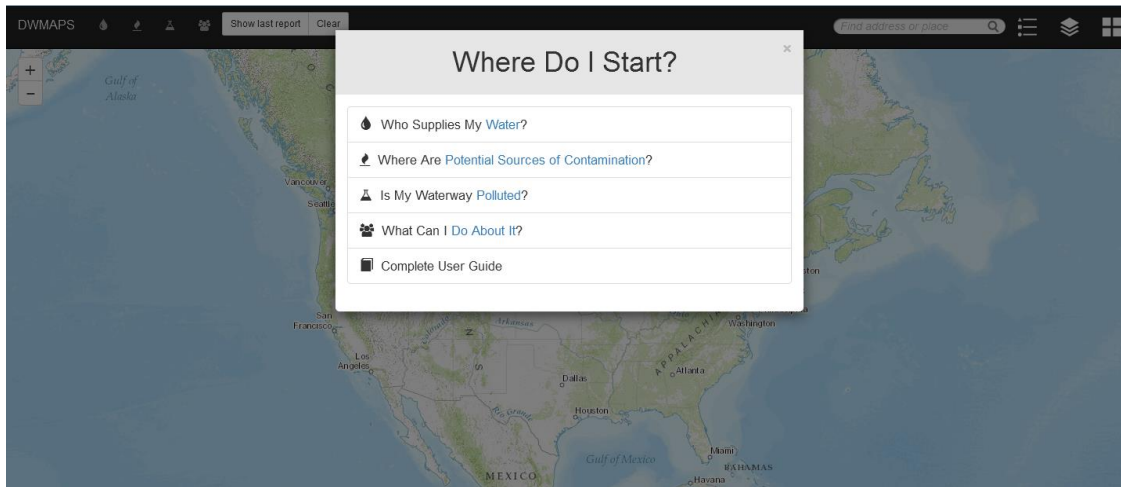
1. **Identify potential sources of contamination** in locations defined by users;
2. **Find data to support source water assessments and plans** to manage potential sources of contamination;
3. **Evaluate accidental spills and releases**, identifying where emergency response resources for accidental releases must be readily available;
4. **Promote compliance with spill prevention and planning requirements** in high-risk locations;
5. **Promote integration of drinking water protection activities** with other environmental programs at the EPA, state, and local levels; and
6. **Assess the effects of climate change** on source water.

What features will DWMAPS include?

Analyses and Services	Data
<ul style="list-style-type: none">• Finds sources of contamination within range of any point of interest (e.g., public water system)<ul style="list-style-type: none">○ Within __ hours upstream (user selects)○ Within __ miles upstream (user selects)○ Within __ mile radius (user selects)• Maps watersheds critical to drinking water supply by<ul style="list-style-type: none">○ % of watershed covered by a source water protection area○ Density of public water systems per watershed• Maps key Clean Water Act (CWA) information to identify areas where the CWA can protect drinking water.• Allows users to explore and locate nearby source water protection projects that are working to restore water bodies.• (State and utility versions) Identifies and maps water systems by population served, health-based violations, and other characteristics.• Links users to additional information through databases, web apps, toolkits, and other resources.	<p>Public version:</p> <ul style="list-style-type: none">• Point Source facilities (NPDES, CERCLA, RCRA, Combined Sewer Overflow...), Nonpoint Source areas, and land use indicators• Density maps of surface and groundwater systems within HUC12 watersheds• Impaired waters, assessed waters, TMDLs• Additional risk layers may include pipeline safety, hazardous waste transport lines, karst, arsenic in soils, floodplains, and more. <p>State and utility versions:</p> <ul style="list-style-type: none">• Public Water System locations (intakes, reservoirs, wells, and springs)—access by CDX log-in for sensitive data.• Source Water Protection Areas (SPAs)

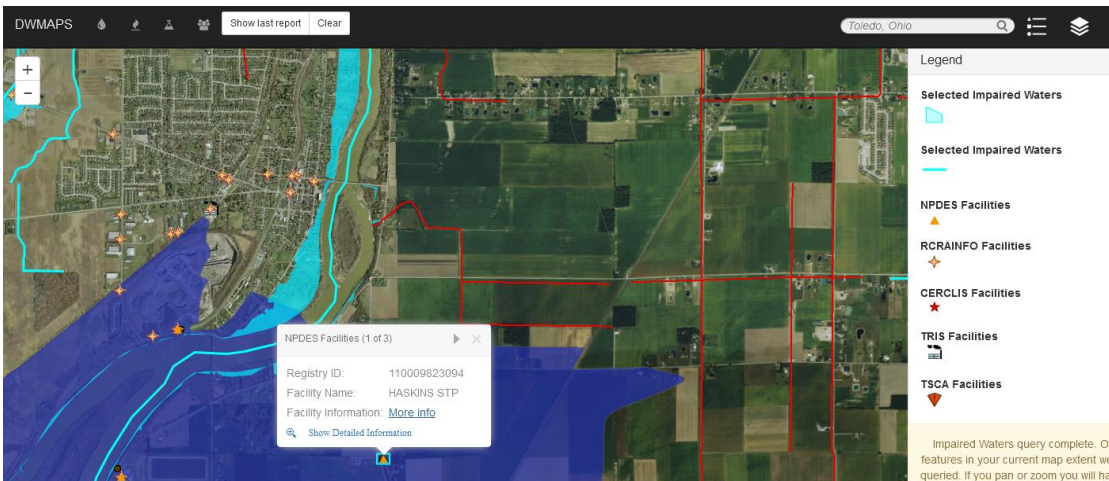
EXAMPLE

Basic interface guides users through map queries and data features



EXAMPLE

Data layers allow users to map potential sources of contamination alongside watersheds critical to drinking water, floodplains, and other features.



EXAMPLE

Search functions allow users to quickly locate facilities discharging a specific contaminant or Clean Water Act areas of concern.

