



Climate Change and Your Health Go Hand in Hand

U.S.-Mexico Border Environmental Health Training for
Promotores

Nancy Palate
California Department of Public Health



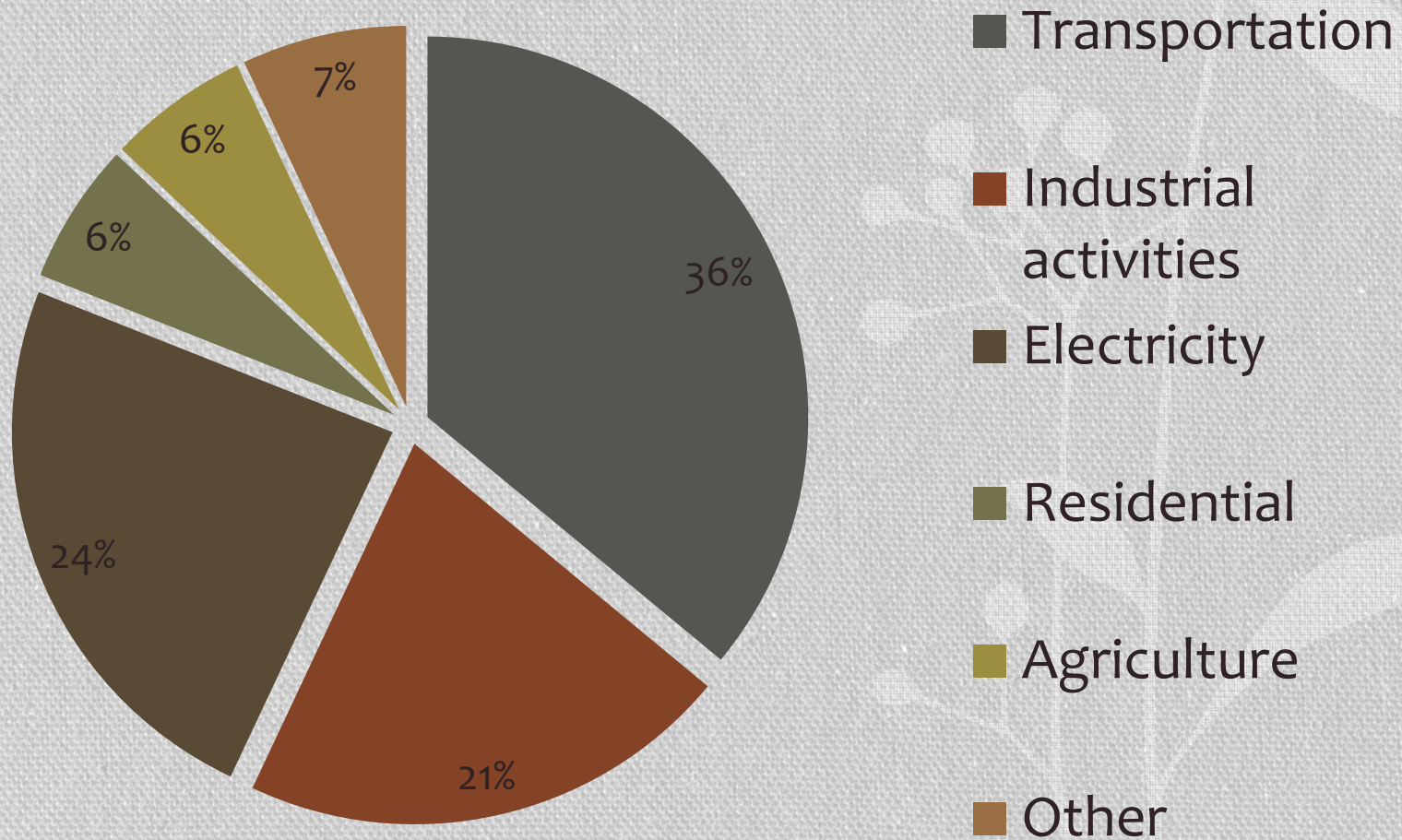
What is Climate Change?



Image source: tn173.com

Sources of green house gases in California

Fuentes del calentamiento global

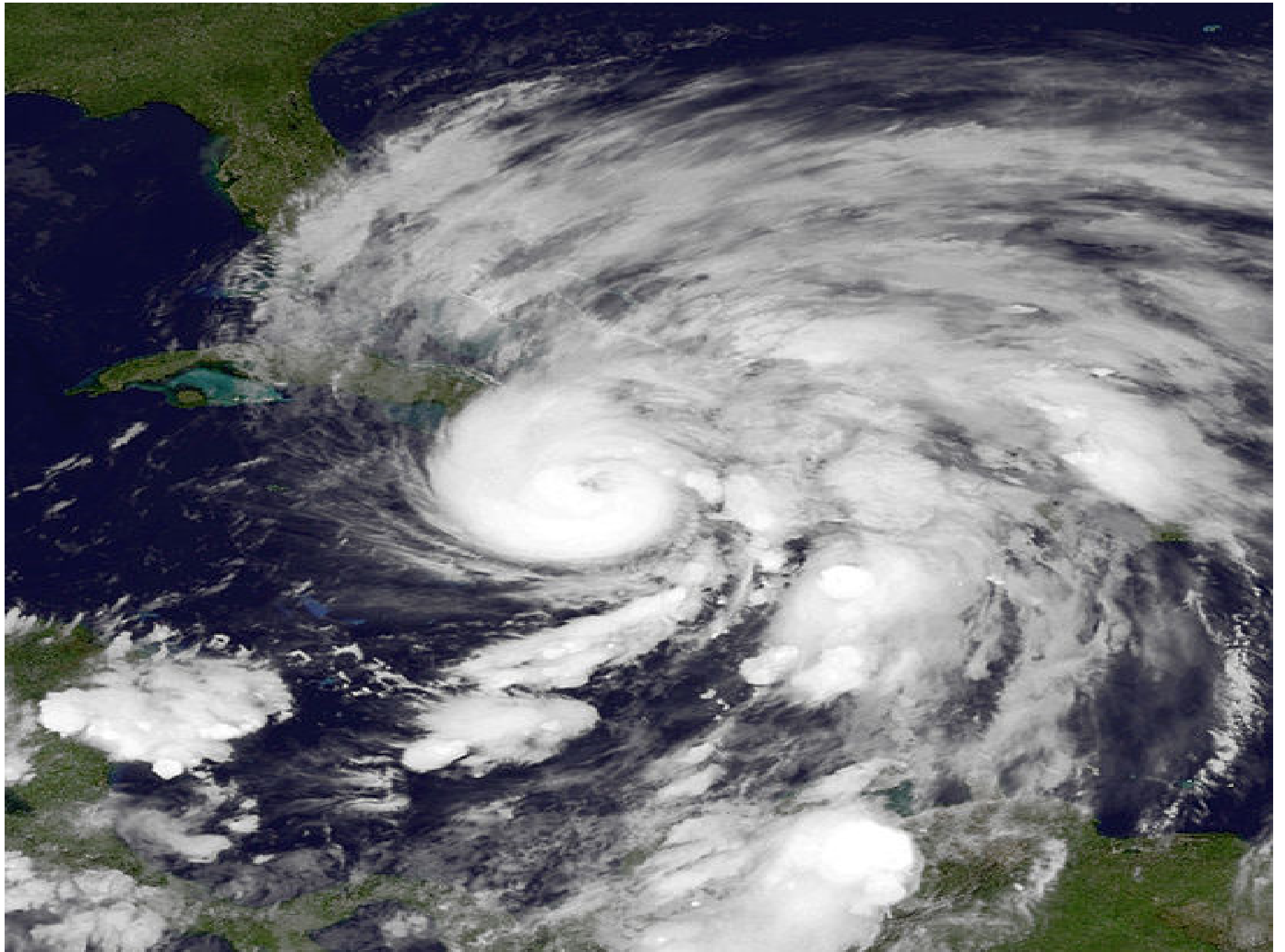
















How are climate change and
health related?




Rising temperatures

- 
- Heat-related illnesses
 - Cardiovascular stress
 - Kidney stones
 - Breathing problems
 - Injuries
 - Premature death

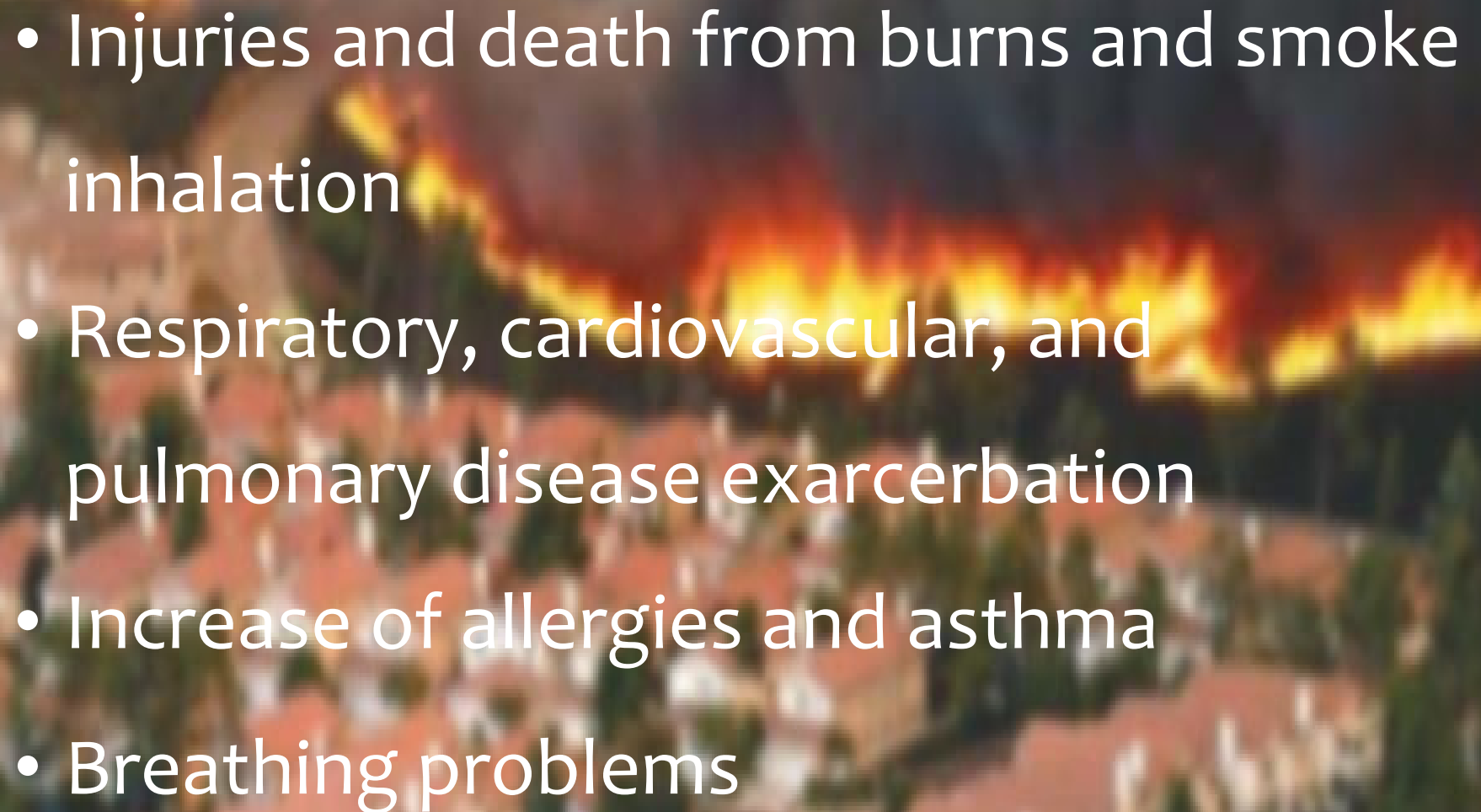
A photograph of a dry, cracked landscape. The ground is covered in a dense network of dark, irregular cracks, forming a mosaic-like pattern. In the foreground, several dead, skeletal trees with bare, dark branches are scattered across the cracked earth. The background shows a flat, arid landscape under a clear, pale blue sky. The overall scene conveys a sense of severe drought and environmental hardship.

Drought

- 
- Hunger
 - malnutrition
 - Food- and water-borne disease
 - Emergence of new contagious and vector-borne disease

Wildfires



- 
- Injuries and death from burns and smoke inhalation
 - Respiratory, cardiovascular, and pulmonary disease exacerbation
 - Increase of allergies and asthma
 - Breathing problems

Air Pollution

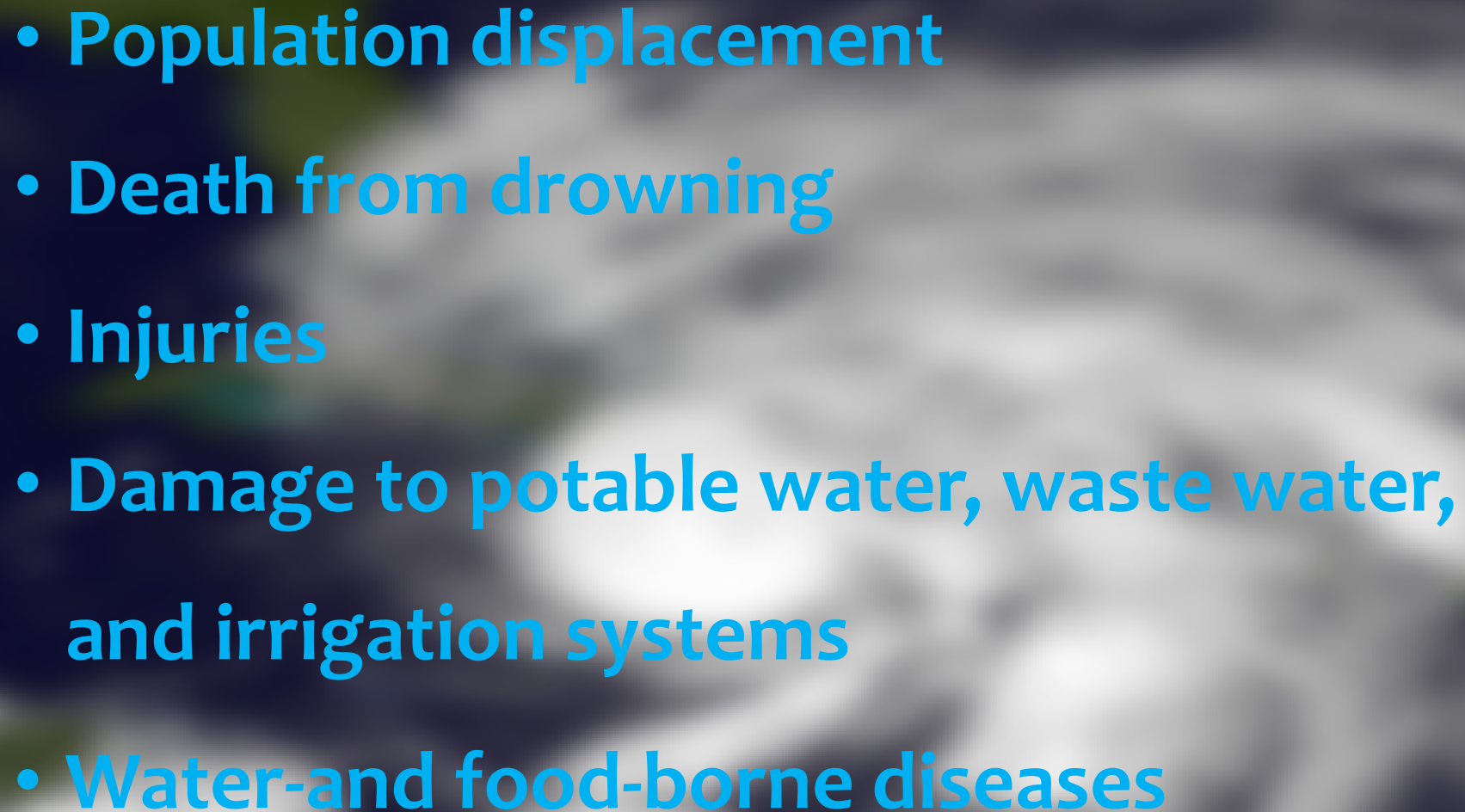


- Respiratory, cardiovascular, and pulmonary disease exacerbation
- Increase of allergies and asthma
- Breathing problems



A satellite image of a hurricane over the Atlantic Ocean. The hurricane features a prominent, bright white eye and dense, swirling white cloud bands. The surrounding ocean is a deep blue, and the edges of North and South America are visible in the upper left and lower right corners, respectively. The text "Extreme Weather" is overlaid in the center of the image in a bold, black, sans-serif font.

Extreme Weather

- 
- **Population displacement**
 - **Death from drowning**
 - **Injuries**
 - **Damage to potable water, waste water, and irrigation systems**
 - **Water-and food-borne diseases**



What can I do?

What will happen?

**Are we still in time to
do something?**

Who can rescue us now?

Questions?

Thank you!

Nancy Palate

Email: nancy.palate@cdph.ca.gov

Tel: (510) 620-5845