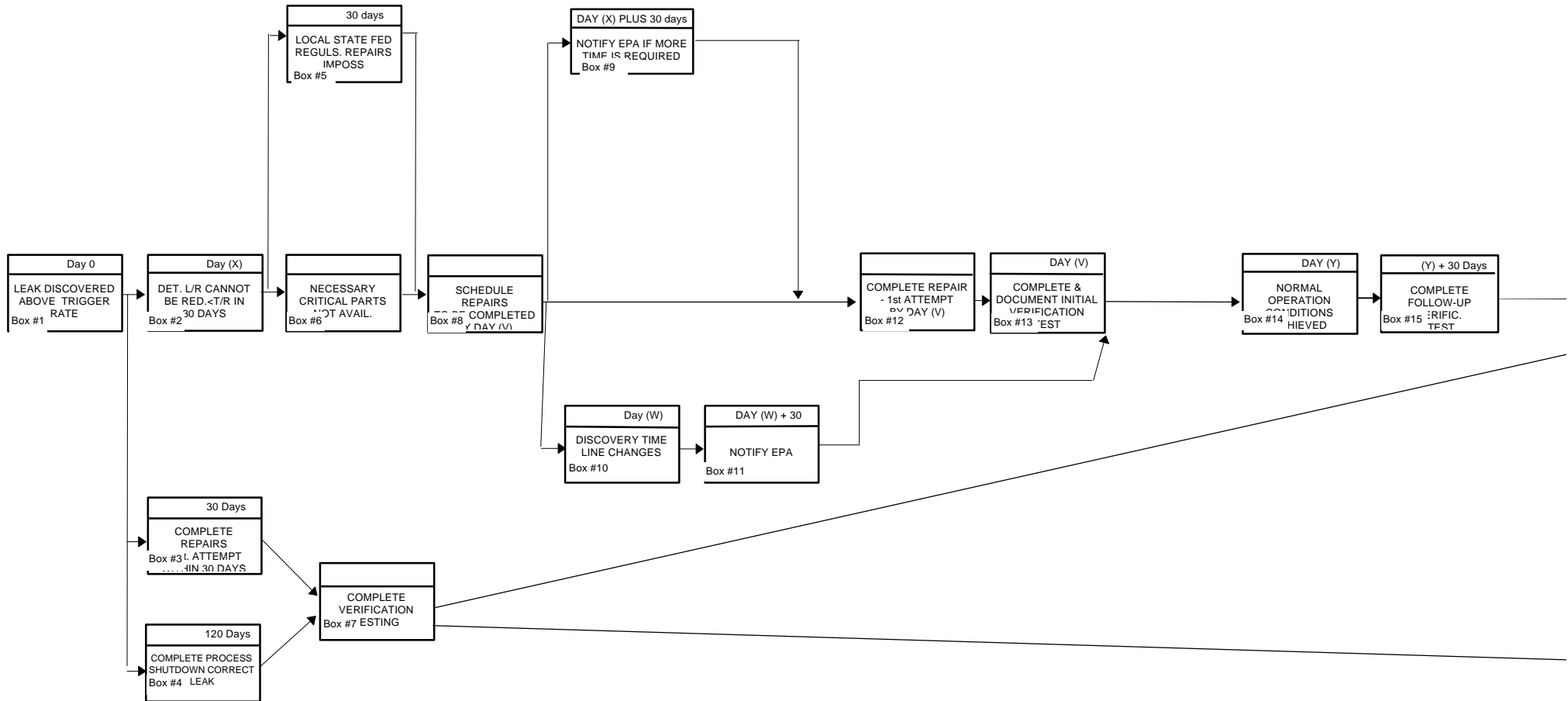
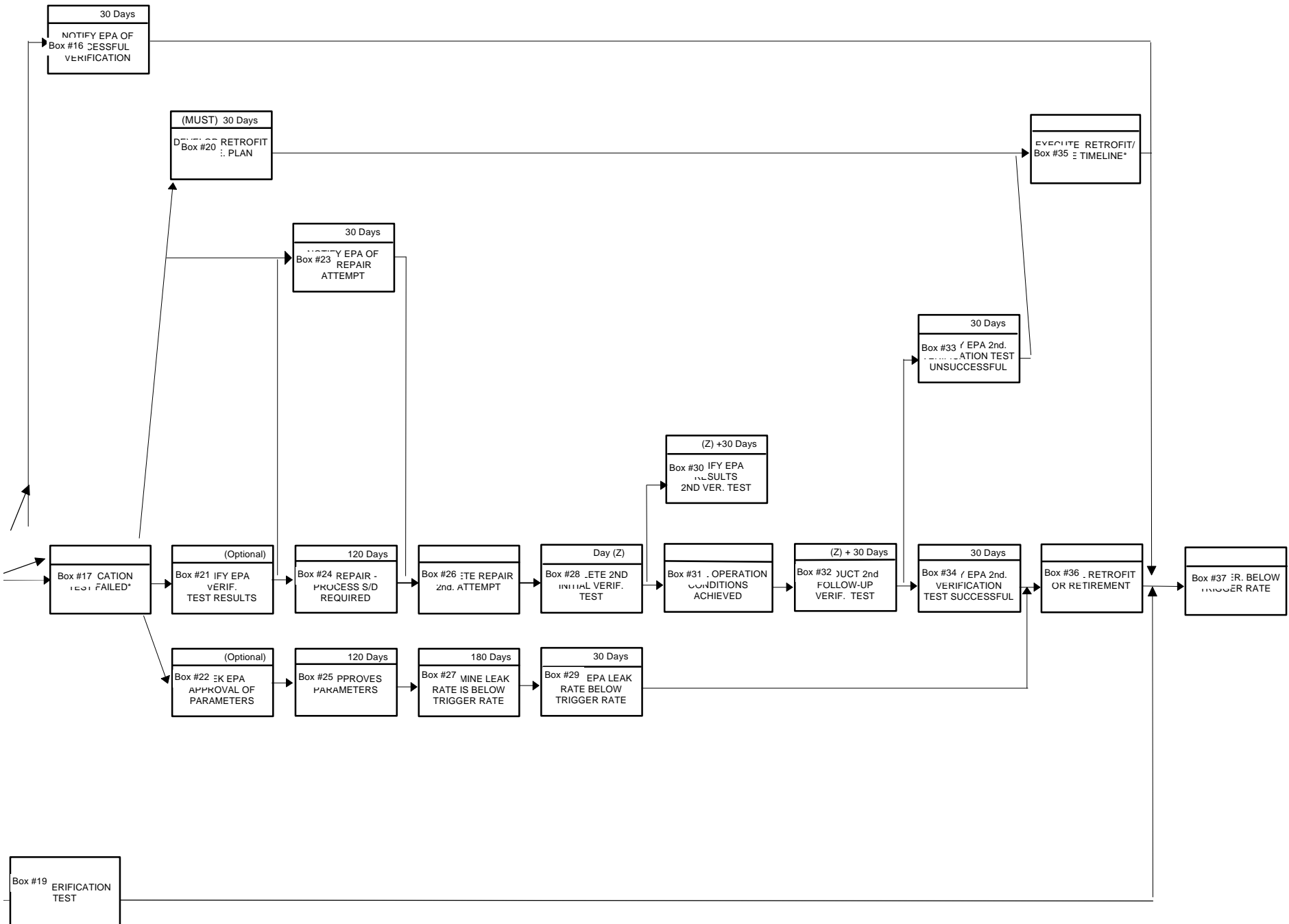


LEGEND

- DAY (X) = DAY YOU DETERMINE THAT LEAK RATE CANNOT BE BROUGHT BELOW TRIGGER RATE WITHIN 30 DAYS
- DAY (Y) = DAY NORMAL OPERATING CHARACTERISTICS OR CONDITIONS ACHIEVED AFTER 2nd REPAIR ATTEMPT
- DAY (Z) = DAY 2nd REPAIR ATTEMPT COMPLETED
- DAY (W) = DAY YOU DISCOVER THE NEED TO CHANGE THE TIME LINE
- DAY (V) = DAY 1ST REPAIR COMPLETED
- L/R = LEAK REPAIR
- T/R = TRIGGER RATE
- S/D = SHUTDOWN





* Box #17 has three options (see Module F)

* Box #17 and Box #35 reference the retrofit/retirement section and timeline (see Module F)

Regulatory Timeline For Leak Repair

* Box #17 has three options (see Module F)

* Box #17 and Box #35 reference the retrofit/retirement section and timeline (see Module F)