

## Portland, OR and surrounding area

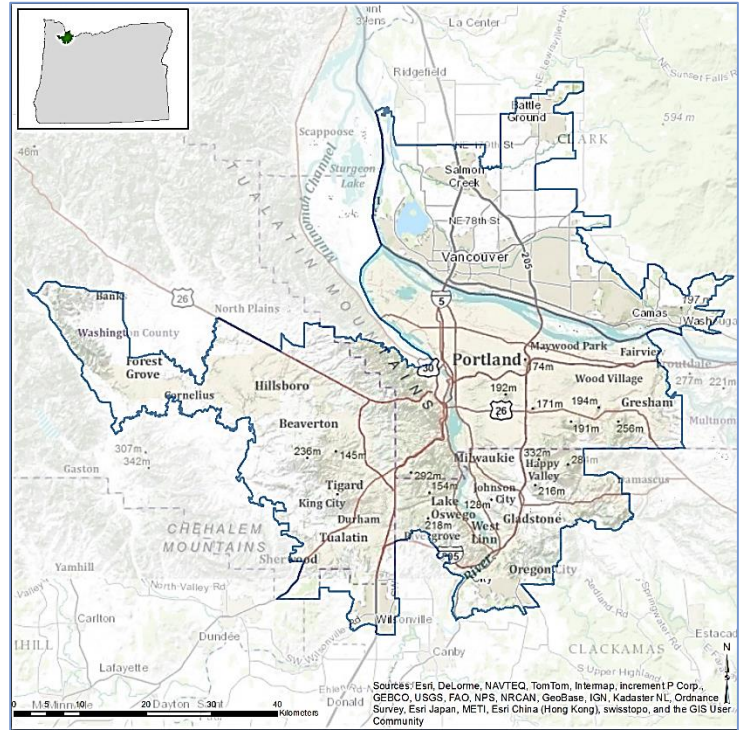
EnviroAtlas combines maps, graphs, and other analysis tools, fact sheets, and downloadable data into an easy-to-use, web-based educational and decision-support tool. EnviroAtlas helps users understand the connections between the benefits we derive from ecosystem services and the natural resources that provide them. For more information, please visit our [website](#).

For selected U.S. communities, EnviroAtlas includes fine-scale maps and other information about existing and potential benefits from the local natural environment. This fact sheet highlights some of the many community data layers available.

### Background

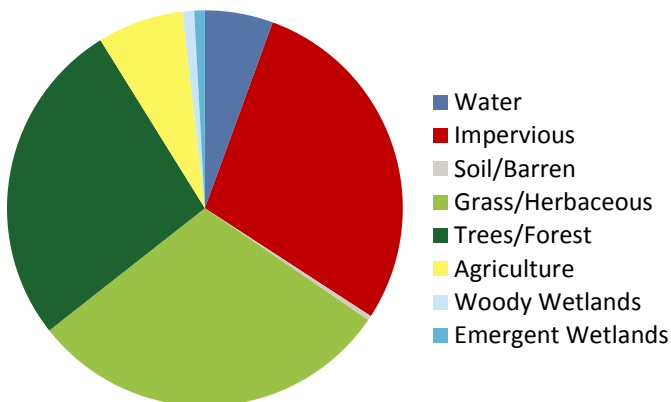
The Portland, OR area was chosen as an EnviroAtlas community because it offers multiple opportunities to leverage existing research and community engagement activities. It has also received high physical fitness and sustainability ratings that can be evaluated from a green infrastructure perspective. The EnviroAtlas boundary for the Portland area was determined using the 2010 Census definition of an Urban Area. In addition to Portland, it includes Vancouver, WA, as well as additional towns within Clackamas, Washington and Multnomah Counties (OR), and Clark County, WA. The area measures 1,762 square kilometers, and encompasses 1,176 census block groups.

The Portland, OR area is in the Willamette Valley



ecoregion. It has a warm, Mediterranean-type climate. The region was vegetated extensively with forests and prairies; however, the prairies have mostly been converted to agriculture. Portland hosts a wide variety of industries and company headquarters. Ics Blount Inc, Intel Corp, and Nike are among the largest employers. The demographics of the Portland community area indicate that the potential exists for income and other disparities in the distribution of environmental assets. EnviroAtlas includes demographic maps that can help screen for potential health and well-being disparities resulting from disproportionate distribution of “green infrastructure.”

Percent Land Cover in Community Area



Portland Area Demographics

Total population	1,853,233
Under 13 years old	17.12%
Over 70 years of age	7.40%
Other than white/non-Hispanic	25.77%
Below twice the U.S. poverty level	28.19%

## Ecosystem Services Overview

In EnviroAtlas, ecosystem services are organized into seven benefit categories:

- Clean air
- Clean and plentiful water
- Natural hazard mitigation
- Climate stabilization
- Recreation, culture, and aesthetics
- Biodiversity conservation
- Food, fuel, and materials (data available only in select communities)

EnviroAtlas helps users understand the connections between the benefits we receive from ecosystem services and the natural resources that provide them. Examples of some of the environmental data included in EnviroAtlas are detailed below:

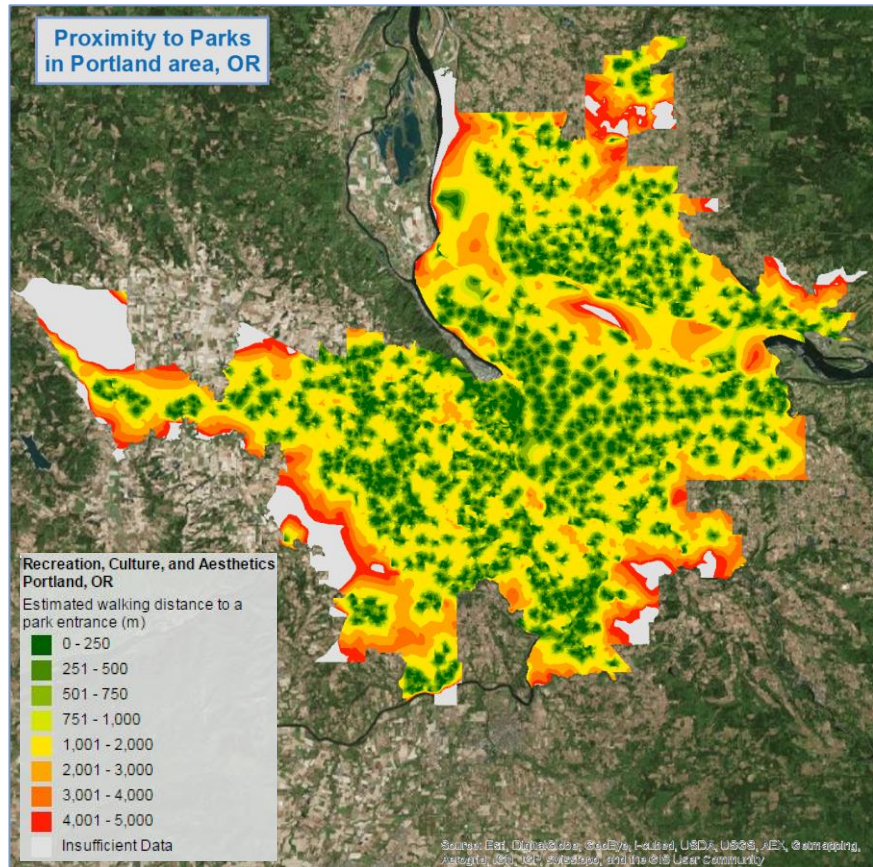
### Access to Parks

Parks provide access to green space, encourage physical activity, and improve the livability and aesthetics of urban areas. Those who live closer to parks may be more likely to receive multiple benefits associated with this proximity. In the interactive map's table of contents, park access layers can be found in the Recreation, Culture, and Aesthetics benefit category.

- An estimated 47 percent of the Portland area population lives within easy walking distance (500 meters) of a park entrance (two darkest green regions in figure to the right).
- An estimated 7 percent of the Portland area does not have a park entrance within 5 kilometers (grey region in figure to the right).

### Near-Road Environments

Studies indicate that the capacity of trees to filter air may reduce the health impacts of vehicular pollution. In



Estimated walking distance to a park entrance.

EnviroAtlas, you can find analyses of tree coverage near busy roads.

- An estimated 63 percent of the Portland area population lives within 300 meters of a busy roadway.
- 49 percent of the estimated population lives within 300 meters of a roadway that has less than 25% tree buffer.

In addition to the Clean Air benefit category, near-road vegetation data layers can also be found under Biodiversity Conservation, and Recreation, Culture and Aesthetics in the interactive map's table of contents.

## EnviroAtlas Tools and Features

- [EnviroAtlas Community Component](#): data layers based on 1-meter land cover summarized to the block group scale.
- [EnviroAtlas National Component](#): data layers based on 30-meter land cover summarized to the watershed scale.
- [EnviroAtlas Interactive Map](#): go directly to the interactive map.
- [EnviroAtlas Fact Sheets](#): Describe the project, each community, and each data layer in detail.
- [Eco-Health Relationship Browser](#): An interactive relational tool that explores ecosystems, the services they provide, and benefits to human health and well-being.
- [Contact the EnviroAtlas Team](#): Please contact us if you have any questions about EnviroAtlas

EnviroAtlas combines maps, graphs, and other analysis tools, fact sheets, and downloadable data into an easy-to-use, web-based educational and decision-support tool. EnviroAtlas helps users understand the connections between the benefits we derive from ecosystem services and the natural resources that provide them. For more information, please visit our [website](#).