

## Pittsburgh, PA and surrounding area

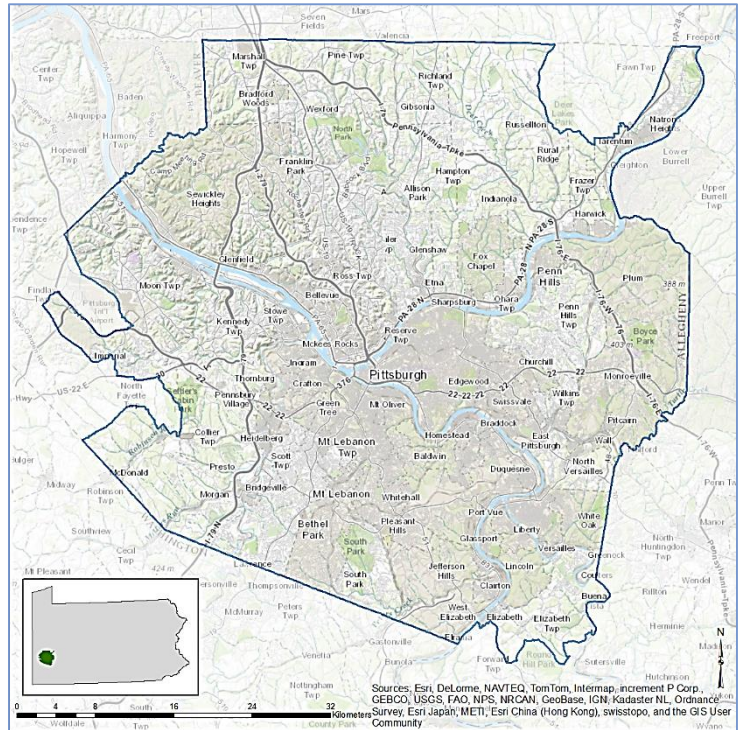
EnviroAtlas combines maps, graphs, and other analysis tools, fact sheets, and downloadable data into an easy-to-use, web-based educational and decision-support tool. EnviroAtlas helps users understand the connections between the benefits we derive from ecosystem services and the natural resources that provide them. For more information, please visit our [website](#).

For selected U.S. communities, EnviroAtlas includes fine-scale maps and other information about existing and potential benefits from the local natural environment. This fact sheet highlights some of the many community data layers available.

### Background

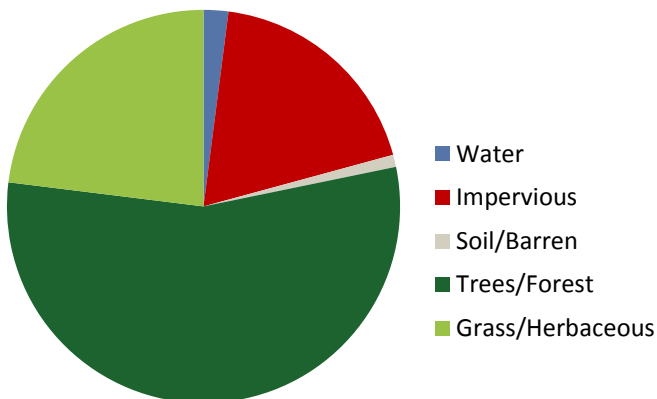
The Pittsburgh, PA area was chosen as an EnviroAtlas community based on a request from EPA Region 3. It also offers multiple opportunities to leverage existing research and community engagement activities, and had received poor air quality ratings that can be evaluated from a green infrastructure perspective. The EnviroAtlas boundary for the Pittsburgh area was determined using the 2010 Census definition of an Urban Area. It includes the city and suburbs of Pittsburgh--most of Allegheny County. The area measures 1,696 square kilometers, and encompasses 1,089 census block groups.

The Pittsburgh, PA area is in the Western Allegheny Plateau ecoregion. It has a severe, humid climate with hot summers



and cold winters. This area is vegetated with mixed-oak forests, although much of the area has been extensively mined. The community's economy was based in steel for decades before shifting towards technology industries in recent years. The largest employers include UPM Shadyside Hospital, the University of Pittsburgh, and Giant Eagle supermarkets. The demographics of the Pittsburgh community area indicate that the potential exists for income and other disparities in the distribution of environmental assets. EnviroAtlas includes demographic maps that can help screen for potential health and well-being disparities resulting from disproportionate distribution of "green infrastructure."

Percent Land Cover in Community Area



Pittsburgh Area Demographics

Total population	1,209,128
Under 13 years old	13.78%
Over 70 years of age	12.44%
Other than white/non-Hispanic	19.57%
Below twice the poverty level	27.65%

## Ecosystem Services Overview

In EnviroAtlas, ecosystem services are organized into seven benefit categories:

- Clean air
- Clean and plentiful water
- Natural hazard mitigation
- Climate stabilization
- Recreation, culture, and aesthetics
- Biodiversity conservation
- Food, fuel, and materials (data available only in select communities)

Examples of some of the data included in EnviroAtlas are detailed below:

### Green Space and Trees

Research indicates that physical and visual access to trees and other green space has positive physiological, cognitive, and emotional benefits. In the interactive map's table of contents, green space data layers can be found under all of the benefit categories.

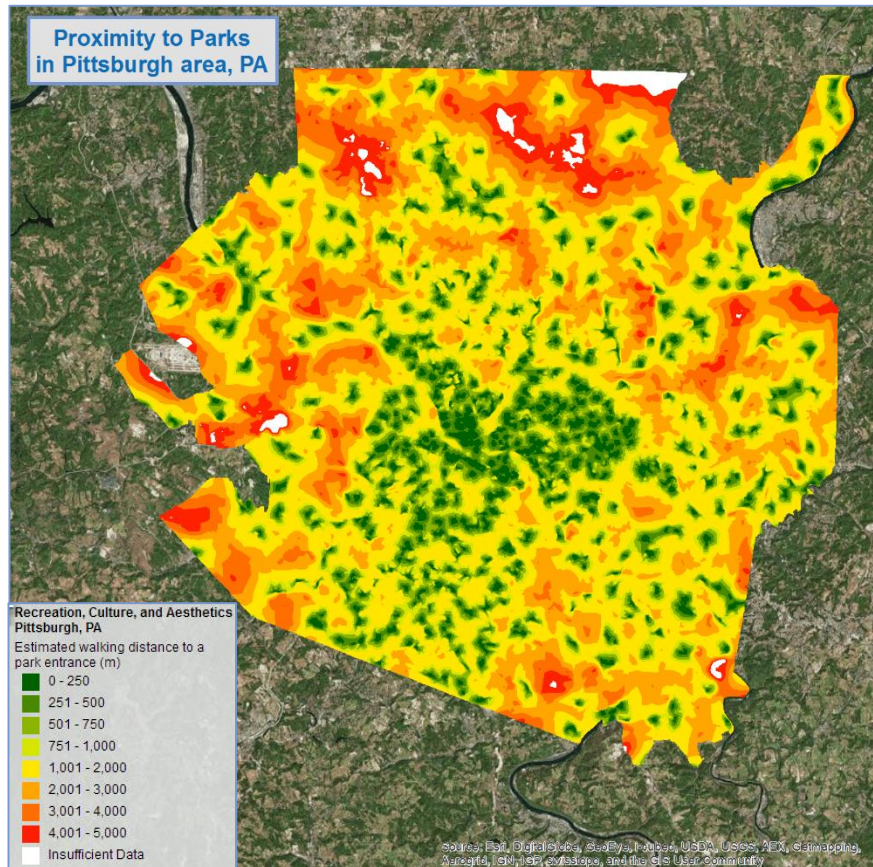
- There are 1,097 square meters of green space per person.
- 74 out of 508 K-12 Schools have less than 25 percent green space within 100 meters.
- There are 7,196,995 tons of carbon stored in the local tree biomass, with an additional 228,357 tons sequestered annually.
- 3,760,099 kilograms of ozone are removed from the air by local tree biomass every year.

### Access to Parks

Parks provide access to green space, encourage physical activity, and improve the livability and aesthetics of urban areas. Those who live closer to parks may be more likely to receive the multiple benefits associated with this proximity.

## EnviroAtlas Tools and Features

- [EnviroAtlas Community Component](#): data layers based on 1-meter land cover summarized to the block group scale.
- [EnviroAtlas National Component](#): data layers based on 30-meter land cover summarized to the watershed scale.
- [EnviroAtlas Interactive Map](#): go directly to the interactive map.
- [EnviroAtlas Fact Sheets](#): Describe the project, each community, and each data layer in detail.
- [Eco-Health Relationship Browser](#): An interactive relational tool that explores ecosystems, the services they provide, and benefits to human health and well-being.
- [Contact the EnviroAtlas Team](#): Please contact us if you have any questions about EnviroAtlas.



- An estimated 14 percent of the Pittsburgh area is located within easy walking distance (500 meters) of a park entrance (dark and medium green areas in figure above).
- An estimated 1.3 percent of the Pittsburgh area does not have a park entrance within 5 kilometers (white areas in figure above).

In the interactive map's table of contents, park access layers can be found in the Recreation, Culture, and Aesthetics benefit category.

EnviroAtlas combines maps, graphs, and other analysis tools, fact sheets, and downloadable data into an easy-to-use, web-based educational and decision-support tool. EnviroAtlas helps users understand the connections between the benefits we derive from ecosystem services and the natural resources that provide them. For more information, please visit our [website](#).