

## Paterson, NJ and surrounding area

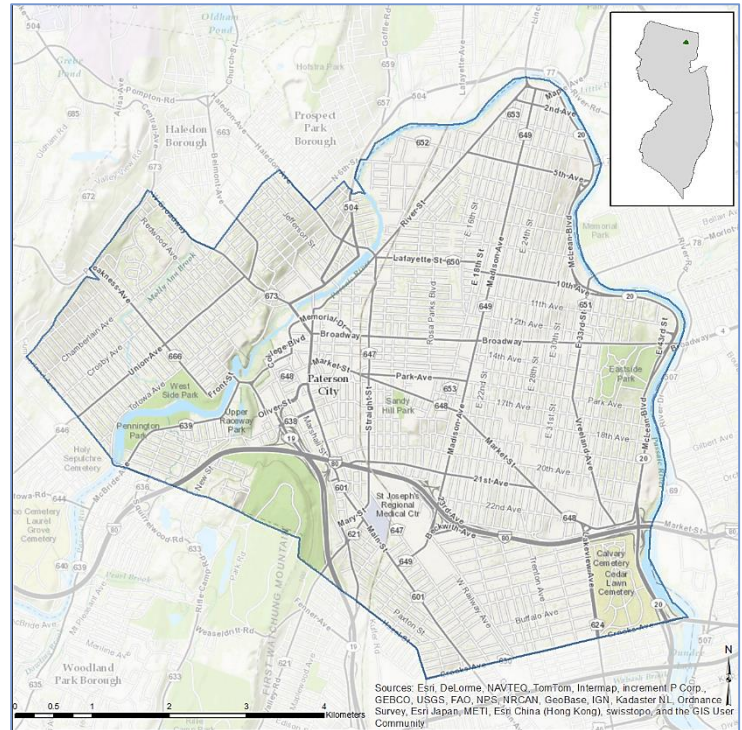
EnviroAtlas combines maps, graphs, and other analysis tools, fact sheets, and downloadable data into an easy-to-use, web-based educational and decision-support tool. EnviroAtlas helps users understand the connections between the benefits we derive from ecosystem services and the natural resources that provide them. For more information, please visit our [website](http://enviroatlas.epa.gov).

For selected U.S. communities, EnviroAtlas includes fine-scale maps and other information about existing and potential benefits from the local natural environment. This fact sheet highlights some of the many community data layers available.

### Background

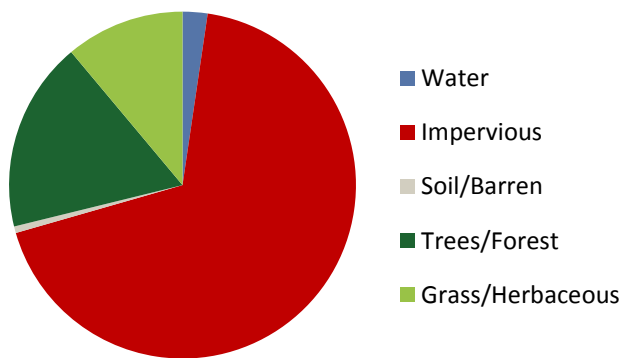
The Paterson, NJ area was chosen as an EnviroAtlas community because it is a priority area for EPA Region 2. The EnviroAtlas boundary for the Paterson area was determined using the 2011 municipal area from NAVTEQ. The area measures 23 square kilometers, and encompasses 107 census block groups.

The Paterson, NJ area is in the Northern Piedmont ecoregion. It has a transitional climate with hot summers and mild to cold winters. Historically, the area was vegetated with Appalachian oak forests; however, much of the natural vegetation has been removed for farming and urbanization. There is significant urban and suburban development, surrounded primarily by agriculture. Paterson



was once a major silk production area and the current industries are primarily related to fabric production such as dyeing and polymers. The largest employers in the area are St. Joseph’s Regional Medical Center, the City of Paterson, and William Paterson University. The demographics of the Paterson community area indicate that the potential exists for income and other disparities in the distribution of environmental assets. EnviroAtlas includes demographic maps that can help screen for potential health and well-being disparities resulting from disproportionate distribution of “green infrastructure.”

Percent Land Cover in Community Area



Paterson Area Demographics

Total population	146,199
Under 13 years old	20.01%
Over 70 years of age	5.82%
Other than white/non-Hispanic	90.82%
Below twice the U.S. poverty level	51.52%

