

Green Bay, WI and surrounding area

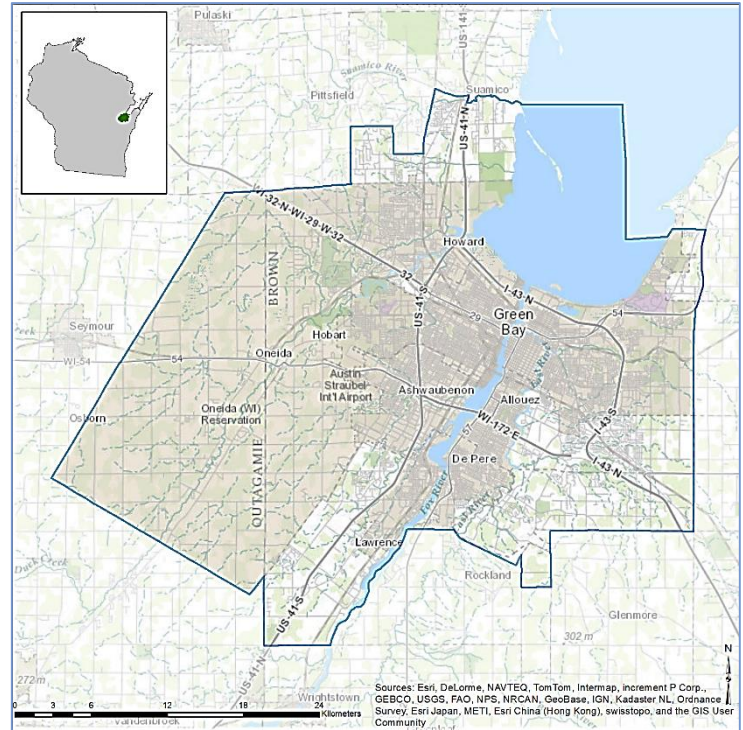
EnviroAtlas combines maps, graphs, and other analysis tools, fact sheets, and downloadable data into an easy-to-use, web-based educational and decision-support tool. EnviroAtlas helps users understand the connections between the benefits we derive from ecosystem services and the natural resources that provide them. For more information, please visit our [website](http://enviroatlas.epa.gov).

For selected U.S. communities, EnviroAtlas includes fine-scale maps and other information about existing and potential benefits from the local natural environment. This fact sheet highlights some of the many community data layers available.

Background

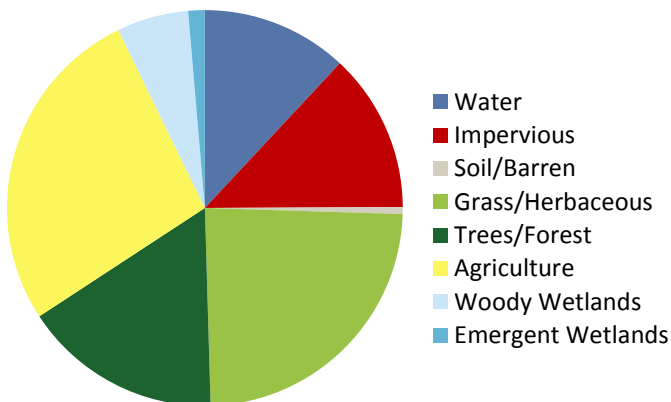
The Green Bay, WI area was chosen as an EnviroAtlas community based on a request from EPA Region 5. In addition, it affords the opportunity to include Tribal territory—the Oneida Tribal lands. The EnviroAtlas boundary for the Green Bay area was determined using the 2010 Census definition of an Urban Area with the addition of the Oneida Tribal Lands. In addition to Green Bay and Oneida, it includes portions of DePere and Ashwaubenton, as well as towns within Outagamie and Brown Counties. The area measures 727 square kilometers, and encompasses 155 census block groups.

The Green Bay area is in the Southeastern Wisconsin Till Plains ecoregion. It has severe, humid climate with warm summers and harsh winters. The region is vegetated with



transitional hardwood forests, oak savannahs, and tall grass prairies; there is also significant agriculture. The leading industries are manufacturing, financing, medical, and insurance. Humana, Schneider National, and the Oneida Nation of Wisconsin are among largest employers in the area. The demographics of the Green Bay community area indicate that the potential exists for income and other disparities in the distribution of environmental assets. EnviroAtlas includes demographic maps that can help screen for potential health and well-being disparities resulting from disproportionate distribution of “green infrastructure.”

Percent Land Cover in Community Area



Green Bay Area Demographics

Total population	219,947
Under 13 years old	18.08%
Over 70 years of age	8.30%
Other than white/non-Hispanic	18.75%
Below twice the poverty level	26.86%

Ecosystem Services Overview

In EnviroAtlas, ecosystem services are organized into seven benefit categories:

- Clean air
- Clean and plentiful water
- Natural hazard mitigation
- Climate stabilization
- Recreation, culture, and aesthetics
- Biodiversity conservation
- Food, fuel, and materials (data available only in select communities)

EnviroAtlas helps users understand the connections between the benefits we receive from ecosystem services and the natural resources that provide them. Examples of some of the environmental data included in EnviroAtlas are detailed below:

Stream and Lake Buffers

Natural land cover adjacent to streams and rivers, sometimes called the riparian area or zone, helps protect water quality and supply for drinking, recreation, and aquatic habitat. The EnviroAtlas community component analyzes stream and lake buffers with widths of 15 and 50 meters.

- An estimated 3.1% of Green Bay's land area is within 15 meters of a stream or lake.
- 54% of Green Bay's 15 meter stream and lake buffers are forested.

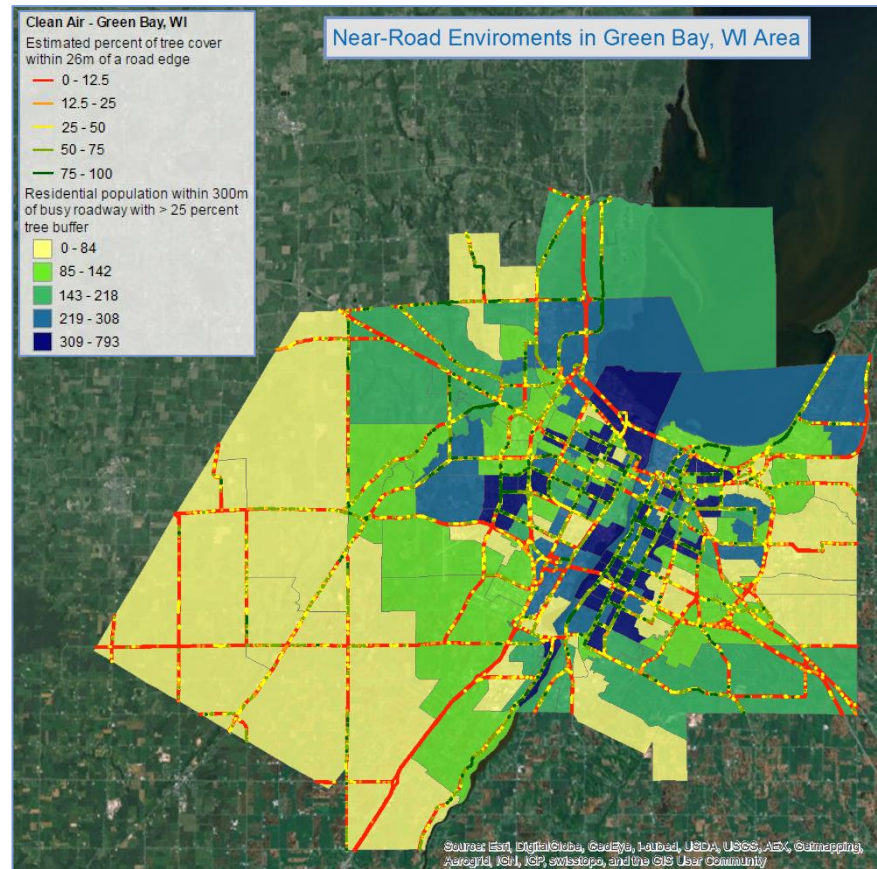
In the interactive map's table of contents, stream and lake buffer layers can be found in the Clean and Plentiful Water, Natural Hazard Mitigation, Recreation, Culture, and Aesthetics, and Biodiversity Conservation benefit categories.

Near-Road Environments

Studies indicate that the capacity of trees to filter air may reduce the health impacts of vehicular pollution. In

EnviroAtlas Tools and Features

- [EnviroAtlas Community Component](#): data layers based on 1-meter land cover summarized to the block group scale.
- [EnviroAtlas National Component](#): data layers based on 30-meter land cover summarized to the watershed scale.
- [EnviroAtlas Interactive Map](#): go directly to the interactive map.
- [EnviroAtlas Fact Sheets](#): Describe the project, each community, and each data layer in detail.
- [Eco-Health Relationship Browser](#): An interactive relational tool that explores ecosystems, the services they provide, and benefits to human health and well-being.
- [Contact the EnviroAtlas Team](#): Please contact us if you have any questions about EnviroAtlas.



The distribution of tree cover near busy roadways

EnviroAtlas, you can find analyses of tree coverage near busy roads.

- 15 percent of the estimated Green Bay population lives within 300 meters of a busy road with >25 percent tree buffer (yellow to blue block groups in the figure above).
- 75 percent of the busy roadways in Green Bay have >25 percent tree buffer (roadways indicated by red and orange lines in the figure above).

In addition to the Clean Air benefit category, near-road vegetation data layers can also be found under Biodiversity Conservation, and Recreation, Culture and Aesthetics in the interactive map's table of content

EnviroAtlas combines maps, graphs, and other analysis tools, fact sheets, and downloadable data into an easy-to-use, web-based educational and decision-support tool. EnviroAtlas helps users understand the connections between the benefits we derive from ecosystem services and the natural resources that provide them. For more information, please visit our [website](#).