

SYMBOLS

DESCRIPTION	EXISTING	PROPOSED
UTILITY POLE	○	
SPOT ELEVATION	+	xxx
APPROX. INFILTRATION TP LOCATION	TP-X	
CONVENTIONAL BITUMINOUS PAVEMENT	▒	
POROUS PAVEMENT		▒

LINE TYPES

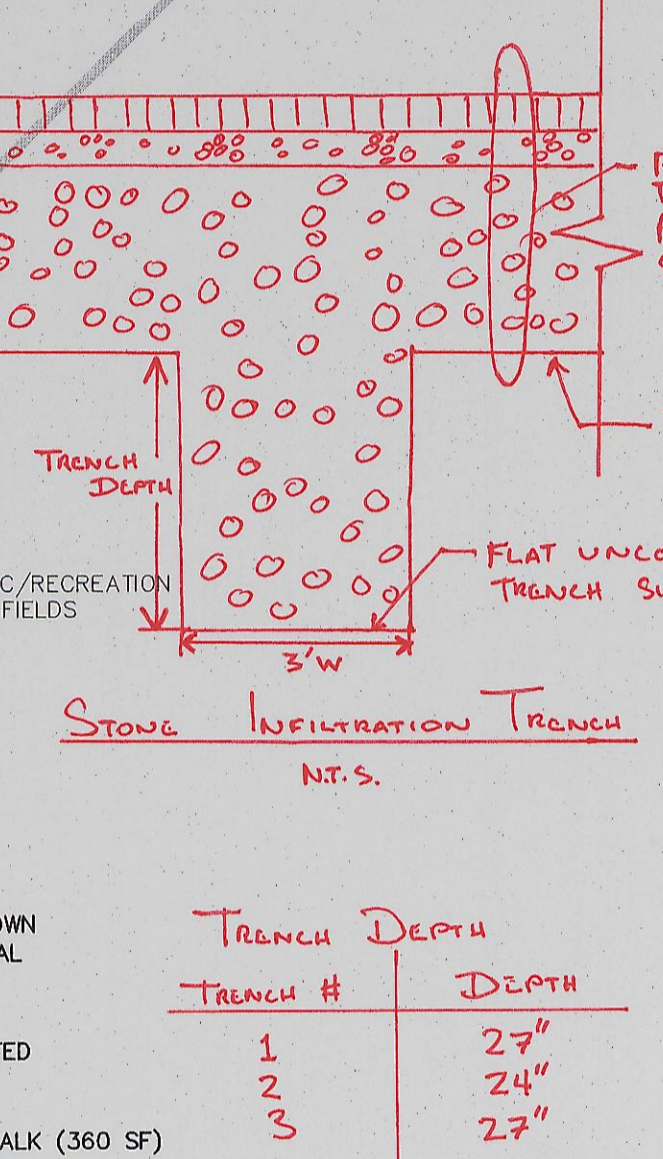
DESCRIPTION	EXISTING	PROPOSED
CONTOUR (1' INTERVAL)	- - - - -	- - - - -
CONTOUR (INDEX)	- - - - -	- - - - -
FENCE	x x x x	x x x x
CURB	—	—
EDGE OF PAVEMENT	—	—
EDGE OF PAVEMENT	—	—
EROSION CONTROL BARRIER	•••••	•••••
LIMIT OF WORK	LW	LW

- ### GENERAL NOTES:
- EXISTING CONDITIONS BASE PLAN DATA PROVIDED BY THE TOWN OF ARLINGTON, MA ENGINEERING OFFICE.
 - NUMEROUS CONCRETE BARRIERS EXIST ALONG THE EDGES OF THE PARKING LOT. THE TOWN SHALL BE RESPONSIBLE FOR RELOCATING CONCRETE BARRIERS FROM ALL LOCATIONS WITHIN THE LIMITS OF WORK IN ADVANCE OF CONTRACTOR MOBILIZATION TO THE SITE.
 - THE CONTRACTOR SHALL HAVE FULL ACCESS TO/ AND CONTROL OF THE SITE THROUGHOUT CONSTRUCTION.
 - CONTRACTOR TO MAINTAIN ACCESS TO BALL FIELDS DURING CONSTRUCTION. SAFETY FENCE MAY BE REQUIRED.
 - CONTRACTOR SHALL REMOVE AND RECYCLE ALL EXISTING BIT. PAVEMENT ASSOCIATED WITH PARKING LOT EAST AND SOUTH OF SAWCUT LINE.

APPROXIMATE THICKNESS OF EXISTING PAVEMENT

TP	THICKNESS
TP-1	NOT MEASURED
TP-2	8"
TP-3	4"-6"
TP-4	NOT MEASURED
TP-5	6"-7"
TP-6	8"
TP-7	7"
TP-8	6"-8"
TP-9	14"

NOTE: PAVEMENT THICKNESS RECORDED AS APPROXIMATE DURING INFILTRATION TESTING ON APRIL 3, 2012. PAVEMENT THICKNESS MAY VARY FROM LOCATION TO LOCATION.



41 Hutchins Drive
Portland, Maine 04102
800.226.4262 | www.woodardcurran.com

COMMITMENT & INTEGRITY DRIVE RESULTS

DESIGNED BY: DAS
DRAWN BY: BOM
CHECKED BY: DAS
DATE: 6/17/12
SCALE: AS NOTED
SHEET: 1 OF 2

SITE PLAN - 0.30 AC. LOT

U.S. EPA REGION 1
BOSTON, MA

MYSTIC RIVER WATERSHED
POROUS PAVEMENT EDUCATION &
OUTREACH PROJECT

JOB NO.: 219471.02
DATE: JUNE 11, 2012
SCALE: AS NOTED
SHEET: 1 OF 2

C-100