

What's New in Version 2.1

During the process of updating CAP88 PC-Version 2.0 to make requested changes, we discovered that the Windows version relied on several third party software packages. Unfortunately, the current versions of these software packages are not compatible with the versions used in CAP88-PC Version 2.0. In addition, Version 2.1 is compatible with Windows 95b and higher.

In updating CAP88 PC, we set the following general goals:

- Eliminate third party packages, using only Visual Basic 6.0
- Change code only where necessary
- Keep look and feel as close to the original as reasonable necessary

CAP88 PC-Version 2.1 is flexible and user friendly. You can also view the configuration of Version 2.1.

Version 2.1 includes the following specific changes:

Changes in Installation and Operating Environment

- Automatic Installation to CAP88 File
- User-Selected Directory Locations
- Automatic Selection of Windows Environment
- Windows NT Correction
- Y2K Compliance
- Updated Introductory Contact Information
- Fixed Tool Bar Location

Changes in Flexibility

- Site-Specific Humidity
- Site-Specific Distance and Sector
- Higher Radionuclides Limit
- Integrated Population and Wind Files

Description of Changes

Changes in Installation and Operating Environment

Automatic Installation to CAP88 File

Version 2.0: Current version does not automatically install to CAP88 file.

Version 2.1: Automatically install to the file named "CAP88."

User-Selected Directory Locations

Version 2.0: Directory locations are hard coded.

Version 2.1: Users can install Version 2.1 at any drive and directory.

Automatic Selection of Windows Environment

Version 2.0: A dialog box incorrectly encourages the user to select "MS-DOS mode".

Version 2.1: The updated code automatically selects Windows.

Windows NT Correction

Version 2.0: When running under Windows NT, the incorrect entry of a number causes the program to stop without explanation.

Version 2.1: The updated version contains automatic error detection codes for input files that are compatible with Windows95 and above.

Y2K Compliance

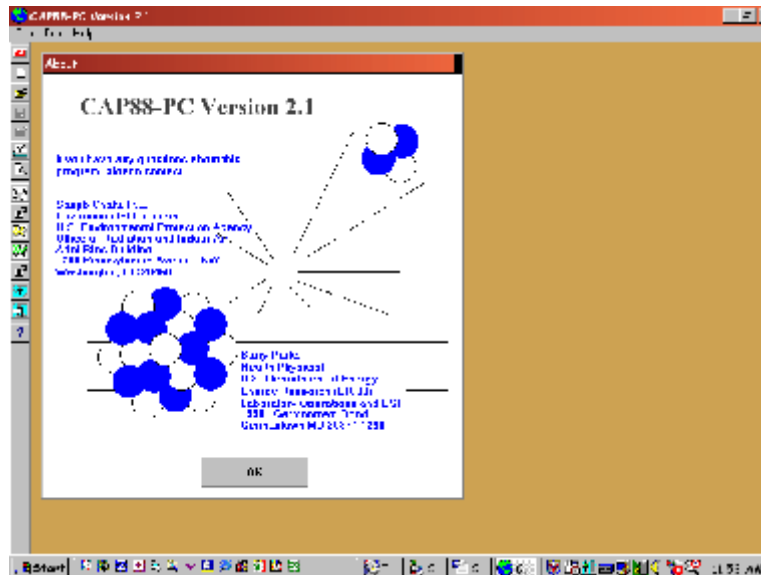
Version 2.0: Users have to download Y2K patch to run the program. Once the patch is installed, the program "auto closes" on exit. In addition, a Windows 95 screen import bug specifies the wrong working directory.

Version 2.1: The updated version is Y2K compliant and the working directory is correct.

Updated Introductory Contact Information

Version 2.0: Introductory contact information is outdated.

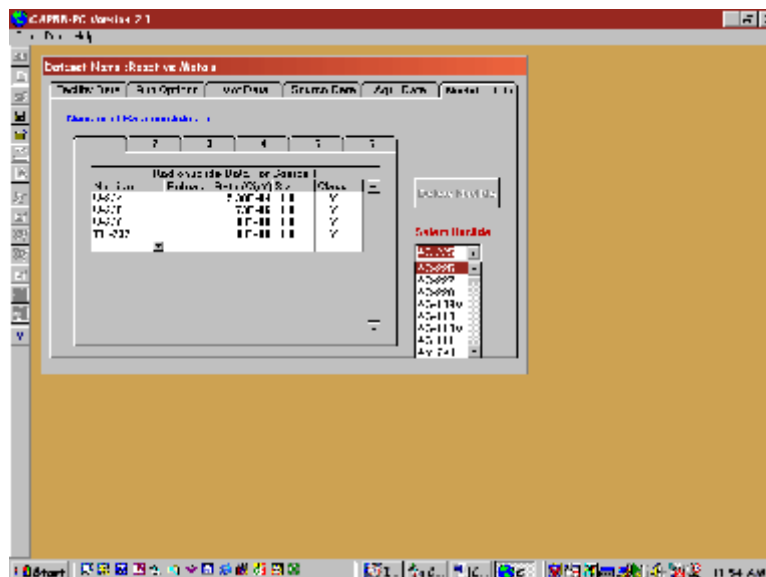
Version 2.1: Introductory contact information is current.



Fixed Toolbar Location

Version 2.0: Users expressed a desire to minimize changes to look and feel.

Version 2.1: Fixing the location of the toolbar is the only change to the look and feel.



Changes in Flexibility

Site-Specific Humidity

Version 2.0: Fixed absolute humidity of 8 g/m³ in determining the tritium concentration in vegetation with a specific activity model.

Version 2.1: User can enter a site-specific humidity.

Site-Specific Distance and Sector

Version 2.0: Users perform “individual” assessments (i.e., no population file provided) by entering a single distance for the dose calculations. The code then determines the worst sector based on meteorological data. For sites where boundaries are irregular and the release is somewhat near the boundary, CAP88 PC may chose a “worst sector” that is not an offsite location.

Version 2.1: Users performing individual assessments for a single location, can specify the direction index and the distance index for a site-specific distance and sector.

Higher Radionuclides Limit

Version 2.0: Limit of 36 radionuclides allowed in a single run

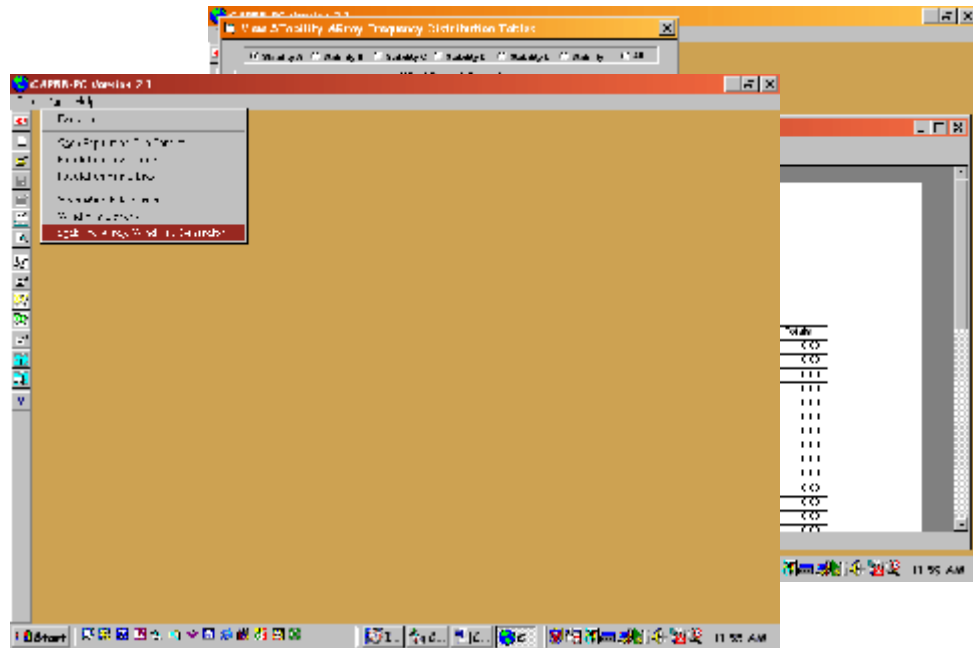
Version 2.1: Limit of 120 radionuclides allowed in a single run.

Integrated Population and Wind Files

Version 2.0: Population and Wind Libraries are separate.

Version 2.1: Population and Wind File Editors and Libraries are integrated into CAP88PC. (See illustration on following page.

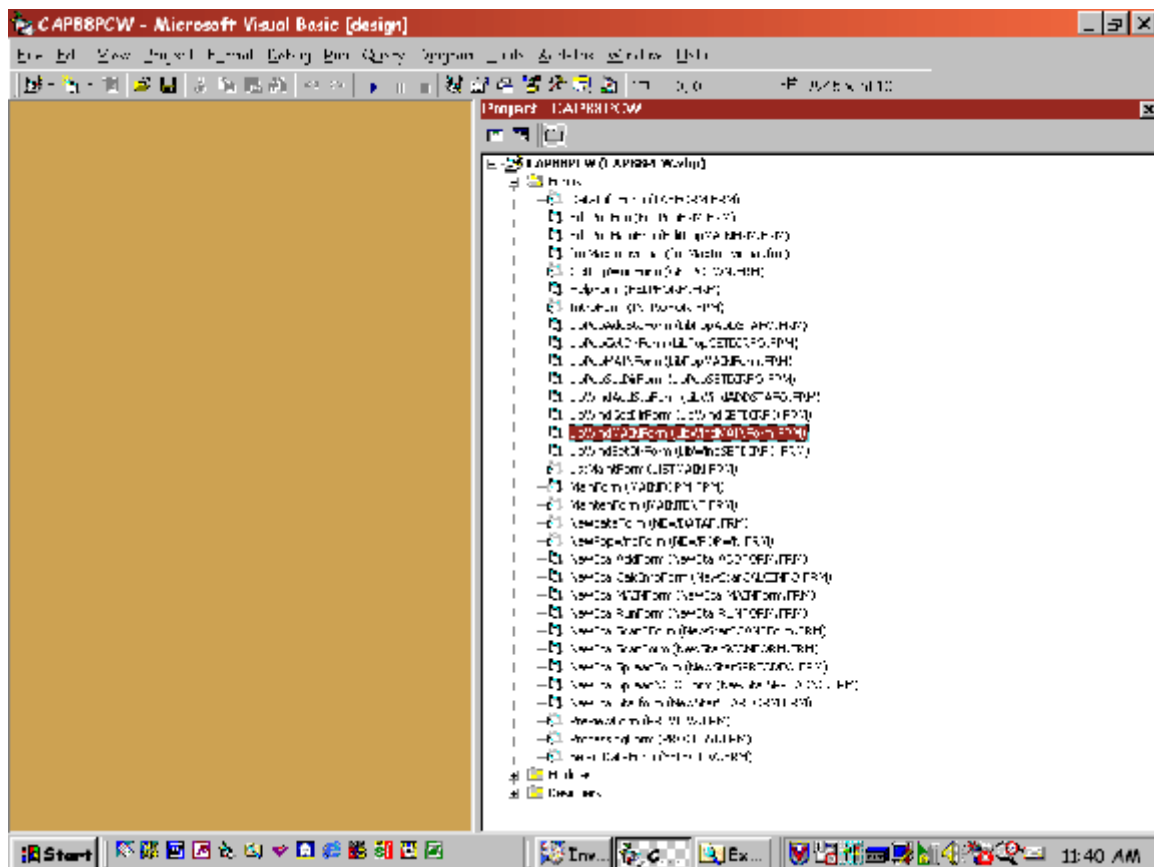
Integrated Population and Wind File Editors and Libraries



CAP88 PC- Version 2.1 Configuration

- CAP88PC V2.1 VB Forms
- VB Modules and Data Interface
- CAP88PC V2.1 Directory Structure

CAP88PC V2.1 VB Forms



CAP88PC V2.1 Directory Structure

