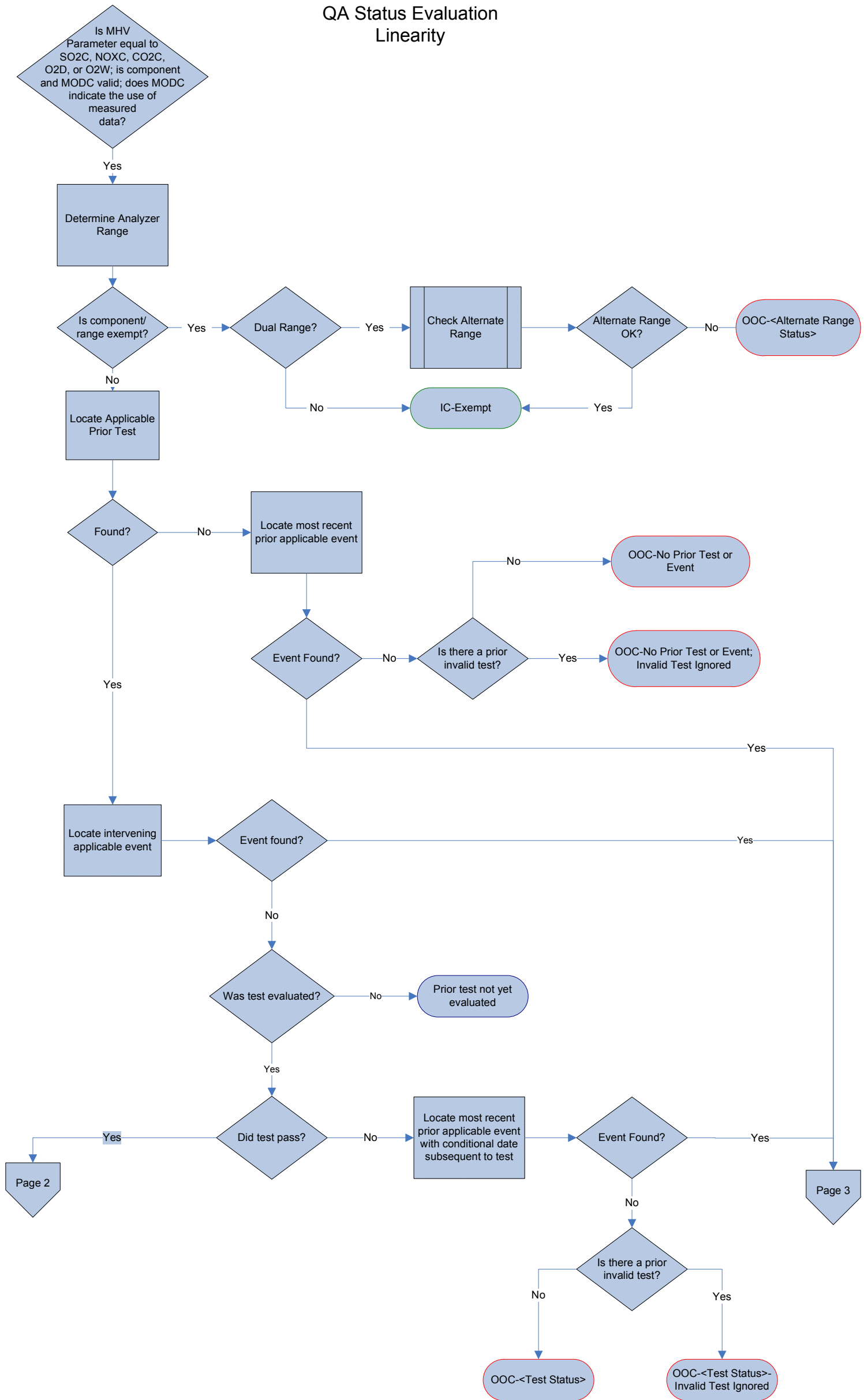
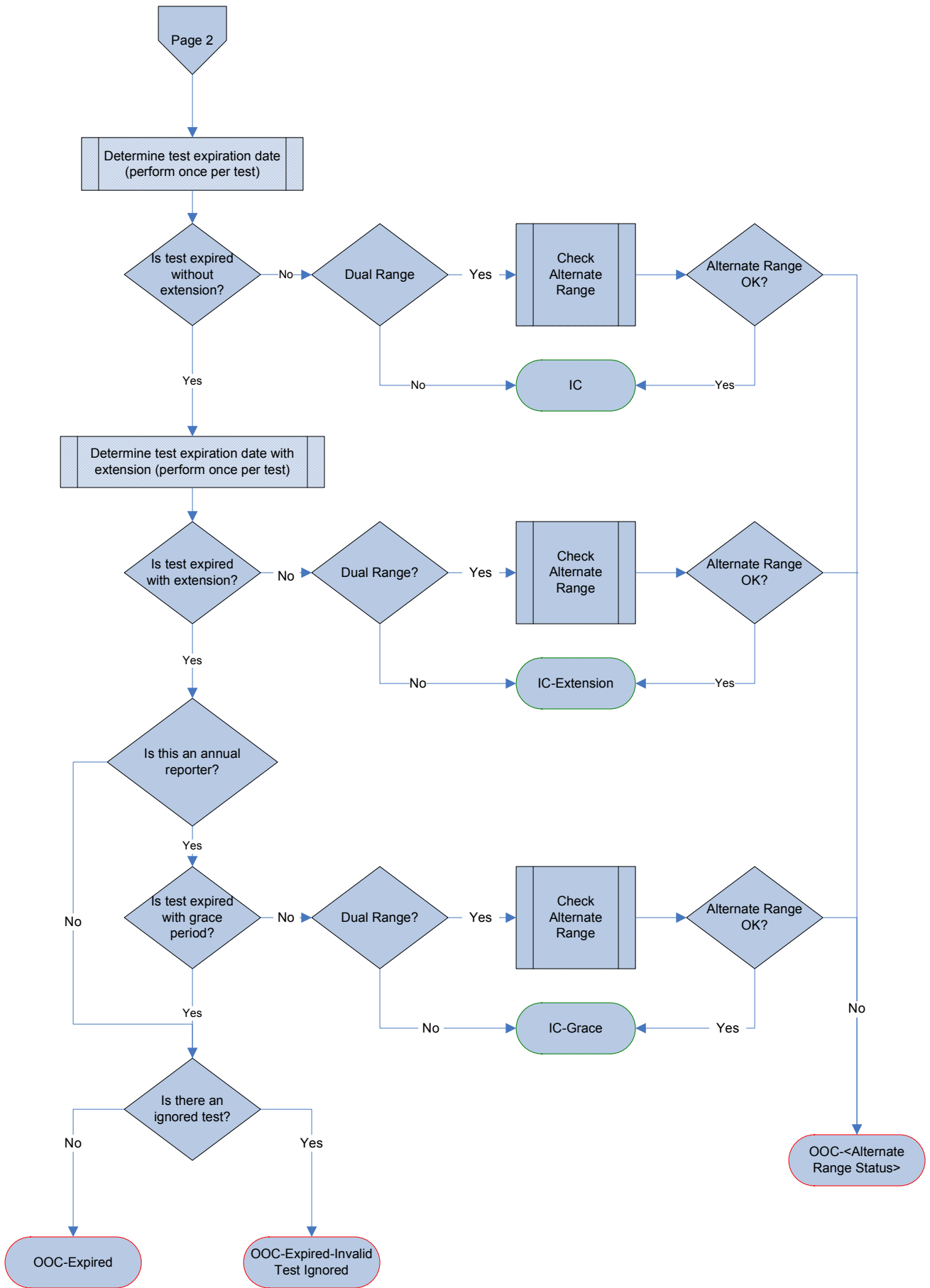


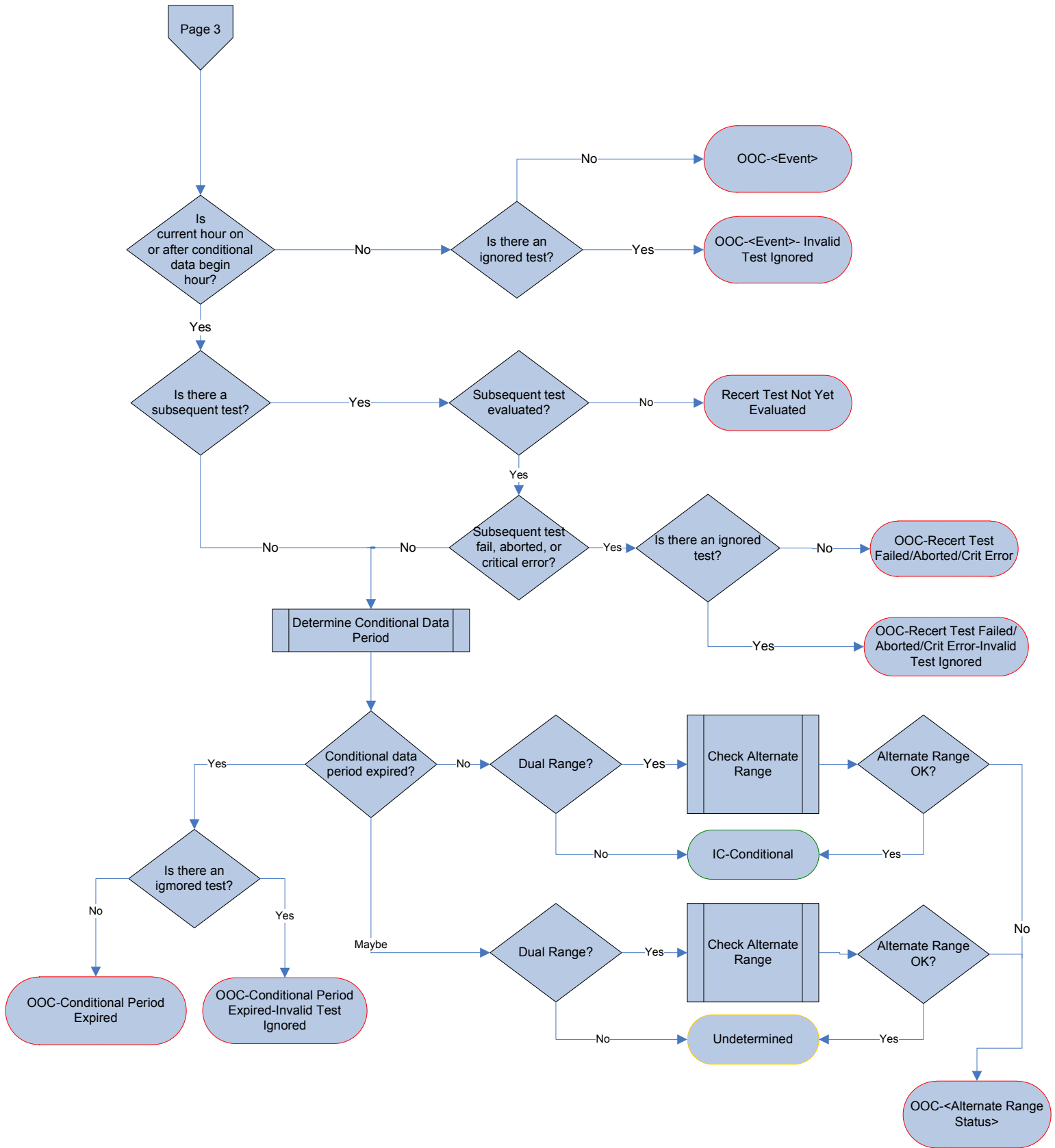
# QA Status Evaluation Linearity



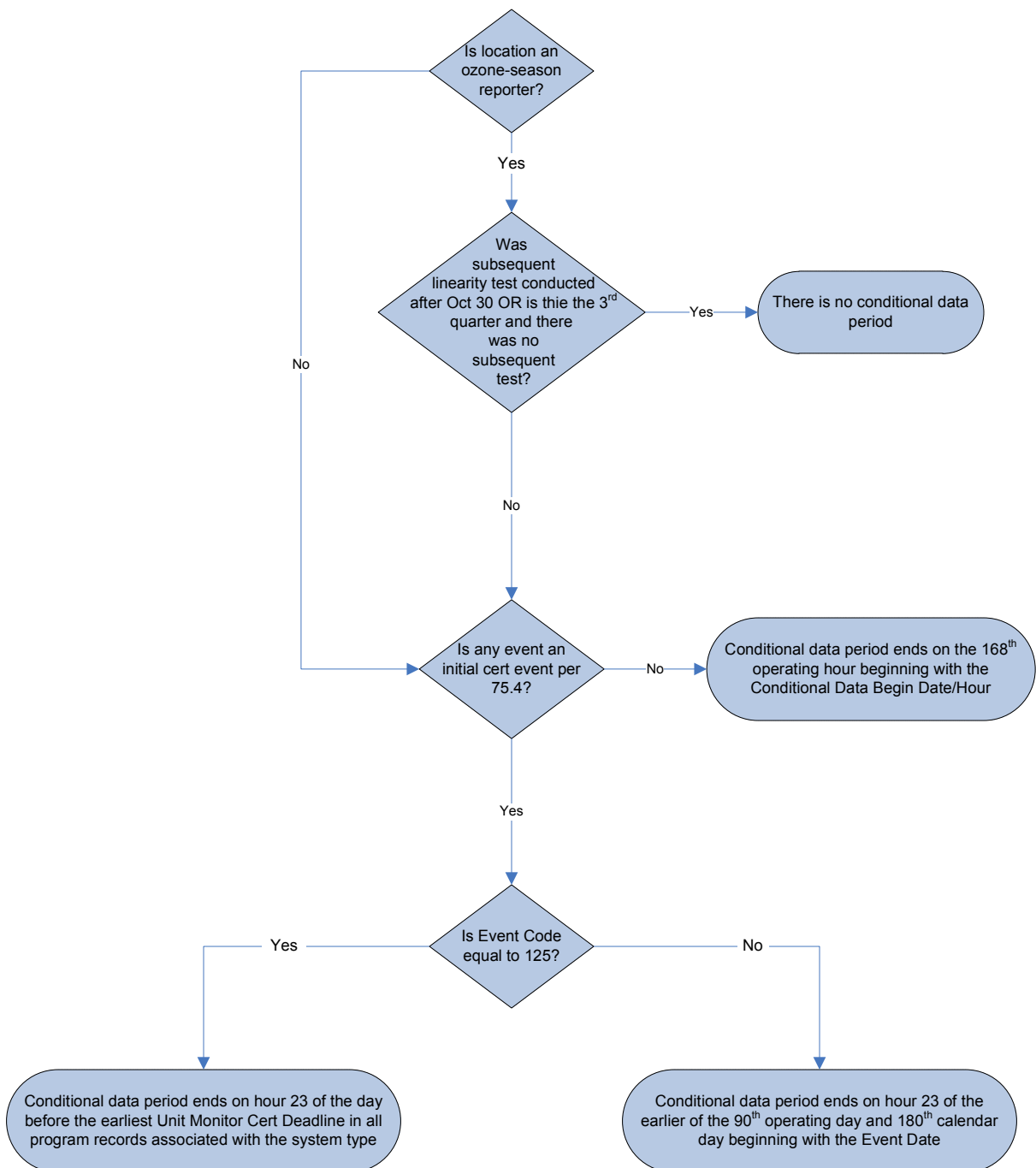
# QA Status Evaluation Linearity



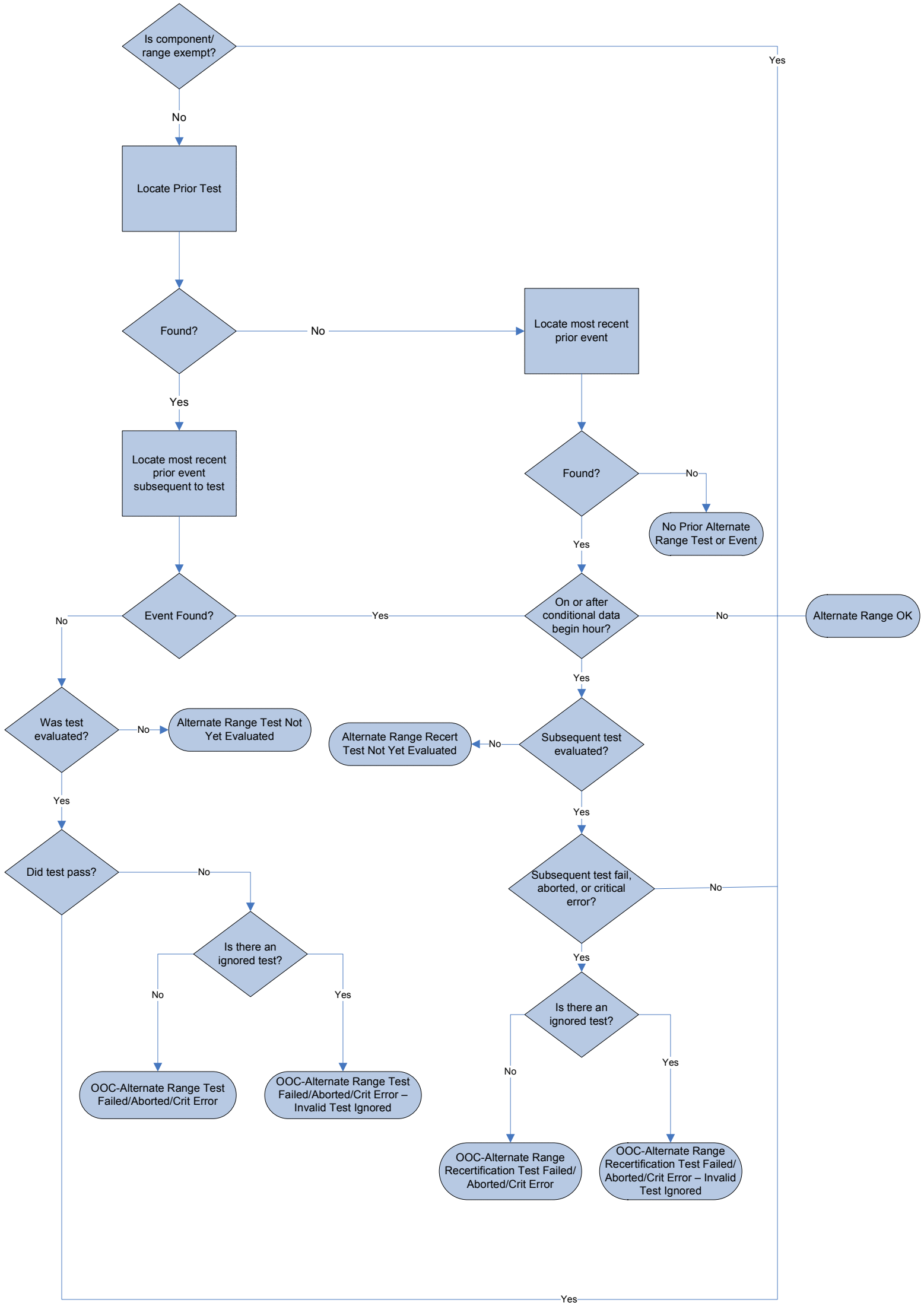
# QA Status Evaluation Linearity



QA Status Evaluation  
Linearity – Determine Conditional Data Period End Date



# QA Status Evaluation Linearity – Evaluate Alternate Range



# QA Status Evaluation

## Linearity – Determine Test Expiration Dates

