

# Bulletins Live! Two (BLT)



**TRAINING AND DEMONSTRATION  
FOR THE PESTICIDE PROGRAM  
DIALOGUE COMMITTEE (PPDC)**

**THURSDAY, MAY 14, 2015**

# Endangered Species Protection Program (ESPP)



- Helps promote the recovery of listed species
- Designed to determine whether pesticide use in a certain geographic area may affect any listed species
- If limitations on pesticide use are necessary to protect listed species in that area, the information is relayed through Endangered Species Protection Bulletins
- Goal: to carry out responsibilities under FIFRA in compliance with ESA, without placing undue burden on agriculture and other pesticide users

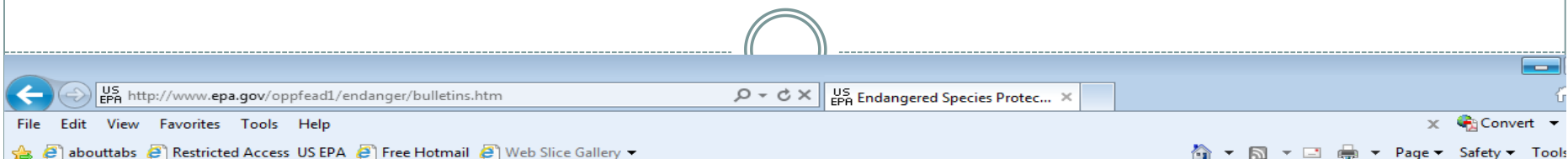
# Endangered Species Label Language



## Endangered Species:

It is a Federal offense to use any pesticide in a manner that results in the death of an endangered species. Use of this product may pose a hazard to endangered or threatened species. When using this product, you must follow the measures contained in the Endangered Species Protection Bulletin for the **area** in which you are applying the product. To obtain Bulletins, no more than six months before using this product, consult <http://www.epa.gov/espp/> or call 1-800-447-3813. You must use the Bulletin valid for the month in which you will apply the product.

# Bulletins Live! Two Home Page



## Pesticides: Endangered Species Protection Program

[Recent Additions](#) | [Contact Us](#)

Search:

☐ All EPA ☒ This Area

Go

You are here: [EPA Home](#) » [Pesticides](#) » [Environmental Effects](#) » [Endangered Species Protection Program](#) » Endangered Species Protection Bulletins

## Endangered Species Protection Bulletins

**Endangered Species Protection Bulletins** are a part of EPA's Endangered Species Protection Program. Bulletins set forth geographically specific pesticide use limitations for the protection of threatened and endangered (listed) species and their designated critical habitat. You can obtain Bulletins using EPA's [Bulletins Live! Two](#) application.

If your pesticide label directs you to this Web site, you are required to follow the pesticide use limitation(s) found in the Bulletin for your intended application area, pesticide active ingredient or product and application month.

EPA's Bulletins contain the following information:

- Map of the user-defined intended application area
- User-selected active ingredient and/or pesticide product to be applied
- Pesticide use limitation(s)
- Month for which the Bulletin is valid

### Important notes

- Bulletins may be accessed up to six months prior to pesticide application. Be sure that you follow the correct Bulletin for the month of your pesticide application.
- When referenced on a pesticide label, Bulletins are enforceable use limitations under the Federal Insecticide, Fungicide and Rodenticide Act (FIFRA).
- The pesticide use limitations found in [Bulletins Live! Two](#) are part of EPA's federal program to protect listed species. Your state may have pesticide use limitations beyond those found in your Bulletin. Bulletins are not intended to replace or override any restrictions that your state may impose. You need to be aware of and follow pesticide use limitations in your area according to both the state AND federal requirements.

U.S. ENVIRONMENTAL PROTECTION AGENCY

[Share](#)

[Pesticides Home](#)  
[Environmental Effects Home](#)

[Endangered Species Protection Program Home](#)

[Basic Information](#)

[Frequent Questions](#)

[Species Information](#)

[Bulletins Live!](#)

[Risk Assessment Process](#)

[Effects Determinations](#)

[For Kids:  
Coloring Book  
Poster](#)



[Go to Bulletins Live! Two!](#)

### QUICK START:

1. Click the Bulletins Live! link above to enter the system. Please ensure that you are accessing Bulletins Live! Two using one of the following Internet browsers: Internet Explorer (any version later than version 9), Google Chrome, Mozilla Firefox, or Safari.
2. Select your intended pesticide application area.
3. Select the application month.
4. You can further refine your search by entering the active ingredient, product name, or product registration number. The default search is for all products and active ingredients. Once you have entered your selection, click the "Search" button.
5. If a Pesticide Use Limitation Area (PULA) occurs within the selected area of intended pesticide application, click on the PULA to select it. A yellow border surrounding the PULA indicates that it has been selected. This will activate the Results Tab with the associated limitations. If there is no PULA within your intended pesticide application area, click the "Search button" to activate the "No Limitations" dialog box. In either case, click the "Printable Bulletin" button for a PDF version of the Bulletin which you can print or save.
6. Follow the steps found in the Bulletin.

EPA recommends reading the [Tutorial](#) (14 pp, 695 K, [about PDF](#)) for instructions on using Bulletins Live! Two before using the application for the first time or if you have questions as you use Bulletins Live! Two.

# ESPP Implementation



- **Bulletins identify:**
  - ✦ Date (month and year) for which the Bulletin is valid
  - ✦ Map showing the geographic area(s) associated with the protection measures
  - ✦ Active ingredient/Product
  - ✦ Use
  - ✦ Application method
  - ✦ Formulation
  - ✦ Code and corresponding description of the protection measures

# Differences Between Bulletins Live! and Bulletins Live! Two



## Bulletins Live!

- County-level map
- Active ingredient only
- Species of concern identified

## Bulletins Live! Two

- Interactive map
- Ability to search by:
  - Product (name & registration number)
  - Active ingredient
  - Location (state, county, specific address)
- No species of concern
- System to receive public comments on draft pesticide use limitation areas

# Labeling and Bulletins Live! Two



- **Schedule for posting pesticide use limitation areas (PULAs) in Bulletins Live! Two depends on:**
  - ✦ **PULAs being developed**
    - ✦ Registration Review
    - ✦ Consultations
    - ✦ Other related litigation
    - ✦ Other registration actions
  - ✦ **Products carrying a generic label statement referencing Bulletins Live! Two**

# Bulletins Live! Two Language – No PULA



- If there is no enforceable PULA in your intended pesticide application area, you will see the following:

“Currently, no pesticide use limitations exist within the printed map view for the month and year you selected, beyond the instructions specified on the pesticide label. Follow the use instructions on your label. Ensure that your pesticide application area is within the printed map view. If it is not, follow the directions on the Instructions Tab to ensure that your pesticide application area is captured within the printed map view. Please check back if you plan to apply your pesticide in an area outside the map view or in a month and year other than the one for which this Bulletin is valid.”

# PULAs in Bulletins Live! Two



- PULAs in 2 states relative to the use of methoxyfenozide
  - 1) Wisconsin
  - 2) Michigan
- PULAs in 7 states relative to the use of Rozol and Kaput-D Prairie Dog Bait
  - 1) Colorado
  - 2) Kansas
  - 3) Montana
  - 4) Texas
  - 5) South Dakota
  - 6) New Mexico
  - 7) Wyoming
- PULAs in 1 state relative to the use of thiobencarb on rice
  - 1) California

# Bulletins Live Two (front end/Public mapper)



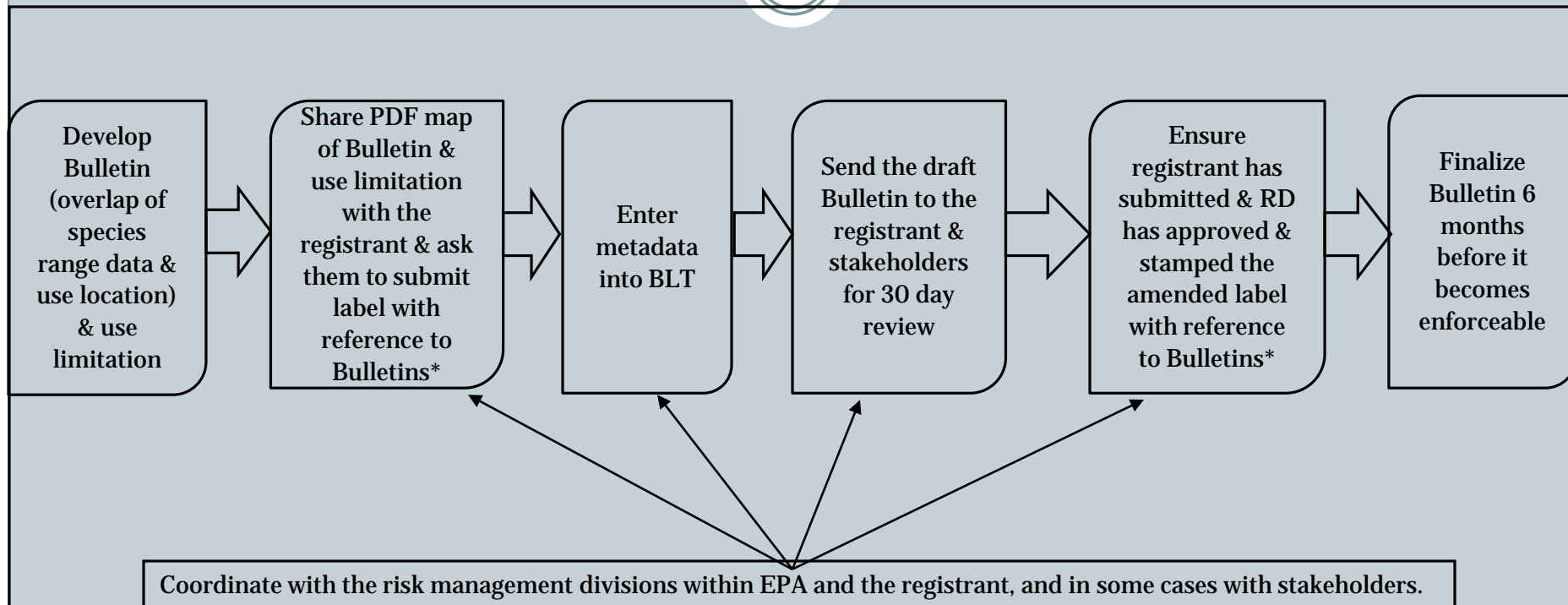
Bulletins Live! Two  
(front end/Public mapper)

# Bulletins Live Two (back end)



Bulletins Live! Two  
(back end)

# Process for Making Bulletins



\* label amendments typically take 90 days to process. However, this may be able to be done as a modification which takes 30 days to process.



*THANK YOU*

# Bulletins Live! Two – Front End (PUBLIC)



## Endangered Species Protection Bulletins



### INSTRUCTIONS

### RESULTS

## Protecting Endangered Species

**Directions:** This search tool provides Pesticide Use Limitation Areas (PULAs) for pesticide active ingredients and products with active Bulletins. To access Endangered Species Protection Bulletins from this search tool:

1. Zoom to your intended pesticide application area:
  - a. Manually zoom to a location by dragging the map to your location and using the "+" and "-" buttons to zoom in and out, or
  - b. Enter your intended pesticide application area into the Location Search Tool to automatically zoom to that location.
2. Select your Application Month.
3. Optional: Refine your search by entering a specific active ingredient or product and click the "Search" button. (Default is all active ingredients and products).
4. Click on the PULA within your intended pesticide application area to activate the Results Tab with the associated limitations and print your Bulletin. If no PULA is present, click the "Search" button to activate the "No Limitations" dialog box and print your Bulletin.
5. To complete an additional search, use the "Clear All" button to clear your current results.

Application Month:

February 2015

Active Ingredient:

All

Product Name:

Product Registration Number:

— OR —

# Select a month – 6 months in advance



## Endangered Species Protection Bulletins



### INSTRUCTIONS

### RESULTS

## Protecting Endangered Species

**Directions:** This search tool provides Pesticide Use Limitation Areas (PULAs) for pesticide active ingredients and products with active Bulletins. To access Endangered Species Protection Bulletins from this search tool:

1. Zoom to your intended pesticide application area:
  - a. Manually zoom to a location by dragging the map to your location and using the "+" and "-" buttons to zoom in and out, or
  - b. Enter your intended pesticide application area into the Location Search Tool to automatically zoom to that location.
2. Select your Application Month.
3. Optional: Refine your search by entering a specific active ingredient or product and click the "Search" button. (Default is all active ingredients and products).
4. Click on the PULA within your intended pesticide application area to activate the Results Tab with the associated limitations and print your Bulletin. If no PULA is present, click the "Search" button to activate the "No Limitations" dialog box and print your Bulletin.
5. To complete an additional search, use the "Clear All" button to clear your current results.

Application Month:

February 2015

February 2015

March 2015

April 2015

May 2015

June 2015

July 2015

August 2015

-- OR --

Product Registration Number:

Type Product Registration #

SEARCH

CLEAR ALL

# Bulletins Live! Two – Search Options



## Endangered Species Protection Bulletins



### INSTRUCTIONS

### RESULTS

## Protecting Endangered Species

**Directions:** This search tool provides Pesticide Use Limitation Areas (PULAs) for pesticide active ingredients and products with active Bulletins. To access Endangered Species Protection Bulletins from this search tool:

1. Zoom to your intended pesticide application area:
  - a. Manually zoom to a location by dragging the map to your location and using the "+" and "-" buttons to zoom in and out, or
  - b. Enter your intended pesticide application area into the Location Search Tool to automatically zoom to that location.
2. Select your Application Month.
3. Optional: Refine your search by entering a specific active ingredient or product and click the "Search" button. (Default is all active ingredients and products).
4. Click on the PULA within your intended pesticide application area to activate the Results Tab with the associated limitations and print your Bulletin. If no PULA is present, click the "Search" button to activate the "No Limitations" dialog box and print your Bulletin.
5. To complete an additional search, use the "Clear All" button to clear your current results.

Application Month:

February 2015

Active Ingredient:

All

Product Name:

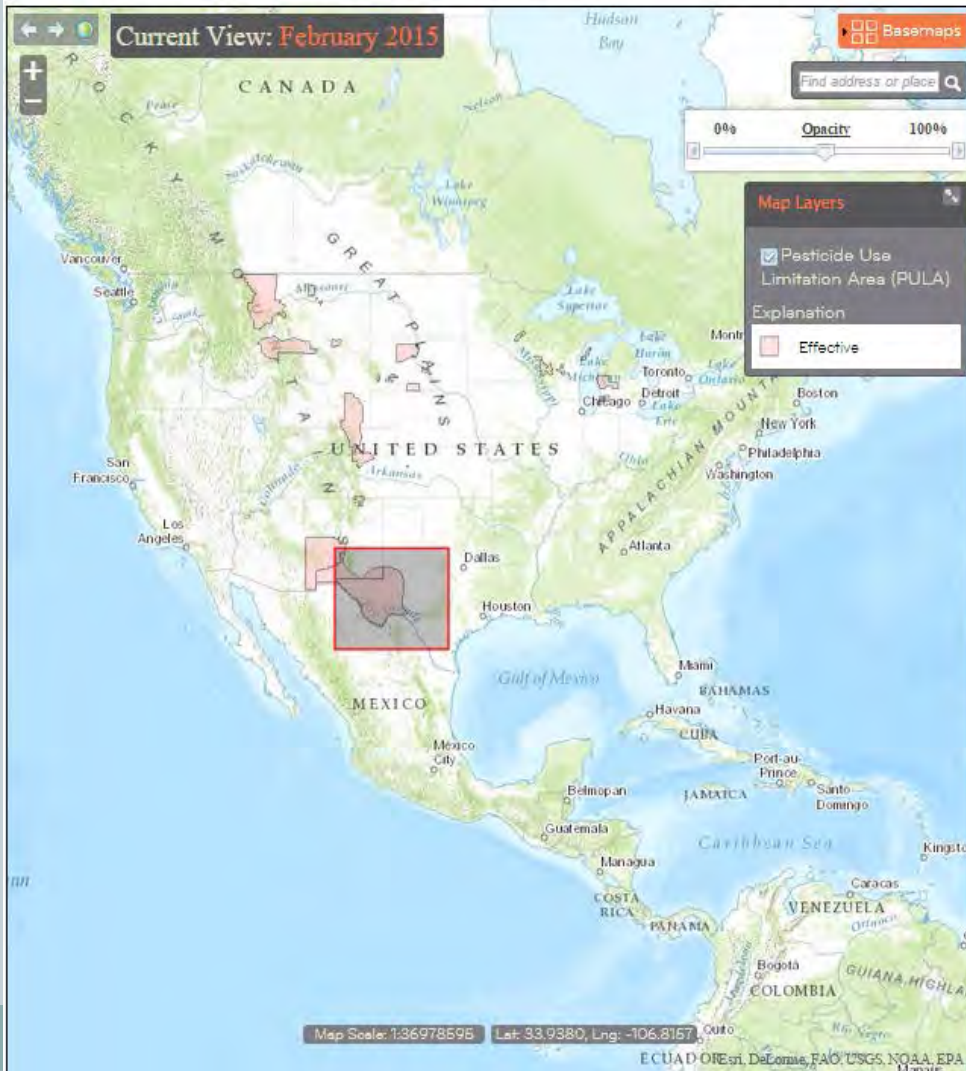
Product Registration Number:

— OR —

# Zooming in



## Endangered Species Protection Bulletins



### INSTRUCTIONS

### RESULTS

## Protecting Endangered Species

**Directions:** This search tool provides Pesticide Use Limitation Areas (PULAs) for pesticide active ingredients and products with active Bulletins. To access Endangered Species Protection Bulletins from this search tool:

1. Zoom to your intended pesticide application area:
  - a. Manually zoom to a location by dragging the map to your location and using the "+" and "-" buttons to zoom in and out, or
  - b. Enter your intended pesticide application area into the Location Search Tool to automatically zoom to that location.
2. Select your Application Month.
3. Optional: Refine your search by entering a specific active ingredient or product and click the "Search" button. (Default is all active ingredients and products).
4. Click on the PULA within your intended pesticide application area to activate the Results Tab with the associated limitations and print your Bulletin. If no PULA is present, click the "Search" button to activate the "No Limitations" dialog box and print your Bulletin.
5. To complete an additional search, use the "Clear All" button to clear your current results.

Application Month:

February 2015

Active Ingredient:

All

Product Name:

Start typing Product name:

-- OR --

Product Registration Number:

Type Product Registration #

SEARCH

CLEAR ALL

# Location Search Bar with Hover Function

## Endangered Species Protection Bulletins

The screenshot displays a web application for "Endangered Species Protection Bulletins". The interface is divided into a map area on the left and a search/results panel on the right.

**Map Area:**

- Current View:** February 2015
- Basemaps:** A button to toggle between different map backgrounds.
- Find address:** A text input field for searching locations.
- Opacity:** A slider control to adjust the transparency of the map layers.
- Map Layers:** A panel showing the "Pesticide Use Limitation Area (PULA)" layer, which is currently checked and set to "Effective".
- Map:** A map of Texas and surrounding regions (New Mexico, Chihuahua, Coahuila) showing the PULA in pink. Major cities like El Paso, Ciudad Juárez, San Antonio, and Austin are labeled. The map scale is 1:462,232, and the coordinates are Lat: 34.2095, Lng: -98.9147.

**Search/Results Panel:**

- INSTRUCTIONS:** A tab providing search instructions.
- RESULTS:** A tab showing the search results.
- Example search criteria:** A list of criteria including City, County, Landmark, Zip code, and Full address.
- Application Month:** A dropdown menu set to "February 2015".
- Active Ingredient:** A dropdown menu set to "All".
- Product Name:** A text input field with a placeholder "Start typing Product name".
- Product Registration Number:** A text input field with a placeholder "Type Product Registration #".
- SEARCH:** A button to initiate the search.
- CLEAR ALL:** A button to clear the search criteria.

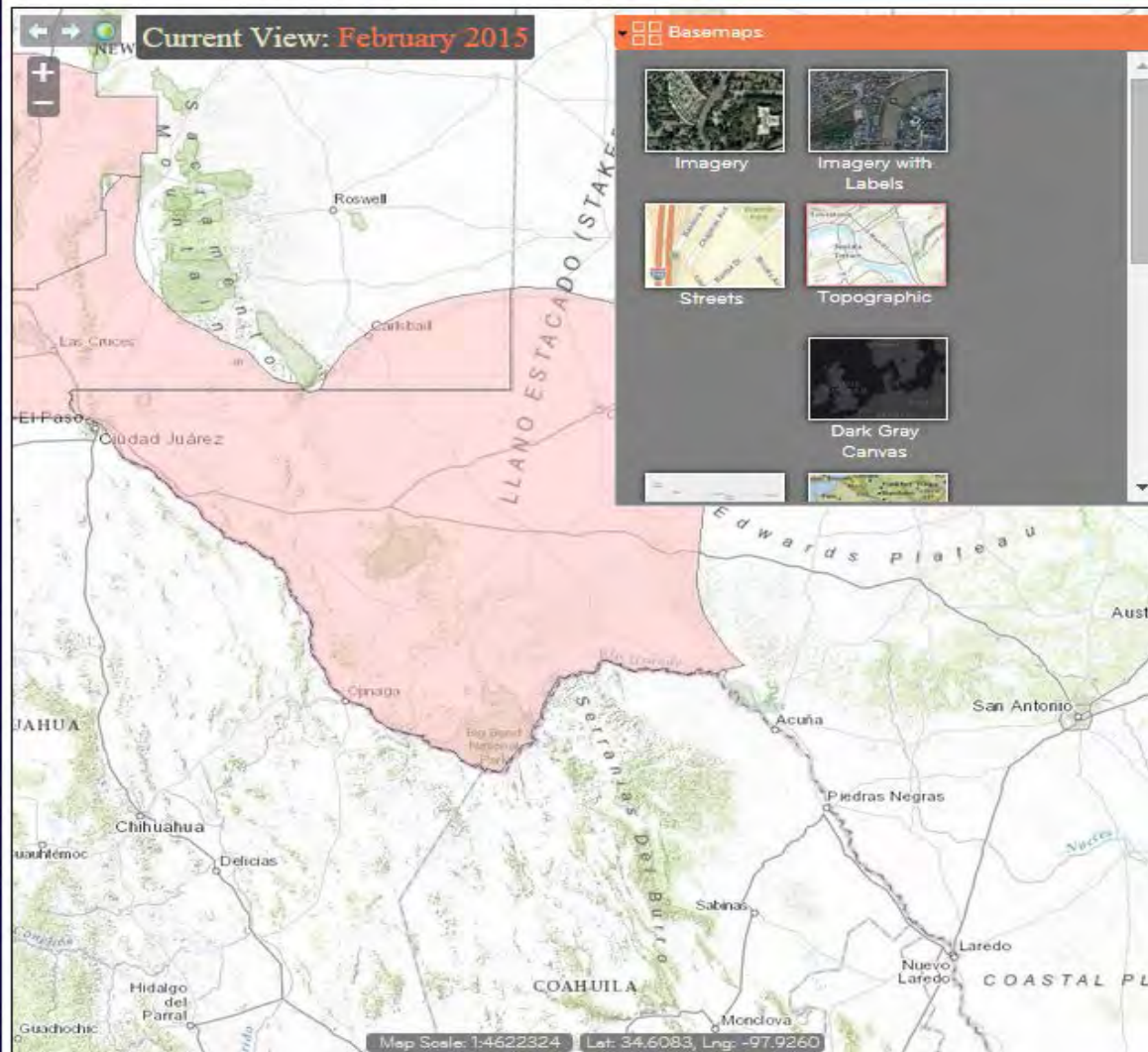
**Instructions:**

- Manually zoom to a location by dragging the map to your location and using the "+" and "-" buttons to zoom in and out, or
- Enter your intended pesticide application area into the Location Search Tool to automatically zoom to that location.
- Select your Application Month.
- Optional: Refine your search by entering a specific active ingredient or product and click the "Search" button. (Default is all active ingredients and products).
- Click on the PULA within your intended pesticide application area to activate the Results Tab with the associated limitations and print your Bulletin. If no PULA is present, click the "Search" button to activate the "No Limitations" dialog box and print your Bulletin.
- To complete an additional search, use the "Clear All" button to clear your current results.

# Basemaps



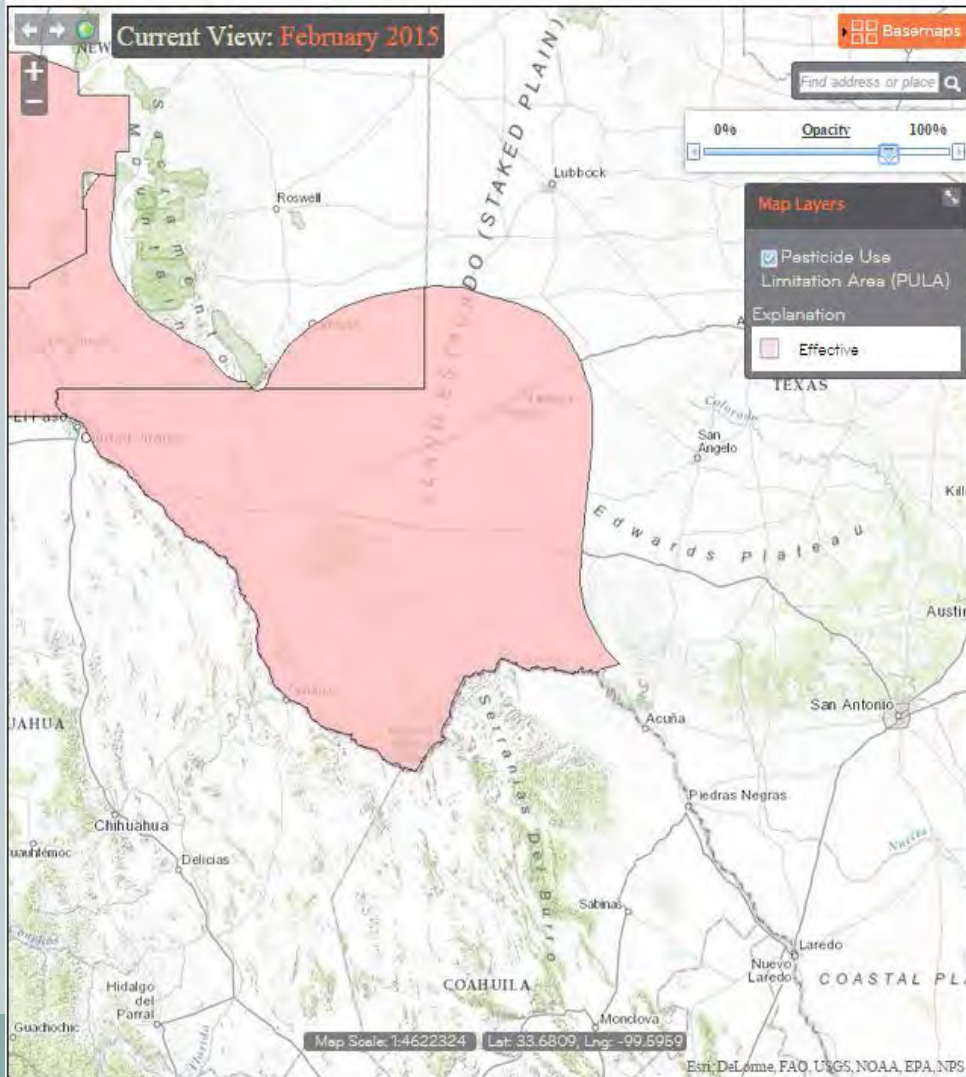
## Endangered Species Protection Bulletins



# Opacity Slider



## Endangered Species Protection Bulletins



### INSTRUCTIONS

### RESULTS

## Protecting Endangered Species

**Directions:** This search tool provides Pesticide Use Limitation Areas (PULAs) for pesticide active ingredients and products with active Bulletins. To access Endangered Species Protection Bulletins from this search tool:

- Zoom to your intended pesticide application area:
  - Manually zoom to a location by dragging the map to your location and using the "+" and "-" buttons to zoom in and out, or
  - Enter your intended pesticide application area into the Location Search Tool to automatically zoom to that location.
- Select your Application Month.
- Optional: Refine your search by entering a specific active ingredient or product and click the "Search" button. (Default is all active ingredients and products).
- Click on the PULA within your intended pesticide application area to activate the Results Tab with the associated limitations and print your Bulletin. If no PULA is present, click the "Search" button to activate the "No Limitations" dialog box and print your Bulletin.
- To complete an additional search, use the "Clear All" button to clear your current results.

Application Month:

February 2015

Active Ingredient:

All

Product Name:

Start typing Product name

-- OR --

Product Registration Number:

Type Product Registration #

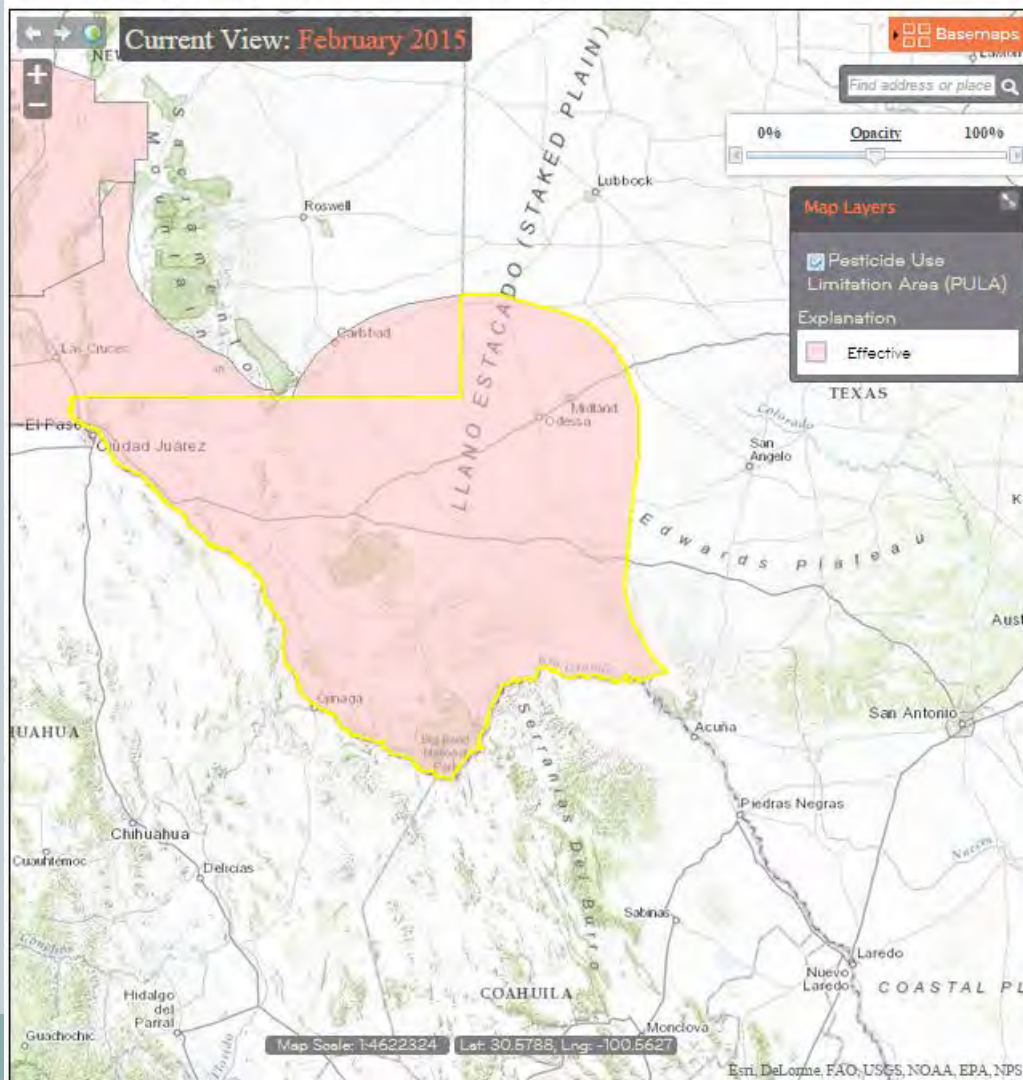
SEARCH

CLEAR ALL

# Selected PULA and Results Tab



## Endangered Species Protection Bulletins



### INSTRUCTIONS

### RESULTS

#### Pesticide Use Limitation Summary Table

AI/Product	Use	App Method	Formulation	Code
Rozol Prairie Dog Bait	Black-tailed Prairie Dog	Bait (loose)	Bait	R6
Kaput D Prairie Dog Bait	Black-tailed Prairie Dog	Bait (loose)	Bait	K6
Chlorophacinone	Black-tailed Prairie Dog	Bait (loose)	Bait	R6
Diphacinone	Black-tailed Prairie Dog	Bait (loose)	Bait	K6

#### Codes and Limitations Table

Code	Limitation
R6	Prairie dog colonies in this county may be occupied by the federally endangered northern aplomado falcon. Rozol Prairie Dog Bait application may be harmful to the northern aplomado falcon. Please contact the U.S. Fish and Wildlife Service (FWS) at 817-277-1100 to find out where northern aplomado falcons occur in the county before application. In the event that it is necessary to leave a voice mail message, FWS should respond within three (3) business days. If you do not receive a response back from the FWS within three (3) business days, you may apply Rozol Prairie Dog Bait.
K6	Prairie dog colonies in this county may be occupied by the federally endangered northern aplomado falcon. Kaput-D Prairie Dog Bait application may be harmful to the northern aplomado falcon. Please contact the U.S. Fish and Wildlife Service (FWS) at 817-277-1100 to find out where northern aplomado falcons occur in the county before application. In the event that it is necessary to leave a voice mail message, FWS should respond within three (3) business days. If you do not receive a response back from the FWS within three (3) business days, you may apply Kaput-D Prairie Dog Bait.

Printable Bulletin

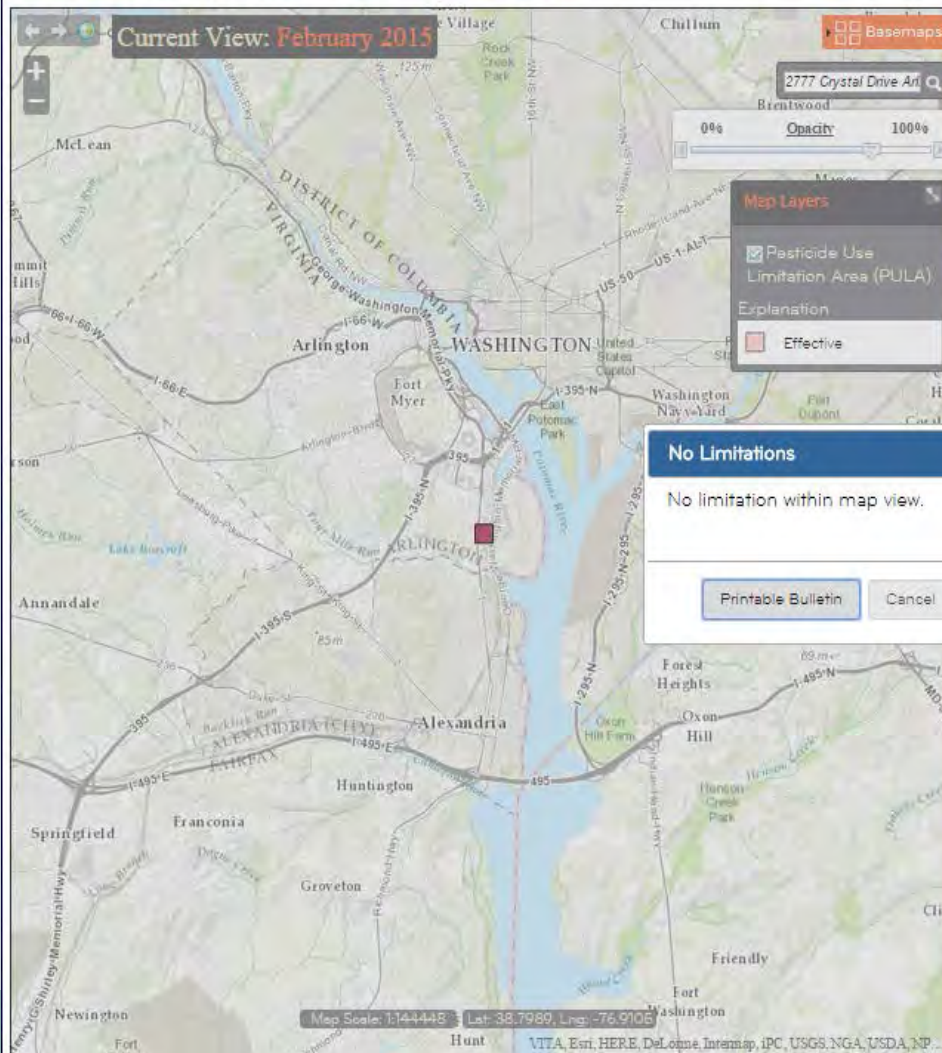
# Printable Bulletins with PULA



# No Limitation Pop Up



## Endangered Species Protection Bulletins



INSTRUCTIONS

RESULTS

### Protecting Endangered Species

**Directions:** This search tool provides Pesticide Use Limitation Areas (PULAs) for pesticide active ingredients and products with active Bulletins. To access Endangered Species Protection Bulletins from this search tool:

- Zoom to your intended pesticide application area:
  - Manually zoom to a location by dragging the map to your location and using the "+" and "-" buttons to zoom in and out, or
  - Enter your intended pesticide application area into the Location Search Tool to automatically zoom to that location.
- Select your Application Month.
- Optional: Refine your search by entering a specific active ingredient or product and click the "Search" button. (Default is all active ingredients and products).
- Click on the PULA within your intended pesticide application area to activate the Results Tab with the associated limitations and print your Bulletin. If no PULA is present, click the "Search" button to activate the "No Limitations" dialog box and print your Bulletin.
- To complete an additional search, use the "Clear All" button to clear your current results.

Application Month:  
February 2015

Active Ingredient:  
All

Product Name:  
Start typing Product name

— OR —

Product Registration Number:  
Type Product Registration #

**SEARCH** **CLEAR ALL**

# Printable Bulletin – No PULA



# Bulletins Live! Two – Back End (Login)

A mockup of a login form for 'EPA BULLETINS LIVE!'. The form is dark gray with rounded corners and is centered on a light gray background. It features a title at the top, followed by 'User name' and 'Password' labels. The user name field is highlighted in yellow and contains the text 'MELISSA'. The password field is white with a blue border and contains a series of dots. Below the password field is a 'Remember me' checkbox. At the bottom right is an orange 'Log On' button with a lock icon.

EPA BULLETINS LIVE!


User name

MELISSA

Password

.....

☐ Remember me

 Log On

# BLT Back End – Logged In As Guest



Welcome **guest!** [ Log Off ]

Bulletins Live - Home Page



Choose a PULA shape to get started.

# Enter/Submit Comments As Guest



Welcome guest! [ Log Off ]

Bulletins Live - Home Page



Details

## GENERAL INFORMATION

Effective Date:

## LIMITATIONS

Active Ingredient/Product	Application Method	Formulation	Crop Use	Code
THE GIANT DESTROYER	Animal burrow treatment	Gas cartridge	Any Use	C1
GAS CARTRIDGE	Animal burrow treatment	Gas cartridge	Any Use	C1
LARGE GAS CARTRIDGE	Animal burrow treatment	Gas cartridge	Any Use	C1
REVENGE RODENT SMOKE BOMB	Animal burrow treatment	Gas cartridge	Any Use	C1
AMDR GOPHER GASSER	Animal burrow treatment	Gas cartridge	Any Use	C1
SMOKE EM	Animal burrow treatment	Gas cartridge	Any Use	C1

## LIMITATION CODES

Code	Limitation
C1	Use of gas cartridges (carbon dioxide, carbon, sodium nitrate, potassium nitrate, and sulfur) is prohibited in this area.

## COMMENTS



Name:

Organization:

Comment:

Submit


# Comments Submitted



Welcome MELISSA! [ Log Off ]

HOME PARTS USERS

Bulletins Live - Home Page



Basemaps

Find address or place

Date Filter

PULA Filter

Map Layers

☒ Pending  
☒ Created  
☒ Published  
☒ Effective  
☒ Expired

Explanation

☐ Pending  
☐ Created  
☐ Published  
☐ Effective  
☐ Expired

Details

GENERAL INFORMATION

Event: Gas Cartridges  
Effective Date: 5/12/2014  
Creation Date: Melissa Grable  
Created By: --Month--  
Expiration Date: --Year--  
[Add Expiration Date](#)

PULA JUSTIFICATION

Registration Review, Proposed Interim Decision: Registrants agreed to PULA pre consultation; when announced a copy of the announcement will be added to the Justification Documentation folder  
Base Date: PRD requested species locations from field offices. see file "Species by FWS Office-call assignments" under Species contact\_Metadata for additional species  
Base Date Modifiers: Reprojected if needed; see BLT\_reprojections\_log\_Final  
Additional Information: Clipped polygons that extended into water to land for terrestrial species (IBKR, Island Foxes, Island Night Lizard)

LIMITATIONS

Active Ingredient/Product	Crop Use	Application Method	Formulation	Code
THE GIANT DESTROYER [RegNum:10581-1]	Any Use	Animal burrow treatment	Gas cartridge	TI
GAS CARTRIDGE [RegNum:56225-2]	Any Use	Animal burrow treatment	Gas cartridge	TI
LARGE GAS CARTRIDGE [RegNum:56225-21]	Any Use	Animal burrow treatment	Gas cartridge	TI
REVENGE RODENT SMOKE [RegNum:9086-4]	Any Use	Animal burrow treatment	Gas cartridge	TI
AMDR GORHER GASSER [RegNum:73342-8]	Any Use	Animal burrow treatment	Gas cartridge	TI
SMOKE EM [RegNum:4-463]	Any Use	Animal burrow treatment	Gas cartridge	TI

SPECIES

- Carolina northern flying squirrel | *Glaucomys sabrinus coloratus*
- Cochella Valley fringe-toed lizard | *Uma inornata*
- Desert slender salamander | *Banshosops andrus*
- Gopher tortoise | *Gopherus polyphemus*
- Huasteca Mexican vole | *Microtus mexicanus huastecensis*
- Morro Bay kangaroo rat | *Dipodomys heermanni morroensis*
- Mount Graham red squirrel | *Tamiasciurus hudsonicus grahamensis*
- San Miguel Island Fox | *Urocyon littoralis littoralis*
- Santa Cruz Island Fox | *Urocyon littoralis santacruzensis*
- Santa Rosa Island Fox | *Urocyon littoralis santacruzensis*
- Utah prairie dog | *Cynomys penicillatus*







CONTRIBUTOR COMMENTS

Name	Organization	Comment
John Smith	Company C	Testing comments
Mary Johnson	Company X	My comments will be very interesting for you to read.

Export to CSV

[Edit PULA](#) [Generate Contributor Password](#) [Publish PULA](#)


# Date Filter for Enforcement



Welcome MELISSA! [ Log Off ]

[HOME](#) [PARTS](#) [USERS](#)

Bulletins Live - Home Page



Basemaps

Find address or place

Date Filter

Date

February 2015

Submit Current

PULA Filter

Map Layers

Choose a PULA shape to get started.

Map Scale: 1:36978595  
Lat: 52.2540, Lng: -84.6704