

RELATIONSHIP TO 78

- NOTES:
- 1 - SPEC MIL - A - 2550 AND ANSI Y14.5-1973 APPLY.
 - 2 - LOAD WITH APPROXIMATELY 335 OZ PROPELLANT M6 WEB .055 MP SPEC MIL - P - 63404. NOTE 3
 - 3 - AFTER LOADING, CLOSE FILLING OPENING AS SHOWN IN FIG 1. NOTE 5
 - 4 - AFTER CLOSING FILLING OPENING FOLD REMAINING PORTION OF HEM AND SEW AS SHOWN IN FIG 2. NOTE 5
 - 5 - SEAM 301 - S5a - 1, 8 TO 12 STITCHES PER INCH, FED - STD - 751, USING THREAD, POLYESTER, TYPE 1, CLASS 1, SIZE 5B OR E, SPEC MIL - T - 63072. NOTE 6
 - 6 - ALTERNATIVE THREAD: THREAD, SILK, SEWING, CLASS 1, SPEC MIL - T - 13505.
 - 7 - TO AVOID HIDDEN DAMAGE TO FABRIC WHILE PACKING PROPELLANT DURING BAG LOADING, THE BAG WILL NOT BE BOUNCED AGAINST BARE METAL PLATE; CUSHION PLATE PERMITTED.
 - 8 - TO MINIMIZE FREE SPACE AFTER PROPELLANT HAS BEEN LOADED IN BAG, THE BAG SHALL BE SIZED SO THAT IT IS NECESSARY TO MANUALLY OR MECHANICALLY VIBRATE THE FINAL PORTION OF THE PROPELLANT INTO THE BAG.
 - 9 - TRIM ALL EXCESS THREADS TO 1/4 MAX ON CHARGE.

REV	DESCRIPTION	DATE	BY
-	PRODUCTION RELEASE ERR ADAZ051	80-08-21	ATV
A	NORAIAR001 81-08-17	81-09-22	ATV
B	NORAIAR052 81-11-11	81-12-11	ATV

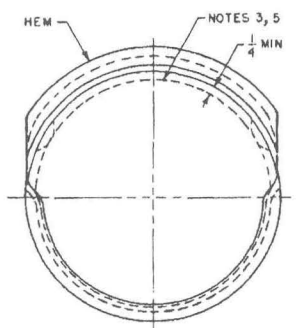


FIG 1

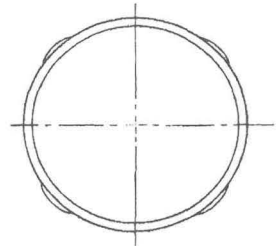
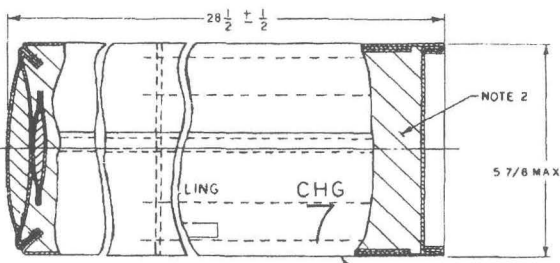


FIG 2

SEE SEPARATE PARTS LIST 9340443		PART NO. 9340443	
REV	DESCRIPTION	DATE	BY
1	CHG, PROP, 155MM M119A2		
2	END, CHARGE AND FLASH REDUCER, LOADING ASSEMBLY AND BASE IGNITER, LOADING ASSEMBLY - 9340444		
3			
4			
5			
6			
7			
8			
9			
10			
11			
12			
13			
14			
15			
16			
17			
18			
19			
20			
21			
22			
23			
24			
25			
26			
27			
28			
29			
30			
31			
32			
33			
34			
35			
36			
37			
38			
39			
40			
41			
42			
43			
44			
45			
46			
47			
48			
49			
50			
51			
52			
53			
54			
55			
56			
57			
58			
59			
60			
61			
62			
63			
64			
65			
66			
67			
68			
69			
70			
71			
72			
73			
74			
75			
76			
77			
78			
79			
80			
81			
82			
83			
84			
85			
86			
87			
88			
89			
90			
91			
92			
93			
94			
95			
96			
97			
98			
99			
100			