



RadMap

Desktop Information on Radiation Monitors Nationwide

Designed for use by emergency responders, *especially* for when the internet is congested or unavailable, RadMap is an interactive desktop tool featuring a nationwide map of long-term radiation monitoring locations across the United States and access to key information about the monitor and the area surrounding it.

In the event of a radiation release, RadMap can help emergency responders collect information, develop assessments, and determine the placement of deployable monitors. Desktop access could be critical should other systems fail in an emergency.

Users can highlight an area to identify key information about the monitor and to characterize the monitor location. RadMap provides easy access to:

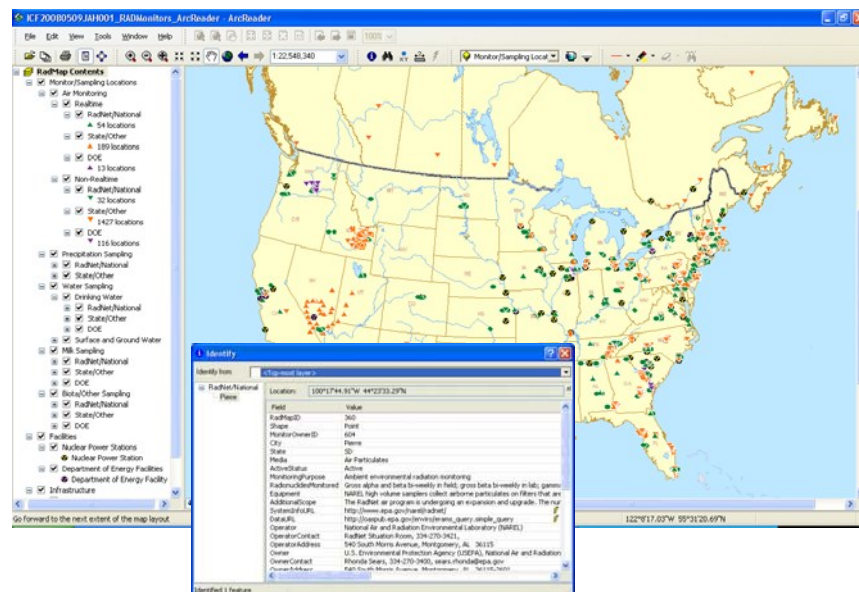
Monitor locations

- Points of contact for specific monitoring systems
- What data is being collected and how often
- Real-time and long-term data, where and when available online
- Information on population centers from the 2000 census
- Geographic features such as nearby roads and bodies of water
- Mileage of locations from other points on the map

RadMap monitoring locations and data currently include monitors from EPA's RadNet, Department of Energy (DOE) facilities, nuclear power plants, states, education centers, and others. RadMap also features:

- Password protected internet site with the desktop application available for download
- Automatic e-mail notification of RadMap updates, including the placement of new monitors to registered users

RadMap helps fulfill one of EPA's critical homeland security's responsibilities under the National Response Plan (NRP) and addresses recommendations made by both the Conference of Radiation Control Program Directors (CRCPD) and EPA's Science Advisory Board (SAB).



RadMap (see screenshot at left) is accessed using the free ESRI ArcReader software (www.esri.com/arcreader).

If you have any questions, or you have additional radiation monitoring information to include on RadMap, please contact:

Dennis Hellberg, Project Manager at hellberg.dennis@epa.gov or (202) 343-9366.