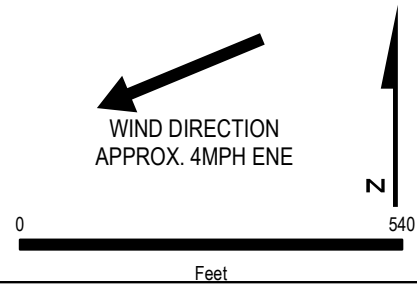




**LEGEND**

-  Air Monitor Locations
-  Burn Tray Location



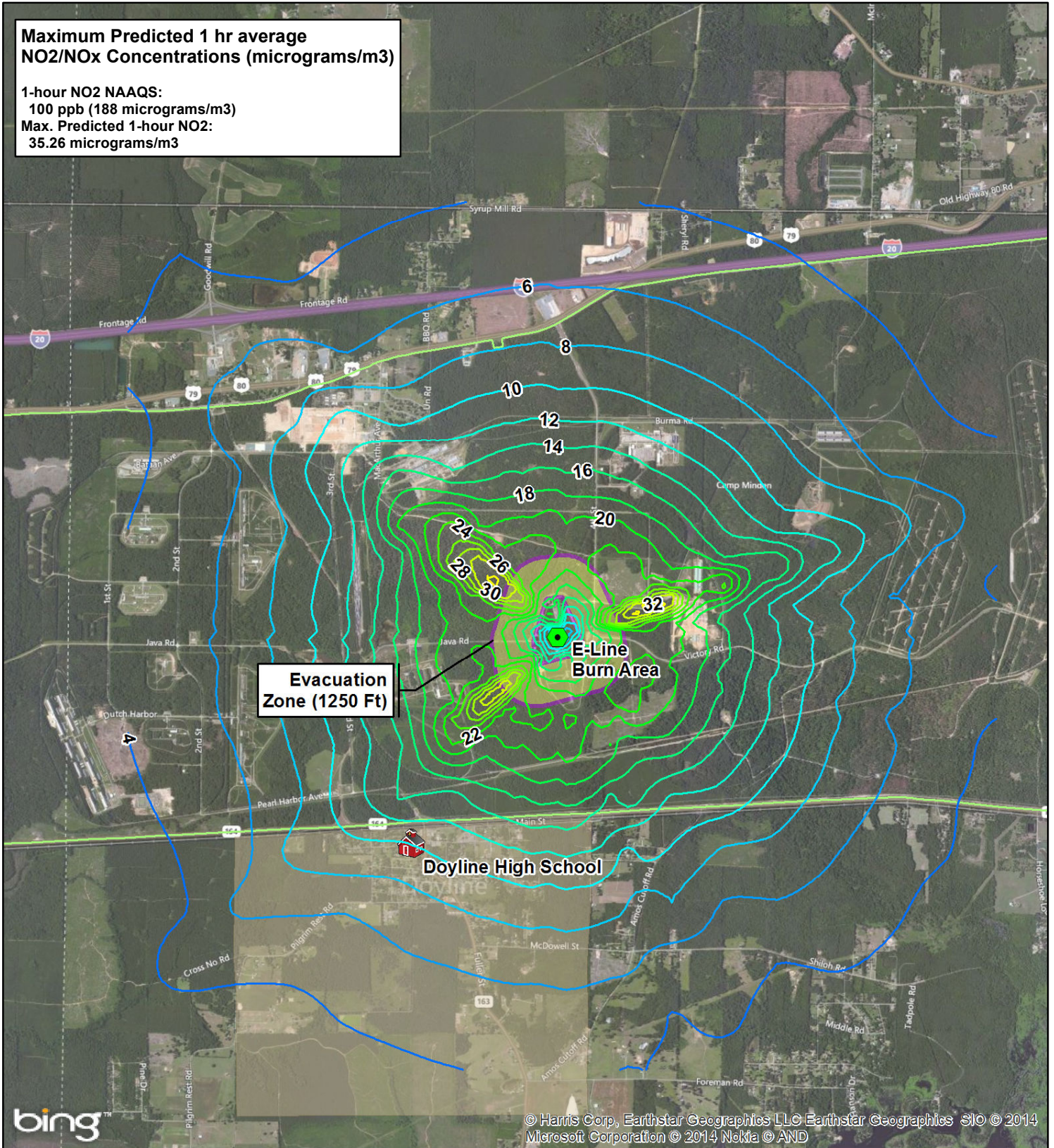
**US EPA REGION 6**

**FIGURE 1**  
Air Monitoring Locations M6 Propellant  
Test Burn – December 3, 2014

DATE DECEMBER, 2014	PROJECT NO XXXXX.XXX.XXX.XXXX	SCALE AS SHOWN
------------------------	----------------------------------	-------------------

**Maximum Predicted 1 hr average NO2/NOx Concentrations (micrograms/m3)**

1-hour NO2 NAAQS:  
 100 ppb (188 micrograms/m3)  
 Max. Predicted 1-hour NO2:  
 35.26 micrograms/m3



**Legend**

**NOx 1-hour Average (micrograms/m3)**

4	10	16	22	28
6	12	18	24	30
8	14	20	26	32

**US EPA REGION 6**  
**Explo Systems, Inc.**  
 M6 Propellant Open  
 Burn Air Model



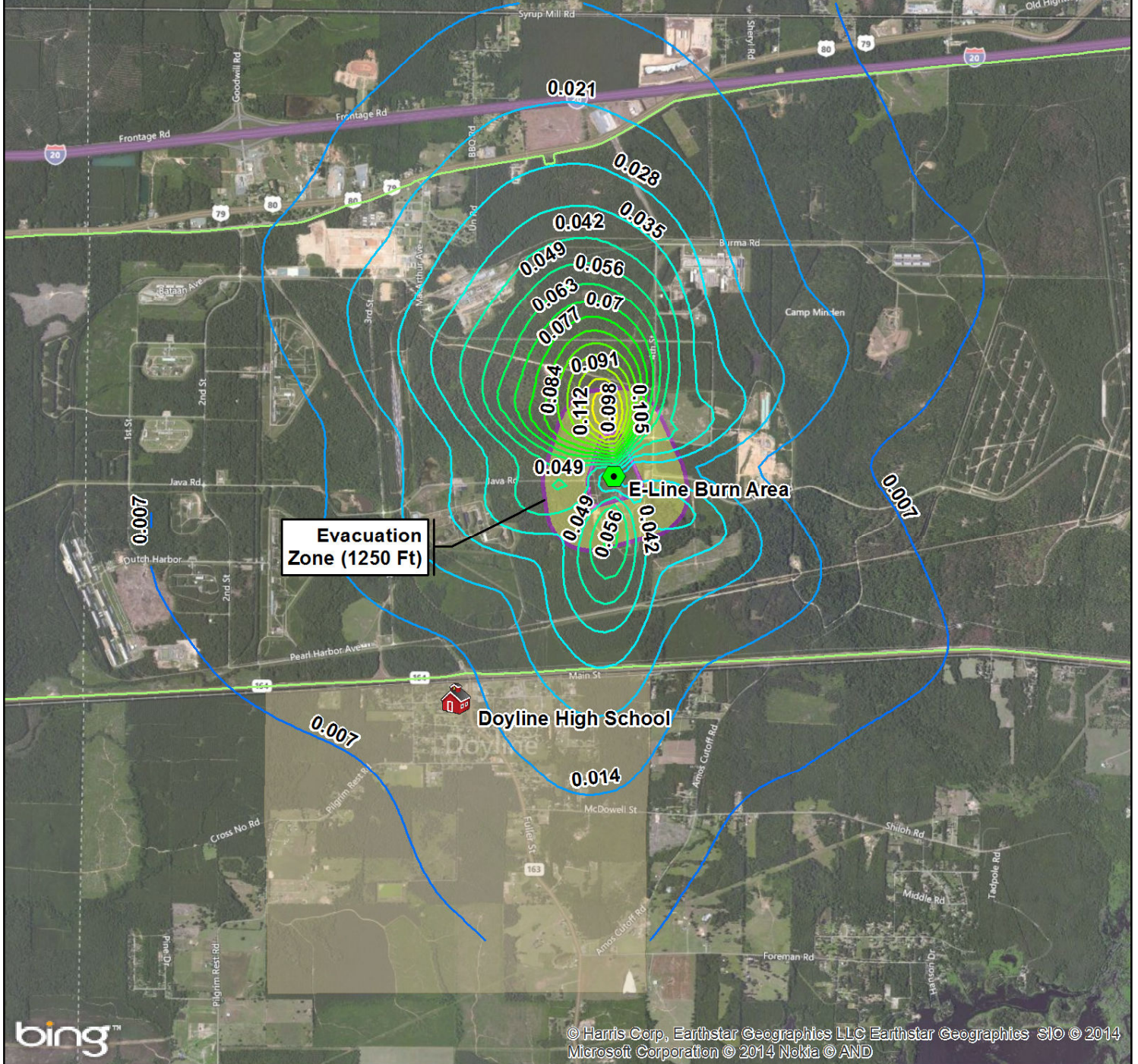
0 1,000 2,000 4,000  
 SCALE IN FEET



For Official Use Only

**Maximum Predicted Annual Max NO2/NOx Concentrations (micrograms/m3)**

Annual NO2 NAAQS:  
53 ppb (100 micrograms/m3)  
Max. Predicted Annual NO2:  
0.12 micrograms/m3



**Evacuation Zone (1250 Ft)**

**E-Line Burn Area**

**Doyline High School**



© Harris Corp, Earthstar Geographics LLC Earthstar Geographics SIO © 2014 Microsoft Corporation © 2014 Nokia © AND

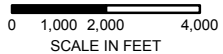
**Legend**

**NOx Annual Max (micrograms/m3)**

0.007	0.035	0.063	0.091
0.014	0.042	0.070	0.098
0.021	0.049	0.077	0.105
0.028	0.056	0.084	0.112

**US EPA REGION 6  
Explo Systems, Inc.**

M6 Propellant Open Burn Air Model

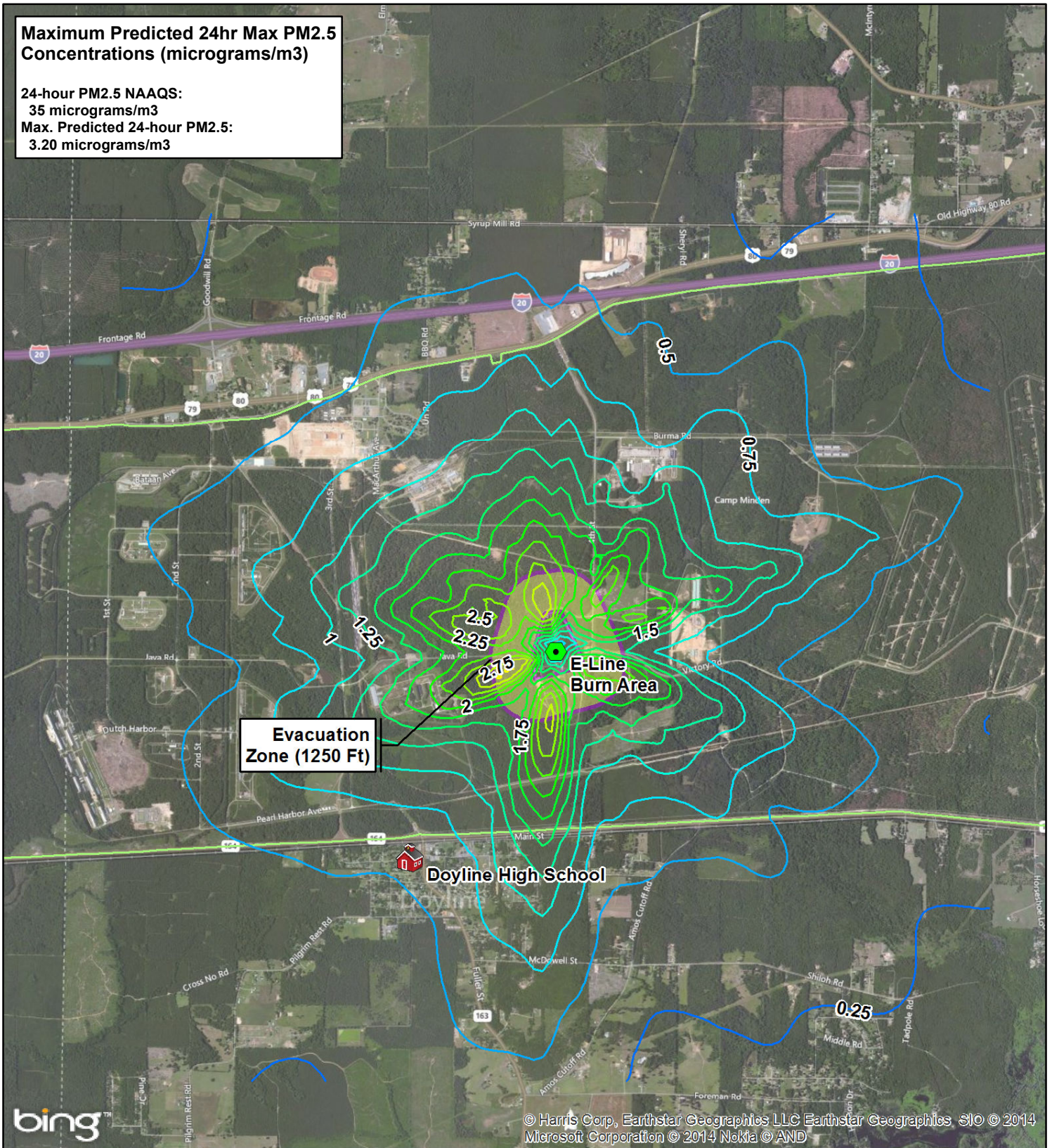


For Official Use Only



**Maximum Predicted 24hr Max PM2.5 Concentrations (micrograms/m3)**

24-hour PM2.5 NAAQS:  
 35 micrograms/m3  
 Max. Predicted 24-hour PM2.5:  
 3.20 micrograms/m3



**Evacuation Zone (1250 Ft)**

**E-Line Burn Area**

**Doyline High School**

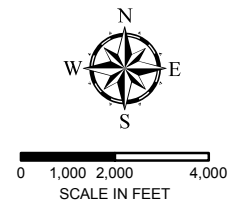


© Harris Corp, Earthstar Geographics LLC Earthstar Geographics SIO © 2014 Microsoft Corporation © 2014 Nokia © AND

**Legend  
 PM2.5 24 Hour Max (micrograms/m3)**

- 0.25    — 1.25    — 2.25
- 0.50    — 1.50    — 2.50
- 0.75    — 1.75    — 2.75
- 1.00    — 2.00    — 3.00

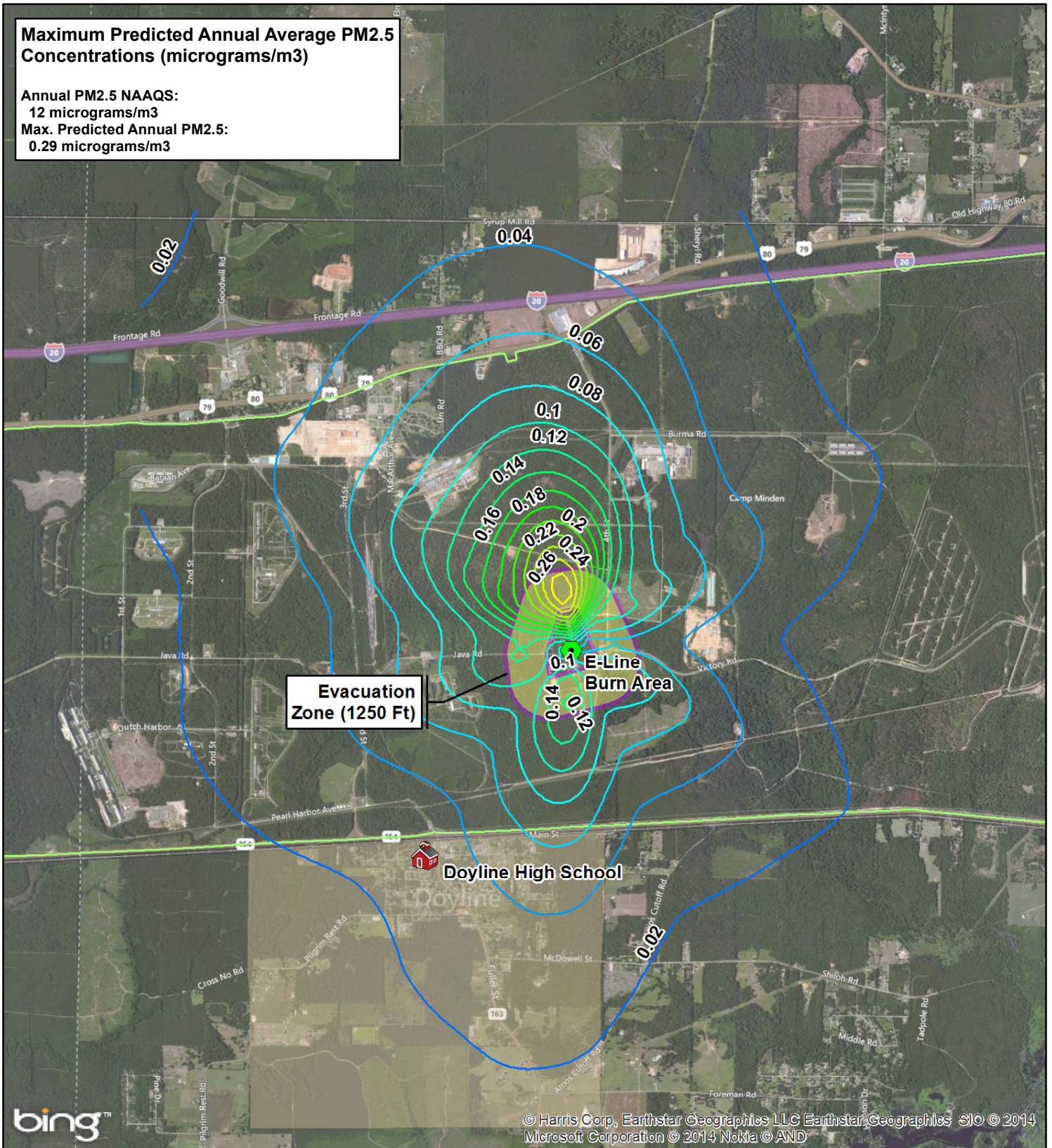
**US EPA REGION 6  
 Explo Systems, Inc.**  
 M6 Propellant Open  
 Burn Air Model



For Official Use Only

**Maximum Predicted Annual Average PM2.5 Concentrations (micrograms/m3)**

Annual PM2.5 NAAQS:  
12 micrograms/m3  
Max. Predicted Annual PM2.5:  
0.29 micrograms/m3

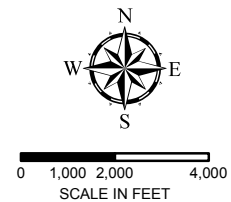


**Legend**

**PM2.5 Annual Average (micrograms/m3)**

0.02	0.10	0.18	0.26
0.04	0.12	0.20	0.28
0.06	0.14	0.22	
0.08	0.16	0.24	

**US EPA REGION 6**  
**Explo Systems, Inc.**  
M6 Propellant Open Burn Air Model



For Official Use Only