

Cover Sheet for

ENVIRONMENTAL CHEMISTRY METHOD

Pesticide Name: Metsulfuron-Methyl (Harmony)

MRID #: 418217-01

Matrix: Soil

Analysis: HPLC/UV

This method is provided to you by the Environmental Protection Agency's (EPA) Environmental Chemistry Laboratory (ECL). This method *is not* an EPA method but one which was submitted to EPA by the pesticide manufacturer to support product registration. EPA recognizes that the methods may be of some utility to state, tribal, and local authorities, but makes no claim of validity by posting these methods. Although the Agency reviews *all* Environmental Chemistry Methods submitted in support of pesticide registration, the ECL evaluates only about 30% of the currently available methods. Most methods perform satisfactorily but some, particularly the older methods, have deficiencies. Moreover, the print quality of the methods varies considerably because the methods originate from different sources. Therefore, the methods offered represent the best available copies.

If you have difficulties in downloading the method, or further questions concerning the methods, you may contact Elizabeth Flynt at 228-688-2410 or via e-mail at flynt.elizabeth@epa.gov.

MRID 41821701

**RESIDUE METHOD FOR EXTRACTION AND ANALYSIS OF HARMONY®
FROM SOIL MATRICES USING HPLC WITH ELUENT AND
COLUMN SWITCHING AND UV DETECTION**

Authors

M. P. Wadsley and L. R. Proksch

Study Completed on

November 17, 1989

Performing Laboratory

E. I. du Pont de Nemours & Company, Inc.
Agricultural Products Department
Research and Development Division
Experimental Station
Wilmington, DE 19880

Laboratory Project ID

AMR-1550-89

ABSTRACT

DPX-M6316 (Harmony®) was extracted from soil and detected using a reversed-phase HPLC method and UV detection. The quantitation limit was 100 parts per trillion (ppt). The extraction procedure involved agitation of the soil in the presence of organic solvents, concentration and a sample clean-up prior to analysis. The HPLC separation for analysis utilized both eluent and column switching (Reference 1) to allow UV detection at 230 nm. Several types of soil samples were analyzed to determine method ruggedness. These samples were obtained from Sweden, classified as Organogenic, Sand, and Clay.

INTRODUCTION

A method for simultaneously extracting and analyzing DPX-M6316 (Harmony®, Figure 1) Herbicide in soil has been developed. The quantitation limit is 100 parts per trillion (ppt) on a 400 gram soil sample. The method involves a methylene chloride and acetonitrile extraction of the soil, requiring vigorous agitation for 2 minutes, a concentration and clean-up step followed by reversed phase HPLC analysis and UV detection. Column switching, between a phenyl and an ODS column, was coupled with eluent switching between an acidic and basic aqueous mobile phase (Reference 1). This provided a background adequately low as to allow UV detection of M6316 at the 100 ppt level in several soil types.

A validation method using thermospray LC/MS with the selected ion monitoring can be incorporated for both detection and confirmation for samples yielding positive results. The same LC separation is applied, replacing the UV detection with the mass spectrometer for confirmation of positive results.

Recoveries of M6316 in three different soil types were determined using the above method. The addition of H₂O to the sample enhances recovery of M6316. Optimum recovery of M6316 from each soil type was achieved at specific % moisture ranges. See Table 1 for % moisture content and % recovery data for each soil type. Average extraction recoveries for freshly fortified samples at the 100 ppt level in the various soils are as follows:

Organogenic: 87%

Sand: 87%

Clay: 88%

Aged samples will be examined in the future.

These values were obtained by extraction of radiolabeled C-14 compounds and liquid scintillation counting. For UV results, see Table 2.

Two questions routinely arise in trace level analyses: confirming the identity of the analyte and contamination of the sample. The method discusses both the extraction and chromatographic procedure as well as the possible sources of contamination involved in doing this analysis at the levels of detection required.

Contamination is an issue which requires the utmost in analytical technique and care to avoid. Again, at the levels in question, contamination is best avoided by conducting the extractions and sample preparation in a "clean lab". Also, weighing and fortifying the soil samples should take place in separate areas.

EXTRACTION AND SAMPLE PREPARATION

The extraction procedure is as follows:

1. weigh out 400 grams of soil.
2. divide into 50 gram portions into each of 8 - 200 mL glass centrifuge jars.
3. add a known aliquot of water to the soil to ensure a moisture content appropriate for the soil type (see Table 1).
4. add 50 mL of acetonitrile and 50 mL of methylene chloride to each 50 gram portion of soil.
5. homogenize with Tissumizer® for 2 minutes.
6. centrifuge for 5 minutes at 2000 RPMs.
7. decant and combine solvent from each jar into a 500 mL round bottom flask.
8. rotary evaporate to near dryness.
9. rinse the sides of the round bottom flask with methylene chloride thoroughly to concentrate extract at the bottom.
10. concentrate extract in the round bottom flask to a volume of 2 mL under a stream of nitrogen.
11. quantitatively transfer the extract to a 125 glass separatory funnel using two 5 mL portions of carbon tetrachloride to rinse the round bottom.
12. add 10 mL of 10 mM KH_2PO_4 buffer, pH adjusted to 7 with 80% NaOH, and shake vigorously for 2 minutes.
13. discard the organic layer.
14. collect the aqueous layer into a 50 mL centrifuge tube.
15. centrifuge the aqueous layer for 5 minutes at 2000 rpms.
16. inject the entire 10 mL into a 5 mL sample loop to adequately fill the loop. The sample is introduced via a glass syringe; a 0.45 μm PTFE filter is attached to the syringe to remove any particulates.

Total sample preparation time is approximately 2 hours, allowing daily sample throughput of 4 per technician.

LIQUID CHROMATOGRAPH AND ANALYSIS

The liquid chromatograph used in this method was a Hewlett Packard 1090M with photo-diode array detection. The ternary pumping system allowed the eluent switching and gradient elution programming required in this method. In addition, a separate pump was required for the eluent switching, as described in AMR-1241-88. The pumping system of the 1090M provides pulse free mobile phase delivery necessary for the low detection levels.

The chromatographic mobile phases used include 10 mM KH_2PO_4 aqueous buffer, pH adjusted to 7.5 with 80% sodium hydroxide, water, adjusted to pH 3 with 85% phosphoric acid, and methanol. The aqueous mobile phase pH adjustments are ± 0.1 pH units.

The eluent switching provided a much cleaner sample; when coupled with the column switching, UV detection at 230 nm easily detects 100 ppt M6316 extracted from 400 grams of soil. For a complete discussion of the theory and background of the eluent switching methodology, see Reference 1, Appendix 2, p.42. In essence, during the chromatography on this first column, the pH of the mobile phase is switched from the initial acidic aqueous phase to a basic aqueous buffer. Subsequently, the amount of organic modifier required for elution of the now ionic sulfonylurea is significantly reduced.

Three sequential injections of M6316 are made on the phenyl column using the eluent switching program to establish a stable retention time. The column switching valve is then timed to accurately introduce the compound of interest onto the second column, now in series with the first column. The valve is switched just prior to and after elution of each peak. See Figures 2-3 for a diagram of the valves, pumps and columns, as well as an example chromatogram demonstrating the times for switching the valve.

Since the sulfonylurea is eluting from the phenyl column with a basic aqueous mobile phase, addition of water pH adjusted to 1.5 (± 0.2 pH units with 85% phosphoric acid) is added at a rate of approximately 0.6 mL/min post phenyl column such that the resultant aqueous phase is approximately 2.2 pH units. This is well below the pK_a of the sulfonylurea ($\text{pK}_a \approx 3.5$). The now acidified aqueous phase is introduced onto the ODS column. The protonated sulfonylurea will not elute through the ODS column under these conditions.

After introduction of M6316 from the phenyl column onto the ODS column, the column switching valve is positioned such that the columns are no longer in series. Mobile phase strength is increased to remove any remaining impurities from the phenyl column. A second switching valve is then activated, diverting the flow of mobile phase only to the ODS column for analysis and UV detection.

Chromatographic conditions can be optimized to accommodate different background profiles found in various soil samples. Retention times on the phenyl and ODS columns are lengthened by decreasing the organic content of the mobile phase. Also, the retention time is related to the mobile phase pH; small changes in mobile phase pH result in small retention time differences and may help in resolution between M6316 and a closely eluting impurity.

SOIL SAMPLES AND STANDARDIZATION

Soil samples representing three different soil types were obtained from Sweden and analyzed with this method. The soils varied in pH, organic content and ionic content. Characterization data for each soil type can be found in Table 3. The chromatographic conditions which allowed separation and detection of M6316 in all three soil types are given in Table 4.

An example chromatogram of M6316 standard is given in Figure 4. Sand, clay and organogenic soil samples fortified at 100 ppt are given in Figures 5-7 with superimposed non-fortified samples. The UV profile of the non-fortified sample was clean in the area where M6316 eluted.

Extraction efficiencies were determined by extracted C-14 radiolabeled M6316 from the three soil types at several fortification levels. Liquid scintillation counting was used to determine the efficiencies. Results are given in Table 1.

Standard solutions of M6316 were made by introducing different aliquots of a 10 $\mu\text{g/mL}$ stock solution containing M6316 into 100 mL volumetric flasks and diluting to volume with 10% methanol/90% water. These solutions were used to construct an example calibration curve (see Figure 8). The dotted asymptotic line represents the 95% confidence values.

Reproducibility of the M6316 retention must be monitored by injecting a standard solution after every two sample injections. Due to the complexity of this separation, small changes in pump performance, pH of mobile phases or matrix effects will affect the sulfonylurea retention:

CLEAN LABORATORY PRACTICES

At the low levels detected in this method, cross contamination from various sources in the laboratory is a real problem. In order to minimize contamination and insure the integrity of the results, the following points are required:

1. DO NOT weigh M6316 in the laboratory where the sample preparation is to take place.
2. wash all glassware with reagent grade nitric acid, followed by rinses with hot water, distilled water, methanol and methylene chloride.
3. keep all glassware covered when possible.
4. use a separate Tissuemizer® probe to agitate the fortified samples and non-fortified samples.
5. use a very clean syringe to introduce the samples and standards into the LC; preferably, use a separate syringe for each type of sample.
6. make sure the 5 mL sample loop is very clean before introduction of next sample. Sulfonylureas have been known to adhere to stainless steel, thereby affecting the method reproducibility:

SUMMARY

Quantitation levels of 100 ppt M6316 (Harmony®) present in several Swedish soil samples were achieved with this method. Method recoveries were above 80% consistently for all soil types; extraction efficiencies were validated using C-14 radiolabeled M6316 and liquid scintillation counting.

APPARATUS AND REAGENTS

Liquid Chromatograph: a liquid chromatographic system with dual pumps, column oven and a 5 mL injection loop is needed. The system used for method development was a Hewlett Packard 1090M.

Detector: a variable wavelength UV detector is needed. The Hewlett Packard 1040A photo-diode array detector was used in this method.

Switching Valves: 6 port Rheodyne switching valves were installed and controlled via contact switches.

Columns: a Zorbax® phenyl column, 25 cm x 4.6 mm was the first column in the series. The second column was a Zorbax® ODS column, 15 cm x 4.6 mm.

Integrator/Recorder: the chromatographic data was collected and integrated on the 1090M data system. Chromatograms were recorded on a Hewlett Packard Think Jet printer.

ph meter: a Beckman Model 44 pH meter was used to measure pH of the aqueous mobile phase.

Tekmar® Tissumizer® and Shaft: Soil samples were homogenized with Tissumizer® and SDT182EN shaft.

Mobile Phase Water: Milli-Q® deionized, distilled water.

Phosphoric Acid: 85% solution, HPLC grade, Fisher Scientific, King of Prussia, PA.

Methanol: HPLC grade, EM Science, Cherry Hill, NJ.

Rotary Evaporator: Buchi Model 011 Rotavapor.

Filters: 0.45 µm Teflon filters, SM-256 for organic solvents, Bodman Chemical, Aston, PA.

Representative Soils: Organogenic, Clay and Sand obtained from Sweden.

Methylene Chloride: HPLC grade, EM Science, Cherry Hill, NJ.

Harmony®: DPX-M6316, analytical standard grade, Du Pont Agricultural Products
Department, Experimental Station, Wilmington, DE.

Carbon Tetrachloride: Reagent grade, EM Science, Cherry Hill, NJ.

Potassium Phosphate: Monobasic, KH_2PO_4 , J. T. Baker Scientific, Philipsburg, NJ.

Sodium Hydroxide: 50% solution (w/w), "Baker Analytized" Reagent Grade, J. T. Baker
Scientific, Philipsburg, NJ.

Acetonitrile: HPLC grade, EM Science, Cherry Hill, N.J.

ACKNOWLEDGEMENTS

The authors gratefully acknowledge the helpful discussions, information and technical assistance of the following people whose contributions made this method possible: J. R. Wheeler, J. H. Larochelle, L.J. Major, M. J. Sommers, L. Thornton and D. E. Walker.

REFERENCES

1. Analytical Method for the Quantitation of DPX-E9636 in Corn (Forage and Grain), Du Pont Report No. AMR-1241-88, J. H. Larochelle, L. J. Major and P. G. Rossi, May, 1989.

TABLE 1
SWEDISH SOIL EXTRACTION OF M6316 RADIOLABELED C-14 RESULTS

<u>Soil Type</u>	<u>Moisture Content</u>	<u>Fortification Level</u>	<u>Recovery</u>	
Sand	air dried	1 ppb	19%	
	18% (water added before spiking)	1 ppb	96%	
	18% (water added after spiking)	1 ppb	91%	
			} %RSD = 0.3	
Clay	18% (as received)	100 ppt	88%	
	36% (as received)	10 ppb	81%	
	36% (as received)	1 ppb	82%	
	36% (as received)	100 ppt	87%	
	16% (water added after spike)	1 ppb	69%	
	18% (water added after spike)	1 ppb	73%	
	20% (water added after spike)	1 ppb	70%	
	24% (water added after spike)	1 ppb	68%	
	40% (water added after spike)	1 ppb	80%	
	50% (water added after spike)	1 ppb	76%	
Organogenic	60% (water added after spike)	1 ppb	77%	
	air dried	1 ppb	64%	
	59% (as received)	1 ppb	70%	
				} %RSD = 0.7%
	59% (as received)	100 ppt	68%	
	79% (water added after spike)	1 ppb	73%	
	89% (water added after spike)	1 ppb	83%	
99% (water added after spike)	1 ppb	87%		

$$\% \text{ moisture} = \frac{\text{moist soil wt.} - \text{dry weight}}{\text{dry weight}} \times 100$$

TABLE 2
SWEDISH SOIL EXTRACTION OF M6316
UV RESULTS : 230 nm

<u>Soil Type</u>	<u>Fortification Level</u>	<u>Recovery</u>
Sand	5 ppb	84%
	1 ppb	99%
	1 ppb	103%
	1 ppb	97%
	100 ppt	80%
Clay	non-fortified	non-detected
	100 ppt	114.2%
	non-fortified	non-detected
Organogenic	100 ppt	78.0%
	100 ppt	79.6%
	100 ppt	115.3%
	non-fortified	non-detected

TABLE 3
SOIL CHARACTERIZATION DATA



Harris Laboratories Inc.
624 Peach Street, Box 80837, Lincoln, NE 68501

REPORT
OF
ANALYSIS

Sample Of	SOIL
-----------	------

Submitted By	E. I. DU PONT DE NEMOURS P.O. BOX 80402 SID GOLDBERG-AG WILMINGTON, DE 19880
--------------	---

Submitted For	FOR 1384-89 SWEDEN
---------------	-------------------------------

Date Received	Date Reported	Samples Will Be Stored Until	Laboratory No.
5-OCT-1989	31-OCT-1989	14-NOV-1989	9041855

REPORT OF ANALYTICAL RESULTS

Client Sample Identification	Analysis	Result
S00071582		
<u>CLAY</u>	% Sand	22.0
	% Clay	50.0
	% Silt	28.0
	Texture	CLAY
	Nitrogen, Total	0.31 %
	Avail. Salts (Saturation)	0.92 MMHOS/CM
	Magnesium	203 PPM
	Potassium	165 PPM
	Calcium	3293 PPM
	Bray 1 Phosphorous	37 PPM
	Organic Matter	2.8 %
	Moisture	26.19 %
	Cation Exchange Capacity	92.68 MEQ/100G
	Holding Cap. (1/3 Bar)	36.40 %
	Holding Cap. (15 Bar)	19.52 %
	pH	6.7
S00071581		
<u>SAND</u>	% Sand	81.6
	% Clay	10.0
	% Silt	8.4
	Texture	LOAMY SAND
	Nitrogen, Total	0.11 %
	Avail. Salts (Saturation)	1.90 MMHOS/CM
	Magnesium	69 PPM
	Potassium	158 PPM
	Calcium	1329 PPM
	Bray 1 Phosphorous	124 PPM
	Organic Matter	1.3 %
	Moisture	1.33 %
	Cation Exchange Capacity	10.01 MEQ/100G
	Holding Cap. (1/3 Bar)	7.09 %
	Holding Cap. (15 Bar)	3.13 %
	pH	INSUFF. SAMPLE
S00071583		
<u>ORGANOGENIC</u>	% Sand	50.4
	% Clay	11.6
	% Silt	38.0
	Texture	LOAM
	Nitrogen, Total	1.34 %
	Avail. Salts (Saturation)	3.60 MMHOS/CM
	Magnesium	153 PPM
	Potassium	105 PPM
	Calcium	1814 PPM
	Bray 1 Phosphorous	29 PPM
	Organic Matter	7.9 %
	Moisture	38.23 %
	Cation Exchange Capacity	116.85 MEQ/100G
	Holding Cap. (1/3 Bar)	73.74 %
	Holding Cap. (15 Bar)	35.59 %

TABLE 4
LIQUID CHROMATOGRAPH INITIAL PARAMETERS

Flow:	1.400 mL/min.	Stop Time:	65.00 min.
Solvent A:	95.0% pH 3. H ₂ O	Post Time:	0.00 min.
B:	0.0% pH 7.5 10mMKH ₂ PO ₄	Injection Volume:	0.0 µL
C:	5.0% MEOH	Min. Pressure:	off
Oven Temperature:	40.0°C	Column Switch :	0
Max Pressure:	400 bar	Contacts:	0000
		Slowdown:	2

LIQUID CHROMATOGRAPH TIMETABLE

Time (min.)						
0.01	Solvent	A:	95.0	B:	0.0%	C: 5.0%
0.02	Contact	1:	on			
7.00	Contact	1:	off			
7.01	Solvent	A:	95.0%	B:	0.0%	C: 5.0%
7.02	Solvent	A:	45.0%	B:	0.0%	C: 55.0%
16.90	Solvent	A:	45.0%	B:	0.0%	C: 55.0%
17.00	Solvent	A:	0.0%	B:	80.0%	C: 20.0%
23.50	Flow		1.400			
			mL/min.			
23.60	Flow		1.000			
			mL/min.			
24.00	Column		1			
29.00	Column		0			
29.10	Flow		1.000			
			mL/min.			
29.20	Flow		1.400			
			mL/min.			
29.20	Solvent	A:	0.0%	B:	80.0%	C: 20.0%
30.00	Solvent	A:	20.0%	B:	0.0%	C: 80.0%
35.00	Solvent	A:	20.0%	B:	0.0%	C: 40.0%
40.00	Solvent	A:	60.0%	B:	0.0%	C: 40.0%
42.00	Contact	2:	on			

TABLE 4 (Cont'd.)

LIQUID CHROMATOGRAPH INITIAL PARAMETERS

Flow:	1.400 mL/min.	Stop Time:	65.00 min.
Solvent A:	95.0% pH 3. H ₂ O	Post Time:	0.00 min.
B:	0.0% pH 7.5 10mMKH ₂ PO ₄	Injection Volume:	0.0 µL
C:	5.0% MEOH	Min. Pressure:	off
Oven Temperature:	40.0°C	Column Switch :	0
Max Pressure:	400 bar	Contacts:	0000
		Slowdown:	2

LIQUID CHROMATOGRAPH TIMETABLE

65.00	Contact	2:	off			
65.10	Solvent	A:	60.0%	B:	0.0%	C: 40.0%
70.20	Solvent	A:	95.0%	B:	0.0%	C: 5.0%

Figure 1

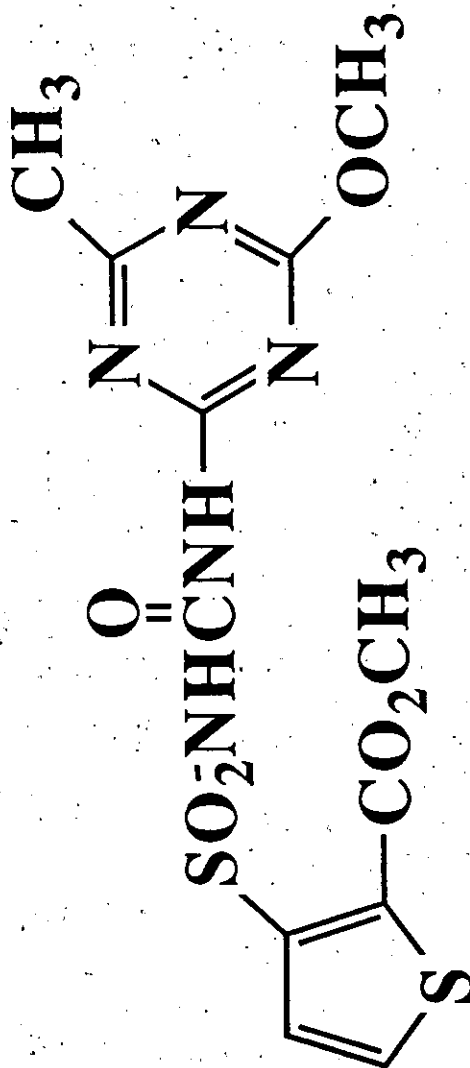
Structure of Harmony**Harmony®**

Figure 2
Valving for Column and Eluent Switching

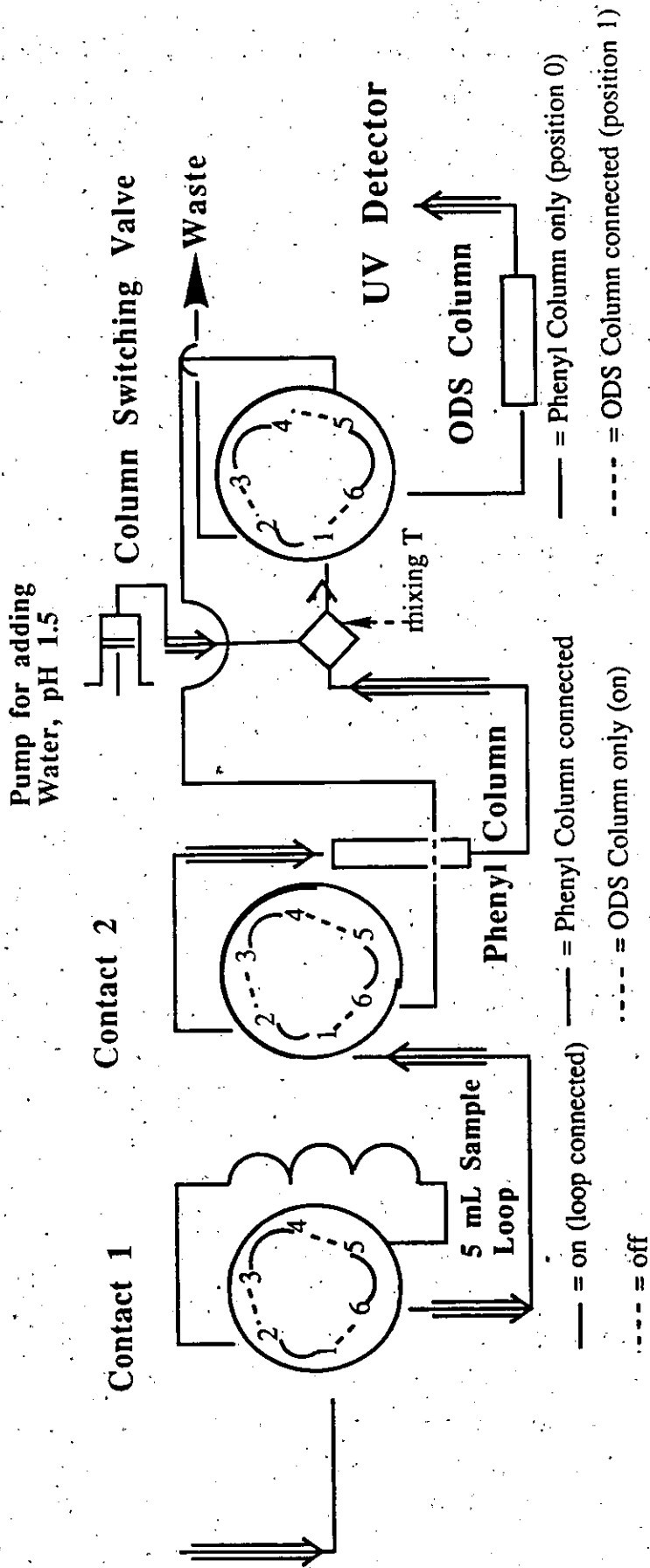


FIGURE 3

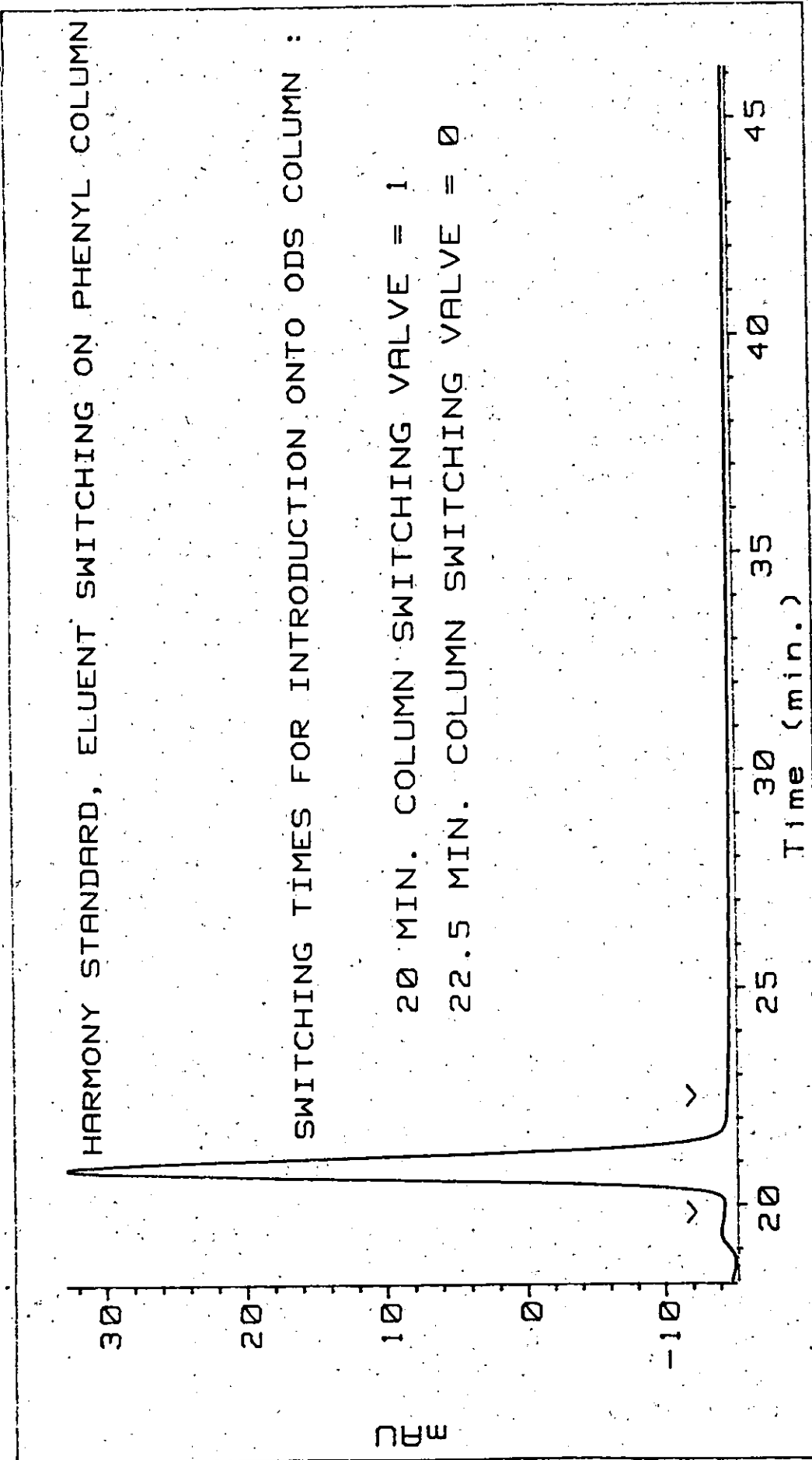


FIGURE 4

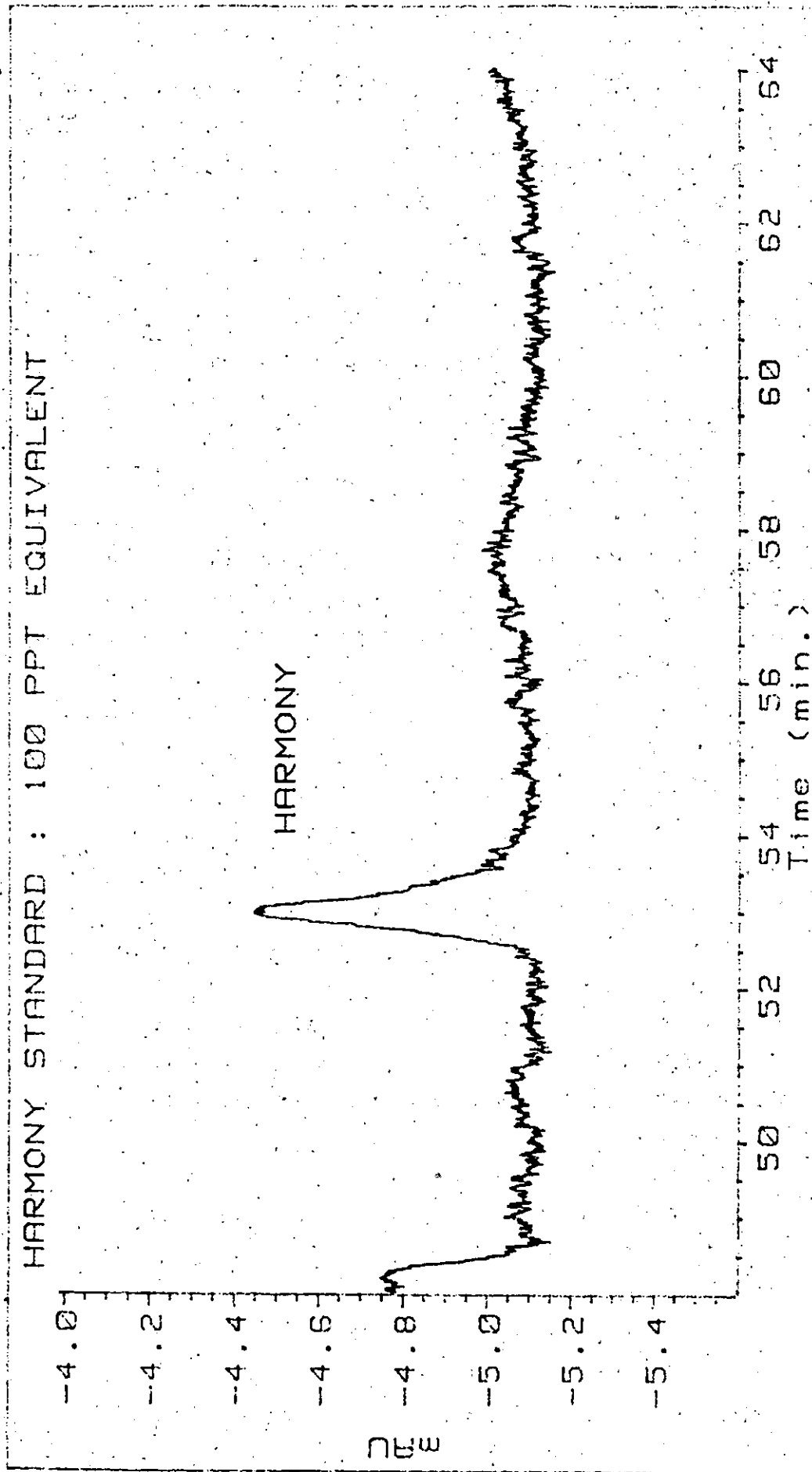


FIGURE 5

HARMONY EXTRACTED FROM SWEDISH SAND : 100 PPT

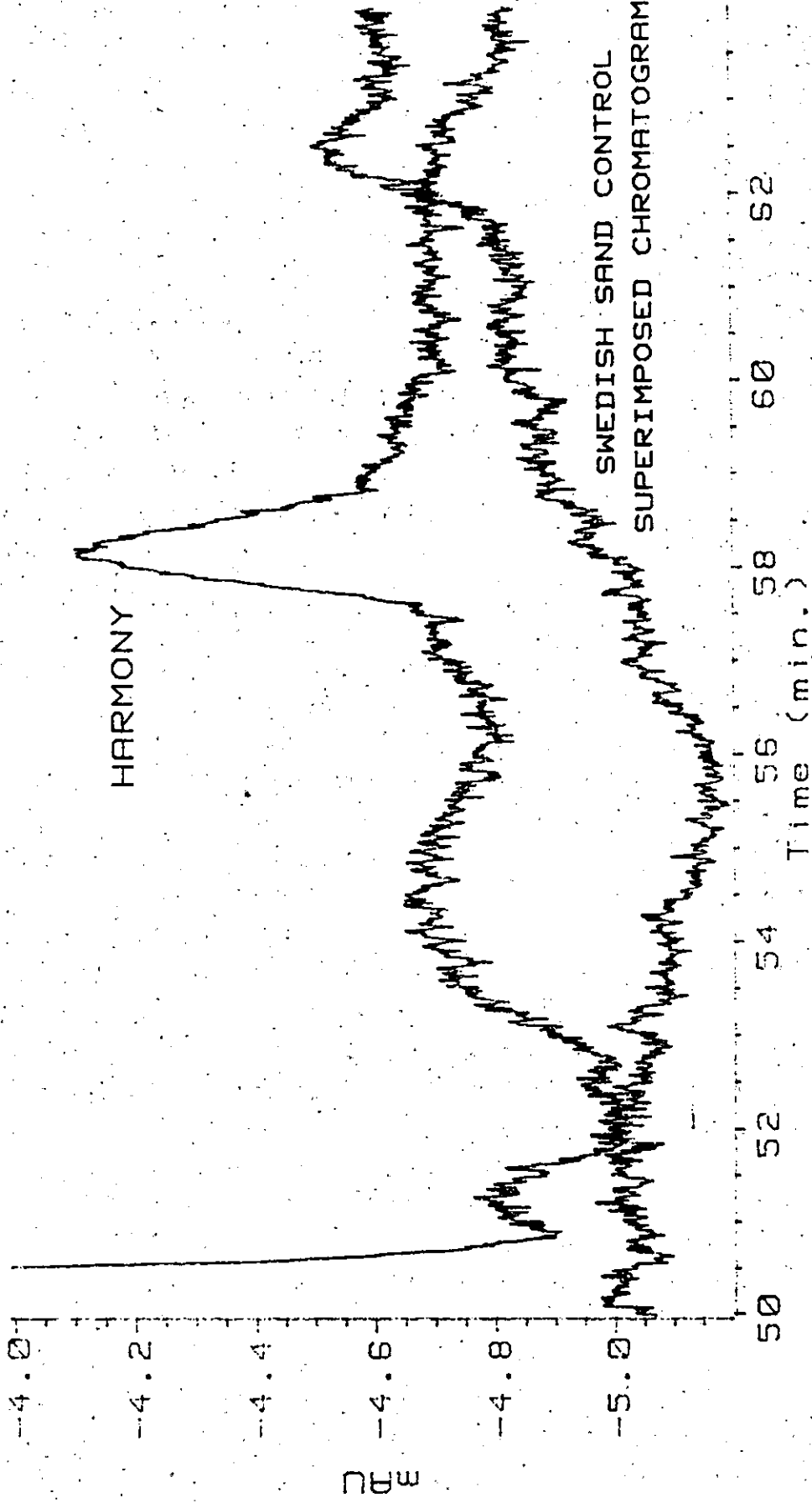


FIGURE 6

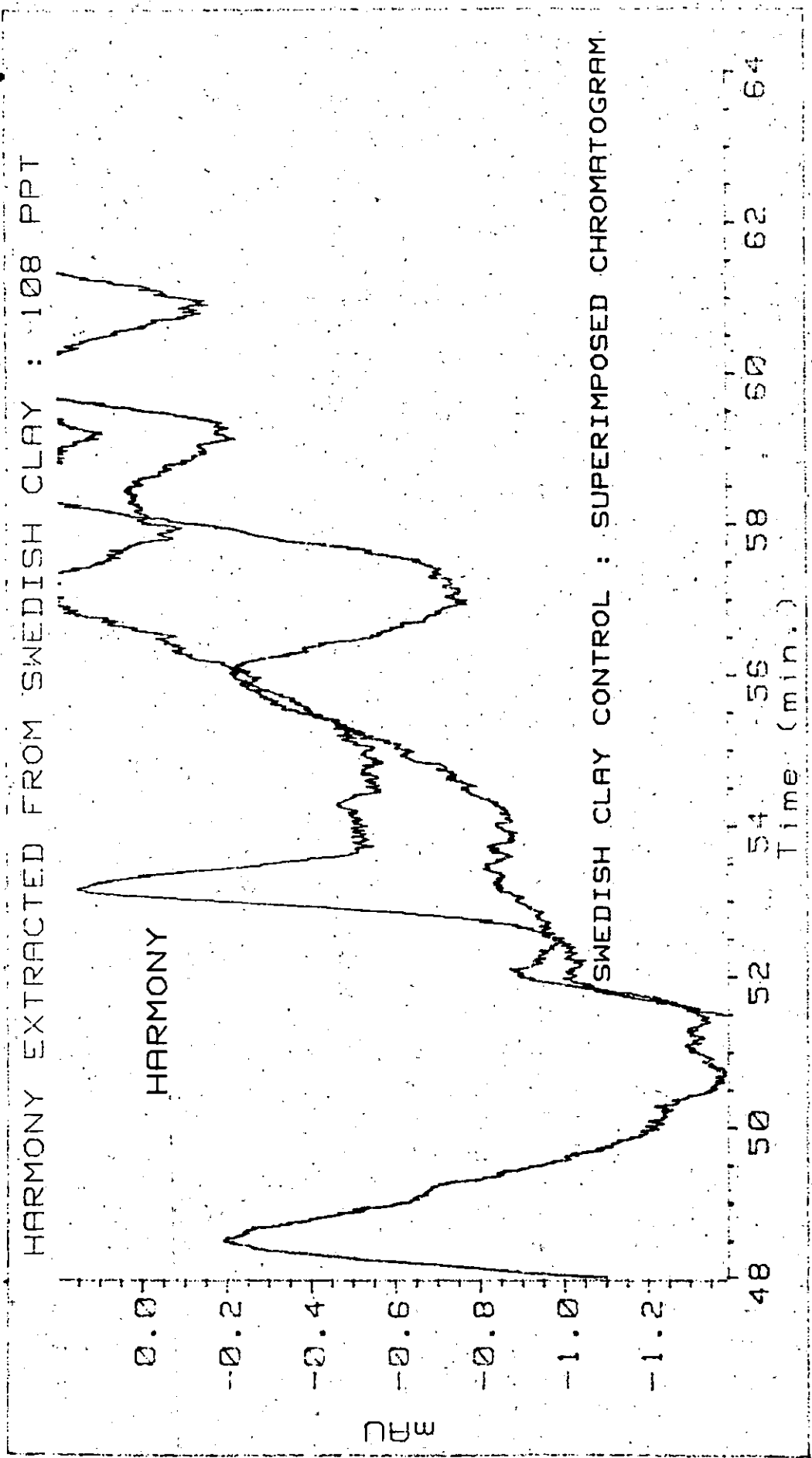


FIGURE 7

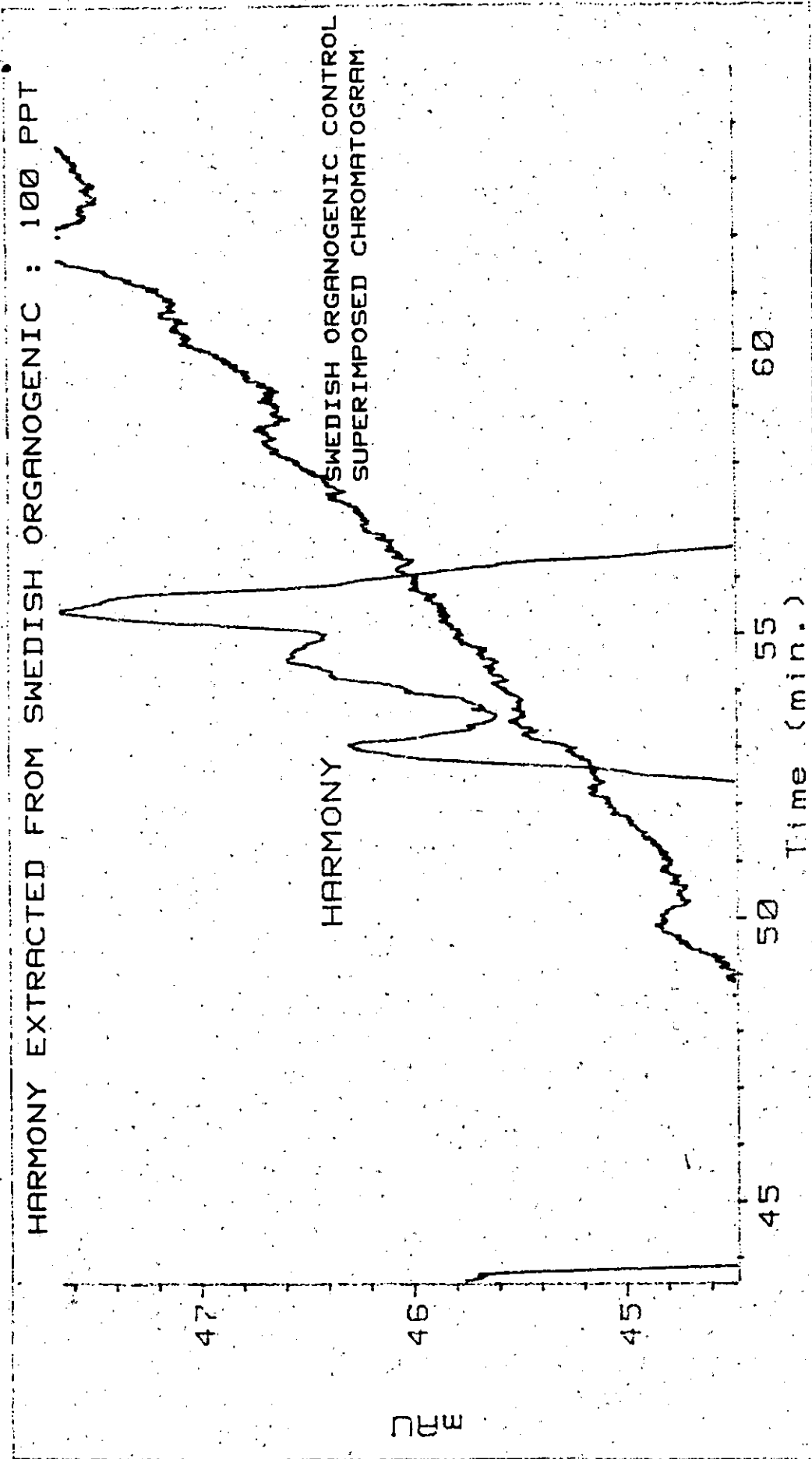


FIGURE 8

STANDARD CALIBRATION CURVE FOR HARMONY

