

Cover Sheet for

ENVIRONMENTAL CHEMISTRY METHOD

Pesticide Name: Isoxaflutole

MRID #: 448305-03

Matrix: Soil

Analysis: LC/MS/MS

This method is provided to you by the Environmental Protection Agency's (EPA) Environmental Chemistry Laboratory (ECL). This method *is not* an EPA method but one which was submitted to EPA by the pesticide manufacturer to support product registration. EPA recognizes that the methods may be of some utility to state, tribal, and local authorities, but makes no claim of validity by posting these methods. Although the Agency reviews *all* Environmental Chemistry Methods submitted in support of pesticide registration, the ECL evaluates only about 30% of the currently available methods. Most methods perform satisfactorily but some, particularly the older methods, have deficiencies. Moreover, the print quality of the methods varies considerably because the methods originate from different sources. Therefore, the methods offered represent the best available copies.

If you have difficulties in downloading the method, or further questions concerning the methods, you may contact Elizabeth Flynt at 228-688-2410 or via e-mail at flynt.elizabeth@epa.gov.

RHÔNE-POULENC AG COMPANY

RTP, NC

**Method of Analysis for Isoxaflutole
and Its Metabolites in Soil**

Environmental Chemistry

February 26, 1999

Author:




Steve Cook

3/1/99

Date

Approval:



Dean Bushey
Technical Manager

3/3/99

Date

Table of Contents

Introduction	3
A. Scope	3
B. Principle	3
C. Method Limits	3
D. Structures	4
Materials	4
A. Reagent/Solvents	4
B. Equipment and Supplies	5
C. Solvent	6
D. Analytical Standards	7
Standard Preparation	8
A. Fortification Standards	9
B. ¹³ C ₆ Labeled Internal Standards	10
C. Calibration Standard	11
D. Stability	12
Method Procedure	12
LC-MS-MS	13
A. Conditions	13
B. Performance Criteria	14
Calculations	15
Safety	16
References	16
Example Chromatograms	17
A. Calibration Data	17
B. Sample Data	26

Method of Analysis for Isoxaflutole and Its Metabolites in Soil

I. INTRODUCTION

A. Scope

This method describes the procedure for determining the residues of isoxaflutole and its metabolites, RPA 202248 and RPA 203328, in soil.

B. Principle

Residues of isoxaflutole, RPA 202248 and RPA 203328 are extracted from soil by shaking the sample in an acetonitrile: 0.8% formic acid solution for fifteen minutes. The mixture is centrifuged and the supernatant is diluted to the desired concentration for analysis by LC/MS/MS using a C₈ HPLC column.

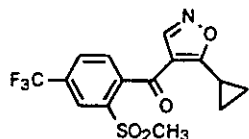
Quantification of results is based on internal standard area ratios for each analyte. The ¹³C isotopically labeled internal standard differs from the ¹²C analytes by six mass units.

C. Method Limits

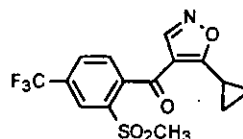
The method detection limit (MDL) and limit of quantification (LOQ) for isoxaflutole, RPA 202248 and RPA 203328 in soil will be established for this method during validation.

D. Chemical Structures

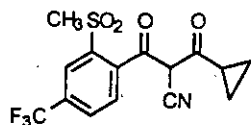
RPA 201772 (¹²C)
m.w. 359.35



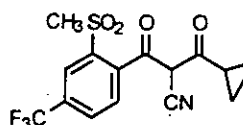
RPA 201772 (¹³C6)
m.w. 365.35



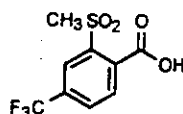
RPA 202248 (¹²C)
m.w. 359.3



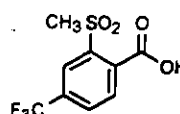
RPA 202248 (¹³C6)
m.w. 365.3



RPA 203328 (¹²C)
m.w. 268.21



RPA 203328 (¹³C6)
m.w. 274.21

**II. MATERIALS**

Unless otherwise noted, equivalent brands and/or suppliers can be used.

A. Reagents/Solvents

Acetic Acid GR

(EM Science, Cat. No. AX0073-13)

Acetonitrile Omni-Solv[®]

(EM Science, Cat. No. AX0142-1)

Rhone-Poulenc Ag Company
Study No. EC-99-453 File No. 45750

Formic Acid Suprapur (EM Science, Cat. No. 11670-1)

Water (HPLC grade) (VWR WX004-1)

Calibration Buffer Solutions pH 4.0 and 7.0
(Orion, Cat. No. 910104 and 910107)

B. Equipment and Supplies

All re-usable glassware should be baked in a muffle oven at ~450 °C for at least 2 hours to remove any possible contamination before use.

Balance :

accuracy \pm 0.1 mg (for weighing analytical standards)(Mettler AE 200)

accuracy \pm 0.1 g (for weighing samples and chemicals)(Mettler PC 4000)

Bottles, amber, 4 oz. (Qorpak)

Spatula

Disposable pipettes

Graduated cylinders

Column, HPLC, Columbus C8, 50 mm x 2.0 mm id, 5 μ m
(Phenomenex, Cat. No. 00D-4187-E0, *no substitute*)

Mechanical Shaker

Nalgene PP 125 mL and 250 mL wide mouth bottles
(VWR # 2105-0004 and 2105-0008)

Magnetic stirrer and stir bar

Centrifuge (2500 rpm capacity)

Acrodisc CR PTFE syringe filters (0.2 μ m)

Pipette bulb

Precolumn HPLC Filter, Ultra Low Dead Volume, 0.5 μ m frit

Rhone-Poulenc Ag Company
Study No. EC-99-453 File No. 45750

(Upchurch, A-318)

Solvent jugs, 4 L brown glass

Volumetric flasks (Class A)

Volumetric pipettes (Class A)

pH meter

Eppendorf pipettors

16 X 100 mm disposable culture tubes (VWR # 60825-425)

Vial, clear, 1.5 mL; cap, open top; septa, split
(Sun, 200-250; 200-292, 500-870)**C. Solutions**

The following is a list of the solutions used in the analysis of soil. Example procedures for the preparation of each solution are also provided. *Note that the reagent water used in the preparations should be HPLC grade.*

1. Solution of ~0.8% Formic Acid in Water, pH 2.1

Calibrate pH meter prior to preparing the solution. Place a 4 L brown glass jug on a stir plate and add stir bar. Fill jug with ~4.0 L of H₂O. Add ~28 mL of formic acid. Put the pH meter probe into the water and measure the pH of the water while it is stirring. Using a disposable pipette, add formic acid drop-wise until a pH of 2.10 ± 0.05 is reached.

2. 80:20 Solution of Acetonitrile:~0.8% Formic Acid in Water, pH 2.1

Using graduated cylinders, combine 200 mL of ~0.8% formic acid (solution 1) and 800 mL of acetonitrile in a 4 L brown glass solvent jug that is clean and dry or a jug which was previously used for this solution. Repeat until the desired quantity has been made.

3. 90:10 Solution of ~0.8% Formic Acid in Water, pH 2.1:Acetonitrile

Rhone-Poulenc Ag Company
Study No. EC-99-453 File No. 45750

Using graduated cylinders, combine 900 mL of ~0.8% formic acid (solution 1) and 100 mL of acetonitrile in a 4 L brown glass solvent jug that is clean and dry or a jug which was previously used for this solution. Repeat until the desired quantity has been made.

4. Solution of ~1.5% Acetic Acid in Water

Pour ~950 mL of water into a 1 L graduated cylinder. Using a volumetric pipette, add 15 mL of acetic acid. Make up to 1 liter with water. Transfer to a 4 L brown glass jug. Mix by shaking. Repeat until the desired quantity has been made.

D. Analytical Standards

1. Common name/alias: Isoxaflutole, RPA 201772

4-(2-methanesulphonyl-4-trifluoromethylbenzoyl)-5-cyclopropylisoxazole

Chemical name: Methanone, (5-cyclopropyl-4-isoxazolyl)
[2-(methylsulfonyl)-4-(trifluoromethyl)phenyl]
(CAS No. 141112-29-0)

Solubility ¹ :	acetone:	29.3(g/100ml)
	acetonitrile:	23.3
	hexane:	0.010
	methanol:	1.38
	drinking water (pH 5.5):	0.00062

2. Common name/alias: Isoxaflutole, RPA 201772 (¹³C₆) labeled

4-(2-methanesulphonyl-4-trifluoromethylbenzoyl-¹³C₆)-5-cyclopropylisoxazole

Chemical name: Methanone, (5-cyclopropyl-4-isoxazolyl)
[2-(methylsulfonyl)-4-(trifluoromethyl)phenyl-¹³C₆]

3. Common name/alias: RPA 202248

2-cyano-3-cyclopropyl-1-(2-methylsulphonyl-4-trifluoromethylphenyl)-propan-1,3-dione

Chemical name: Benzenepropanenitrile, α-(cyclopropylcarbonyl)

Rhone-Poulenc Ag Company
Study No. EC-99-453 File No. 45750

-2-(methylsulfonyl) β -oxo-4-(trifluoromethyl)
(CAS No. 143701-75-1)

4. Common name/alias: RPA 202248 ($^{13}\text{C}_6$) labeled
2-cyano-3-cyclopropyl-1-(2-methylsulphonyl-4-trifluoromethylphenyl- $^{13}\text{C}_6$)-propan-1,3-dione

Chemical name: Benzene- $^{13}\text{C}_6$ -propanenitrile, α -(cyclopropylcarbonyl)-2-(methylsulfonyl) β -oxo-4-(trifluoromethyl)

5. Common name/alias: RPA 203328
2-methanesulphonyl-4-trifluoromethylbenzoic acid

Chemical name: Benzoic acid, 2-(methylsulfonyl)-4-(trifluoromethyl)
(CAS No. 142994-06-7)

6. Common name/alias: RPA 203328 ($^{13}\text{C}_6$) labeled
2-methanesulphonyl-4-trifluoromethylbenzoic acid- $^{13}\text{C}_6$

Chemical name: Benzoic acid- $^{13}\text{C}_6$, 2-(methylsulfonyl)-4-(trifluoromethyl)

III. FORTIFICATION AND CALIBRATION STANDARD SOLUTIONS PREPARATION

All the standard solutions must be stored in amber glass bottles at or below 10°C when not in use. Solutions should be allowed to warm to room temperature prior to use. The following is an example of a procedure to follow in preparing standard solutions. Alternate or additional standards of appropriate weight and volume may be prepared as needed.

All re-useable glassware should be baked in a muffle oven at ~450°C for at least 2 hours to remove any possible contamination before use.

From this point on, the term **fortification** standard will refer to the ^{12}C compound.

From this point on, the term **internal standard** will refer to the ^{13}C compound.

A. Fortification Standards

1. Weigh ~0.1000 g (corrected for purity) each of isoxaflutole, RPA 202248 and RPA 203328 into separate 100-mL volumetric flasks and dilute to the marks with acetonitrile. Cap and mix by inversion. The concentration of these stock standards is ~1000 $\mu\text{g/mL}$.
2. Transfer 10 mL each of the ~1000 $\mu\text{g/mL}$ of isoxaflutole, RPA 202248 and RPA 203328, via volumetric class "A" pipettes; to one 100 mL volumetric flask. Dilute to mark with a 90:10 solution of ~0.8% formic acid in water: acetonitrile, pH 2.1. Cap and mix by inversion. The concentration of this mixed standard is ~100 $\mu\text{g/mL}$ RPA 203328, isoxaflutole and RPA 202248.
3. Using a class "A" volumetric pipette, transfer 1 mL of the mixed standard (step III.A.2.) to a 100-mL volumetric flask. Dilute to mark with a 90:10 solution of ~0.8% formic acid in water: acetonitrile, pH 2.1. Cap and mix by inversion. The concentration of this mixed standard is ~1 $\mu\text{g/mL}$ RPA 203328, isoxaflutole and RPA 202248.
4. Using a class "A" volumetric pipette, transfer 10 mL of the mixed standard (step III.A.3.) to a 100-mL volumetric flask. Dilute to mark with a 90:10 solution of ~0.8% formic acid in water: acetonitrile, pH 2.1. Cap and mix by inversion. The concentration of this mixed standard is ~0.1 $\mu\text{g/mL}$ RPA 203328, isoxaflutole and RPA 202248.
5. Using a class "A" volumetric pipette, transfer 10 mL of the mixed standard (step III.A.4.) to a 100-mL volumetric flask. Dilute to mark with a 90:10 solution of ~0.8% formic acid in water: acetonitrile, pH 2.1. Cap and mix by inversion. The concentration of this mixed standard is ~10 ng/mL RPA 203328, isoxaflutole and RPA 202248.
6. Using a class "A" volumetric pipette, transfer 10 mL of the mixed standard (step III.A.5.) to a 100-mL volumetric flask. Dilute to mark with a 90:10 solution of ~0.8% formic acid in water: acetonitrile, pH 2.1. Cap and mix by inversion. The concentration of this mixed standard is ~1 ng/mL RPA 203328, isoxaflutole and RPA 202248.

B. $^{13}\text{C}_6$ Labeled Internal Standards

1. Weigh ~ 0.0100 g (corrected for purity) each of $^{13}\text{C}_6$ isoxaflutole, $^{13}\text{C}_6$ RPA 202248 and $^{13}\text{C}_6$ RPA 203328 into separate 100-mL volumetric flasks and dilute to the marks with acetonitrile. Cap and mix by inversion. The concentration of these stock standards is ~ 100 $\mu\text{g/mL}$.
2. Transfer 10 mL each of the ~ 100 $\mu\text{g/mL}$ of $^{13}\text{C}_6$ isoxaflutole, $^{13}\text{C}_6$ RPA 202248 and $^{13}\text{C}_6$ RPA 203328, via volumetric class "A" pipettes, to one 100 mL volumetric flask. Dilute to mark with a 90:10 solution of $\sim 0.8\%$ formic acid in water: acetonitrile, pH 2.1. Cap and mix by inversion. The concentration of this mixed standard is ~ 10 $\mu\text{g/mL}$ $^{13}\text{C}_6$ RPA 203328, $^{13}\text{C}_6$ isoxaflutole and $^{13}\text{C}_6$ RPA 202248.
3. Using a class "A" volumetric pipette, transfer 10 mL of the mixed standard (step III.B.2.) to a 100-mL volumetric flask. Dilute to mark with a 90:10 solution of $\sim 0.8\%$ formic acid in water: acetonitrile, pH 2.1. Cap and mix by inversion. The concentration of this mixed standard is ~ 1 $\mu\text{g/mL}$ $^{13}\text{C}_6$ RPA 203328, $^{13}\text{C}_6$ isoxaflutole and $^{13}\text{C}_6$ RPA 202248.
4. Using a class "A" volumetric pipette, transfer 10 mL of the mixed standard (step III.B.3.) to a 100-mL volumetric flask. Dilute to mark with a 90:10 solution of $\sim 0.8\%$ formic acid in water: acetonitrile, pH 2.1. Cap and mix by inversion. The concentration of this mixed standard is ~ 0.1 $\mu\text{g/mL}$ $^{13}\text{C}_6$ RPA 203328, $^{13}\text{C}_6$ isoxaflutole and $^{13}\text{C}_6$ RPA 202248.
5. Using a class "A" volumetric pipette, transfer 10 mL of the mixed standard (step III.B.4.) to a 100-mL volumetric flask. Dilute to mark with a 90:10 solution of $\sim 0.8\%$ formic acid in water: acetonitrile, pH 2.1. Cap and mix by inversion. The concentration of this mixed standard is ~ 10 ng/mL $^{13}\text{C}_6$ RPA 203328, $^{13}\text{C}_6$ isoxaflutole and $^{13}\text{C}_6$ RPA 202248.
6. Using a class "A" volumetric pipette, transfer 10 mL of the mixed standard (step III.B.5.) to a 100-mL volumetric flask. Dilute to mark with a 90:10 solution of $\sim 0.8\%$ formic acid in water: acetonitrile, pH 2.1. Cap and mix by inversion. The concentration of this mixed standard is ~ 1 ng/mL $^{13}\text{C}_6$ RPA 203328, $^{13}\text{C}_6$ isoxaflutole and $^{13}\text{C}_6$ RPA 202248.

C. Calibration Standards

1. ~0.1 ng/mL Mixed ^{12}C Std with 0.1 ng/mL Mixed ^{13}C Internal Std
Using a class "A" volumetric pipette, transfer 10 mL of the ~1.0 ng/mL mixed **internal** standard (step III.B.6.) and 10 mL of the ~1.0 ng/mL mixed **fortification** standard (step III.A.6.) to a 100-mL volumetric flask. Dilute to mark with a 90:10 solution of ~0.8% formic acid in water: acetonitrile, pH 2.1. Cap and mix by inversion.
2. ~0.08 ng/mL Mixed ^{12}C Std with 0.1 ng/mL Mixed ^{13}C Internal Std
Using a class "A" volumetric pipette, transfer 10 mL of the ~1.0 ng/mL mixed **internal** standard (step III.B.6.) and 8 mL of the ~1.0 ng/mL mixed **fortification** standard (step III.A.6.) to a 100-mL volumetric flask. Dilute to mark with a 90:10 solution of ~0.8% formic acid in water: acetonitrile, pH 2.1. Cap and mix by inversion.
3. ~0.05 ng/mL Mixed ^{12}C Std with 0.1 ng/mL Mixed ^{13}C Internal Std
Using a class "A" volumetric pipette, transfer 10 mL of the ~1.0 ng/mL mixed **internal** standard (step III.B.6.) and 5 mL of the ~1.0 ng/mL mixed **fortification** standard (step III.A.6.) to a 100-mL volumetric flask. Dilute to mark with a 90:10 solution of ~0.8% formic acid in water: acetonitrile, pH 2.1. Cap and mix by inversion.
4. ~0.02 ng/mL Mixed ^{12}C Std with 0.1 ng/mL Mixed ^{13}C Internal Std
Using a class "A" volumetric pipette, transfer 10 mL of the ~1.0 ng/mL mixed **internal** standard (step III.B.6.) and 2 mL of the ~1.0 ng/mL mixed **fortification** standard (step III.A.6.) to a 100-mL volumetric flask. Dilute to mark with a 90:10 solution of ~0.8% formic acid in water: acetonitrile, pH 2.1. Cap and mix by inversion.
5. ~0.01 ng/mL Mixed ^{12}C Std with 0.1 ng/mL Mixed ^{13}C Internal Std
Using a class "A" volumetric pipette, transfer 10 mL of the ~1.0 ng/mL mixed **internal** standard (step III.B.6.) and 1 mL of the ~1.0 ng/mL mixed **fortification** standard (step III.A.6.) to a 100-mL volumetric flask. Dilute to mark with a 90:10 solution of ~0.8% formic acid in water: acetonitrile, pH 2.1. Cap and mix by inversion.

D. Stability

1. To evaluate the stability, the following formula has been used :

$$\text{percent stability} = [1 - (\text{old std. soln.} / \text{new std. soln.})] \times 100$$

The old standard solution should give detector responses within 10% of those of the new standard solution in order for the given standard solution to be considered stable under the storage conditions.

2. Stock solutions: Each product prepared in acetonitrile and stored at $4^{\circ}\text{C} \pm 3^{\circ}\text{C}$ was stable for up to 5.5 months².
3. 100 $\mu\text{g/L}$ standard solutions: A solution of isoxaflutole , RPA 202248, and RPA 203328 prepared in 80:20 water: acetonitrile was stable for up to 5.5 months²⁻⁴.
4. 100 $\mu\text{g/L}$ standard solutions: A solution of isoxaflutole , RPA 202248, and RPA 203328 prepared in 90:10 ~0.8% formic acid: acetonitrile (pH 2.1) was stable for at least one month.

IV. METHOD PROCEDURES

A. Extraction and Clean-up

- A1. Weigh 50 g (+/-0.1g) of sample into a 125 mL Nalgene[®] bottle. The sample may be stored in a freezer until needed.
- A2. For recoveries, fortify the sample with the appropriate ¹²C and ¹³C standard solutions to the desired concentration. Mix the soil to disperse the analytes and allow the samples to equilibrate at room temperature for 15-30 minutes.
- A3. For UTC and Unknown samples, fortify the sample, with the appropriate ¹³C standard solution, to the desired concentration. Mix the soil to disperse the analytes and allow the samples to equilibrate at room temperature for 15-30 minutes.
- A4. Add ~75 mL of 80:20 acetonitrile: 0.8% formic acid and mix on a mechanical shaker for ~15 minutes.
- A5. Centrifuge the shaken sample at ~2500 rpm for ~ five minutes.

Rhone-Poulenc Ag Company
Study No. EC-99-453 File No. 45750

- A6. Decant the supernatant into a 250 mL Nalgene bottle.
- A7. Repeat steps A4-A6 one more time. *Note: Disperse the pellet prior to the second mechanical mixing.* Combine the two supernatants and mix.
- A8. Remove 2 mL of the extract and combine it with 4 mL of the 0.8% formic acid solution and mix. *Note: The organic to aqueous ratio for the final solution will be ~26:74. It was determined that peak shape begins to deteriorate as the organic ratio rises about 30 %.*
- A9. Filter the diluted solution through a syringe filter into an HPLC vial after sending the first ~0.5-1 mL to waste.
- A10. Sample is ready for LC/MS/MS analysis.

V. HIGH PERFORMANCE LIQUID CHROMATOGRAPHY-MASS SPECTROMETRY (LC-MS)

A. Conditions

Instrument used: Perkin Elmer Sciex API 3000 LC/MS/MS System
PE Sciex Turbo Ion Spray Electrospray Interface.
Shimadzu LC-10AD VP HPLC Pumps (2) with
250 μ L High Pressure Mixer and SCL-10A VP
Pump Controller
Perkin Elmer Series 200 Autosampler

Ionization and MS Mode: Electrospray (TurboIonSpray) - negative ion mode
MS/MS with multiple reaction monitoring (MRM)

IonSpray / Orifice Voltage: -4800V / -59V

Nebulizer Setting: 15 (Air)

Curtain Gas Setting: 9 (Nitrogen)

Turbo IonSpray Settings: Heated air at ~8.5 L/min, 500°C

Collision Gas Setting: 8 (Nitrogen)

Collision Energy (R02-Q0): (36-10)V = 26V
 (See data for complete list of instrument dependent state file parameters)

Mass Transitions (Dwell times in milli seconds):

Period 1:

RPA203328: 267/159 (375 ms)
¹³C₆ RPA203328: 273/165 (275)

Period 2:

RPA202248 and IFT: 358/79 (375)
¹³C₆ RPA202248 and IFT: 364/79 (275)

Column: Phenomenex, Columbus C8, 2.0 x 50 mm,
 5µm particle size, 100A pore size

Mobile phase flow rate: 0.400 mL/min no split

Mobile phase: 48% Acetonitrile / 52% (1.5% Acetic acid in HPLC water)

Injection volume: 50 µL

Retention times: See chromatograms and data reports

Note the indicated LC-MS-MS parameters are guidelines and should be optimized for the instrument and column actually used. Instrument parameters and mobile phase compositions may be adjusted to improve separation from interfering peaks.

APPROXIMATE RETENTION TIMES

RPA 203328	1.15 minutes
RPA 201772	2.25 minutes
RPA 202248	3.40 minutes

Retention times may vary from those presented above.

B. Performance Criteria

First criterion:

Run a standard solution corresponding to a level at or below the estimated LOQ and obtain a signal to noise ratio of at least 9:1.

Rhone-Poulenc Ag Company
 Study No. EC-99-453 File No. 45750

If this criterion can not be met, optimize instrument operating parameters or change instrument method parameters such as split ratio or injection size until a signal to noise ratio of 9:1 is obtained.

If this criterion still can not be met by changing operating parameters, run higher level standards until a signal to noise ratio of 9:1 is obtained. This will require adjusting the method final sample dilution such that this standard level corresponds to the required LOQ.

Second criterion:

Run a set of standards of four or more concentration levels, from at or below the LOQ, up to the highest concentration level to be included in the analysis. Generate a calibration curve for each analyte and obtain a linear regression with a correlation coefficient of at least 0.90 for each analyte. If this criterion is met, the samples may be run with standards interspersed. Do not use any sample run data if the combined regression for standards run immediately before, during and after the samples do not meet this criterion.

Note:

To stabilize the response of the instrument, it has been found useful to run at least one standard and three or more sample or untreated control solutions as "wake up" runs before the actual runs to be used in calculations are commenced.

VI. CALCULATIONS

Linear regression should be used to generate calibration curves for RPA 201772, RPA 202248, and RPA 203328. The regression will be plotted as concentration vs. area ratio for each standard level. The area ratio is calculated by dividing the area of the ^{12}C analyte by the area of the corresponding ^{13}C internal standard analyte. After the instrument performance criteria are met, a minimum of four standards over a range of concentration levels should be included with a set of samples. Standards should be interspersed with samples to compensate for any minor change in instrument response. Samples should be diluted such that any ^{12}C peak areas or heights are within the area or height range between the lowest and highest ^{12}C standards injected.

Linear regression coefficients should be calculated on standard concentration (ng/mL) versus peak area or height. The data from the analytical standards should then be fit to the linear model.

Rhone-Poulenc Ag Company

Study No. EC-99-453 File No. 45750

$$Y = A + BX.$$

The equation to be used to determine the residues in the samples is:

$$E = \frac{(Y-A) \times C}{B \times D}$$

where: Y = response of analyte of interest (area ratio)

A = intercept from linear regression analysis

B = slope from linear regression analysis (response per concentration)

C = final sample volume (mL)

D = sample weight (g)

E = concentration of analyte in sample in parts per billion (ppb or ng/mL)

VII. SAFETY

All available appropriate Material Safety Data Sheets should be available to the study personnel during the conduct of the study. General laboratory safety precautions should be taken. This method does not present any specific risks.

VIII. REFERENCES

1. "Isoxaflutole and/or metabolites: an analytical method for the determination of residues in drinking water" AR 112-95 I. Le Gren, July 27, 1995.
2. "Isoxaflutole and/or metabolites: Analytical method for the determination of residues in soil" AR 106-95(E) I. Le Gren, Jan 17, 1995.
3. "Isoxaflutole and/or metabolites: Analytical method for the determination of residues in animal products" AR 109-95(E) I. Le Gren, April 12, 1995.

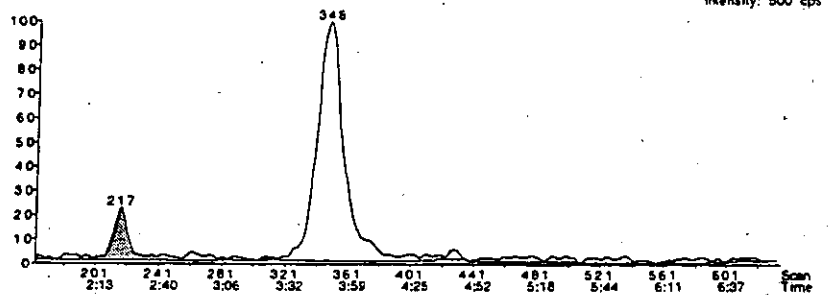
IX. EXAMPLE CHROMATOGRAMS

A. Calibration Data

Figure 1. Standard: 0.01 ng/ml - RPA 201772, RPA 202248, RPA 203328

IFT99Feb 11A1048 0.01std 13C Feb 11 Thu, Feb 11, 1999 23:37
No Comment

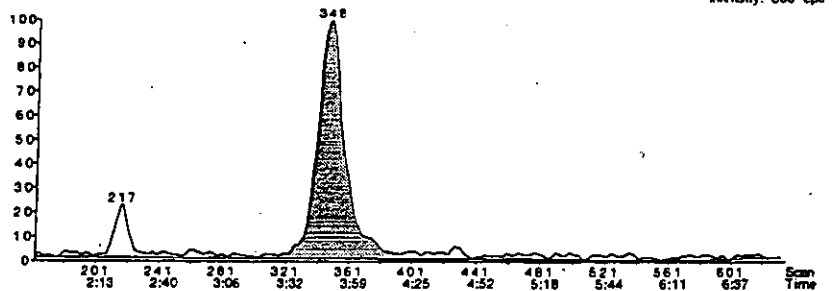
.659 in 2 periods
IFT RPA 201772
Internal Standard: 13C 201772 ISTD
Use Area
Absolute Retention Time
2: 5:11 MRM, 472 scans
357.8->78.8
Noise Thres. 1.5
Quant Thres. 0.3
Min. Width 6
Mult. Width 12
Base. Width 100
RT Win. (secs) 20
Smooth 4
Expected RT 2:31
Area 744
Height 106
Start Time 2:12
End Time 2:38
Integration Width 0:25.7
Retention Time 2:24
Integration Type A - BV



IFT99Feb 11A1048 0.01std 13C Feb 11 Thu, Feb 11, 1999 23:37
No Comment

IFT99Feb 11A1048 0.01std 13C Feb 11 Thu, Feb 11, 1999 23:37
No Comment

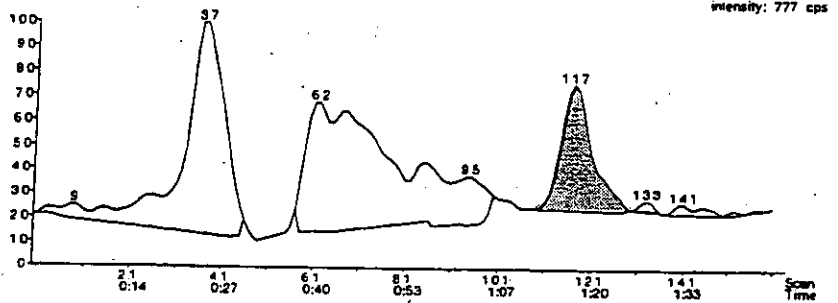
.659 in 2 periods
RPA 202248
Internal Standard: 13C 202248 ISTD
Use Area
Absolute Retention Time
2: 5:11 MRM, 472 scans
357.8->78.8
Noise Thres. 1.5
Quant Thres. 0.3
Min. Width 6
Mult. Width 10
Base. Width 200
RT Win. (secs) 100
Smooth 4
Expected RT 3:25
Area 6484
Height 481
Start Time 3:30
End Time 4:18
Integration Width 0:48.2
Retention Time 3:50
Integration Type A - VV



IFT99Feb 11A1048 0.01std 13C Feb 11 Thu, Feb 11, 1999 23:37

IFT99Feb 11A1048 0.01std 13C Feb 11 Thu, Feb 11, 1999 23:37
No Comment

.659 in 2 periods
RPA 203328
Internal Standard: 13C 203328 ISTD
Use Area
Absolute Retention Time
1: 1:47 MRM, 163 scans
286.9->158.9
Noise Thres. 10.0
Quant Thres. 0.5
Min. Width 6
Mult. Width 10
Base. Width 42
RT Win. (secs) 20
Smooth 3
Expected RT 1:11
Area 1899
Height 395
Start Time 1:13
End Time 1:24
Integration Width 0:11.9
Retention Time 1:17
Integration Type A - BB

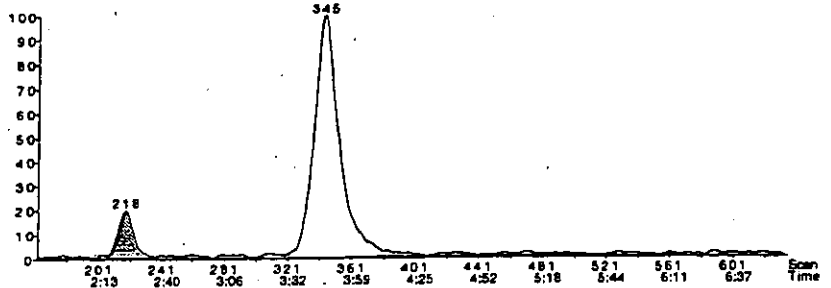


IFT99Feb 11A1048 0.01std 13C Feb 11 Thu, Feb 11, 1999 23:37
No Comment

Figure 2. Standard: 0.02 ng/ml - RPA 201772, RPA 202248, RPA 203328

IFT99Feb 11A1047 0.02std 13C Feb 11 Thu, Feb 11, 1999 23:29
No Comment

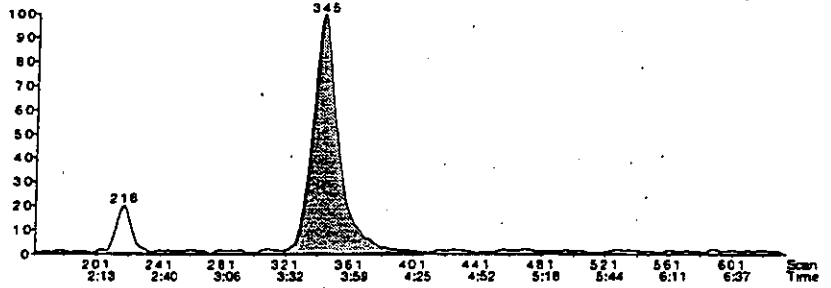
6:59 in 2 periods
IFT RPA 201772
Internal Standard: 13C 201772 ISTD
Use Area
Absolute Retention Time
2: 5:11 MRM, 472 scans
357.8->78.8
Noise Thres. 1.5
Quant Thres. 0.3
Min. Width 6
Mult. Width 12
Base. Width 100
RT Win. (secs) 2.0
Smooth 4
Expected RT 2:31
Area 1535
Height 202
Start Time 2:12
End Time 2:36
Integration Width 0:23.8
Retention Time 2:24
Integration Type A - BV



intensity: 1043 cps

IFT99Feb 11A1047 0.02std 13C Feb 11 Thu, Feb 11, 1999 23:29
No Comment

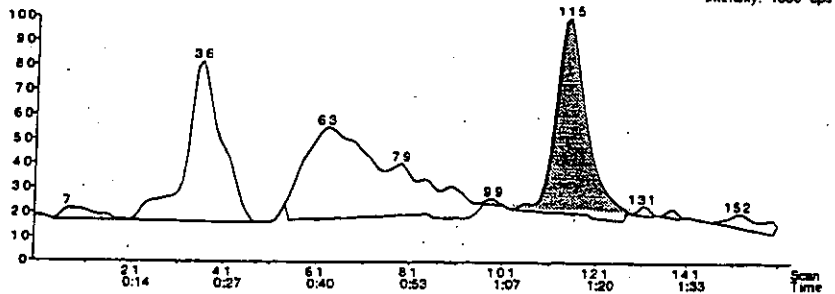
6:59 in 2 periods
RPA 202248
Internal Standard: 13C 202248 ISTD
Use Area
Absolute Retention Time
2: 5:11 MRM, 472 scans
357.8->78.8
Noise Thres. 1.5
Quant Thres. 0.3
Min. Width 6
Mult. Width 10
Base. Width 200
RT Win. (secs) 100
Smooth 4
Expected RT 3:25
Area 12694
Height 1034
Start Time 3:31
End Time 4:21
Integration Width 0:57.4
Retention Time 3:48
Integration Type A - VB



intensity: 1043 cps

IFT99Feb 11A1047 0.02std 13C Feb 11 Thu, Feb 11, 1999 23:29
No Comment

6:59 in 2 periods
RPA 203328
Internal Standard: 13C 203328 ISTD
Use Area
Absolute Retention Time
1: 1:47 MRM, 163 scans
266.9->158.9
Noise Thres. 10.0
Quant Thres. 0.5
Min. Width 6
Mult. Width 10
Base. Width 42
RT Win. (secs) 2.0
Smooth 3
Expected RT 1:11
Area 3979
Height 789
Start Time 1:09
End Time 1:24
Integration Width 0:15.2
Retention Time 1:16
Integration Type A - BB



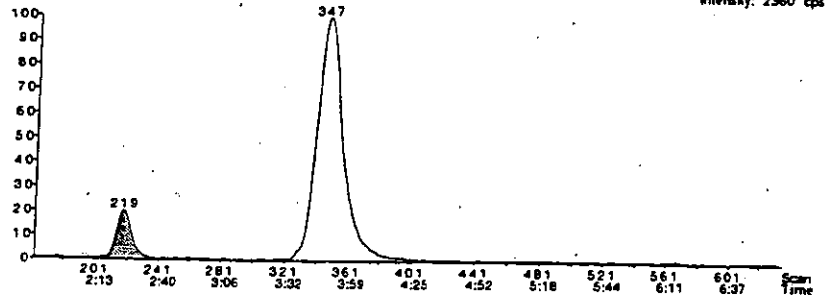
intensity: 1000 cps

IFT99Feb 11A1047 0.02std 13C Feb 11 Thu, Feb 11, 1999 23:29

Figure 3. Standard: 0.05 ng/ml - RPA 201772, RPA 202248, RPA 203328

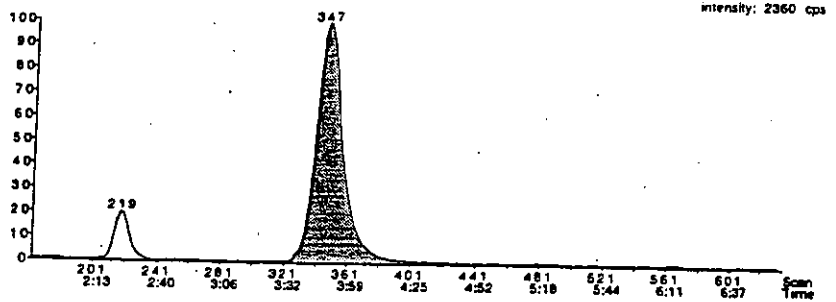
IFT99Feb 11A1046 0.05std 13C Feb 11 Thu, Feb 11, 1999 23:20
No Comment

6:59 in 2 periods
IFT RPA 201772
Internal Standard: 13C 201772 ISTD
Use Area
Absolute Retention Time
2: 5:11 MRM, 472 scans
357.8->78.6
Noise Thres. 1.5
Quant Thres. 0.3
Min. Width 6
Mult. Width 12
Base Width 100
RT Win. (secs) 20
Smooth 4
Expected RT 2:31
Area 3526
Height 468
Start Time 2:09
End Time 2:38
Integration Width 0.29.0
Retention Time 2:25
Integration Type A - BV



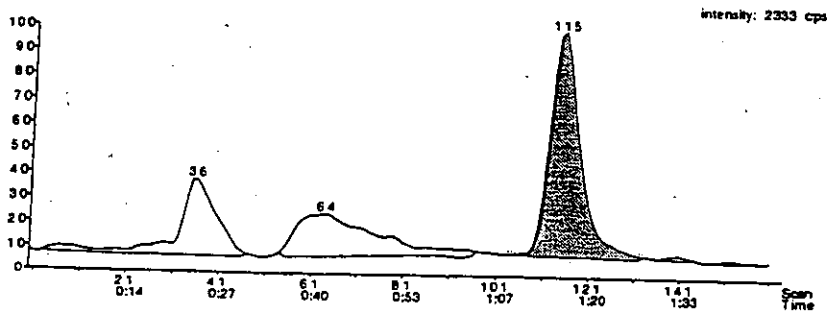
IFT99Feb 11A1046 0.05std 13C Feb 11 Thu, Feb 11, 1999 23:20
No Comment

6:59 in 2 periods
RPA 202248
Internal Standard: 13C 202248 ISTD
Use Area
Absolute Retention Time
2: 5:11 MRM, 472 scans
357.8->78.8
Noise Thres. 1.5
Quant Thres. 0.3
Min. Width 6
Mult. Width 10
Base Width 200
RT Win. (secs) 100
Smooth 4
Expected RT 3:25
Area 30874
Height 2351
Start Time 3:27
End Time 4:28
Integration Width 1.01
Retention Time 3:49
Integration Type A - VV



IFT99Feb 11A1046 0.05std 13C Feb 11 Thu, Feb 11, 1999 23:20
No Comment

6:59 in 2 periods
RPA 203328
Internal Standard: 13C 203328 ISTD
Use Area
Absolute Retention Time
1: 1:47 MRM, 163 scans
266.8->158.8
Noise Thres. 10.0
Quant Thres. 0.5
Min. Width 6
Mult. Width 10
Base Width 42
RT Win. (secs) 20
Smooth 3
Expected RT 1:11
Area 10722
Height 2133
Start Time 1:09
End Time 1:27
Integration Width 0:18.5
Retention Time 1:16
Integration Type A - BB

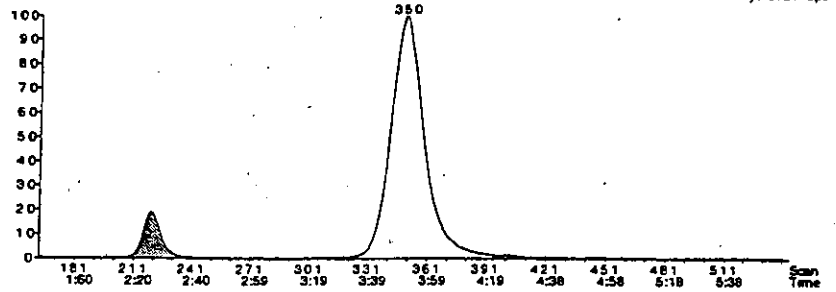


IFT99Feb 11A1046 0.05std 13C Feb 11 Thu, Feb 11, 1999 23:20
No Comment

Figure 4. Standard: 0.08 ng/ml - RPA 201772, RPA 202248, RPA 203328

IFT99Feb 11A1045 0.08std 13C Feb 11 Thu, Feb 11, 1999 23:13
No Comment

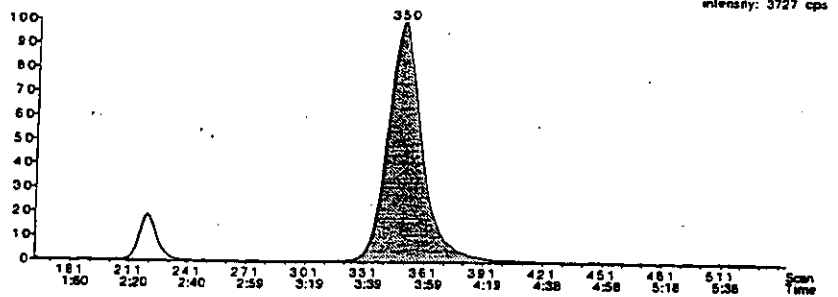
5:59 in 2 periods
IFT RPA 201772
Internal Standard: 13C 201772 ISTD
Use Area
Absolute Retention Time
2: 4:11 MRM, 381 scans
357.8->78.8
Noise Thres. 1.5
Quant Thres. 0.3
Min. Width 6
Mult. Width 12
Base Width 100
RT Win. (secs) 20
Smooth 4
Expected RT 2:31
Area 5110
Height 707
Start Time 2:12
End Time 2:47
Integration Width 0:35.0
Retention Time 2:26
Integration Type A - BV



IFT99Feb 11A1045 0.08std 13C Feb 11 Thu, Feb 11, 1999 23:13

IFT99Feb 11A1045 0.08std 13C Feb 11 Thu, Feb 11, 1999 23:13
No Comment

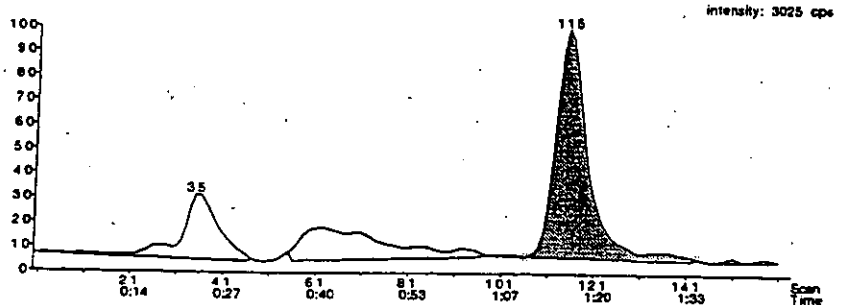
5:59 in 2 periods
RPA 202248
Internal Standard: 13C 202248 ISTD
Use Area
Absolute Retention Time
2: 4:11 MRM, 381 scans
357.8->78.8
Noise Thres. 1.5
Quant Thres. 0.3
Min. Width 6
Mult. Width 10
Base Width 200
RT Win. (secs) 100
Smooth 4
Expected RT 3:25
Area 48795
Height 3718
Start Time 3:16
End Time 4:44
Integration Width 1:22
Retention Time 3:51
Integration Type A - BV



IFT99Feb 11A1045 0.08std 13C Feb 11 Thu, Feb 11, 1999 23:13
No Comment

IFT99Feb 11A1045 0.08std 13C Feb 11 Thu, Feb 11, 1999 23:13
No Comment

5:59 in 2 periods
RPA 203328
Internal Standard: 13C 203328 ISTD
Use Area
Absolute Retention Time
1: 1:47 MRM, 163 scans
266.8->158.9
Noise Thres. 10.0
Quant Thres. 0.5
Min. Width 6
Mult. Width 10
Base Width 42
RT Win. (secs) 20
Smooth 3
Expected RT 1:11
Area 15057
Height 2815
Start Time 1:10
End Time 1:34
Integration Width 0:23.8
Retention Time 1:16
Integration Type A - BB

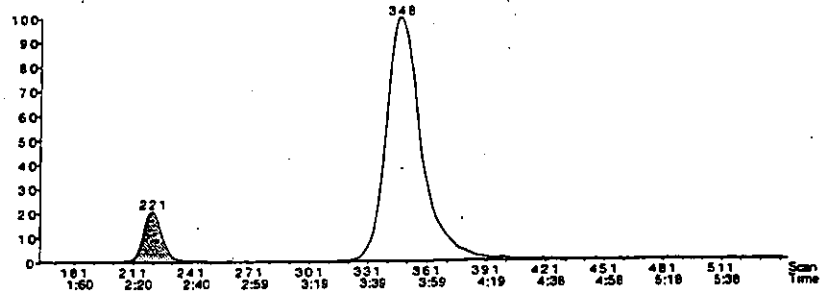


IFT99Feb 11A1045 0.08std 13C Feb 11 Thu, Feb 11, 1999 23:13
No Comment

Figure 5. Standard: 0.1 ng/ml - RPA 201772, RPA 202248, RPA 203328

IFT99Feb 11A1044 0.1std 13C Feb 11 Thu, Feb 11, 1999 23:05
No Comment

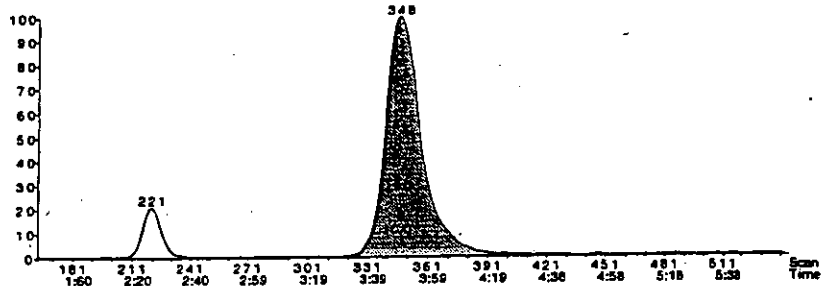
5:59 in 2 periods
IFT RPA 201772
Internal Standard: 13C 201772 ISTD
Use Area
Absolute Retention Time
2: 4:11 MRM, 361 scans
357.8->78.8
Noise Thres. 1.5
Quant Thres. 0.3
Min. Width 6
Mult. Width 12
Base. Width 100
RT Wn. (secs) 20
Smooth 4
Expected RT 2:31
Area 6076
Height 787
Start Time 2:09
End Time 2:53
Integration Width 0.443
Retention Time 2:26
Integration Type A - BB



IFT99Feb 11A1044 0.1std 13C Feb 11 Thu, Feb 11, 1999 23:05
No Comment

IFT99Feb 11A1044 0.1std 13C Feb 11 Thu, Feb 11, 1999 23:05
No Comment

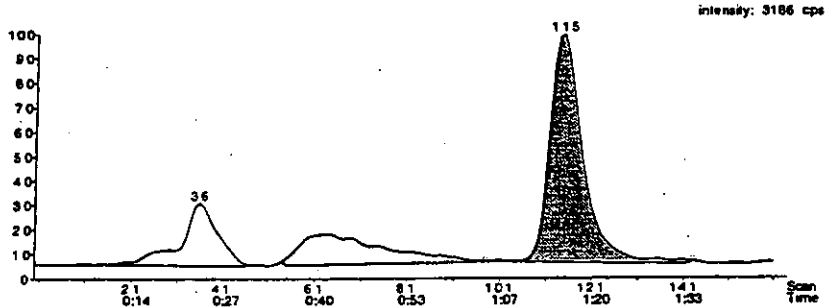
5:59 in 2 periods
RPA 202248
Internal Standard: 13C 202248 ISTD
Use Area
Absolute Retention Time
2: 4:11 MRM, 361 scans
357.8->78.8
Noise Thres. 1.5
Quant Thres. 0.3
Min. Width 6
Mult. Width 10
Base. Width 200
RT Wn. (secs) 100
Smooth 4
Expected RT 3:21
Area 52371
Height 3812
Start Time 3:28
End Time 4:34
Integration Width 1.06
Retention Time 3:40
Integration Type A - VV



IFT99Feb 11A1044 0.1std 13C Feb 11 Thu, Feb 11, 1999 23:05
No Comment

IFT99Feb 11A1044 0.1std 13C Feb 11 Thu, Feb 11, 1999 23:05
No Comment

5:59 in 2 periods
RPA 203328
Internal Standard: 13C 203328 ISTD
Use Area
Absolute Retention Time
1: 1:47 MRM, 163 scans
266.9->158.9
Noise Thres. 10.0
Quant Thres. 0.5
Min. Width 6
Mult. Width 10
Base. Width 42
RT Wn. (secs) 20
Smooth 3
Expected RT 1:11
Area 16466
Height 2974
Start Time 1:05
End Time 1:34
Integration Width 0.280
Retention Time 1:16
Integration Type A - BB



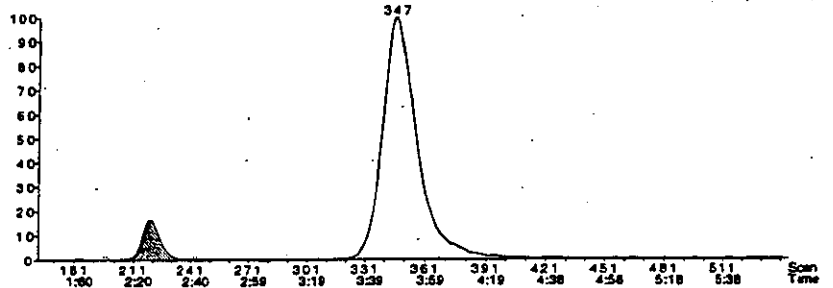
IFT99Feb 11A1044 0.1std 13C Feb 11 Thu, Feb 11, 1999 23:05
No Comment

Figure 6. Internal Standard: 0.1 ng/ml - RPA 201772, 202248, and 203328

IFT99Feb 11A1044 0,1std 13C Feb 11 Thu, Feb 11, 1999 23:05
No Comment

5:59 in 2 periods
13C 201772 ISTD
use as Internal Standard

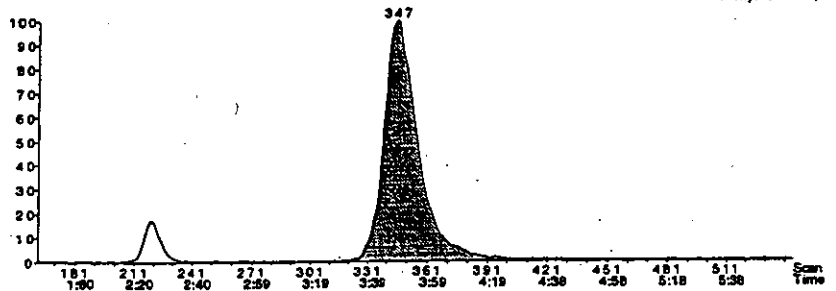
2: 4:11 MRM, 381 scans
363.8->78.8
Noise Thres. 10.0
Quant Thres. 0.3
Min. Width 6
Mult. Width 12
Base Width 100
RT Win. (secs) 20
Smooth 4
Expected RT 2:31
Area 4623
Height 628
Start Time 2:10
End Time 2:41
Integration Width 0:30.4
Retention Time 2:26
Integration Type A - BV



IFT99Feb 11A1044 0,1std 13C Feb 11 Thu, Feb 11, 1999 23:05
No Comment

5:59 in 2 periods
13C 202248 ISTD
use as Internal Standard

2: 4:11 MRM, 381 scans
363.8->78.8
Noise Thres. 20.0
Quant Thres. 0.5
Min. Width 6
Mult. Width 10
Base Width 200
RT Win. (secs) 100
Smooth 2
Expected RT 3:24
Area 49968
Height 3855
Start Time 3:30
End Time 4:34
Integration Width 1:04
Retention Time 3:49
Integration Type A - BV



IFT99Feb 11A1044 0,1std 13C Feb 11 Thu, Feb 11, 1999 23:05
No Comment

5:59 in 2 periods
13C 203328 ISTD
use as Internal Standard

1: 1:47 MRM, 163 scans
272.9->164.9
Noise Thres. 20.0
Quant Thres. 0.5
Min. Width 6
Mult. Width 10
Base Width 35
RT Win. (secs) 20
Smooth 3
Expected RT 1:13
Area 15230
Height 2985
Start Time 1:10
End Time 1:32
Integration Width 0:22.4
Retention Time 1:15
Integration Type A - BB

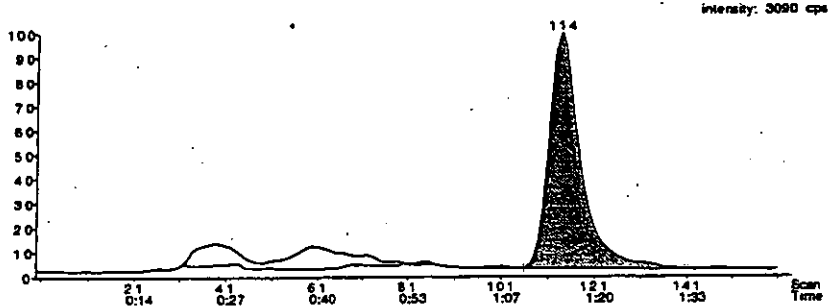


Figure 7. Standard Calibration Curve for RPA 201772

MacQvan, version 1.6

Page 1 of 1

Printed: Fri, Feb 12, 1999 08:04

Calibration File: Cal99Feb 11 Int Path: Lab 1521 AL G3:CAS on AL G3:IFT:IFT Steve STC:Soil Method STC:IFT 1999:Feb99:In 99Feb11:

Comments: No comments

IFT RPA 201772 357.8->78.8 Internal Standard: 13C 201772 ISTD

Linear

Intercept = 0.050

Slope = 11.634

Correlation Coeff. = 0.9925

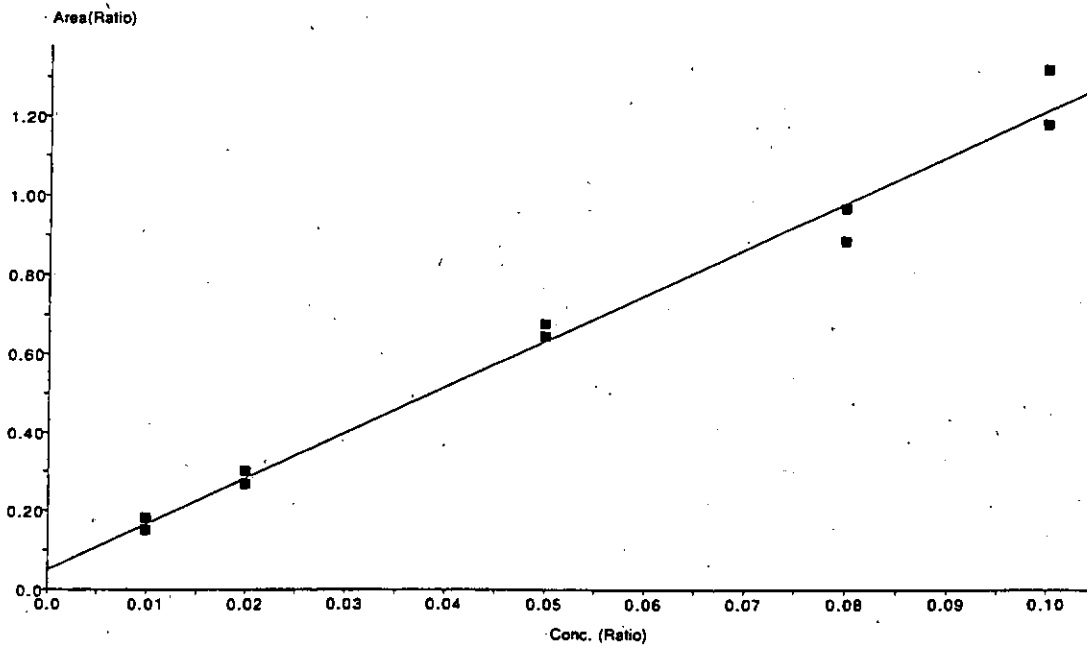


Figure8. Standard Calibration Curve for RPA 202248

MacQuan, version 1.6
Printed: Fri, Feb 12, 1999 08:04
Calibration File: Cal99Feb 11 Int Path: Lab 1521 AL G3:CAS on AL G3:IFT:IFT Sieve STC:Soil Method STC:IFT 1999:Feb99:Jh 99Feb11:
Comments: No comments

RPA 202248 357.8->78.8 Internal Standard: 13C 202248 ISTD

Linear
Intercept = 0.014
Slope = 10.359
Correlation Coeff. = 0.9997

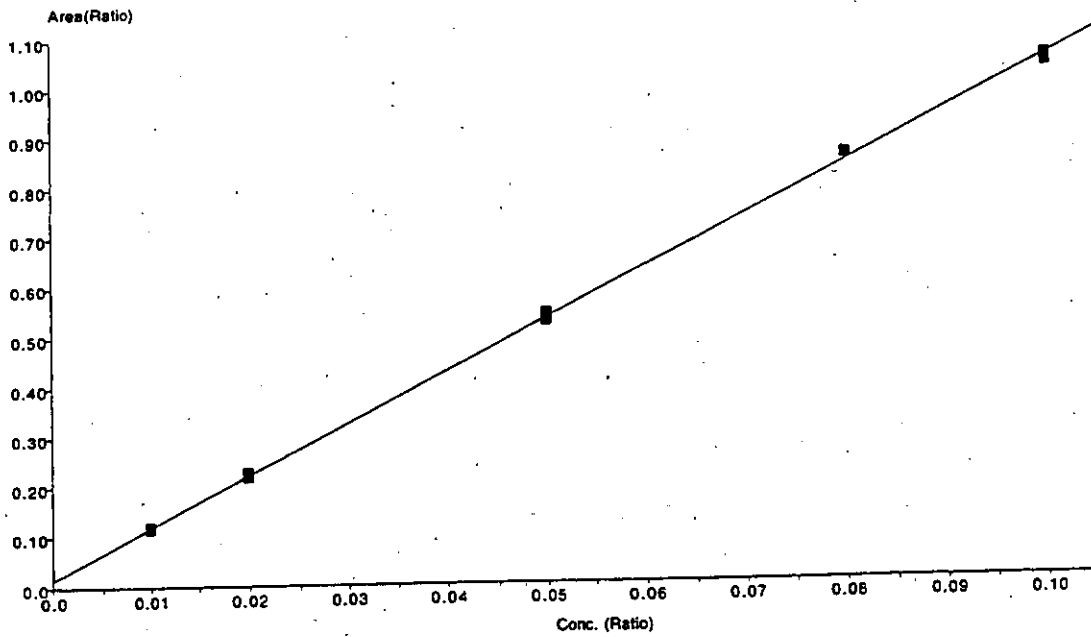


Figure 9. Standard Calibration Curve for RPA 203328

MacQuan, version 1.6

Printed: Fri, Feb 12, 1999 08:04

Calibration File: Cal99Feb 11 int Path: Lab 1521 AL G3:CAS on AL G3:IFT:IFT Steve STC:Soil Method STC:IFT 1999:Feb99:M 99Feb11:

Comments: No comments

Page 1 of 1

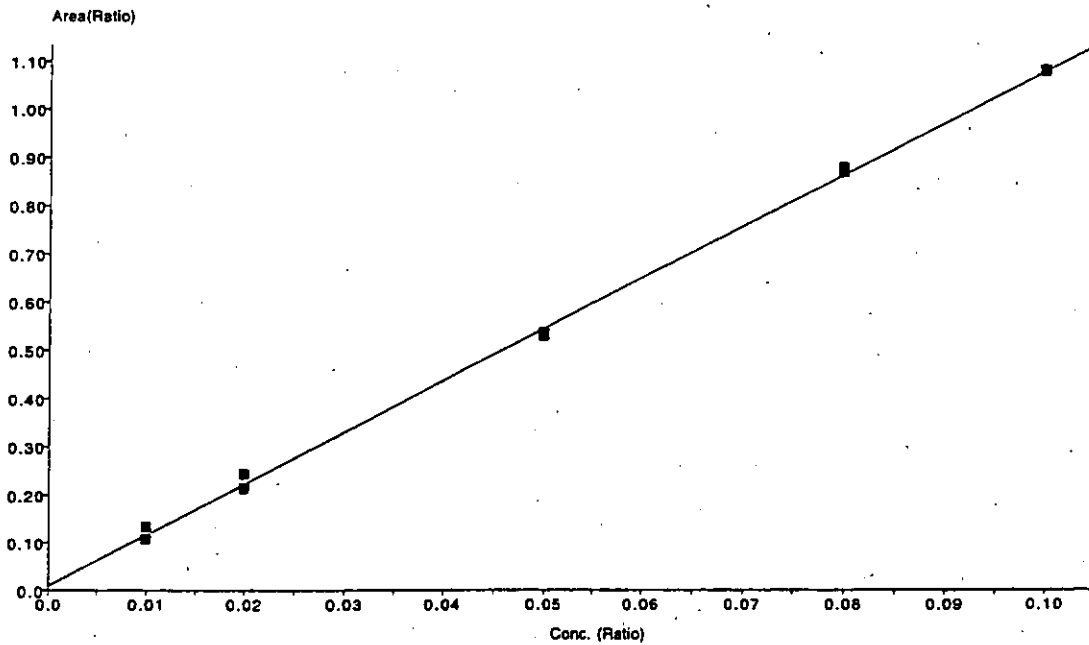
RPA 203328 266.9->158.9 Internal Standard: 13C 203328 ISTD

Linear:

Intercept = 0.009

Slope = 10.710

Correlation Coeff. = 0.9995

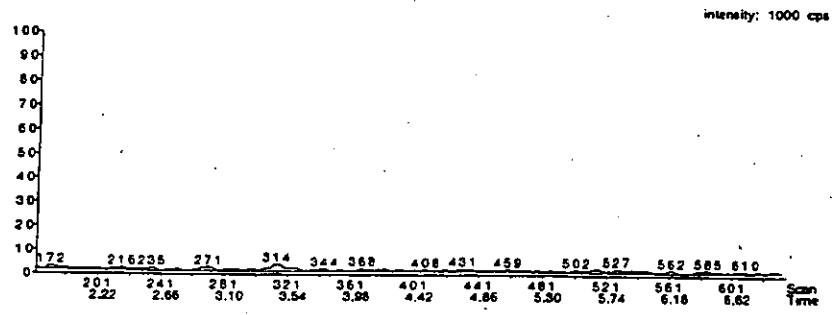


B. Chromatograms of Samples

Figure 10 Nebraska Soil UTC

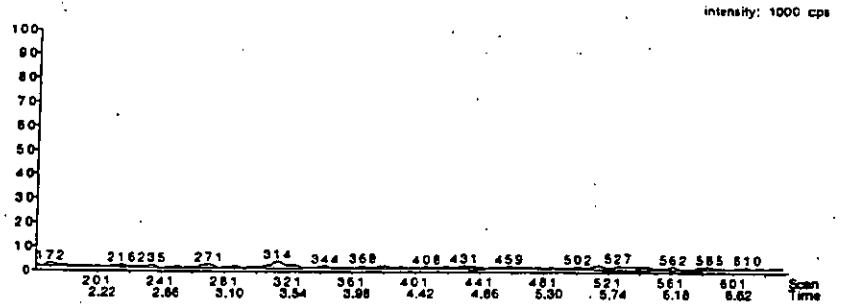
IFT98Jan 14A1028 N12 Thu, Jan 14, 1999 20:45
No Comment

6.98 in 2 periods
IFT RPA 201772
Internal Standard: 13C 201772 ISTD
Use Area
Absolute Retention Time
2: 5.18 MRM, 472 scans
357.8->78.8
Noise Thres. 1.5
Quant Thres. 0.3
Min. Width 6
Mult. Width 12
Base. Width 100
RT Win. (secs) 20
Smooth 4
Expected RT 2.82
Area 0
Height 0
Start Time 0.00
End Time 0.00
Integration Width 0.00
Retention Time 0.00
Integration Type



IFT98Jan 14A1028 N12 Thu, Jan 14, 1999 20:45
No Comment

6.98 in 2 periods
RPA 202246
Internal Standard: 13C 202246 ISTD
Use Area
Absolute Retention Time
2: 5.18 MRM, 472 scans
357.8->78.8
Noise Thres. 3.0
Quant Thres. 0.3
Min. Width 6
Mult. Width 10
Base. Width 200
RT Win. (secs) 100
Smooth 4
Expected RT 3.42
Area 0
Height 0
Start Time 0.00
End Time 0.00
Integration Width 0.00
Retention Time 0.00
Integration Type



IFT98Jan 14A1028 N12 Thu, Jan 14, 1999 20:45
No Comment

6.98 in 2 periods
RPA 203328
Internal Standard: 13C 203328 ISTD
Use Area
Absolute Retention Time
1: 1.78 MRM, 163 scans
266.9->156.9
Noise Thres. 10.0
Quant Thres. 0.5
Min. Width 6
Mult. Width 10
Base. Width 42
RT Win. (secs) 20
Smooth 3
Expected RT 1.19
Area 0
Height 0
Start Time 0.00
End Time 0.00
Integration Width 0.00
Retention Time 0.00
Integration Type

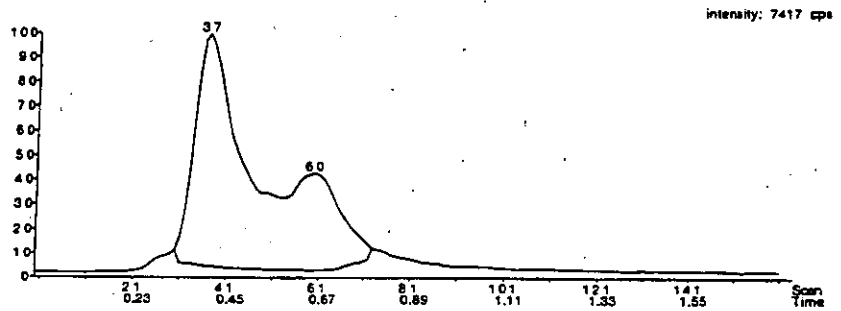
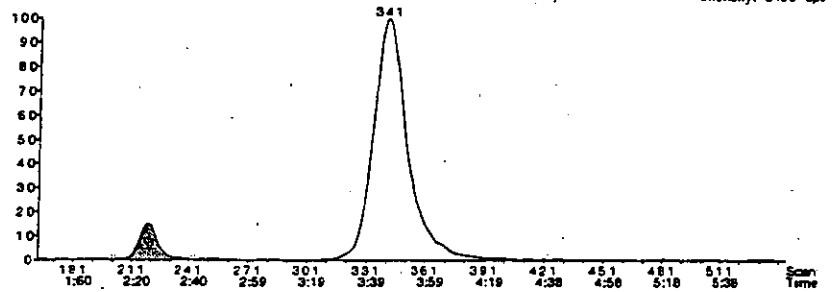


Figure 12 Nebraska Soil Internal Standard Spike

IFT99Feb 11A1042 Neb 36-48 b Thu, Feb 11, 1999 22:50

No Comment
5:59 in 2 periods
13C 201772 ISTD
use as Internal Standard

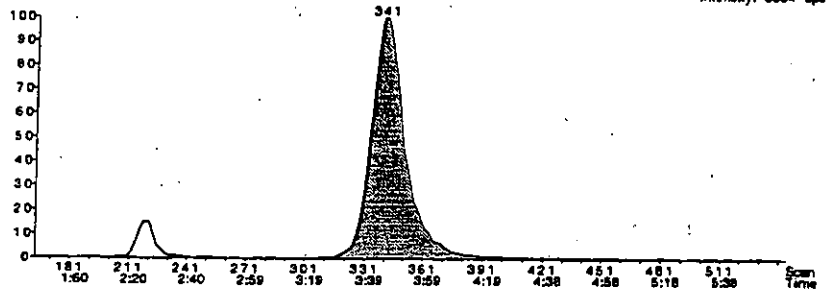
2: 4:11 MRM, 381 scans
363.8->78.8
Noise Thres. 10.0
Quant Thres. 0.3
Min. Width 6
Mult. Width 12
Base. Width 100
RT Win. (secs) 20
Smooth 4
Expected RT 2:31
Area 3927
Height 622
Start Time 2:14
End Time 2:41
Integration Width 0:27.1
Retention Time 2:26
Integration Type A - VV



IFT99Feb 11A1042 Neb 36-48 b Thu, Feb 11, 1999 22:50

No Comment
5:59 in 2 periods
13C 202248 ISTD
use as Internal Standard

2: 4:11 MRM, 381 scans
363.8->78.8
Noise Thres. 20.0
Quant Thres. 0.5
Min. Width 6
Mult. Width 10
Base. Width 200
RT Win. (secs) 100
Smooth 2
Expected RT 3:24
Area 47501
Height 3526
Start Time 3:20
End Time 4:40
Integration Width 1:20
Retention Time 3:46
Integration Type A - BV



IFT99Feb 11A1042 Neb 36-48 b Thu, Feb 11, 1999 22:50

No Comment
5:59 in 2 periods
13C 203328 ISTD
use as Internal Standard

1: 1:47 MRM, 163 scans
272.9->164.9
Noise Thres. 20.0
Quant Thres. 0.5
Min. Width 6
Mult. Width 10
Base. Width 35
RT Win. (secs) 20
Smooth 3
Expected RT 1:13
Area 11534
Height 2103
Start Time 1:08
End Time 1:30
Integration Width 0:22.4
Retention Time 1:15
Integration Type A - BB

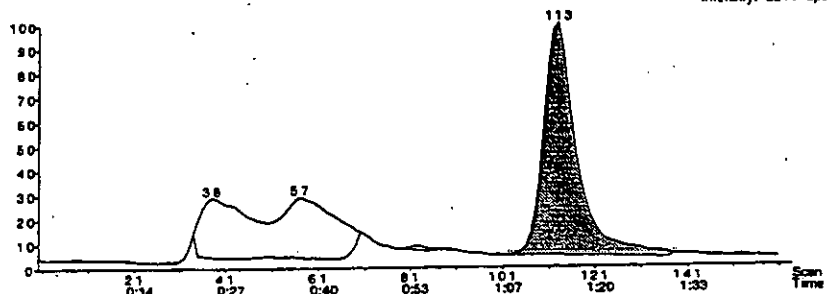
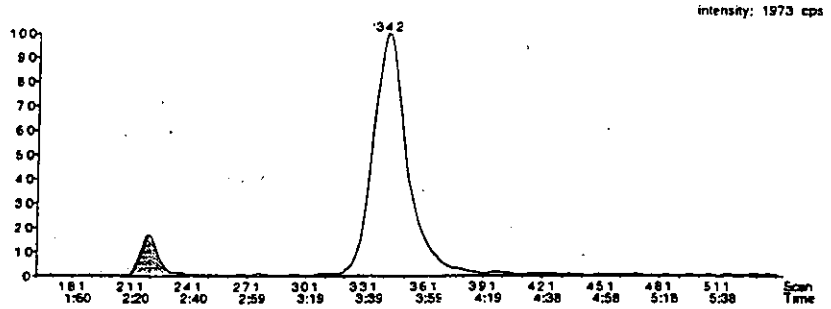


Figure 11 Nebraska Soil Spike (1ppb)

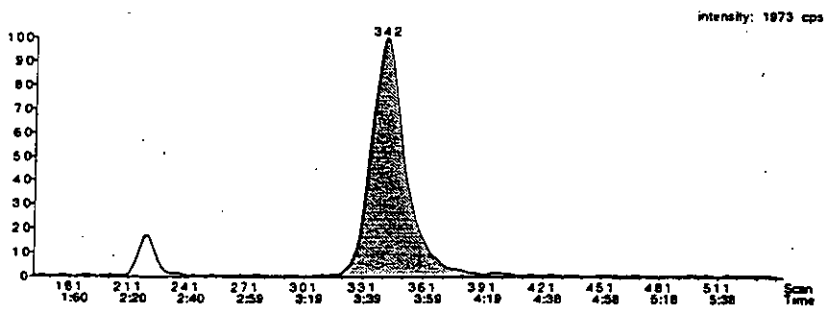
IFT99Feb 11A1042 Neb 36-48 b Thu, Feb 11, 1999 22:50
No Comment

5:59 in 2 periods
IFT RPA 201772
Internal Standard: 13C 201772 ISTD
Use Area
Absolute Retention Time
2: 4:11 MRM, 381 scans
357.8 -> 78.8
Noise Thres. 1.5
Quant Thres. 0.3
Min. Width 6
Mult. Width 12
Base Width 100
RT Win. (secs) 2.0
Smooth 4
Expected RT 2:31
Area 2757
Height 341
Start Time 2:10
End Time 2:31
Integration Width 0:40.3
Retention Time 2:26
Integration Type A - BV



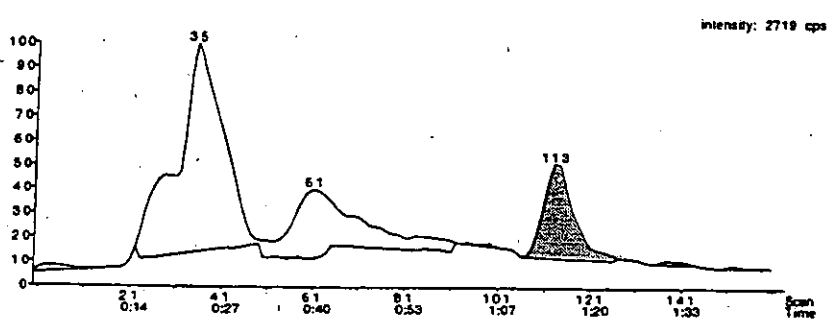
IFT99Feb 11A1042 Neb 36-48 b Thu, Feb 11, 1999 22:50
No Comment

5:59 in 2 periods
RPA 20224E
Internal Standard: 13C 20224E ISTD
Use Area
Absolute Retention Time
2: 4:11 MRM, 381 scans
357.8 -> 76.8
Noise Thres. 1.5
Quant Thres. 0.2
Min. Width 6
Mult. Width 10
Base Width 200
RT Win. (secs) 1.00
Smooth 4
Expected RT 3:25
Area 26110
Height 1965
Start Time 3:21
End Time 4:18
Integration Width 0:56.8
Retention Time 3:46
Integration Type A - BV



IFT89Feb 11A1042 Neb 36-48 b Thu, Feb 11, 1999 22:50
No Comment

5:59 in 2 periods
RPA 20332E
Internal Standard: 13C 20332E ISTD
Use Area
Absolute Retention Time
1: 1:47 MRM, 162 scans
266.8 -> 158.8
Noise Thres 10.0
Quant Thres 0.5
Min. Width 6
Mult. Width 10
Base Width 42
RT Win. (secs) 2.0
Smooth 3
Expected RT 1:11
Area 5251
Height 1052
Start Time 1:11
End Time 1:23
Integration Width 0:12.5
Retention Time 1:15
Integration Type A - BB



Appendix D
Soil Characterization Reports

Soil Characterization reports can be found in the following RPAC study files:

<u>Soil Type</u>	<u>RPAC Study Number</u>
Nebraska soil	98714511
Iowa soil	98714512
Jefferson County, Florida	96M08726
San Juan Bautista, California	US94V01R