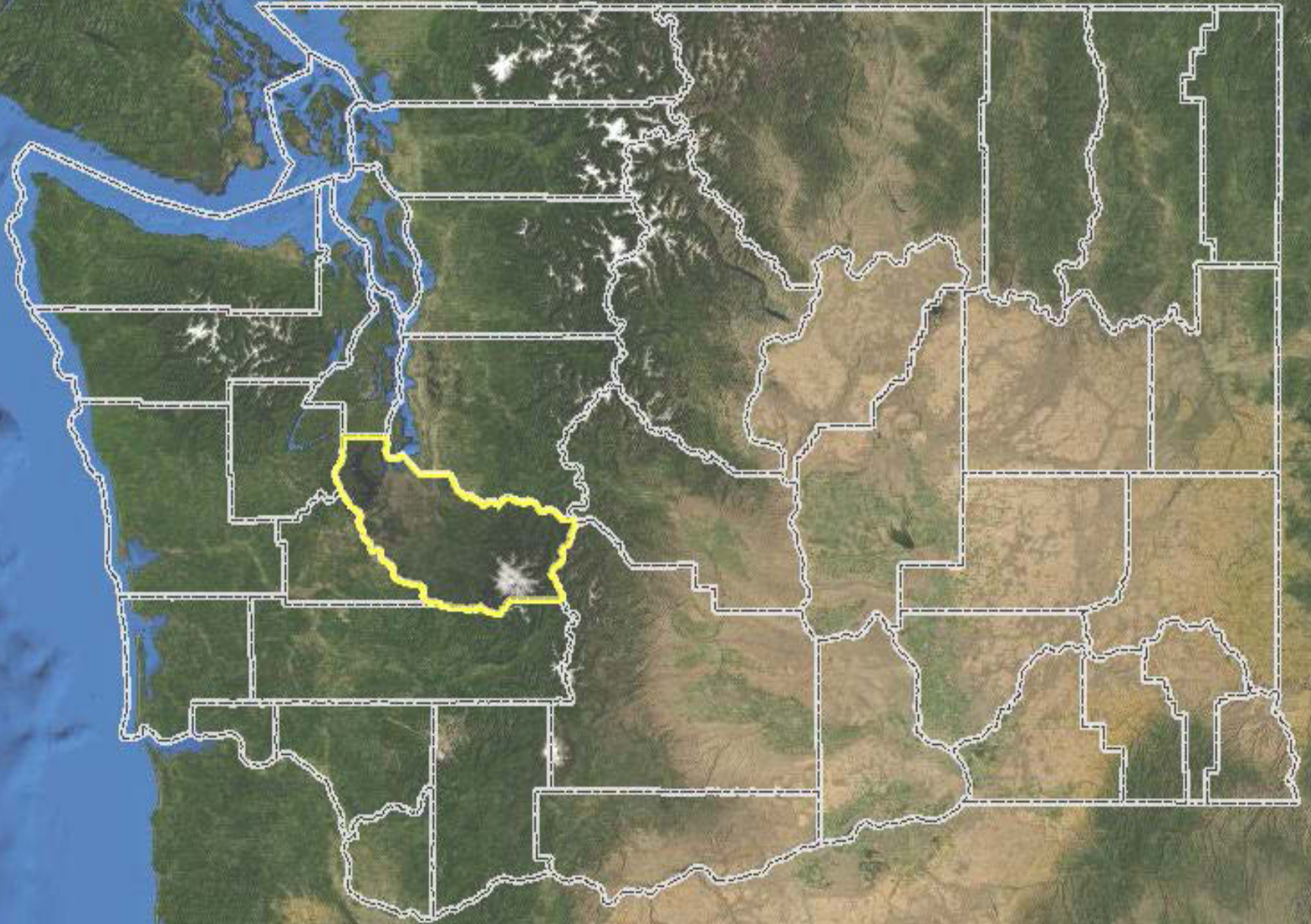


# **Your Environment = Your Health Meaningful Involvement Meaningful Information**

2014 National Training Conference on the Toxic Release  
Inventory and Environmental Conditions in Communities  
May 7, 2014

Marianne Seifert, Tacoma-Pierce County Health Department  
Diane Fowler, Washington State Department of Ecology

# Pierce County, Washington



# Pierce County Environmental Health Indicators Project

- Many organizations and individuals working on environmental health issues.
- Focus groups asked Health Department to share information.
  - Pierce County: Your Environment - Your Health.
  - Want to see current conditions and changes over time.
- Provides essential public health services:
  - Monitor environmental and health status.
  - Inform, educate, and empower.

# What information is meaningful?

2006 Community members and agency representatives formed workgroups to:

- identify criteria.
- improve indicators model.
- review possible indicators.
- select indicators.

2008 Multiple report drafts reviewed by workgroups, staff, focus groups, others.

2010 First report with 21 indicators, public forums.

2011 Toxic Releases indicator forum.

# Selection Criteria

- Urgent, acute health risks.
- Long-term, chronic health risks.
- Potential impact on future generations.
- Impacts on vulnerable populations (children).
- Public concern.
- Economic impacts.
- Meaningful and relevant to local residents, policy makers, others.
- Inform and motivate personal and policy actions.
- Logically and scientifically defensible.

# Indicators Model



# What information is meaningful?

- 2011 Updated report - forums, interviews, presentations, survey, advisory group input. Three indicators changed. Nine removed due to lack of trend data, interest, and meaning.
- 2012 Second report with 12 indicators.
- 2013 Living Well in Pierce County: Happiness, Economy, and Environment conference.
- 2014 Third report with 9 indicators.

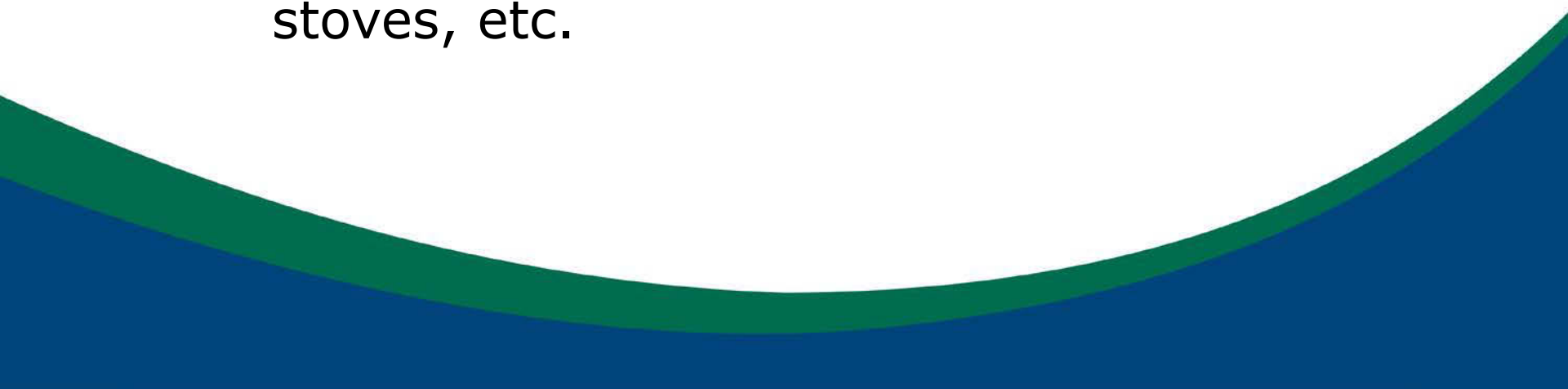
**TRI one of four consistent indicators!**

# What can TRI tell us?

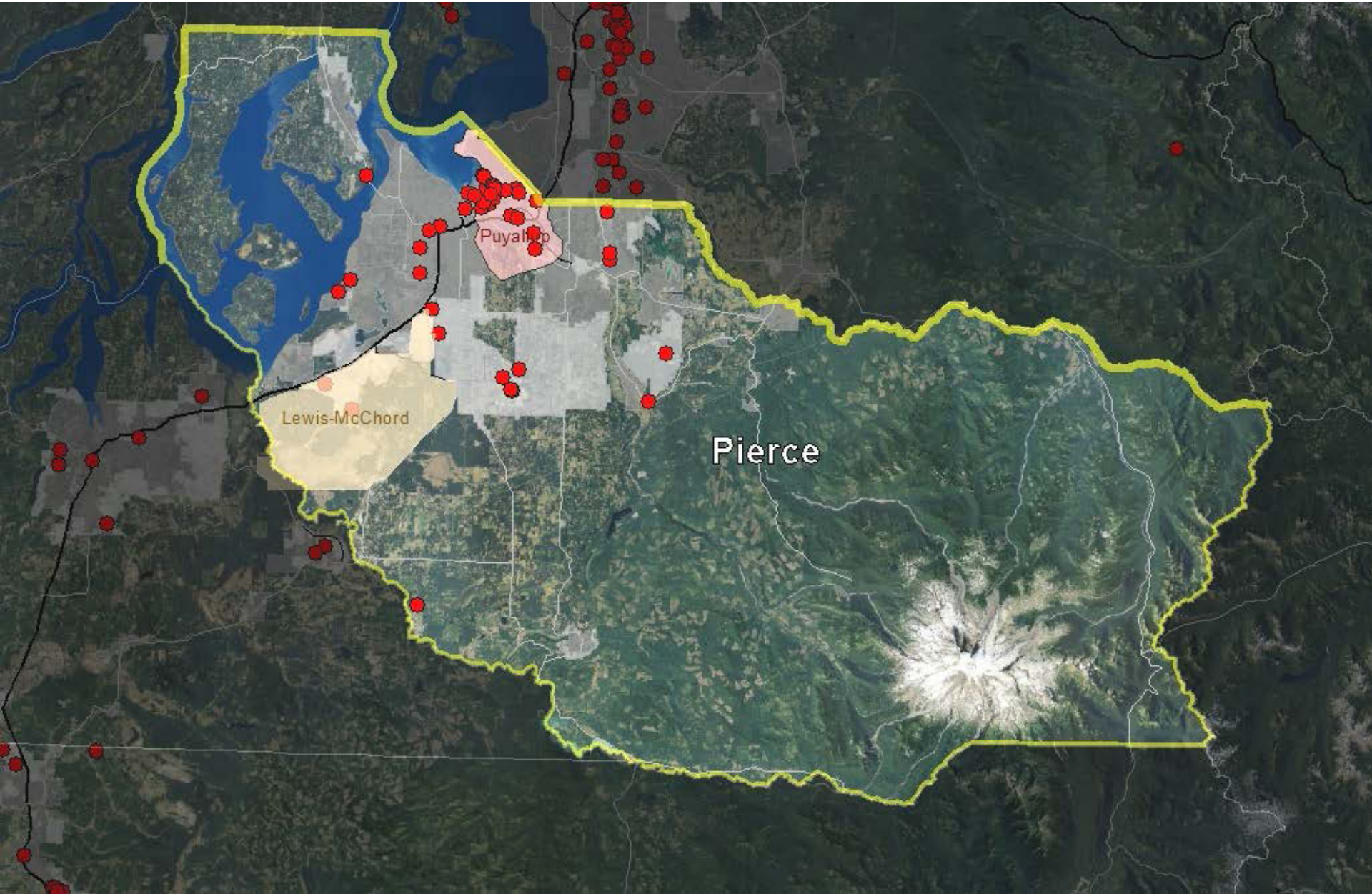
- Reliable, consistent data.
- Release amounts of certain toxic chemicals from large industrial and federal facilities.
- How these chemicals enter environment (air, land, water).
- How facilities manage chemicals through recycling, energy recovery, and treatment.
- Industrial process information useful for Pollution Prevention planning.



# What are TRI's limitations?

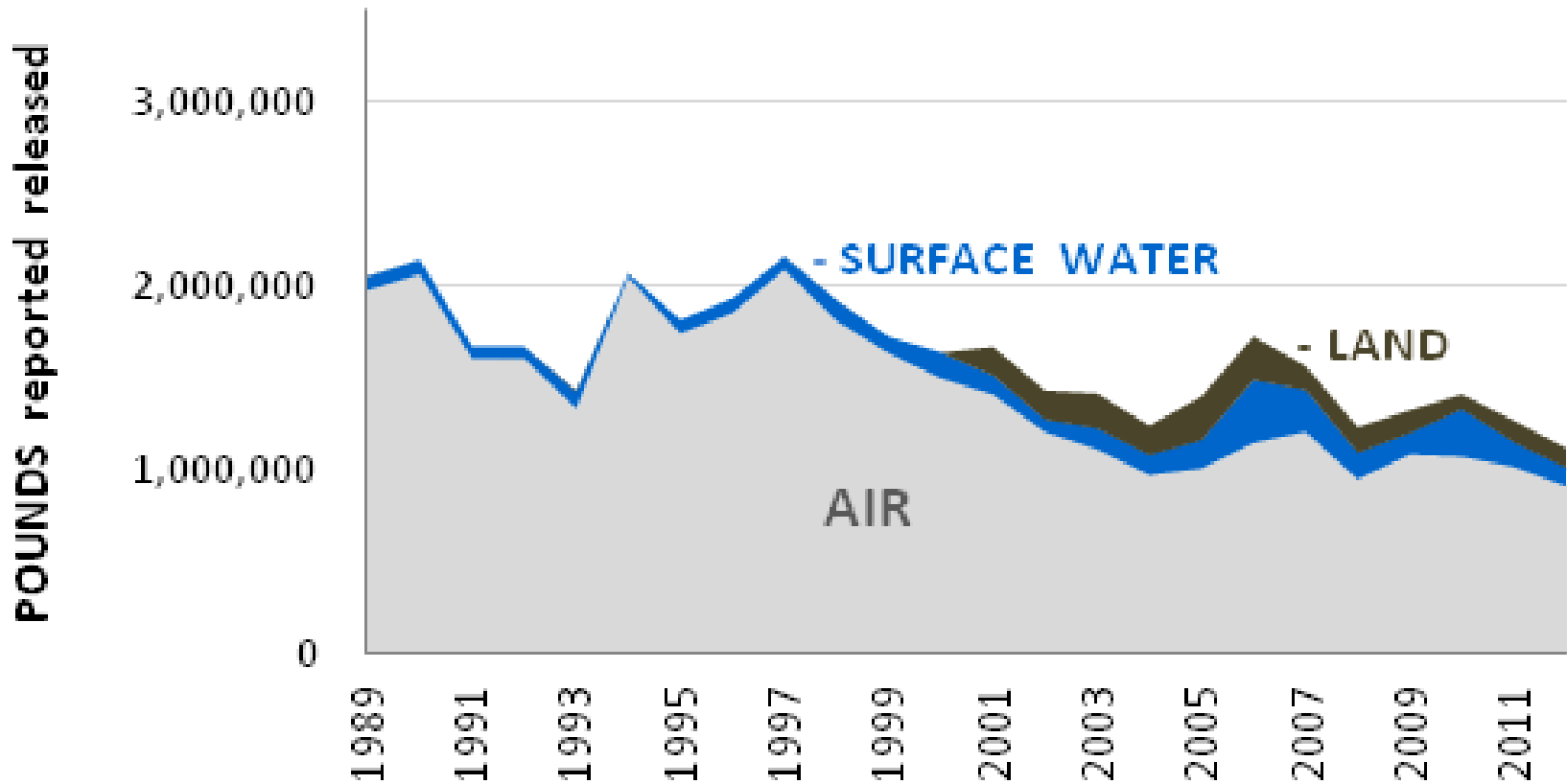
- Only provides data on large industrial sources.
  - Cannot account for everything else that goes down the drain or up into the air!
    - Pharmaceuticals, personal care products.
    - Stormwater runoff.
    - Emissions from cars, wood burning stoves, etc.
- 

# TRI Facilities in Pierce County, WA





# Hazardous Waste Toxic Releases in Pierce County



# Questions or suggestions?

## **Marianne Seifert**

Environmental Health Community Liaison  
Tacoma-Pierce County Health Department  
(253) 798-3823 [mseifert@tpchd.org](mailto:mseifert@tpchd.org)  
[www.tpchd.org/ehindicators](http://www.tpchd.org/ehindicators)

## **Diane Fowler**

TRI Coordinator  
Washington State Department of Ecology  
(360) 407-6171 [dfow461@ECY.WA.GOV](mailto:dfow461@ECY.WA.GOV)  
[www.ecy.wa.gov/epcra/index.html](http://www.ecy.wa.gov/epcra/index.html)