

**Table E-1  
Ambient Air Monitoring Program - Total Detectable PCB Homologues  
New Bedford Harbor Superfund Site**

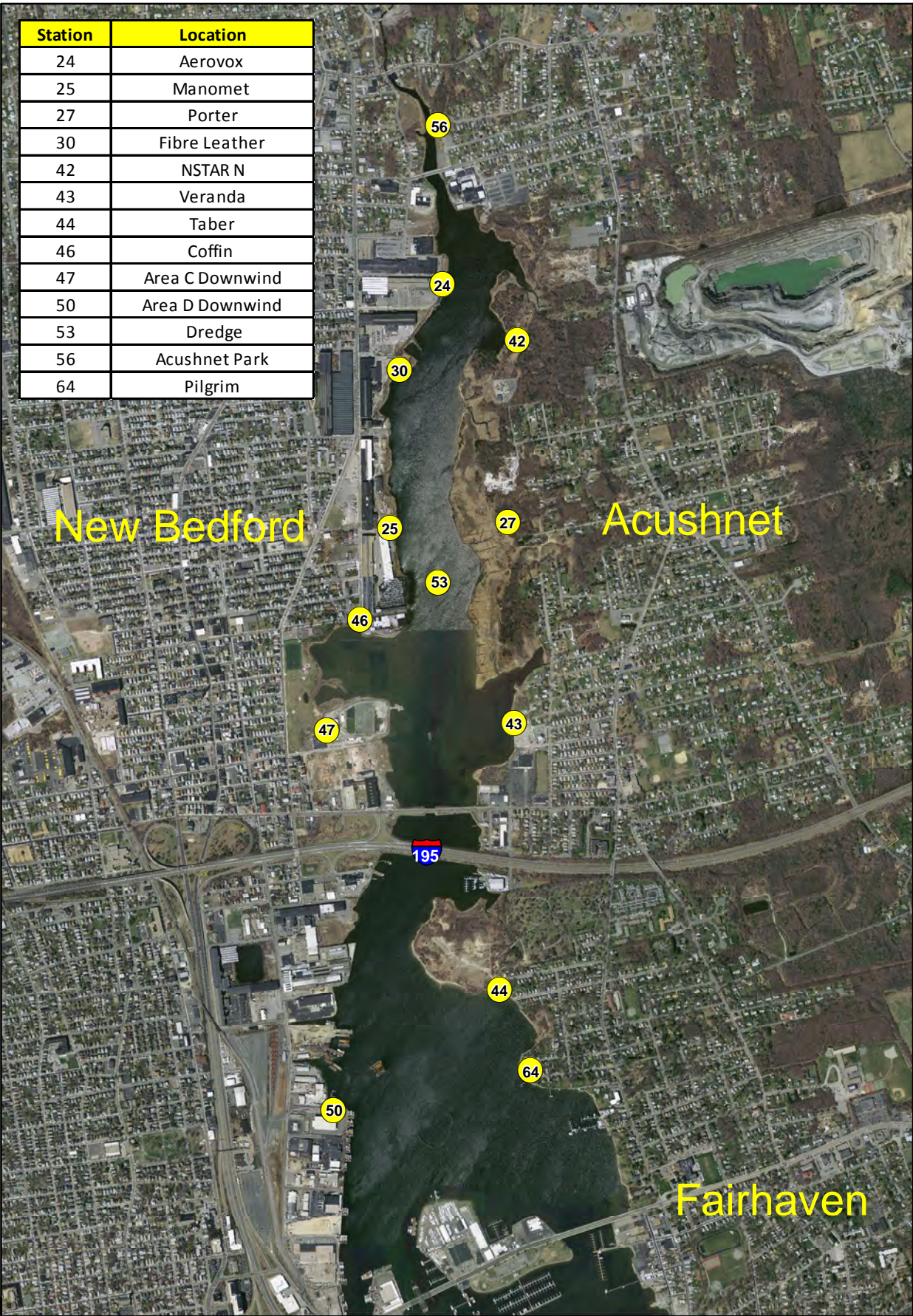
Sampling Date	PCB Concentration by Location (ng/m <sup>3</sup> in 24-hour time-weighted average)																				Activity Period				
	24 Aerovox	25 Manomet	25 Cliftex	27 Porter	30 Fibre Leather	42 NSTAR North	43 Veranda	44 Taber	46 Coffin	Area C			Area D			53 Dredge	55 Aerovox West	56 Acushnet Park	57 Riverside Park	61 South Fence		62 Century House	63 Boathouse	64 Pilgrim	65 LHCC Dredge
											47	48	49	50	51	52									
09/03/14	91	44		9.1	39	36	53	12/10d	10	20	NS	NS	11	NS	NS	100	NS	3.8					11		2014 Hydraulic Dredging in Area R-east.
08/05/14	75	72		8	61	17	37	17	42	55	NS	NS	23	NS	NS	260	NS	4.9					8.5		2014 Hydraulic Dredging in Area R-east.
7/8/2014	82	25		23	36	19	43	34	24	33/33d	NS	NS	22	NS	NS	110	NS	4.2					15		2014 Hydraulic Dredging in Area R-east.
6/16/2014	200	90		12/13d	100	25	35	27	50	25	NS	NS	20	NS	NS	320	NS	21					8.6		2014 Hydraulic Dredging in Area R.
5/7/2014	56.9	32.6		NS	33.8	10.86	29.7	24.3	38.28	13.38	NS	NS	10.96	NS	NS	194	NS	7.01					11.56		2014 Hydraulic Dredging in Area R.
3/18/2014	17	5.8		0.36/0.42d	4.5	2.2	1.7	0.41	ND	3.3	NS	NS	2.8	NS	NS	NS	NS	0.14					0.22		2014 Pre-Dredge Samples for the Upper Harbor.
3/18/2014								0.41					2.8										0.22	NS	Post-Dredge Samples for the Lower Harbor.
12/19/2014								2.32					3.5/3.02d										3.13	0.89	Lower Harbor CAD Cell Construction Phase 1 (top of CAD Cell dredging)
12/4/2013								3.31/3.0d					0.643										2.16	3.57	
11/20/2013								2.17					3.55										1.68/2.0d	6.21	
9/25/2013	25.6	26.5		2.65	14.7	8.05	11.2	NS	4.1	NS	NS	NS	13.3/12.8d	NS	NS	NS	NS	NS					NS		
8/20/2013	230	130		15	160	18	61	NS	60/57d	29	NS	NS	29	NS	NS	240	NS	NS					NS		2013 Post-Dredge Operation.
7/16/2013	240	110		8.1	130	22	36	16	48	110	NS	NS	69	NS	NS	510	NS	NS					14.4		2013 Hydraulic Dredging in Area P.
3/26/2013	14	1.4		3.2	NS	6.6	8.3	1.1	0.65	NS	NS	NS	NS	NS	0.49	NS	NS	NS					1.8/1.8d		2013 Pre-Dredge Samples for the Upper Harbor.
3/26/2013								1.1							0.49								1.8/1.8d	NS	2013 Pre-Dredge Samples for the Lower Harbor.
10/1/2012	98	18		17/18d	25	17	87		18	NS	NS	14	0.56	NS	NS	NS	15	NS			NA				2012 Post Dredge Operation; Sample at Station 62 had insufficient air volume and was not analyzed. Due to several vandalized samples this station has been discontinued.
8/21/2012	67	28		23	17	19	67		14/16d	NS	NS	20	4	NS	NS	NA	0.00033	NS				18			2012 Hydraulic Dredging in Area P; Sample at Station 53 had insufficient air volume and was not analyzed.
7/16/2012	220	1.2		24/24d	110	36	140		26	NS	NS	57	10	NS	NS	280	10	NS				3.3			2012 Hydraulic Dredging in Area L.
7/2/2012	NA	NA		NA	NA	NA	NA		NA	NS	NS	NA	NA	NS	NS	NA	NA	NA				NA			All samples collected were voided due to out of temperature specification upon arrival at laboratory.
5/21/2012	51	NS	67/66d	0.81	NS	NS	NS		NS	NS	NS	NS	NS	NS	NS	NS	NS	NS				0.0029			2012 Pre-Dredge Samples; Station 27 is a new location in 2012 season for eastern residential receptor.
10/11/2011	36	NS	NS		42	10	18		11	NS	NS	25	17	NS	NS	NS	420	18				0.29			2011 Post-Dredge Operation.
9/14/2011	480	NS	NS		120	29	61		93	NS	NS	220	0.62	NS	NS	460	28	57				NS			2011 Hydraulic Dredging in Area N. Sample at Station 62 was tampered and not analyzed.
8/23/2011	280	NS	NS		60	80	94		NS	NS	NS	220/200d	16	NS	NS	1800	48	13				52			2011 Hydraulic Dredging in Area K.
7/26/2011	NS	NS	NS		NS	NS	NS		NS	NS	NS	NS	NS	NS	NS	NS	NS	NS				NS	51		Excavation of Area Q.
7/13/2011	1100	NS	NS		130	40	43		43	NS	NS	78	110	NS	NS	1000/1100d	79	25				6.7	NS		2011 Hydraulic Dredging in Area K.
5/25/2011	56	NS	NS		NS	NS	NS		NS	NS	NS	NS	NS	NS	NS	NS	93/97d	NS				0.68	25		2011 Pre-Dredge Samples; Station 63 is a new location in 2011 season for Area Q.
10/13/2010	80	NS	NS		36	9	7.4		21	NS	NS	24	4.4	NS	NS	NS	19	5.9				1.1	NS		2010 Post Dredge Operation.
8/18/2010	1800	NS	NS		300	25	36		31	NS	NS	130	37	NS	NS	560/580d	200	11				13			2010 Hydraulic Dredging.
7/20/2010	270	NS	NS		29	NS	26		47	NS	NS	79/73d	37.0	NS	NS	450	93	26				2.7			
6/30/2010	120.0	NS	NS		7.3	0.0013	82.0		13	NS	NS	32	3.3	NS	NS	230	3.20	12.0				44/41d			
5/21/2010	86	NS	NS		NS	0.042	NS		NS	NS	NS	NS	NS	NS	NS	NS	NS	NS				ND/NDd			
5/13/2010	void	NS	NA		NS	void	NS		NS	NS	NS	NS	NS	NS	NS	NS	NS	NS				void			2010 pre-dredge samples. Sample location at Century House Resturant (#62) in Acushnet added at the direction of the EPA. Samples taken on 5/13/10 were damaged during shipment.
12/16/2009	3.3	NS	NS		0.134	23.8	9.12		0.171	NS	NS	1.78	NS	0.184	NS	NS	0.372/0.353d	0.63							2009 Post Dredge Operation.
11/9/2009	45.2	NS	NS		20.4/31d	25.3	55.2		32.8	NS	NS	51.8	NS	2.92	NS	205.1	8.31	17.2							2009 Hydraulic Dredging.
10/14/2009	48.79	NS	NS		11.77	17.92	10.01		8.8/6.07d	NS	NS	13.26	NS	3.75	NS	0.13	10.00	2.62							
9/17/2009	160	NS	NS		24	2.2	51		13	NS	NS	35	NS	42	NS	180	14	10/9.8d							
8/13/2009	130	NS	NS		21	14	49		14	NS	NS	32	NS	31	NS	130	28/30d	20							
7/13/2009	130	NS	NS		18	39	110		36	NS	NS	77/76d	NS	5.3	NS	290	7.4	6							
6/16/2009	150	NS	NS		77	10	33		35	43	NS	NS	NS	32	NS	120	33	8.2							

**Table E-1  
Ambient Air Monitoring Program - Total Detectable PCB Homologues  
New Bedford Harbor Superfund Site**

Sampling Date	PCB Concentration by Location (ng/m <sup>3</sup> in 24-hour time-weighted average)																				Activity Period				
	24 Aerovox	25 Manomet	25 Cliftex	27 Porter	30 Fibre Leather	42 NSTAR North	43 Veranda	44 Taber	46 Coffin	Area C			Area D			53 Dredge	55 Aerovox West	56 Acushnet Park	57 Riverside Park	61 South Fence		62 Century House	63 Boathouse	64 Pilgrim	65 LHCC Dredge
											47	48	49	50	51	52									
11/10/2008	NS	NS	NS		NS	NS	15		1.3	NS	NS	6.2	NS	ND	NS	NS	NS	NS	0.11						2008 Post Dredge Operation.
10/7/2008	NS	NS	NS		NS	NS	NS		5.2	NS	NS	NS	NS	NS	NS	NS	NS	NS	NS						2008 Hydraulic Dredging.
9/24/2008	NS	NS	NS		NS	NS	18		NS	NS	NS	42	NS	NS	NS	1.5	NS	NS	15.0						
8/21/2008	NS	NS	NS		NS	NS	31.66		121.94	NS	NS	123.4/116.4d	NS	2.85	NS	178.0	NS	NS	37.46						
7/16/2008	NS	NS	NS		NS	NS			NS	NS	NS	NS	NS	NS	NS	NA	68.6	NS		286.5					2008 Land-Based Excavation of Shoreline at Aerovox. Sample Station 61 - South Fence was used only during the excavation timeframe.
7/8/2008	NS	NS	NS		NS	NS			NS	NS	NS	NS	NS	NS	NS	NA	8.7	NS		26.1					
6/25/2008	NS	NS	NS		NS	NS			NS	NS	NS	NS	NS	NS	NS	NA	5.52	NS		NS					
6/19/2008	NS	NS	NS		NS	NS			NS	NS	NS	NS	NS	NS	NS	NA	8.9	NS		NS					
6/12/2008	NS	NS	NS		NS	NS			NS	NS	NS	NS	NS	NS	NS	NA	7.3	NS		43.1					
6/8/2008	NS	NS	NA		NS	NS			NS	NS	NS	NS	NS	NS	NS	NA	25.9	NS		34.4					
11/9/2007	19.7	NS	20.2		NS	15.7			1.86	9.29	NS	NS	NS	4.39	NS	NA	NS	NS						2007 Post Dredge Operation.	
9/18/2007	176	NS	120		NS	16.3			21.4	57.1	NS	NS	48.7	NS	NS	130	NS	NS						2007 Hydraulic Dredging	
8/21/2007	282	NS	147		NS	19.2			36.1	46.9	NS	NS	36.7	NS	NS	138	NS	NS						2006 Post Dredge Operation.	
11/19/2006	41.1	NS	0.14		NS	NS			4.05	NS	NS	81.4	2.6	NS	NS	NA	NS	NS						2006 Hydraulic Dredging.	
10/6/2006	2,357	NS	451		NS	NS			108	NS	NS	157	NS	NS	197	13430	NS	NS						2005 Post Dredge Operation.	
8/31/2006	1,629	NS	176		NS	NS			70.4	39.2	NS	NS	NS	67.3	NS	2336	NS	NS						2005 Hydraulic Dredging.	
12/29/2005	83.2	NS	10.9		NS	21.4			65.1	7.4	NS	NS	NS	2.2	NS	NA	10.8	13.5						2005 Pre-Dredge Samples.	
11/18/2005	15.9	NS	0.1		NS	63.6			0.1	NS	0.1	3.7	NS	NS	NS	913.0	0.1	3.8						2004 Hydraulic Dredging.	
10/28/2005	15.4	NS	NS		NS	32.3			2.1	NS	4.6	12.3	0.0	NS	NS	505.0	4.0	2.7							
10/6/2005	1822.0	NS	251.0		NS	119.0			130.0	NS	60.1	114.0	81.7	NS	NS	6315.0	222.0	180.0							
9/29/2005	383.0	NS	104.0		NS	5.3			124.0	NS	17.3	44.2	24.2	NS	NS	391.0	87.0	77.9							
9/23/2005	178.0	NS	35.2		NS	83.3			115.0	NS	19.1	97.0	0.3	NS	NS	780.0	2.6	23.9							
9/15/2005	1490.0	NS	58.2		NS	22.5			99.8	NS	14.9	83.6	0.5	NS	NS	1280.0	37.6	102.0						2004 Post Dredge Operation.	
8/11/2005	216.0	NS	103.0		NS	25.9			37.2	NS	NS	29.3	NS	NS	21.3	NA	42.1	49.9						2004 Hydraulic Dredging.	
12/3/2004	30	NS	27		NS	40			15	22	NS	26	22	NS	31	NA	9.33	1.52						Initial MU-2 Dredging During Startup.	
11/5/2004	578	NS	61		NS	73			80	NS	NS	28	NS	NS	NS	351	28.42	39.08							
10/19/2004	559	NS	259		NS	NS			36	47	48	66	17	74	100	704	NS	NS							
9/28/2004	9557	NS	423		NS	NS			342	35	165	207	80	75	115	2734	NS	NS							
9/23/2004	588	NS	97		NS	NS			5	7	10	17	6	5	19	1212	NS	NS							
9/14/2004	1449	NS	229		NS	NS			48	64	64	86	38	39	61	98	NS	NS						No Dredging Activities.	
9/9/2004	1024	NS	167		NS	NS			145	28	37	56	20	16	47	723	NS	NS							
6/29/2004	2286	NS	NS		NS	NS			NS	NS	NS	NS	NS	56	NS		NS	NS							
March-May 2000	76	NS	35		NS	29			35	61	61	61	6.8	6.8	6.8		NS	NS						No Dredging Activities. Data from Foster-Wheeler.	
Dec 1999-Feb 2000	32	NS	3.2		NS	9.9			3.2	89	89	89	3.4	3.4	3.4		NS	NS							
Sept-Nov 1999	67	NS	22		NS	24			22	43	43	43	5.9	5.9	5.9		5.2	5.2							
June-August 1999	130	NS	46		NS	31			46	33	33	33	12	12	12		NS	NS							

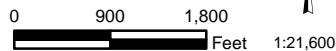
Notes:  
d = field duplicate result  
NA = sample collected but not analyzed  
ng/m<sup>3</sup> = nanograms per cubic meter of air  
NS = not sampled  
PCB = polychlorinated biphenyl  
ND = no detections (non-detect)  
Sample station with gray blocking is a newer station added to the air sampling program or discontinued station (no activity).

Station	Location
24	Aerovox
25	Manomet
27	Porter
30	Fibre Leather
42	NSTAR N
43	Veranda
44	Taber
46	Coffin
47	Area C Downwind
50	Area D Downwind
53	Dredge
56	Acushnet Park
64	Pilgrim



**Legend**

● 2014 Ambient Air Sampling Station Location



**JACOBS**

2014 Ambient Air  
Sampling Station  
Locations

New Bedford Harbor Superfund Site

NAME: jacobus

Date: 1/20/2014

Figure 1

Path: Y:\NBH\Projects\3586076\20140120\Ac-GIS\Fig1\_ambient\_samplng\_stations2014.mxd