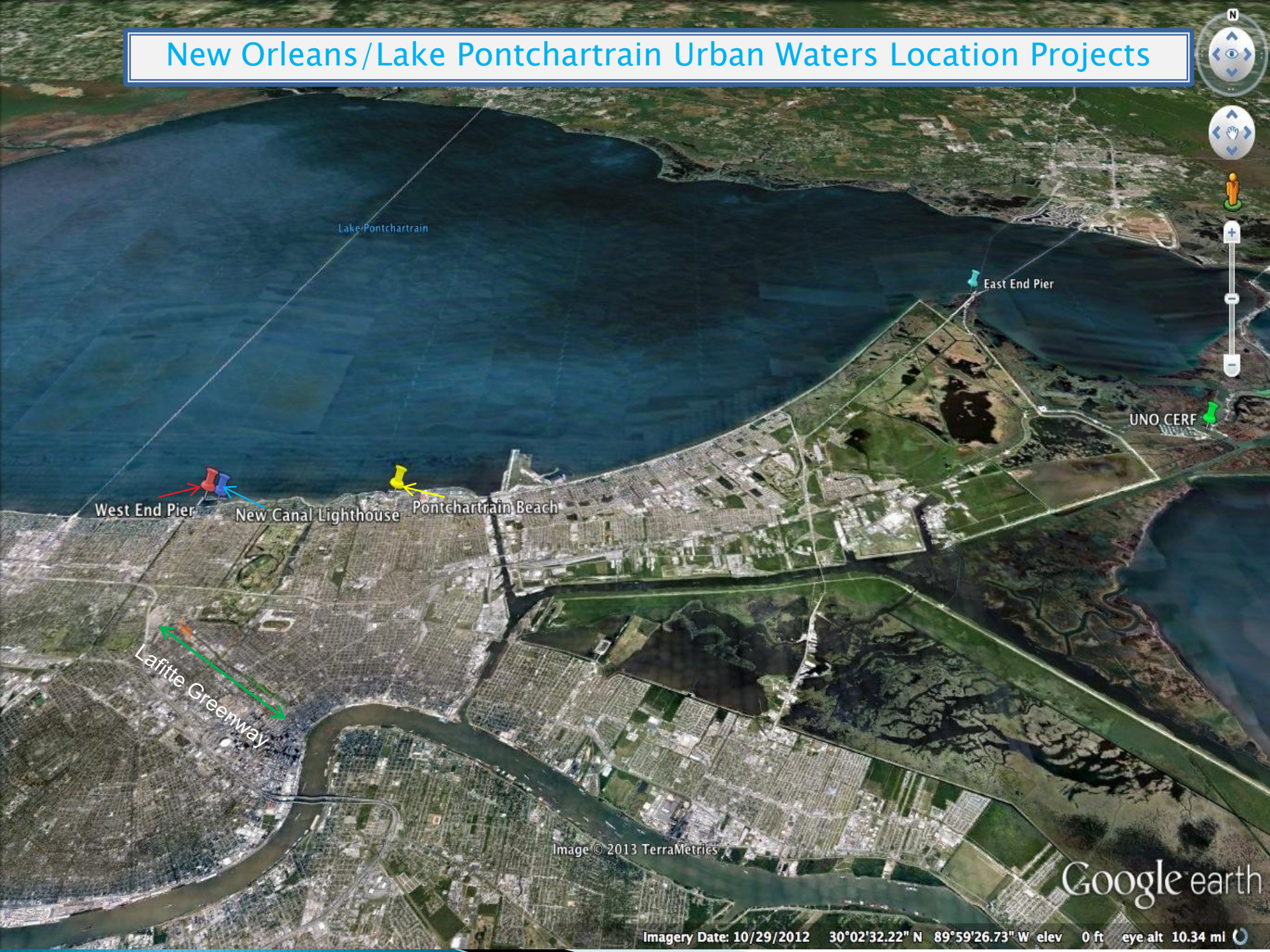




New Orleans / Lake Pontchartrain Urban Waters Partnership Meeting

October 30, 2013

New Orleans/Lake Pontchartrain Urban Waters Location Projects



Lake Pontchartrain

East End Pier

UNO CERF

West End Pier

New Canal Lighthouse

Pontchartrain Beach

Lafitte Greenway

Image © 2013 TerraMetrics

Google earth

Imagery Date: 10/29/2012 30°02'32.22" N 89°59'26.73" W elev 0 ft eye alt 10.34 mi

Project Status Updates

East End Area: Pier Conceptual Designs



East End Area



East End Recreational and Restoration Area

Discussion Summary:

- ▶ Ducks unlimited as partner?
- ▶ Irish Bayou community as partner?
- ▶ Kayak club/lots of users? (Andrea and Jerry could help w/ names)
- ▶ Haystackers?
- ▶ Move closer to crabbing bridge and on NWR land
- ▶ Check in w/ St Tammany on their bridge (Charles)



East End Area

Year 3 Activities:

- ▶ #1 – location of facility
- ▶ Continue funding lines
- ▶ Engage potential community partners for fundraising and management strategy of facility



UNO CERF



Credit Urban Conservancy (Dana Eness)



UNO CERF

Discussion Summary:

- ▶ Lost boat captain and LDWF boat (temporarily stored elsewhere due to TS Karen) – moved back to LDWF for now
- ▶ 2 other full-time staff lost – down to 1 staff (Dinah)
- ▶ Ioannis new Director of PIES
- ▶ New discussions for potential collaboration w/ Robert Twilley at La Sea Grant
- ▶ Growing need for water quality monitoring/lab capabilities – CERF prime candidate to support these activities
 - issue is need staff to support – have lab space



UNO CERF

Year 3:

- ▶ Engage Ioannis and revisit vision plan discussions w/ NPS
- ▶ Explore partnerships w/ CSX (Dinah)
- ▶ Letter of support from EPA/Urban Waters – potential for other partners (e.g. Urban Conservancy) to provide letters too
- ▶ Land Trust for Louisiana willing to partner w/ Dinah on restoration grants, etc.



West End Pier

Discussion Summary:

- ▶ Master Plan (MP) developed to address zoning and commercial
 - Serves as roadmap for potential of harbor rather than just rebuilding what was there before (more resilient, etc.)
 - MP can be found on RPC website
- ▶ MP calls for dredging harbor – material could be used beneficially for shoreline protection as well as filtering pump station discharge:
 - need \$\$s to place beneficially
 - USACE work will also create material that could be used beneficially
- ▶ USACE has ROW to parking lot for next few years as part of pump station construction



West End Pier

Discussion Summary cont'd:

- ▶ Submitted request for floating dock to FEMA hazard mitigation ~ 4 to 6 weeks ago – no response to date

Year 3:

- ▶ EPA engage FEMA on response times and support
- ▶ Explore shoreline restoration along problem–area of parking lot (funding source?)
- ▶ NOAA Restoration Center available for technical support of dredged material placement (Mel)
- ▶ Jerry Boos invite to MS BUD group



New Canal Lighthouse

Discussion Summary:

- ▶ Finalizing front lawn w/ donor support
- ▶ Bulk head evaluated and determined to be sound
- ▶ Exploring bike component (i.e., connecting Lighthouse to Pontchartrain Beach and West End – looking for \$\$\$ – got small grant for rack)
- ▶ Went from 3 to 5 days for tours due to demand



Credit NPS (Stacye Palmer-McBride)

New Canal Lighthouse

Discussion Summary:

- ▶ Dock – successfully pursuing FEMA Isaac \$\$\$
- ▶ Need \$130K – \$150K for dock repairs (ADA compliant)

Year 3:

- ▶ Art to check if ADA/DOJ funding assistance exists
- ▶ ID \$\$\$ to tie bike path – reach out to OLD, Bike Easy, NO Cycling Club, etc

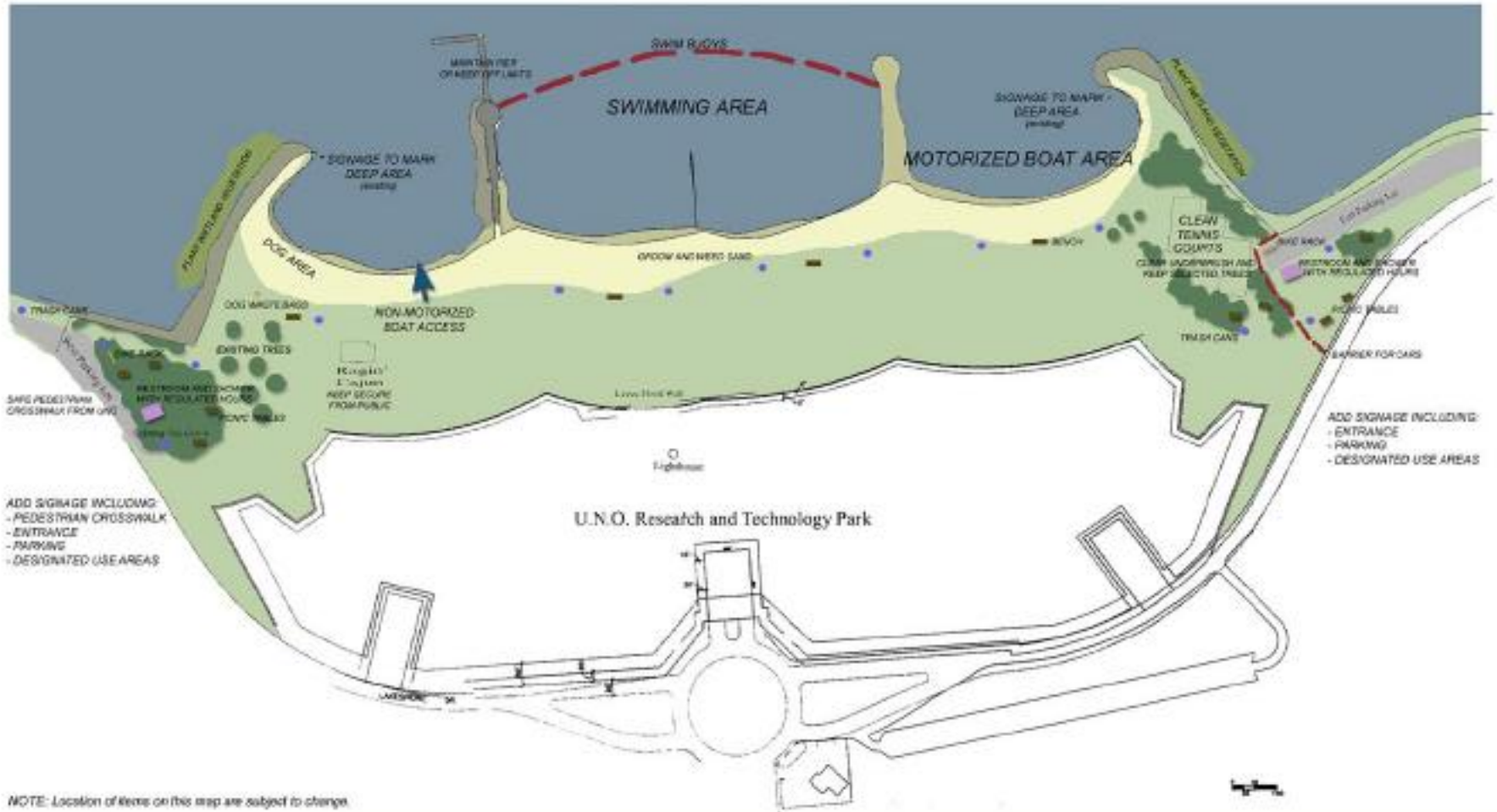


Credit NPS (Stacye Palmer-McBride)

Pontchartrain Pier/Beach

Figure 2. Basic Conceptual Design

PONTCHARTRAIN BEACH CONCEPTUAL DESIGN BASIC IMPROVEMENTS



NOTE: Location of items on this map are subject to change.

Pontchartrain Pier/Beach

Discussion Summary:

- ▶ LPBF meeting w/ Board – some small seed \$\$s – concerns w/ liability, etc.

Year 3:

- ▶ FEMA PW/\$\$s resolution
- ▶ Pursue small grants for signage etc. to increase awareness



Lafitte Greenway



Tour with River Revitalization Foundation,
September 2013



Lafitte Greenway

Discussion Summary:

- ▶ Funding opportunities for climate adaptation?
 - potential NFWF (w/ EPA and FS) funding on the horizon
- ▶ NSF funding to be announced soon

Year 3:

- ▶ Finalize Management Strategy
- ▶ Continue support on Norfolk Southern ROW issue

