

EDEN NORTH CAROLINA COAL ASH SPILL SURFACE WATER RESULTS

NOTE: The data below represents surface water samples that were collected on April 10, 2014 by EPA START (Team 1) sampling teams. Water sample measurements are in milligrams per liter (mg/L) and/or micrograms per liter (µg/L) for these samples. The data is being compared to EPA ecological risk screening levels (ERSLs) to protect aquatic life in the surface water of the Dan River. Specific qualifiers and footnotes are listed below the summary table. These samples were collected at various locations along the river (refer to map for generalized locations). The detected concentrations in surface water are all below the EPA ERSLs with the exception of aluminum, copper, iron, and lead. EPA typically screens the surface water concentrations using total metals samples, because this is a conservative practice for screening. Copper, iron, and lead were not detected above screening levels in any of the samples of the dissolved fraction of surface water (i.e., samples that were filtered to remove particulates), therefore there is no threat of toxicity from these compounds to aquatic organisms. When chemical concentrations exceed the screening values it doesn't mean there will be adverse health or ecological effects, but recommends further investigation may be needed.

Analyte	Ecological Screening Standard for Surface Water Samples ¹		Leaksville Boat Access Dock		DRSS Boat Ramp		Hwy 700	
Sample Information								
Sample ID	-		EDEN-LBA-R-SW-20140410		EDEN-DUKE-L-SW-20140410		EDEN-HW700-C-SW-20140410	
Date	-		04/10/2014		04/10/2014		04/10/2014	
Time	-		1400		1243		1213	
Status	-		Validation Complete		Validation Complete		Validation Complete	
Type	-		Surface Water		Surface Water		Surface Water	
Dissolved metals								
Aluminum	87	µg/L	176	µg/L	20U	µg/L	20U	µg/L
Antimony	5.6	µg/L	5U	µg/L	5U	µg/L	5U	µg/L
Arsenic	10	µg/L	0.143J	µg/L	0.112J	µg/L	4.5U	µg/L
Barium	220	µg/L	17.1	µg/L	15.7	µg/L	16.7	µg/L
Beryllium	0.66	µg/L	0.65U	µg/L	0.65U	µg/L	0.65U	µg/L
Boron	0.36	mg/L	0.05U	mg/L	0.05U	mg/L	0.05U	mg/L
Cadmium	0.1	µg/L	0.1U	µg/L	0.1U	µg/L	0.1U	µg/L
Calcium	-	-	4,560J	µg/L	5,090	µg/L	5,150	µg/L
Chromium	25	µg/L	0.352J	µg/L	0.117J	µg/L	0.138J	µg/L
Cobalt	3	µg/L	5U	µg/L	0.178J	µg/L	0.189J	µg/L
Copper	3	µg/L	2U	µg/L	2U	µg/L	2U	µg/L
Iron	1,000	µg/L	317	µg/L	75.6J	µg/L	72.7J	µg/L
Lead	0.59	µg/L	0.125J	µg/L	0.5U	µg/L	0.5U	µg/L
Magnesium	-	-	1,880J	µg/L	2,290J	µg/L	2,230J	µg/L
Manganese	200	µg/L	7.94	µg/L	11.2	µg/L	7	µg/L
Mercury	0.000012	mg/L	0.0002U	mg/L	0.0002U	mg/L	0.0002U	mg/L
Molybdenum	800	µg/L	5U	µg/L	5U	µg/L	5U	µg/L
Nickel	17	µg/L	0.348J	µg/L	0.299J	µg/L	0.276J	µg/L
Potassium	53,000	µg/L	1,710J	µg/L	1,470J	µg/L	1,580J	µg/L
Selenium	5	µg/L	4.5U	µg/L	4.5U	µg/L	4.5U	µg/L
Silver	0.06	µg/L	0.05U	µg/L	0.05U	µg/L	0.05U	µg/L
Sodium	680,000	µg/L	3,680J	µg/L	3,740J	µg/L	3,750J	µg/L
Thallium	0.24	µg/L	0.2U	µg/L	0.2U	µg/L	0.2U	µg/L
Vanadium	27	µg/L	0.803J	µg/L	0.42J	µg/L	0.428J	µg/L
Zinc	39	µg/L	10U	µg/L	10U	µg/L	10U	µg/L

**EDEN NORTH CAROLINA COAL ASH SPILL
SURFACE WATER RESULTS**

Analyte	Ecological Screening Standard for Surface Water Samples ¹		Leaksville Boat Access Dock		DRSS Boat Ramp		Hwy 700	
Sample Information								
Sample ID	-		EDEN-LBA-R-SW-20140410		EDEN-DUKE-L-SW-20140410		EDEN-HW700-C-SW-20140410	
Date	-		04/10/2014		04/10/2014		04/10/2014	
Time	-		1400		1243		1213	
Status	-		Validation Complete		Validation Complete		Validation Complete	
Type	-		Surface Water		Surface Water		Surface Water	
Total Dissolved Solids								
Total Dissolved Solids	-	-	50	mg/L	51	mg/L	30	mg/L
Total Suspended Solids								
Total Suspended Solids	-	-	31.5	mg/L	4J	mg/L	29	mg/L
Total Metals								
Aluminum	2,000	µg/L	1,100	µg/L	822	µg/L	1,010	µg/L
Antimony	5.6	µg/L	0.919J	µg/L	0.873J	µg/L	0.941J	µg/L
Arsenic	10	µg/L	0.311J	µg/L	4.5U	µg/L	0.303J	µg/L
Barium	220	µg/L	26.8	µg/L	24.6	µg/L	26.5	µg/L
Beryllium	0.66	µg/L	0.65U	µg/L	0.65U	µg/L	0.65U	µg/L
Boron	0.36	mg/L	0.05U	mg/L	0.05U	mg/L	0.05U	mg/L
Cadmium	2	µg/L	0.1U	µg/L	0.1U	µg/L	0.1U	µg/L
Calcium	-	-	4,830J	µg/L	5,370	µg/L	5,280	µg/L
Chromium	29	µg/L	2.5U	µg/L	2.5U	µg/L	2.5U	µg/L
Cobalt	24	µg/L	0.644J	µg/L	0.667J	µg/L	0.749J	µg/L
Copper	3	µg/L	1.72J	µg/L	1.6J	µg/L	2.24	µg/L
Iron	2,300	µg/L	1,710	µg/L	2,360	µg/L	1,990	µg/L
Lead	0.6	µg/L	1.17	µg/L	0.794	µg/L	0.963	µg/L
Magnesium	-	-	2,000J	µg/L	2,430J	µg/L	2,300J	µg/L
Manganese	200	µg/L	42.4	µg/L	61.8	µg/L	59.6	µg/L
Mercury	0.000012	mg/L	0.0002U	mg/L	0.0002U	mg/L	0.0002U	mg/L
Molybdenum	-	-	0.52J	µg/L	5U	µg/L	0.223J	µg/L
Nickel	17	µg/L	0.912J	µg/L	0.912J	µg/L	1.03J	µg/L
Potassium	53,000	µg/L	1,660J	µg/L	1,480J	µg/L	1,510J	µg/L
Selenium	5	µg/L	4.5U	µg/L	4.5U	µg/L	4.5U	µg/L
Silver	0.06	µg/L	0.05U	µg/L	0.05U	µg/L	0.05U	µg/L
Sodium	680,000	µg/L	3,730J	µg/L	3,740J	µg/L	3,640J	µg/L
Thallium	0.24	µg/L	0.105J	µg/L	0.2U	µg/L	0.023J	µg/L
Vanadium	27	µg/L	2.16J	µg/L	2.65J	µg/L	2.84J	µg/L
Zinc	39	µg/L	10U	µg/L	10U	µg/L	10U	µg/L
Anions								
Bromide	-	-	1U	mg/L	1U	mg/L	1U	mg/L
Chloride	230	mg/L	4.24	mg/L	3.93	mg/L	4.52	mg/L
Sulfate	-	-	4.84	mg/L	5.34	mg/L	5.17	mg/L

EDEN NORTH CAROLINA COAL ASH SPILL SURFACE WATER RESULTS

Analyte	Ecological Screening Standard for Surface Water Samples ¹		Leaksville Boat Access Dock		DRSS Boat Ramp		Hwy 700	
Sample Information								
Sample ID	-		EDEN-LBA-R-SW-20140410		EDEN-DUKE-L-SW-20140410		EDEN-HW700-C-SW-20140410	
Date	-		04/10/2014		04/10/2014		04/10/2014	
Time	-		1400		1243		1213	
Status	-		Validation Complete		Validation Complete		Validation Complete	
Type	-		Surface Water		Surface Water		Surface Water	
Wet Chemistry								
Alkalinity, Total (As CaCO ₃)	-	-	13.7	mg/L	18.8	mg/L	18.4	mg/L
Hardness, Calcium/Magnesium (As CaCO ₃)	-	-	20.3	mg/L	23.4	mg/L	22.6	mg/L
Organic Carbon, Dissolved	-	-	3.33	mg/L	2.28	mg/L	2.48	mg/L
pH	6.5 - 9.0		std	6.89J	std	6.93J	std	6.87J

Notes

¹ Value obtained from the GL Tier 2 Values; National Recommended Water Quality Criteria; Suter and Tsao (1996); Reference condition for EcoRegion XI (25 percentile); NCDENR State Standards for surface water

°C degrees Celsius

EPA U.S. Environmental Protection Agency

J Value is estimated

J+ Value is estimated with a possible high bias

J- Value is estimated with a possible low bias

µg/L micrograms per liter

mg/L milligrams per liter

std standard

U Analyte was not detected at the listed reporting limit.

**EDEN NORTH CAROLINA COAL ASH SPILL
SURFACE WATER RESULTS**

Analyte	Ecological Screening Standard for Surface Water Samples ¹		Hwy 880		Abreu-Grogan Park Boat Dock		Abreu-Grogan Park Boat Dock	
Sample Information								
Sample ID	-		EDEN-BHB-C-SW-20140410		EDEN-DWTP-RAW-3-20140410		EDEN-DANIN-R-SW-20140410	
Date	-		04/10/2014		04/10/2014		04/10/2014	
Time	-		1143		0852		1105	
Status	-		Validation Complete		Validation Complete		Validation Complete	
Type	-		Surface Water		Surface Water		Surface Water	
Dissolved metals								
Aluminum	87	µg/L	20U	µg/L	219	µg/L	20U	µg/L
Antimony	5.6	µg/L	5U	µg/L	5U	µg/L	5U	µg/L
Arsenic	10	µg/L	0.252J	µg/L	0.346J	µg/L	0.27J	µg/L
Barium	220	µg/L	18.3	µg/L	19.2	µg/L	19.9	µg/L
Beryllium	0.66	µg/L	0.65U	µg/L	0.65U	µg/L	0.65U	µg/L
Boron	0.36	mg/L	0.106	mg/L	0.0632J+	mg/L	0.0855J+	mg/L
Cadmium	0.1	µg/L	0.1U	µg/L	0.024J	µg/L	0.1U	µg/L
Calcium	-	-	5,470	µg/L	5,290	µg/L	5,320	µg/L
Chromium	25	µg/L	0.26J	µg/L	0.501J	µg/L	0.169J	µg/L
Cobalt	3	µg/L	0.188J	µg/L	5U	µg/L	0.201J	µg/L
Copper	3	µg/L	2U	µg/L	2U	µg/L	2U	µg/L
Iron	1,000	µg/L	89.5J	µg/L	425	µg/L	83.1J	µg/L
Lead	0.59	µg/L	0.5U	µg/L	0.177J	µg/L	0.5U	µg/L
Magnesium	-	-	2,400J	µg/L	2,250J	µg/L	2,270J	µg/L
Manganese	200	µg/L	5.32	µg/L	4.8J	µg/L	7.3	µg/L
Mercury	0.000012	mg/L	0.0002U	mg/L	0.0002U	mg/L	0.0002U	mg/L
Molybdenum	800	µg/L	5U	µg/L	5U	µg/L	5U	µg/L
Nickel	17	µg/L	0.316J	µg/L	0.407J	µg/L	0.327J	µg/L
Potassium	53,000	µg/L	1,660J	µg/L	1,840J	µg/L	1,800J	µg/L
Selenium	5	µg/L	4.5U	µg/L	4.5U	µg/L	0.41J	µg/L
Silver	0.06	µg/L	0.027J	µg/L	0.024J	µg/L	0.05U	µg/L
Sodium	680,000	µg/L	3,810J	µg/L	3,850J	µg/L	3,800J	µg/L
Thallium	0.24	µg/L	0.018J	µg/L	0.054J	µg/L	0.2U	µg/L
Vanadium	27	µg/L	0.46J	µg/L	1.05J	µg/L	0.52J	µg/L
Zinc	39	µg/L	10U	µg/L	10U	µg/L	10U	µg/L

**EDEN NORTH CAROLINA COAL ASH SPILL
SURFACE WATER RESULTS**

Analyte	Ecological Screening Standard for Surface Water Samples ¹		Hwy 880		Abreu-Grogan Park Boat Dock		Abreu-Grogan Park Boat Dock	
Sample Information								
Sample ID	-		EDEN-BHB-C-SW-20140410		EDEN-DWTP-RAW-3-20140410		EDEN-DANIN-R-SW-20140410	
Date	-		04/10/2014		04/10/2014		04/10/2014	
Time	-		1143		0852		1105	
Status	-		Validation Complete		Validation Complete		Validation Complete	
Type	-		Surface Water		Surface Water		Surface Water	
Total Dissolved Solids								
Total Dissolved Solids	-	-	72	mg/L	72	mg/L	74	mg/L
Total Suspended Solids								
Total Suspended Solids	-	-	35.5	mg/L	4.5J	mg/L	23.5	mg/L
Total Metals								
Aluminum	2,000	µg/L	1,180	µg/L	1,490	µg/L	1,130	µg/L
Antimony	5.6	µg/L	1.08J	µg/L	0.924J	µg/L	0.978J	µg/L
Arsenic	10	µg/L	0.574J	µg/L	0.428J	µg/L	0.382J	µg/L
Barium	220	µg/L	30.5	µg/L	33.5	µg/L	28.6	µg/L
Beryllium	0.66	µg/L	0.134J	µg/L	0.112J	µg/L	0.65U	µg/L
Boron	0.36	mg/L	0.115	mg/L	0.0698J+	mg/L	0.0872J+	mg/L
Cadmium	2	µg/L	0.053J	µg/L	0.027J	µg/L	0.1U	µg/L
Calcium	-	-	5,730	µg/L	5,480	µg/L	5,510	µg/L
Chromium	29	µg/L	2.71J+	µg/L	2.96J+	µg/L	2.5U	µg/L
Cobalt	24	µg/L	0.937J	µg/L	0.864J	µg/L	0.572J	µg/L
Copper	3	µg/L	2.58	µg/L	2.43	µg/L	1.84J	µg/L
Iron	2,300	µg/L	2,710	µg/L	809	µg/L	2,350	µg/L
Lead	0.6	µg/L	1.18	µg/L	1.36	µg/L	0.986	µg/L
Magnesium	-	-	2,540J	µg/L	2,270J	µg/L	2,340J	µg/L
Manganese	200	µg/L	58.7	µg/L	52.8	µg/L	35.8	µg/L
Mercury	0.000012	mg/L	0.0002U	mg/L	0.0002U	mg/L	0.0002U	mg/L
Molybdenum	-	-	1.56J	µg/L	0.513J	µg/L	0.705J	µg/L
Nickel	17	µg/L	1.19J	µg/L	1.31J	µg/L	0.955J	µg/L
Potassium	53,000	µg/L	1,640J	µg/L	1,700J	µg/L	1,730J	µg/L
Selenium	5	µg/L	0.803J	µg/L	4.5U	µg/L	4.5U	µg/L
Silver	0.06	µg/L	0.032J	µg/L	0.044J	µg/L	0.05U	µg/L
Sodium	680,000	µg/L	3,760J	µg/L	3,820J	µg/L	3,730J	µg/L
Thallium	0.24	µg/L	0.2U	µg/L	0.072J	µg/L	0.2U	µg/L
Vanadium	27	µg/L	3.28J	µg/L	3.55J	µg/L	2.94J	µg/L
Zinc	39	µg/L	10U	µg/L	10U	µg/L	10U	µg/L
Anions								
Bromide	-	-	1U	mg/L	1U	mg/L	1U	mg/L
Chloride	230	mg/L	5.78	mg/L	6.04	mg/L	6.07	mg/L
Sulfate	-	-	5.4	mg/L	6.02	mg/L	5.86	mg/L

EDEN NORTH CAROLINA COAL ASH SPILL SURFACE WATER RESULTS

Analyte	Ecological Screening Standard for Surface Water Samples ¹		Hwy 880		Abreu-Grogan Park Boat Dock		Abreu-Grogan Park Boat Dock	
Sample Information								
Sample ID	-		EDEN-BHB-C-SW-20140410		EDEN-DWTP-RAW-3-20140410		EDEN-DANIN-R-SW-20140410	
Date	-		04/10/2014		04/10/2014		04/10/2014	
Time	-		1143		0852		1105	
Status	-		Validation Complete		Validation Complete		Validation Complete	
Type	-		Surface Water		Surface Water		Surface Water	
Wet Chemistry								
Alkalinity, Total (As CaCO ₃)	-	-	16.8	mg/L	14.1	mg/L	14.9	mg/L
Hardness, Calcium/Magnesium (As CaCO ₃)	-	-	24.8	mg/L	23	mg/L	23.4	mg/L
Organic Carbon, Dissolved	-	-	2.95	mg/L	3.61	mg/L	3.59	mg/L
pH	6.5 - 9.0		std	6.79J	std	6.82J	std	6.7J

Notes

¹ Value obtained from the GL Tier 2 Values; National Recommended Water Quality Criteria; Suter and Tsao (1996); Reference condition for EcoRegion XI (25 percentile); NCDENR State Standards for surface water

°C degrees Celsius

EPA U.S. Environmental Protection Agency

J Value is estimated

J+ Value is estimated with a possible high bias

J- Value is estimated with a possible low bias

µg/L micrograms per liter

mg/L milligrams per liter

std standard

U Analyte was not detected at the listed reporting limit.

**EDEN NORTH CAROLINA COAL ASH SPILL
SURFACE WATER RESULTS**

Analyte	Ecological Screening Standard for Surface Water Samples ¹		Hwy 58		S Boston WTP Intake		Hwy 360	
Sample Information								
Sample ID	-		EDEN-HW58-C-SW-20140410		EDEN-SBWTP-RAW-3-20140410		EDEN-HW360-SW-20140410	
Date	-		04/10/2014		04/10/2014		04/10/2014	
Time	-		0915		2102		0950	
Status	-		Validation Complete		Validation Complete		Validation Complete	
Type	-		Surface Water		Surface Water		Surface Water	
Dissolved metals								
Aluminum	87	µg/L	20.7	µg/L	250	µg/L	20.5J+	µg/L
Antimony	5.6	µg/L	5U	µg/L	5U	µg/L	5U	µg/L
Arsenic	10	µg/L	0.183J	µg/L	4.5U	µg/L	4.5U	µg/L
Barium	220	µg/L	20.6	µg/L	21.7	µg/L	20.4	µg/L
Beryllium	0.66	µg/L	0.65U	µg/L	0.65U	µg/L	0.65U	µg/L
Boron	0.36	mg/L	0.05U	mg/L	0.0528J+	mg/L	0.05U	mg/L
Cadmium	0.1	µg/L	0.1U	µg/L	0.1U	µg/L	0.1U	µg/L
Calcium	-	-	5,120	µg/L	5,410	µg/L	4,860J	µg/L
Chromium	25	µg/L	0.206J	µg/L	0.53J	µg/L	0.179J	µg/L
Cobalt	3	µg/L	0.21J	µg/L	5U	µg/L	0.222J	µg/L
Copper	3	µg/L	2U	µg/L	2U	µg/L	2.47J+	µg/L
Iron	1,000	µg/L	100	µg/L	647	µg/L	99.1J	µg/L
Lead	0.59	µg/L	0.13J	µg/L	0.219J	µg/L	0.137J	µg/L
Magnesium	-	-	2,160J	µg/L	2,130J	µg/L	2,050J	µg/L
Manganese	200	µg/L	6.02	µg/L	3.42J	µg/L	4.94J	µg/L
Mercury	0.000012	mg/L	0.0002U	mg/L	0.0002U	mg/L	0.0002U	mg/L
Molybdenum	800	µg/L	5U	µg/L	5U	µg/L	5U	µg/L
Nickel	17	µg/L	0.375J	µg/L	0.345J	µg/L	0.394J	µg/L
Potassium	53,000	µg/L	2,030J	µg/L	2,030J+	µg/L	2,030J	µg/L
Selenium	5	µg/L	4.5U	µg/L	4.5U	µg/L	4.5U	µg/L
Silver	0.06	µg/L	0.05U	µg/L	0.05U	µg/L	0.05U	µg/L
Sodium	680,000	µg/L	5,620	µg/L	5,390	µg/L	5,010	µg/L
Thallium	0.24	µg/L	0.016J	µg/L	0.2U	µg/L	0.2U	µg/L
Vanadium	27	µg/L	0.553J	µg/L	1.23J	µg/L	0.585J	µg/L
Zinc	39	µg/L	37.3J	µg/L	2.8J	µg/L	3.08J	µg/L

**EDEN NORTH CAROLINA COAL ASH SPILL
SURFACE WATER RESULTS**

Analyte	Ecological Screening Standard for Surface Water Samples ¹		Hwy 58		S Boston WTP Intake		Hwy 360	
Sample Information								
Sample ID	-		EDEN-HW58-C-SW-20140410		EDEN-SBWTP-RAW-3-20140410		EDEN-HW360-SW-20140410	
Date	-		04/10/2014		04/10/2014		04/10/2014	
Time	-		0915		2102		0950	
Status	-		Validation Complete		Validation Complete		Validation Complete	
Type	-		Surface Water		Surface Water		Surface Water	
Total Dissolved Solids								
Total Dissolved Solids	-	-	75	mg/L	86	mg/L	98	mg/L
Total Suspended Solids								
Total Suspended Solids	-	-	60	mg/L	80	mg/L	79	mg/L
Total Metals								
Aluminum	2,000	µg/L	2,200	µg/L	2,310	µg/L	3,000	µg/L
Antimony	5.6	µg/L	0.905J	µg/L	5U	µg/L	0.943J	µg/L
Arsenic	10	µg/L	0.644J	µg/L	0.412J	µg/L	0.539J	µg/L
Barium	220	µg/L	39.7	µg/L	43.4	µg/L	44.4	µg/L
Beryllium	0.66	µg/L	0.153J	µg/L	0.174J	µg/L	0.192J	µg/L
Boron	0.36	mg/L	0.05U	mg/L	0.0597J+	mg/L	0.05U	mg/L
Cadmium	2	µg/L	0.1U	µg/L	0.1U	µg/L	0.1U	µg/L
Calcium	-	-	5,260	µg/L	6,020	µg/L	5,130	µg/L
Chromium	29	µg/L	4.46	µg/L	4.47	µg/L	5.74	µg/L
Cobalt	24	µg/L	1.3J	µg/L	1.53J	µg/L	1.66J	µg/L
Copper	3	µg/L	3.42	µg/L	3.42	µg/L	4.29	µg/L
Iron	2,300	µg/L	815	µg/L	5,630	µg/L	1,090	µg/L
Lead	0.6	µg/L	2.17	µg/L	2.6	µg/L	2.77	µg/L
Magnesium	-	-	2,180J	µg/L	2,800J	µg/L	2,100J	µg/L
Manganese	200	µg/L	89.2	µg/L	112	µg/L	108	µg/L
Mercury	0.000012	mg/L	0.0002U	mg/L	0.0002U	mg/L	0.0002U	mg/L
Molybdenum	-	-	0.286J	µg/L	5U	µg/L	0.361J	µg/L
Nickel	17	µg/L	1.84J	µg/L	1.76J	µg/L	2.35J	µg/L
Potassium	53,000	µg/L	1,880J	µg/L	1,970J+	µg/L	1,900J	µg/L
Selenium	5	µg/L	4.5U	µg/L	4.5U	µg/L	0.379J	µg/L
Silver	0.06	µg/L	0.05U	µg/L	0.05U	µg/L	0.05U	µg/L
Sodium	680,000	µg/L	5,450	µg/L	6,160J+	µg/L	4,930J	µg/L
Thallium	0.24	µg/L	0.051J	µg/L	0.062J	µg/L	0.071J	µg/L
Vanadium	27	µg/L	7.3	µg/L	6.6	µg/L	9.52	µg/L
Zinc	39	µg/L	10UJ	µg/L	16.7	µg/L	10.2J+	µg/L
Anions								
Bromide	-	-	1U	mg/L	1U	mg/L	1U	mg/L
Chloride	230	mg/L	7.65	mg/L	7.59	mg/L	6.65	mg/L
Sulfate	-	-	6.32	mg/L	6.45	mg/L	5.89	mg/L

EDEN NORTH CAROLINA COAL ASH SPILL SURFACE WATER RESULTS

Analyte	Ecological Screening Standard for Surface Water Samples ¹		Hwy 58		S Boston WTP Intake		Hwy 360	
Sample Information								
Sample ID	-		EDEN-HW58-C-SW-20140410		EDEN-SBWTP-RAW-3-20140410		EDEN-HW360-SW-20140410	
Date	-		04/10/2014		04/10/2014		04/10/2014	
Time	-		0915		2102		0950	
Status	-		Validation Complete		Validation Complete		Validation Complete	
Type	-		Surface Water		Surface Water		Surface Water	
Wet Chemistry								
Alkalinity, Total (As CaCO ₃)	-	-	12.7	mg/L	15.6	mg/L	11.3	mg/L
Hardness, Calcium/Magnesium (As CaCO ₃)	-	-	22.1	mg/L	26.6	mg/L	21.5	mg/L
Organic Carbon, Dissolved	-	-	5.26	mg/L	4.8	mg/L	6.24	mg/L
pH	6.5 - 9.0		std	6.62J	std	6.62J	std	6.61J

Notes

¹ Value obtained from the GL Tier 2 Values; National Recommended Water Quality Criteria; Suter and Tsao (1996); Reference condition for EcoRegion XI (25 percentile); NCDENR State Standards for surface water

°C degrees Celsius

EPA U.S. Environmental Protection Agency

J Value is estimated

J+ Value is estimated with a possible high bias

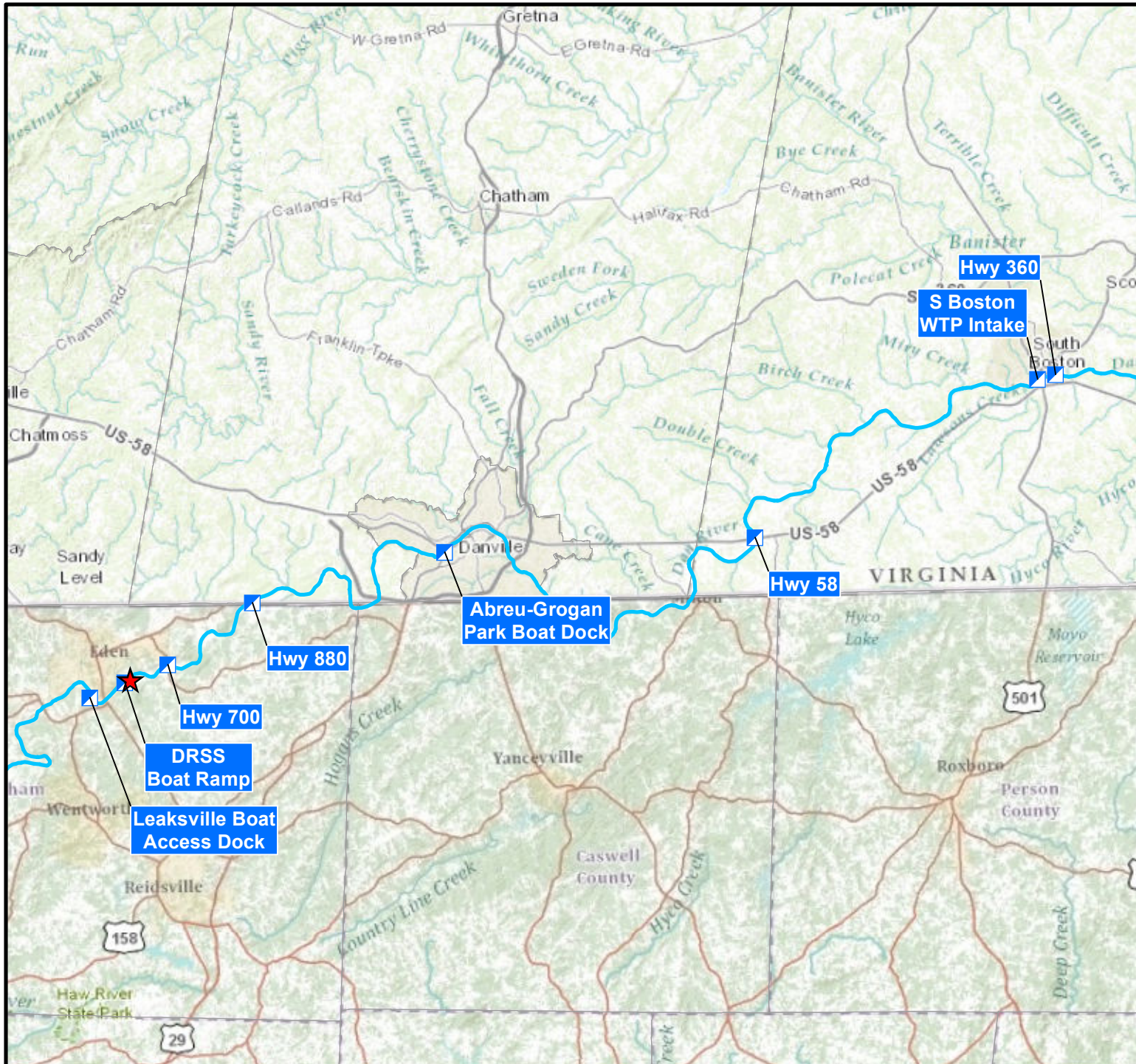
J- Value is estimated with a possible low bias

µg/L micrograms per liter

mg/L milligrams per liter

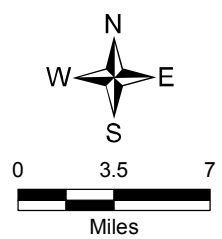
std standard

U Analyte was not detected at the listed reporting limit.



Legend

- ★ Approximate Spill Location
- Surface Water Sample Location
- Dan River



Map Source: ArcGIS Online World Map Topo, 2014

Surface Water Sample Locations
April 10, 2014

