

Manufacturer: MeadWestvaco (MWV): Calmar Home & Garden Packaging SBU
Model: Mixor HP
ASTM Type: IXB (1)

Description:

The package consists of a plastic one-piece continuously-threaded closure and a trigger spray pump (Figure 1). The trigger sprayer closure is permanently attached to the container by continuous threading and engagement of matching ratchets on the closure and the two sets of ratchets on the container. (See arrow to ratchets on the closure and the bottle in Figures 2 A and B).



Figure 1

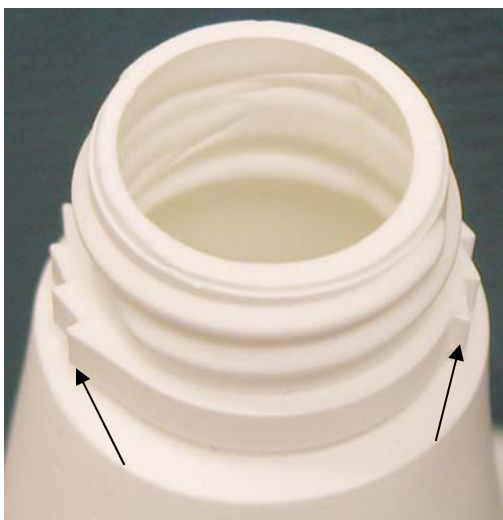


Figure 2A

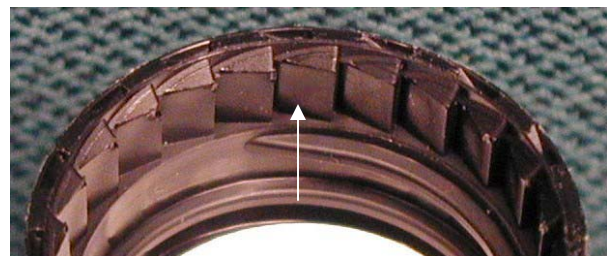


Figure 2B

The trigger's square shaped nozzle (Figure 3) has 4 positions, two off positions indicated by the symbol "X" (Figure 4) that are located 180° apart and two spray positions indicated by a spray pattern "❖❖❖❖" (Figure 5) that are also located 180° apart. The trigger sprayer is operated by pressing and holding down the rectangular tab (aqua arrow in Figure 4), rotating the nozzle from the off position to the spraying position, and then squeezing the trigger. The tab does not lock into the cutout on the nozzle in the spray position, allowing the nozzle to be moved from the spray position to the off position without pressing the tab. Once in the off position, the nozzle is locked into place by means of the rectangular tab located on the trigger shroud (aqua arrow in Figure 4) that locks into a square cutout on the nozzle.



Figure 3



Figure 4



Figure 5

The instructions are below (Figures 4 and 5):

(An arrow pointing to the tab)
Press tab &
twist to open