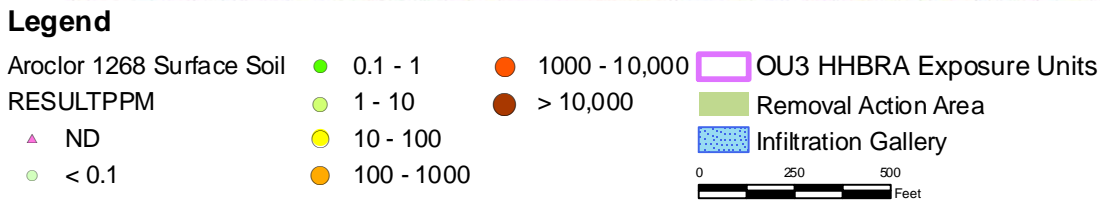




**Figure 1. Locations of EPA Upland Soil Samples for Dioxin/Furans**

**Legend**

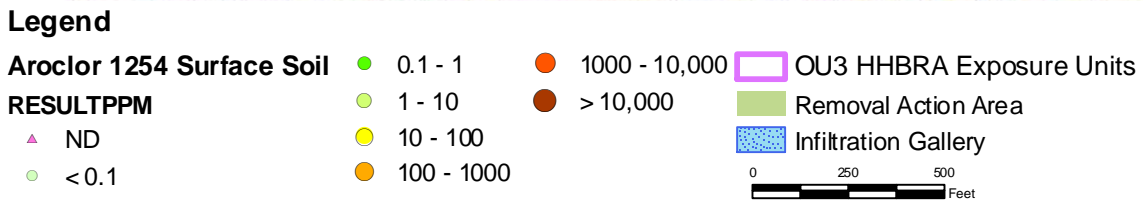
- 1995 Upland Dioxin Sampling Locations



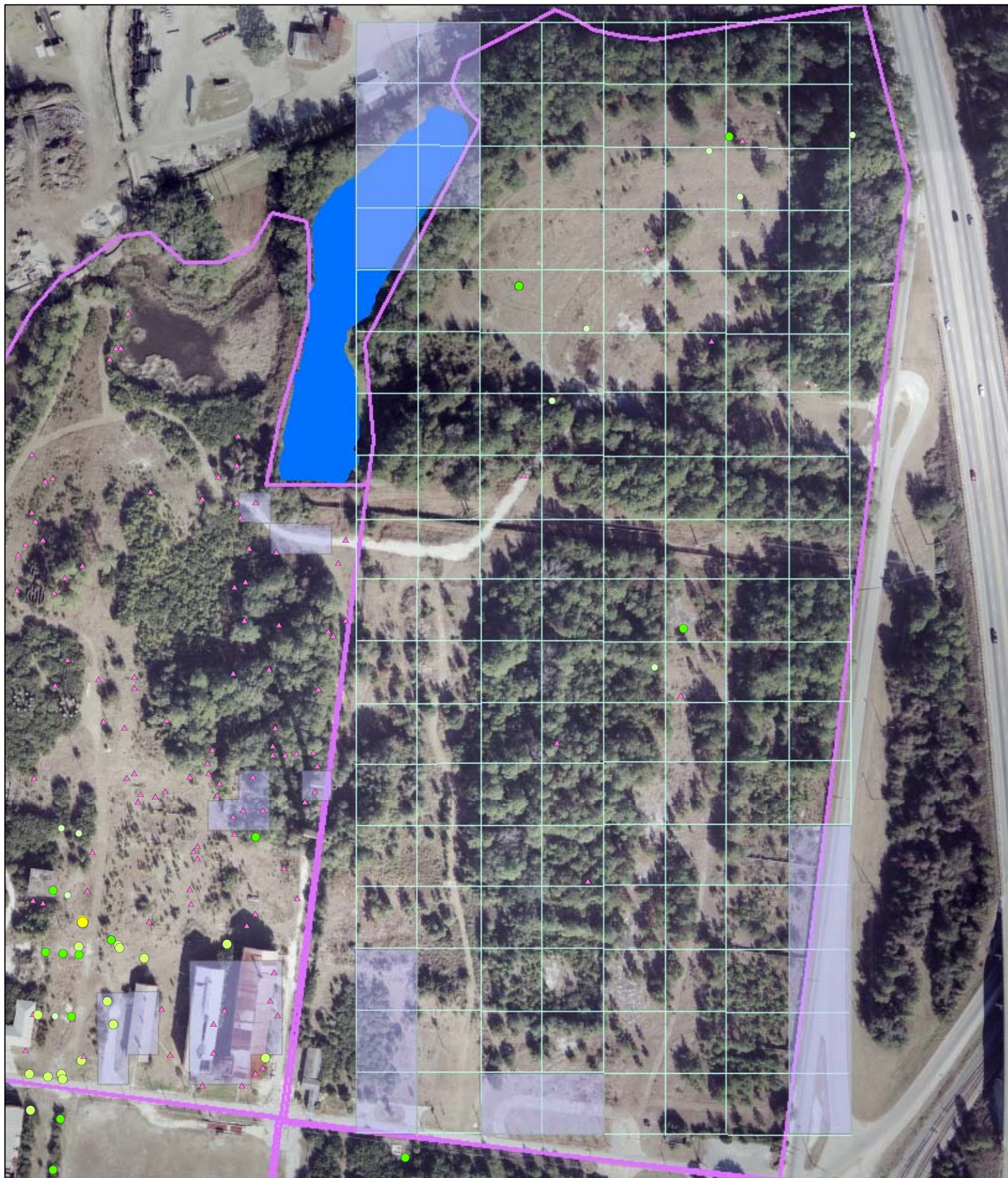
**Figure 2. Post Removal Aroclor 1268 in Surface Soil**



**Figure 3. Post Removal Aroclor 1260 in Surface Soil**



**Figure 4. Post Removal Aroclor 1254 in Surface Soil**

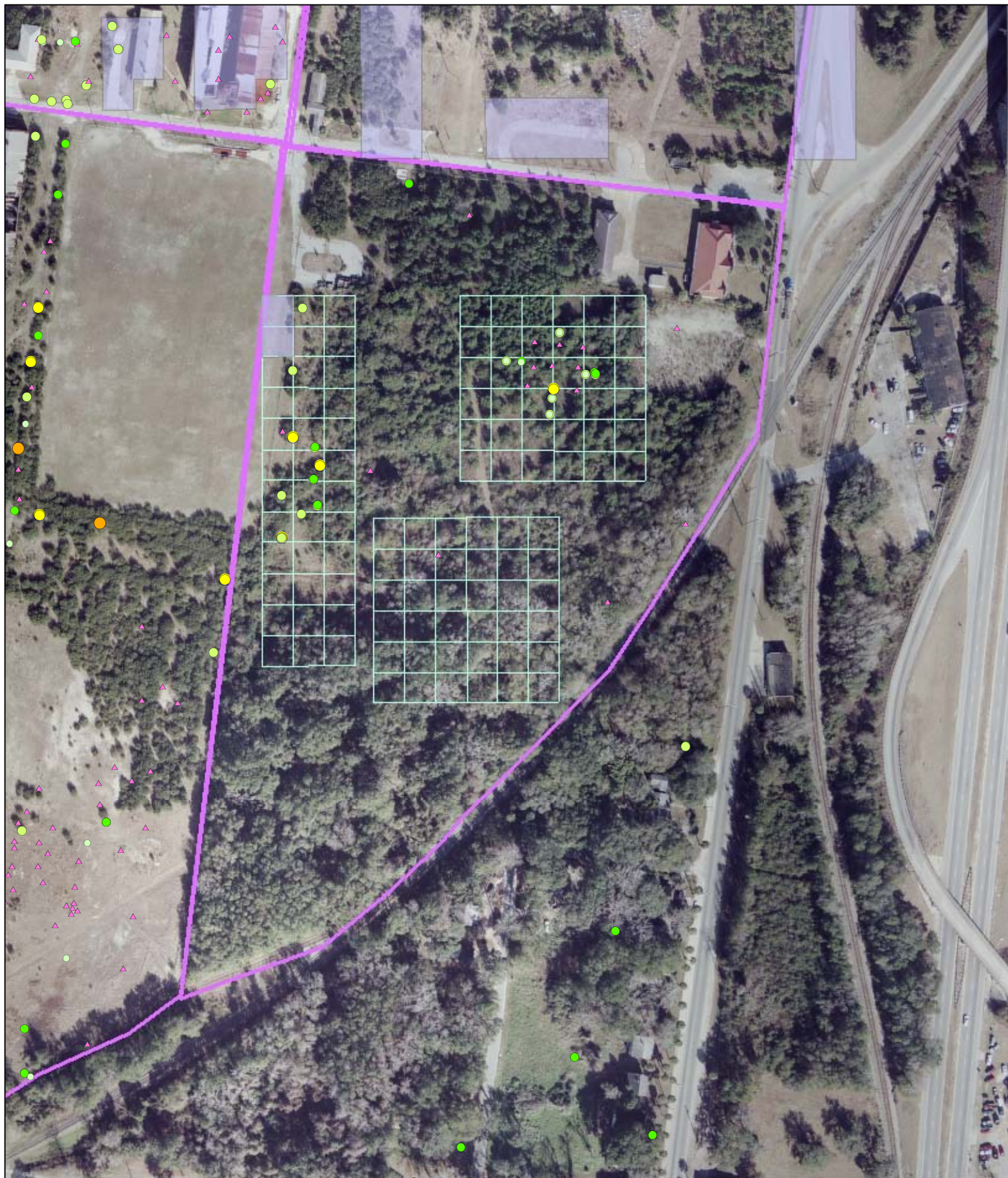


**Legend**

- |                           |              |                 |                             |
|---------------------------|--------------|-----------------|-----------------------------|
| Aroclor 1268 Surface Soil | ● 0.1 - 1    | ● 1000 - 10,000 | — Quad 1 ISM Grid           |
| RESULTPPM                 | ● 1 - 10     | ● > 10,000      | ■ Obstruction/Offsite Grids |
| ▲ ND                      | ● 10 - 100   |                 | □ OU3 HHBRA Exposure Units  |
| ● < 0.1                   | ● 100 - 1000 |                 |                             |

200 100 0 Feet

**Figure 6a. Proposed ISM Decision/Sampling Units Quadrant 1**

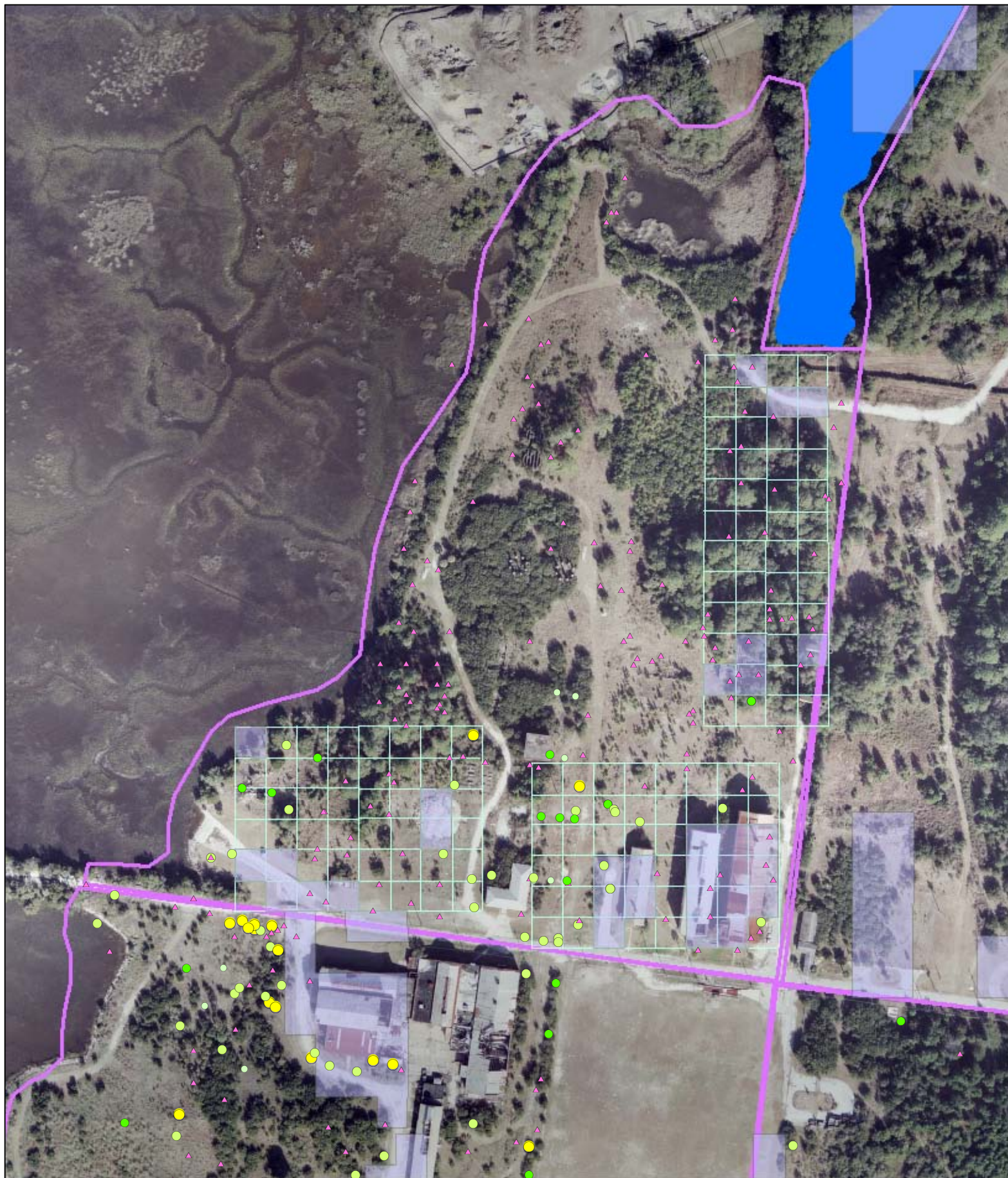


**Legend**

- |                             |              |                 |                             |
|-----------------------------|--------------|-----------------|-----------------------------|
| Arcochlor 1268 Surface Soil | ● 0.1 - 1    | ● 1000 - 10,000 | — Quad 2 ISM Grid           |
| RESULTPPM                   | ● 1 - 10     | ● > 10,000      | ■ Obstruction/Offsite Grids |
| ▲ ND                        | ● 10 - 100   |                 | ■ OU3 HHBRA Exposure Units  |
| ● < 0.1                     | ● 100 - 1000 |                 |                             |

200 100 0 Feet

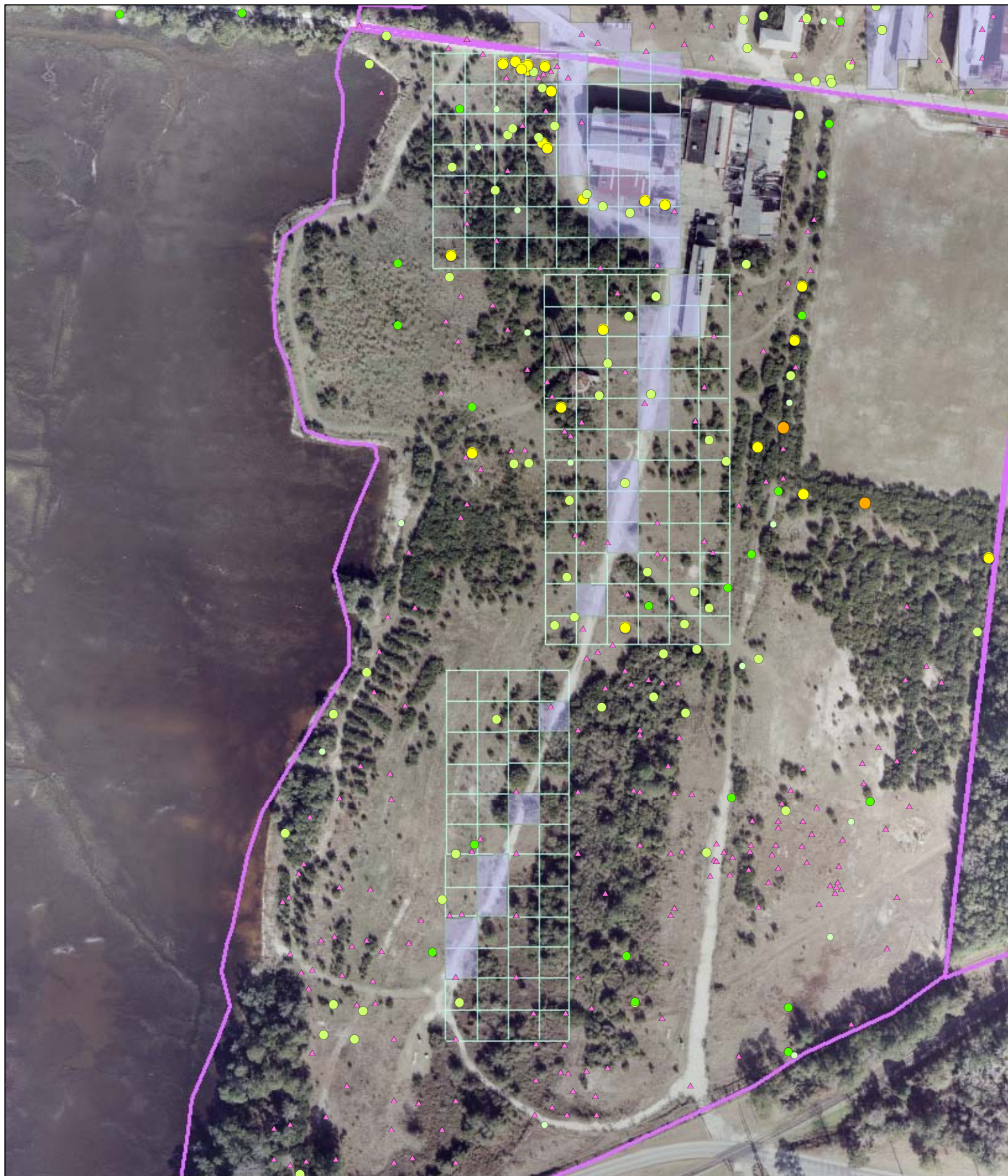
**Figure 6b. Proposed ISM Decision/Sampling Units Quadrant 2**



**Legend**

- |                           |              |                 |                             |
|---------------------------|--------------|-----------------|-----------------------------|
| Aroclor 1268 Surface Soil | ● 0.1 - 1    | ● 1000 - 10,000 | — Quad 3 ISM Grid           |
| RESULTPPM                 | ● 1 - 10     | ● > 10,000      | ■ Obstruction/Offsite Grids |
| ▲ ND                      | ● 10 - 100   |                 | ■ OU3 HHBRA Exposure Units  |
| ● < 0.1                   | ● 100 - 1000 |                 |                             |
- 200    100    0 Feet

**Figure 6c. Proposed ISM Decision/Sampling Units  
Quadrant 3**



**Legend**

- |                           |              |                 |                             |
|---------------------------|--------------|-----------------|-----------------------------|
| Aroclor 1268 Surface Soil | ● 0.1 - 1    | ● 1000 - 10,000 | — Quad 4 ISM Grid           |
| RESULTPPM                 | ● 1 - 10     | ● > 10,000      | ▭ Obstruction/Offsite Grids |
| ▲ ND                      | ● 10 - 100   |                 | ▭ OU3 HHBRA Exposure Units  |
| ● < 0.1                   | ● 100 - 1000 |                 |                             |
- 200 100 0 Feet

**Figure 6d. Proposed ISM Decision/Sampling Units Quadrant 4**